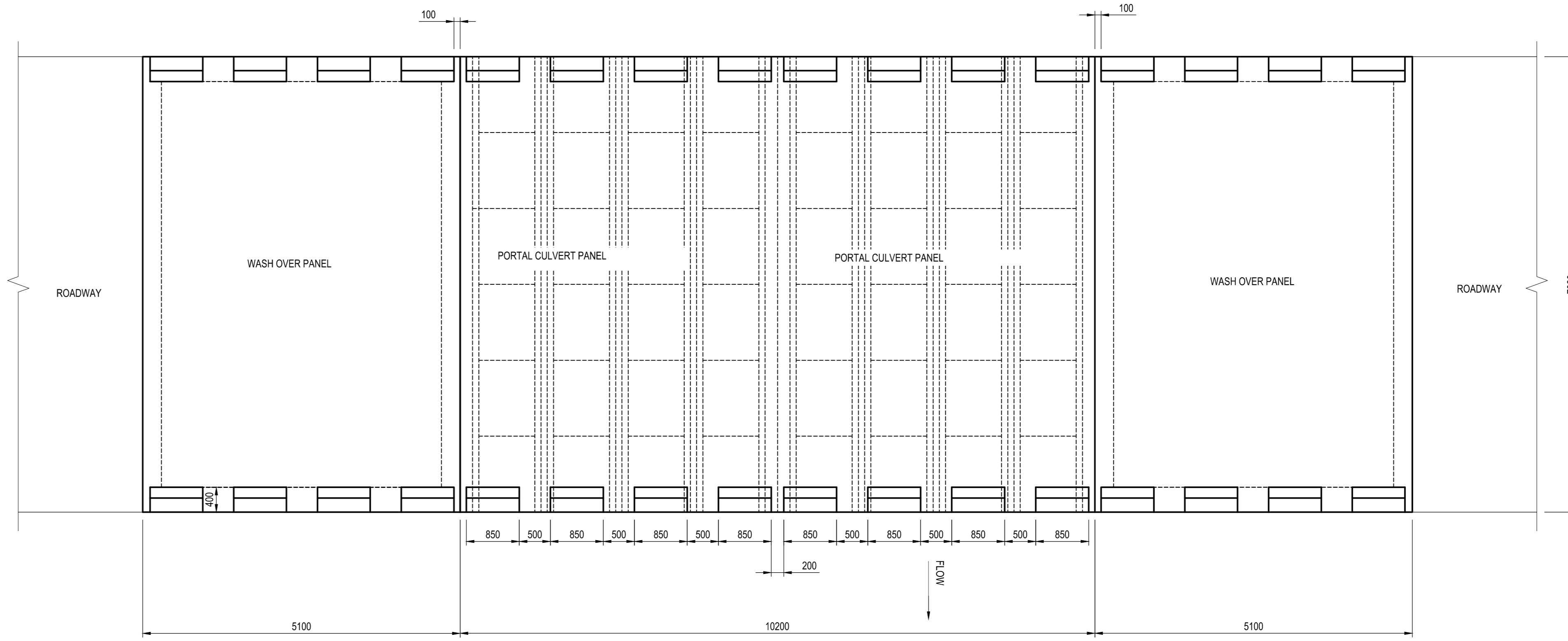




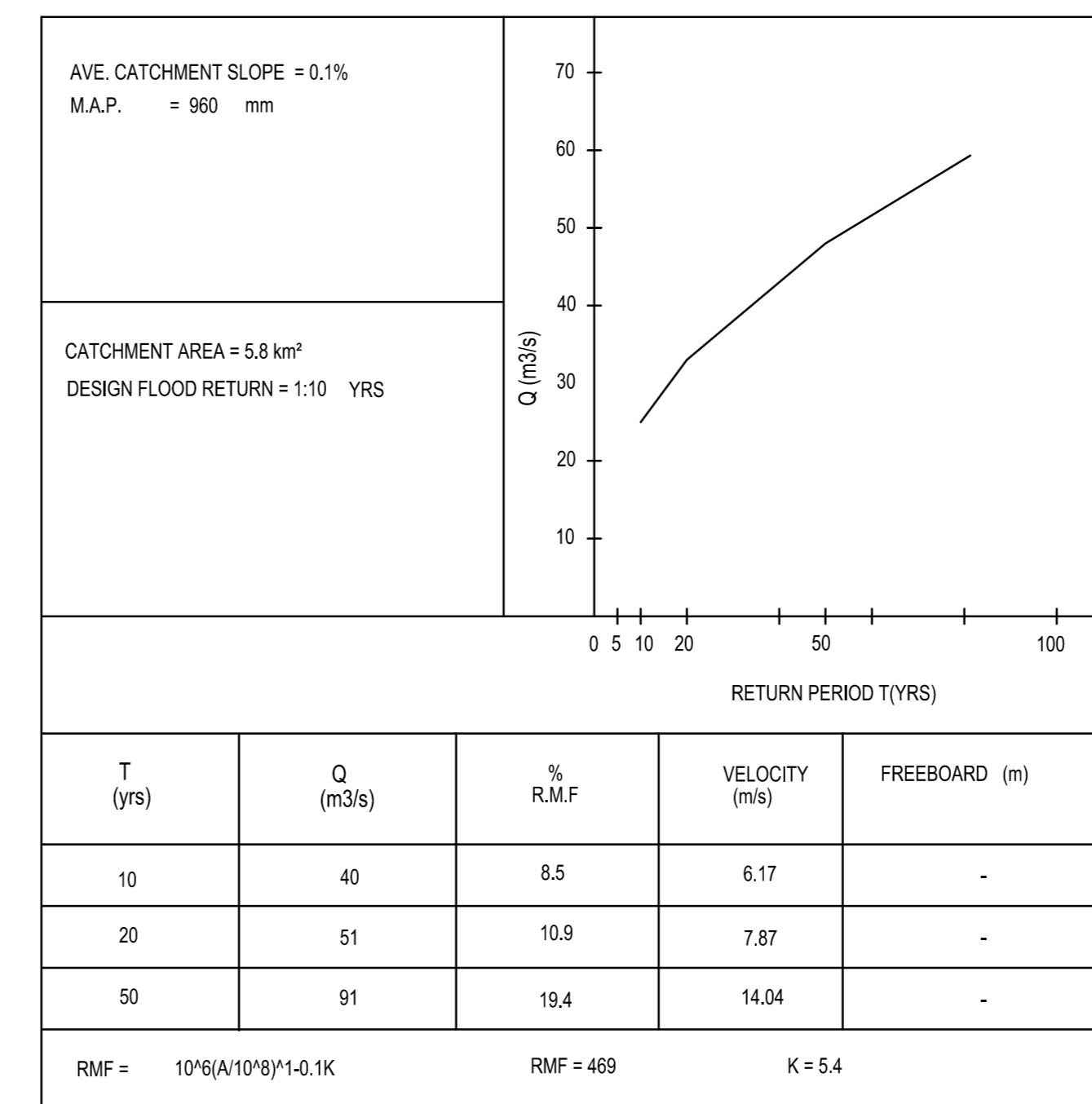
SITE PLAN
SCALE 1:200



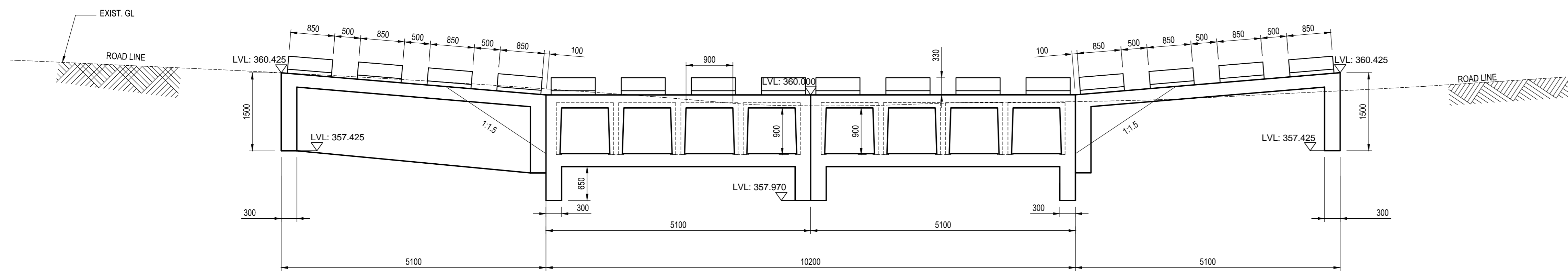
PLAN
SCALE 1:50

BENCHMARKS			
	Y	X	Z
BP01	15347.631	3269723.001	367.288
BP02	15509.021	3269647.472	373.865
BP03	15389.637	3269632.414	376.450
BP04	15342.019	3269706.663	367.373

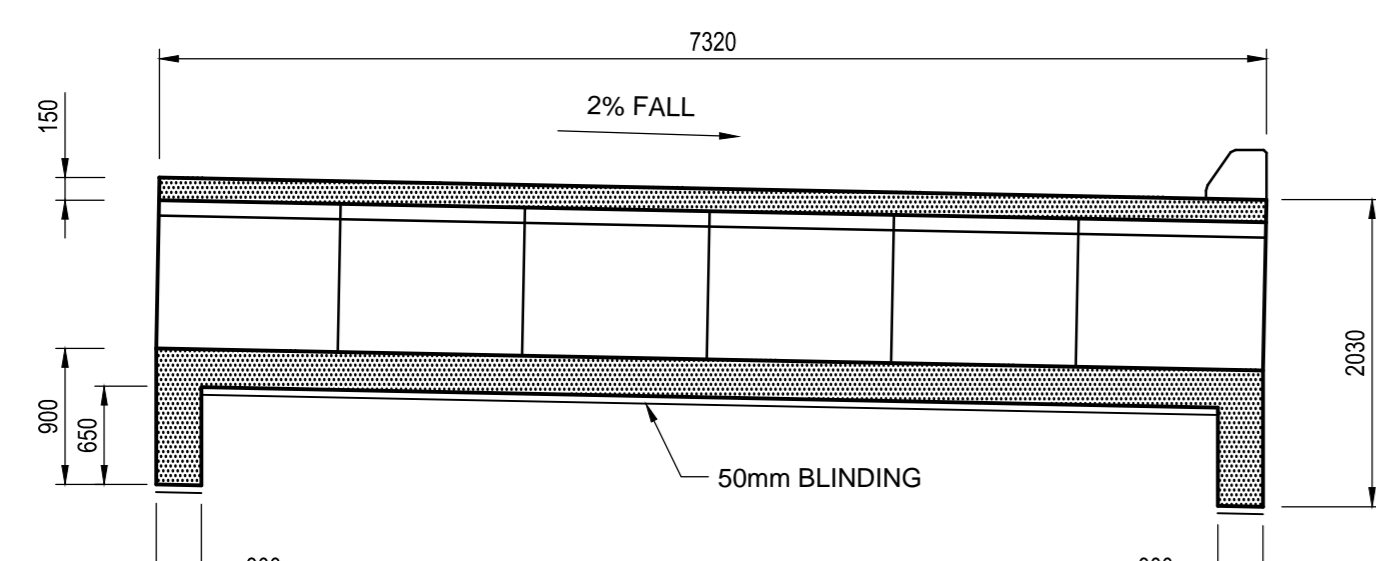
DRIFT SETTING OUT POINTS			
	Y	X	Z
A	15384.90	3269692.61	
B	15379.37	3269692.61	
C	15388.27	3269677.21	
D	15392.74	3269672.41	



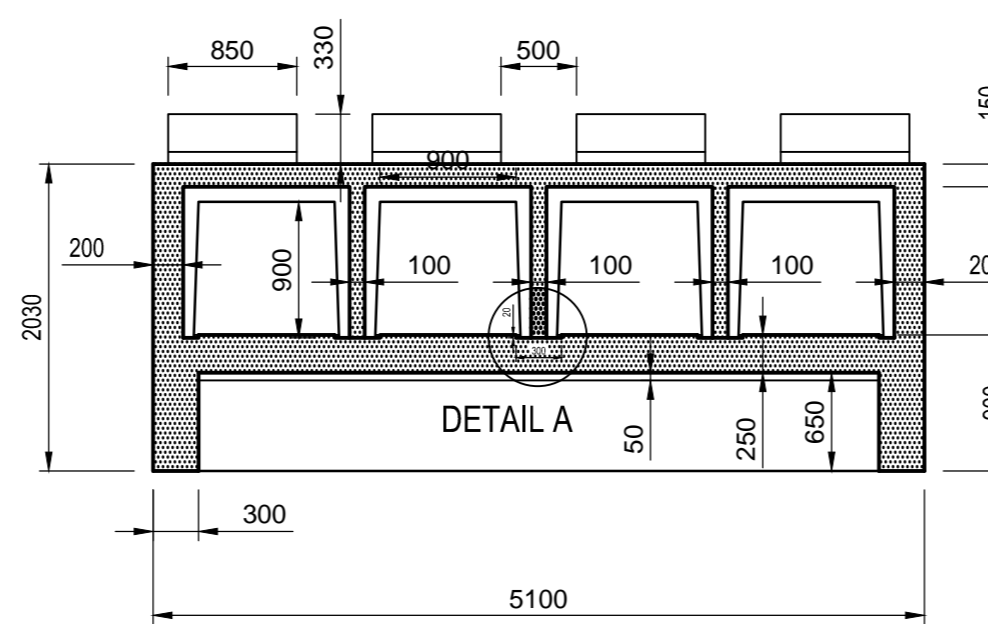
HYDROLOGICAL AND HYDRAULIC DATA



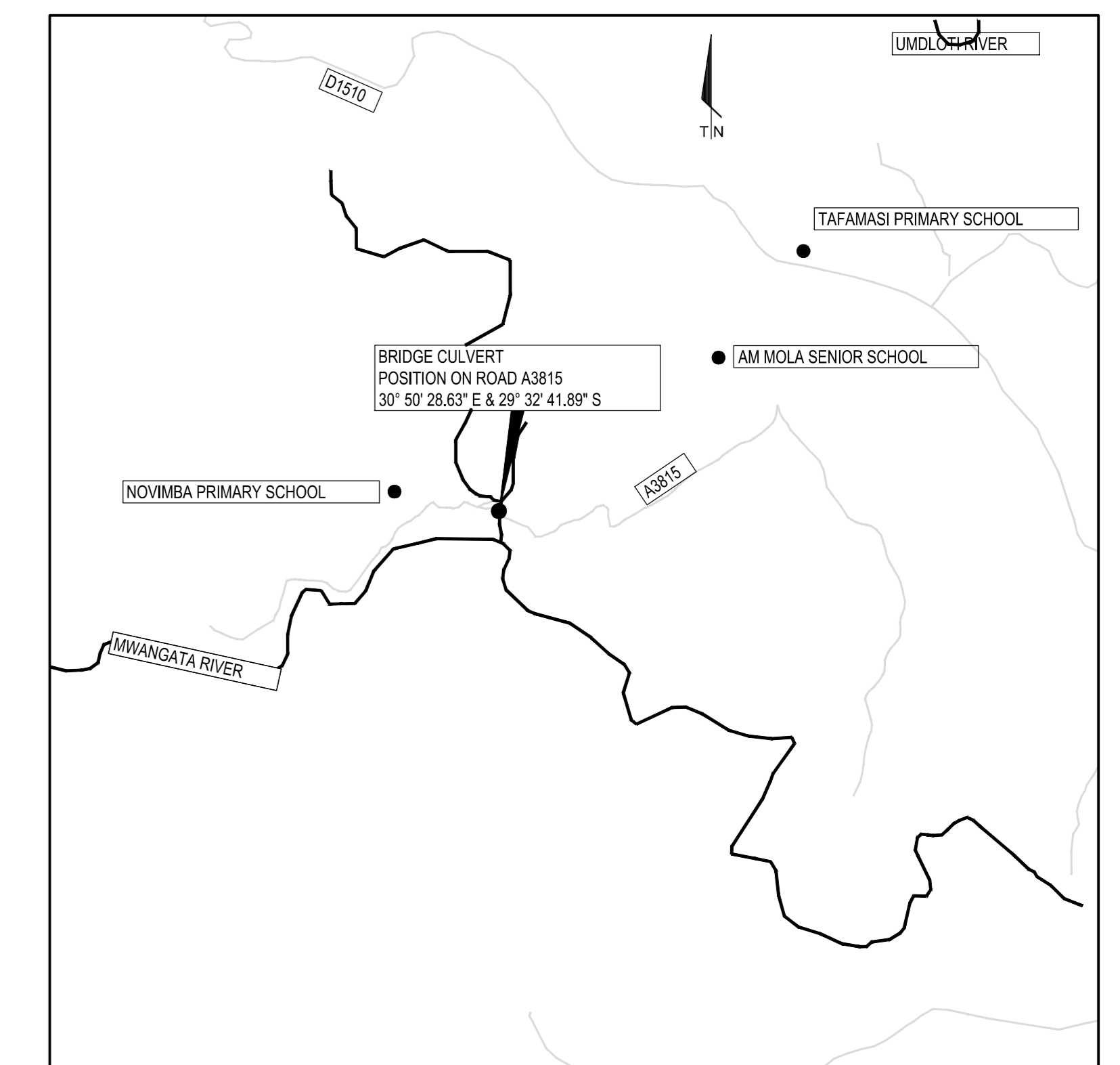
ELEVATION
SCALE 1:50



SECTION THROUGH PORTAL CULVERT
SCALE 1:50



SECTION THROUGH PORTAL CULVERT
SCALE 1:50

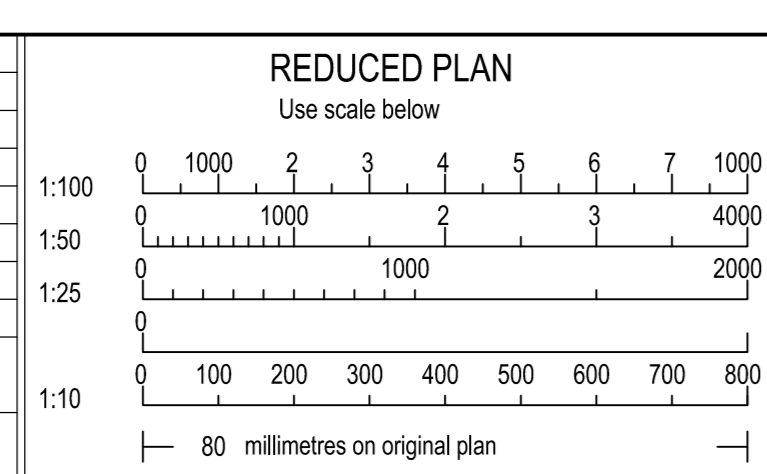


LOCALITY PLAN
SCALE 1:2000

GENERAL NOTES:

- ALL WORK TO BE CARRIED OUT IN ACCORDANCE WITH THE C.O.L.T.O SPECIFICATIONS FOR ROAD AND BRIDGE WORKS.
- DESIGN BASED ON LIMIT STATE IN ACCORDANCE WITH TMH 7: PART 3 1989.
- THE DESIGN LOADING IS IN ACCORDANCE WITH TMH 7: PART 1 & 2 1981 (REV 1988).
- ESTIMATE ALLOWABLE BEARING PRESSURE IS 200KPA.
- CONCRETE: BLINDING - 15/19 (15MPa)
WALLS - 30/19
SLABS - 30/19
- COVER TO ALL REINFORCEMENT - 50mm MIN.
- ALL FORM SURFACE FINISHES:
EXPOSED - CLASS F2 FINISH (SMOOTH)
CONCEALED - CLASS F1 FINISH (ROUGH)
- REINFORCEMENT TO BE BENT IN ACCORDANCE WITH S.A.B.S. 82-1997.
- REINFORCEMENT TO CONFORM TO S.A.B.S. 82-1997.
- ALL SHARP CONCRETE EDGES TO BE CHAMFERED 25mm x 25mm.
- BRIDGE NUMBER FORMED IN CONCRETE DURING CONSTRUCTION. A NEGATIVE PLATE WITH NUMERALS 75mm HIGH AND 10mm DEEP IS TO BE PLACED FLUSH AGAINST SHUTTER.
THE NUMBER INVERTS ARE TO BE PAINTED CAREFULLY WITH TWO COATS OF BLACK ALKALI RESISTANT PAINT.

Symbol	Date	Description	Checked	Signed
A	08.04.2013	ISSUED FOR INFORMATION	GH	
AMENDMENTS				



Continued from:-	Designed by:-	G. HOOPER
Continued on:-	Checked by:-	P. BOORSMA
Cross Section No:-	Drawn by:-	C.KIN
Design Plan No:-	Checked by:-	G. HOOPER
Survey Plan No:-	Date of approval:-	

PROVINCE OF KWAZULU-NATAL
DEPARTMENT OF TRANSPORT

consulting engineers & project managers
Goba KwaZulu-Natal
25 Richeford Circle
Ridgeside Office Park
Umhlanga
4319
+27 31 536 8400 Tel
+27 31 536 9500 Fax

Bridge Engineer
Head : Transport

S 29:02:14.75
E 31:25:22.20
**REINFORCED CONCRETE DRIFT ON A3815
NOVIMBA ROAD
GENERAL ARRANGEMENT**

Staked km distance	Sheet: 1	Rev: A
km	of: 3	
Scale	Plan No.:	
AS SHOWN	20737/301/01	