

Curriculum Vitae: Ms M Niehof

Name : **NIEHOF MONICA CORNELIA**
 Date of Birth : 13 February 1979
 Profession/Specialisation : Senior Environmental Assessment Practitioner
 Nationality : South African
 Years' experience : 11

Key Experience

Monica Niehof has 11 years' working experience in the environmental field and 17 years' work experience overall in a variety of fields including the tourism industry. Key experience in the environmental field include Environmental Impact Assessments, Water Use License (WUL) Applications, Waste Management License (WML) Applications, Air Emissions License (AEL) Applications, Environmental Management Programmes, Public Participation Processes, Environmental Authorisation, AEL and WML Auditing, Environmental Control and Monitoring for a variety of development projects including, residential, retail, mixed-use, commercial, infrastructure and mining projects.

Key Qualifications

University of South Africa
BSc. Honours Environmental Management

Tshwane University of Technology
National Diploma Tourism Management

Supplementary Training

- **Environmental Legal Training (2017)**
MacRobert Attorneys, Pretoria
- **Environmental Legal Training (2016)**
Imbewu Sustainability Legal Specialists, Pretoria
- **Innovative design and management of Tailings and Heap Leach Pads (2015)**
Ian Hammond, Johannesburg
- **Mining and resources legislation (2013)**
Imbewu Sustainability Legal Specialists, Johannesburg

Employment Record

January 2018 – To date	PRISM EMS Senior Environmental Assessment Practitioner
February 2014 – January 2018	Environmental Assurance (Pty) Ltd Environmental Consultant and Auditor
November 2009 – January 2014	Torbiose Solutions cc Environmental Assessment Practitioner
March 2007 – October 2009	Bokamoso Environmental Consultants Environmental Consultant

Project Experience

Environmental Authorisation Process (BA, EIA, WL, WULA):

- Coega Tank Farm – EIA and AEL for proposed tank farm in Coega IDZ – 2018 – current;
- Wilfordon X8-11 WULA for mixed-use township – 2018 – current;
- Greengate X 69 and Greengate X 70 BAs for residential townships – 2018;
- Luipaartsvlei X9 – EIA for mixed-use development – 2018 – current;
- Bultfontein – BA for car and truck dealership – 2018 – current;
- Kusile – BA for filling station and truck stop – 2018 – current;
- Peach Tree X 26 – BA for residential township – 2018 – current;
- Eastern Platinum Limited: WULAs and WML for Crocodile River Platinum Mine: 2016-2017.
- Eurasion Resources Group: EIA / EMPR and WULA for Mamatwan Proposed Manganese Mine: 2014-2015
- Yoctolux Investments (Pty) Ltd: EIA for Yoctolux Proposed Opencast Coal Mine: 2014
- Makoya Supply Chain Holdings (Pty) Ltd: EIA, AEL and WULA for Blinkpan Coal Siding: 2014-2015
- South African Coal Mine Holdings Ltd: EIA for treatment plant at Umlabu Coal Mine: 2014
- Infrasons Holdings Ltd EIA and WULA for Meepo Clay and Sand Mine: 2014
- Samancor Chrome Limited: Western Chrome Mines: EIA, EA amendment and WULA for Elandsdrift Proposed Opencast Chrome Mine: 2014-2016
- Samancor Chrome Limited: Western Chrome Mines: WML and WULA for Millsell/Waterkloof Mine Tailings Storage Facility and Waste Rock Dump Expansion: 2016-2017
- Samancor Chrome Limited: Western Chrome Mines: EA amendment for Millsell/Waterkloof Mine Expansion of Underground Mining: 2016-2017
- Samancor Chrome Limited: Eastern Chrome Mines: EIA, EA amendment and WULA for Elandsdrift Proposed Opencast Chrome Mine: WULAs for Doornbosch, Lannex and Steelpoort Mines: 2017
- Coal of Africa Limited: IWWMP and RSIP updates for Mooiplaats Colliery: 2016 and 2017
- Geosciences (Pty) Ltd: Desktop Environmental Feasibility Study for Vygenhoek Proposed Water Bottling Plant: 2016
- Sabrix: AEL Audits for Boekenhoutkloof and Zandfontein plants: 2017
- Klei Minerale (Pty) Ltd (Sabrix): BA for Boekenhoutkloof Prospecting: 2017-2018
- Brikor: WML, EIA and WULA for the proposed Grootfontein Coal and Clay Mine: 2017-2018
- Aurecon: BA and WULA for the decommissioning of the Mogalakwena Municipality Masodi and Sekgakgapeng Oxidation Ponds: 2017
- Aurecon: WULA for the Mogalakwena Waste Water Treatment Plant: 2017
- Tubatse Chrome (Pty) Ltd: BA and Amendment of the AEL for the Tubatse Chrome Pellitising and Sintering Plant: 2017-2018
- Samancor Chrome Limited: EIA, WULA and WML for Mareesburg Chrome Mine: 2017-2018
- Kemin Industries South Africa (Pty) Ltd: AEL Amendment for Chemical Plant: 2017-2018
- Cell C (Pty) Ltd: Several Bas and Listing Enquiries for telecommunication masts: 2009-2014
- MTN (Pty) Ltd: Several Bas and Listing Enquiries for telecommunication masts: 2009-2014
- Vodacom (Pty) Ltd: Several Bas and Listing Enquiries for telecommunication masts: 2009-2014
- Eaton Towers (Pty) Ltd: Several Bas and Listing Enquiries for telecommunication masts: 2010-2014
- American Tower Corporation South Africa: Several Listing Enquiries for telecommunication masts: 2010-2014
- Hennie Burger: Scoping and EMP for Cashan X12 residential development: 2007
- Chieftain Group Ltd: EIA and EMP for Celtic Farm Estate (Rietvlei Farm Estate): 2007
- Kwezi V3 Engineers: WULA for the upgrading of the Colesberg WWTW: 2008
- Billion Group (Pty) Ltd: DFA scoping and BNEMA EIA for Forest Hill City retail development: 2009
- Noordvaal Developments: BA for the Hartebeesthoek 251 residential development: 2008
- Heartland Properties: EIA for the K113 route determination and construction of the K113 provincial road: 2009
- Cradle Gate: DFA Scoping and EIA for the Mogale X5 Mixed used development: 2008
- Cradle Gate: EIA for Nooitgedacht X9 residential township: 2009
- M&T Developments: EIA for Monavoni X31 residential township: 2008-2009
- M&T Developments: BA for Olympus AH 84 residential development: 2008
- M&T Developments: BA for the Pierre van Ryneveld reservoir: 2008
- Brodsky Investments: EIA for the R81 Provincial road upgrade, Polokwane: 2009

- Local Municipality: BA for the Siyabuswa water augmentation scheme – water supply pipeline in Siyabuswa, Moutse District: 2007-2008
- Dolphin Whisperer 10: BA and EIA for Valley View Phase 1 and Phase 2 residential townships in Emalaheni: 2008-2009
- Century Property Developments: EIA for Waterfall Valley residential township in Midrand: 2009

Section 24G Applications:

- USN, Vaal de Soleh: Benjoh Fishing Resort: 2008
- Cell C (Pty) Ltd: Telecommunication Mast: 2013

Mining/Prospecting Applications, EMPLans and Amendments:

- Eastern Platinum Limited: Environmental Report for Mining Right Renewal for Crocodile River Platinum Mine: 2017
- Eurasion Resources Group: EIA / EMPR for Mamatwan Proposed Manganese Mine: 2014-2015
- Pewstar Investments (Pty) Ltd: EMP for proposed expansion of Vygenhoek sand mine: 2016

EIA/EMP Amendments (Section 102 MPRDA):

- Sky Sands Limited (Group Five): EIA/EMPR Amendment for Proposed expansion of Sky Sands sand mine: 2016

Audits (Legal, RoD Compliance / Internal):

- Makoya Supply Chain Holdings (Pty) Ltd: Environmental Compliance Audits for Blinkpan, Camden and Highveld Coal Sidings and Makoya Head Office
- Infrabuild Cement (Pty) Ltd: AEL renewal and EMPR external audit for Infrabuild Cement Manufacturing Plant in Middelburg: 2017
- Gautrain Management Agency: Annual and follow up Environmental Management Programme and Environmental and WUL audits: 2017
- MTN (Pty) Ltd: Various compliance audits for telecommunication masts: 2009-2014
- Mall of the North JV: ROD Compliance reports for construction phase of the Mall of the North: 2009

Professional Affiliations

- International Association Impact Assessment (IAIA): 2016-2017.

Curriculum vitae: Mr D Botha

Name : **BOTHA, DE WET**
Date of Birth : 20 June 1977
Profession/Specialisation : Principle Environmental Scientist & Biodiversity Specialist
Nationality : South African
Years' experience : 15

Key Experience

Mr Botha has extensive experience in conducting a broad range of applications related to authorisation from the various authorities managing Environmental Legislation in South Africa. Mr Botha has completed numerous EIA's and Basic Assessment Report applications. He has conducted EIA reviews and has acted in a specialist advisory role to other consultants/applicants. Management plans compiled include Environmental Management Plans, Open Space EMPs, Wetland EMP's and Waste Management Plans.

The practitioner has extensive and specialised experience in wetland and aquatic assessment and delineation, as well as applications for Water Use Licenses.

Additional to this, Mr Botha also has experience in Visual Assessments, Specialist Faunal and Floral Surveys, Grassland Rehabilitation and Baseline Agricultural Potential Studies. Mr Botha is an experienced Environmental Control Officer and –Auditor. GIS data and spatial modelling is included in Mr Botha's range of capabilities, along with GIS sensitivity mapping and Project Management.

As a specialist interest, Mr Botha has been involved with research and studying the habitat area of the Juliana's Golden Mole, a Red List threatened species, in association with the Pretoria of University.

Education & Key qualifications

MAGISTER ARTIUM (M.A. Environmental Management)

University of Johannesburg (2005-2006)

- Thesis: *Establishing Guidelines for Environmental Management Plans for Golf Course Developments in Gauteng Province.*
- Syndicate research: *Baseline Environmental Assessment investigating the flow of Mercury through the system at the University of Johannesburg in Mercury containing Lighting as a by-product.*
- The biosphere & environmental studies.
- Environmental analysis, management skills & perspectives.

DIPLOMA: REMOTE SENSING AND IMAGE PROCESSING

Rand Afrikaans University (2001)

DIPLOMA: GEOGRAPHIC INFORMATION SYSTEMS (GIS)

Rand Afrikaans University (2001)

BACHELOR OF ARTS (HONOURS) (BA. (Hons) Geography and Environmental Management)

Rand Afrikaans University (2001)

Modules completed:

- Geomorphology
- Energy Technology
- Remote Sensing and Satellite Imagery
- Geographic Information Systems
- Philosophy and Methodology of Geography

POST GRADUATE HIGHER EDUCATIONAL DIPLOMA (PHED).

Rand Afrikaans University (1999-2000)

BACHELOR OF ARTS (BA. Geography and Environmental Management)

Rand Afrikaans University (1996-2000)

Supplementary Qualifications

- Understanding the Basics of Wetland Ecosystems (2017) Gauteng Wetland Forum
- Wetland Plant Taxonomy (2017) Water Research Commission
- Financial Provision Regulations and Mine Closure Requirements (2016) IMBEWU Sustainability Legal Specialists.
- SASS5 Aquatic Biomonitoring Training Course (DWA, Ground Truth) (2014)
- Tools for Wetland Assessments (Rhodes University) (2011) (Cum Laude) - Certified
- Short Course in Soil Classification and Wetland Delineation (Terra Soil Science) (2008)
- Wetland and Riparian Delineation Course (DWA Accredited) (2008)
- Practical Field Training – Golden Mole Field Surveys (Pretoria of University; Dr. S. Maree) (2007)
- Lead auditors course (Environmental) ISO 14000 (University of Johannesburg) (2006)
- Geographical Information Systems (GIS) (Run by Geographical Information Management Systems (GIMS) - Introduction to Arcview GIS (2000)
- Geographical Information Systems (GIS) (Run by Geographical Information Management Systems (GIMS) – Introduction and Advance ArcInfo (2000)
- Geographical Information Systems (GIS) Introduction to MapInfo (2000)
- Geographical Information Systems (GIS) Advance and Specialist Map-Info (2000)

Employment record

August 2005 – Present	Prism EMS, Managing Director, Principle EAP, Wetland Specialist
August 2007 – Present	Greenline Environmental, Director, Principle EAP & Wetland Specialist
April 2004 – July 2005	Holgate and Associates, Environmental Scientist
January 2003 – February 2004	North Westminster Community College (UK), HOD Humanities Dept.
January 2002 – December 2002	Kelmscott Secondary School, (UK), HOD Geography
January 2001 – December 2001	Hoërskool Vryburger, Germiston, Teacher (Geography)
August 1999 – December 2000	The Knowledge Factory (Primedia), GIS Specialist/Product Owner

Experience record (Key Projects)

Relevant Project Experience (more detail available on request)

Golden Mole Surveys/Assessments:

- Rand Water Pipeline in the Bronberg Conservancy;
- Willows Quarry
- Shere Development
- Farm Hermansburg 495 KT – Transvaal Group Mines
- Die Wilgers Ext 79
- Bronberg Biodiversity Management Plan (Juliana’s Golden Mole)

Air Quality Projects:

- BP Wiggill – Smelter, 2016;
- Northam Platinum, North West, 2015;
- Maroeloefontein Andalusite Mine, North West, 2015;
- Eco-Planet Bamboo Core Carbon, Grahamstown, Eastern Cape, 2014;

Aquatic Assessments:

- Sunninghill Ext 168, 2016;
- Happy Island Water Park, 2016;
- Eskom, Rustenburg, North West Province, 2015;
- Steyn City, Johannesburg, Gauteng, 2015;
- Nederburg, Paarl, Western Cape, 2014;
- The Reeds, Johannesburg, Gauteng, 2014;
- Elias Motsoaledi, Soweto, Gauteng, 2014;
- K6 – Provincial Road, Pretoria, Gauteng, 2013;

Wetland Assessments:

- Greengate Ext 68, 2016;
- Happy Island Water Park, 2016;
- Wilgeheuwel Ext 60, 2016;
- Rose interchange, Gautrans, 2015;
- Eskom, Rustenburg, North West Province, 2015;
- Mogalakwena Platinum Mine, Limpopo Province, 2015;
- Steyn City, Johannesburg, Gauteng, 2014;
- Nederburg, Paarl, Western Cape, 2014;
- Elias Motsoaledi, Soweto, Gauteng, 2014;

Recent Water Use License Applications completed, include:

- Witpoortjie Ext. 52 & 57 Township Development – to facilitate the installation of essential services to the township.
- Winterveld – Installation of bulk sewer lines
- Vista Park Ext.3 - mixed-use township development and related bulk services
- Steyn City - mixed-use township development and related bulk services
- Joburg Water - Installation of bulk sewer lines
- Rooiwaal – Tswane - Installation of bulk sewer lines
- Soshanguve South Ext. 6 – Bridge crossing
- Elias Motsoaledi – Bridge crossing

[Professional affiliations](#)

- Founder Member of Environmental Assessment Practitioners Association of South Africa (EAPASA)
- Member of the International Association for Impact Assessors (IAIAsa) (1653)
- Member of the Gauteng Wetland Forum
- Member of South African Wetland Society

Curriculum Vitae: Mrs V Stippel

Name : **STIPPEL, VANESSA JEAN**
Date of Birth : 30 August 1984
Profession/Specialisation : Senior Environmental Consultant
Nationality : South African
Years' experience : 7

Key Experience

Vanessa Stippel has seven (7) years' working experience as a senior environmental consultant and is registered with the South African Council for Natural Scientific Professions as a Professional Natural Scientist (Pr.Sci.Nat. Reg No. 116221) in the field of Environmental Science. Key experience includes managing large Environmental Impact Assessments (EIAs) for Strategic Infrastructure Projects including the Berth 203 to 205 Expansion EIA and the NATREF Clean Fuels II EIA as well as Resource Management Plans (RMPs) for prioritised State Dams. She is well versed in environmental legislation and has been involved in the compilation of legal registers for organisations such as the Johannesburg City Parks and Zoo. Additional experience comprises of environmental auditing for projects such as Mooi Mgeni Transfer Scheme Phase 2 and the Orange River Water Resource Development Project –Phase 2c as well as the Technical Audit of the Sasol Chemical Industries and Sasol Mining Waste Storage Facilities in Sasolburg.

Key Qualifications

MASTER OF SCIENCE IN ANIMAL, PLANT AND ENVIRONMENTAL SCIENCE (2013)

University of the Witwatersrand

BACHELOR OF SCIENCE (HONOURS) IN ECOLOGY, ENVIRONMENT AND CONSERVATION (2006)

University of the Witwatersrand

BACHELOR OF SCIENCE (2005)

University of the Witwatersrand

Employment Record

September 2016 – Current	Prism Environmental Senior Environmental Consultant
August 2011 – August 2016	Nemai Consulting Senior Environmental Consultant

Project Experience

Environmental Authorisation Process (BA, EIA, WL, WULA):

- Steyn City Properties: EIA and WULA for Riverside View Extension 72 to 75: 2017
- Steyn City Properties: Amendment of Steyn City WULA: 2017
- South Africa Happy Island Water World (Pty) Ltd: EIA and WULA for the Proposed Development of a Water Park in Rietfontein, Mogale City. 2016 – 2017.
- Gauteng Department of Human Settlements: Scoping and EIA and WULA for the proposed Syferfontein Mixed Use Housing Development, 2014 – 2016.
- Proplan: Scoping and EIA for the proposed Rustenburg Waste Treatment Facility, 2013 – 2016.
- Ekurhuleni Metropolitan Municipality: Scoping and EIA for the proposed Esselen Park Housing Development, 2015- 2016.

- Ekurhuleni Metropolitan Municipality: Basic Assessment for the proposed Esther Park Housing Development, 2015 – 2016.
- Ekurhuleni Metropolitan Municipality: Basic Assessment for the proposed Pomona Estates Housing Development, 2015 – 2016.
- RBIDZ SOC: Scoping and EIA an WULA for the proposed Richards Bay Industrial Development Zone Phase 1F. 2014- 2016.
- Mangaung Metropolitan Municipality: Scoping and EIA for the proposed Relocation of Bloemfontein Zoo, 2015 – 2016.
- Transnet Capital Projects: Scoping and EIA for Deepening, Lengthening and Widening of Berth 203 to 205, Pier 2, Container Terminal, Port of Durban, 2012 – 2015.
- Wesizwe Platinum Resources: Basic Assessment and WULA for the proposed Ledig Water Supply Pipeline, 2014 – 2015.
- City of Tshwane Metropolitan Municipality: Scoping and EIA for the proposed new Hennops Wastewater Treatment Works (WWTWs), 2012.
- City of Tshwane Metropolitan Municipality: Scoping and EIA for the Upgrade of the Sunderland Wastewater Treatment Works, 2012.
- Transnet Freight Rail: Basic Assessment and Waste License Application for the proposed remediation of 600km of asbestos contaminated land on Transnet Properties – Group A (Port Elizabeth to De Aar), 2011 - 2012.
- Mpumalanga Department of Sports and Recreation: Scoping and EIA for the proposed High Altitude Training Facility in Mpumalanga, 2011 - 2012.
- Sasol Chemical Industry: Waste License Applications for Sasol Chemical Industries sites in Sasolburg, 2012 - 2013.
- Sasol Chemical Industry: Scoping and EIA for the Proposed NATREF Clean Fuels II, 2012 – 2013.

Section 24G Applications:

- Ekurhuleni Metropolitan Municipality: Weltevreden Material Recycling Facility, 2013.

Mining/Prospecting Applications, EMPLans and Amendments:

- Transnet National Port Authority: Mining Right and EIA for Offshore Sandwinning for developments within the Port of Durban, 2016.

Audits (Legal, RoD Compliance / Internal):

- Letamo Game Farm: Environmental Compliance Audit for Letamo Game Farm. 2016.
- TCTA: Environmental Audit of the Orange River Water Resource Development Project –Phase 2c, 2013 – 2016.
- Johannesburg City Parks and Zoo: Compilation of the Legal Register and Legal Compliance Audit for Johannesburg City Parks and Zoo, 2015.
- University of Mpumalanga: Environmental Legal Compliance Audit for the University of Mpumalanga. 2015.
- Sasol: Technical Audit of the Sasol Chemical Industries and Sasol Mining Waste Storage Facilities; Sasolburg, 2014.
- TCTA: Environmental Audit of the Mooi Mgeni Transfer Scheme – Phase 2, 2012.
- MSW: Environmental Control Officer – Joe Slovo Low Level Bridge, Modimolle, 2012.

Other:

- Dr Kenneth Kaunda District: Dr Kenneth Kaunda District Environmental Management Framework, 2014 – 2015.
- uMzinyathi District: uMzinyathi District Environmental Management Framework, 2015.
- Transnet Capital Projects: Berth 203 to 205 Expansion Integrated Waste Management Approach, 2015.
- Department of Water and Sanitation: Climate Change Specialist Study for Foxwood Dam EIA, 2015.

- Transnet Capital Projects: Climate Change Adaptation Monitoring and Evaluation Plan for Berth 203 to 205 Expansion, 2015.
- Department of Water and Sanitation: Boskop Dam Resource Management Plan and Business Plan, 2013.
- Department of Water and Sanitation: Midmar Dam Resource Management Plan and Business Plan, 2013.
- Department of Water and Sanitation: Craigieburn Dam Resource Management Plan and Business Plan, 2013.
- Department of Water and Sanitation: Theewaterskloof Dam Resource Management Plan and Business Plan, 2013.
- Department of Water and Sanitation: Vanderkloof Dam Resource Management Plan and Business Plan, 2013.
- Department of Water and Sanitation: Vygeboom Dam Resource Management Plan and Business Plan, 2014.
- Department of Water and Sanitation: Pongolapoort Dam Resource Management Plan and Business Plan, 2014.
- Department of Water and Sanitation: Inanda Dam Resource Management Plan and Business Plan, 2015.
- Department of Water and Sanitation: Hazelmere Dam Resource Management Plan and Business Plan, 2015.
- Department of Water and Sanitation: Grootdraai Dam Resource Management Plan and Business Plan, 2014.
- Department of Water and Sanitation: Gariep Dam Resource Management Plan and Business Plan, 2014.
- Department of Water and Sanitation: Voelvlei Dam Resource Management Plan and Business Plan, 2014.
- Department of Water and Sanitation: Wriggleswade Dam Resource Management Plan and Business Plan, 2014.
- Department of Water and Sanitation: Vaal Dam Resource Management Plan and Business Plan, 2014.
- Department of Water and Sanitation: Mthatha Dam Resource Management Plan and Business Plan, 2015.
- Department of Water and Sanitation: Allemenskraal Dam Resource Management Plan and Business Plan, 2015.
- Department of Water and Sanitation: Greater Brandvlei Dam Resource Management Plan and Business Plan, 2015.
- Department of Environmental Affairs: Mapungubwe Culture Landscape Environmental Management Framework, 2014.
- Nkomati Anthracite Mine: Social Impact Assessment for the Nkomati Anthracite Mine, Mpumalanga, 2011.

Professional Affiliations

- Professional Member of Southern African Institute of Ecologists and Environmental Scientists: 2015 - 2016.
- SACNASP– Pr. Sci. Nat.(116221): 2016



COMPANY PROFILE



**10 YEARS OF
SUSTAINABLE
GROWTH
2015**

Environmental Consultants
Environmental Auditors
Aquatic & Wetland Specialists
Ecological Specialists
Air Quality Specialists
License Application Facilitators
Mining Consultants
Environmental Legislation Consultants

Company Overview

Prism Environmental Management Services (Pty) Ltd is a multi-disciplinary Environmental Management consulting firm. With a vision encompassing a holistic understanding of integrated environmental management in partnership with sustainability, the company prides itself on excellent service and value-added solutions to a range of clients. Established in 2005, the company has grown from strength to strength, expanding to two offices with a team of professionals with a diverse range of specialities.

With exceptional field-expertise, command and execution of the relevant legislative requirements and report quality, the company is recognised by clients, fellow consultants, and various Local and Provincial Authorities as a prominent service provider in our field of consulting.

Our Vision, Mission and Commitment

OUR VISION

Sustainability through Environmental Management Excellence.

OUR MISSION

Prism Environmental Management Services is a specialist environmental services provider, assuring excellence in environmental resource assessment and management. We stand in partnership with our clients, our employees, the community and the environment. Our ambition is to conserve resources, preserve natural habitats and prevent significant environmental impacts, by means of sustainable utilisation of our precious natural resources.

OUR COMMITMENT

The management and staff of Prism Environmental Management Services are committed to:

- Continued improvement of our customer relationships, ensuring customer satisfaction and superior service levels
- Providing professional and purposeful services at all times
- Following appropriate procedures to ensure the correct management and ongoing building of a sustainable environment
- Ongoing development of our staff to meet the challenges of our market
- Utilising experienced, well trained and technically competent staff
- To be dynamic in all dealings with our customers, colleagues and the environment
- Providing multi-faceted services to our clients through our variety of specialist disciplines; and
 - Embracing honesty, trust, teamwork, diversity and relationships that are beneficial to all involved.

Experience

The team at Prism EMS has extensive experience in Integrated Environmental Management (IEM) having completed numerous Basic Assessment Reports, Environmental Scoping Reports, Environmental Impact Assessments (EIA's) and Environmental Management Plans (EMP's) in terms of the National Environmental Management Act, 1998 and the National Environmental Management: Waste Act, 2008 as well as a wide range of specialist studies for a range of authorisation applications. Prism EMS is also involved in assisting various town planners and prominent developers with EIA applications, EMP's, Open Space Management Plans, Riverine- and Wetland Assessments and Delineations, Riverine and Wetland Management Plans, Ecological Studies, Air Quality Impact Assessments and other specialist studies. The consultancy also facilitates Water Use License Applications (WULAs).



With global emphasis placed on aquatic resources and the conservation thereof, it is important to know that Prism EMS are specialists in the field of assessment, delineation, management and conservation of aquatic resources. Our highly qualified team has extensive knowledge of aquatic fauna and flora and have completed numerous wetland- and riverine assessments and delineations. Members of our team are acknowledged as leaders in the field of wetland assessment and delineation by peers and authorities alike. Both Prism EMS as a company, and De Wet Botha personally, are registered members of the SA Wetland Society.

Auditing and on-site monitoring also form part of the range of services the consultancy offers – be it environmental control officers (ECOs) during the construction phase of developments, environmental monitors (EMs) for the project engineering team on sites, or environmental officers (EOs) for contractors. The common goal aimed at, and achieved within these roles, is the overseeing, implementation and compliance with the Environmental Authorisation (EA) and EMP.

Consultants in our team have in-depth experience in the environmental component of the mining industry, regulated by the Mineral and Petroleum Resources Development Act, 2002 and with strong emphasis on the National Water Act, 1998, and National Environmental Management Act, 1998. Services offered to the mining industry include, but are not limited to, Closure Plans, Rehabilitation Fund Calculation, Basic Assessments, Environmental Impact Assessments, Environmental Management Plans, Environmental Management Implementation, Performance Assessments, Water Use License Applications, Bio-diversity Assessments and various Specialist Assessments as part of EMP amendments and new mining activities.

Prism EMS has also expanded its services to encompass the Air Quality field. The consultancy and its associates are able to conduct Air Quality Impact Studies, Air Emissions modelling and also facilitate Air Emissions Licensing (AEL).

To summarise, Prism EMS is an accomplished consultancy, confident that we can successfully fulfil client requirements, from project planning to completion. The multi-faceted character of the company is evident from the range of disciplines abridged below.



Scope of Services

ENVIRONMENTAL IMPACT MANAGEMENT

- Environmental Impact Assessments (EIAs)
- Basic Assessment processes & Reports (BARs)
- Environmental Management Plans (EMPs)
- Site-specific EMPs
- Water Use License Applications (WULAs)
- Waste License Applications
- Air Emissions Licenses

ENVIRONMENTAL PLANNING

- Environmental Management Systems (conforming to ISO 14001)
- Environmental Site Selections and Planning at Pre-Feasibility Phase
- Environmental Procedures and Environmental Specifications

ENVIRONMENTAL AUDITING & MONITORING

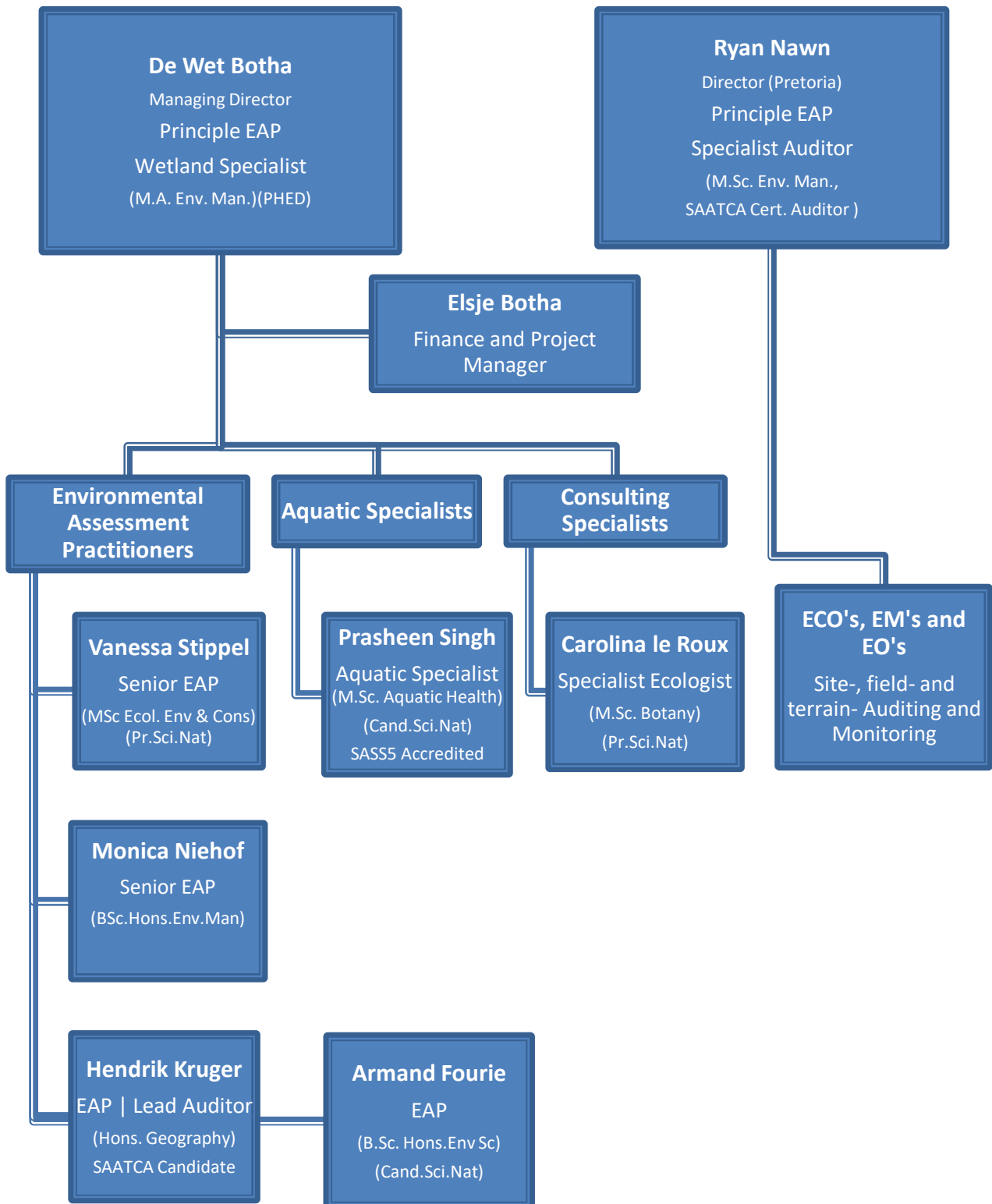
- ISO 14001 Environmental Management Systems
- Environmental Authorisations (and previous RoDs)
- Environmental Management Plans and Programmes for construction projects and mining
- Water Use Licenses
- Waste Licenses
- Green Building developments (conforming to MANUAL-6 & MANUAL-7 of the GBCSA requirements for Green Building)
- All levels of Environmental Monitoring & Control for construction projects representing Clients as:
 - Environmental Officer
 - Environmental Monitor
 - Independent Environmental Control Officer (ECO)

Specialist Solutions

The list of specialist services we offer and facilitate includes, *inter alia*, the following:

- Ecological Habitat Assessments
- Aquatic Health Assessments (including SASS5)
- Wetland and Riparian Habitat assessments and delineation
- Rehabilitation plans and mitigatory strategy
- Aquatic and Ecological Monitoring Plans
- Bio-monitoring
- Biodiversity action plans
- Grassland rehabilitation
- Ridge Studies
- Air Quality Impact Assessments
- Geographic Information System (GIS) mapping
- Sensitivity mapping
- Legislation and process guidance
- Policy Development
- Open Space Management Plan (OSMP)
- Public Participation Processes
- EIA Review
- Specialist Auditing
- In terms of Mining Activities we facilitate:
 - Prospecting Right Applications
 - Prospecting Environmental Management Plans
 - Mining Right Applications
 - Closure Applications
 - Closure Cost Calculations
 - Annual Performance Audits (against relevant permits and licenses)

Company Organogram



Contact Us

Johannesburg:	Pretoria:
Tel No: 087 985 0951	Tel No: 012 342 2974
Fax No: 086 601 4800	Fax No: 086 552 1590
E-mail: prism@prismems.co.za	E-mail: prismpretoria@prismems.co.za
Unit 17 Coldstream Office Park	89 Burns Street
Coldstream Street	Colbyn
Little Falls	Pretoria

Visit our website www.prismems.co.za

or find us on Social Media:



PRISM
ENVIRONMENTAL MANAGEMENT SERVICES