

APPENDIX 10

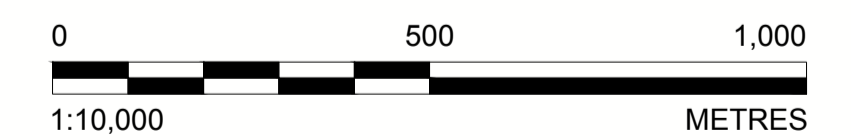
REHABILITATION PLAN



UNIVERSAL COAL CONCEPTUAL LANDFORM DESIGN FOR VANDYKSDRIFT CENTRAL SOUTH 32




SHEET LIST	
SHEET TITLE	SHEET NUMBER
Cover Page	19119414-CP-000
General Arrangement	19119414-GA-001
Initial Box Cut Development - South	19119414-LS002
Mined out Topography - South	19119414-LS-003
Initial Box Cut - North Shaping and Leveling - South	19119414-LS-004
Mined Out Topography - North And Post Mining Landform - South	19119414-LS-005
Mined Out Topography - North Level and Shaping - North	19119414-LS-006
VDDC Post Mining Landform	19119414-LL-007




Path: \\p1e1\vs1\gsadata\Projects\99703 - Reclamation and Closure\People\Conrad\Active Jobs\VDDC info (2019041016) Drawings\1 File Name: 000 Cover Page.dwg

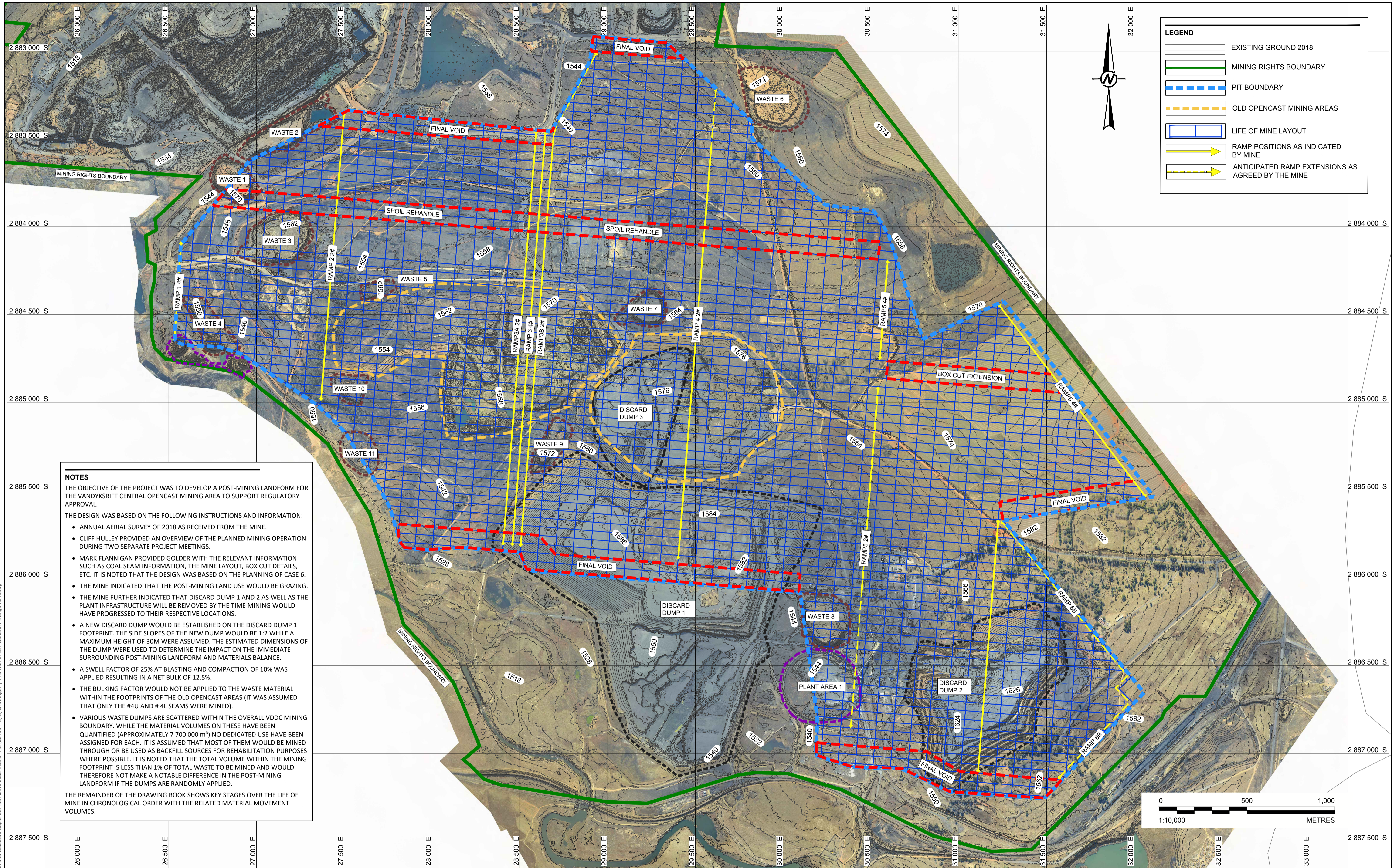
IF THIS MEASUREMENT DOES NOT MATCH WHAT IS SHOWN, THE SHEET SIZE HAS BEEN MODIFIED FROM ISO A1

A	2019-08-30	ISSUE FOR INFORMATION	CB	PB	PB	PB
Rev.	YYYY-MM-DD	DESCRIPTION	PREPARED	DESIGN	REVIEW	APPROVED



F.J. Munn
Tr Eng 530215
30-08-2019

<p>CLIENT UNIVERSAL COAL SOUTH 32 VANDYKSDRIFT CENTRAL</p> <p>CONSULTANT  GOLDER</p> <p style="font-size: x-small;">GOLDER ASSOCIATES AFRICA (PTY) LTD SECOND FLOOR, 43 INGERSOL ROAD PODIUM AT MENLYN, 0181 SOUTH AFRICA [+28] (0) 11 254 4800 www.golder.com</p>	<p>PROJECT CONCEPTUAL LANDFORM DESIGNS FOR VANDYKSDRIFT CENTRAL SOUTH 32</p> <p>TITLE COVER PAGE</p> <p>PROJECT No. 19119414 CONTROL CP Rev. A 1 of 8 004</p> <p style="text-align: right; font-size: large;">000</p>
---	---



LEGEND

- EXISTING GROUND 2018
- MINING RIGHTS BOUNDARY
- PIT BOUNDARY
- OLD OPENCAST MINING AREAS
- LIFE OF MINE LAYOUT
- RAMP POSITIONS AS INDICATED BY MINE
- ANTICIPATED RAMP EXTENSIONS AS AGREED BY THE MINE

NOTES

THE OBJECTIVE OF THE PROJECT WAS TO DEVELOP A POST-MINING LANDFORM FOR THE VANDYKSDRIFT CENTRAL OPENCAST MINING AREA TO SUPPORT REGULATORY APPROVAL.

THE DESIGN WAS BASED ON THE FOLLOWING INSTRUCTIONS AND INFORMATION:

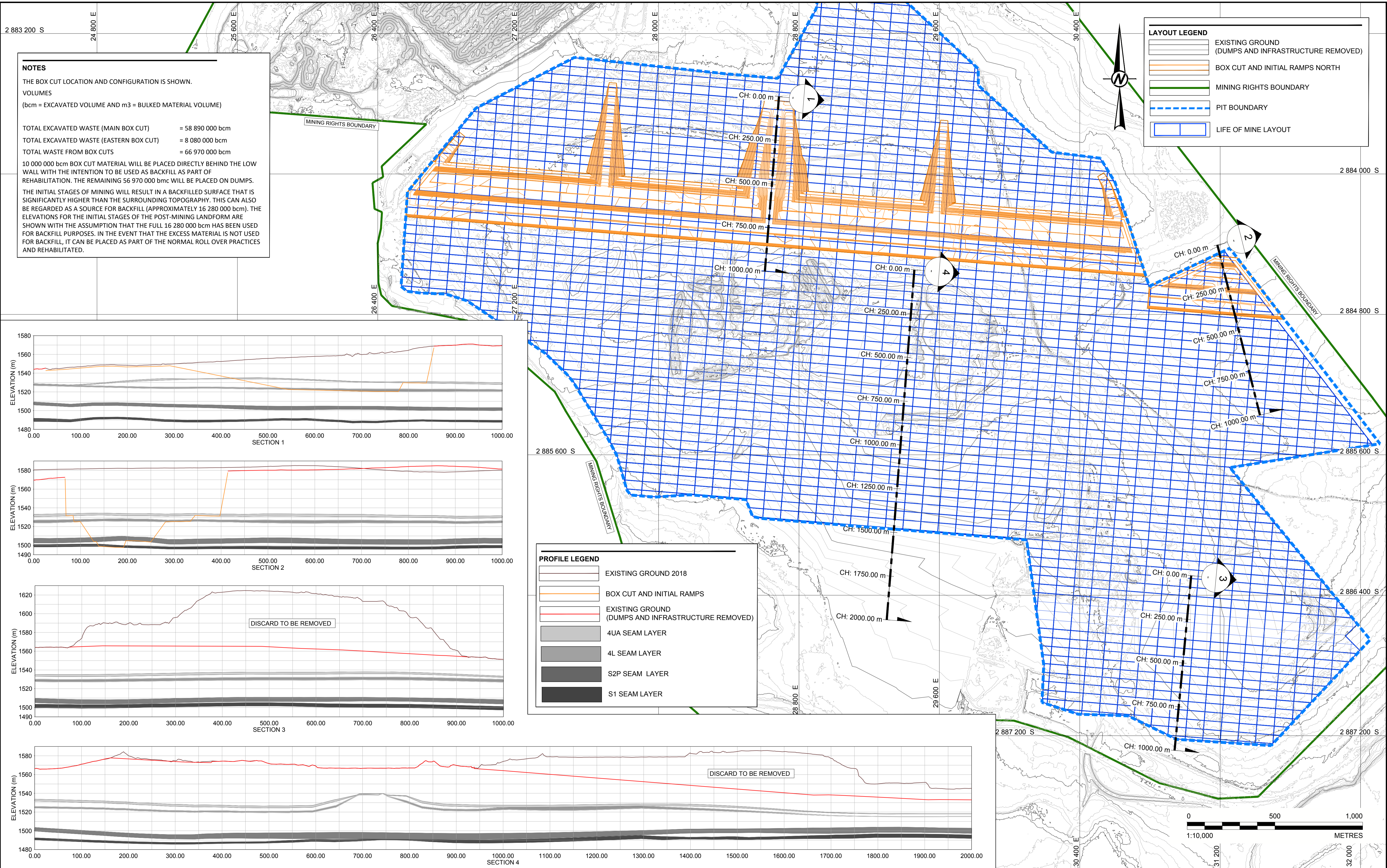
- ANNUAL AERIAL SURVEY OF 2018 AS RECEIVED FROM THE MINE.
- CLIFF HULLEY PROVIDED AN OVERVIEW OF THE PLANNED MINING OPERATION DURING TWO SEPARATE PROJECT MEETINGS.
- MARK FLANNIGAN PROVIDED GOLDBER WITH THE RELEVANT INFORMATION SUCH AS COAL SEAM INFORMATION, THE MINE LAYOUT, BOX CUT DETAILS, ETC. IT IS NOTED THAT THE DESIGN WAS BASED ON THE PLANNING OF CASE 6.
- THE MINE INDICATED THAT THE POST-MINING LAND USE WOULD BE GRAZING.
- THE MINE FURTHER INDICATED THAT DISCARD DUMP 1 AND 2 AS WELL AS THE PLANT INFRASTRUCTURE WILL BE REMOVED BY THE TIME MINING WOULD HAVE PROGRESSED TO THEIR RESPECTIVE LOCATIONS.
- A NEW DISCARD DUMP WOULD BE ESTABLISHED ON THE DISCARD DUMP 1 FOOTPRINT. THE SIDE SLOPES OF THE NEW DUMP WOULD BE 1:2 WHILE A MAXIMUM HEIGHT OF 30M WERE ASSUMED. THE ESTIMATED DIMENSIONS OF THE DUMP WERE USED TO DETERMINE THE IMPACT ON THE IMMEDIATE SURROUNDING POST-MINING LANDFORM AND MATERIALS BALANCE.
- A SWELL FACTOR OF 25% AT BLASTING AND COMPACTION OF 10% WAS APPLIED RESULTING IN A NET BULK OF 12.5%.
- THE BULKING FACTOR WOULD NOT BE APPLIED TO THE WASTE MATERIAL WITHIN THE FOOTPRINTS OF THE OLD OPENCAST AREAS (IT WAS ASSUMED THAT ONLY THE #4U AND #4L SEAMS WERE MINED).
- VARIOUS WASTE DUMPS ARE SCATTERED WITHIN THE OVERALL VDDC MINING BOUNDARY. WHILE THE MATERIAL VOLUMES ON THESE HAVE BEEN QUANTIFIED (APPROXIMATELY 7 700 000 m³) NO DEDICATED USE HAVE BEEN ASSIGNED FOR EACH. IT IS ASSUMED THAT MOST OF THEM WOULD BE MINED THROUGH OR BE USED AS BACKFILL SOURCES FOR REHABILITATION PURPOSES WHERE POSSIBLE. IT IS NOTED THAT THE TOTAL VOLUME WITHIN THE MINING FOOTPRINT IS LESS THAN 1% OF TOTAL WASTE TO BE MINED AND WOULD THEREFORE NOT MAKE A NOTABLE DIFFERENCE IN THE POST-MINING LANDFORM IF THE DUMPS ARE RANDOMLY APPLIED.

THE REMAINDER OF THE DRAWING BOOK SHOWS KEY STAGES OVER THE LIFE OF MINE IN CHRONOLOGICAL ORDER WITH THE RELATED MATERIAL MOVEMENT VOLUMES.

<p>CLIENT UNIVERSAL COAL SOUTH 32 VANDYKSDRIFT CENTRAL</p> <p>CONSULTANT GOLDER</p> <p>GOLDER ASSOCIATES AFRICA (PTY) LTD SECOND FLOOR, 43 INGERSOL ROAD PODIUM AT MENLYN, 0181 SOUTH AFRICA [+28] (0) 11 254 4800 www.golder.com</p>	<p>PROJECT CONCEPTUAL LANDFORM DESIGNS FOR VANDYKSDRIFT CENTRAL SOUTH 32</p> <p>TITLE GENERAL ARRANGEMENT</p> <p>PROJECT No. 19119414</p> <p>CONTROL GA</p> <p>Rev. 2 of 8 A</p> <p>004 001</p>	<p>Rev. 2019-08-30 ISSUE FOR INFORMATION</p> <p>Rev. YYYY-MM-DD DESCRIPTION</p> <p>CB PB PB</p> <p>PREPARED DESIGN REVIEW APPROVED</p>
--	--	--

Path: \\p1-14-54\gsdata\Projects\99703 - Reclamation and Closure\People\Conrad\Active_jobs\VDDC info (2019-04-10)\6 Drawings\1 File Name: 001 General Arrangement.dwg

25 mm IF THIS MEASUREMENT DOES NOT MATCH WHAT IS SHOWN, THE SHEET SIZE HAS BEEN MODIFIED FROM ISO A1



NOTES
 THE BOX CUT LOCATION AND CONFIGURATION IS SHOWN.
VOLUMES
 (bcm = EXCAVATED VOLUME AND m3 = BULKED MATERIAL VOLUME)

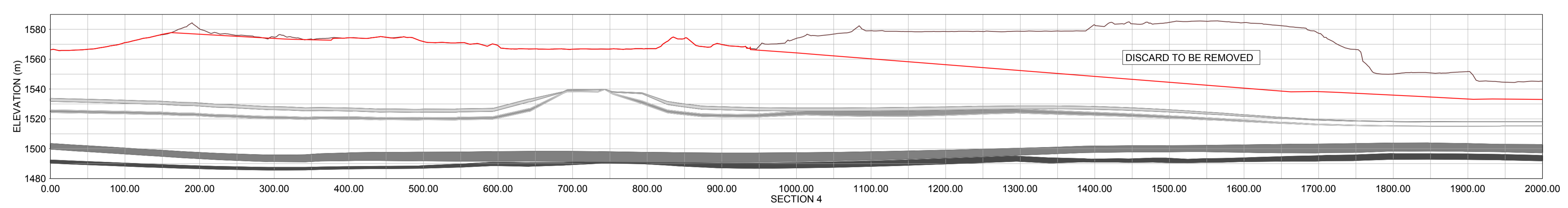
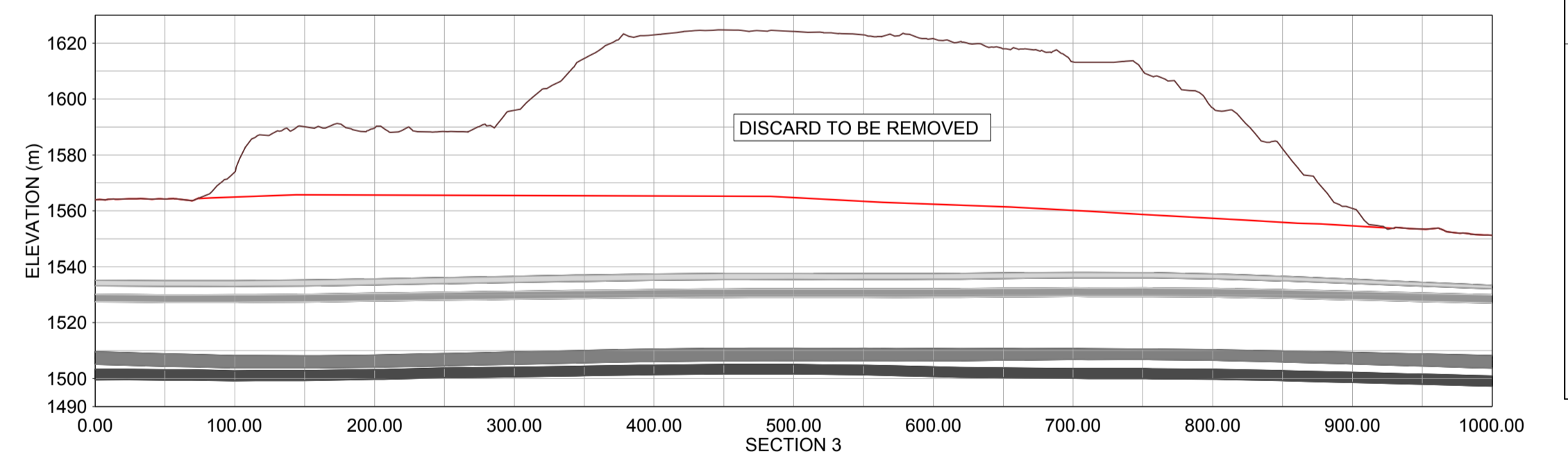
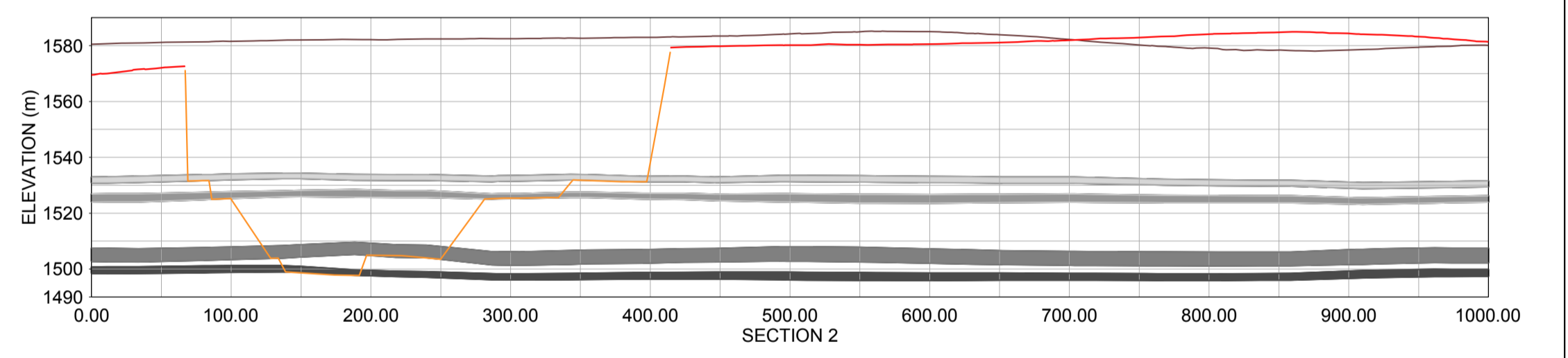
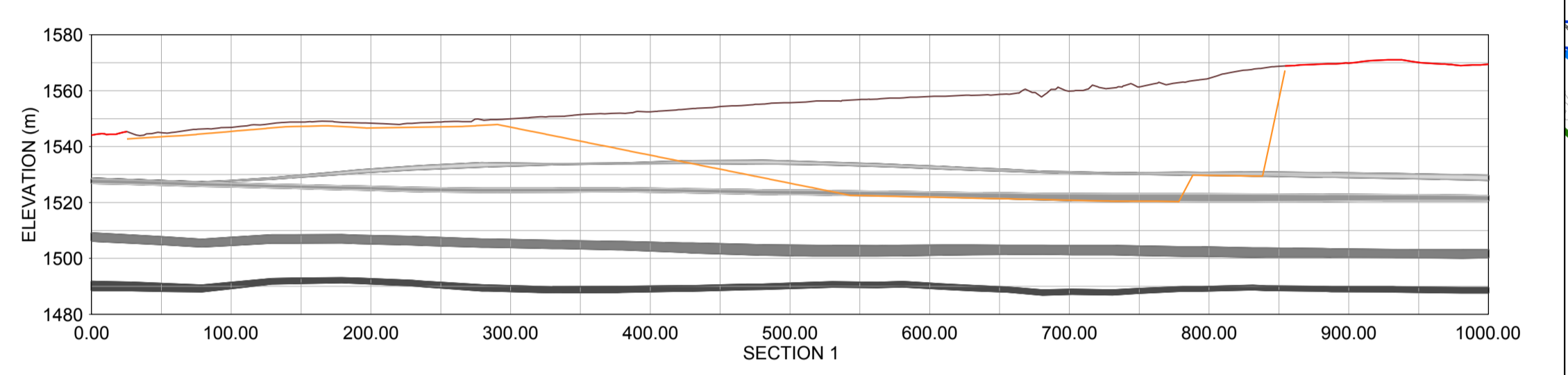
TOTAL EXCAVATED WASTE (MAIN BOX CUT) = 58 890 000 bcm
 TOTAL EXCAVATED WASTE (EASTERN BOX CUT) = 8 080 000 bcm
 TOTAL WASTE FROM BOX CUTS = 66 970 000 bcm

10 000 000 bcm BOX CUT MATERIAL WILL BE PLACED DIRECTLY BEHIND THE LOW WALL WITH THE INTENTION TO BE USED AS BACKFILL AS PART OF REHABILITATION. THE REMAINING 56 970 000 bcm WILL BE PLACED ON DUMPS.

THE INITIAL STAGES OF MINING WILL RESULT IN A BACKFILLED SURFACE THAT IS SIGNIFICANTLY HIGHER THAN THE SURROUNDING TOPOGRAPHY. THIS CAN ALSO BE REGARDED AS A SOURCE FOR BACKFILL (APPROXIMATELY 16 280 000 bcm). THE ELEVATIONS FOR THE INITIAL STAGES OF THE POST-MINING LANDFORM ARE SHOWN WITH THE ASSUMPTION THAT THE FULL 16 280 000 bcm HAS BEEN USED FOR BACKFILL PURPOSES. IN THE EVENT THAT THE EXCESS MATERIAL IS NOT USED FOR BACKFILL, IT CAN BE PLACED AS PART OF THE NORMAL ROLL OVER PRACTICES AND REHABILITATED.

LAYOUT LEGEND

- EXISTING GROUND (DUMPS AND INFRASTRUCTURE REMOVED)
- BOX CUT AND INITIAL RAMPS NORTH
- MINING RIGHTS BOUNDARY
- PIT BOUNDARY
- LIFE OF MINE LAYOUT



PROFILE LEGEND

- EXISTING GROUND 2018
- BOX CUT AND INITIAL RAMPS
- EXISTING GROUND (DUMPS AND INFRASTRUCTURE REMOVED)
- 4UA SEAM LAYER
- 4L SEAM LAYER
- S2P SEAM LAYER
- S1 SEAM LAYER

Path: \\p1e1-4-s1\gsadata\Projects\98703 - Reclamation and Closure\People\Conrad\Active_jobs\19119414\Drawings\1 - File Name: 002 Box Cut Development South.dwg

25 mm IF THIS MEASUREMENT DOES NOT MATCH WHAT IS SHOWN, THE SHEET SIZE HAS BEEN MODIFIED FROM ISO A1

Rev.	2019-08-30	ISSUE FOR INFORMATION	CB	PB	PB
	YYYY-MM-DD	DESCRIPTION	PREPARED	DESIGN	REVIEW APPROVED

CLIENT
**UNIVERSAL COAL SOUTH 32
 VANDYKSDRIFT CENTRAL**

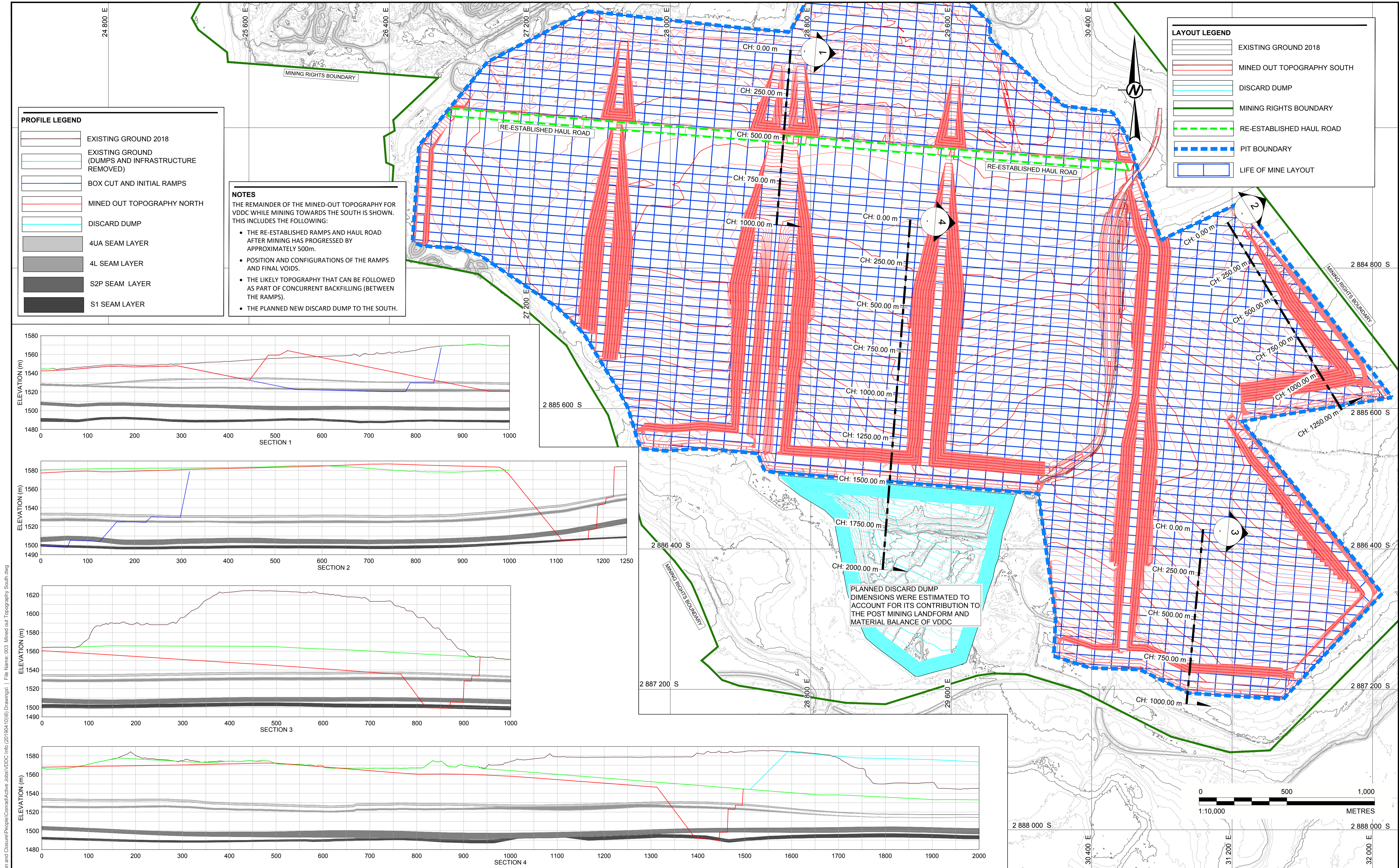
CONSULTANT
GOLDER

GOLDER ASSOCIATES AFRICA (PTY) LTD
 SECOND FLOOR, 43 INGERSOL ROAD
 PODIUM AT MENLYN, 0181
 SOUTH AFRICA
 [+28] (0) 11 254 4800
 www.golder.com

PROJECT
**CONCEPTUAL LANDFORM DESIGNS FOR
 VANDYKSDRIFT CENTRAL SOUTH 32**

TITLE
INITIAL BOX CUT DEVELOPMENT - SOUTH

PROJECT No. 19119414 CONTROL LS Rev. 3 of 8 002



LAYOUT LEGEND

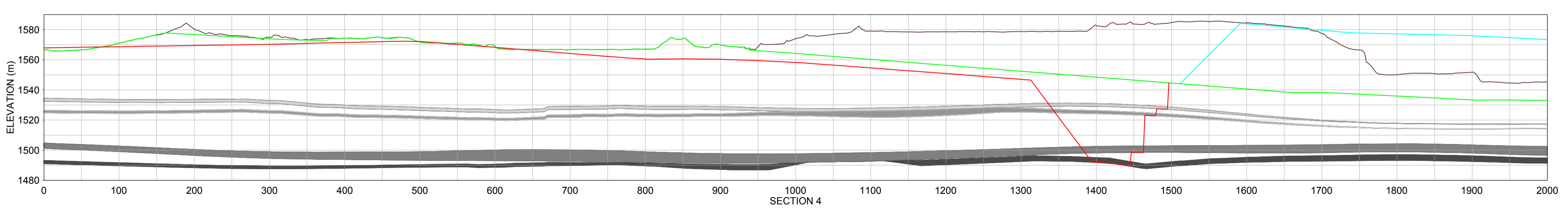
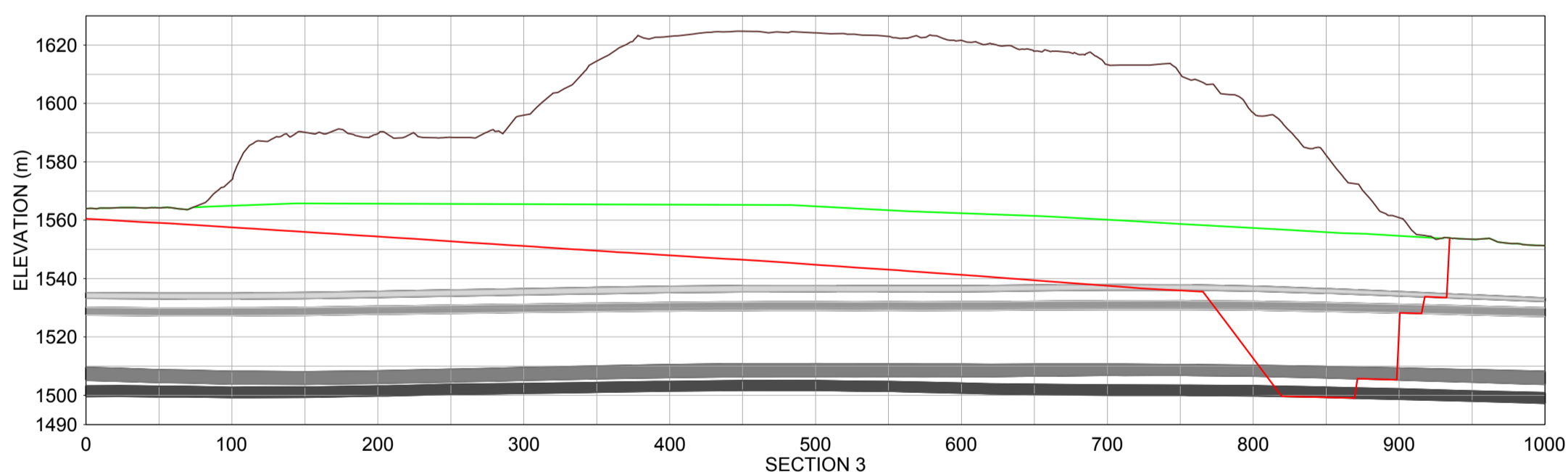
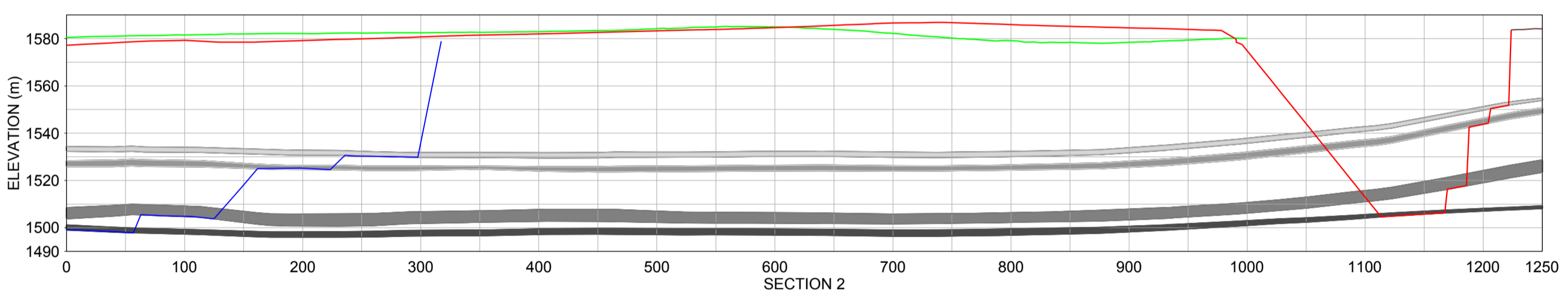
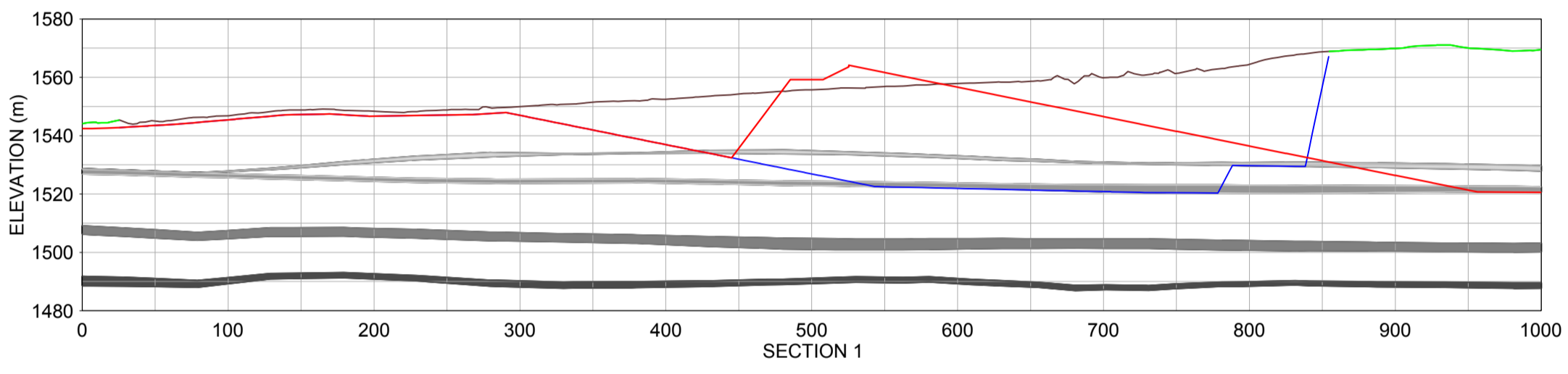
- EXISTING GROUND 2018
- MINED OUT TOPOGRAPHY SOUTH
- DISCARD DUMP
- MINING RIGHTS BOUNDARY
- RE-ESTABLISHED HAUL ROAD
- PIT BOUNDARY
- LIFE OF MINE LAYOUT

PROFILE LEGEND

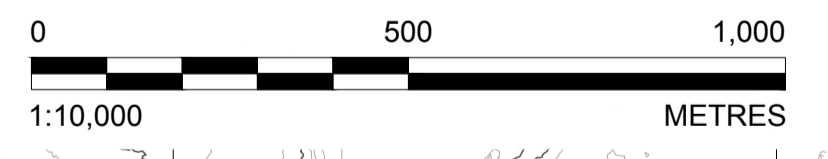
- EXISTING GROUND 2018
- EXISTING GROUND (DUMPS AND INFRASTRUCTURE REMOVED)
- BOX CUT AND INITIAL RAMPS
- MINED OUT TOPOGRAPHY NORTH
- DISCARD DUMP
- 4UA SEAM LAYER
- 4L SEAM LAYER
- S2P SEAM LAYER
- S1 SEAM LAYER

NOTES
 THE REMAINDER OF THE MINED-OUT TOPOGRAPHY FOR VDDC WHILE MINING TOWARDS THE SOUTH IS SHOWN. THIS INCLUDES THE FOLLOWING:

- THE RE-ESTABLISHED RAMPS AND HAUL ROAD AFTER MINING HAS PROGRESSED BY APPROXIMATELY 500m.
- POSITION AND CONFIGURATIONS OF THE RAMPS AND FINAL VOIDS.
- THE LIKELY TOPOGRAPHY THAT CAN BE FOLLOWED AS PART OF CONCURRENT BACKFILLING (BETWEEN THE RAMPS).
- THE PLANNED NEW DISCARD DUMP TO THE SOUTH.



PLANNED DISCARD DUMP DIMENSIONS WERE ESTIMATED TO ACCOUNT FOR ITS CONTRIBUTION TO THE POST MINING LANDFORM AND MATERIAL BALANCE OF VDDC



CLIENT	UNIVERSAL COAL SOUTH 32 VANDYKSDRIFT CENTRAL
CONSULTANT	GOLDER
PROJECT	CONCEPTUAL LANDFORM DESIGNS FOR VANDYKSDRIFT CENTRAL SOUTH 32
TITLE	MINED OUT TOPOGRAPHY - SOUTH
PROJECT No.	19119414
CONTROL	LS
Rev.	4 of 8
Rev.	002

CLIENT
UNIVERSAL COAL SOUTH 32
VANDYKSDRIFT CENTRAL

CONSULTANT
GOLDER

PROJECT
CONCEPTUAL LANDFORM DESIGNS FOR
VANDYKSDRIFT CENTRAL SOUTH 32

TITLE
MINED OUT TOPOGRAPHY - SOUTH

PROJECT No. 19119414 CONTROL LS Rev. 4 of 8 002

GOLDER ASSOCIATES AFRICA (PTY) LTD
SECOND FLOOR, 43 INGERSOL ROAD
PODIUM AT MENLYN, 0181
SOUTH AFRICA
[+28] (0) 11 254 4800
www.golder.com

Rev. 2019-08-30 ISSUE FOR INFORMATION

Rev. YYY-MM-DD DESCRIPTION

CB PB PB
PREPARED DESIGN REVIEW APPROVED

Path: \\p01-14-51\gsadata\Projects\Conrad\Active Jobs\VDDC info (2019-04-10)\6 Drawings\1 File Name: 003 Mined out Topography South.dwg

25 mm IF THIS MEASUREMENT DOES NOT MATCH WHAT IS SHOWN, THE SHEET SIZE HAS BEEN MODIFIED FROM ISO A1

NOTES

IT IS PLANNED THAT THE MINING DIRECTION CHANGES TO THE NORTH WHEN THE SOUTHERN PORTION HAS BEEN MINED AND INCLUDES THE FOLLOWING:

- ESTABLISHMENT OF A NEW BOX CUT JUST TO THE NORTH OF THE ORIGINAL BOX CUT.
- ESTABLISHMENT OF NEW LOW WALL RAMPS AND A HAUL ROAD.
- REHABILITATION OF THE SOUTHERN AREA BY SHAPING OF STEEPER SLOPES TO THE REQUIRED SLOPES.
- MAKING USE OF THE 10 000 000 bcm AND OTHER SOURCES TO BACKFILL AND REHABILITATE THE SOUTHERN AREA WHERE REQUIRED.

INDICATIVE REPROFILING OF THE NEW DISCARD DUMP IS ALSO SHOWN. IT IS NOTED THAT SOME OF THE DISCARD IS LIKELY TO BE SHAPED INTO THE FINAL VOID TO ACHIEVE FLATTER AND MORE STABLE SIDE SLOPES, THEREBY REDUCING THE BACK FILL REQUIRED TO ENSURE THE FINAL VOID IS FREE DRAINING.

THE FOLLOWING DEFINITIONS HAVE BEEN USED:

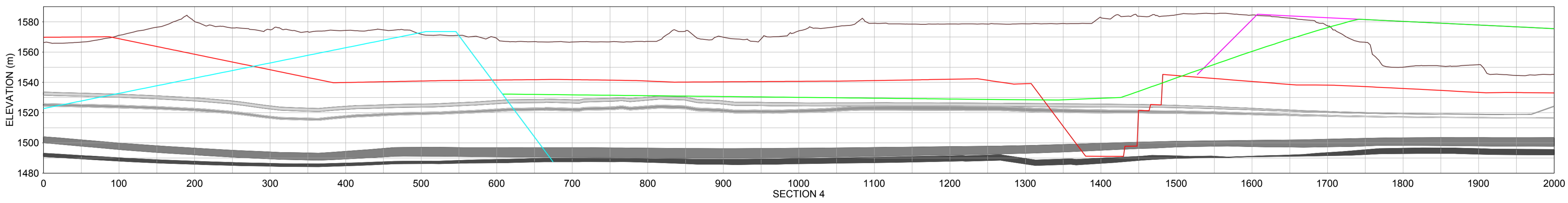
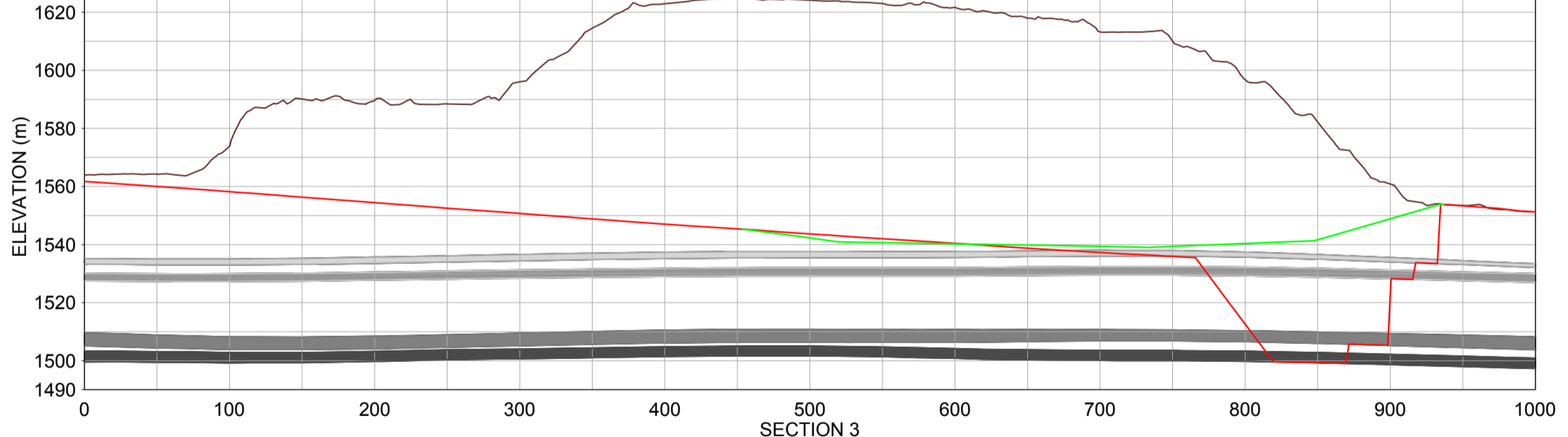
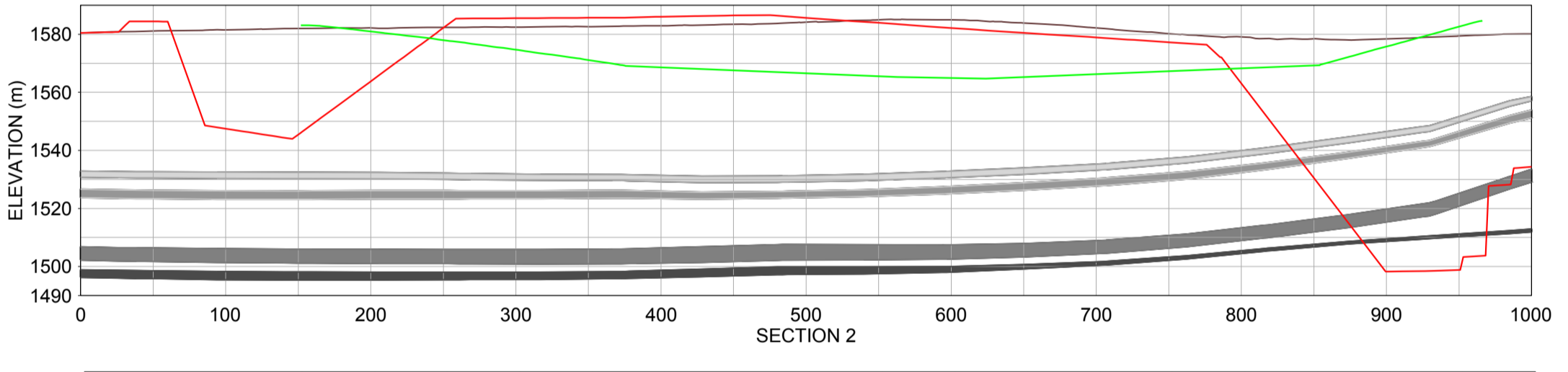
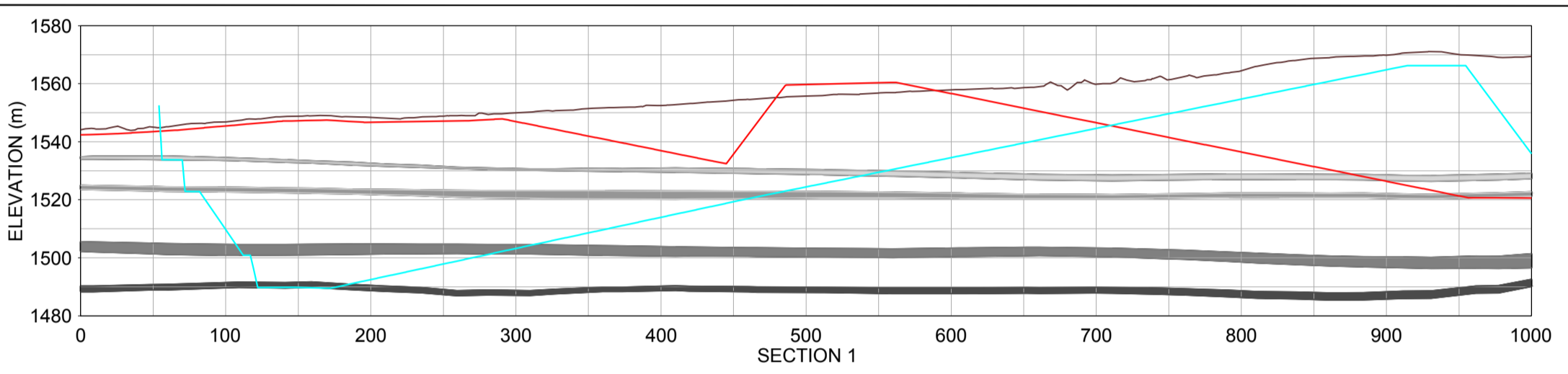
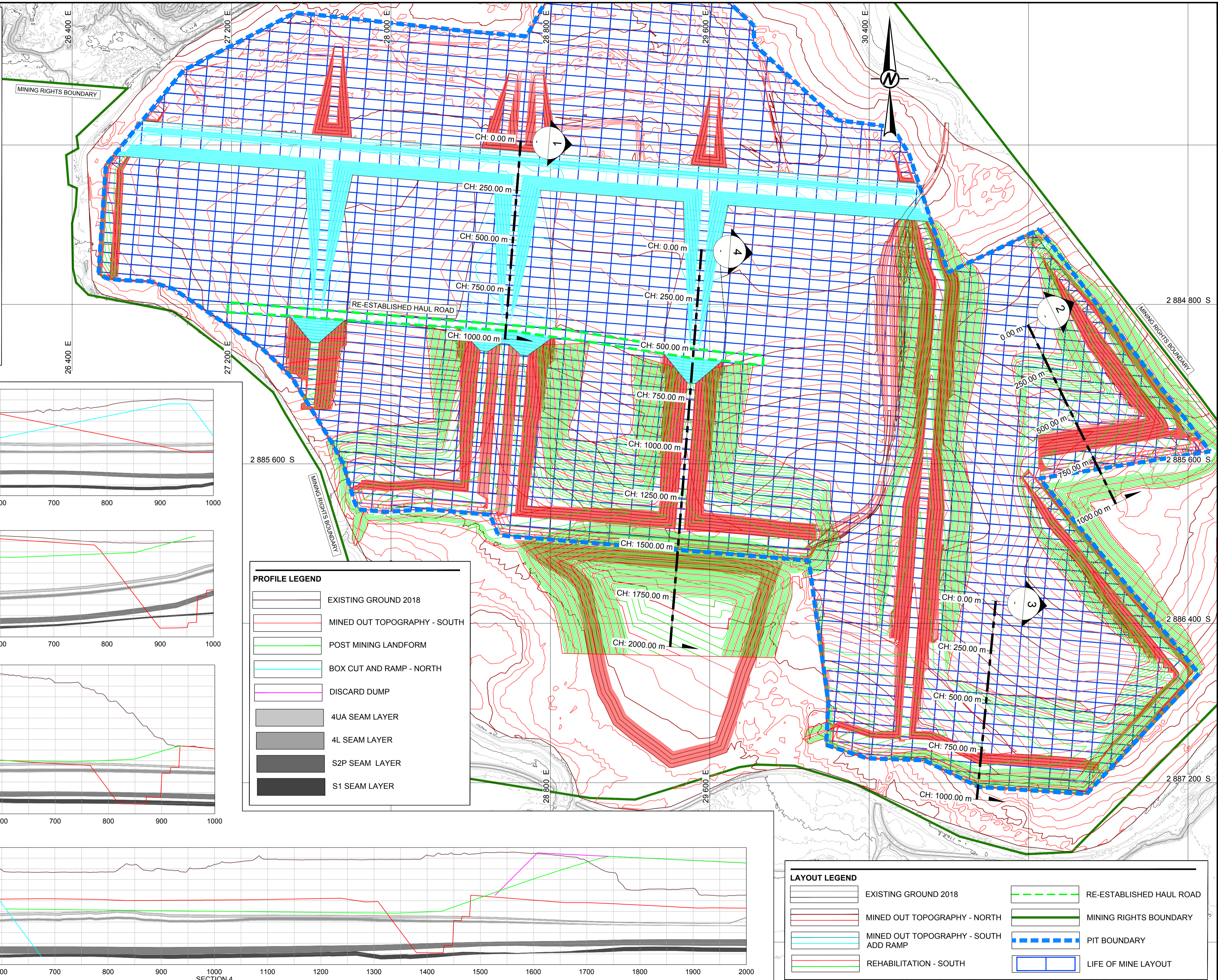
SHAPING: REFERS TO MATERIAL MOVEMENT OF THE IMMEDIATE SURROUNDING MATERIAL FROM HIGHER TO LOWER ELEVATIONS TO ACHIEVE THE REQUIRED ALLOWABLE SLOPES. IN PRACTICE, EVERYTHING CAN BE MOVED DOWNHILL WITH A DOZER IF EFFICIENCY OVER DOZING DISTANCE IS NOT ACCOUNTED FOR. TYPICAL MAXIMUM MOVEMENT DISTANCE IS 250m.

BACKFILL: REFERS TO MATERIAL MOVED BY LOAD AND HAUL FROM WASTE DUMPS.

VOLUMES
(bcm: EXCAVATED VOLUME AND m³: BULKED MATERIAL VOLUME)

BOX CUT AND RAMPS ESTABLISHMENT
TOTAL EXCAVATION (BOX CUT AND RAMPS) = 34 100 000 m³
TOTAL MATERIAL REQUIRED TO RE-ESTABLISH RAMPS AND NEW HAUL ROAD = 21 660 000 m³
REMAINING MATERIAL FOR BACKFILL = 12 450 000 m³

REHABILITATION
TOTAL SHAPING OF VDDC SOUTHERN AREA = 35 860 000 m³
TOTAL BACKFILL REQUIRED TO FILL THE REMAINING LOW-LYING AREAS (PONDING AREAS) AFTER SHAPING = 29 730 000 m³



PROFILE LEGEND

	EXISTING GROUND 2018
	MINED OUT TOPOGRAPHY - SOUTH
	POST MINING LANDFORM
	BOX CUT AND RAMP - NORTH
	DISCARD DUMP
	4UA SEAM LAYER
	4L SEAM LAYER
	S2P SEAM LAYER
	S1 SEAM LAYER

LAYOUT LEGEND

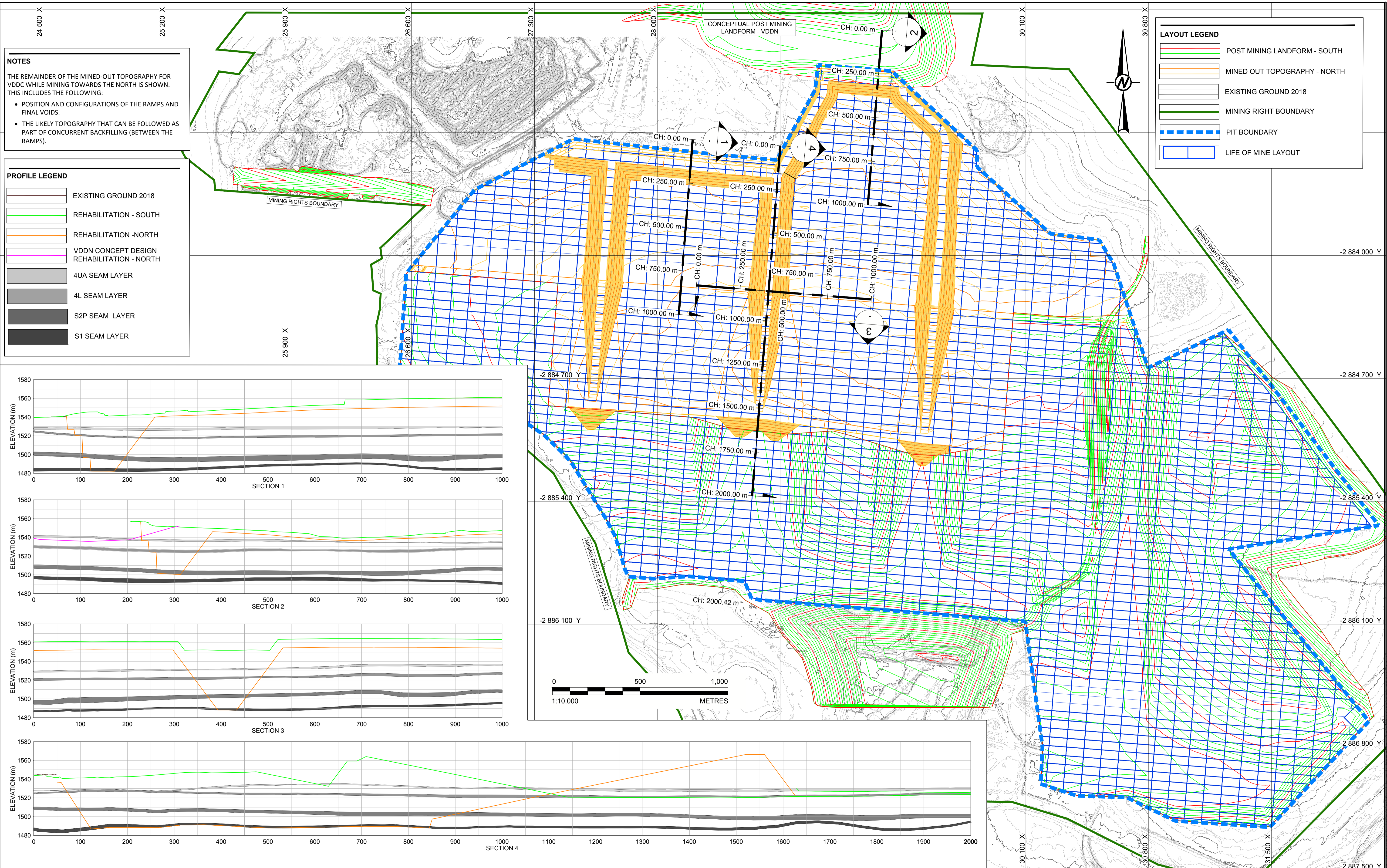
	EXISTING GROUND 2018		RE-ESTABLISHED HAUL ROAD
	MINED OUT TOPOGRAPHY - NORTH		MINING RIGHTS BOUNDARY
	MINED OUT TOPOGRAPHY - SOUTH		PIT BOUNDARY
	ADD RAMP		LIFE OF MINE LAYOUT
	REHABILITATION - SOUTH		

CLIENT	UNIVERSAL COAL SOUTH 32 VANDYKSDRIFT CENTRAL
CONSULTANT	GOLDER
PROJECT	CONCEPTUAL LANDFORM DESIGNS FOR VANDYKSDRIFT CENTRAL SOUTH 32
TITLE	INITIAL BOX CUT - NORTH SHAPING AND LEVELING - SOUTH
PROJECT No.	19119414
CONTROL	LS
Rev.	5 of 8
002	004

Rev.	2019-08-30	ISSUE FOR INFORMATION	CB	PB	PB
PREPARED	DESIGN	REVIEW	APPROVED		

Path: \\p1-141\gsadata\Projects\09703 - Reclamation and Closure\People\Conrad\Active Jobs\VDDC info (2019041016)\Drawings\1 - File Name: 004 - Mined out Topography_box cut ramp North_Rehab South.dwg

25 mm IF THIS MEASUREMENT DOES NOT MATCH WHAT IS SHOWN, THE SHEET SIZE HAS BEEN MODIFIED FROM ISO A1



NOTES

THE REMAINDER OF THE MINED-OUT TOPOGRAPHY FOR VDDC WHILE MINING TOWARDS THE NORTH IS SHOWN. THIS INCLUDES THE FOLLOWING:

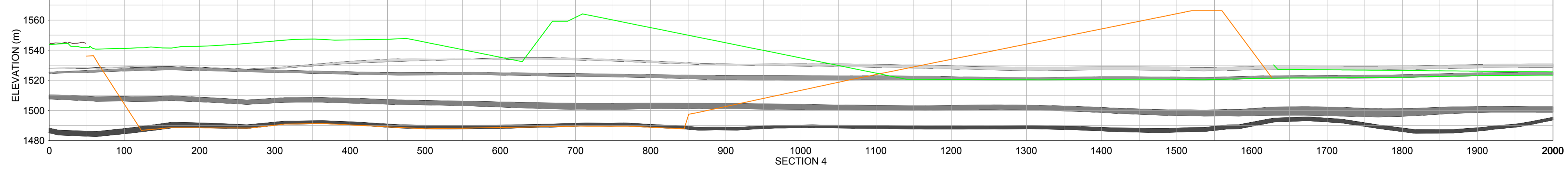
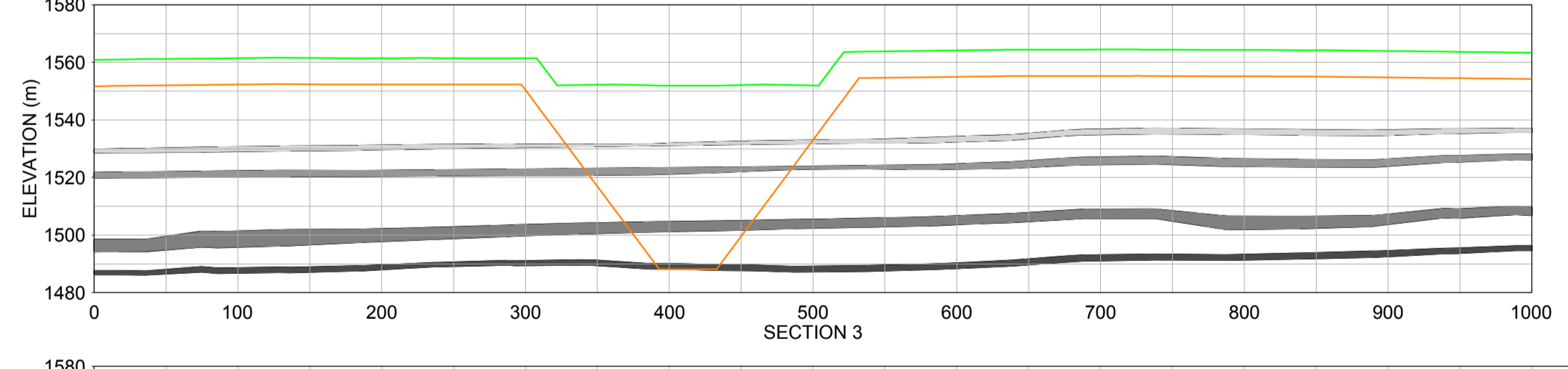
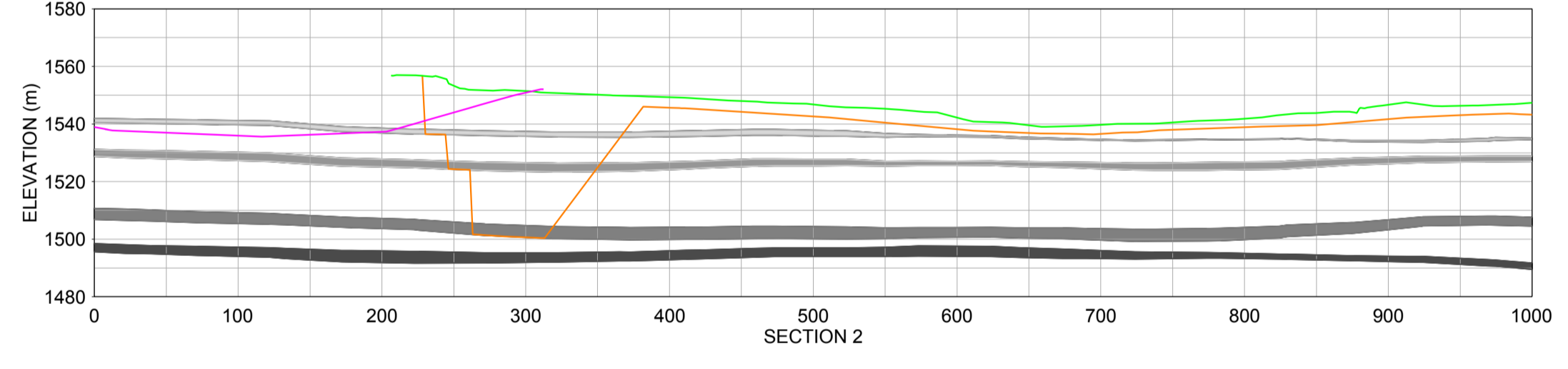
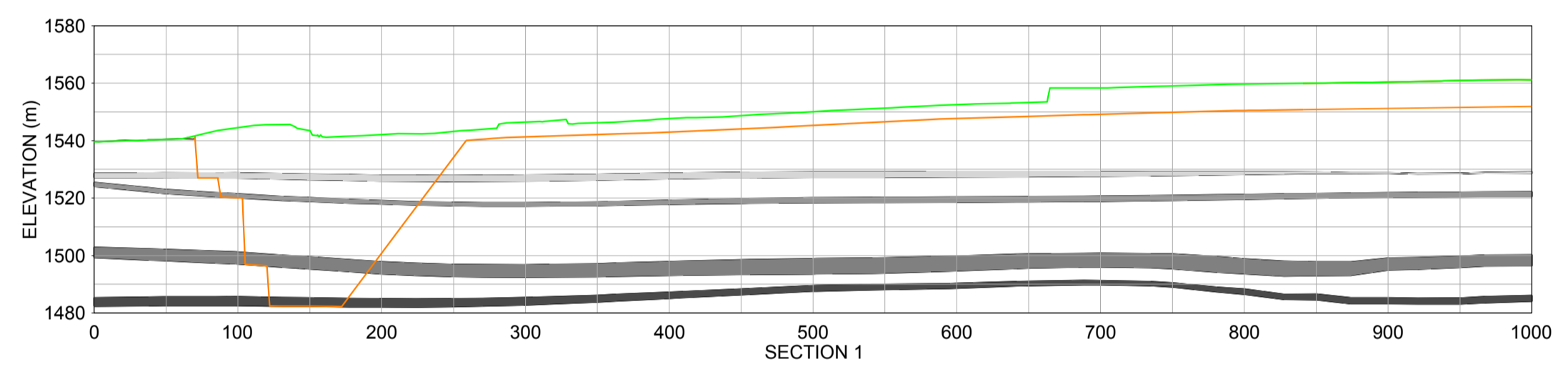
- POSITION AND CONFIGURATIONS OF THE RAMP AND FINAL VOIDS.
- THE LIKELY TOPOGRAPHY THAT CAN BE FOLLOWED AS PART OF CONCURRENT BACKFILLING (BETWEEN THE RAMP).

PROFILE LEGEND

- EXISTING GROUND 2018
- REHABILITATION - SOUTH
- REHABILITATION - NORTH
- VDDN CONCEPT DESIGN REHABILITATION - NORTH
- 4UA SEAM LAYER
- 4L SEAM LAYER
- S2P SEAM LAYER
- S1 SEAM LAYER

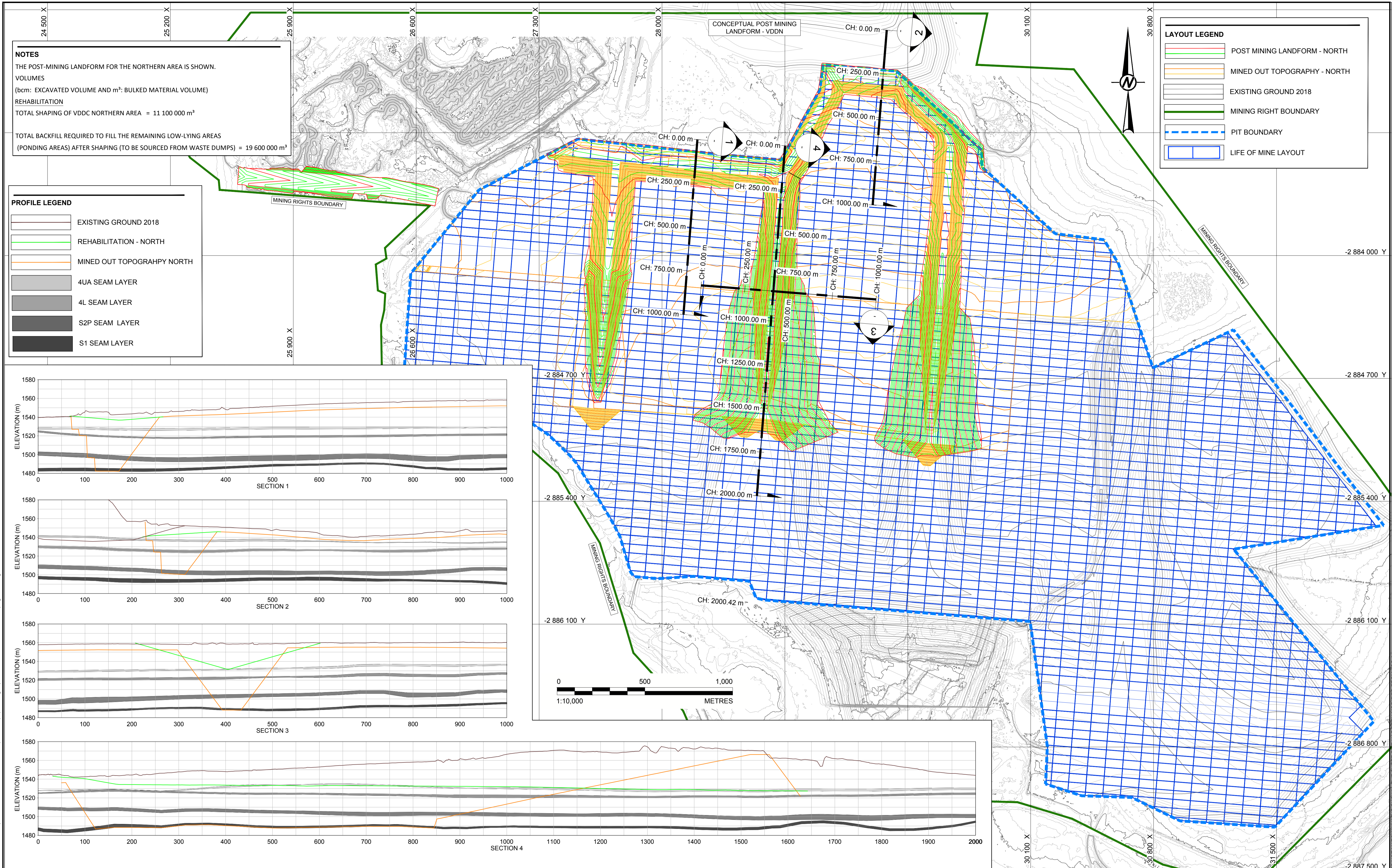
LAYOUT LEGEND

- POST MINING LANDFORM - SOUTH
- MINED OUT TOPOGRAPHY - NORTH
- EXISTING GROUND 2018
- MINING RIGHT BOUNDARY
- PIT BOUNDARY
- LIFE OF MINE LAYOUT



Path: \\p1\vs\lga\data\Projects\9703 - Reclamation and Closure\People\ContractActive Jobs\VDDC Info (2019041016) Drawings\1	FILE NAME: 005 Mined out Topography North Rehab South.dwg
<p>CLIENT UNIVERSAL COAL SOUTH 32 VANDYKSDRIFT CENTRAL</p> <p>CONSULTANT GOLDER</p> <p>GOLDER ASSOCIATES AFRICA (PTY) LTD SECOND FLOOR, 43 INGERSOL ROAD PODIUM AT MENLYN, 0181 SOUTH AFRICA [+28] (0) 11 254 4800 www.golder.com</p>	
<p>PROJECT CONCEPTUAL LANDFORM DESIGNS FOR VANDYKSDRIFT CENTRAL SOUTH 32</p> <p>TITLE MINED OUT TOPOGRAPHY - NORTH AND POST MINING LANDFORM - SOUTH</p>	<p>PROJECT No. 19119414</p> <p>CONTROL LS</p> <p>Rev. 6 of 8 A</p> <p>002 005</p>
<p>A 2019-08-30 ISSUE FOR INFORMATION</p> <p>Rev. YYYY-MM-DD DESCRIPTION</p>	<p>CB PB PB</p> <p>PREPARED DESIGN REVIEW APPROVED</p>

25 mm IF THIS MEASUREMENT DOES NOT MATCH WHAT IS SHOWN, THE SHEET SIZE HAS BEEN MODIFIED FROM ISO A1



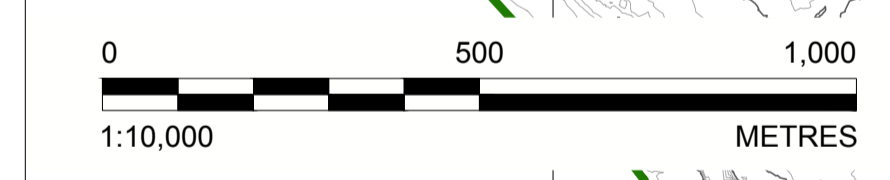
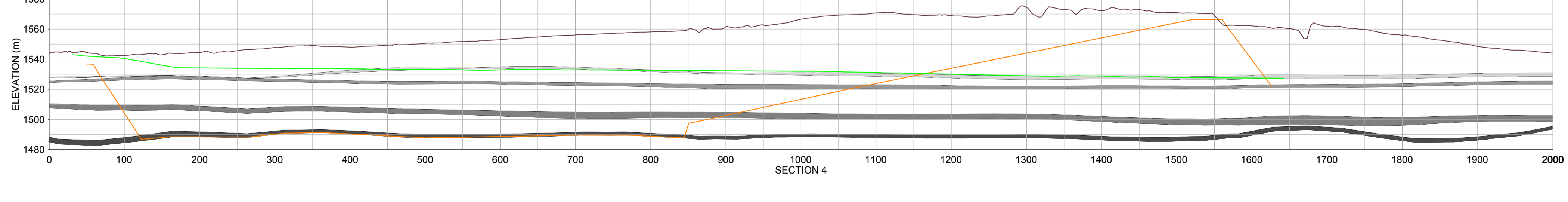
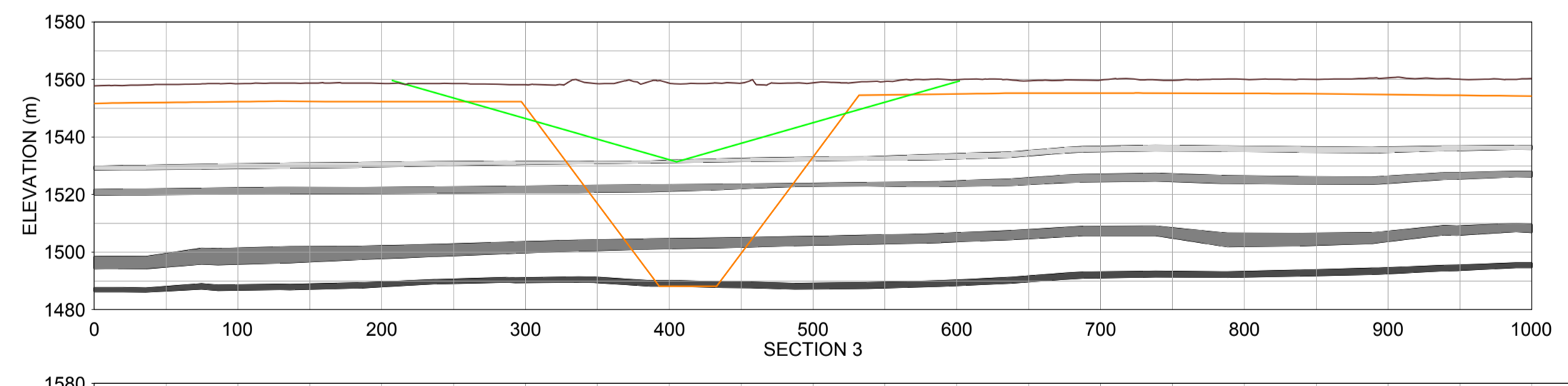
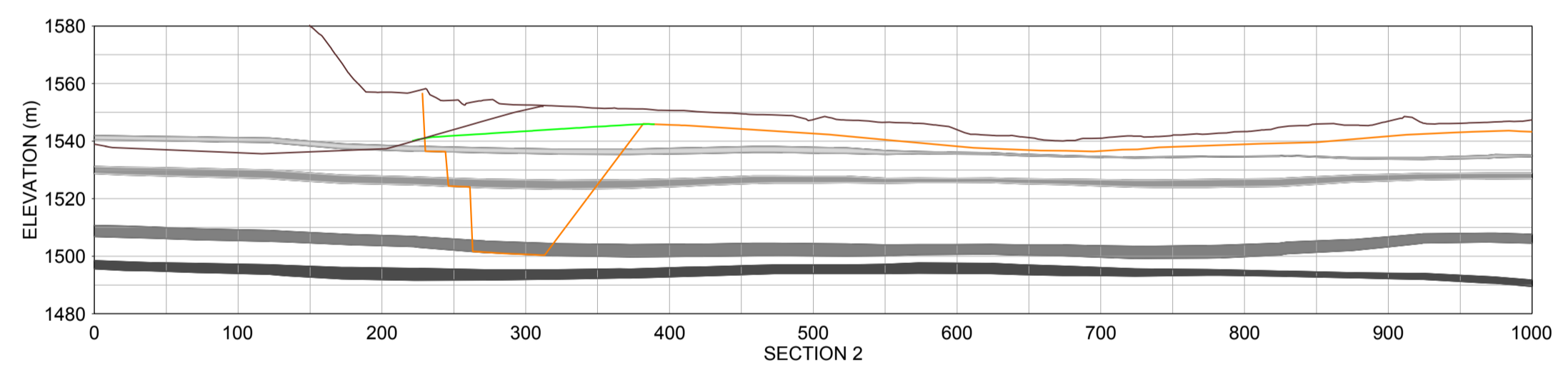
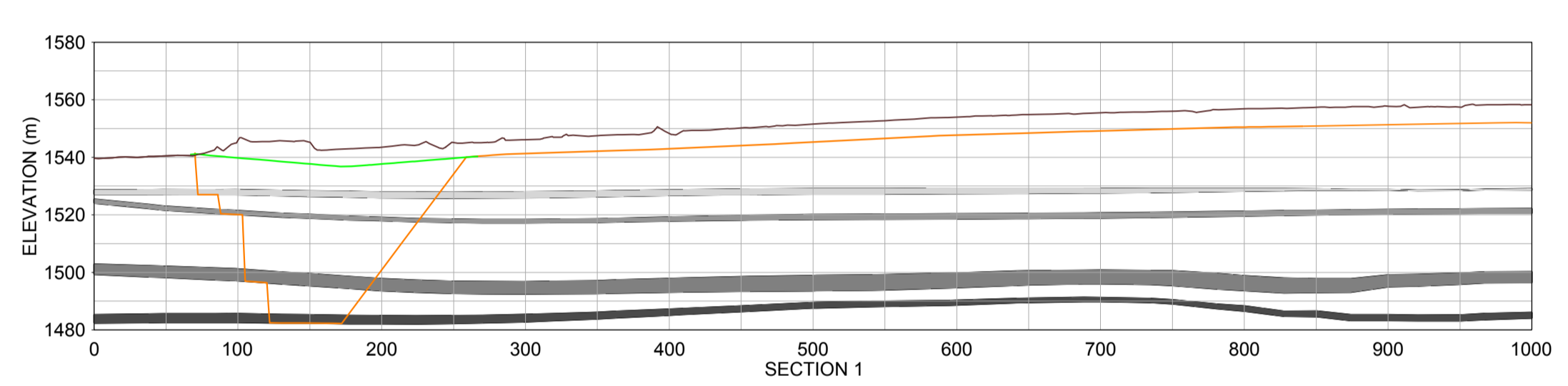
NOTES
 THE POST-MINING LANDFORM FOR THE NORTHERN AREA IS SHOWN.
VOLUMES
 (bcm: EXCAVATED VOLUME AND m³: BULKED MATERIAL VOLUME)
REHABILITATION
 TOTAL SHAPING OF VDDC NORTHERN AREA = 11 100 000 m³
 TOTAL BACKFILL REQUIRED TO FILL THE REMAINING LOW-LYING AREAS
 (PONDING AREAS) AFTER SHAPING (TO BE SOURCED FROM WASTE DUMPS) = 19 600 000 m³

LAYOUT LEGEND

	POST MINING LANDFORM - NORTH
	MINED OUT TOPOGRAPHY - NORTH
	EXISTING GROUND 2018
	MINING RIGHT BOUNDARY
	PIT BOUNDARY
	LIFE OF MINE LAYOUT

PROFILE LEGEND

	EXISTING GROUND 2018
	REHABILITATION - NORTH
	MINED OUT TOPOGRAPHY NORTH
	4UA SEAM LAYER
	4L SEAM LAYER
	S2P SEAM LAYER
	S1 SEAM LAYER



Path: \\p1\vs\st\gdata\Projects\9703 - Reclamation and Closure\People\ContractActive Jobs\VDDC Info (2019041016) Drawings\1 - File Name: 006 Rehab and Shaping North.dwg	CLIENT UNIVERSAL COAL SOUTH 32 VANDYKSDRIFT CENTRAL	CONSULTANT
Rev. 2019-08-30 ISSUE FOR INFORMATION	PREPARED CB	DESIGN PB
Rev. YYYY-MM-DD DESCRIPTION	REVIEW PB	APPROVED

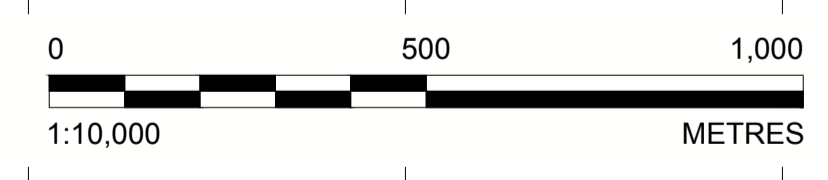
PROJECT CONCEPTUAL LANDFORM DESIGNS FOR VANDYKSDRIFT CENTRAL SOUTH 32	TITLE MINED OUT TOPOGRAPHY - NORTH LEVELING AND SHAPING - NORTH
PROJECT No. 19119414	CONTROL LS
Rev. 7 of 8	002
GOLDER ASSOCIATES AFRICA (PTY) LTD SECOND FLOOR, 43 INGERSOL ROAD PODIUM AT MENLYN, 0181 SOUTH AFRICA [+28] (0) 11 254 4800 www.golder.com	

25 mm IF THIS MEASUREMENT DOES NOT MATCH WHAT IS SHOWN, THE SHEET SIZE HAS BEEN MODIFIED FROM ISO A1



LEGEND

- EXISTING GROUND 2018
- VDDC POST MINING LANDFORM
- MINING RIGHTS BOUNDARY
- PIT BOUNDARY
- CRITICAL DRAINAGE PATHS



<p>CLIENT UNIVERSAL COAL SOUTH 32 VANDYKSDRIFT CENTRAL</p> <p>CONSULTANT GOLDER</p> <p>GOLDER ASSOCIATES AFRICA (PTY) LTD SECOND FLOOR, 43 INGERSOL ROAD PODIUM AT MENLYN, 0181 SOUTH AFRICA [+28] (0) 11 254 4800 www.golder.com</p>		<p>PROJECT CONCEPTUAL LANDFORM DESIGNS FOR VANDYKSDRIFT CENTRAL SOUTH 32</p> <p>TITLE VDDC POST MINING LANDFORM</p> <p>PROJECT No. 19119414 CONTROL LL Rev. 8 of 8 004</p>	
<p>Rev. 2018-08-30 ISSUE FOR INFORMATION CB PB PB</p>		<p>PREPARED DESIGN REVIEW APPROVED</p>	

Path: \\p1es1\rs1\gsadata\Projects\09703 - Reclamation and Closure\People\ConradActive_jobs\VDDC info (2019041016)\Drawings\1 File Name: 007 Post Mining Landform.dwg

25 mm IF THIS MEASUREMENT DOES NOT MATCH WHAT IS SHOWN, THE SHEET SIZE HAS BEEN MODIFIED FROM ISO A1