




ENVIRIDI  
ENVIRONMENTAL CONSULTANTS

**BAUBA A HLABIRWA INVESTMENTS  
(PTY) LTD -  
MOEIJELIK MINE**

**LIMPOPO PROVINCE**

## DOCUMENT CONTROL, QUALITY CONTROL AND DISCLAIMER

Report	Bauba A Hlabirwa Investments (Pty) Ltd - Moeijelijk Mine. Limpopo Province		
Client	Red Kite Environmental Solutions (Pty) Ltd PO Box 32677 Totiusdal 0134		
Report Number	RK20202/MM/LEDET/ECO	Status	Letter of Recommendation
Draft Report	11 February 2020	Report Date	February 2020

Responsible person	Date	Responsibility	Signature
Ms Corlien Lambrechts B.Sc. (Hons) Environmental Management, Zoology <i>Pr.Sci.Nat.</i> Registration number: 009135 EAPASA Registration number: 2020/935	21/02/2020	Specialist	

## LIMITATIONS AND ASSUMPTIONS

- The specialist responsible for this study reserves the right to amend this report, recommendations and/or conclusions at any stage should any additional or otherwise significant information come to light.

## TABLE OF CONTENTS

Page

1	Introduction .....	5
1.1	Background and Project Information .....	5
2	Scope of Work .....	5
2.1	Scope of Work and Objective.....	5
3	Methodology .....	6
4	Data obtained: Literature and field assessment .....	Error! Bookmark not defined.
4.1	Consideration of Background Information .....	6
4.2	Nature and Risks associated with additional activities on existing footprints.....	7
5	Recommendations.....	8
6	References .....	8
7	Appendices.....	9

## List of Figures

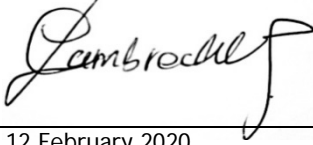
Page

Figure 1: Layout of activities (existing) .....	6
---	---

## DECLARATION OF INDEPENDENCE

The specialist investigator responsible for conducting this particular specialist study declares that:

- At the time of conducting the study and compiling this report I did not have any interest, hidden or otherwise, in the proposed development that this study has reference to, except for financial compensation for work done in a professional capacity;
- Work performed for this study was done in an objective manner. Even if this study results in views and findings that are not favourable to the client/applicant, I will not be affected in any manner by the outcome of any environmental process of which this report may form a part, other than being a member of the general public;
- I declare that there are no circumstances that may compromise my objectivity in performing this specialist investigation. I do not necessarily object to or endorse the proposed development, but aim to present facts, findings and recommendations based on relevant professional experience and scientific data;
- I do not have any influence over decisions made by the governing authorities; should I, at any point, consider myself to be in conflict with any of the above declarations, I shall formally submit a Notice of Withdrawal to all relevant parties and formally register as an Interested and Affected Party;
- I undertake to disclose all material information in my possession that reasonably has or may have the potential of influencing any decision to be taken with respect to the application by a competent authority to such a relevant authority and the applicant;
- I have expertise and experience in conducting specialist reports relevant to this application, including knowledge of the Act, regulations and guidelines that have relevance to the proposed activity;
- I will comply with the Act, regulations and all other applicable legislation;
- All the particulars furnished by me in this document are true and correct; and
- I realize that a false declaration is an offence in terms of Regulation 71 of NEMA and is punishable in terms of section 24F of the Act; and
- I have been formally accredited by the Department of Water and Sanitation (DWS) in association with the National Aquatic Ecosystem Health Monitoring programme for application of the SASS5 method.

Signature of Specialist	
Date	12 February 2020

# 1 INTRODUCTION

## 1.1 Background and Project Information

Red Kite Environmental Solutions (Pty) Ltd (“Red Kite”) appointed Enviridi Environmental Consultants Pty (Ltd) (Enviridi) to conduct an initial assessment and make recommendations based on a request received from Limpopo Department of Economic Development, Environment and Tourism (LDEDET) as part of the Environmental Authorisation Application of the Moeijelijk Mine.

# 2 SCOPE OF WORK

## 2.1 Scope of Work and Objective

Enviridi Environmental Consultants (Pty) Ltd was appointed to assess the situation and risk based on a formal concern noted by LDEDET regarding risk to biodiversity and provide input for the need of an offset strategy based on the latest application submitted. LDEDET stated that the development falls within an Ecological Support Area 2. Information received from the client includes the following:

Bauba A Hlabirwa Mining Investments (Pty) Ltd proposes to reuse or reclaim the tailings material produced by the existing wash plant on site in order to minimise the residue stockpiled on site and to maximise recycling.

The tailings material is proposed to be reclaimed or reused in the following ways:

- A portion of the material will be used to backfill the opencast voids of the operation as part of the rehabilitation efforts of the mine. Backfilling with tailings will mainly take place in voids situated on the farm Moeijelijk 412 KS. However, the boundary pillar between Sefateng Chrome Mine and Moeijelijk Mine has been mined and as such a portion of the tailings being used for backfilling by Bauba will take place on the farm Zwartkoppies 412 KS (Sefateng Chrome Mine).
- A portion of the material will be used in brick-making. The bricks will potentially be used for on-site for the construction of infrastructure, as well as for community projects.
- A portion of the tailings material will be used in cement mixing for use in onsite construction. When necessary or economically viable, Bauba proposes to sell tailings to third parties for further reclamation at off-site operations.

To facilitate the reuse of the tailings, whilst minimising the potential environmental impacts of the reuse of the tailings material, a preconcentrator will be installed in the existing wash plant. The purpose of the preconcentrator is to maximize the extraction of chrome in the wash plant process, which reduces the chrome content in the tailings material. After implementation of the preconcentrator it is expected that the tailings material produced by the wash plant will largely comprise of silica, representative of the waste rock and overburden material found on the mining area.

In summary, the tailings will be completely dewatered and de-gritted with an incline dewatering screen situated next to the wet tailings pad, a conveyor will discharge the dewatered tailings onto the wet tailings pad. Once the tailings are sufficiently dry, the tailings are either stored on the existing dry tailings stockpile or transported to the opencast void for use in backfilling.



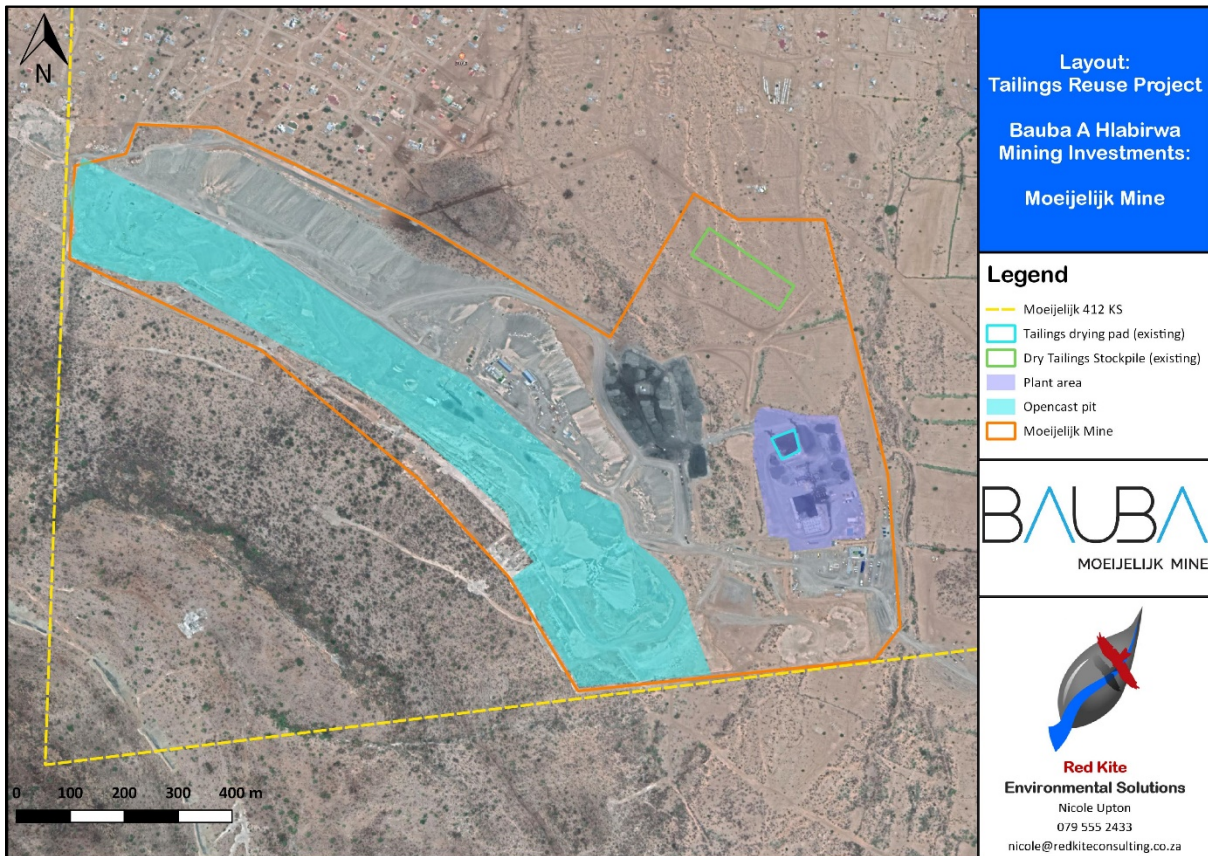


Figure 1: Layout of activities (existing)

### 3 METHODOLOGY

Information utilized in assessment for the need of the compilation of an Offset strategy included the following:

- Background Information were assessed including comparison of the latest studies available and the extent of areas which were ecologically assessed;
- The Scope of activities, current status of operations and if any new areas will be impacted, altered;
- The nature of the additional activities proposed and if they inherently constitute risk to the environment in terms of Ecology.

### 4 CONSIDERATION OF IMPACTS

#### 4.1 Consideration of Background Information

Moeijelijk has been awarded with an Approved EIA/EMPr in 2015, for which an S102 Amendment were applicable and applied for in 2017. A new application to extend their workings towards underground was applied for in 2018.

Several Ecological Assessments has taken place and has adequately assessed the nature and extent of impacts based on the Moeijelijk Chrome Mine workings. The latest specialist reports for ecology took place in 2017:

- Environment Research Consulting (2017) Vegetation Diversity Assessment - Bauba A Hlabirwa Mining Investments - Moeijelijk Chrome Mine<sup>1</sup>;
- Prescali Environmental Consultants (Pty) Ltd (2017) Bauba A Hlabirwa Mining Investments (Pty) Ltd: Moeijelijk Fauna Terrestrial Biodiversity Assessment<sup>2</sup>

<sup>1</sup> (Environment Research Consulting , 2017)

<sup>2</sup> (Prescali Environmental Consultants (Pty) Ltd, 2017).

The following activities which necessitates the amendment of the Mining Right and Water Use License were assessed:

- The extension of the existing opencast pit across various watercourses to access the remainder of the LG6 on the Mining Right area;
- Mining of all UG on the slope above the current opencast pit;
- The development of a new opencast pit across various watercourses to access the LG2 and LG3 chromitite on the Mining Right area;
- The extension of the ROM stockpile area;
- The construction of a river crossing (culvert);
- Construction of wash plant; and
- Construction of residue drying and stockpiling facilities.

Both of these assessments included all footprints (as shown in Figure 1) and no new footprints will be developed and no new habitat will be cleared or altered other than which was originally assessed. The wash plant area, the opencast and the drying pads as described within the latest scope and Figure 1 were included in the available Ecological (2017) assessments.

A formal management plan for both the Flora and Fauna of the Moeijelijk Chrome Mine has been included devised by the specialists and incorporated into the existing EMPR and Audited in terms of compliance on an annual basis.

## 4.2 Nature and Risks associated with additional activities on existing footprints

As mentioned above, to facilitate the reuse of the tailings, whilst minimising the potential environmental impacts of the reuse of the tailings material, a preconcentrator will be installed in the existing wash plant. The purpose of the preconcentrator is to maximize the extraction of chrome in the wash plant process, which reduces the chrome content in the tailings material. After implementation of the preconcentrator, it is expected that the tailings material produced by the wash plant will largely comprise of silica, representative of the waste rock and overburden material found on the mining area.

In summary, the tailings will be completely dewatered and de-gritted with an incline dewatering screen situated next to the wet tailings pad, a conveyor will discharge the dewatered tailings onto the wet tailings pad. Once the tailings are sufficiently dry, the tailings are either stored on the existing dry tailings stockpile or transported to the opencast void for use in backfilling.

No additional risk to the ecology based on this information is expected, since the sensitive areas associated with the project falls within the Mountainous areas outside of the developed footprints. All the footprints of the Moeijelijk mine has been assessed in terms of Ecology and no new impacts on vegetation or habitat will be disturbed.

The backfilling of the chrome-reduced dry tailings will have the following advantages:

- Minimising the footprint and residue stockpiles remaining after rehabilitation;
- Minimised the dirty footprint by preventing the large-scale development of a Tailings Storage Facility;
- Recycling and Reuse of existing material for rehabilitation and reducing the Chrome content of the material in the process before rehabilitation.

Backfilling should however take cognisance of the natural geological sequences and be covered by suitable layers overburden/subsoil and the top layer of topsoil to allow for vegetation re-establishment once the area has been sloped and rehabilitated.

## 5 CONCLUSION AND RECOMMENDATIONS

Since several Ecological Assessments has taken place and has adequately assessed the nature and extent of impacts based on the Moeijelijk Chrome Mine workings. The latest specialist reports for ecology took place in 2017:

- Environment Research Consulting (2017) *Vegetation Diversity Assessment - Bauba A Hlabirwa Mining Investments - Moeijelijk Chrome Mine*<sup>3</sup>;
- Prescali Environmental Consultants (Pty) Ltd (2017) *Bauba A Hlabirwa Mining Investments (Pty) Ltd: Moeijelijk Fauna Terrestrial Biodiversity Assessment*<sup>4</sup>

Both of these assessments included all footprints (as shown in Figure 1) and no new footprints will be developed and no new habitat will be cleared or altered other than which was originally assessed. The wash plant area, the opencast and the drying pads as described within the latest scope and Figure 1 were included in the available Ecological (2017) assessments.

A formal management plan for both the Flora and Fauna of the Moeijelijk Chrome Mine has been included devised by the specialists and incorporated into the existing EMPR and Audited in terms of compliance on an annual basis.

No additional risk to the ecology based on this information is expected, since the sensitive areas associated with the project falls within the Mountainous areas outside of the developed footprints. All the footprints of the Moeijelijk mine has been assessed in terms of Ecology and no new impacts on vegetation or habitat will be disturbed.

Backfilling should however take cognisance of the natural geological sequences and be covered by suitable layers overburden/subsoil and the top layer of topsoil to allow for vegetation re-establishment once the area has been sloped and rehabilitated.

Therefore, it is the opinion of the specialist that no Offset agreement will be necessary or warranted for the non-substantial changes and backfilling of the tailings since these aspects were already assessed and no new impacts to the ecology have occurred or are proposed that was not already assessed as part of the previous application made (and approved). No new footprints will be impacted.

## 6 REFERENCES

- Environment Research Consulting . (2017). *Vegetation Diversity Assessment - Bauba A Hlabirwa Mining Investments - Moeijelijk Chrome Mine*;
- Prescali Environmental Consultants (Pty) Ltd. (2017). *Bauba A Hlabirwa Mining Investments (Pty) Ltd: Moeijelijk Fauna Terrestrial Biodiversity Assessment*.

---

<sup>3</sup> (Environment Research Consulting , 2017)

<sup>4</sup> (Prescali Environmental Consultants (Pty) Ltd, 2017).



## 7 APPENDICES

### A. Qualifications of Specialist

# Appendix A



ENVIRIDI  
ENVIRONMENTAL CONSULTANTS

**CURRICULUM VITAE:  
CORLIEN LAMBRECHTS**

# PERSONAL PROFILE

---

Corlien Lambrechts is a highly-experienced Environmental Specialist and Consultant with a demonstrated ability to handle multi-functional projects within the operational and corporate arena of Environmental Management across a range of industries. She has interests in Terrestrial Ecology and Water Resource Management; Experimental design and project implementation, Conservation Issues and the Biodiversity of South Africa.

She completed her (BSc) Environmental Management & Zoology through UNISA and completed practical Zoology courses at the North West University Potchefstroom Campus. She completed her final year Biodiversity Study at Vredefort Dome and a Project at the Roodeplaat Dam on Avifauna species, *Anhinga rufa* (African Darter). After working as a student at Geo Pollutions Technologies (Pty) Ltd and TUKS University Onderstepoort Campus, she started her career in Environmental Consulting at M2 Environmental Connections (MENCO) in 2013.

In 2015 she enrolled for her Honors degree in Zoology at the University of Pretoria where she completed a project in the Cathedral Peak Drakensberg Mountain range studying differences in community structures of invertebrate species between natural grasslands and grasslands subjected to rehabilitation by South African Environmental Observation Network (SAEON) and in association with the University of Pretoria Centre of Invasion Biology (CIB). She moved to the sister company (which is managed under the same Directors) of M2 Environmental Connections cc, namely Prescali Environmental Consultants (Pty) Ltd.

Since 2018, she has joined the team of Elemental-S on a permanent basis. She is the Director of her own smaller company, Enviridi Environmental Consultants (Pty) Ltd. She has since gained competency and accreditation through the Department of Water and Sanitation (DWS) for aquatic monitoring (SASS5 Accredited).

She is a Professional Natural Scientist with the South African Council of Natural Scientific Professions (Pr.Sci.Nat: 009135) and has been registered and accredited by Environmental Assessment Practitioners Association of South Africa (EAPASA), Registration number: 2020/935.

# CAPACITY

In her capacity as **SENIOR SPECIASLIST** at Elemental Sustainability (Pty) Ltd (Elemental-S) and throughout her career since 2013, she has been exposed and worked on numerous projects. As Senior Specialist the areas of responsibility at Elemental-S is set out strategically to cater for a wide range of operational and specialist requirements. The responsibilities are divided into two areas of responsibility, Environmental Management and Biodiversity.

In her capacity as **SENIOR SPECIASLIST / DIRECTOR** at Enviridi Environmental Consultants (Pty) Ltd (Pty) Ltd (Enviridi) and throughout her career since 2013, she has been exposed and worked on numerous projects.

# QUALIFICATIONS

<b>EDUCATION AND QUALIFICATIONS</b>	Degree BSc (Hons) Zoology - University of Pretoria; Degree BSc. Environmental Management & Zoological Sciences – 2012 - UNISA and NWU		
<b>CONTINUED PROFESSIONAL DEVELOPMENT</b>	<b>COURSE</b>	<b>INSTITUTION</b>	<b>COMPLETED</b>
	DWS SASS5 Accreditation	Ground Truth and DWS	2018
	Environmental Law Workshop, Environmental Law Update Workshop	IMBEWU Sustainability Legal Specialists	2016, 2019
<b>PROFESSIONAL STATUS</b> Registration Membership	<ul style="list-style-type: none"> <li>• South African Council of Natural Scientific Professions - Pr.Sci.Nat (Reference number: 009135)</li> <li>• Environmental Assessment Practitioners Association of South Africa EAPASA Registration number: 2020/935.</li> <li>• Southern African Society of Aquatic Scientists SASAQS Registration number: SASAQS0025</li> <li>• South African Bat Assessment Association Registration number: 0054</li> </ul>		

# PROFESSIONAL EXPERIENCE

<b>WORK HISTORY</b>	<b>ELEMENTAL SUSTAINABILITY (Pty) LTD / ENVIRIDI ENVIRONMENTAL CONSULTANTS (PTY) LTD</b>
<b>Employer</b>	(PTY) LTD
<b>Period</b>	October 2018 – Current
<b>Position</b>	<b>Senior Specialist/Consultant &amp; Director of Enviridi</b>
<b>Responsibilities</b>	Senior Specialist. Responsible for the management of all operations and projects. Senior specialist for Environmental authorisations projects (EIA, BAR, WULA, WML and AEL's), Audit

	(Environmental Authorisations), Compliance Monitoring and Specialist divisions (Bio monitoring, Wetlands and Biodiversity). Managing associate company.
<b>Employer</b> <b>Period</b> <b>Position</b> <b>Responsibilities</b>	<b>M2 ENVIRONMENTAL CONNECTIONS (PTY) LTD / PRESCALI ENVIRONMENTAL CONSULTANTS (PTY) LTD</b> October 2013– October 2018 <b>Environmental Consultant and Ecologist</b> Consultant and Specialist. Responsible for the completing and managing projects. Specialist for Environmental authorisations projects (EIA, BAR, WULA, WML and AEL's), Audit (Environmental Authorisations), Compliance Monitoring and Specialist divisions (Bio monitoring, Wetlands and Biodiversity). Ecologist.
<b>Employer</b> <b>Period</b> <b>Position</b> <b>Responsibilities</b>	<b>GEO POLLUTION TECHNOLOGIES (PTY) LTD</b> <b>ENVIRONMENTAL STUDENT WORK / FIELD TECHNICIAN</b> Student position Student work delegated by Environmental Consultants

## WORK EXPERIENCE

<b>WORK EXPERIENCE AND SKILLS</b>	<p>Development of audit protocol, conducting of audits. Environmental due diligences, WUL audits, EMPR PAR's and ROD audits. Specialist studies: Ecological and Aquatic Biomonitoring, EMP Performance Reviews. Compilation of Scoping EIA, EIA, BAR and Environmental Management Plans for mines, industrial developments and residential developments. Development of RSIP, IWWMP and Closure Plans. Application for Mining rights and prospecting rights. Development and implementation of various monitoring programs for water quality, air quality monitoring for mining and other industries.</p> <p>Other:</p> <ul style="list-style-type: none"> <li>• Desktop assessments of rivers (Present Ecological State, Ecological Importance &amp; Ecological Sensitivity);</li> <li>• Aquatic macroinvertebrate and fish community studies;</li> <li>• Risk assessment for proposed developments;</li> <li>• Recommending appropriate mitigations to reduce environmental impacts;</li> <li>• Conducting aquatic biomonitoring. This involves SASS5 protocol, fish community studies, diatom sampling and <i>In- / ex-situ</i> water quality interpretation;</li> <li>• Small mammal and herpetofauna field surveys including the use of various traps (camera, sherman and pitfall);</li> <li>• Good plant and bird identification skills;</li> <li>• Basic GIS mapping using QGIS GIS; and</li> <li>• Equipment maintenance and manufacture.</li> </ul> <p>Other:</p> <ul style="list-style-type: none"> <li>• NAUI – Scuba Diver</li> </ul>
-----------------------------------	--



<b>PROJECT EXPERIENCE</b>	High levels Authorisation projects. Baseline biodiversity studies (terrestrial & aquatic ecosystems); Impact Assessments (terrestrial & aquatic ecosystems); and Aquatic bio-monitoring.		
<b>Projects</b>			
<b>Institution Name</b>	<b>Description</b>	<b>Participation</b>	<b>Year Completed</b>
Elemental – S / Enviridi	Barplats: Crocodile River Mine Environmental Authorisation Amendments	EIA/EMPR Amendment Processes for 3 mines associated with Barplats	2019
	Rondevly EIA/EMPR Mining Right Application	EIA/EMPR Process	2019
	Gulf Oil South Africa – Fuels station Authorisations in KZN	Basic Assessment Process	2018/2019
	CIM International Sand Mining Permit and Sand Mining Prospecting Right	Basic Assessment Processes, WUL Application, IWWMP, Rehabilitation and Work Method Statements	2018/2019
	Monitoring for EastPlats – Eastern Limb	SASS5 Practitioner, Water Quality and Air Quality	2018/2019
	Monitoring for Barplats – Western Limb	SASS5 Practitioner, Water Quality and Air Quality	2018/2019
	Vaalbank Biomonitoring Monitoring	SASS5 Practitioner	2018/2019
	Ecological Assessments and Fauna Surveys	Desktop and Field Ecological Assessments: <ul style="list-style-type: none"> <li>• Nkanya Lodge</li> <li>• Kumbelo Mining</li> <li>• Estate D’Afrique Road Establishment</li> <li>• Smokey Hills Platinum Mine SASS</li> <li>• Windsor TSF Footprint expansion</li> </ul>	2018/2019
Prescali Environmental Consultants (Pty) Ltd	Black Chrome Mine EIA/EMPR and Servitude BAR to link to adjacent mining development	Monitoring Framework, Dust, Water	2018
	Black Chrome Mine EIA/EMPR and Servitude BAR to link to adjacent mining development	EIA/EMPR Authorisation Applications	2018
	Smokey Hills Platinum Mine Amendment	Amendment of EIA/EMPR to include connection to Black Chrome Infrastructure	2018
	Venetia Mine – Review of WUL	Update of IWWMP – 2018	2018
	Zwartkoppies Edenvale Townplanning development – 2018	Fieldwork and Ecological report	2018
	Glenover Phosphate	Ecological Assessment – 2018	2018

	Glenover Phosphate	EIA/EMPR Application for Environmental Authorisation	2018
	Grassvally WUL Audit – 2018	WUL Audit – Annually 2017/2018	2018
	Sylvania Lannex	Section 24G Application – 2018	2018
	Corobrik	Basic Assessment – 2018	2018
	Coastal Fuels	External Audit – 2017	2017
	Sefateng specialist investigation	(Ecology team) amendments for expansion – 2017	2017
	Moeijelijk specialist investigation	(Ecology team) amendments for expansion – 2017	2017
	Bauba Northern, Central and Southern Cluster	Ecology team – 2017	2017
	Black Chrome Pre-feasibility	Due Dilligence and Feasibility – 2017 - 2018	2017
	Matutu Clay Environmental	authorisation amendments - 2016	2016
	York, Kudumane Manganese	Closure – 2016 – Final Audit	2016
	Hakskeenpan	Ecology specialist investigation - 2016	2016
	Apollo Brick	External WUL Audit	2016
	Illitha Stellite	EMPR Amendment and IWWMP for WUL Amendment	2016
	Pan Palladium Iron Ore, PGE and Iron Smelter	Ecological Reports (Ironveld Holdings (Pty) Ltd) – 2015	2016
	Transalloys	Wetland assessment near Witbank for Savannah Environmental (Pty) Ltd) – 2015	2016
	Moeijelik	Fauna Ecological Report (2015)	2015
	Pan Palladium	EIA/EMPR Iron Ore and Pan Palladium EIA/EMPR PGE – 2015	2015
	Epibex	Prospecting BAR/EMP – 2015	2015
	Grasvally Project:	Sylvania Platinum EIA/EMPR – 2015	2015
M2 Environmental Consultants (Pty) Associate of Prescali	Aurora Power Solutions:	RSIP Assessment - April 2013)	2013/2014
	Department of Water Affairs: Integrated Water and Resource Management Plan	Harties: Kurper Oord - June 2013	2013/2014
	Destiny Springs Investment (Pty) Ltd:	Fauna & Flora Investigation - July 2013	2013/2014
	Prescali (Pty) Ltd – Harriets Wish	Aquatic & Wetland Assessment - August 2013	2013/2014
	Department of Public Works	Ekuseni Youth Centre: Wetland Rehabilitation and Management Report Compiled - September 2013	2013/2014
		NCOME and Management Report Compiled: Wetland Rehabilitation	2013/2014
	Samancor Chrome- Eastern Chrome	Rehabilitation Plan & Monitoring Programme - Lwala Section Riparian	2013/2014

## REFERENCES

CONTACT NAME	COMPANY	RELATIONSHIP	CONTACT NR
DuToit Wilken	Elemental-S	Employer / Partner	0845882322
Nicole Upton	Red Kite Environmental	Client / Contract Employer	0795552433
Dr Petro Erasmus	Prescali	Previous	0722377305
Ms Elaine van der Linde	Environment	Employer	On request



**UNISA**  
UNIVERSITY OF SOUTH AFRICA

*Handwritten notes:*  
2008/03/01  
10/01/09

*We certify that*

**Corlien Bekker**

*having complied with the requirements of the Higher Education Act  
and the Institutional Statute, was admitted to the degree of*

**BACHELOR OF SCIENCE**

*with specialisation in Environmental Management: Zoology Stream*

*at a congregation of the University*

*on 20 April 2009*



*Signature of Vice-Chancellor*

Vice-Chancellor



*Signature of Executive Dean*

Executive Dean

*Signature of University Registrar*

University Registrar





# University of Pretoria

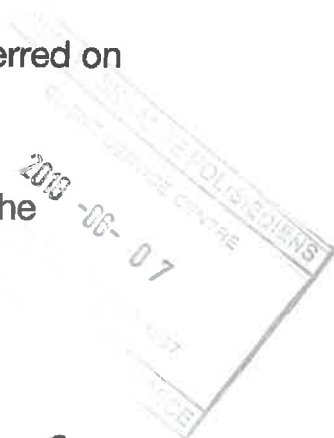
The Council and Senate hereby declare that  
at a congregation of the University the degree

## Bachelor of Science Honours in Zoology

with all the associated rights and privileges was conferred on

**Corlien Lambrechts**

in terms of the Higher Education Act, 1997 and the  
Statute of the University



On behalf of the Council and Senate

Vice-Chancellor and Principal

Registrar



00023382



2016-04-18

IMBEWU



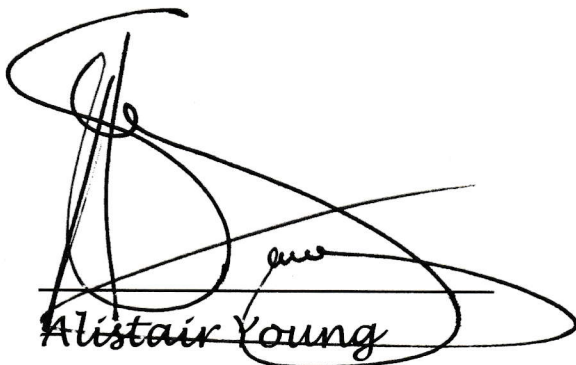
*Sustainability Legal Specialists (Pty) Ltd*

# CERTIFICATE

*This is to certify that*

*Corlien Lambrechts  
(Prescali Environmental Consultants (Pty) Ltd)*

*attended the "Financial Provision Regulations &  
Mine Closure Requirements Legal Training  
Workshop" at IMBEWU's Offices in Johannesburg on 7  
June 2016*



*Alistair Young  
Senior Sustainability  
Legal Consultant*



---

*Samantha de Villiers  
Sustainability Legal  
Consultant*





Water and Sanitation  
Environment Affairs



Water Research  
Commission

# CERTIFICATE OF ACCREDITATION

*This is to certify that*

*Corlien Lambrechts*

---

has met the requirements of the  
River Health Programme as a SASS5 Practitioner



COMPETENCY IN THE FOLLOWING AREAS HAVE BEEN DEMONSTRATED:

UNDERSTANDING OF THE SCOPE AND APPLICATION OF THE SASS5 METHOD.

DEMONSTRATION OF THE CORRECT SAMPLING PROTOCOLS

DEMONSTRATION OF THE CORRECT SAMPLE PREPARATION PROTOCOLS

IDENTIFICATION OF AQUATIC MACROINVERTEBRATES

COMPETENCY IS VALID FOR 3 YEARS FROM CERTIFICATE DATE

NATIONAL SASS5 AUDITOR

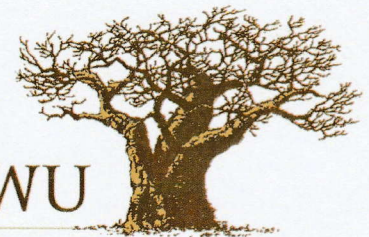
*28 September 2018*  
DATE



[www.imbewu.co.za](http://www.imbewu.co.za)

IMBEWU

Sustainability Legal Specialists (Pty) Ltd



## CERTIFICATE OF ATTENDANCE

*This is to certify that*

*Corlien Lambrechts  
Enviridi Environmental Consultants*

*attended the "Environmental Law Update Workshop" at  
IMBEWU's Offices in Johannesburg on 29 October 2019*

*The course consists of 1 SACNASP CPD Point  
(validation number: 2018-0021-000397)*

*Alistair Young  
Senior Sustainability  
Legal Consultant*

**SACNASP**  
South African Council for Natural Scientific Professions

*Accredited by the South  
African Council for Natural  
Scientific Professions*





**herewith certifies that**

**Corlien Lambrechts**

Registration Number: 009135

**is registered as a**

**Professional Natural Scientist**

in terms of section 20(3) of the Natural Scientific Professions Act, 2003  
(Act 27 of 2003)  
in the following field(s) of practice (Schedule 1 of the Act)

Environmental Science

Effective 25 January 2017

Expires 31 March 2020



A handwritten signature in black ink, appearing to read 'Botha', positioned above a horizontal line.

Chairperson

A handwritten signature in black ink, positioned above a horizontal line.

Chief Executive Officer





# *2020 Certificate of Membership*

This is to certify that

**Corlien Lambrechts**

---

is a member of the Southern African Society of Aquatic Scientists

**Membership No:** SASAQS0025

**Expiration Date:** 31/12/2020



A handwritten signature in black ink, appearing to read 'A. J. J. J.', is written over a horizontal line. The signature is fluid and cursive.

**SASAqS President**