

**BASIC ASSESSMENT PROCESS FOR THE PROPOSED
PROSPECTING IN SEA CONCESSION AREA 14A BY TRANS
ATLANTIC DIAMONDS (PTY) LTD**

Trans Atlantic Diamonds (Pty) Ltd
Office 1603 Portside
4 Bree Street
Cape Town, Western Cape, 8001



TRANS ATLANTIC
DIAMONDS

**Appendix 13:
Email Invitation: initial 30-day
consultation**

Anchor Environmental Consultants
8 Steenberg House, Silverwood Close, Tokai, South Africa
www.anchorenvironmental.co.za



Cheruscha Swart

From: Cheruscha Swart
Sent: Wednesday, 06 October 2021 13:08
To: Cheruscha Swart
Subject: Notice of acceptance of prospecting rights application
Attachments: Email Notice_Request for input and to register_6 Oct.pdf; BID - CS Oktober Afrikaans.pdf; BID - CS October English.pdf

Follow Up Flag: Follow up
Flag Status: Flagged

Dear Stakeholder,

NOTICE OF ACCEPTANCE OF PROSPECTING RIGHTS APPLICATION AND ACKNOWLEDGEMENT OF ENVIRONMENTAL AUTHORISATION APPLICATION IN TERMS OF THE NATIONAL ENVIRONMENTAL MANAGEMENT ACT (ACT NO. 107 OF 1998), ENVIRONMENTAL IMPACT ASSESSMENT REGULATIONS, 2014 (AS AMENDED): PROSPECTING ALONG THE WEST COAST OF SOUTH AFRICA IN SEA CONCESSION AREAS 14A & 11C.

You have been identified as a key stakeholder and are herewith invited to provide input on the proposed prospecting activities and associated Basic Assessment (BA) process.

Could you kindly submit any initial comments you might have regarding the prospecting rights application by filling out the questionnaire attached to the Background Information Document (BID) and submitting it to the following email address: cheruscha@anchorenvironmental.co.za by 15:00 on 7 October 2021 for concession 14A and 15:00 on 11 October for concession area 11C. Alternatively please contact us at (021) 701 3420. Further comments and or concerns regarding the proposed prospecting activities and BA process may still be submitted hereafter and during a 30-day public participation period, which includes a public stakeholder meeting, dates of which will be confirmed later.

Please note that we are compliant with the Protection of Personal Information (POPI) Act according to which personal information may not be distributed or made public without your permission or knowledge. We will, however, make all stakeholder comments available to the public, although these will be kept anonymous.

Please do not hesitate to contact us should you have any questions concerning the proposed project or stakeholder consultation process.

Thank you.

Kind regards,



Cheruscha Swart

Ecologist and Environmental Consultant

Anchor Environmental Consultants (Pty) Ltd

8 Steenberg House, Silverwood Close, Tokai, South Africa

Tel: +27 21 701 3420

Email: cheruscha@anchorencvironmental.co.za

Website: anchorencvironmental.co.za

Afrikaanse kennisgewing volg na die Engelse kennisgewing hieronder

Dear Stakeholder,

NOTICE OF ACKNOWLEDGEMENT OF APPLICATION FOR PROSPECTING RIGHTS AND ENVIRONMENTAL AUTHORISATION IN TERMS OF THE NATIONAL ENVIRONMENTAL MANAGEMENT ACT (ACT NO. 107 OF 1998), ENVIRONMENTAL IMPACT ASSESSMENT REGULATIONS, 2014 (AS AMENDED): PROSPECTING ALONG THE WEST COAST OF SOUTH AFRICA IN SEA CONCESSION AREAS 14A & 11C

APPLICATION PHASE: REQUEST FOR PRELIMINARY STAKEHOLDER INPUT AND STAKEHOLDER REGISTRATION

Trans Atlantic Diamonds Pty (Ltd) (the 'Applicant') is applying for the right to prospect in South African Sea Concession Areas 14A & 11C. Concession Area 14A spans 1240 ha and extends from the surf zone to 1 km offshore. It is located approximately 20 km North of Lamberts Bay (southern boundary), about 7 km south of Strandfontein (northern boundary) and adjacent to Doringbaai. Concession area 11C spans 164 023 ha with its inshore boundary located at approximately 5 km offshore up until the 200 m isobath. It is located about 43 km Northwest of Strandfontein from just South of Hoekbaai to just North of Baai Vals.

This activity triggers Listed Activities in the Environmental Impact Assessment Regulations, 2014 (as amended) and promulgated in terms of the National Environmental Management Act (Act No. 107 of 1998) (NEMA). The Applicant is therefore required to apply for Environmental Authorisation from the competent authority, i.e. the Department of Mineral Resources and Energy (DMRE), in addition to applying for prospecting rights to commence with the activity. The Applicant has appointed Anchor Environmental Consultants (Pty) Ltd as the independent Environmental Assessment Practitioner (EAP) to assist with applying for prospecting rights and conducting a Basic Assessment Process which is required to apply for Environmental Authorisation.

You are herewith invited to provide input and to register as an Interested and Affected party (I&AP) for the proposed activity.

Please send your name, contact details, preferred method of notification (e.g. e-mail address, cellphone or verbal communication) and an indication of any direct business, financial, personal or other interest (e.g. fisheries, business owner, government official) which you may have in the application to cheruscha@anchorenvironmental.co.za. Alternatively, please complete and submit the questionnaire attached to the Background Information Document (BID). If you are aware of anyone that might be an I&AP, please direct them to this email or send us their details.

Please note that this first notification is to inform stakeholders that the application for prospecting rights has been accepted and the application for Environmental Authorisation has been acknowledged by the DMRE.

Prospecting rights and environmental authorisation have NOT yet been granted. We are calling for any initial comment regarding the acceptance and acknowledgement of these applications. **Kindly submit any initial comments you might have regarding the prospecting rights application by filling out the questionnaire attached to the BID and submitting it to the following email address: cheruscha@anchorenvironmental.co.za by 15:00 on 7 October 2021 for concession 14A and 15:00 on 11 October for concession area 11C.**

You are also notified that there will be an official 30-day Public Participation Process which will commence anytime from late October to mid-November. This process will also include a meeting. Details regarding this process and meeting will be confirmed with and communicated to stakeholders at a later stage.

During this 30-day period, you will have an opportunity to review and comment on the Draft Basic Assessment Report (BAR) which will be made available online and at designated locations. The Draft BAR will provide details about the applicant, receiving environment, the prospecting activity and any potential associated impacts. Any further comments/ concerns regarding the prospecting rights project and activities can still be submitted until the end of the Public Participation Period (date still to be confirmed).

Please do not hesitate to contact us should you have any questions concerning the proposed project or stakeholder consultation process.

Thank you

Kind regards,



Cheruscha Swart
Ecologist and Environmental Consultant
Anchor Environmental Consultants (Pty) Ltd
8 Steenberg House, Silverwood Close, Tokai, South Africa
Tel: +27 21 701 3420
Email: cheruscha@anchorenvironmental.co.za
Website: anchorenvironmental.co.za

We are compliant with the Protection of Personal Information (POPI) Act according to which your personal information may not be distributed or made public without your permission or knowledge. We will, however, make all stakeholder comments available to the public, although these will be kept anonymous.

Please note that only registered stakeholders will receive further correspondence. Despite precautionary measures that we have taken, our notifications could be categorised as spam by a number of email service providers. Should you wish to register, please add the following email addresses to your contacts to ensure that you receive future updates on this project: cheruscha@anchorenvironmental.co.za

Afrikaanse Kennisgewing

Geagte Belanghebbende,

KENNISGEWING VIR DIE ERKENNING VAN AANSOEK OM PROSPEKTEERREGTE EN OMGEWINGSMAGTIGING IN TERME VAN DIE WET OP NASIONALE OMGEWINGSBESTUUR (WET NR. 107 VAN 1998), OMGEWINGS-IMPAKASSESSERINGSREGULASIES, 2014 (SOOS GEWYSIG): PROSPEKTEERWERK IN SEEKONSESSIEGEBIED 14(A) EN 11(C) LANGS DIE WESKUS VAN SUID-AFRIKA.

TOEPASSINGSFASE: REGISTRASIE VAN GEÏNTERESSEERDE EN/OF GEAFFEKTEERDE PARTYE.

Trans Atlantic Diamonds Pty (Ltd) ('Aansoeker') doen aansoek vir die reg om te prospekter vir twee seekonsessiegebiede, 14A en 11C. Seekonsessiegebied 14A and 11C is in die see langs die Weskus geleë en is 1 240 ha en 16 4023 ha groot, onderskeidelik. Seekonsessiegebied 14A strek vanaf 6.88 km Suid van Strandfontein en tot 20 km Noord van Lambertsbaai (reg lanks aan Doringbaai). Die seekonsessiegebied (14A) strek van die brandersone tot 1 km. Die see-konsessiegebied 11C strek omtrent 43 km Noordwes van Strandfontein (net suid van Hoekbaai) tot net noord van Baai Vals. Die seekonsessiegebied (11C) se grens begin ongeveer 5 km van die kus, en die buitegrens strek tot by die 200 m badmetrie lyn.

Hierdie aktiwiteit gee aanleiding tot ander aktiwiteite, soos gelys onder die Omgewings-impakassesseringsregulasies, 2014 (soos gewysig) en afgekondig in terme van die Nasionale Wet op Omgewingsbestuur (Wet No. 107 van 1998). Daar word dus van die aansoeker vereis om aansoek te doen om omgewingsmagtiging by die bevoegde owerheid, dit wil sê die Department van Minerale Hulpbronne en Energie (DMHE), benewens die aansoek om prospekterregte, voordat daar voortgegaan mag word met die aktiwiteite. Die aansoeker het Anchor Environmental Consultants (Edms) Bpk aangestel as die Onafhanklike Omgewingsassesseringspraktisyn (EAP) om te help met die aansoek om prospekterregte en om 'n Basiese Assesseringsproses uit te voer as deel van die aansoek om omgewingsmagtiging.

U word hiermee uitgenooi om te registreer as 'n geïnteresseerde en/of geaffekteerde party (I&AP) vir die voorgestelde aktiwiteit.

Stuur asseblief u naam, kontakbesonderhede, en voorkeurmetode vir kennisgewing (bv. e-posadres, selfoon of mondelingse kommunikasie) en 'n aanduiding van enige direkte sake-, finansiële, persoonlike of ander belangstellings (bv. Visserye, sake-eienaar, regeringsamptenaar) wat u in die aansoek mag hê na cheruscha@anchorenvironmental.co.za. U kan ook die vraelys wat by die agtergrondinligtingsdokument (AID) aangeheg is, invul en indien. As u van iemand weet wat moontlik ook 'n I&AP is, verwys hulle asseblief na hierdie e-pos of stuur vir ons hulle besonderhede.

Let daarop dat hierdie eerste kennisgewing bedoel is om belanghebbendes in kennis te stel dat die aansoek om prospekteregte aanvaar is en dat die aansoek om omgewingsmagtiging deur die DMHE erken is. Prospekteregte en omgewingsmagtiging is nog NIE toegeken NIE. U word uitgenooi om aanvanklike kommentaar te lewer aangaande die aanvaarding en erkenning van aansoeke. **Dien asseblief enige aanvanklike kommentaar oor die aansoek om prospekteregte in deur die vraelys (aangeheg by die AID), in te vul en dit voor 7 Oktober 2021 om 15:00 vir konsessie 14A en voor 11 Oktober 2021 vir konsessie 11C na cheruscha@anchorenvironmental.co.za te stuur.**

U word ook in kennis gestel dat daar 'n amptelike 30-dae openbare deelnameproses sal wees wat enige tyd vanaf einde Oktober tot middle November 2021 'n aanvang sal neem. Die proses sal ook 'n openbare vergadering insluit. Inligting rakende die proses en vergadering sal mettertyd bevestig en aan belanghebbendes gekommunikeer word.

Gedurende hierdie 30-dae periode het u die geleentheid om die Konsep-basiese assesseringsverslag (BAV) te hersien en kommentaar daarop te lewer. Hierdie verslag sal op ons webtuiste aanlyn en ook op aangewese plekke beskikbaar gestel word. Die Konsep-BAV sal besonderhede verskaf oor die aansoeker, die geaffekteerde omgewing, die prospekteraktiwiteit en enige potensiële gevolge. U kan registreer en kommentaar lewer vanaf vandag, 4 Oktober 2021 tot en met wanneer die openbare deelnameproses eindig. Besonderhede oor die openbare deelnameproses sal bevestig word.

Moet asseblief nie huiwer om met ons in verbinding te tree indien u enige vrae oor die voorgestelde projek of die openbare deelname proses het nie.

Dankie.

Vriendelike groete,



Cheruscha Swart
Ecologist and Environmental Consultant
Anchor Environmental Consultants (Pty) Ltd
8 Steenberg House, Silverwood Close, Tokai, South Africa
Tel: +27 21 701 3420
Email: cheruscha@anchorenvironmental.co.za
Website: anchorenvironmental.co.za

Let asseblief daarop dat ons voldoen aan die Wet op die Beskerming van Persoonlike Inligting (POPI), ingevolge waarvan u persoonlike inligting nie sonder u toestemming of kennis versprei of openbaar gemaak mag word nie. Ons sal egter alle kommentaar van belanghebbendes aan die publiek beskikbaar stel, alhoewel dit anoniem sal bly.

Let daarop dat slegs geregisteerde belanghebbendes verdere korrespondensie sal ontvang. Ten spyte van voorsorgmaatreëls is daar verskeie e-posdiensverskaffers wat dalk u e-poskennisgewings as strooi-pos klassifiseer. Indien u wil registreer, voeg die volgende e-posadres by u kontakte om te verseker dat u toekomstige opdaterings oor hierdie projek kan ontvang: cheruscha@anchorenvironmental.co.za

AANSOEKER: Trans Atlantic Diamonds (Edms) Bpk

AANSOEK OM PROSPEKTEERREGTE EN OMGEWINGSMAGTIGING LANGS DIE WESKUS IN KONSESSIEGEBIED 14A EN 11C

Oktober 2021

PROJEK AGTERGROND

Trans Atlantic Diamonds (Edms) Bpk (TAD) het aansoek gedoen vir die prospekterreg om diamant- en edelsteenafsettings, benewens ander swaar minerale, industriële minerale, edelmetale en yster- en onedelmetale wat binne die toepassingsgebied kan bestaan, in verband met die Wet op Ontwikkeling van Minerale en Petroleumhulpbronne (Wet 28 van 2002), soos gewysig) (MPRDA) binne die Seekonsessiegebied 14A en 11C. Aangesien die prospektering 'n genoteerde aktiwiteit is, in term van die Omgewingsimpak-assesseringsregulasies, 2014 (gewysig en afgekondig ingevolge die Nasionale Wet op Omgewingsbestuur (Wet No. 107 van 1998)) is, moet TAD ook aansoek doen om omgewingsmagtiging (OM) by die bevoegde owerheid, d.w.s. die Departement van Minerale Hulpbronne en Energie (DMHE). Om aansoek te doen vir OM, moet 'n Basiese Assesseringsproses van die voorgestelde aktiwiteit asook die potensiële impak daarvan, tesame met 'n Openbare Deelnameproses, gedoen word en die bevindinge as 'n verslag aan die DMHE voorgelê word. Die Aansoeker het Anchor Environmental Consultants (Edms) Bpk aangestel as die Onafhanklike Omgewings-assesseringspraktisyn (EAP) om te help met die aansoek om prospekterregte en omgewingsmagtiging.

PROJEK LIGGING

Seekonsessiegebied 14A and 11C is in die see langs die Weskus geleë en is 1 240 ha en 16 4023 ha groot, onderskeidelik. Seekonsessiegebied 14A strek vanaf 6.88 km Suid van Strandfontein en tot 20 km Noord van Lamberts Baai (lanks aan Doringbaai) (Figuur 2). Die area strek van die brandersone tot 1 km. Die seekonsessiegebied 11C strek omtrent 43 km Noordwes van Strandfontein (net suid van Hoekbaai tot noord van Baai Vals.) (Figuur 2). Die seekonsessiegebied se grens begin ongeveer 5 km van die kus, en die buitengrens strek tot by die 200 m badmetrie lyn.

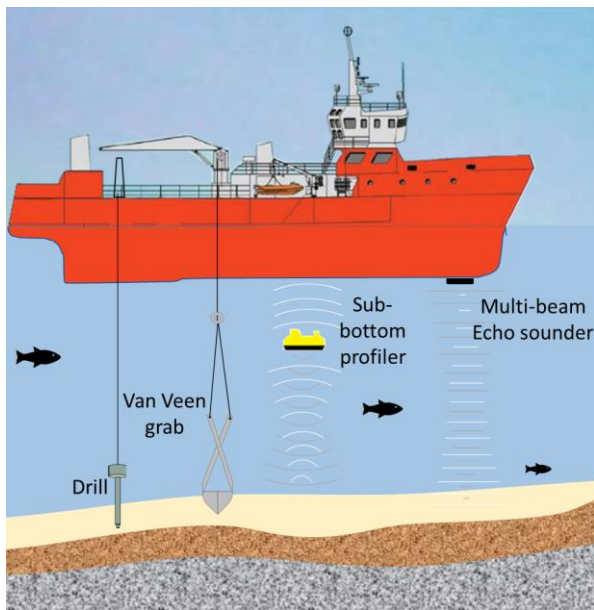
PROSPEKTERINGSMETODE

Geofisiese Opname: 'n Hoë-frekwensie Multibeam Echo Sounder en middel-frekwensie "sub-bottom profiler" sal gebruik word om 'n beeld van die seevloer en sedimentlae (grondlae) te skep en spesifieke rotstipes van belang (geologiese eenhede) te identifiseer. Resultate sal gebruik word om die toepaslike boormetode, boorgebiede en die ontwerp van die mynbouvaartuig in te lig (Figuur 1)

Boor: Seavloermonsters sal versamel word met behulp van 'n Vibracore, Gravity Core of Sonic Core en sal inligting verskaf oor die struktuur van die seevloer, sedimentlae en geologiese eenhede. Resultate van hierdie

opname sal gebruik word om die ontwerp van die mynbouvaartuig in te lig.

Van Veen Grab (grypmoesters): Die instrument versamel oppervlakige grondmonsters wat ontleed word om grondvloer makrofauna (klein seediertjies soos wurms, mossels en krappies) te identifiseer en geologiese eenhede van die seevloer te bepaal. Resultate sal gebruik word om die makrofaunale gemeenskappe in die gebied tydens en na prospektering en mynbou te beskryf en te monitor.



Figuur 1: Verskeie monsternemingmetodes wat gebruik sal word, d.w.s. Multibeam Echo Sounder, sub-bottom profilers en 'n Van Veen grab. Gewysig van <http://www.imdhgroup.com/dp-star.php> en <https://earthresources.vic.gov.au/>.

POTENSIËLE IMPAKTE

Belangrikheid van die impak word in hakies aangedui

Sosio-ekonomies: Mynbou kan breëskaal se werksgeleenthede skep en Suid-Afrika se ekonomie 'n hupstoot gee. Aangesien die gebied in die see langs die Weskus ryk aan diamantneerslae is, word mynbou in hierdie streek belangrik geag i.t.v. die land se sosio-ekonomie. Verder dra mynbou by om die doelwitte van Suid-Afrika se Nasionale Ontwikkelingsplan en Operasie Phakisa te

bereik, d.w.s. om die ekonomie te help groei en 'n hupstoot te gee en om armoede en ongelikheid te verminder.

Mariene Ekologie en visserye:

- Seevloermonsters en grondafval (Baie laag)
- Fyn sediment stofwolke (Onbeduidend)
- Seismiese versteuring vir ongewerweldes (Onbeduidend)
- Seismiese versteuring vir vis en seeskilpaaie (Baie laag)
- Seismiese versteuring vir mariene soogdiere en seevoëls (Laag)
- Impak op visserye (Laag)
- Vrystelling van afval tydens skipbedrywighede (Baie laag)

Erfenis:

- Impak van boor- en grypmonsterneming op onderwater prehistoriese hulpbronne (Baie laag)
- Impak van boor- en grypmonsterneming op onderwater paleontologiese hulpbronne (Baie laag)

“No-go” Opsie:

Positiewe impak van hierdie opsie

- Geen effekte op die bio- en geofisiese omgewing

Negatiewe impak van hierdie opsie

- Verlies aan geleentheid om vas te stel of 'n diamanthulpbron in die konsessiegebied voorkom of nie (Laag)
- Voorkoming van sosio-ekonomiese voordele a.g.v. die voortgaan van prospekteringsaktiwiteite (Laag)
- Verlore ekonomiese geleenthede (Laag)

AANSOEKPROSES EN TYDLYN

Fase 1: Indiening van aansoek

'n Prospekterreg- en omgewingsmagtigingsaansoek is by die DMHE ingedien en op 7 September 2021 en 10 September 2021,

onderskeidelik vir Seekonsessiegebied 14A en 11C aanvaar.

Fase 2: Eerste kommentaar tydperk/kennisgewing tydperk

'n Agtergrondinligtings dokument en vraelys word tydens hierdie fase gesirkuleer. Belanghebbende en Geaffekteerde Partye (B&GPe) word uitgenooi om te registreer en kommentaar te lewer op die aanvaarding van die prospekterregte aansoek.

Fase 3: Openbare vergadering

'n Openbare vergadering sal in Doringbaai geskeduleer word in laat Oktober en vroeë November 2021 (datum moet nog bevestig word). Tydens hierdie vergadering sal lede van Anchor (die EAP) en Trans Atlantic Diamonds (die aansoeker) meer besonderhede oor die voorgestelde prospekteraktiwiteit verskaf en B&GPe raadpleeg. B&GPe sal dan ook die geleentheid hê om vrae te vra en kommentaar oor die aktiwiteit te lewer.

Fase 4: Sirkuleer Konsep BAV & Tweede kommentaartydperk

'n Konsep Basiese-assesseringsverslag (BAV) word voorberei en sal 'n gedetailleerde beskrywing van die voorgestelde projek, potensiële impakte en spesialisbevindinge insluit. Hierdie verslag sal aan die publiek gesirkuleer word vir 'n 30-dag kommentaartydperk tydens die Openbare Deelnameproses.

Fase 5: Dien finale BAV by die DMHE in

Belanghebbendes se kommentaar sal aangespreek in die belanghebbendekonsultasieverslag, wat deel vorm van die finale BAV, opgeteken word. Die finale BAV sal dan by die DMHE ingehandig word vir hersiening.

Fase 6: Besluit deur die DMHE

Die DMHE het 107 dae om al die dokumente na te sien en te besluit of Omgewingsmagtiging vir prospektering in konsessiegebied 14(A) en 11(C) toegestaan moet word of nie.

Tabel 2 Hooffases van hierdie Basiese Assesseringsproses en voorlopige datums vir elkeen.

Fases	Voorgestelde datums
1. Dien aansoek in	3 September 2021
2. Eerste kennisgewing/kommentaartydperk	7 September – 7/11 Oktober
3. Openbare vergadering	Moet nog bevestig word
4. Sirkuleer Konsep BAV	Moet nog bevestig word
5. Dien finale BAV in	6 Desember 2021
6. Besluit deur die DMHE	26 April 2022

HOE OM DEEL TE NEEM

B&APe word uitgenooi om te registreer en aanvanklike kommentaar te lewer op die **erkenning van die prospekteringsregte-aansoek** tydens die eerste kommentaar tydperk voor Donderdag 7 Oktober 2021 om 15:00 vir konsessie 14A en Maandag 11 Oktober om 15:00 konsessie 11C. Registreer en verskaf asseblief u kommentaar deur die vraelys hieronder te voltooi en te e-pos of pos aan die kontakpersoon soos hieronder aangedui. Alternatiewelik, skakel asseblief die nommer hieronder om te registreer en kommentaar te lewer. Die geleentheid om kommentaar te lewer op die basiese-assesseringsverslag (BAV) en prospekteringsaktiwiteite kan nog tot die einde van die tweede kommentaar periode gedoen word, dit wil sê die openbare deelnameproses tydperk (datum moet nog bevestig word).

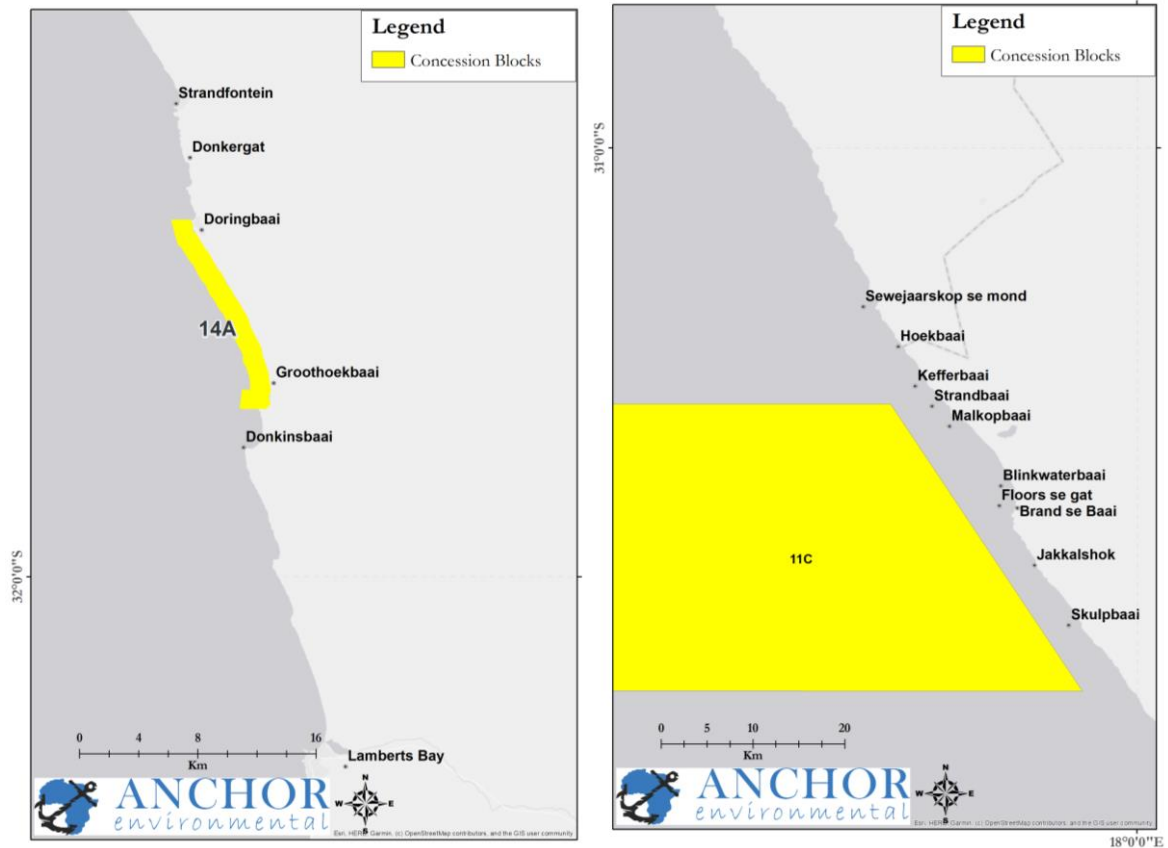
U word ook uitgenooi om die openbare vergadering by te woon:

Datum: Moet nog bevestig word.

Plek: Moet nog bevestig word.

Tyd: Moet nog bevestig word.

PROJEK LIGGINGSKAART



(a)

(b)

Figuur 2: Seekonsessiegebied 14A (A)(a, links) en 11(C)(b, regs) langs die Kaapse Weskus.

KONTAK BESONDERHEDE

Indien u enige vrae het, moet asseblief nie huiwer om ons te kontak nie.

Cheruscha Swart

Ekoloog in Omgewingskonsultant

Anchor Environmental Consultants (Pty) Ltd

Skakel: +27 21 701 3420

Posadres: Suite 8 Steenberg Huis, Steenberg Kantoor park,
Silverwood Close, Tokai, 7945

E-pos: cheruscha@anchorenvironmental.co.za

Webwerf: anchorenvironmental.co.za

OPENBARE DEELNAME VRAELYS:

PROSPEKTERING REG LANGS DIE WESKUS IN KONSESSIEGEBIED 14A en 11C

Om as 'n B&GP te registreer en kommentaar op die voorgestelde projek te lewer, voltooi asseblief hierdie vraelys en stuur per e-pos of pos aan Anchor Environmental Consultants

cheruscha@anchorenvironmental.co.za

Suite 8 Steenberg House, Steenberg Offic Park, Silverwood Close, Tokai, 7945

Alternatiewelik, skakel asseblief die nommer hieronder om kommentaar te lewer:

Skakel: +27 21 701 3420

Naam en Van:						
Telefoon Nr.:		Faks Nr.:				
Posadres:						
E-pos:						
Voorkeur metode van kontak (merk die boks):	<input type="checkbox"/>	E-pos	<input type="checkbox"/>	Telefoon	<input type="checkbox"/>	Faks
	<input type="checkbox"/>	Pos	<input type="checkbox"/>	Sms	<input type="checkbox"/>	Whatsapp

Let wel: Ons voldoen aan die Wet op die Beskerming van Persoonlike Inligting (POPI) (sien aangehegte brief). U persoonlike inligting sal slegs vir die doeleindes van hierdie projek gebruik word en sal nie sonder u toestemming of kennis aan derde partye buite hierdie projek gedeel word of openbaar gemaak word nie. Ons sal egter alle belanghebbendes se kommentaar aan die publiek beskikbaar stel, hoewel dit anoniem gehou sal word. Teken asseblief hieronder om aan te dui dat u bewus is hiervan en hierdie bepalings aanvaar.

Met watter dorp/ dorpe is u geaffilieer of in watter dorp is u woonagtig?

Wat is jou affiliasie (bv. privaatburger, regeringsinstelling, kommersiële visserye, kleinskaalse visserye, bewaringsorganisasie, visseryfonds/ trust, gemeenskapsforum, ens.)

Naam van instelling / maatskappy / departement waarmee u geaffilieer is (indien van toepassing).

Regeringsdepartemente, spesifiseer asseblief ook jou direktoraat en subdirektoraat. Ignoreer asseblief hierdie vraag as jy 'n privaatburger of kleinskaalse visserman is met geen amptelike maatskappy nie

Jou rol in hierdie instelling (bv. visserman, burger, lid, Voorsitter, Direkteur, gemeenskapsverteenwoordiger)

Is jy of die gemeenskap wat jy verteenwoordig 'n gebruiker van hierdie gebied? Indien wel, beskryf asseblief hoe jy die area gebruik.

--

As jy dink jy of die gemeenskap wat jou verteenwoordig kan geraak word deur hierdie projek, verduidelik asseblief hoe of hoekom jy dink dit kan gebeur?

--

Vir diegene wat betrokke is by visvang, dui asseblief aan watter sektor jy aan behoort (bv. rotskreef, tradisionele lynvis, klein pelagics) en of jy 'n ontspannings- / kleinskaalse kommersiële -/ bestaans- of kommersiële visser is.

--

Beskryf asseblief die ligging en gee besonderhede oor jou hoof visvanggronde.

(bv. hoe ver vang jy vis van die kuslyn af? Vis jy op rotsagtige rif of sanderige gebiede of albei? Jy kan ook 'n kaart heg of invoeg).

--

In watter maande vang jy vis en watter tye van die dag (dui asseblief aan of hierdie verskil vir verskillende spesies)

--

Is daar enige gebiede wat jy aanbeveel spesifiek vermy moet word tydens prospektering?

(bv., hoëprofielrifgebiede of visvanggronde?). Verskaf asseblief besonderhede.

--

Is jy bewus van enige sensitiewe gebiede wat vermy moet word? (dit wil sê erfenisterreine, spesiale omgewingskenmerke of gebiede ens?). Verskaf asseblief besonderhede.

Is jy bewus van enige ander impakte wat hierdie projek op die gemeenskap of omgewing kan hê? Verskaf asseblief besonderhede.

Is daar enige versagtingsmaatreëls (beskermingsmaatreëls) wat jy wil voorstel?

Weet jy van enige ander persone, organisasies of partye wat in kennis gestel moet word?
Verskaf asseblief kontakbesonderhede.

As u enige addisionele kommentaar, vrae of bekommernisse het, brei asseblief uit.

APPLICANT: Trans Atlantic Diamonds (Pty) Ltd

APPLICATION FOR A PROSPECTING RIGHT AND ENVIRONMENTAL AUTHORISATION ALONG THE WEST COAST IN CONCESSION AREA 14A and 11C

OCTOBER 2021

PROJECT BACKGROUND

Trans Atlantic Diamonds (Pty) Ltd (TAD) has applied for a right to prospect for diamondiferous and gemstone deposits in addition to other heavy minerals, industrial minerals, precious metals and ferrous and base metals that may exist within the application areas, in terms of the Mineral and Petroleum Resources Development Act (Act 28 of 2002), as amended) (MPRDA) within Sea Concession Area 14(A) and 11(C). As prospecting is a Listed Activity under the Environmental Impact Assessment Regulations, 2014 (amended and promulgated in terms of the National Environmental Management Act (Act No. 107 of 1998)), TAD is also required to apply for Environmental Authorisation (EA) from the competent authority, i.e., the Department of Mineral Resources and Energy (DMRE). To apply for EA, a Basic Assessment of the proposed activity and its potential impacts, along with a Public Participation Process, must be conducted and the findings submitted as a report to the DMRE. The Applicant has appointed Anchor Environmental Consultants (Pty) Ltd (Anchor) as the independent Environmental Assessment Practitioner to assist with applying for prospecting rights and Environmental Authorisation.

PROJECT LOCATION

Sea Concession area 14A and 11C are located offshore on the West Coast and is 1 240 ha and 16 4023 ha in extent, respectively. Sea Concession area 14A extends from about 6.88 km south of Strandfontein and 20 km north of Lamberts Bay (adjacent to Doringbaai) (Figure 2). The concession area extends from the surfzone to 1 km offshore. Sea Concession area 11C extends from about 43 km Northwest of Strandfontein (from just south of Hoekbaai to just North of Baai Vals.) (Figure 2). The inshore boundary is situated about 5 km from the coast, and the outer boundary extend to the 200m isobath.

PROSPECTING METHOD

Geophysical Survey: A high frequency Multibeam Echo Sounder and mid-frequency sub-bottom profiler will be used to create a model of the seafloor and layers of sediment and identify specific rock types of interest (geological units). Results from this survey will be used to inform the appropriate drilling method, drill sites and the design of the mining vessel (Figure 1).

Drilling: Seabed samples will be collected using a Vibracore, Gravity Core or Sonic Core and will provide information on the structure of the seafloor, sediment layers and geological units. Results from this survey will

be used to inform the engineering of the mining vessel.

Van Veen Grab sampling: The grab collects surficial sediment samples that are analysed to identify benthic macrofauna (small animals such as worms, mussels, and crustaceans) to determine geological units of the seafloor. Results from this survey will be used to describe and monitor the baseline macrofaunal communities in the area during and after prospecting and mining.

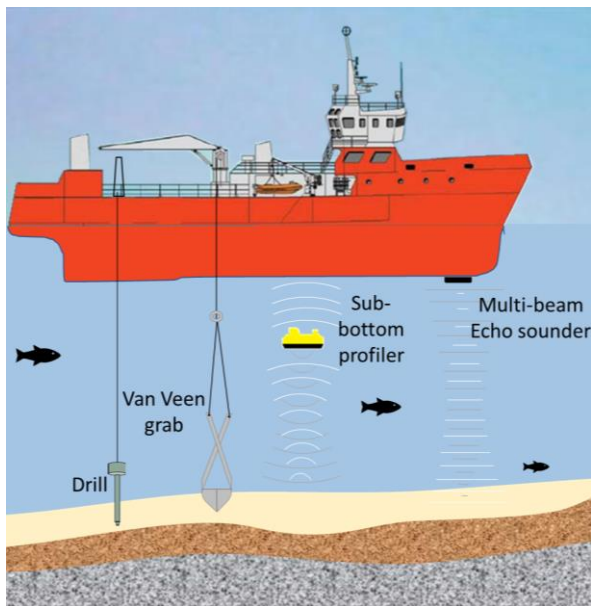


Figure 1: Various sampling methods that will be used i.e., Multibeam Echo Sounder and sub-bottom profilers, drills and a Van Veen grab. Modified from <http://www.imdhgroup.com/dp-star.php> and <https://earthresources.vic.gov.au/>.

POTENTIAL IMPACTS

Significance of impacts are indicated in parentheses

Socio-economic: Mining can create broad scale employment opportunities and boost South Africa's economy. As the area offshore of the West Coast is rich in diamond deposits, mining in this region is deemed socio-economically important. Furthermore, mining contributes towards achieving the goals of South Africa's National Development

Plan and Operation Phakisa i.e., to facilitate and boost the growth of the economy and alleviate poverty and inequality.

Marine Ecology and fisheries:

- Seabed sampling and tailings disposal (Very Low)
- Fine sediment plumes (Insignificant)
- Seismic disturbance to invertebrates (Insignificant)
- Seismic disturbance to fish and turtles (Very Low)
- Seismic disturbance to marine mammals and seabirds (Low)
- Impact on fisheries (Low)
- Waste discharges during vessel operations (Very Low)

Heritage:

- Impacts of core and grab sampling on submerged prehistoric resources (Very Low)
- Impacts of core and grab sampling on submerged palaeontological resources (Very Low)

No-go Option:

Positive impacts of this option

- No effects to the bio- and geophysical environment

Negative impact of this option

- Loss of opportunity to establish whether or not a viable offshore diamond resource exists in the concession area (Low)
- Prevention of any socio-economic benefits associated with the continuation of prospecting activities (Low)
- Lost economic opportunities (Low)

APPLICATION PROCESS AND TIMELINE

Phase 1: Lodge Application

A prospecting rights and environmental authorisation application have been lodged

with the DMRE and was accepted on 7 September 2021 and 10 September 2021 for concession area 14(A) and 11(C), respectively.

Phase 2: First notification/commenting period

A background information document and questionnaire are circulated during this phase. Interested and Affected Parties (I&APs) are invited to register and provide comment on the acceptance of the prospecting rights application.

Phase 3: Public meeting

A Public meeting will be scheduled in Doringbaai for late October, early November 2021 (exact date to be confirmed). During this meeting, members of Anchor (the EAP) and Trans Atlantic Diamonds (the applicant) will provide more detail on the proposed prospecting activity and consult with I&APs. I&APs will then also have the opportunity to ask questions and provide comment on the activity.

Phase 4: Circulate Draft BAR & Second commenting period

A Draft Basic Assessment Report (BAR) is being prepared and will include a detailed description of the proposed project, potential impacts and specialist findings. This report will be circulated to the public for a 30-day commenting period during the Public Participation Process.

Phase 5: Submit Final BAR to the DMRE

Stakeholder comments will be addressed and incorporated into the stakeholder consultation report which forms part of the final BAR. The final BAR will then be submitted to the DMRE for review.

Phase 6: Decision by the DMRE

The DMRE has 107 days to review all the documents and decide whether or not to grant Environmental Authorisation for prospecting in Concession area 14(A) and 11(C).

Table 2 Main phases of this Basic Assessment Process and provisional dates for each.

Phases	Proposed dates
1. Lodge application	3 September 2021
2. First notification/commenting period	7th September – 7/ 11 October 2021
3. Stakeholder meeting	tbc
4. Circulate Draft BAR	tbc
5. Submit Final BAR	6 December 2021
6. Decision by the DMRE	26 April 2022

HOW TO PARTICIPATE

I&APs are invited to register and provide initial comments on the **acknowledgement of the prospecting rights application** during this first commenting period before Thursday 7 October 2021 at 15:00 for concession area 14A and before Monday 11 October 2021 at 15:00 for concession 11C. Please register and provide your comment by completing the questionnaire below and sending it via email or post to the contact person indicated below. Alternatively, please **phone** the number below to register and provide comment. Opportunity to comment on the basic assessment process and prospecting activities can still be provided until the end of the second commenting period, i.e. public participation period (date to be confirmed).

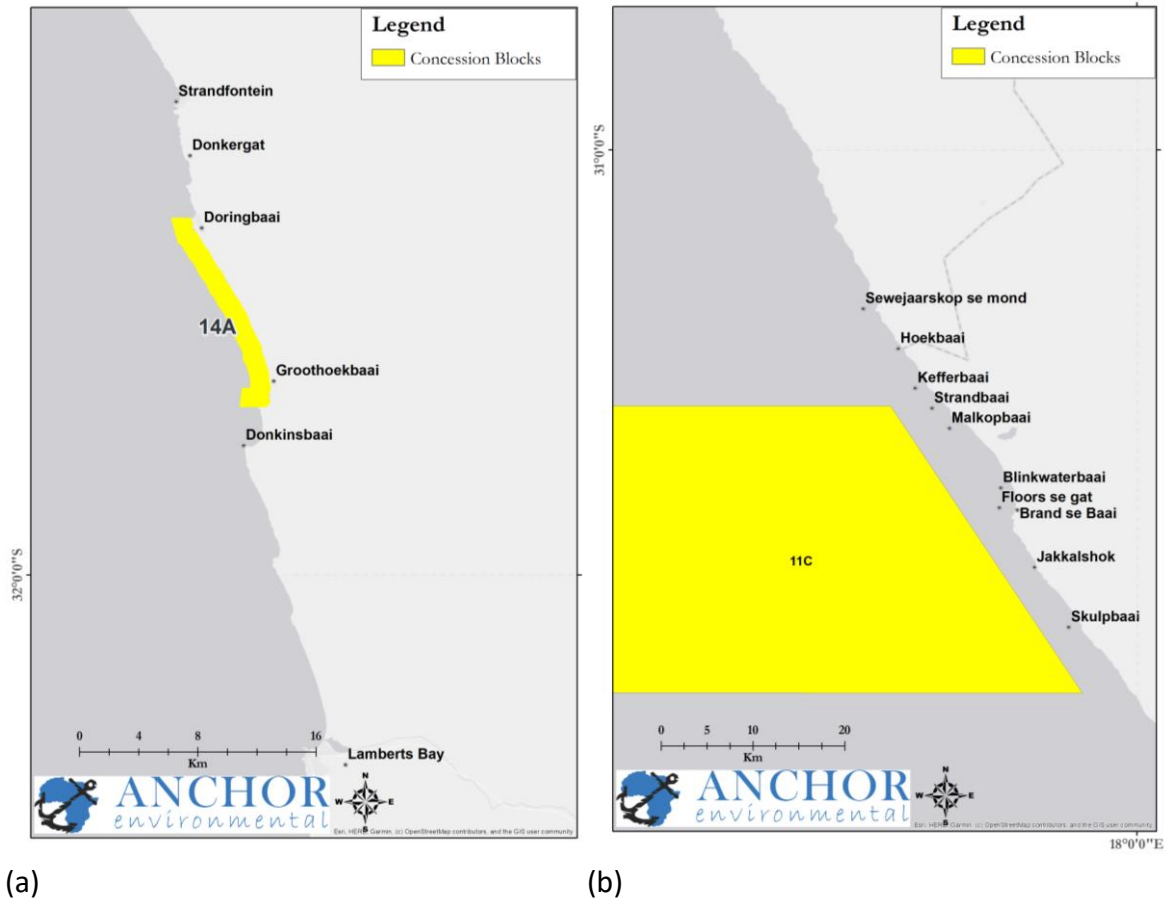
You are also invited to attend the public meeting:

Date: TBC

Venue: TBC

Time: TBC

PROJECT LOCALITY MAP



(a)

(b)

Figure 2: Sea concession 14A (a, left) and 11C (b, right) off the Western Cape Coast.

CONTACT DETAILS

Should you have any questions, please do not hesitate to contact us.

Cheruscha Swart
Ecologist and Environmental Consultant
Anchor Environmental Consultants (Pty) Ltd
Tel: +27 21 701 3420
Postal Address: Suite 8 Steenberg House, Steenberg Office
Park, Silverwood Close, Tokai, 7945
Email: cheruscha@anchorenviroental.co.za
Website: anchorenviroental.co.za

PUBLIC PARTICIPATION QUESTIONNAIRE:

PROSPECTING RIGHT ALONG THE WEST COAST IN CONCESSION AREA 14 A and 11C

To register as an I&AP and provide comment on the proposed project, please complete and return this questionnaire to Anchor Environmental Consultants via e-mail or post.

cheruscha@anchorenvironmental.co.za

Suite 8 Steenberg House, Steenberg Office Park, Silverwood Close, Tokai, 7945

Alternatively, please phone the number below to provide comment:

Tel: +27 21 701 3420

Name and Surname:			
Telephone No.:		Fax No.:	
Postal address:			
E-mail:			
Preferred method of contact (tick the box):	<input type="checkbox"/>	<input type="checkbox"/>	<input type="checkbox"/>
	<input type="checkbox"/>	<input type="checkbox"/>	<input type="checkbox"/>

Please note: We are compliant with the Protection of Personal Information (POPI) Act (see attached letter). Your personal information will be used for the purposes of this project only and will not be shared to third parties outside of this project or made public without your permission or knowledge. We will, however, make all stakeholder comments available to the public, although these will be kept anonymous. Please sign below to indicated that you are aware of and accept these terms.

Which town/ towns are you affiliated with or in which town do you stay?

What is your affiliation (e.g., private citizen, government institution, commercial fisheries, small-scale fisheries, conservation organisation, fisheries fund/ trust, community forum, etc.)

Name of institution/ company/ department that you are affiliated with (if applicable).

Government departments, please also specify your directorate and sub-directorate. Please ignore this question if you are a private citizen or small-scale fisherman with no official company

Your role in this institution (e.g., fisherman, citizen, member, Chairperson, Director, community representative)

Are you or the community you represent a user of this area? If yes – please describe how you use the area.

--

If you think you or the community your represent might be affected by this project, please explain how or why you think this might happen?

--

For those who are involved in fishing, please indicate what sector you belong to (e.g. rock lobster, traditional linefish, small pelagics) and whether you are a recreational/small scale commercial/subsistence/commercial fisher.

--

Please describe the location and details of your main fishing grounds.
(e.g. how far do you fish offshore? Do you fish on rocky reef or sandy areas or both? You can also attach or insert a map).

--

In which months do you fish and what times of the day (please indicate if this is different for different species)

--

Are there any areas that you recommend should be specifically avoided during prospecting?
(e.g., high profile reef areas or fishing grounds?). Please specify.

--

Are you aware of any sensitive areas that should be avoided?
(i.e., heritage sites, special environmental features or areas etc.)? Please provide details.

Are you aware of any other impacts that his project might have on the community or environment? Please provide details.

Do you have any mitigation measures to propose?

Do you know of any other persons, organisations or parties that should be notified?
Please provide contact details.

If you have any additional comment, questions or concerns, please elaborate.