

SITE PLAN

DESIGN CONCEPT:

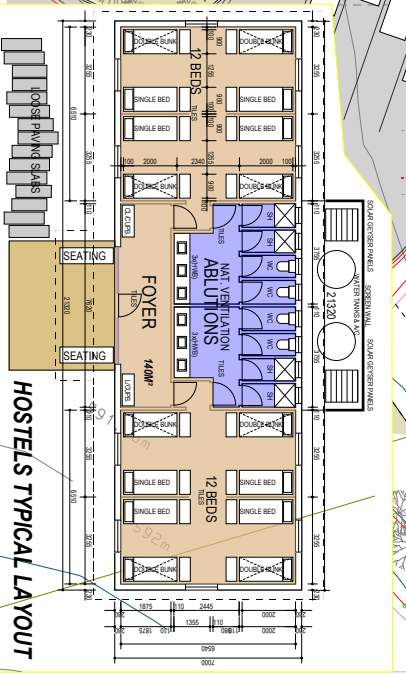
1. Placement of buildings so they are not visible from the park.
2. The design links up with the axis of existing Chief's compound / ancillary day visitor centre.
3. Central drive access point & entrance route to bus drop-off.
4. Centrally located children's block with kitchen & support building.
5. Secure grassed playground & dance area.
6. Centrally located children's block with kitchen & support building.
7. Hostel broken up into smaller, single storey buildings with courtyards in between.
8. Proposed security line integrated with building edges for safety and prevent visual impact.
9. Buildings close to road with generous setbacks.
10. Staff quarters & drivers block provides flexible accommodation (1/2 persons per room).
11. 1 x 450 hostel units comprise of 2 x 212 bed rooms with studios (~24 beds) units 120 beds total.

AREA:

- 1. DINING BLOCK = 410 M²
- 2. HOSTEL 5X 14M² = 745 M²
- 3. TEACHERS BLOCK = 155 M²

GROSS TOTAL M² = 1310 M²
(incl. walkways)

NOTE:
Each 12 Bed room units consists of 4 single beds and 4 double bunk beds.
Can be divided into 24x groups and positioned between boys & girls.
70% of the area is paved (various types of groups (longitudinal, transverse, oblique/angle)).



NEW HOSTELS FOR MAPUNGUWBE NATIONAL PARK

SKETCH PLAN PROPOSAL 2015-5-15

REVISION A (2015-05-15): -MOVE HOSTELS ±7METERS EAST AND 7METERS NORTH TO ACCOMMODATE BUS PARKING AREA BY ENGINEER -ENLARGE HOSTELS BY ±14M² ON SIDES

