

**SCREENING REPORT FOR AN ENVIRONMENTAL AUTHORIZATION AS
REQUIRED BY THE 2014 EIA REGULATIONS – PROPOSED SITE
ENVIRONMENTAL SENSITIVITY**

EIA Reference number: NCS088 MR

Project name: Hondeklipbaai MR S102

Project title: Section 102

Date screening report generated: 08/06/2021 08:34:53

Applicant: Moonstone Diamond Marketing (Pty) Ltd

Compiler: Yvonne Gutoona

Compiler signature:

.....

Application Category: Mining|Mining Right

OFFICIAL

Table of Contents

Proposed Project Location	3
Orientation map 1: General location	3
Map of proposed site and relevant area(s)	4
Cadastral details of the proposed site	4
Wind and Solar developments with an approved Environmental Authorisation or applications under consideration within 30 km of the proposed area	21
Environmental Management Frameworks relevant to the application	21
Environmental screening results and assessment outcomes	21
Relevant development incentives, restrictions, exclusions or prohibitions	21
Map indicating proposed development footprint within applicable development incentive, restriction, exclusion or prohibition zones	22
Proposed Development Area Environmental Sensitivity	22
Specialist assessments identified	23
Results of the environmental sensitivity of the proposed area	25
MAP OF RELATIVE AGRICULTURE THEME SENSITIVITY	25
MAP OF RELATIVE ANIMAL SPECIES THEME SENSITIVITY	26
MAP OF RELATIVE AQUATIC BIODIVERSITY THEME SENSITIVITY	27
MAP OF RELATIVE ARCHAEOLOGICAL AND CULTURAL HERITAGE THEME SENSITIVITY	28
MAP OF RELATIVE CIVIL AVIATION THEME SENSITIVITY	29
MAP OF RELATIVE DEFENCE THEME SENSITIVITY	30
MAP OF RELATIVE PALEONTOLOGY THEME SENSITIVITY	31
MAP OF RELATIVE PLANT SPECIES THEME SENSITIVITY	32
MAP OF RELATIVE TERRESTRIAL BIODIVERSITY THEME SENSITIVITY	33

Proposed Project Location

Orientation map 1: General location



Map of proposed site and relevant area(s)



Cadastral details of the proposed site

Property details:

No	Farm Name	Farm/ Erf No	Portion	Latitude	Longitude	Property Type
1	HONDEKLIP BAY	5	0	30°19'6.14S	17°16'19.97E	Erven
2	HONDEKLIP BAY	15	0	30°18'57.55S	17°16'39.01E	Erven
3	HONDEKLIP BAY	17	0	30°18'56.68S	17°16'42.06E	Erven
4	HONDEKLIP BAY	32	0	30°18'56.55S	17°16'49.27E	Erven
5	HONDEKLIP BAY	36	0	30°19'0.04S	17°16'44.95E	Erven
6	HONDEKLIP BAY	41	0	30°19'3.42S	17°16'48.19E	Erven
7	HONDEKLIP BAY	72	0	30°19'5.47S	17°16'38.82E	Erven
8	HONDEKLIP BAY	78	0	30°19'6.37S	17°16'42.34E	Erven
9	HONDEKLIP BAY	82	0	30°19'7.74S	17°16'41.04E	Erven
10	HONDEKLIP BAY	99	0	30°19'9.37S	17°16'43.49E	Erven
11	HONDEKLIP BAY	116	0	30°19'11.22S	17°16'46.24E	Erven
12	HONDEKLIP BAY	125	0	30°19'14.12S	17°16'41.88E	Erven
13	HONDEKLIP BAY	130	0	30°19'15.38S	17°16'43.58E	Erven
14	HONDEKLIP BAY	137	0	30°19'3.96S	17°16'40.68E	Erven
15	HONDEKLIP BAY	149	0	30°19'11.94S	17°16'46.99E	Erven

16	HONDEKLIP BAY	161	0	30°19'3.51S	17°16'39.39E	Erven
17	HONDEKLIP BAY	168	0	30°19'4.86S	17°16'37.03E	Erven
18	HONDEKLIP BAY	170	0	30°19'5.84S	17°16'37.52E	Erven
19	HONDEKLIP BAY	193	0	30°19'4.84S	17°16'35.35E	Erven
20	HONDEKLIP BAY	200	0	30°19'3.2S	17°16'35.81E	Erven
21	HONDEKLIP BAY	208	0	30°19'6.99S	17°16'35.38E	Erven
22	HONDEKLIP BAY	218	0	30°19'3.27S	17°16'33.84E	Erven
23	HONDEKLIP BAY	232	0	30°19'14.77S	17°16'30.91E	Erven
24	HONDEKLIP BAY	240	0	30°19'7.69S	17°16'30.25E	Erven
25	HONDEKLIP BAY	268	0	30°18'59.68S	17°16'35.31E	Erven
26	HONDEKLIP BAY	20	0	30°18'54.36S	17°16'45.57E	Erven
27	HONDEKLIP BAY	27	0	30°18'52.83S	17°16'54.9E	Erven
28	HONDEKLIP BAY	40	0	30°19'4.17S	17°16'47.07E	Erven
29	HONDEKLIP BAY	66	0	30°18'55.7S	17°16'36.74E	Erven
30	HONDEKLIP BAY	69	0	30°19'1.88S	17°16'39.31E	Erven
31	HONDEKLIP BAY	85	0	30°19'11.45S	17°16'39.95E	Erven
32	HONDEKLIP BAY	104	0	30°19'8.19S	17°16'42.45E	Erven
33	HONDEKLIP BAY	108	0	30°19'10.78S	17°16'44.76E	Erven
34	HONDEKLIP BAY	110	0	30°19'9.93S	17°16'45.06E	Erven
35	HONDEKLIP BAY	119	0	30°19'12.03S	17°16'43.64E	Erven
36	HONDEKLIP BAY	120	0	30°19'11.36S	17°16'42.61E	Erven
37	HONDEKLIP BAY	126	0	30°19'14.67S	17°16'42.93E	Erven
38	HONDEKLIP BAY	134	0	30°19'12.87S	17°16'45.51E	Erven
39	HONDEKLIP BAY	138	0	30°19'5.04S	17°16'39.45E	Erven
40	HONDEKLIP BAY	140	0	30°19'6.93S	17°16'43.95E	Erven
41	HONDEKLIP BAY	143	0	30°19'12.53S	17°16'40.41E	Erven
42	HONDEKLIP BAY	144	0	30°19'13.48S	17°16'41.14E	Erven
43	HONDEKLIP BAY	157	0	30°19'2.5S	17°16'37.96E	Erven
44	HONDEKLIP BAY	171	0	30°19'6.23S	17°16'37.87E	Erven
45	HONDEKLIP BAY	192	0	30°19'5.23S	17°16'35.67E	Erven
46	HONDEKLIP	198	0	30°19'2.62S	17°16'36.66E	Erven

	BAY					
47	HONDEKLIP BAY	199	0	30°19'2.91S	17°16'36.24E	Erven
48	HONDEKLIP BAY	207	0	30°19'7.41S	17°16'35.74E	Erven
49	HONDEKLIP BAY	212	0	30°19'5.35S	17°16'33.95E	Erven
50	HONDEKLIP BAY	215	0	30°19'4.18S	17°16'32.92E	Erven
51	HONDEKLIP BAY	217	0	30°19'3.55S	17°16'33.42E	Erven
52	HONDEKLIP BAY	228	0	30°19'2.28S	17°16'32.83E	Erven
53	HONDEKLIP BAY	7	0	30°19'4.85S	17°16'22.34E	Erven
54	HONDEKLIP BAY	39	0	30°19'4.91S	17°16'45.94E	Erven
55	HONDEKLIP BAY	58	0	30°19'4.87S	17°16'53.01E	Erven
56	HONDEKLIP BAY	59	0	30°19'5.61S	17°16'51.88E	Erven
57	HONDEKLIP BAY	83	0	30°19'8.55S	17°16'40.52E	Erven
58	HONDEKLIP BAY	91	0	30°19'6.46S	17°16'39.65E	Erven
59	HONDEKLIP BAY	112	0	30°19'9S	17°16'45.43E	Erven
60	HONDEKLIP BAY	129	0	30°19'13.28S	17°16'44.4E	Erven
61	HONDEKLIP BAY	136	0	30°19'11.14S	17°16'48.45E	Erven
62	HONDEKLIP BAY	158	0	30°19'2.9S	17°16'38.31E	Erven
63	HONDEKLIP BAY	159	0	30°19'3.3S	17°16'38.67E	Erven
64	HONDEKLIP BAY	162	0	30°19'3.19S	17°16'39.87E	Erven
65	HONDEKLIP BAY	167	0	30°19'4.55S	17°16'37.64E	Erven
66	HONDEKLIP BAY	172	0	30°19'6.7S	17°16'38.25E	Erven
67	HONDEKLIP BAY	181	0	30°19'9.68S	17°16'37.4E	Erven
68	HONDEKLIP BAY	182	0	30°19'9.4S	17°16'37.94E	Erven
69	HONDEKLIP BAY	203	0	30°19'4.05S	17°16'34.52E	Erven
70	HONDEKLIP BAY	220	0	30°19'2.7S	17°16'34.7E	Erven
71	HONDEKLIP BAY	222	0	30°19'2.14S	17°16'35.56E	Erven
72	HONDEKLIP BAY	224	0	30°19'0.85S	17°16'32.55E	Erven
73	HONDEKLIP BAY	225	0	30°19'1.25S	17°16'32.9E	Erven
74	HONDEKLIP BAY	281	0	30°19'21.82S	17°16'26.75E	Erven
75	HONDEKLIP BAY	287	0	30°18'59.6S	17°16'33.99E	Erven
76	HONDEKLIP BAY	296	0	30°19'3.26S	17°16'53.12E	Erven

77	HONDEKLIP BAY	318	0	30°18'56.63S	17°16'58.08E	Erven
78	HONDEKLIP BAY	326	0	30°18'58.84S	17°16'54.75E	Erven
79	HONDEKLIP BAY	333	0	30°19'1.69S	17°16'53.28E	Erven
80	HONDEKLIP BAY	336	0	30°19'0.85S	17°16'54.53E	Erven
81	HONDEKLIP BAY	19	0	30°18'55.11S	17°16'44.45E	Erven
82	HONDEKLIP BAY	23	0	30°18'52.13S	17°16'48.95E	Erven
83	HONDEKLIP BAY	24	0	30°18'51.39S	17°16'50.08E	Erven
84	HONDEKLIP BAY	25	0	30°18'50.65S	17°16'51.2E	Erven
85	HONDEKLIP BAY	28	0	30°18'53.58S	17°16'53.77E	Erven
86	HONDEKLIP BAY	31	0	30°18'55.8S	17°16'50.39E	Erven
87	HONDEKLIP BAY	43	0	30°19'1.94S	17°16'50.44E	Erven
88	HONDEKLIP BAY	89	0	30°19'10.45S	17°16'39.92E	Erven
89	HONDEKLIP BAY	96	0	30°19'8.46S	17°16'44.51E	Erven
90	HONDEKLIP BAY	97	0	30°19'8.6S	17°16'43.94E	Erven
91	HONDEKLIP BAY	103	0	30°19'9.01S	17°16'42.76E	Erven
92	HONDEKLIP BAY	124	0	30°19'13.32S	17°16'42.17E	Erven
93	HONDEKLIP BAY	132	0	30°19'14.78S	17°16'44.63E	Erven
94	HONDEKLIP BAY	148	0	30°19'12.71S	17°16'46.26E	Erven
95	HONDEKLIP BAY	163	0	30°19'2.87S	17°16'40.34E	Erven
96	HONDEKLIP BAY	174	0	30°19'7.88S	17°16'38.64E	Erven
97	HONDEKLIP BAY	175	0	30°19'8.32S	17°16'38.79E	Erven
98	HONDEKLIP BAY	179	0	30°19'10.03S	17°16'38.4E	Erven
99	HONDEKLIP BAY	180	0	30°19'10.31S	17°16'37.95E	Erven
100	HONDEKLIP BAY	184	0	30°19'8.55S	17°16'37.9E	Erven
101	HONDEKLIP BAY	188	0	30°19'6.78S	17°16'37.03E	Erven
102	HONDEKLIP BAY	201	0	30°19'3.48S	17°16'35.38E	Erven
103	HONDEKLIP BAY	205	0	30°19'8.49S	17°16'36.56E	Erven
104	HONDEKLIP BAY	209	0	30°19'6.57S	17°16'35.02E	Erven
105	HONDEKLIP BAY	213	0	30°19'4.96S	17°16'33.6E	Erven
106	HONDEKLIP BAY	223	0	30°19'0.45S	17°16'32.18E	Erven
107	HONDEKLIP	230	0	30°19'1.78S	17°16'30.85E	Erven

	BAY					
108	HONDEKLIP BAY	3	0	30°18'56.48S	17°16'33.45E	Erven
109	HONDEKLIP BAY	16	0	30°18'56.93S	17°16'40.33E	Erven
110	HONDEKLIP BAY	22	0	30°18'52.88S	17°16'47.82E	Erven
111	HONDEKLIP BAY	29	0	30°18'54.32S	17°16'52.64E	Erven
112	HONDEKLIP BAY	33	0	30°18'57.29S	17°16'48.14E	Erven
113	HONDEKLIP BAY	34	0	30°18'58.03S	17°16'47.02E	Erven
114	HONDEKLIP BAY	63	0	30°19'7.54S	17°16'56.65E	Erven
115	HONDEKLIP BAY	87	0	30°19'11.18S	17°16'38.83E	Erven
116	HONDEKLIP BAY	100	0	30°19'10.15S	17°16'43.86E	Erven
117	HONDEKLIP BAY	102	0	30°19'9.04S	17°16'42.23E	Erven
118	HONDEKLIP BAY	115	0	30°19'10.33S	17°16'46.59E	Erven
119	HONDEKLIP BAY	117	0	30°19'11.55S	17°16'45.1E	Erven
120	HONDEKLIP BAY	122	0	30°19'12.34S	17°16'42.29E	Erven
121	HONDEKLIP BAY	142	0	30°19'11.36S	17°16'43.52E	Erven
122	HONDEKLIP BAY	145	0	30°19'14.95S	17°16'42.16E	Erven
123	HONDEKLIP BAY	146	0	30°19'15.81S	17°16'42.94E	Erven
124	HONDEKLIP BAY	154	0	30°19'1.25S	17°16'36.87E	Erven
125	HONDEKLIP BAY	164	0	30°19'2.55S	17°16'40.81E	Erven
126	HONDEKLIP BAY	166	0	30°19'4.25S	17°16'38.07E	Erven
127	HONDEKLIP BAY	169	0	30°19'5.39S	17°16'37E	Erven
128	HONDEKLIP BAY	189	0	30°19'6.39S	17°16'36.69E	Erven
129	HONDEKLIP BAY	191	0	30°19'5.62S	17°16'36.01E	Erven
130	HONDEKLIP BAY	195	0	30°19'4.21S	17°16'36.6E	Erven
131	HONDEKLIP BAY	196	0	30°19'3.9S	17°16'37.07E	Erven
132	HONDEKLIP BAY	197	0	30°19'1.88S	17°16'36.01E	Erven
133	HONDEKLIP BAY	202	0	30°19'3.77S	17°16'34.96E	Erven
134	HONDEKLIP BAY	211	0	30°19'5.76S	17°16'34.3E	Erven
135	HONDEKLIP BAY	37	0	30°19'0.99S	17°16'44.1E	Erven
136	HONDEKLIP BAY	61	0	30°19'7.1S	17°16'49.64E	Erven
137	HONDEKLIP BAY	64	0	30°19'3.61S	17°16'25.44E	Erven

138	HONDEKLIP BAY	73	0	30°19'4.6S	17°16'40.11E	Erven
139	HONDEKLIP BAY	79	0	30°19'6.7S	17°16'41.86E	Erven
140	HONDEKLIP BAY	80	0	30°19'6.97S	17°16'41.41E	Erven
141	HONDEKLIP BAY	88	0	30°19'10.8S	17°16'39.39E	Erven
142	HONDEKLIP BAY	95	0	30°19'7.87S	17°16'44.3E	Erven
143	HONDEKLIP BAY	98	0	30°19'9.45S	17°16'44.15E	Erven
144	HONDEKLIP BAY	101	0	30°19'10.32S	17°16'43.32E	Erven
145	HONDEKLIP BAY	107	0	30°19'7.3S	17°16'43.49E	Erven
146	HONDEKLIP BAY	109	0	30°19'10.72S	17°16'45.33E	Erven
147	HONDEKLIP BAY	111	0	30°19'9.84S	17°16'45.69E	Erven
148	HONDEKLIP BAY	118	0	30°19'11.47S	17°16'44.37E	Erven
149	HONDEKLIP BAY	128	0	30°19'12.84S	17°16'43.46E	Erven
150	HONDEKLIP BAY	131	0	30°19'14.29S	17°16'44.01E	Erven
151	HONDEKLIP BAY	133	0	30°19'13.39S	17°16'46.5E	Erven
152	HONDEKLIP BAY	141	0	30°19'9.94S	17°16'42.62E	Erven
153	HONDEKLIP BAY	150	0	30°19'11.46S	17°16'47.95E	Erven
154	HONDEKLIP BAY	151	0	30°19'11.96S	17°16'48.68E	Erven
155	HONDEKLIP BAY	351	0	30°18'58.97S	17°16'59.46E	Erven
156	HONDEKLIP BAY	364	0	30°19'2.54S	17°16'54.02E	Erven
157	HONDEKLIP BAY	373	0	30°19'0.97S	17°16'59.25E	Erven
158	HONDEKLIP BAY	377	0	30°18'59.87S	17°17'0.92E	Erven
159	HONDEKLIP BAY	384	0	30°19'1.85S	17°17'0.02E	Erven
160	HONDEKLIP BAY	402	0	30°18'52.58S	17°16'39.04E	Erven
161	HONDEKLIP BAY	406	0	30°18'53.74S	17°16'38.61E	Erven
162	HONDEKLIP BAY	407	0	30°18'53.19S	17°16'38.11E	Erven
163	HONDEKLIP BAY	444	0	30°18'48.03S	17°16'48.59E	Erven
164	HONDEKLIP BAY	452	0	30°18'45.43S	17°16'49.84E	Erven
165	HONDEKLIP BAY	453	0	30°18'46S	17°16'50.33E	Erven
166	HONDEKLIP BAY	460	0	30°18'44.37S	17°16'51.28E	Erven
167	HONDEKLIP BAY	628	0	30°18'50.14S	17°16'33.33E	Erven
168	HONDEKLIP	635	0	30°18'49.62S	17°16'36.82E	Erven

	BAY					
169	HONDEKLIP BAY	636	0	30°18'50.25S	17°16'37.22E	Erven
170	HONDEKLIP BAY	639	0	30°18'50.85S	17°16'36.3E	Erven
171	HONDEKLIP BAY	650	0	30°18'48.8S	17°16'38.03E	Erven
172	HONDEKLIP BAY	673	0	30°18'42.69S	17°16'44.59E	Erven
173	HONDEKLIP BAY	681	0	30°18'43.93S	17°16'44.07E	Erven
174	HONDEKLIP BAY	682	0	30°18'43.3S	17°16'43.67E	Erven
175	HONDEKLIP BAY	684	0	30°18'41.85S	17°16'47.22E	Erven
176	HONDEKLIP BAY	702	0	30°18'58.58S	17°16'41.04E	Erven
177	HONDEKLIP BAY	291	0	30°19'0.09S	17°16'50.31E	Erven
178	HONDEKLIP BAY	322	0	30°18'57.74S	17°16'56.41E	Erven
179	HONDEKLIP BAY	323	0	30°18'58.01S	17°16'56E	Erven
180	HONDEKLIP BAY	348	0	30°18'57.55S	17°16'59.55E	Erven
181	HONDEKLIP BAY	350	0	30°18'58.68S	17°16'59.88E	Erven
182	HONDEKLIP BAY	357	0	30°19'0.61S	17°16'56.96E	Erven
183	HONDEKLIP BAY	370	0	30°19'1.8S	17°16'58E	Erven
184	HONDEKLIP BAY	376	0	30°19'0.15S	17°17'0.5E	Erven
185	HONDEKLIP BAY	379	0	30°19'0.46S	17°17'2.12E	Erven
186	HONDEKLIP BAY	386	0	30°19'2.4S	17°16'59.19E	Erven
187	HONDEKLIP BAY	396	0	30°19'9.84S	17°16'41.54E	Erven
188	HONDEKLIP BAY	408	0	30°18'52.63S	17°16'37.63E	Erven
189	HONDEKLIP BAY	410	0	30°18'50.05S	17°16'40.21E	Erven
190	HONDEKLIP BAY	424	0	30°18'50.88S	17°16'44.31E	Erven
191	HONDEKLIP BAY	427	0	30°18'50.36S	17°16'42.41E	Erven
192	HONDEKLIP BAY	428	0	30°18'49.8S	17°16'41.92E	Erven
193	HONDEKLIP BAY	430	0	30°18'47.21S	17°16'44.49E	Erven
194	HONDEKLIP BAY	439	0	30°18'47.82S	17°16'43.57E	Erven
195	HONDEKLIP BAY	440	0	30°18'45.8S	17°16'46.64E	Erven
196	HONDEKLIP BAY	458	0	30°18'45.53S	17°16'48.37E	Erven
197	HONDEKLIP BAY	461	0	30°18'58.18S	17°16'36.05E	Erven
198	HONDEKLIP BAY	625	0	30°19'6.23S	17°16'31.24E	Erven

199	HONDEKLIP BAY	638	0	30°18'51.48S	17°16'36.69E	Erven
200	HONDEKLIP BAY	668	0	30°18'47.23S	17°16'43.12E	Erven
201	HONDEKLIP BAY	671	0	30°18'45.35S	17°16'41.93E	Erven
202	HONDEKLIP BAY	685	0	30°18'42.47S	17°16'47.62E	Erven
203	HONDEKLIP BAY	686	0	30°18'43.1S	17°16'48.02E	Erven
204	HONDEKLIP BAY	1	0	30°19'30.51S	17°17'31.8E	Erven
205	HONDEKLIP BAY	2	0	30°18'31.99S	17°16'14.76E	Erven
206	HONDEKLIP BAY	18	0	30°18'55.85S	17°16'43.33E	Erven
207	HONDEKLIP BAY	26	0	30°18'49.9S	17°16'52.33E	Erven
208	HONDEKLIP BAY	30	0	30°18'55.06S	17°16'51.52E	Erven
209	HONDEKLIP BAY	75	0	30°19'4.78S	17°16'41.99E	Erven
210	HONDEKLIP BAY	81	0	30°19'7.67S	17°16'41.64E	Erven
211	HONDEKLIP BAY	86	0	30°19'11.81S	17°16'39.39E	Erven
212	HONDEKLIP BAY	90	0	30°19'7.52S	17°16'40E	Erven
213	HONDEKLIP BAY	92	0	30°19'6.21S	17°16'40.46E	Erven
214	HONDEKLIP BAY	94	0	30°19'7.56S	17°16'44.99E	Erven
215	HONDEKLIP BAY	123	0	30°19'12.88S	17°16'41.14E	Erven
216	HONDEKLIP BAY	135	0	30°19'12.47S	17°16'47.59E	Erven
217	HONDEKLIP BAY	153	0	30°19'0.83S	17°16'36.5E	Erven
218	HONDEKLIP BAY	160	0	30°19'3.83S	17°16'38.93E	Erven
219	HONDEKLIP BAY	177	0	30°19'9.28S	17°16'39.22E	Erven
220	HONDEKLIP BAY	183	0	30°19'8.98S	17°16'38.16E	Erven
221	HONDEKLIP BAY	186	0	30°19'7.68S	17°16'37.59E	Erven
222	HONDEKLIP BAY	219	0	30°19'2.99S	17°16'34.28E	Erven
223	HONDEKLIP BAY	235	0	30°19'4.61S	17°16'29.68E	Erven
224	HONDEKLIP BAY	262	0	30°19'13.81S	17°16'24.31E	Erven
225	HONDEKLIP BAY	270	0	30°19'1.4S	17°16'48.63E	Erven
226	HONDEKLIP BAY	283	0	30°19'5.04S	17°16'26.5E	Erven
227	HONDEKLIP BAY	295	0	30°19'2.26S	17°16'52.23E	Erven
228	HONDEKLIP BAY	298	0	30°19'4.49S	17°16'54.18E	Erven
229	HONDEKLIP	299	0	30°19'4.97S	17°16'54.61E	Erven

	BAY					
230	HONDEKLIP BAY	4	0	30°19'7.03S	17°16'19.12E	Erven
231	HONDEKLIP BAY	6	0	30°19'5.52S	17°16'20.91E	Erven
232	HONDEKLIP BAY	21	0	30°18'53.62S	17°16'46.7E	Erven
233	HONDEKLIP BAY	35	0	30°18'58.77S	17°16'45.89E	Erven
234	HONDEKLIP BAY	38	0	30°19'1.49S	17°16'42.75E	Erven
235	HONDEKLIP BAY	60	0	30°19'6.35S	17°16'50.76E	Erven
236	HONDEKLIP BAY	62	0	30°19'7.84S	17°16'48.51E	Erven
237	HONDEKLIP BAY	74	0	30°19'3.48S	17°16'41.42E	Erven
238	HONDEKLIP BAY	77	0	30°19'6.02S	17°16'42.88E	Erven
239	HONDEKLIP BAY	84	0	30°19'11.1S	17°16'40.48E	Erven
240	HONDEKLIP BAY	105	0	30°19'8.15S	17°16'43.06E	Erven
241	HONDEKLIP BAY	106	0	30°19'7.45S	17°16'42.91E	Erven
242	HONDEKLIP BAY	113	0	30°19'8.89S	17°16'46.17E	Erven
243	HONDEKLIP BAY	121	0	30°19'11.73S	17°16'41.64E	Erven
244	HONDEKLIP BAY	127	0	30°19'13.76S	17°16'43.2E	Erven
245	HONDEKLIP BAY	139	0	30°19'5.67S	17°16'41.05E	Erven
246	HONDEKLIP BAY	147	0	30°19'13.82S	17°16'45.15E	Erven
247	HONDEKLIP BAY	155	0	30°19'1.66S	17°16'37.24E	Erven
248	HONDEKLIP BAY	156	0	30°19'2.08S	17°16'37.6E	Erven
249	HONDEKLIP BAY	165	0	30°19'3.61S	17°16'37.52E	Erven
250	HONDEKLIP BAY	173	0	30°19'7.35S	17°16'38.46E	Erven
251	HONDEKLIP BAY	176	0	30°19'8.77S	17°16'38.95E	Erven
252	HONDEKLIP BAY	187	0	30°19'7.19S	17°16'37.41E	Erven
253	HONDEKLIP BAY	226	0	30°19'1.66S	17°16'33.25E	Erven
254	HONDEKLIP BAY	227	0	30°19'2.08S	17°16'33.6E	Erven
255	HONDEKLIP BAY	249	0	30°19'10.32S	17°16'26.87E	Erven
256	HONDEKLIP BAY	250	0	30°19'10.03S	17°16'28.05E	Erven
257	HONDEKLIP BAY	232	0	30°19'7.52S	17°16'21.37E	Erven
258	HONDEKLIP BAY	245	0	30°19'10S	17°16'33.86E	Erven
259	HONDEKLIP BAY	246	0	30°19'10.21S	17°16'32.95E	Erven

260	HONDEKLIP BAY	255	0	30°19'8.76S	17°16'26.17E	Erven
261	HONDEKLIP BAY	258	0	30°19'8.55S	17°16'19.99E	Erven
262	HONDEKLIP BAY	259	0	30°19'8.9S	17°16'19.43E	Erven
263	HONDEKLIP BAY	264	0	30°19'13.49S	17°16'34.09E	Erven
264	HONDEKLIP BAY	266	0	30°18'54.35S	17°16'36.21E	Erven
265	HONDEKLIP BAY	273	0	30°19'3.59S	17°16'50.56E	Erven
266	HONDEKLIP BAY	276	0	30°19'2.5S	17°16'48.72E	Erven
267	HONDEKLIP BAY	286	0	30°19'0.02S	17°16'33.38E	Erven
268	HONDEKLIP BAY	288	0	30°19'0.53S	17°16'34.3E	Erven
269	HONDEKLIP BAY	292	0	30°19'0.56S	17°16'50.74E	Erven
270	HONDEKLIP BAY	294	0	30°19'1.51S	17°16'51.58E	Erven
271	HONDEKLIP BAY	303	0	30°18'59.06S	17°16'52.31E	Erven
272	HONDEKLIP BAY	305	0	30°18'58.51S	17°16'53.14E	Erven
273	HONDEKLIP BAY	317	0	30°18'56.34S	17°16'58.49E	Erven
274	HONDEKLIP BAY	324	0	30°18'58.29S	17°16'55.58E	Erven
275	HONDEKLIP BAY	329	0	30°18'59.66S	17°16'53.49E	Erven
276	HONDEKLIP BAY	334	0	30°19'1.4S	17°16'53.69E	Erven
277	HONDEKLIP BAY	341	0	30°18'59.47S	17°16'56.61E	Erven
278	HONDEKLIP BAY	353	0	30°18'59.52S	17°16'58.63E	Erven
279	HONDEKLIP BAY	358	0	30°19'0.89S	17°16'56.54E	Erven
280	HONDEKLIP BAY	359	0	30°19'1.17S	17°16'56.13E	Erven
281	HONDEKLIP BAY	368	0	30°19'2.35S	17°16'57.16E	Erven
282	HONDEKLIP BAY	388	0	30°19'2.95S	17°16'58.35E	Erven
283	HONDEKLIP BAY	389	0	30°19'3.22S	17°16'57.93E	Erven
284	HONDEKLIP BAY	398	0	30°19'12.12S	17°16'32.7E	Erven
285	HONDEKLIP BAY	403	0	30°18'53.13S	17°16'39.53E	Erven
286	HONDEKLIP BAY	405	0	30°18'54.31S	17°16'39.12E	Erven
287	HONDEKLIP BAY	419	0	30°18'50.66S	17°16'39.28E	Erven
288	HONDEKLIP BAY	425	0	30°18'51.48S	17°16'43.4E	Erven
289	HONDEKLIP BAY	432	0	30°18'48.32S	17°16'45.48E	Erven
290	HONDEKLIP	442	0	30°18'46.91S	17°16'47.62E	Erven

	BAY					
291	HONDEKLIP BAY	446	0	30°18'48.08S	17°16'47.18E	Erven
292	HONDEKLIP BAY	454	0	30°18'46.57S	17°16'50.82E	Erven
293	HONDEKLIP BAY	629	0	30°18'50.75S	17°16'33.72E	Erven
294	HONDEKLIP BAY	632	0	30°18'52.64S	17°16'34.91E	Erven
295	HONDEKLIP BAY	641	0	30°18'49.6S	17°16'35.5E	Erven
296	HONDEKLIP BAY	642	0	30°18'48.97S	17°16'35.1E	Erven
297	HONDEKLIP BAY	647	0	30°18'49.44S	17°16'39.75E	Erven
298	HONDEKLIP BAY	648	0	30°18'50.06S	17°16'38.84E	Erven
299	HONDEKLIP BAY	656	0	30°18'47.39S	17°16'41.49E	Erven
300	HONDEKLIP BAY	657	0	30°18'48.02S	17°16'41.89E	Erven
301	HONDEKLIP BAY	663	0	30°18'44.11S	17°16'42.45E	Erven
302	HONDEKLIP BAY	670	0	30°18'45.98S	17°16'42.32E	Erven
303	HONDEKLIP BAY	672	0	30°18'44.72S	17°16'41.53E	Erven
304	HONDEKLIP BAY	683	0	30°18'41.22S	17°16'46.82E	Erven
305	HONDEKLIP BAY	689	0	30°18'43.75S	17°16'47.04E	Erven
306	HONDEKLIP BAY	256	0	30°19'8.55S	17°16'27.09E	Erven
307	HONDEKLIP BAY	260	0	30°19'9.36S	17°16'19.82E	Erven
308	HONDEKLIP BAY	261	0	30°19'9.81S	17°16'20.21E	Erven
309	HONDEKLIP BAY	297	0	30°19'4.01S	17°16'53.77E	Erven
310	HONDEKLIP BAY	302	0	30°18'59.34S	17°16'51.89E	Erven
311	HONDEKLIP BAY	307	0	30°18'57.96S	17°16'53.98E	Erven
312	HONDEKLIP BAY	311	0	30°18'56.87S	17°16'55.64E	Erven
313	HONDEKLIP BAY	314	0	30°18'56.03S	17°16'56.89E	Erven
314	HONDEKLIP BAY	321	0	30°18'57.46S	17°16'56.83E	Erven
315	HONDEKLIP BAY	330	0	30°18'59.94S	17°16'53.07E	Erven
316	HONDEKLIP BAY	332	0	30°19'0.49S	17°16'52.22E	Erven
317	HONDEKLIP BAY	338	0	30°19'0.3S	17°16'55.36E	Erven
318	HONDEKLIP BAY	344	0	30°18'58.64S	17°16'57.86E	Erven
319	HONDEKLIP BAY	345	0	30°18'58.37S	17°16'58.28E	Erven
320	HONDEKLIP BAY	369	0	30°19'2.08S	17°16'57.58E	Erven

321	HONDEKLIP BAY	394	0	30°19'11.53S	17°16'27.39E	Erven
322	HONDEKLIP BAY	400	0	30°18'51.47S	17°16'38.06E	Erven
323	HONDEKLIP BAY	414	0	30°18'52.29S	17°16'42.17E	Erven
324	HONDEKLIP BAY	416	0	30°18'52.33S	17°16'40.75E	Erven
325	HONDEKLIP BAY	420	0	30°18'48.63S	17°16'42.35E	Erven
326	HONDEKLIP BAY	431	0	30°18'47.77S	17°16'44.98E	Erven
327	HONDEKLIP BAY	434	0	30°18'49.46S	17°16'46.45E	Erven
328	HONDEKLIP BAY	436	0	30°18'49.49S	17°16'45.04E	Erven
329	HONDEKLIP BAY	437	0	30°18'48.94S	17°16'44.55E	Erven
330	HONDEKLIP BAY	449	0	30°18'46.41S	17°16'45.72E	Erven
331	HONDEKLIP BAY	467	0	30°19'0.7S	17°16'38.25E	Erven
332	HONDEKLIP BAY	640	0	30°18'50.23S	17°16'35.9E	Erven
333	HONDEKLIP BAY	643	0	30°18'46.94S	17°16'38.16E	Erven
334	HONDEKLIP BAY	646	0	30°18'48.81S	17°16'39.34E	Erven
335	HONDEKLIP BAY	651	0	30°18'48.17S	17°16'37.63E	Erven
336	HONDEKLIP BAY	674	0	30°18'43.32S	17°16'44.99E	Erven
337	HONDEKLIP BAY	680	0	30°18'44.56S	17°16'44.47E	Erven
338	HONDEKLIP BAY	693	0	30°19'8.67S	17°16'33.49E	Erven
339	HONDEKLIP BAY	701	0	30°18'58.14S	17°16'41.51E	Erven
340	HONDEKLIP BAY	229	0	30°19'2.77S	17°16'31.89E	Erven
341	HONDEKLIP BAY	231	0	30°19'1.38S	17°16'31.79E	Erven
342	HONDEKLIP BAY	236	0	30°19'6.07S	17°16'29.74E	Erven
343	HONDEKLIP BAY	241	0	30°19'9.4S	17°16'30.73E	Erven
344	HONDEKLIP BAY	242	0	30°19'9.18S	17°16'31.65E	Erven
345	HONDEKLIP BAY	243	0	30°19'8.92S	17°16'32.47E	Erven
346	HONDEKLIP BAY	248	0	30°19'10.64S	17°16'31.12E	Erven
347	HONDEKLIP BAY	251	0	30°19'9.75S	17°16'29.26E	Erven
348	HONDEKLIP BAY	253	0	30°19'11.26S	17°16'28.58E	Erven
349	HONDEKLIP BAY	263	0	30°19'21.89S	17°16'32.95E	Erven
350	HONDEKLIP BAY	274	0	30°19'3.97S	17°16'50E	Erven
351	HONDEKLIP	282	0	30°18'41.47S	17°16'49.13E	Erven

	BAY					
352	HONDEKLIP BAY	284	0	30°19'3.61S	17°16'28.99E	Erven
353	HONDEKLIP BAY	293	0	30°19'1.04S	17°16'51.15E	Erven
354	HONDEKLIP BAY	304	0	30°18'58.79S	17°16'52.73E	Erven
355	HONDEKLIP BAY	312	0	30°18'56.59S	17°16'56.06E	Erven
356	HONDEKLIP BAY	315	0	30°18'55.76S	17°16'57.31E	Erven
357	HONDEKLIP BAY	328	0	30°18'59.39S	17°16'53.91E	Erven
358	HONDEKLIP BAY	335	0	30°19'1.12S	17°16'54.11E	Erven
359	HONDEKLIP BAY	339	0	30°19'0.02S	17°16'55.78E	Erven
360	HONDEKLIP BAY	349	0	30°18'58.4S	17°17'0.3E	Erven
361	HONDEKLIP BAY	355	0	30°19'0.07S	17°16'57.79E	Erven
362	HONDEKLIP BAY	356	0	30°19'0.34S	17°16'57.38E	Erven
363	HONDEKLIP BAY	365	0	30°19'3.9S	17°16'55.87E	Erven
364	HONDEKLIP BAY	374	0	30°19'0.7S	17°16'59.67E	Erven
365	HONDEKLIP BAY	380	0	30°19'0.74S	17°17'1.68E	Erven
366	HONDEKLIP BAY	381	0	30°19'1.02S	17°17'1.27E	Erven
367	HONDEKLIP BAY	382	0	30°19'1.29S	17°17'0.85E	Erven
368	HONDEKLIP BAY	308	0	30°18'57.69S	17°16'54.4E	Erven
369	HONDEKLIP BAY	320	0	30°18'57.19S	17°16'57.24E	Erven
370	HONDEKLIP BAY	325	0	30°18'58.56S	17°16'55.16E	Erven
371	HONDEKLIP BAY	331	0	30°19'0.22S	17°16'52.66E	Erven
372	HONDEKLIP BAY	337	0	30°19'0.57S	17°16'54.94E	Erven
373	HONDEKLIP BAY	367	0	30°19'2.63S	17°16'56.75E	Erven
374	HONDEKLIP BAY	372	0	30°19'1.25S	17°16'58.83E	Erven
375	HONDEKLIP BAY	375	0	30°19'0.42S	17°17'0.09E	Erven
376	HONDEKLIP BAY	378	0	30°18'59.6S	17°17'1.36E	Erven
377	HONDEKLIP BAY	385	0	30°19'2.12S	17°16'59.6E	Erven
378	HONDEKLIP BAY	395	0	30°19'10.24S	17°16'40.83E	Erven
379	HONDEKLIP BAY	401	0	30°18'52.02S	17°16'38.55E	Erven
380	HONDEKLIP BAY	409	0	30°18'52.07S	17°16'37.14E	Erven
381	HONDEKLIP BAY	421	0	30°18'49.19S	17°16'42.84E	Erven

382	HONDEKLIP BAY	429	0	30°18'49.24S	17°16'41.42E	Erven
383	HONDEKLIP BAY	435	0	30°18'50.06S	17°16'45.54E	Erven
384	HONDEKLIP BAY	438	0	30°18'48.38S	17°16'44.06E	Erven
385	HONDEKLIP BAY	443	0	30°18'47.47S	17°16'48.1E	Erven
386	HONDEKLIP BAY	447	0	30°18'47.52S	17°16'46.69E	Erven
387	HONDEKLIP BAY	457	0	30°18'46.08S	17°16'48.86E	Erven
388	HONDEKLIP BAY	459	0	30°18'44.97S	17°16'47.89E	Erven
389	HONDEKLIP BAY	463	0	30°19'0.14S	17°16'36.91E	Erven
390	HONDEKLIP BAY	645	0	30°18'48.18S	17°16'38.95E	Erven
391	HONDEKLIP BAY	185	0	30°19'8.11S	17°16'37.74E	Erven
392	HONDEKLIP BAY	114	0	30°19'10.08S	17°16'47.32E	Erven
393	HONDEKLIP BAY	654	0	30°18'46.14S	17°16'40.69E	Erven
394	HONDEKLIP BAY	666	0	30°18'45.99S	17°16'43.64E	Erven
395	HONDEKLIP BAY	669	0	30°18'46.6S	17°16'42.72E	Erven
396	HONDEKLIP BAY	677	0	30°18'45.2S	17°16'46.19E	Erven
397	HONDEKLIP BAY	678	0	30°18'45.81S	17°16'45.27E	Erven
398	HONDEKLIP BAY	236	0	30°19'6.52S	17°16'29.6E	Erven
399	HONDEKLIP BAY	237	0	30°19'5.42S	17°16'30.77E	Erven
400	HONDEKLIP BAY	244	0	30°19'9.84S	17°16'34.78E	Erven
401	HONDEKLIP BAY	252	0	30°19'10.99S	17°16'29.66E	Erven
402	HONDEKLIP BAY	275	0	30°19'3.24S	17°16'49.36E	Erven
403	HONDEKLIP BAY	289	0	30°19'1.11S	17°16'34.84E	Erven
404	HONDEKLIP BAY	301	0	30°18'59.64S	17°16'51.47E	Erven
405	HONDEKLIP BAY	306	0	30°18'58.24S	17°16'53.56E	Erven
406	HONDEKLIP BAY	309	0	30°18'57.41S	17°16'54.81E	Erven
407	HONDEKLIP BAY	319	0	30°18'56.91S	17°16'57.66E	Erven
408	HONDEKLIP BAY	327	0	30°18'59.11S	17°16'54.33E	Erven
409	HONDEKLIP BAY	340	0	30°18'59.74S	17°16'56.19E	Erven
410	HONDEKLIP BAY	343	0	30°18'58.92S	17°16'57.44E	Erven
411	HONDEKLIP BAY	347	0	30°18'57.81S	17°16'59.11E	Erven
412	HONDEKLIP	354	0	30°18'59.79S	17°16'58.21E	Erven

	BAY					
413	HONDEKLIP BAY	361	0	30°19'1.72S	17°16'55.29E	Erven
414	HONDEKLIP BAY	387	0	30°19'2.67S	17°16'58.77E	Erven
415	HONDEKLIP BAY	399	0	30°19'11.76S	17°16'34.19E	Erven
416	HONDEKLIP BAY	412	0	30°18'51.17S	17°16'41.18E	Erven
417	HONDEKLIP BAY	413	0	30°18'51.72S	17°16'41.67E	Erven
418	HONDEKLIP BAY	417	0	30°18'51.77S	17°16'40.26E	Erven
419	HONDEKLIP BAY	418	0	30°18'51.21S	17°16'39.78E	Erven
420	HONDEKLIP BAY	448	0	30°18'46.96S	17°16'46.2E	Erven
421	HONDEKLIP BAY	451	0	30°18'44.88S	17°16'49.36E	Erven
422	HONDEKLIP BAY	465	0	30°18'59.37S	17°16'37.95E	Erven
423	HONDEKLIP BAY	633	0	30°18'48.36S	17°16'36.02E	Erven
424	HONDEKLIP BAY	634	0	30°18'48.99S	17°16'36.42E	Erven
425	HONDEKLIP BAY	644	0	30°18'47.55S	17°16'38.55E	Erven
426	HONDEKLIP BAY	649	0	30°18'49.43S	17°16'38.44E	Erven
427	HONDEKLIP BAY	652	0	30°18'47.55S	17°16'37.24E	Erven
428	HONDEKLIP BAY	653	0	30°18'45.51S	17°16'40.3E	Erven
429	HONDEKLIP BAY	655	0	30°18'46.76S	17°16'41.09E	Erven
430	HONDEKLIP BAY	658	0	30°18'48.64S	17°16'40.98E	Erven
431	HONDEKLIP BAY	667	0	30°18'46.62S	17°16'44.04E	Erven
432	HONDEKLIP BAY	688	0	30°18'44.38S	17°16'47.44E	Erven
433	HONDEKLIP BAY	690	0	30°18'43.12S	17°16'46.64E	Erven
434	HONDEKLIP BAY	691	0	30°18'42.49S	17°16'46.24E	Erven
435	HONDEKLIP BAY	383	0	30°19'1.57S	17°17'0.44E	Erven
436	HONDEKLIP BAY	390	0	30°19'3.5S	17°16'57.51E	Erven
437	HONDEKLIP BAY	404	0	30°18'53.71S	17°16'40.02E	Erven
438	HONDEKLIP BAY	423	0	30°18'50.3S	17°16'43.81E	Erven
439	HONDEKLIP BAY	433	0	30°18'48.88S	17°16'45.96E	Erven
440	HONDEKLIP BAY	455	0	30°18'47.2S	17°16'49.86E	Erven
441	HONDEKLIP BAY	456	0	30°18'46.64S	17°16'49.35E	Erven
442	HONDEKLIP BAY	466	0	30°19'1.01S	17°16'37.67E	Erven

443	HONDEKLIP BAY	662	0	30°18'46.13S	17°16'39.38E	Erven
444	HONDEKLIP BAY	665	0	30°18'45.36S	17°16'43.25E	Erven
445	HONDEKLIP BAY	679	0	30°18'45.19S	17°16'44.87E	Erven
446	HONDEKLIP BAY	687	0	30°18'43.72S	17°16'48.41E	Erven
447	HONDEKLIP BAY	694	0	30°18'58.92S	17°16'40.26E	Erven
448	HONDEKLIP BAY	426	0	30°18'50.91S	17°16'42.89E	Erven
449	HONDEKLIP BAY	269	0	30°19'1.77S	17°16'48.07E	Erven
450	HONDEKLIP BAY	76	0	30°19'5.64S	17°16'43.44E	Erven
451	HONDEKLIP BAY	178	0	30°19'9.73S	17°16'38.94E	Erven
452	HONDEKLIP BAY	190	0	30°19'6S	17°16'36.35E	Erven
453	HONDEKLIP BAY	194	0	30°19'4.54S	17°16'36.11E	Erven
454	HONDEKLIP BAY	204	0	30°19'4.33S	17°16'34.1E	Erven
455	HONDEKLIP BAY	206	0	30°19'7.82S	17°16'36.1E	Erven
456	HONDEKLIP BAY	210	0	30°19'6.16S	17°16'34.65E	Erven
457	HONDEKLIP BAY	214	0	30°19'4.58S	17°16'33.27E	Erven
458	HONDEKLIP BAY	216	0	30°19'3.79S	17°16'32.6E	Erven
459	HONDEKLIP BAY	221	0	30°19'2.43S	17°16'35.13E	Erven
460	HONDEKLIP BAY	234	0	30°19'2.89S	17°16'28.45E	Erven
461	HONDEKLIP BAY	238	0	30°19'7.25S	17°16'32.37E	Erven
462	HONDEKLIP BAY	239	0	30°19'7.45S	17°16'31.27E	Erven
463	HONDEKLIP BAY	247	0	30°19'10.43S	17°16'32.05E	Erven
464	HONDEKLIP BAY	257	0	30°19'8.21S	17°16'28.49E	Erven
465	HONDEKLIP BAY	271	0	30°19'2.13S	17°16'49.28E	Erven
466	HONDEKLIP BAY	272	0	30°19'2.87S	17°16'49.92E	Erven
467	HONDEKLIP BAY	300	0	30°19'5.45S	17°16'55.01E	Erven
468	HONDEKLIP BAY	310	0	30°18'57.14S	17°16'55.23E	Erven
469	HONDEKLIP BAY	313	0	30°18'56.31S	17°16'56.48E	Erven
470	HONDEKLIP BAY	93	0	30°19'6.64S	17°16'44.42E	Erven
471	HONDEKLIP BAY	316	0	30°18'55.48S	17°16'57.75E	Erven
472	HONDEKLIP BAY	342	0	30°18'59.19S	17°16'57.03E	Erven
473	HONDEKLIP	346	0	30°18'58.09S	17°16'58.7E	Erven

	BAY					
474	HONDEKLIP BAY	352	0	30°18'59.24S	17°16'59.05E	Erven
475	HONDEKLIP BAY	360	0	30°19'1.44S	17°16'55.71E	Erven
476	HONDEKLIP BAY	362	0	30°19'1.99S	17°16'54.88E	Erven
477	HONDEKLIP BAY	363	0	30°19'2.27S	17°16'54.46E	Erven
478	HONDEKLIP BAY	366	0	30°19'2.9S	17°16'56.33E	Erven
479	HONDEKLIP BAY	371	0	30°19'1.52S	17°16'58.42E	Erven
480	HONDEKLIP BAY	391	0	30°19'3.77S	17°16'57.1E	Erven
481	HONDEKLIP BAY	411	0	30°18'50.6S	17°16'40.7E	Erven
482	HONDEKLIP BAY	415	0	30°18'52.89S	17°16'41.26E	Erven
483	HONDEKLIP BAY	422	0	30°18'49.74S	17°16'43.33E	Erven
484	HONDEKLIP BAY	441	0	30°18'46.35S	17°16'47.12E	Erven
485	HONDEKLIP BAY	445	0	30°18'48.64S	17°16'47.69E	Erven
486	HONDEKLIP BAY	450	0	30°18'44.32S	17°16'48.86E	Erven
487	HONDEKLIP BAY	464	0	30°18'59.73S	17°16'37.4E	Erven
488	HONDEKLIP BAY	468	0	30°19'0.35S	17°16'38.81E	Erven
489	HONDEKLIP BAY	630	0	30°18'51.37S	17°16'34.11E	Erven
490	HONDEKLIP BAY	631	0	30°18'51.99S	17°16'34.51E	Erven
491	HONDEKLIP BAY	637	0	30°18'50.87S	17°16'37.61E	Erven
492	HONDEKLIP BAY	659	0	30°18'48.01S	17°16'40.57E	Erven
493	HONDEKLIP BAY	660	0	30°18'47.38S	17°16'40.17E	Erven
494	HONDEKLIP BAY	661	0	30°18'46.76S	17°16'39.78E	Erven
495	HONDEKLIP BAY	664	0	30°18'44.74S	17°16'42.85E	Erven
496	HONDEKLIP BAY	675	0	30°18'43.96S	17°16'45.4E	Erven
497	HONDEKLIP BAY	676	0	30°18'44.58S	17°16'45.79E	Erven
498	HONDEKLIP BAY	692	0	30°18'41.87S	17°16'45.85E	Erven
499	HONDEKLIP BAY	703	0	30°18'58.23S	17°16'41.07E	Erven

Development footprint¹ vertices:

¹ “development footprint”, means the area within the site on which the development will take place and includes all ancillary developments for example roads, power lines, boundary walls, paving etc. which require vegetation clearance or which will be disturbed and for which the application has been submitted.

No development footprint(s) specified.

Wind and Solar developments with an approved Environmental Authorisation or applications under consideration within 30 km of the proposed area

No nearby wind or solar developments found.

Environmental Management Frameworks relevant to the application

No intersections with EMF areas found.

Environmental screening results and assessment outcomes

The following sections contain a summary of any development incentives, restrictions, exclusions or prohibitions that apply to the proposed development site as well as the most environmental sensitive features on the site based on the site sensitivity screening results for the application classification that was selected. The application classification selected for this report is:

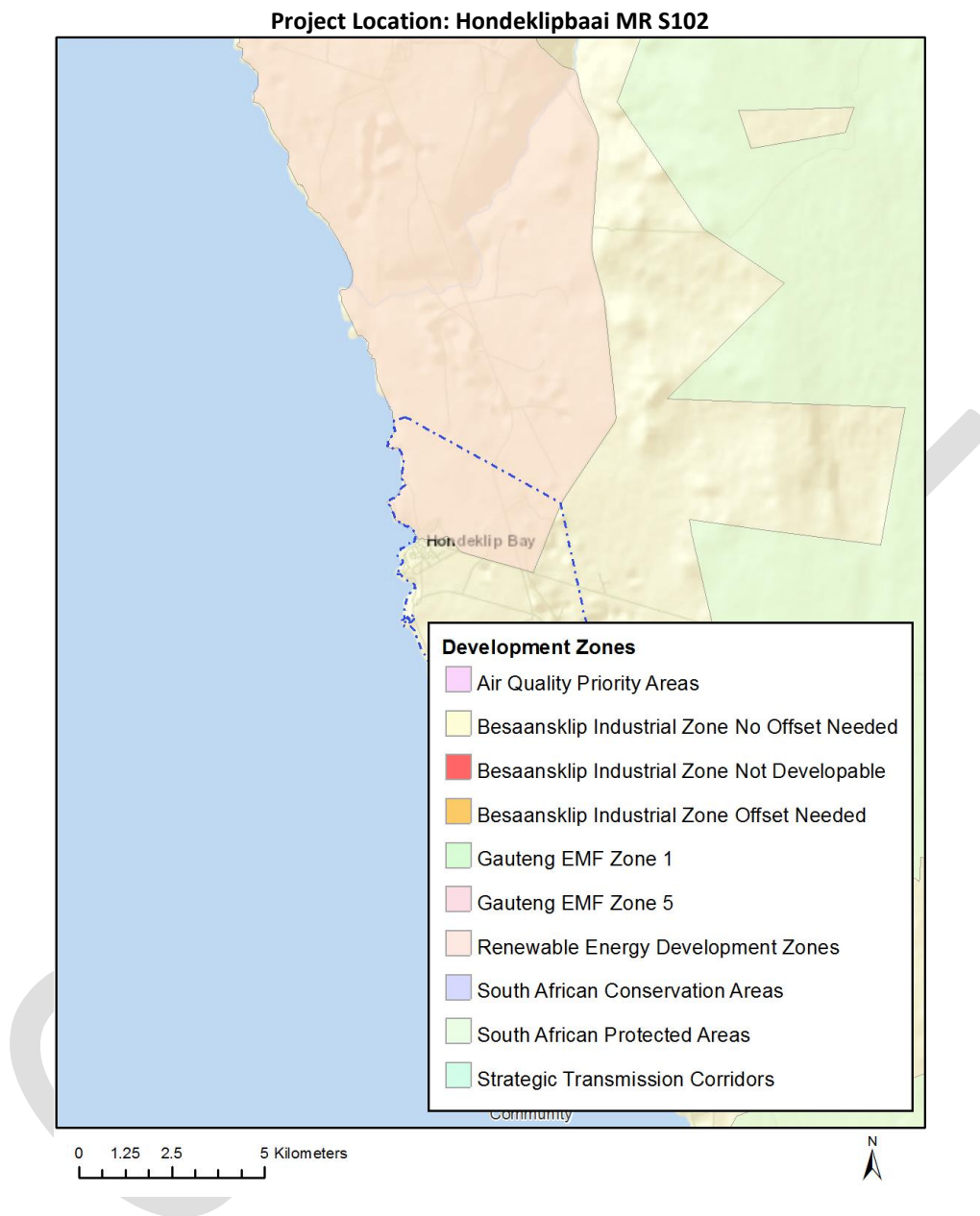
Mining | Mining Right.

Relevant development incentives, restrictions, exclusions or prohibitions

The following development incentives, restrictions, exclusions or prohibitions and their implications that apply to this site are indicated below.

Incentive, restriction or prohibition	Implication
Renewable energy development zones 8-Springbok	https://screening.environment.gov.za/ScreeningDownloads/DevelopmentZones/GN114of16February2018.pdf

Map indicating proposed development footprint within applicable development incentive, restriction, exclusion or prohibition zones



Proposed Development Area Environmental Sensitivity

The following summary of the development site environmental sensitivities is identified. Only the highest environmental sensitivity is indicated. The footprint environmental sensitivities for the proposed development footprint as identified, are indicative only and must be verified on site by a suitably qualified person before the specialist assessments identified below can be confirmed.

Theme	Very High sensitivity	High sensitivity	Medium sensitivity	Low sensitivity
Agriculture Theme			X	
Animal Species Theme			X	

Aquatic Biodiversity Theme				X
Archaeological and Cultural Heritage Theme	X			
Civil Aviation Theme		X		
Defence Theme				X
Paleontology Theme	X			
Plant Species Theme			X	
Terrestrial Biodiversity Theme	X			

Specialist assessments identified

Based on the selected classification, and the environmental sensitivities of the proposed development footprint, the following list of specialist assessments have been identified for inclusion in the assessment report. It is the responsibility of the EAP to confirm this list and to motivate in the assessment report, the reason for not including any of the identified specialist study including the provision of photographic evidence of the site situation.

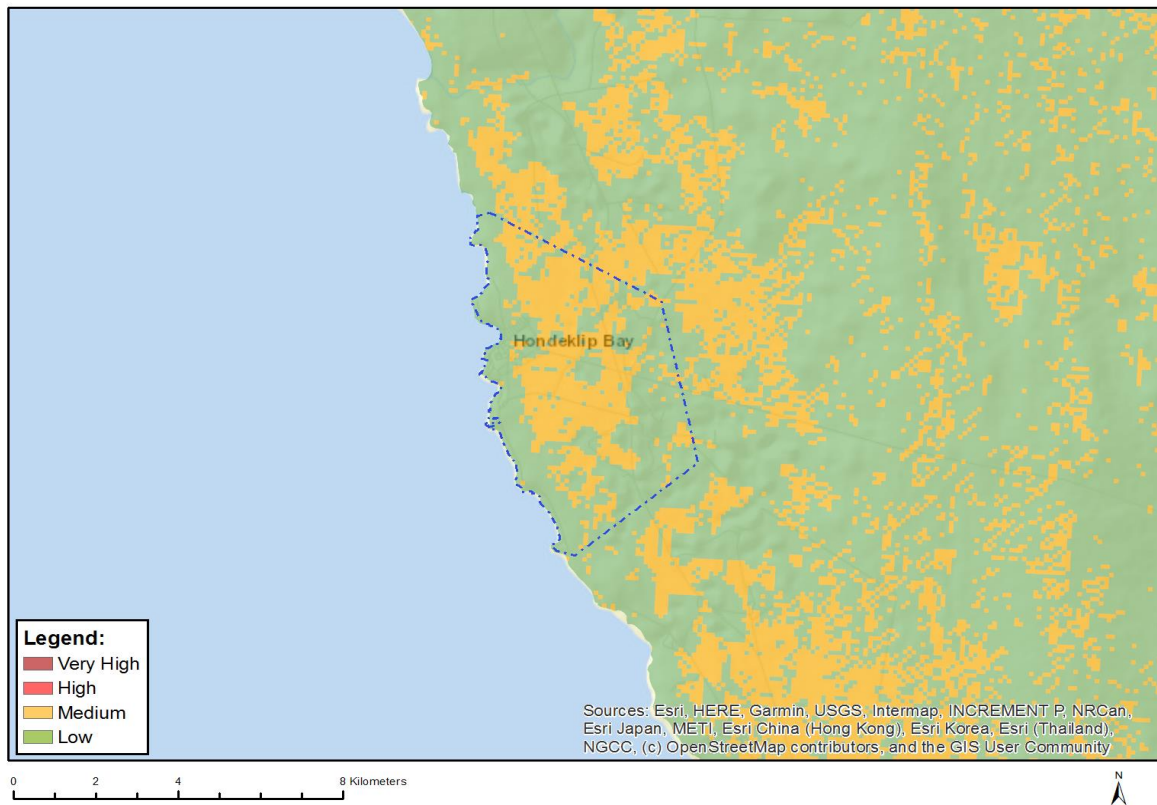
N o	Specialist assessment	Assessment Protocol
1	Agricultural Impact Assessment	https://screening.environment.gov.za/ScreeningDownloads/AssessmentProtocols/Gazetted_General_Agriculture_Assessment_Protocols.pdf
2	Landscape/Visual Impact Assessment	https://screening.environment.gov.za/ScreeningDownloads/AssessmentProtocols/Gazetted_General_Requirement_Assessment_Protocols.pdf
3	Archaeological and Cultural Heritage Impact Assessment	https://screening.environment.gov.za/ScreeningDownloads/AssessmentProtocols/Gazetted_General_Requirement_Assessment_Protocols.pdf
4	Palaeontology Impact Assessment	https://screening.environment.gov.za/ScreeningDownloads/AssessmentProtocols/Gazetted_General_Requirement_Assessment_Protocols.pdf
5	Terrestrial Biodiversity Impact Assessment	https://screening.environment.gov.za/ScreeningDownloads/AssessmentProtocols/Gazetted_Terrestrial_Biodiversity_Assessment_Protocols.pdf
6	Aquatic Biodiversity Impact Assessment	https://screening.environment.gov.za/ScreeningDownloads/AssessmentProtocols/Gazetted_Aquatic_Biodiversity_Assessment_Protocols.pdf
7	Hydrology	https://screening.environment.gov.za/ScreeningDownloads/AssessmentProtocols

	Assessment	/Gazetted General Requirement Assessment Protocols.pdf
8	Noise Impact Assessment	https://screening.environment.gov.za/ScreeningDownloads/AssessmentProtocols/Gazetted Noise Impacts Assessment Protocol.pdf
9	Radioactivity Impact Assessment	https://screening.environment.gov.za/ScreeningDownloads/AssessmentProtocols/Gazetted General Requirement Assessment Protocols.pdf
10	Traffic Impact Assessment	https://screening.environment.gov.za/ScreeningDownloads/AssessmentProtocols/Gazetted General Requirement Assessment Protocols.pdf
11	Geotechnical Assessment	https://screening.environment.gov.za/ScreeningDownloads/AssessmentProtocols/Gazetted General Requirement Assessment Protocols.pdf
12	Climate Impact Assessment	https://screening.environment.gov.za/ScreeningDownloads/AssessmentProtocols/Gazetted General Requirement Assessment Protocols.pdf
13	Health Impact Assessment	https://screening.environment.gov.za/ScreeningDownloads/AssessmentProtocols/Gazetted General Requirement Assessment Protocols.pdf
14	Socio-Economic Assessment	https://screening.environment.gov.za/ScreeningDownloads/AssessmentProtocols/Gazetted General Requirement Assessment Protocols.pdf
15	Ambient Air Quality Impact Assessment	https://screening.environment.gov.za/ScreeningDownloads/AssessmentProtocols/Gazetted General Requirement Assessment Protocols.pdf
16	Seismicity Assessment	https://screening.environment.gov.za/ScreeningDownloads/AssessmentProtocols/Gazetted General Requirement Assessment Protocols.pdf
17	Plant Species Assessment	https://screening.environment.gov.za/ScreeningDownloads/AssessmentProtocols/Gazetted Plant Species Assessment Protocols.pdf
18	Animal Species Assessment	https://screening.environment.gov.za/ScreeningDownloads/AssessmentProtocols/Gazetted Animal Species Assessment Protocols.pdf

Results of the environmental sensitivity of the proposed area.

The following section represents the results of the screening for environmental sensitivity of the proposed site for relevant environmental themes associated with the project classification. It is the duty of the EAP to ensure that the environmental themes provided by the screening tool are comprehensive and complete for the project. Refer to the disclaimer.

MAP OF RELATIVE AGRICULTURE THEME SENSITIVITY

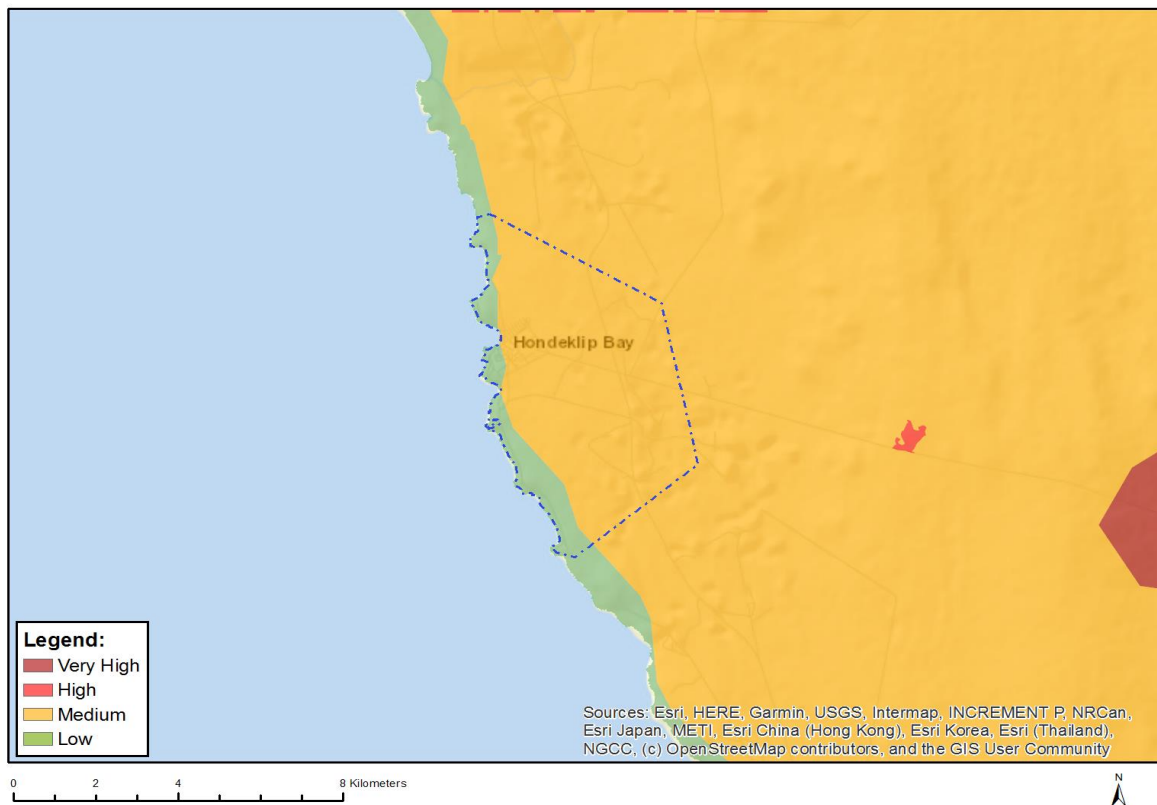


Very High sensitivity	High sensitivity	Medium sensitivity	Low sensitivity
		X	

Sensitivity Features:

Sensitivity	Feature(s)
Low	Land capability;01. Very low/02. Very low/03. Low-Very low/04. Low-Very low/05. Low
Medium	Land capability;06. Low-Moderate/07. Low-Moderate/08. Moderate

MAP OF RELATIVE ANIMAL SPECIES THEME SENSITIVITY



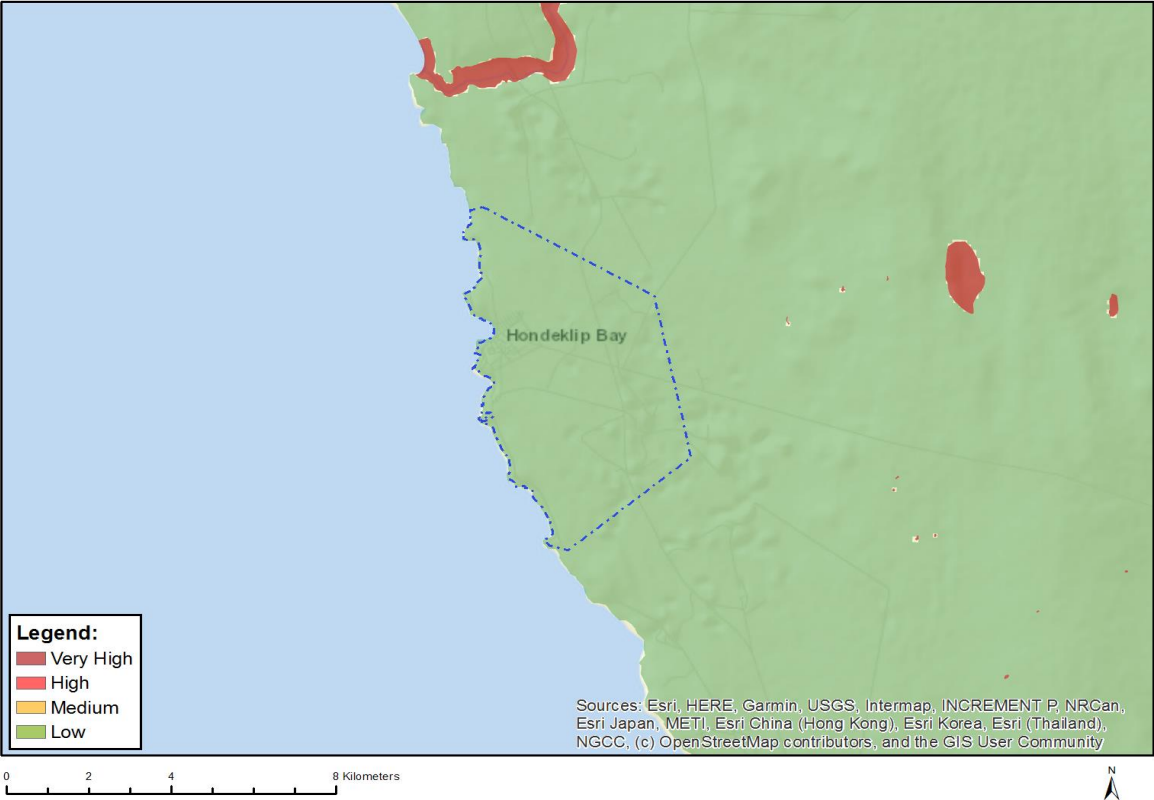
Where only a sensitive plant unique number or sensitive animal unique number is provided in the screening report and an assessment is required, the environmental assessment practitioner (EAP) or specialist is required to email SANBI at aiadatarequests@sanbi.org.za listing all sensitive species with their unique identifiers for which information is required. The name has been withheld as the species may be prone to illegal harvesting and must be protected. SANBI will release the actual species name after the details of the EAP or specialist have been documented.

Very High sensitivity	High sensitivity	Medium sensitivity	Low sensitivity
		X	

Sensitivity Features:

Sensitivity	Feature(s)
Low	Low sensitivity
Medium	Sensitive species 4
Medium	Invertebrate-Brinckiella mauerbergerorum
Medium	Aves-Circus maurus

MAP OF RELATIVE AQUATIC BIODIVERSITY THEME SENSITIVITY

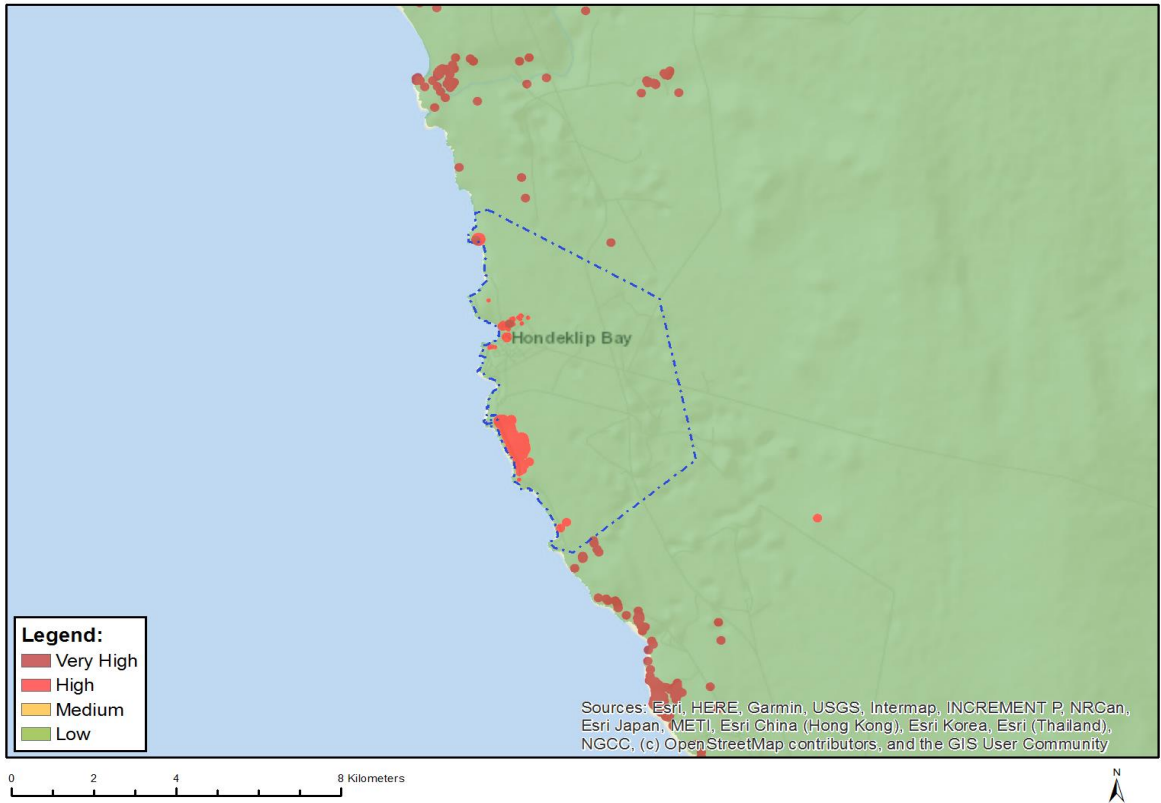


Very High sensitivity	High sensitivity	Medium sensitivity	Low sensitivity
			X

Sensitivity Features:

Sensitivity	Feature(s)
Low	Low sensitivity

MAP OF RELATIVE ARCHAEOLOGICAL AND CULTURAL HERITAGE THEME SENSITIVITY

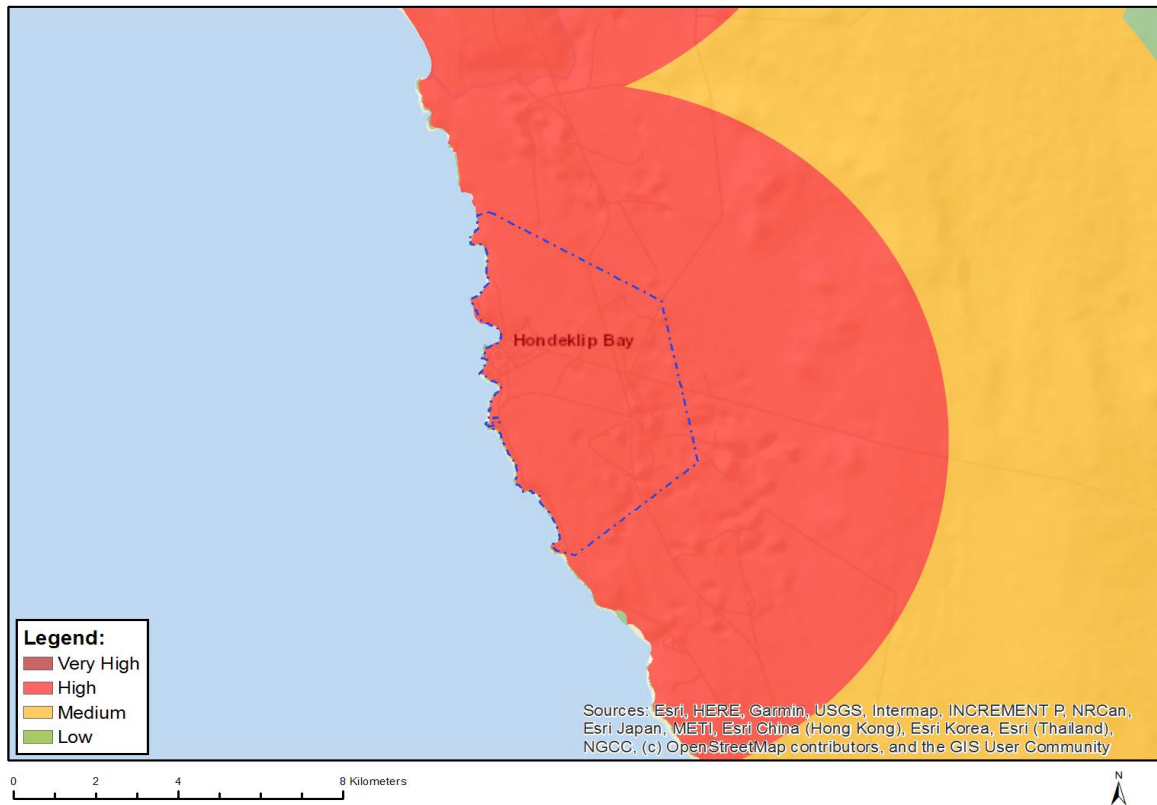


Very High sensitivity	High sensitivity	Medium sensitivity	Low sensitivity
X			

Sensitivity Features:

Sensitivity	Feature(s)
High	Within 150m of a Grade IIIa Heritage site
High	Within 100m of a Grade IIIb Heritage site
High	Within 50m of a Grade IIIc Heritage site
Low	Low sensitivity
Very High	Within 100m of an Ungraded Heritage site

MAP OF RELATIVE CIVIL AVIATION THEME SENSITIVITY

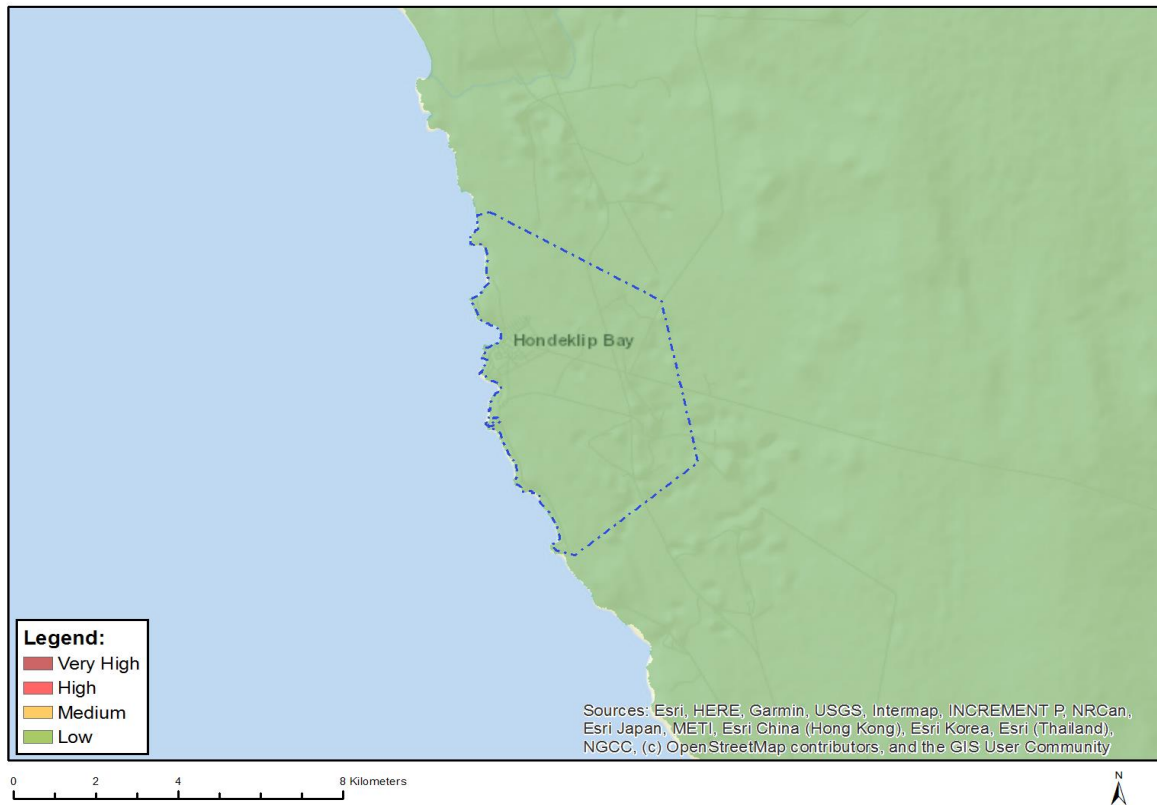


Very High sensitivity	High sensitivity	Medium sensitivity	Low sensitivity
	X		

Sensitivity Features:

Sensitivity	Feature(s)
High	Within 8 km of other civil aviation aerodrome
Low	Low sensitivity

MAP OF RELATIVE DEFENCE THEME SENSITIVITY

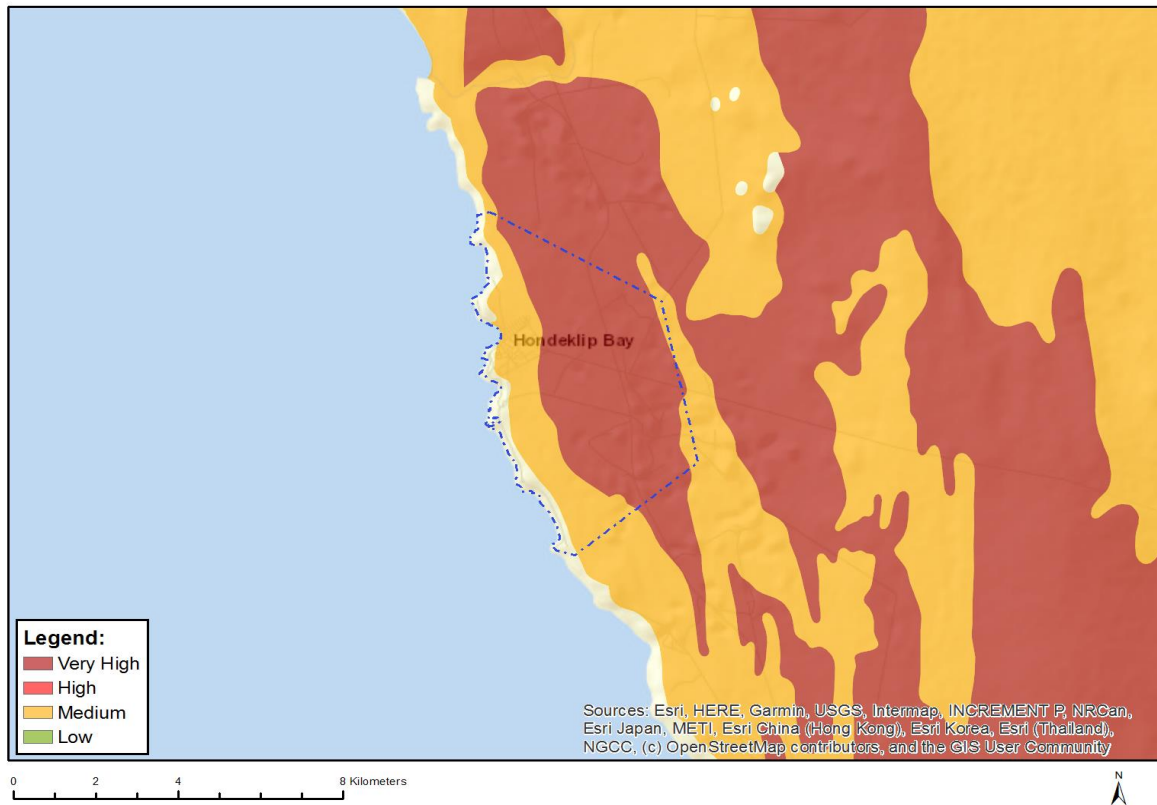


Very High sensitivity	High sensitivity	Medium sensitivity	Low sensitivity
			X

Sensitivity Features:

Sensitivity	Feature(s)
Low	Low Sensitivity

MAP OF RELATIVE PALEONTOLOGY THEME SENSITIVITY

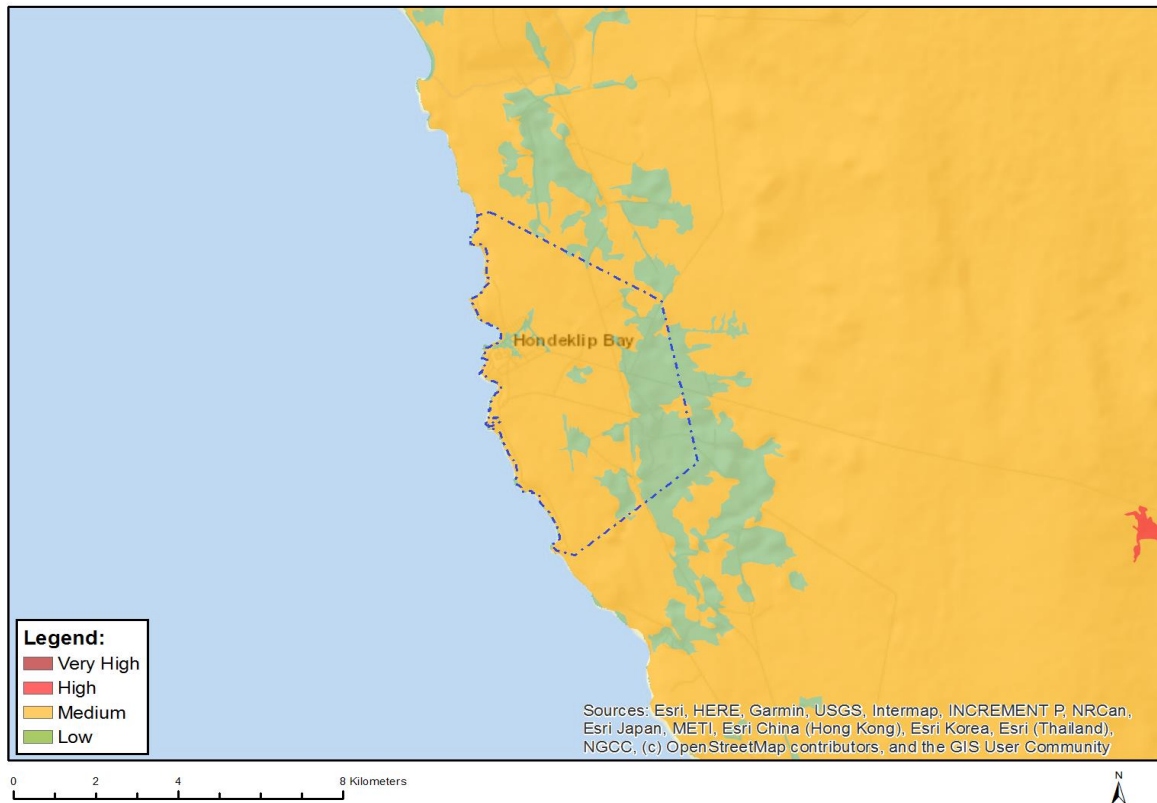


Very High sensitivity	High sensitivity	Medium sensitivity	Low sensitivity
X			

Sensitivity Features:

Sensitivity	Feature(s)
Medium	Features with a Medium paleontological sensitivity
Very High	Features with a Very High paleontological sensitivity

MAP OF RELATIVE PLANT SPECIES THEME SENSITIVITY



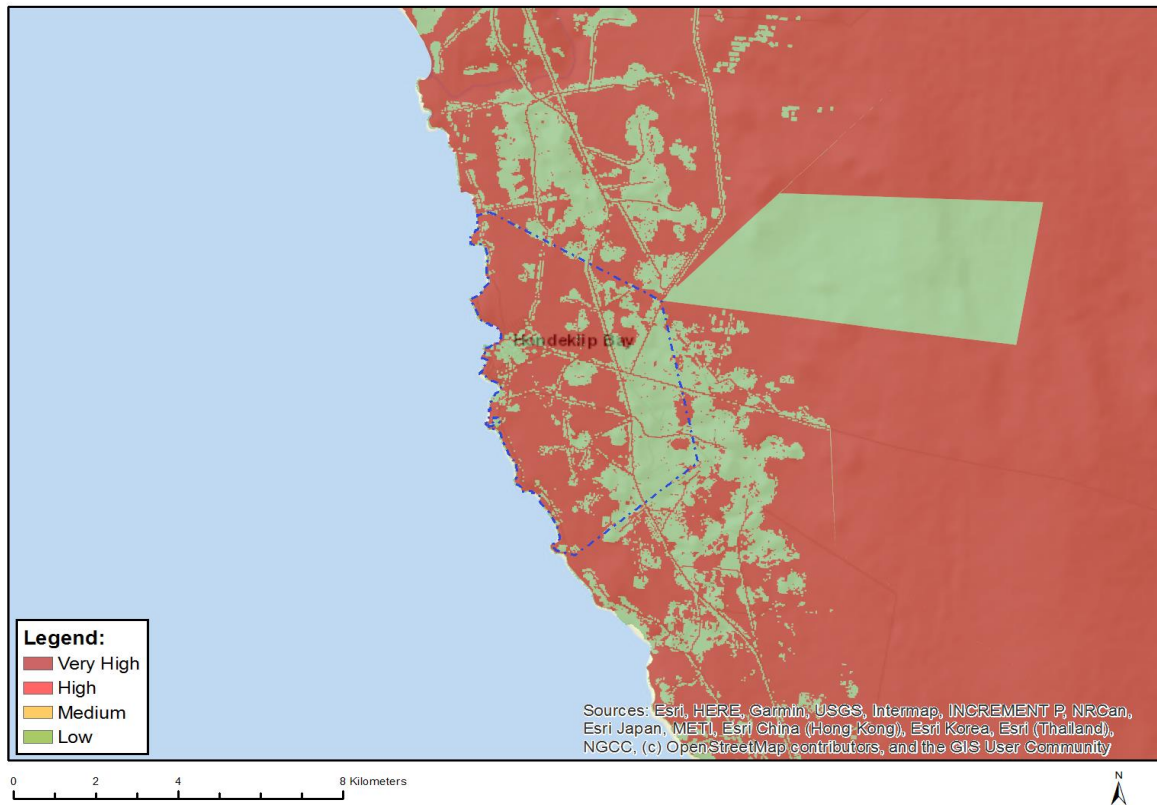
Where only a sensitive plant unique number or sensitive animal unique number is provided in the screening report and an assessment is required, the environmental assessment practitioner (EAP) or specialist is required to email SANBI at aiadatarequests@sanbi.org.za listing all sensitive species with their unique identifiers for which information is required. The name has been withheld as the species may be prone to illegal harvesting and must be protected. SANBI will release the actual species name after the details of the EAP or specialist have been documented.

Very High sensitivity	High sensitivity	Medium sensitivity	Low sensitivity
		X	

Sensitivity Features:

Sensitivity	Feature(s)
Low	Low Sensitivity
Medium	Wooleya farinosa
Medium	Jordaaniella clavifolia
Medium	Manulea cinerea
Medium	Tetragonia pillansii
Medium	Leucoptera nodosa
Medium	Oncosiphon schlechteri
Medium	Sensitive species 1156
Medium	Argyrobium velutinum
Medium	Helichrysum dunense

MAP OF RELATIVE TERRESTRIAL BIODIVERSITY THEME SENSITIVITY



Very High sensitivity	High sensitivity	Medium sensitivity	Low sensitivity
X			

Sensitivity Features:

Sensitivity	Feature(s)
Low	Low Sensitivity
Very High	Critical Biodiversity Area 1
Very High	Critical Biodiversity Area 2