



**PROPOSED DEVELOPMENT OF THE GROMIS-NAMA-AGGENEIS  
400 KV POWER LINE AND ASSOCIATED INFRASTRUCTURE FOR  
THE IPP INTEGRATION WITHIN THE NORTHERN CAPE PROVINCE**

**Mapping Process and Explanatory Notes**

April 2020

Prepared for:

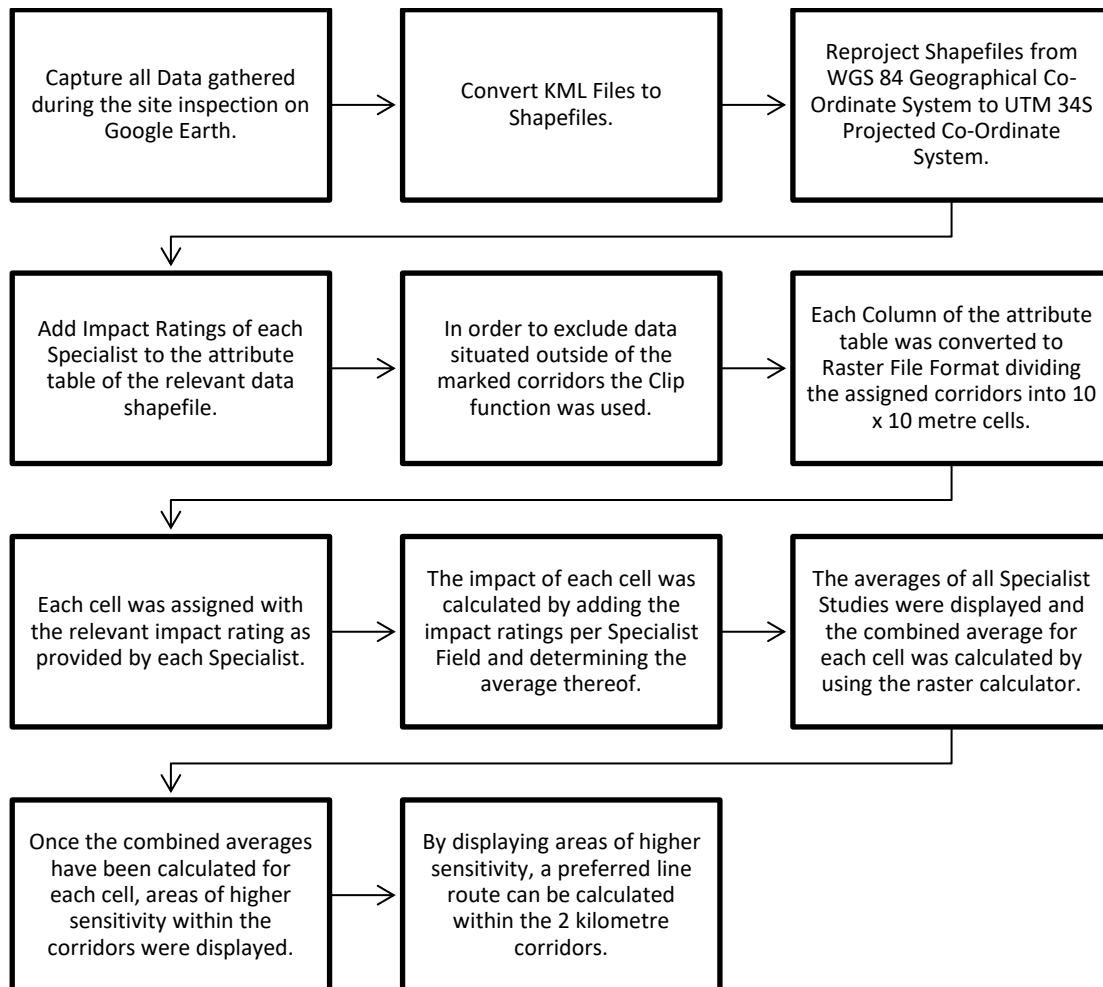


Prepared by:

Mr Christoff du Plessis  
christoff@enviroworks.co.za

Today's Impact | Tomorrow's Legacy

## PROCESS FOLLOWED FOR THE COMPILATION OF MAPS



## EXPLANATORY NOTES OF THE MAPS

The Figures below provide a visual aid of the final product once the above listed process was followed and provide explanatory notes on how the maps should be read. The maps are in the following order:

Figure 1 – One impact of a Specialist is displayed;

Figure 2 – The combined impact rating of all impacts of a Specialist is displayed; and,

Figure 3 – The combined impact of all Specialist Studies is displayed.

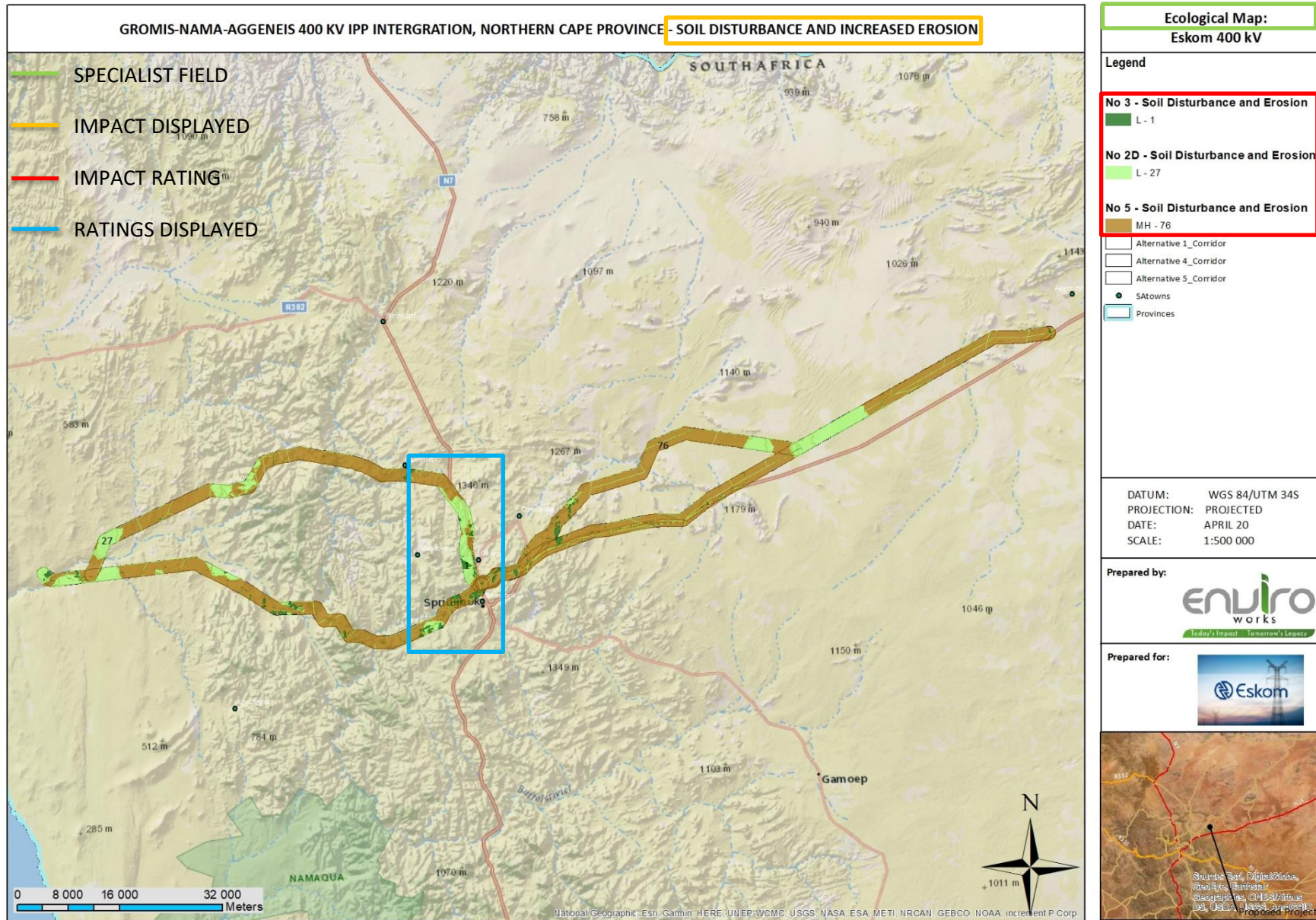


Figure 1: Specialist Impact Map – Explanatory Notes.

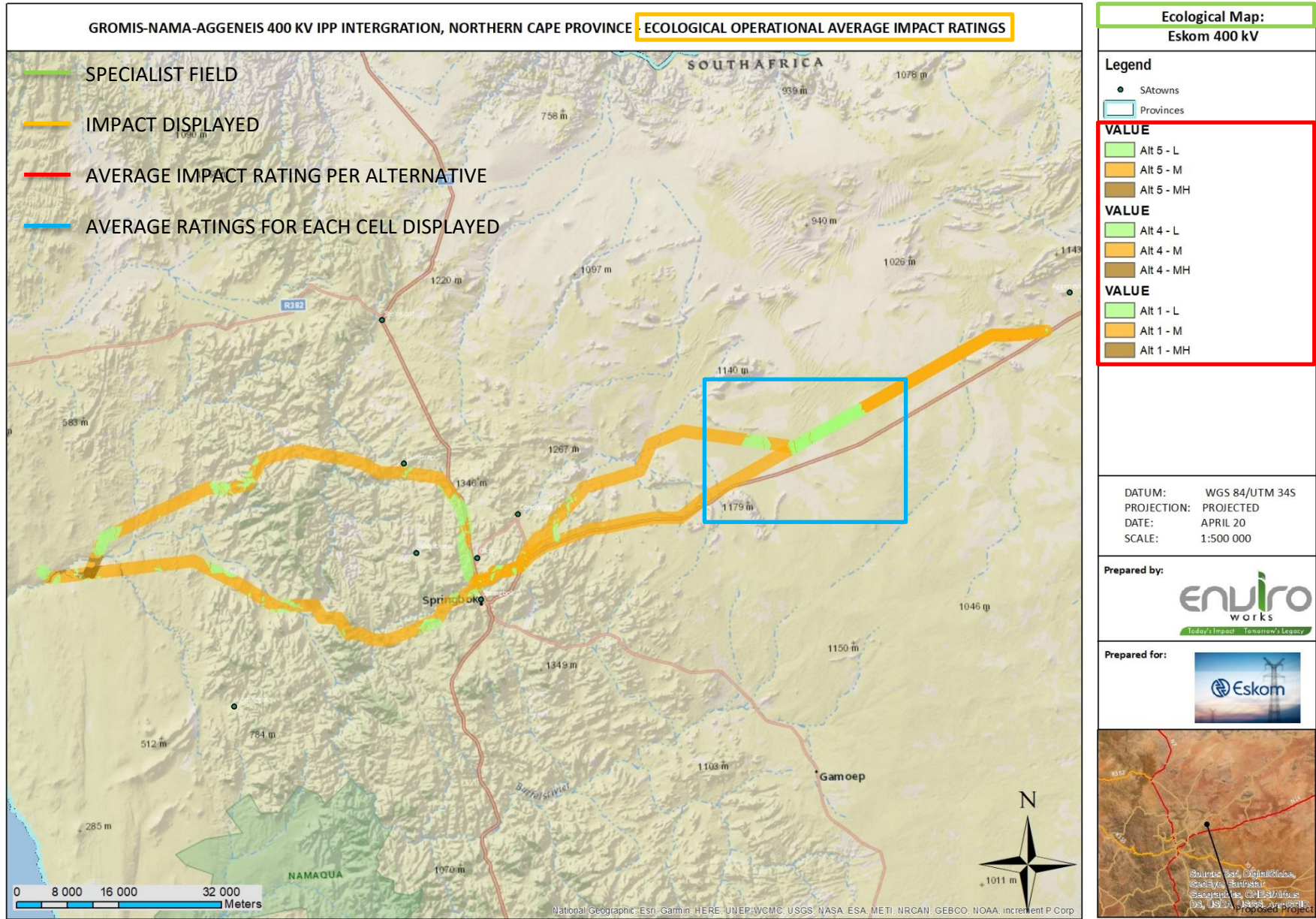


Figure 2: Average Specialist Map - Explanatory Map

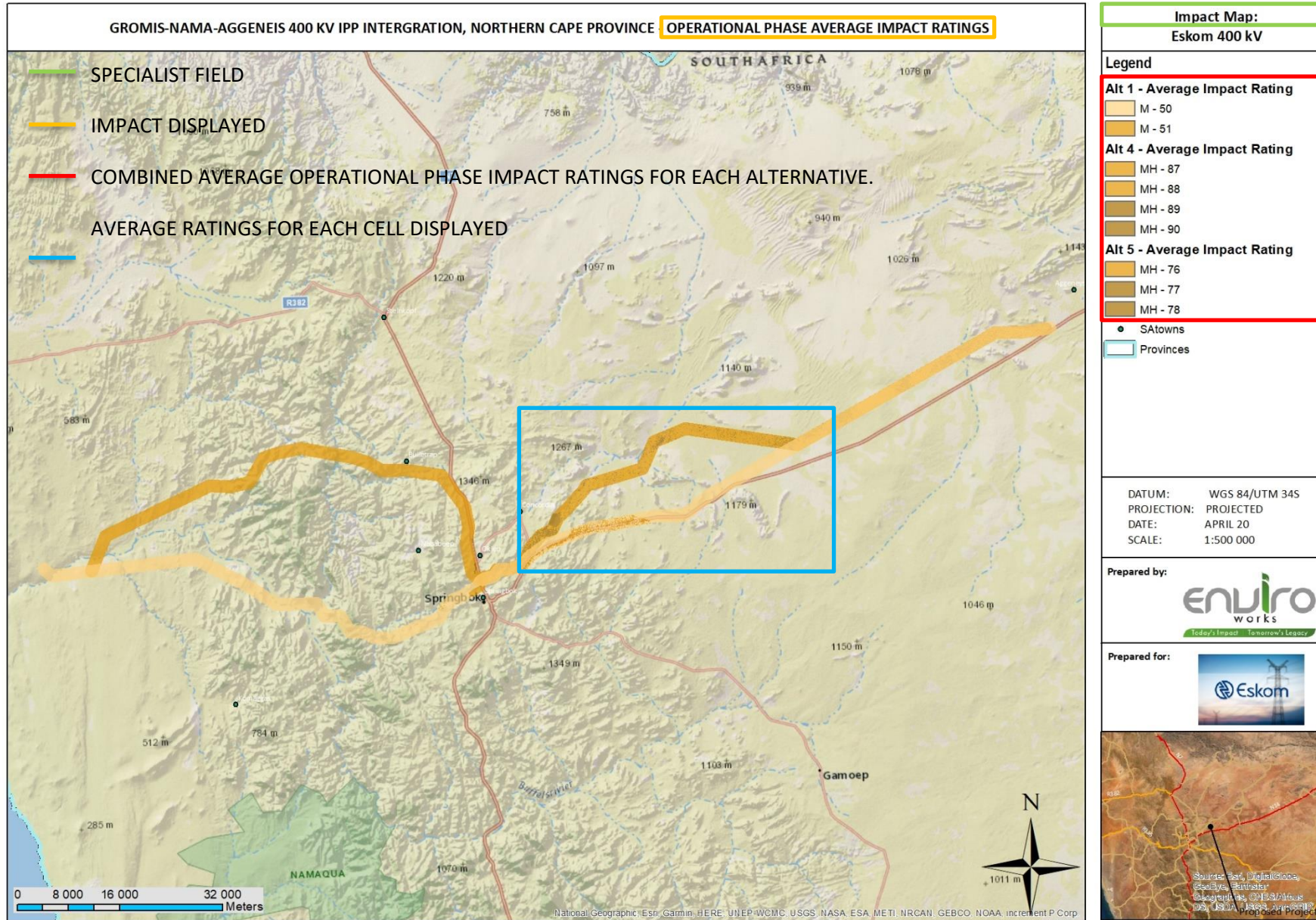


Figure 3: Combined Impact Map - Explanatory Map