

**PROPOSED
GRID CONNECTION FOR
KAREE WIND ENERGY FACILITY
NEAR TOUWS RIVER,
WESTERN CAPE PROVINCE
SENSITIVITY LAYOUT**

Legend

- Existing Substation
- Karee WEF Application Site
- Proposed Grid Connection**
- Powerline Assessment Corridor Option 1
- Powerline Assessment Corridor Option 2
- Proposed Substation Site Alternatives
- Environmental Sensitivities (No-Go)**
- Aquatic Sensitivity
- Archaeological Sensitivity
- Avifaunal Sensitivity (Line Marking Required)
- Bat Sensitivity
- Cultural Sensitivity
- Terrestrial Sensitivity
- Limited Development Zones**
- Visual Sensitivity

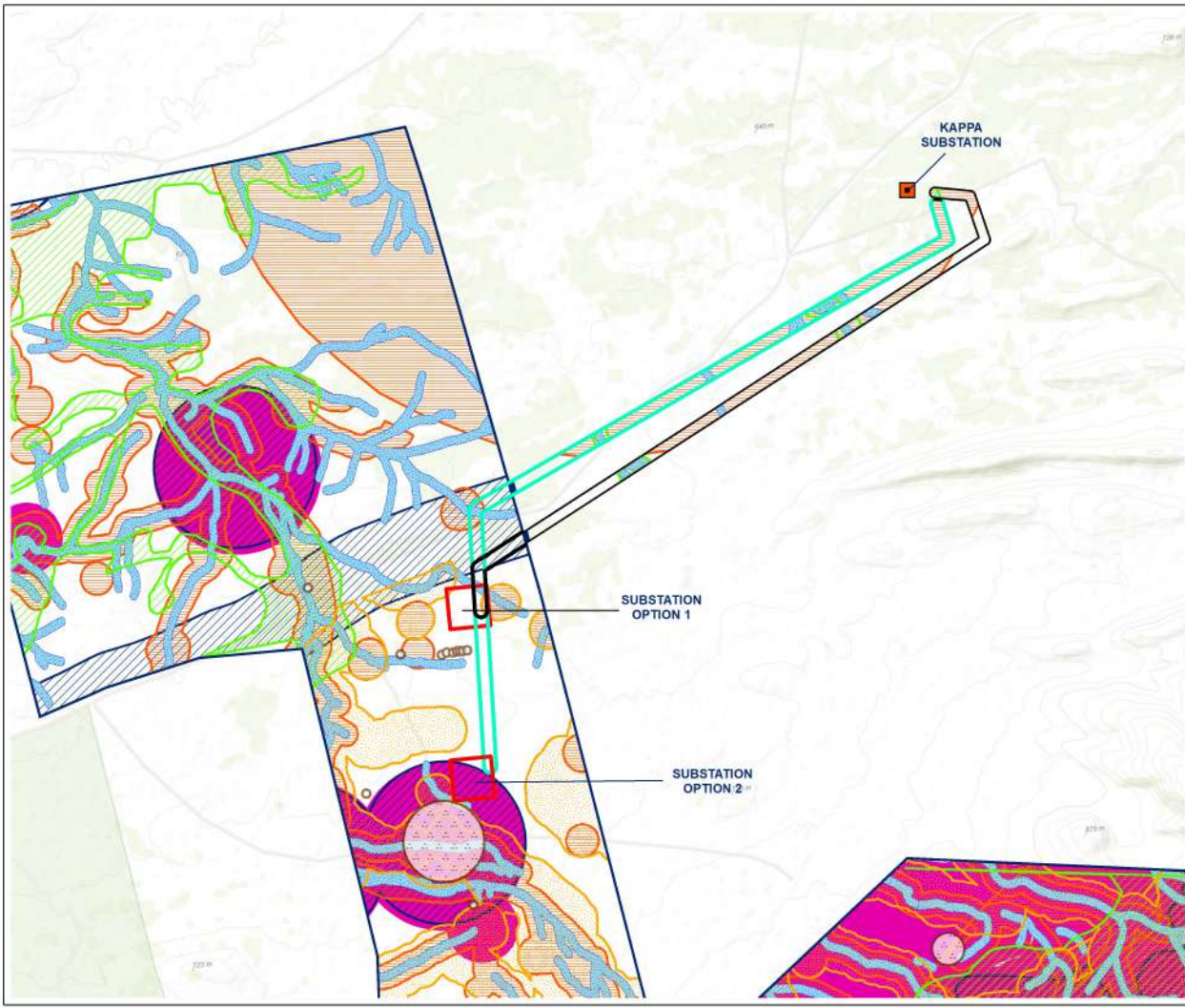
Source:
NGI, 2014








Project No 15168	Prepared By SB	Date 02/12/2022
Map Ref No 15168	Revision 0	Date

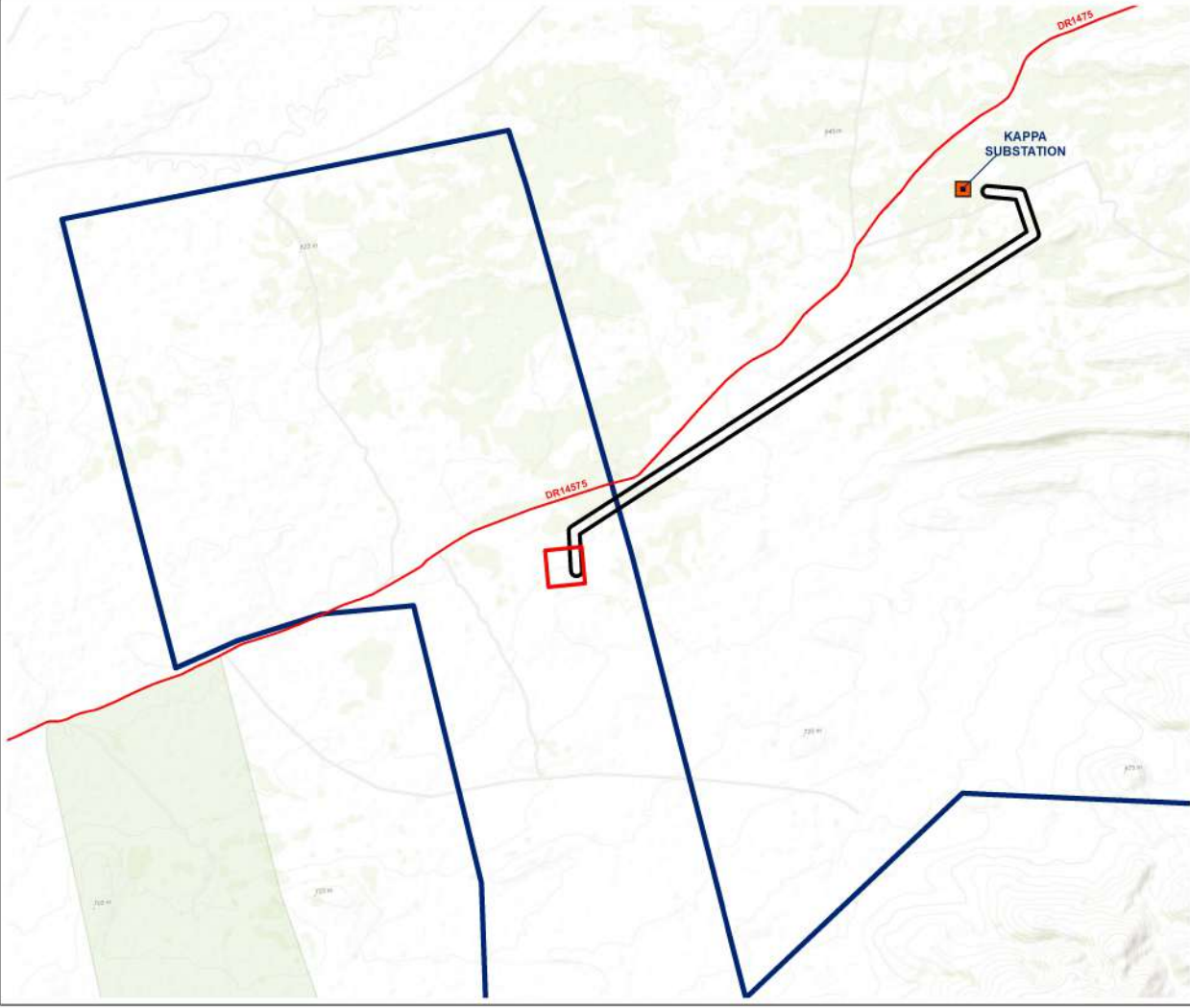
*COPYRIGHT IS VESTED IN SIVEST IN TERMS OF THE COPYRIGHT ACT ACT 96 OF 1978 AND NO USE OR REPRODUCTION OR DUPLICATION THEREOF MAY OCCUR WITHOUT THE WRITTEN CONSENT OF THE AUTHORITY

THIS MAP HAS BEEN PREPARED UNDER THE CONTROLS ESTABLISHED BY THE SIVEST QUALITY MANAGEMENT SYSTEM WHICH HAS BEEN CERTIFIED ISO 9001:2015 COMPLIANT



**PROPOSED
CONSTRUCTION OF THE
KAREE WIND ENERGY FACILITY
NEAR TOUWS RIVER,
WESTERN CAPE PROVINCE
PROPOSED LAYOUT**

- Legend**
-  Existing Substation
 -  Secondary Roads
 -  Karee WEF Application Site
- Proposed WEF Components**
-  Powerline Assessment Corridor (Preferred Option)
 -  Proposed Substation (Preferred Option)



Source:
NGI, 2014



SIVEST

ENVIRONMENTAL DIVISION
4 PENCARROW CRESCENT
15 LINDSAY AVENUE, OPTIMA ESTATE
EDDIE
DURBAN, KZN
Phone: +27 31 281 1350
Fax: +27 31 281 1353
Email: info@sivest.co.za

Project No 16168	Prepared By SB	Date 05/12/2022
Map Ref No 16168	Revision 0	Date

*COPYRIGHT IS VESTED IN SIVEST IN TERMS OF THE COPYRIGHT ACT ACT 94 OF 1978 AND NO USE OR REPRODUCTION OR DUPLICATION THEREOF MAY OCCUR WITHOUT THE WRITTEN CONSENT OF THE AUTHOR.

THIS MAP HAS BEEN PREPARED UNDER THE CONTROLS ESTABLISHED BY THE SIVEST QUALITY MANAGEMENT SYSTEM WHICH HAS BEEN CERTIFIED ISO 9001:2015 COMPLIANT.

**PROPOSED
GRID CONNECTION FOR
KAREE WIND ENERGY FACILITY
NEAR TOUWS RIVER,
WESTERN CAPE PROVINCE
SENSITIVITY LAYOUT**

Legend

-  Existing Substation
-  Karee WEF Application Site
- Proposed Grid**
-  Powerline Assessment Corridor (Preferred Option)
-  Proposed Substation (Preferred Option)
- Environmental Sensitivities (No-Go)**
-  Aquatic Sensitivity
-  Archaeological Sensitivity
-  Avifaunal Sensitivity (Line Marking Required)
-  Bat Sensitivity
-  Cultural Sensitivity
-  Terrestrial Sensitivity
- Limited Development Zones**
-  Visual Sensitivity

Source:
NGI, 2014

 			 <small>ENVIRONMENTAL DIVISION 4 PENCARROW CRESCENT 16 LINDSAY AVENUE, OPTIMA ESTATE 7800 TEL: 021 521 1500 FAX: 021 521 1517 WWW.SIVEST.CO.ZA</small>
Project No 15168	Prepared By SB	Date 05/12/2022	
Map Ref No 15168	Revision 0	Date	

COPYRIGHT IS VESTED IN SIVEST IN TERMS OF THE COPYRIGHT ACT ACT 94 OF 1978 AND NO USE OR REPRODUCTION OR DUPLICATION THEREOF MAY OCCUR WITHOUT THE WRITTEN CONSENT OF THE AUTHOR

THIS MAP HAS BEEN PREPARED UNDER THE CONTROLS ESTABLISHED BY THE SIVEST QUALITY MANAGEMENT SYSTEM WHICH HAS BEEN CERTIFIED ISO 9001:2015 COMPLIANT

