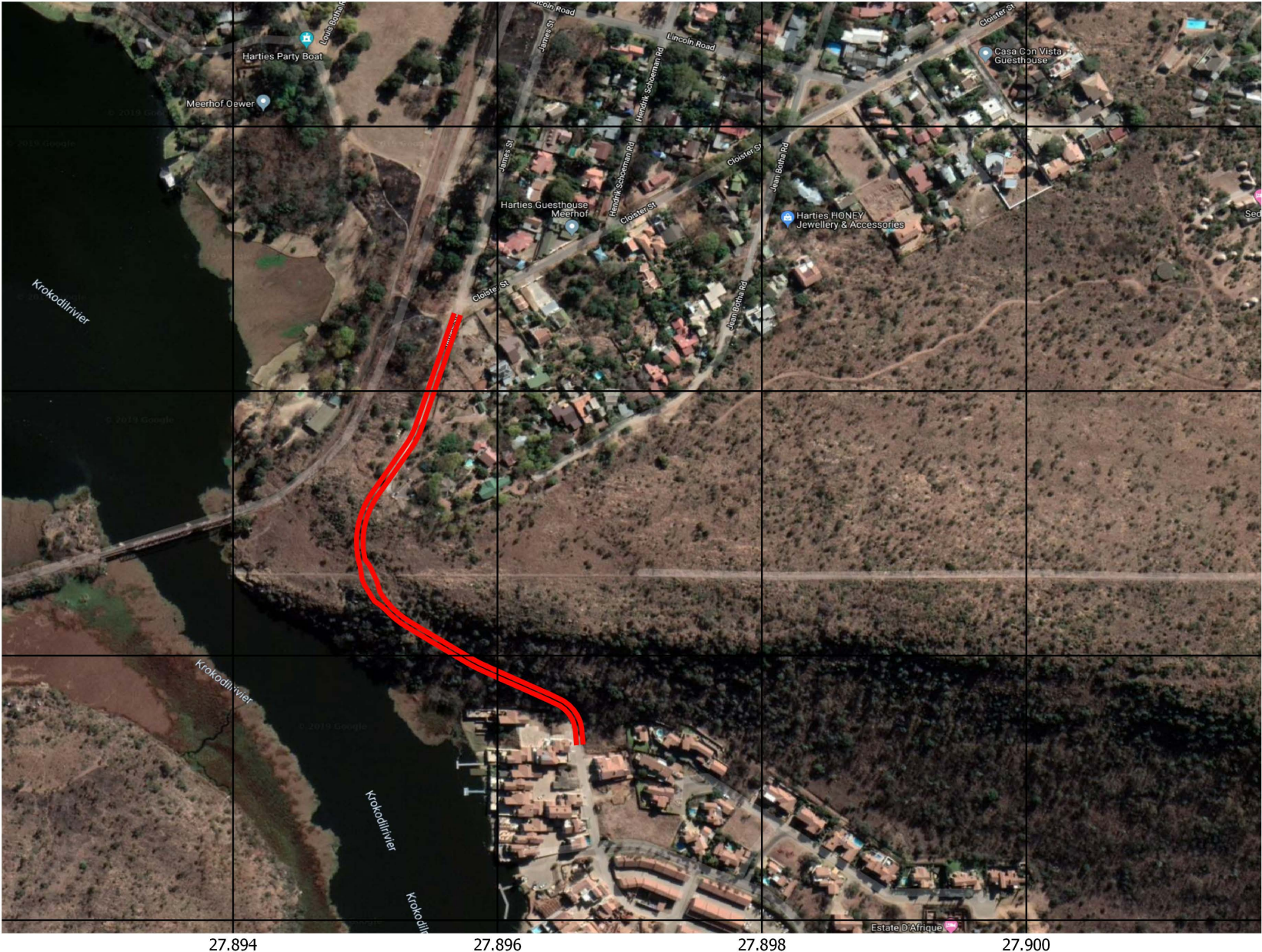


ESTATE d`AFRIQUE ACCESS ROAD CONSTRUCTION LOCALITY MAP



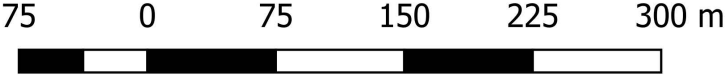
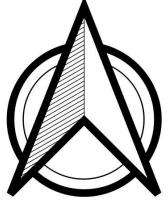
LEGEND

— Hybrid

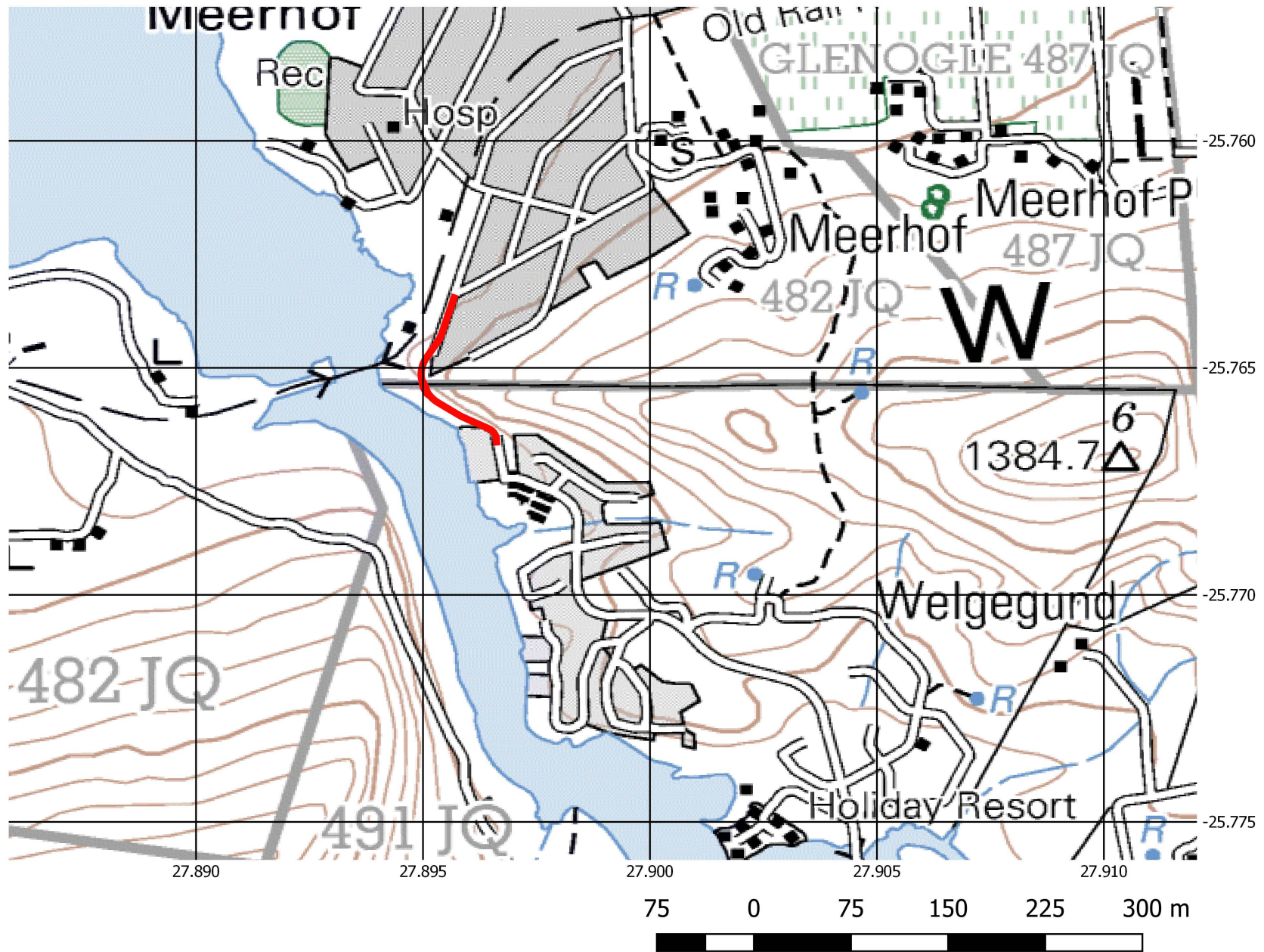
— Estate d'Afrique Road

WSG82
CODE: 4326
Created for: Estate d'Afrique

Created by: Prescali Environmental Consultant
Date: 14 November 2019



ESTATE d`AFRIQUE ACCESS ROAD CONSTRUCTION LOCALITY MAP



LEGEND

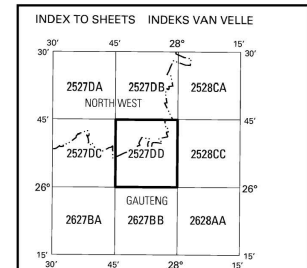
— Estate d`Afrique Road
 2527DD_2010_ED6_GEO

WSG82
 CODE: 4326
 Created for: Estate d`Afrique

Created by: Prescali Environmental
 Consultant
 Date: 14 November 2019



REFERENCE	VERKLARING
National Freeway; National Route	Nasionale Deurpad; Nasionale Roete
Arterial Route	Hoofverkeersroete
Main Road	Hoopad
Secondary Road; Bench Mark	Sekondêre Pad; Hoogtemark
Other Road; Bridge	Ander Pad; Brug
Track and Hiking Trail	Downwe Pad en Voetslaanpad
Railway; Station or Siding	Spoorweg; Stasie of Sylyn
Other Railway; Tunnel	Ander Spoorweg; Tonnel
Embankment; Cutting	Opvulling; Daurgrawing
Power Line	Kraglyn
Built-up Area (High, Low Density)	Beboude Gebied (Hoë, Laë Digtheid)
Buildings; Ruin	Geboue; Murasie
Post Office; Police Station; Store	Poskantoor; Polisieostasie; Winkel
Place of Worship; School; Hotel	Plek van Aanbidding; Skool; Hotel
Fence; Wall	Draadheining; Muur
Windpump; Monument	Windpomp; Monument
Communication Tower	Kommunikasietoring
Mine Dump; Excavation	Mynhoop; Uitgraving
Trigonometrical Station; Marine Beacon	Peilbaken; Seevaartbaken
Lighthouse and Marine Light	Vuurtoring en Seevaartlig
Cemetery; Grave	Begraafplaas; Graf



REFERENCE	VERKLARING
International Boundary and Beacon	Internasionale Grens en Baken
Provincial Boundary	Provinsiale Grens
Protected Area	Bewarings Gebied
Perennial River	Standhoudende Rivier
Perennial Water	Standhoudende Water
Non-perennial River	Nie-standhoudende Rivier
Non-Perennial Water	Nie-standhoudende Water
Dry Water Course	Droë Loop
Dry Pan	Droë Pan
Marsh and Vlei	Moeras en Vlei
Pipeline (above ground)	Pyplyn (bo die grond)
Water Tower; Reservoir; Water Point	Watertoring; Reservoir; Waterpunt
Coastal Rocks	Kuslynrotse
Prominent Rock Outcrop	Prominente Klipbank
Erosion; Sand	Erosie; Sand
Woodland	Beboste Gebied
Cultivated Land	Bewerkte Land
Orchard or Vineyard	Boord of Wingerd
Recreation Ground	Ontspanningsterrein
Row of Trees	Rye Bome

