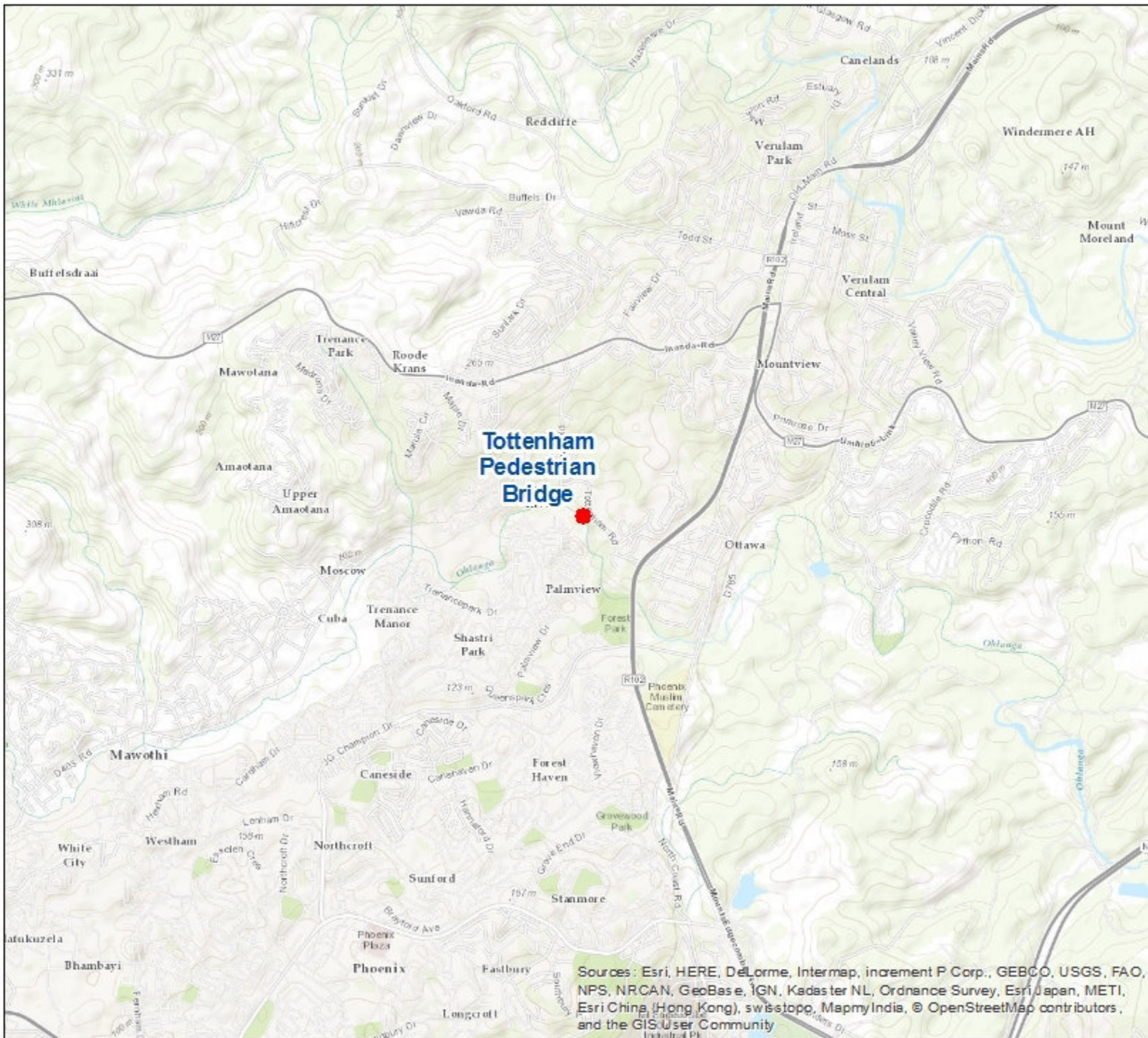


**APPENDIX 3: LAYOUT PLAN**

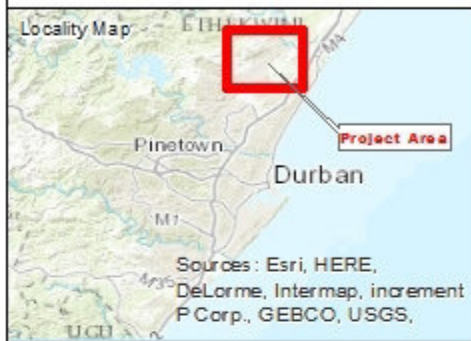


**Tottenham Pedestrian Bridge**

Sources: Esri, HERE, DeLorme, Intermap, increment P Corp., GEBCO, USGS, FAO, NPS, NRCAN, GeoBas e, IGN, Kadas ter NL, Ordnance Survey, Esri Japan, METI, Esri China (Hong Kong), swisstopo, MapmyIndia, © OpenStreetMap contributors, and the GIS User Community

# Tottenham Road Pedestrian Bridge

## LOCALITY PLAN

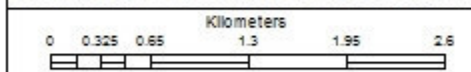


Sources: Esri, HERE, DeLorme, Intermap, increment P Corp., GEBCO, USGS.

## LEGEND

- Tottenham Road Pedestrian Bridge

Production Date: 19 October 2016  
 Coordinate System: PCS (Transverse Mercator LO 31; WGS84)



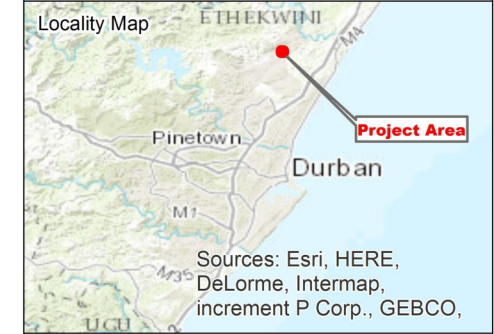
Compiled By:  Client: 

Designed and detailed under the controls established by our quality management system that meet the requirements of ISO 9001:2000 which has been independently certified by DEKRA Certification under certificate number 90900552.



# Tottenham Road Pedestrian Bridge

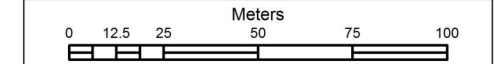
## SITE PLAN



- LEGEND**
- Tottenham Road Pedestrian Bridge
  - Rivers

**\*Note: Bridge depicted is not to scale or any design. For illustration purposes only.**

Production Date: 20 September 2016  
Coordinate System: PCS (Transverse Mercator LO31; WGS84)



Compiled By: Client:

**JG AFRIKA**  
EXPERIENCE QUALITY INTEGRITY

**ETHEKWINI MUNICIPALITY**

Designed and detailed under the controls established by our quality management system that meet the requirements of ISO 9001:2000 which has been independently certified by DEKRA Certification under certificate number 90906882.





# Tottenham Road Pedestrian Bridge

## SENSITIVITIES MAP



### LEGEND

-  EKZNW Transformed Land Cover
-  SANBI Threatened Ecosystems


Production Date: 29 August 2016  
 Coordinate System: PCS (Transverse Mercator LO 31; WGS84)



N  
 SCALE  
 1:2 000

Compiled By:  Client: 

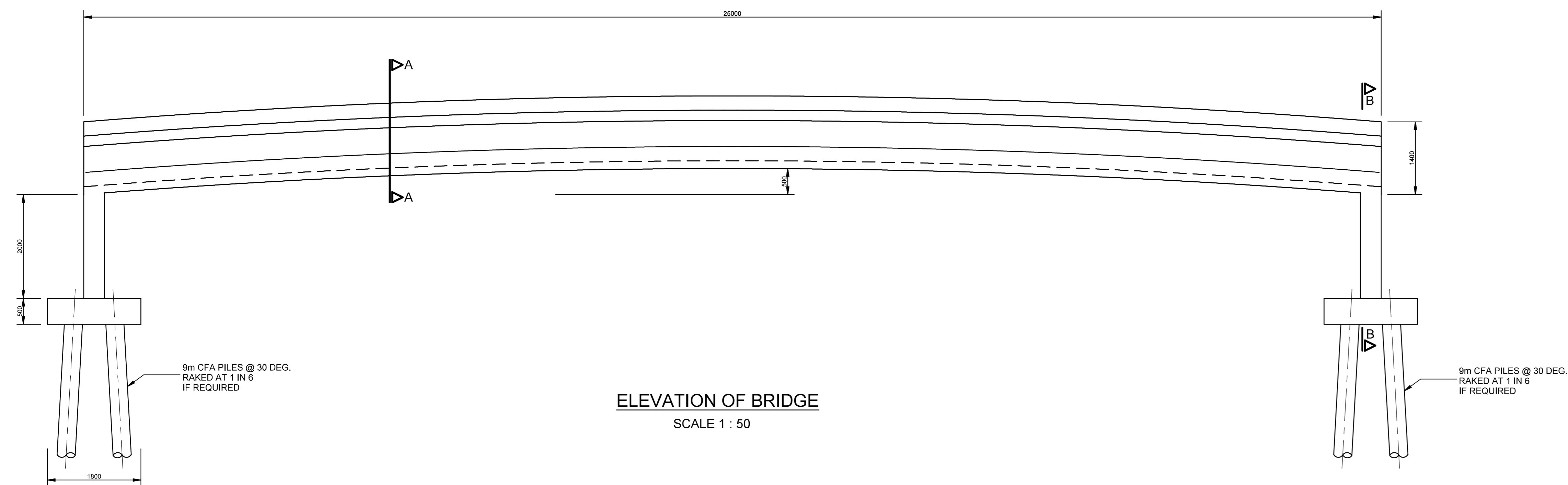
Designed and detailed under the controls established by our quality management system that meet the requirements of ISO 9001:2000 which has been independently certified by DEKRA Certification under certificate number 9000552.



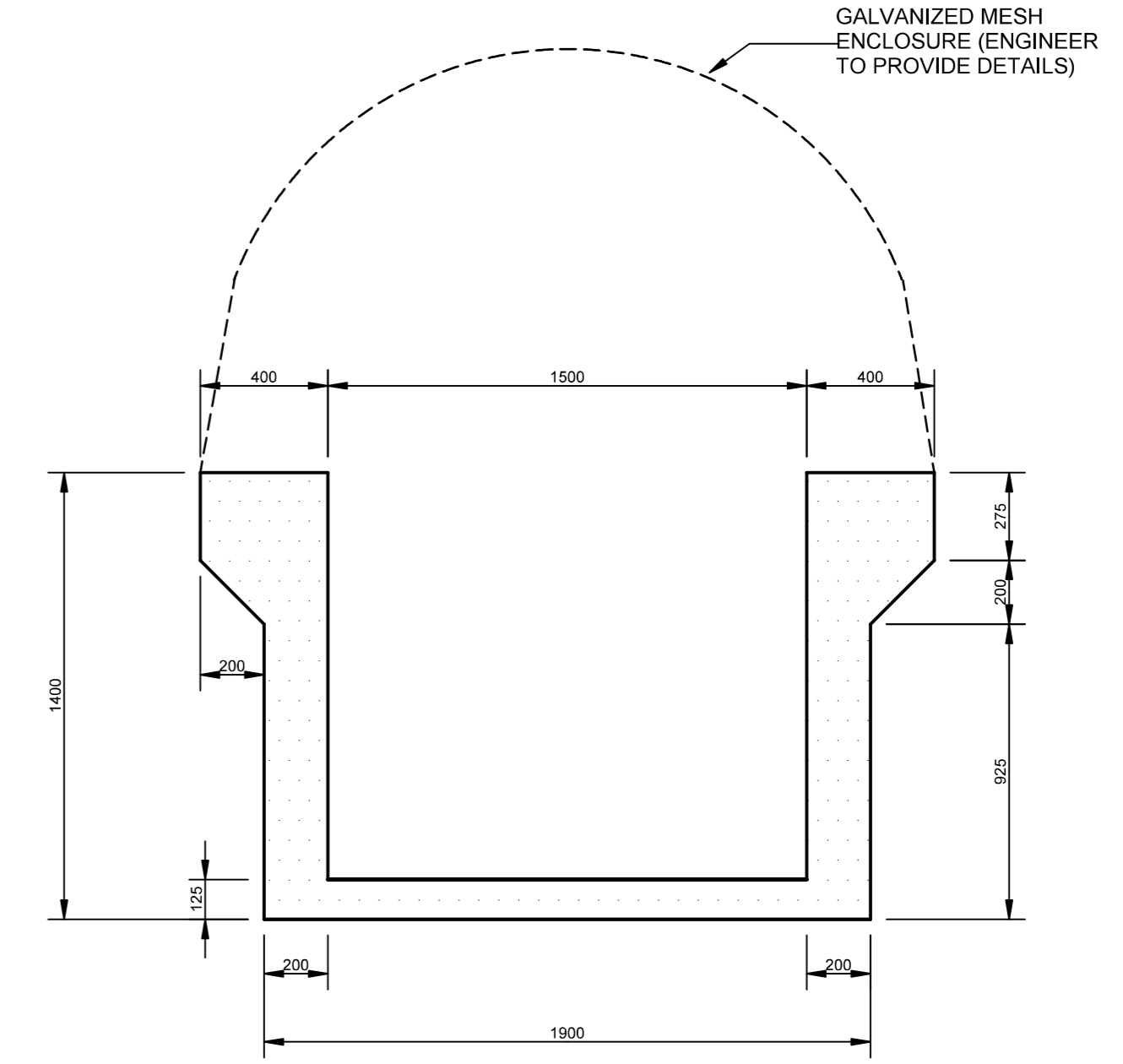
T101-AC7ME Projects: 26/08/2016 - eThekweni/Independent: Tottenham Road [07/20] - Projects: Drawings/26/ Pin (A-D).indd



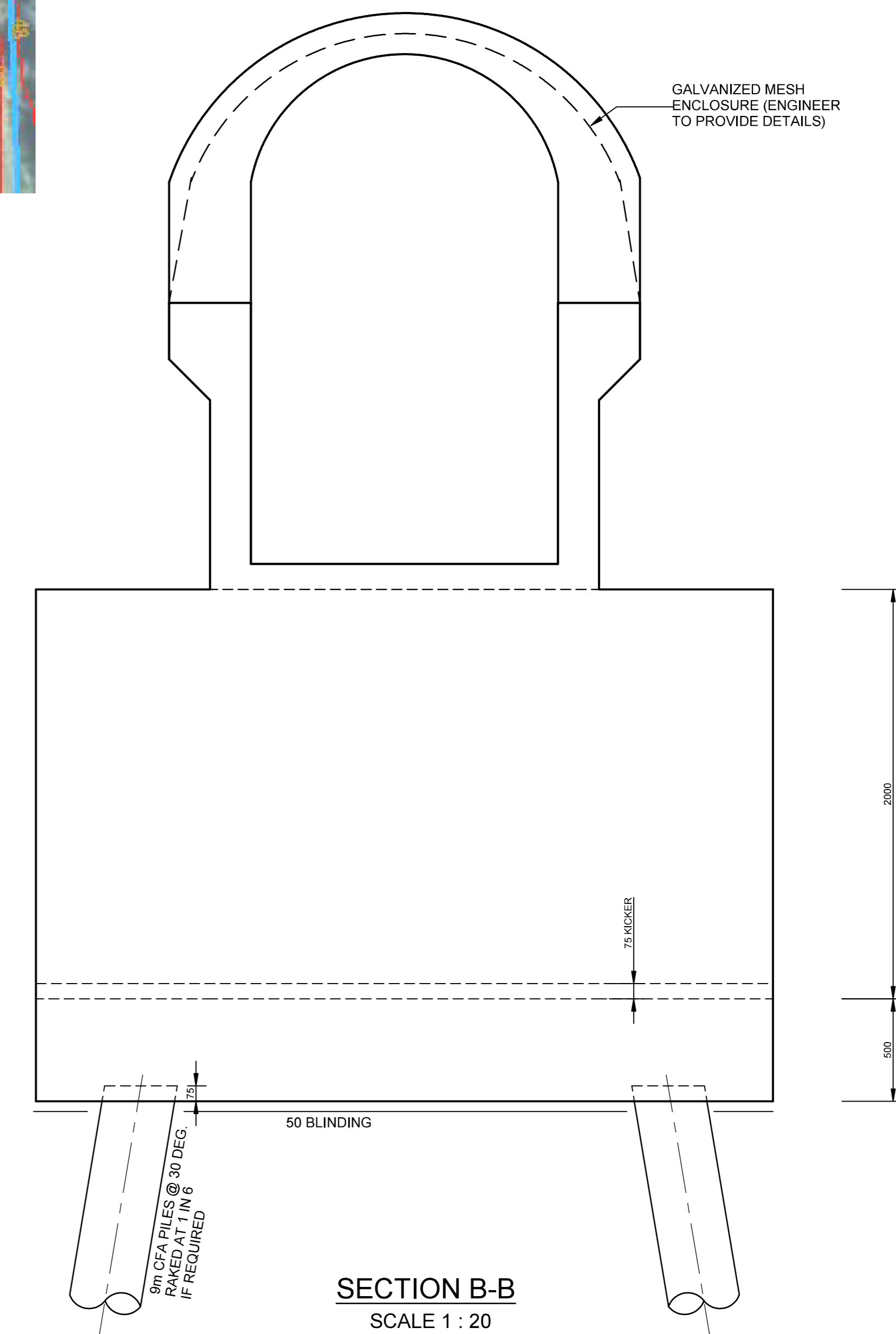
SITE PLAN



ELEVATION OF BRIDGE  
SCALE 1 : 50

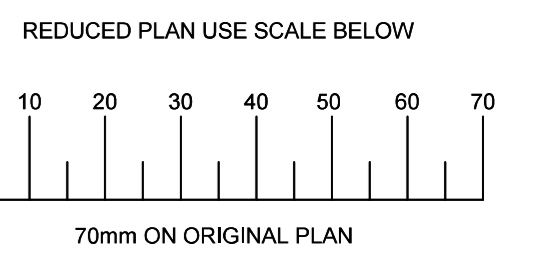


SECTION A-A  
SCALE 1 : 20



SECTION B-B  
SCALE 1 : 20

FOR APPROVAL PURPOSES ONLY



Revision Date Description

NOTE: No construction work to commence until land and servitude acquisitions have been completed

Acquisitions completed

UNDERGROUND SERVICES CHECKED

SERVICE	DATE	SIGNATURE
AIRBORNS		
SEWERS		
WATER MAINS		
G.P.D. CABLES		
ELECTRIC CABLES		
T.V. CABLES		
E.S.C. CABLES		
OIL PIPE LINE		

NOTE: Only underground services affected by new construction work are shown. Care must be taken during excavations for road foundations, trenches etc. to avoid damage to underground services such as electric, drain, optical, water mains and connections. Wherever possible these must be located before work proceeds.

Contract No. -

Project Title

TOTTENHAM ROAD  
PEDESTRIAN BRIDGE

Drawing Title

PRELIMINARY GENERAL  
DETAILS

Scales Reference

SHOWN

Designed M.B. Date 23-02-2016

Checked P.G.F. Drawn N.D.

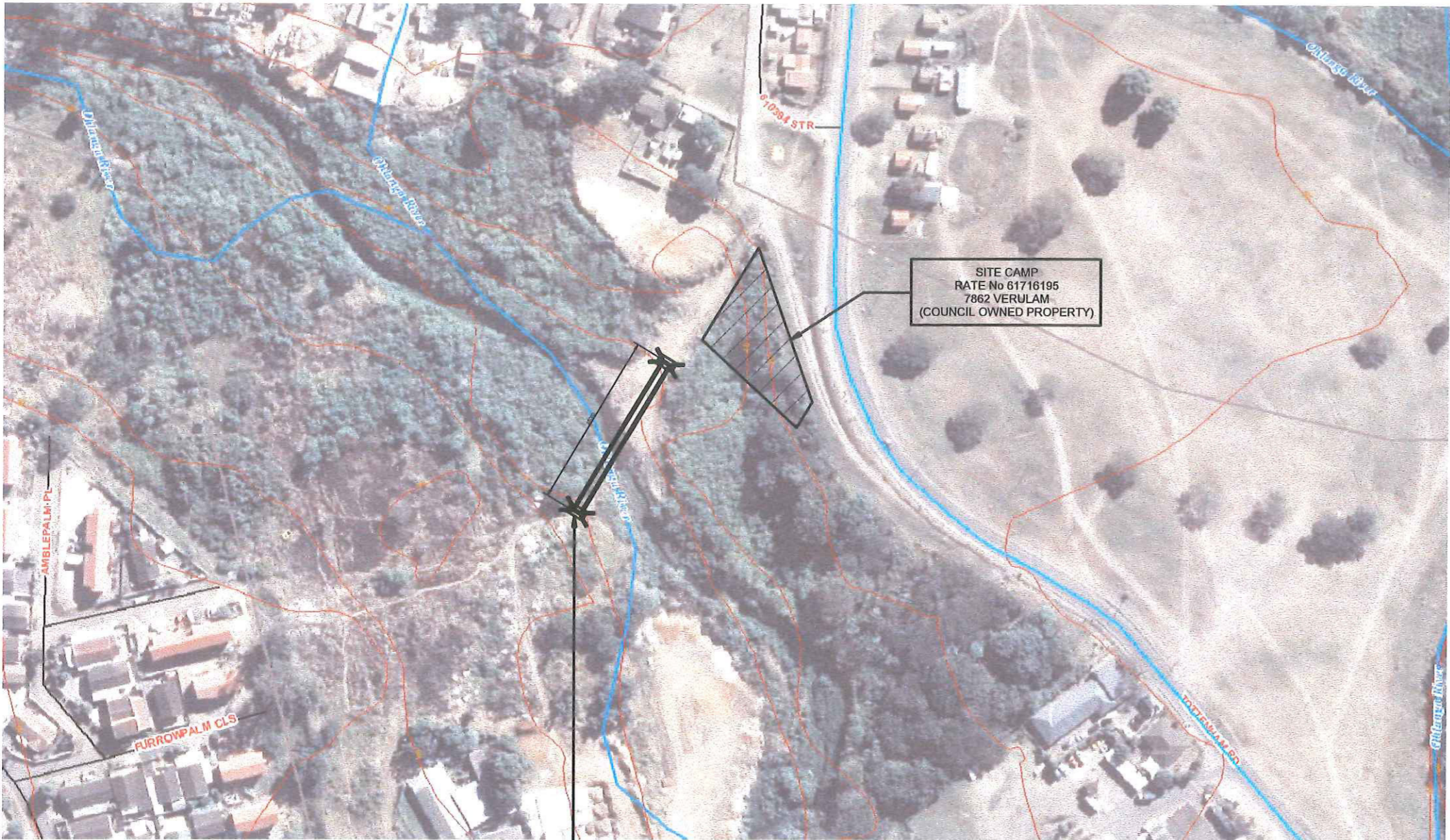
Manager Structures

Deputy Head: Roads Provision

G. Evans Head: Engineering

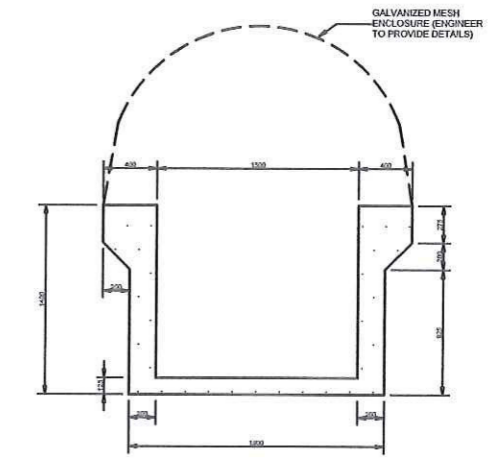
Drawing Sheet 1

No. of 1 Sheets

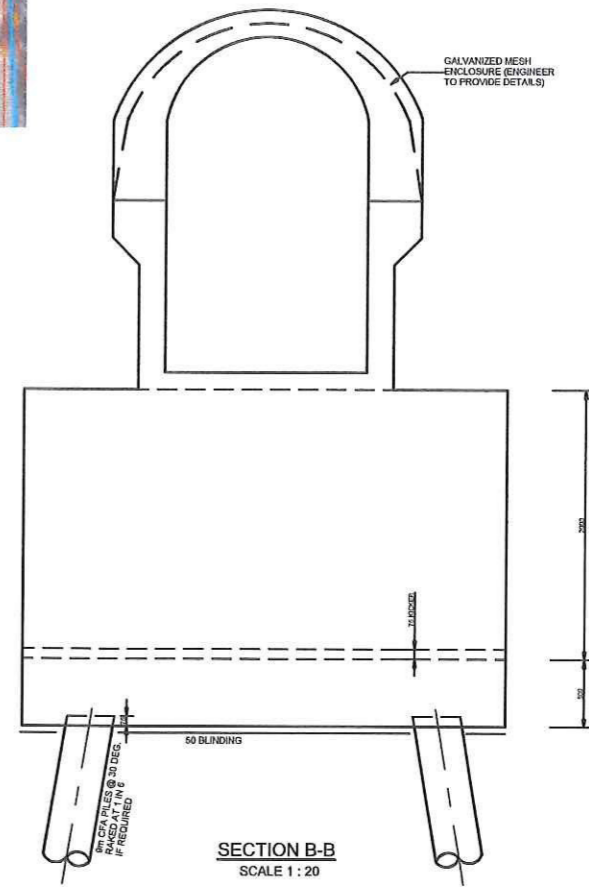


LONGITUDE: 31° 1' 30.271" E  
LATITUDE: 29° 39' 58.641" S

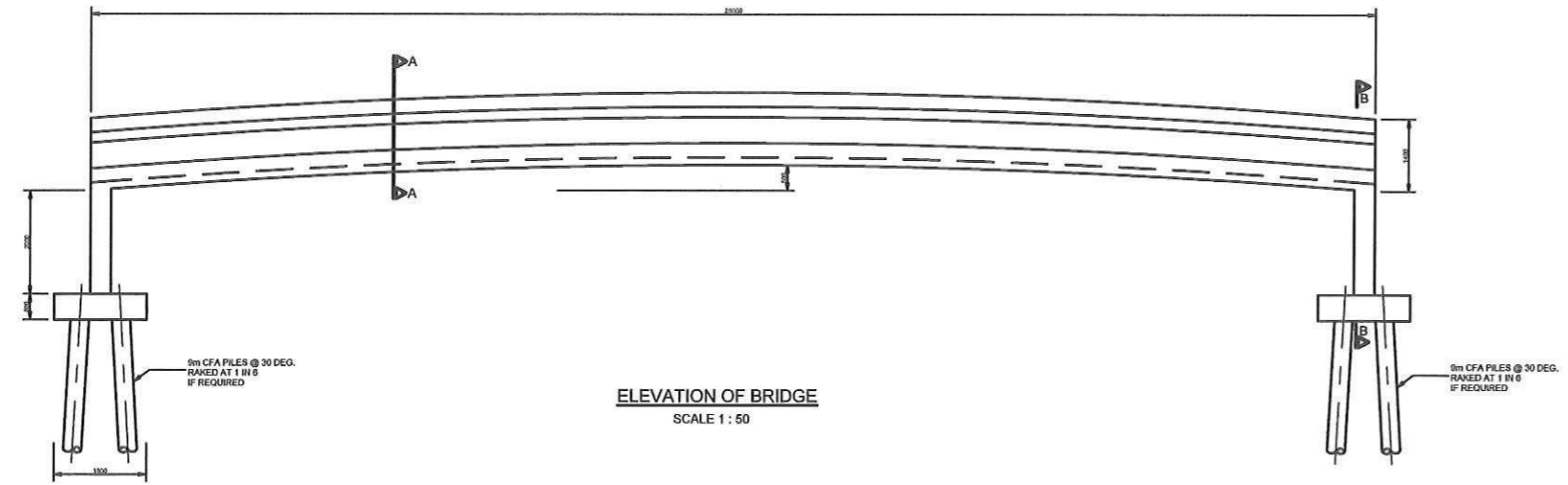
SITE PLAN



SECTION A-A  
SCALE 1 : 20



SECTION B-B  
SCALE 1 : 20



ELEVATION OF BRIDGE  
SCALE 1 : 50

FOR PRELIMINARY & APPROVAL  
PURPOSES ONLY

Revisions	Date	Description

NOTE: No construction work to commence until land and services acquisitions have been completed.

Acquisitions completed

NORTH POINT

UNDERGROUND SERVICES CHECKED		
SERVICE	DATE	SIGNATURE
Water		
Sanitation		
Electricity		
Gas		
Other		

NOTE: Only underground services affected by new construction work are shown. One must be kept during excavation for road foundations, foundations etc. to avoid damage to underground services and as a result, water, electric, water mains and gas services. Whenever possible these must be located before work proceeds.

7R-18514	
Contract No.	
Project Title	
TOTTENHAM ROAD PEDESTRIAN BRIDGE	
Drawing Title	
PRELIMINARY GENERAL DETAILS	
Scale	Reference
SHOWN	
Designed	M.B. Date JULY 2016
Checked	P.G.F. Drawn N.D.
Manager: Structures	
Deputy Head: Roads Provision	
G. Evans	Head: Engineering
Drawing No	Sheet 1 of 1 Sheets