

### Legend

#### Client

Parent Farms

#### Municipal Demarcation Board

Ward 4

#### LocalMunicipalities2018\_Final

Joe Morolong

#### DistrictMunicipalities2018\_Final

John Taolo Gaetsewe

#### Open data

OpenStreetMap



Programme: QGIS Lorem ipsum

Date: 10 October 2022

Compiler: Dr Petro Erasmus

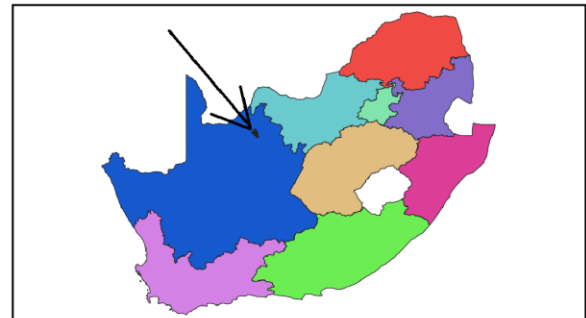
Sources: Applicant; Surveyor General, Municipal

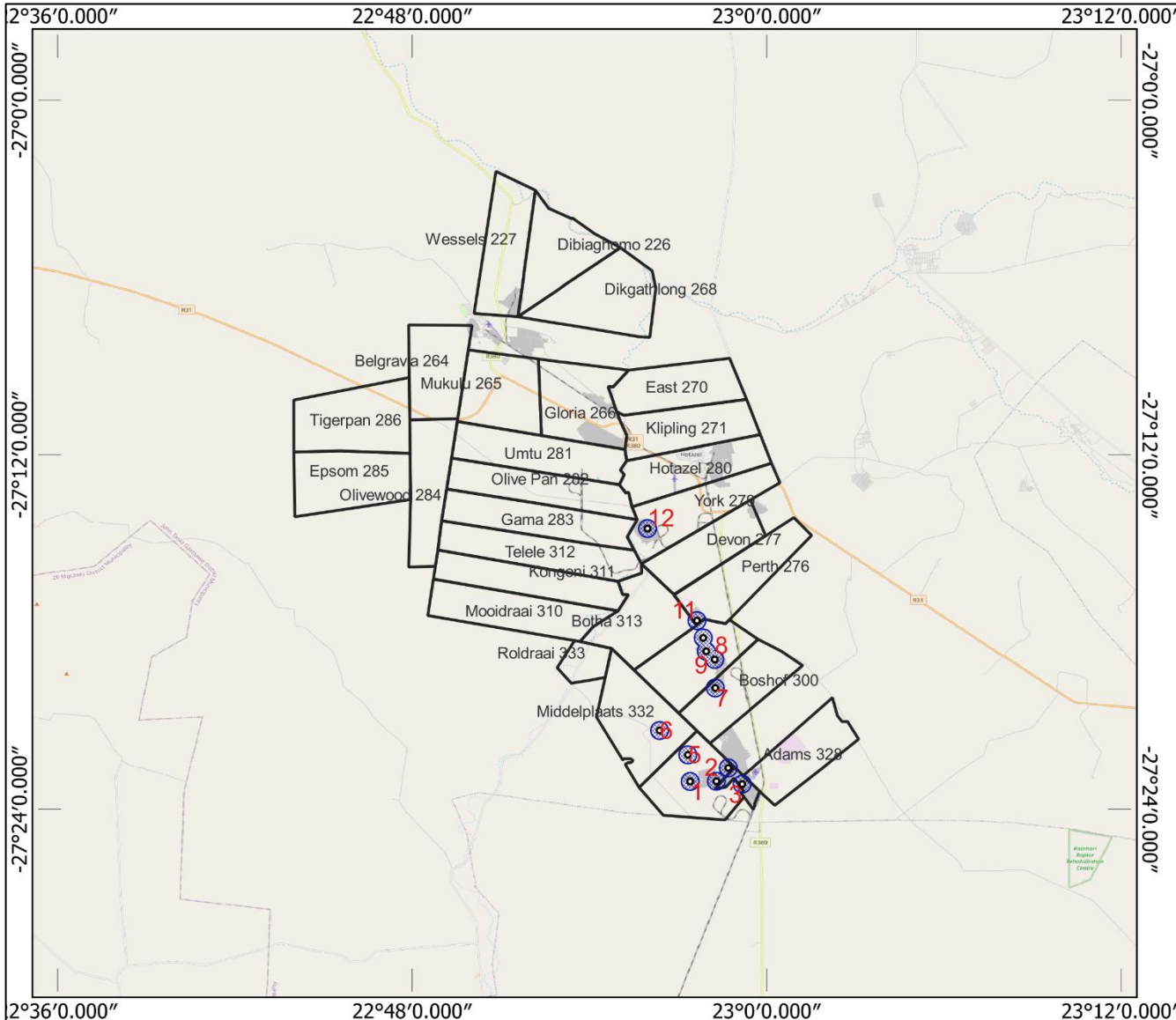


PO Box 2544  
Montana Park  
0159

(t) 012 543 3808  
(f) 086 621 0294  
info@prescali.co.za

Salene Manganese (Pty) Ltd  
NC30/5/1/1/2/13138 PR  
Local Site plan (Scale: 300 000)





**Salene Manganese (Pty) Ltd**  
**NC30/5/1/1/2/13138 PR**  
**Local Site plan (Scale: 250 000)**

### Legend

**Client**

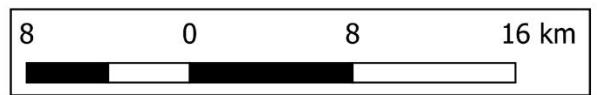
- Sampling sites
- Sampling sites 500 m buffer
- Parent Farms

**Open data**

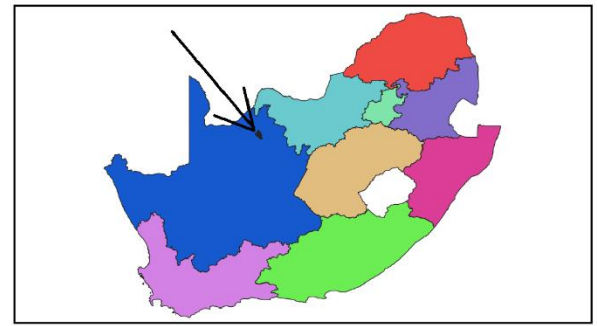
OpenStreetMap



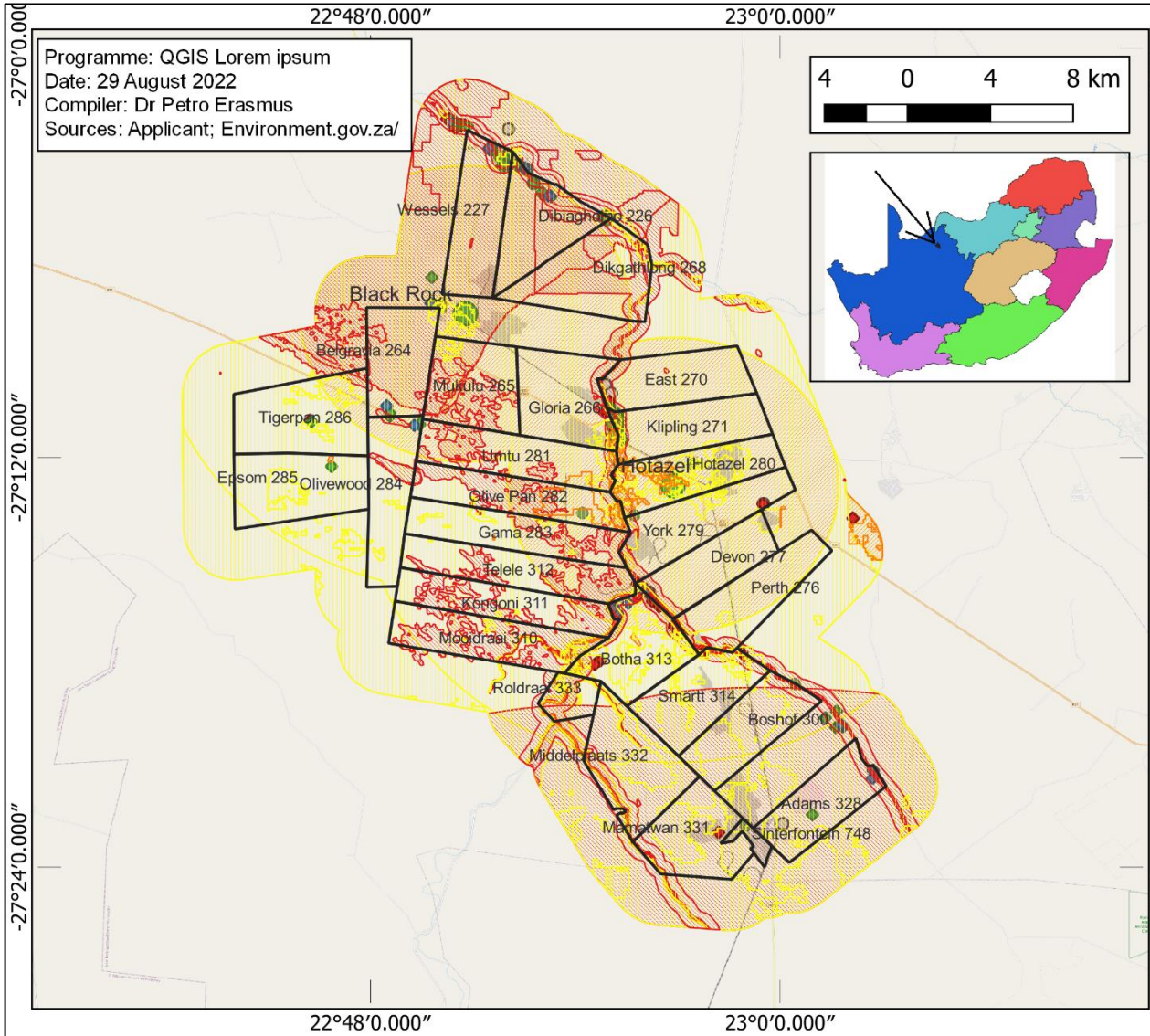
Programme: QGIS Lorem ipsum  
 Date: 29 August 2022  
 Compiler: Dr Petro Erasmus  
 Sources: Applicant; Surveyor General



**Prescalli**  
Environmental Consultants (Pty) Ltd  
 PO Box 2544 (t) 012 543 3808  
 Montana Park (f) 086 621 0294  
 0159 info@prescalli.co.za







## Legend

Client

Parent Farms

EGIS

Screening tool

biotaAnimalSpeciesThemeSens

High

Medium

biotaCBAsNational

Very High

farmingFieldCropBoundarySens

High

geoscientificPaleontologyThemeSens

High

Medium

Very High

biotaFreshwaterEcosystems

Very High

inlandwatersFreshwaterEcosystemPriorityAreas

Very High

inlandwatersRivers32mbuffer\_1

Very High

inlandwatersStrategicWaterSourceAreasAquatic

Very High

inlandwatersWetlandsandEstuaries

Very High

♦ societyHeritageGrade\_IIIa

◆ societyHeritageGrade\_IIIb

◆ societyHeritageGrade\_IIIc

○ societyHeritageUngraded

● transportationOtherAerodrome

transportationOtherAerodrome\_8000\_15000

High

Medium

● utilitiesOtherComsPoint

Open data

OpenStreetMap

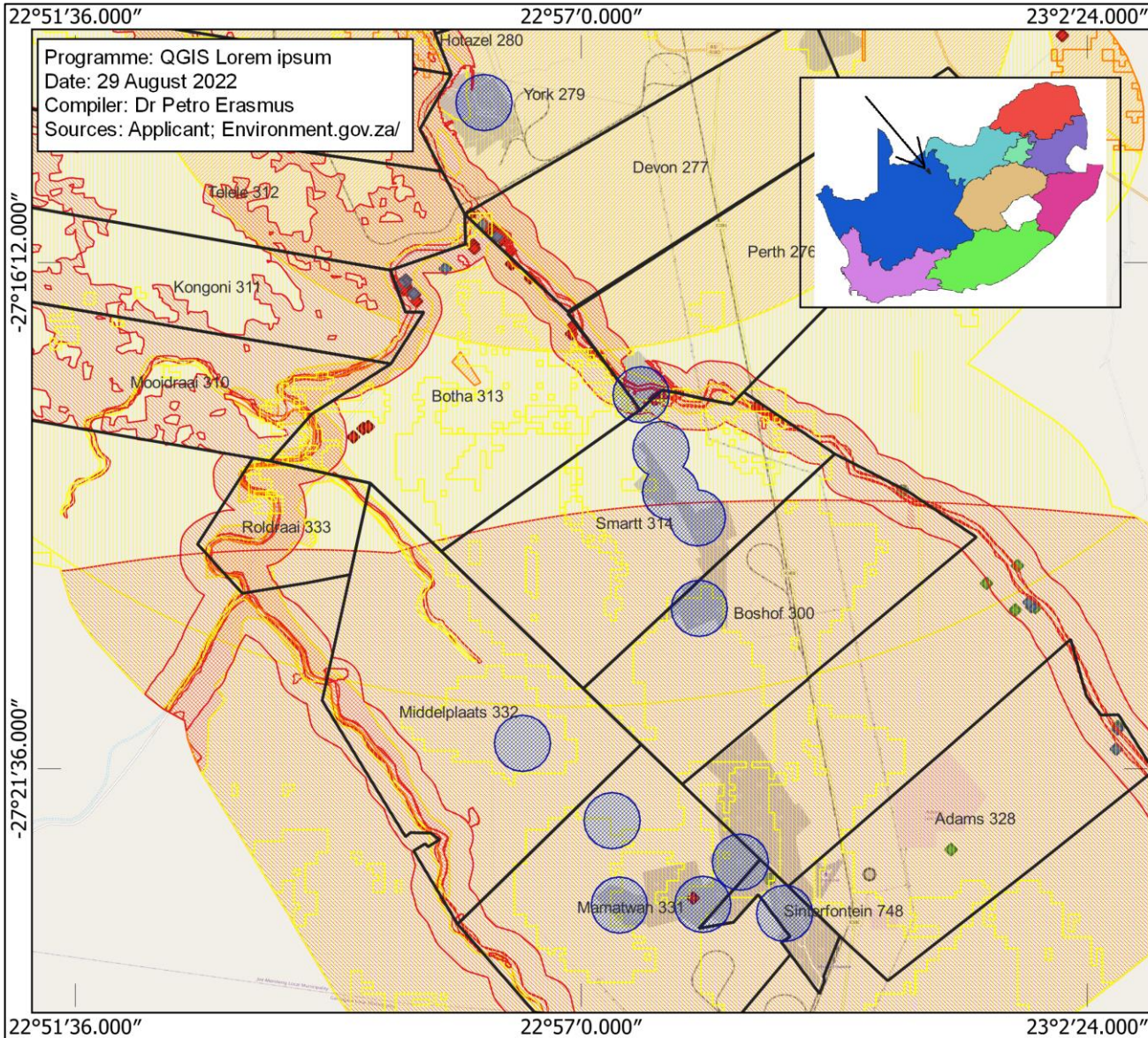


PO Box 2544 (t) 012 543 3809  
Montlana Park (f) 086 621 0294  
0159 info@prescall.co.za



Salene Manganese (Pty) Ltd  
NC30/5/1/1/2/13138 PR  
Prospecting Application Area Sensitivities





Programme: QGIS Lorem ipsum  
 Date: 29 August 2022  
 Compiler: Dr Petro Erasmus  
 Sources: Applicant; Environment.gov.za/

### Legend

#### Client

- Sampling sites 500 m buffer
- Parent Farms

#### EGIS

##### Screening tool

biotaAnimalSpeciesThemeSens

- High
- Medium

biotaCBAsNational

- Very High

farmingFieldCropBoundarySens

- High

geoscientificPaleontologyThemeSens

- High
- Medium

inlandwatersRivers32mbuffer\_1

- Very High

inlandwatersStrategicWaterSourceAreasAquatic

- Very High

inlandwatersWetlandsandEstuaries

- Very High

- societyHeritageGrade\_IIIa
- societyHeritageGrade\_IIIb
- societyHeritageGrade\_IIIc
- societyHeritageUngraded

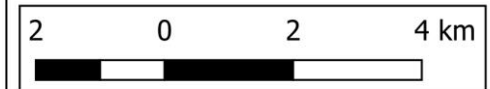
transportationOtherAerodrome\_8000\_15000

- High
- Medium

- utilitiesOtherComsPoint

#### Open data

OpenStreetMap



PC Box 2544  
 Montana Park  
 0159

(t) 012 543 3808  
 (f) 086 621 0294  
 info@prescalli.co.za

Salene Manganese (Pty) Ltd  
 NC30/5/1/1/2/13138 PR  
 Sampling Radius Sensitivities