










Appendix 3
Site Layout
(Preliminary)

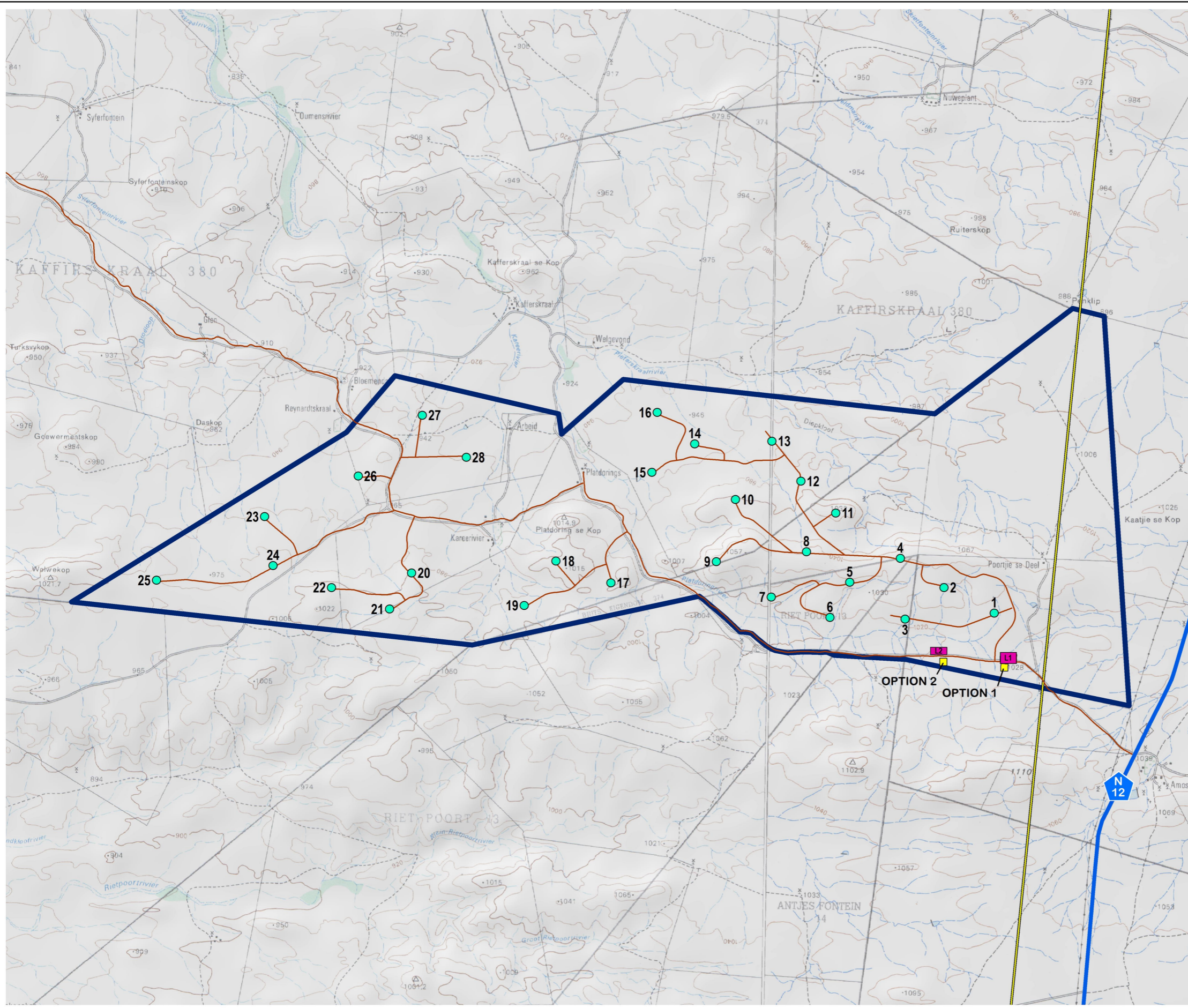
PROPOSED CONSTRUCTION OF THE KOUPI 1 WIND ENERGY FACILITY

NEAR BEAUFORT WEST, WESTERN CAPE PROVINCE

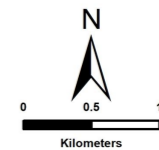
PRELIMINARY LAYOUT

Legend

-  National Routes
-  Existing High Voltage Power Lines (400kV)
-  Koupi 1 WEF Application Site
- Proposed WEF Components**
-  Turbine Positions
-  Substation Site Alternatives
-  Construction Laydown Area Site Alternatives
-  Internal Road Network



SOURCE:
ESKOM, 2012
NGI, 2014



ENVIRONMENTAL DIVISION
51 WESSELS ROAD
RIVONIA, 2129
JOHANNESBURG
SOUTH AFRICA
Phone: +27 11 798 0600
Fax: +27 11 803 7272
e-mail: info@sivest.co.za

Project No 16017	Prepared By KLS	Date 10/12/2020
Map Ref No 16017/K1_WS09	Revision 0	Date

"COPYRIGHT IS VESTED IN SIVEST IN TERMS OF THE COPYRIGHT ACT (ACT 98 OF 1978) AND NO USE OR REPRODUCTION OR DUPLICATION THEREOF MAY OCCUR WITHOUT THE WRITTEN CONSENT OF THE AUTHOR"

THIS MAP HAS BEEN PREPARED UNDER THE CONTROLS ESTABLISHED BY THE SIVEST QUALITY MANAGEMENT SYSTEM WHICH HAS BEEN CERTIFIED ISO 9001:2015 COMPLIANT