

**SCREENING REPORT FOR AN ENVIRONMENTAL AUTHORIZATION AS  
REQUIRED BY THE 2014 EIA REGULATIONS – PROPOSED SITE  
ENVIRONMENTAL SENSITIVITY**

**EIA Reference number:** New EA Application

**Project name:** Tetra4 Phase 2 Production Activities

**Project title:** Tetra4 Phase 2 Production Activities

**Date screening report generated:** 19/01/2022 13:00:47

**Applicant:** Tetra4

**Compiler:** EIMS

**Compiler signature:** .....

**Application Category:** Mining|Production Right|Gas or Oil Terrestrial

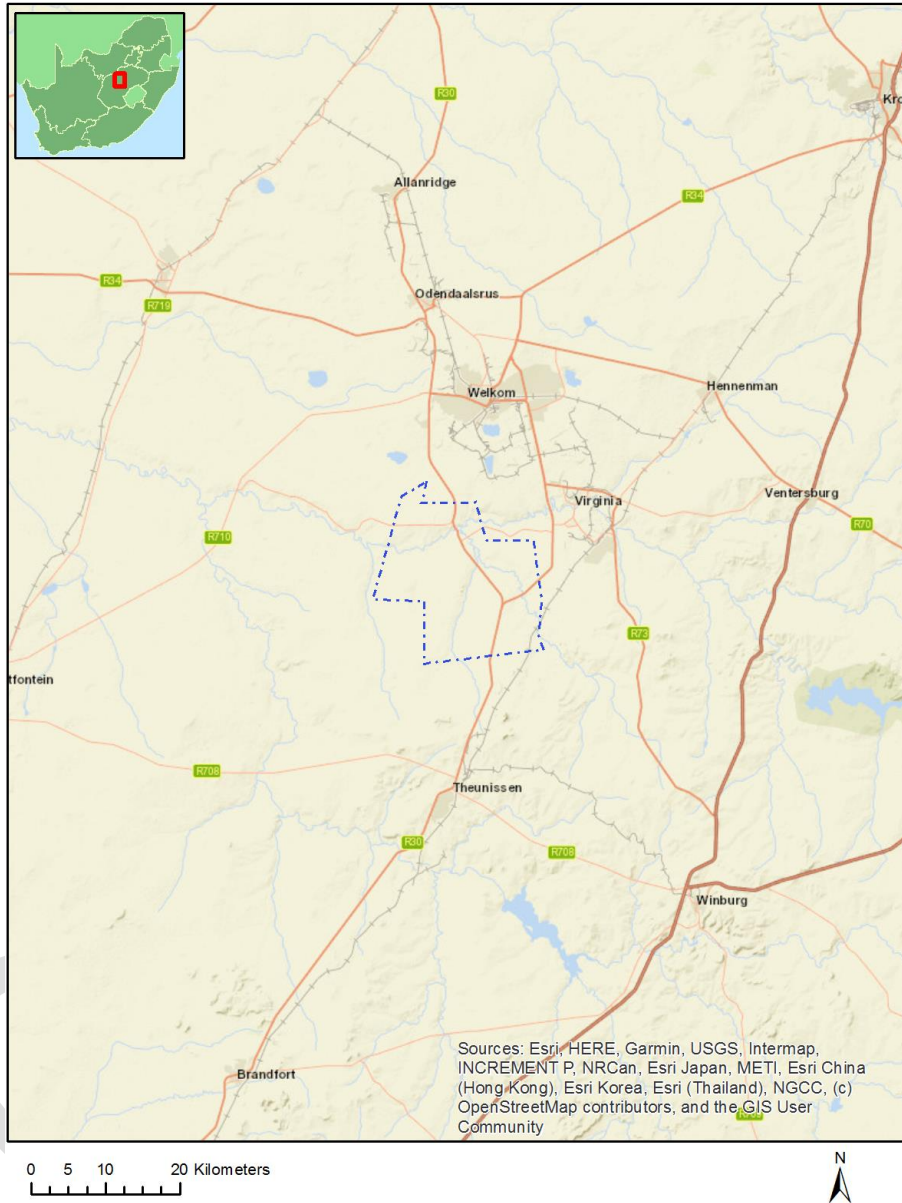
## Table of Contents

Proposed Project Location .....	3
Orientation map 1: General location .....	3
Map of proposed site and relevant area(s) .....	4
Cadastral details of the proposed site .....	4
Wind and Solar developments with an approved Environmental Authorisation or applications under consideration within 30 km of the proposed area .....	19
Environmental Management Frameworks relevant to the application .....	19
Environmental screening results and assessment outcomes .....	20
Relevant development incentives, restrictions, exclusions or prohibitions .....	20
Map indicating proposed development footprint within applicable development incentive, restriction, exclusion or prohibition zones .....	21
Proposed Development Area Environmental Sensitivity .....	21
Specialist assessments identified .....	22
Results of the environmental sensitivity of the proposed area .....	24
MAP OF RELATIVE AGRICULTURE THEME SENSITIVITY .....	24
MAP OF RELATIVE ANIMAL SPECIES THEME SENSITIVITY .....	25
MAP OF RELATIVE AQUATIC BIODIVERSITY THEME SENSITIVITY .....	26
MAP OF RELATIVE ARCHAEOLOGICAL AND CULTURAL HERITAGE THEME SENSITIVITY .....	27
MAP OF RELATIVE CIVIL AVIATION THEME SENSITIVITY .....	28
MAP OF RELATIVE DEFENCE THEME SENSITIVITY .....	29
MAP OF RELATIVE PALEONTOLOGY THEME SENSITIVITY .....	30
MAP OF RELATIVE PLANT SPECIES THEME SENSITIVITY .....	31
MAP OF RELATIVE TERRESTRIAL BIODIVERSITY THEME SENSITIVITY .....	32

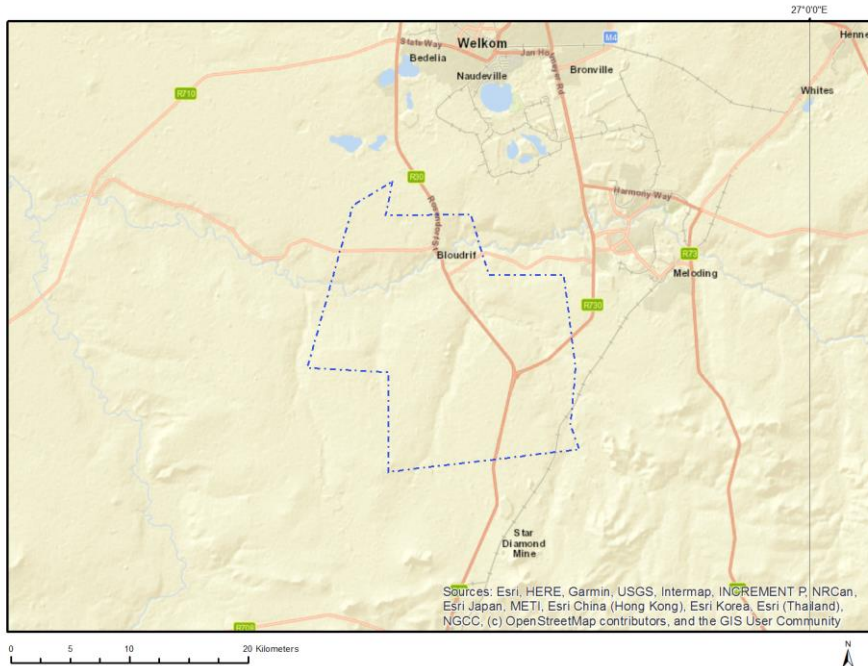
# Proposed Project Location

## Orientation map 1: General location

General Orientation: Tetra4 Phase 2 Production Activities



## Map of proposed site and relevant area(s)



## Cadastral details of the proposed site

Property details:

No	Farm Name	Farm/ Erf No	Portion	Latitude	Longitude	Property Type
1	BLAAUWDRIFT	412	0	28°6'44.02S	26°43'14.33E	Erven
2	BLAAUWDRIFT	413	0	28°6'44.96S	26°43'14.35E	Erven
3	BLAAUWDRIFT	409	0	28°6'44.89S	26°43'12.49E	Erven
4	BLAAUWDRIFT	410	0	28°6'43.9S	26°43'13.07E	Erven
5	BLAAUWDRIFT	414	0	28°6'45.86S	26°43'14.83E	Erven
6	BLAAUWDRIFT	415	0	28°6'46.43S	26°43'13.71E	Erven
7	BLAAUWDRIFT	429	0	28°6'58.28S	26°43'6.42E	Erven
8	BLAAUWDRIFT	430	0	28°6'57.35S	26°43'5.76E	Erven
9	BLAAUWDRIFT	393	0	28°6'45.27S	26°43'7.91E	Erven
10	BLAAUWDRIFT	395	0	28°6'46.15S	26°43'6.61E	Erven
11	BLAAUWDRIFT	678	0	28°6'22.06S	26°43'21.45E	Erven
12	BLAAUWDRIFT	679	0	28°6'27.82S	26°43'18.14E	Erven
13	BLAAUWDRIFT	172	0	28°6'40.68S	26°42'46.93E	Erven
14	BLAAUWDRIFT	291	0	28°6'35.07S	26°43'3.64E	Erven
15	BLAAUWDRIFT	292	0	28°6'34.55S	26°43'4.33E	Erven
16	BLAAUWDRIFT	877	0	28°6'51.89S	26°43'26.06E	Erven
17	BLAAUWDRIFT	878	1	28°7'6.44S	26°43'1.59E	Erven
18	BLAAUWDRIFT	438	0	28°6'48.6S	26°43'15.62E	Erven
19	BLAAUWDRIFT	323	0	28°6'44.94S	26°43'1.39E	Erven
20	BLAAUWDRIFT	326	0	28°6'46.94S	26°43'2.04E	Erven
21	BLAAUWDRIFT	405	0	28°6'47.35S	26°43'9.18E	Erven
22	BLAAUWDRIFT	407	0	28°6'46.32S	26°43'10.71E	Erven
23	BLAAUWDRIFT	424	0	28°6'51.12S	26°43'6.7E	Erven
24	BLAAUWDRIFT	427	0	28°6'53.19S	26°43'4.22E	Erven
25	BLAAUWDRIFT	434	0	28°6'54.27S	26°43'7.91E	Erven
26	BLAAUWDRIFT	436	0	28°6'49.71S	26°43'13.96E	Erven
27	BLAAUWDRIFT	389	0	28°6'43.4S	26°43'10.45E	Erven

28	BLAAUWDRIFT	391	0	28°6'44.4S	26°43'9.22E	Erven
29	BLAAUWDRIFT	397	0	28°6'50.89S	26°43'3.22E	Erven
30	BLAAUWDRIFT	399	0	28°6'50.59S	26°43'4.49E	Erven
31	BLAAUWDRIFT	672	0	28°6'19.93S	26°43'17.28E	Erven
32	BLAAUWDRIFT	674	0	28°6'21.18S	26°43'18.48E	Erven
33	BLAAUWDRIFT	681	0	28°6'28.23S	26°43'13.49E	Erven
34	BLAAUWDRIFT	287	0	28°6'36.37S	26°43'0.04E	Erven
35	BLAAUWDRIFT	289	0	28°6'36.12S	26°43'1.9E	Erven
36	BLAAUWDRIFT	296	0	28°6'32.49S	26°43'7.09E	Erven
37	BLAAUWDRIFT	298	0	28°6'31.46S	26°43'8.48E	Erven
38	BLAAUWDRIFT	685	0	28°6'26.38S	26°43'7.47E	Erven
39	BLAAUWDRIFT	687	0	28°6'29.86S	26°43'4.93E	Erven
40	BLAAUWDRIFT	884	0	28°6'43.99S	26°43'34.57E	Erven
41	BLAAUWDRIFT	308	0	28°6'36.13S	26°43'4.66E	Erven
42	BLAAUWDRIFT	439	0	28°6'47.92S	26°43'16.51E	Erven
43	BLAAUWDRIFT	441	0	28°6'47.48S	26°43'18.73E	Erven
44	BLAAUWDRIFT	443	0	28°6'47.13S	26°43'20.88E	Erven
45	BLAAUWDRIFT	886	0	28°6'33.23S	26°43'30.72E	Erven
46	BLAAUWDRIFT	888	0	28°6'17.76S	26°43'25.49E	Erven
47	BLAAUWDRIFT	406	0	28°6'46.83S	26°43'9.94E	Erven
48	BLAAUWDRIFT	418	0	28°6'48.03S	26°43'11.31E	Erven
49	BLAAUWDRIFT	425	0	28°6'51.64S	26°43'5.93E	Erven
50	BLAAUWDRIFT	433	0	28°6'54.67S	26°43'6.97E	Erven
51	BLAAUWDRIFT	437	0	28°6'49.16S	26°43'14.79E	Erven
52	BLAAUWDRIFT	390	0	28°6'43.99S	26°43'9.9E	Erven
53	BLAAUWDRIFT	398	0	28°6'52.2S	26°43'3.63E	Erven
54	BLAAUWDRIFT	675	0	28°6'20.24S	26°43'19.48E	Erven
55	BLAAUWDRIFT	682	0	28°6'28.85S	26°43'7.96E	Erven
56	BLAAUWDRIFT	177	0	28°6'39.85S	26°42'43.89E	Erven
57	BLAAUWDRIFT	288	0	28°6'36.24S	26°43'0.96E	Erven
58	BLAAUWDRIFT	295	0	28°6'33S	26°43'6.41E	Erven
59	BLAAUWDRIFT	686	0	28°6'27.19S	26°43'6.38E	Erven
60	BLAAUWDRIFT	883	0	28°6'44.83S	26°43'21.03E	Erven
61	BLAAUWDRIFT	307	0	28°6'35.61S	26°43'5.34E	Erven
62	BLAAUWDRIFT	442	0	28°6'47.3S	26°43'19.8E	Erven
63	BLAAUWDRIFT	449	0	28°6'45.2S	26°43'31.33E	Erven
64	BLAAUWDRIFT	887	0	28°6'14.82S	26°43'32.86E	Erven
65	BLAAUWDRIFT	312	0	28°6'37.71S	26°43'1.44E	Erven
66	BLAAUWDRIFT	319	0	28°6'42.26S	26°43'0.51E	Erven
67	BLAAUWDRIFT	889	0	28°6'23.93S	26°43'14.44E	Erven
68	BLAAUWDRIFT	453	0	28°6'46.03S	26°43'35.85E	Erven
69	BLAAUWDRIFT	460	0	28°6'44.24S	26°43'37.38E	Erven
70	BLAAUWDRIFT	468	0	28°6'38.74S	26°43'36.13E	Erven
71	BLAAUWDRIFT	475	0	28°6'40.12S	26°43'32.56E	Erven
72	BLAAUWDRIFT	482	0	28°6'42.95S	26°43'28.39E	Erven
73	BLAAUWDRIFT	403	0	28°6'48.37S	26°43'7.65E	Erven
74	BLAAUWDRIFT	420	0	28°6'49.06S	26°43'9.77E	Erven
75	BLAAUWDRIFT	422	0	28°6'50.09S	26°43'8.23E	Erven
76	BLAAUWDRIFT	385	0	28°6'40.91S	26°43'10.7E	Erven
77	BLAAUWDRIFT	387	0	28°6'42.23S	26°43'11.59E	Erven
78	BLAAUWDRIFT	401	0	28°6'49.39S	26°43'6.13E	Erven
79	BLAAUWDRIFT	670	0	28°6'18.58S	26°43'17.9E	Erven
80	BLAAUWDRIFT	179	0	28°6'40.14S	26°42'42.43E	Erven
81	BLAAUWDRIFT	285	0	28°6'36.15S	26°42'58.72E	Erven
82	BLAAUWDRIFT	300	0	28°6'31.99S	26°43'10.16E	Erven
83	BLAAUWDRIFT	683	0	28°6'28.04S	26°43'9.04E	Erven
84	BLAAUWDRIFT	304	0	28°6'34.06S	26°43'7.42E	Erven
85	BLAAUWDRIFT	306	0	28°6'35.1S	26°43'6.04E	Erven
86	BLAAUWDRIFT	445	0	28°6'46.78S	26°43'23.04E	Erven
87	BLAAUWDRIFT	447	0	28°6'47.24S	26°43'25.7E	Erven

88	BLAAUWDRIFT	314	0	28°6'37.79S	26°42'59.12E	Erven
89	BLAAUWDRIFT	316	0	28°6'40.1S	26°42'59.82E	Erven
90	BLAAUWDRIFT	890	0	28°6'22.23S	26°43'12.82E	Erven
91	BLAAUWDRIFT	454	0	28°6'46.24S	26°43'36.98E	Erven
92	BLAAUWDRIFT	456	0	28°6'46.62S	26°43'39.64E	Erven
93	BLAAUWDRIFT	470	0	28°6'40.45S	26°43'37.03E	Erven
94	BLAAUWDRIFT	472	0	28°6'39.72S	26°43'33.79E	Erven
95	BLAAUWDRIFT	487	0	28°6'43.16S	26°43'23.45E	Erven
96	BLAAUWDRIFT	331	0	28°6'47.2S	26°43'3.89E	Erven
97	BLAAUWDRIFT	333	0	28°6'45.87S	26°43'3.37E	Erven
98	BLAAUWDRIFT	335	0	28°6'44.54S	26°43'2.93E	Erven
99	BLAAUWDRIFT	491	0	28°6'43.4S	26°43'19.15E	Erven
100	BLAAUWDRIFT	404	0	28°6'47.85S	26°43'8.41E	Erven
101	BLAAUWDRIFT	416	0	28°6'47S	26°43'12.85E	Erven
102	BLAAUWDRIFT	428	0	28°6'58.79S	26°43'7.49E	Erven
103	BLAAUWDRIFT	435	0	28°6'50.27S	26°43'13.13E	Erven
104	BLAAUWDRIFT	388	0	28°6'42.81S	26°43'11.02E	Erven
105	BLAAUWDRIFT	400	0	28°6'49.91S	26°43'5.36E	Erven
106	BLAAUWDRIFT	673	0	28°6'20.55S	26°43'17.87E	Erven
107	BLAAUWDRIFT	174	0	28°6'39.42S	26°42'46.1E	Erven
108	BLAAUWDRIFT	290	0	28°6'35.71S	26°43'2.86E	Erven
109	BLAAUWDRIFT	297	0	28°6'31.96S	26°43'7.79E	Erven
110	BLAAUWDRIFT	684	0	28°6'26.22S	26°43'9.59E	Erven
111	BLAAUWDRIFT	885	0	28°6'35.55S	26°43'36.95E	Erven
112	BLAAUWDRIFT	302	0	28°6'33.03S	26°43'8.8E	Erven
113	BLAAUWDRIFT	309	0	28°6'36.63S	26°43'3.98E	Erven
114	BLAAUWDRIFT	440	0	28°6'47.64S	26°43'17.65E	Erven
115	BLAAUWDRIFT	451	0	28°6'45.62S	26°43'33.59E	Erven
116	BLAAUWDRIFT	310	0	28°6'37.17S	26°43'3.37E	Erven
117	BLAAUWDRIFT	321	0	28°6'43.6S	26°43'0.95E	Erven
118	BLAAUWDRIFT	328	0	28°6'48.31S	26°43'2.58E	Erven
119	BLAAUWDRIFT	458	0	28°6'44.67S	26°43'39.35E	Erven
120	BLAAUWDRIFT	462	0	28°6'42.99S	26°43'38.74E	Erven
121	BLAAUWDRIFT	466	0	28°6'39.94S	26°43'38.08E	Erven
122	BLAAUWDRIFT	473	0	28°6'41.47S	26°43'34.6E	Erven
123	BLAAUWDRIFT	484	0	28°6'42.15S	26°43'25.32E	Erven
124	BLAAUWDRIFT	336	0	28°6'43.87S	26°43'2.72E	Erven
125	BLAAUWDRIFT	490	0	28°6'43.12S	26°43'20.11E	Erven
126	BLAAUWDRIFT	492	0	28°6'43.78S	26°43'18.36E	Erven
127	BLAAUWDRIFT	351	0	28°6'35.92S	26°43'8.67E	Erven
128	BLAAUWDRIFT	402	0	28°6'48.88S	26°43'6.89E	Erven
129	BLAAUWDRIFT	421	0	28°6'49.58S	26°43'9E	Erven
130	BLAAUWDRIFT	423	0	28°6'50.61S	26°43'7.47E	Erven
131	BLAAUWDRIFT	386	0	28°6'41.67S	26°43'12.18E	Erven
132	BLAAUWDRIFT	671	0	28°6'19.3S	26°43'16.69E	Erven
133	BLAAUWDRIFT	178	0	28°6'39.99S	26°42'43.17E	Erven
134	BLAAUWDRIFT	180	0	28°6'40.22S	26°42'41.43E	Erven
135	BLAAUWDRIFT	286	0	28°6'36.96S	26°42'58.92E	Erven
136	BLAAUWDRIFT	299	0	28°6'30.95S	26°43'9.17E	Erven
137	BLAAUWDRIFT	301	0	28°6'32.51S	26°43'9.48E	Erven
138	BLAAUWDRIFT	303	0	28°6'33.54S	26°43'8.11E	Erven
139	BLAAUWDRIFT	305	0	28°6'34.58S	26°43'6.72E	Erven
140	BLAAUWDRIFT	444	0	28°6'46.96S	26°43'21.97E	Erven
141	BLAAUWDRIFT	446	0	28°6'46.56S	26°43'24.27E	Erven
142	BLAAUWDRIFT	315	0	28°6'38.59S	26°42'59.4E	Erven
143	BLAAUWDRIFT	317	0	28°6'40.88S	26°43'0.06E	Erven
144	BLAAUWDRIFT	891	0	28°6'33.91S	26°43'1.41E	Erven
145	BLAAUWDRIFT	455	0	28°6'46.46S	26°43'38.14E	Erven
146	BLAAUWDRIFT	457	0	28°6'45.53S	26°43'39.81E	Erven
147	BLAAUWDRIFT	469	0	28°6'39.21S	26°43'34.98E	Erven



148	BLAAUWDRIFT	471	0	28°6'40.93S	26°43'35.88E	Erven
149	BLAAUWDRIFT	486	0	28°6'43.95S	26°43'24.28E	Erven
150	BLAAUWDRIFT	488	0	28°6'42.85S	26°43'22.39E	Erven
151	BLAAUWDRIFT	332	0	28°6'46.54S	26°43'3.59E	Erven
152	BLAAUWDRIFT	334	0	28°6'45.2S	26°43'3.15E	Erven
153	BLAAUWDRIFT	2	0	28°6'58.7S	26°42'52.9E	Erven
154	BLAAUWDRIFT	4	0	28°6'57.97S	26°42'54.97E	Erven
155	BLAAUWDRIFT	353	0	28°6'35.06S	26°43'10.01E	Erven
156	BLAAUWDRIFT	417	0	28°6'47.51S	26°43'12.07E	Erven
157	BLAAUWDRIFT	419	0	28°6'48.55S	26°43'10.54E	Erven
158	BLAAUWDRIFT	173	0	28°6'39.29S	26°42'46.82E	Erven
159	BLAAUWDRIFT	175	0	28°6'39.57S	26°42'45.36E	Erven
160	BLAAUWDRIFT	448	0	28°6'45.05S	26°43'29.8E	Erven
161	BLAAUWDRIFT	450	0	28°6'45.41S	26°43'32.46E	Erven
162	BLAAUWDRIFT	311	0	28°6'37.51S	26°43'2.45E	Erven
163	BLAAUWDRIFT	313	0	28°6'37.9S	26°43'0.54E	Erven
164	BLAAUWDRIFT	459	0	28°6'45.09S	26°43'37.8E	Erven
165	BLAAUWDRIFT	461	0	28°6'43.84S	26°43'39.04E	Erven
166	BLAAUWDRIFT	465	0	28°6'42.22S	26°43'38.47E	Erven
167	BLAAUWDRIFT	467	0	28°6'38.17S	26°43'37.41E	Erven
168	BLAAUWDRIFT	330	0	28°6'47.96S	26°43'4.33E	Erven
169	BLAAUWDRIFT	493	0	28°6'44.76S	26°43'17.85E	Erven
170	BLAAUWDRIFT	495	0	28°6'43.53S	26°43'16.82E	Erven
171	BLAAUWDRIFT	502	0	28°6'41.4S	26°43'22.1E	Erven
172	BLAAUWDRIFT	504	0	28°6'41.36S	26°43'24.2E	Erven
173	BLAAUWDRIFT	9	0	28°6'54.64S	26°42'59.88E	Erven
174	BLAAUWDRIFT	11	0	28°6'52.63S	26°42'59.46E	Erven
175	BLAAUWDRIFT	358	0	28°6'36.88S	26°43'11.82E	Erven
176	BLAAUWDRIFT	520	0	28°6'30.83S	26°43'36.49E	Erven
177	BLAAUWDRIFT	522	0	28°6'29.08S	26°43'34.79E	Erven
178	BLAAUWDRIFT	529	0	28°6'33.85S	26°43'32.98E	Erven
179	BLAAUWDRIFT	531	0	28°6'35.05S	26°43'32.33E	Erven
180	BLAAUWDRIFT	376	0	28°6'45.23S	26°43'5.27E	Erven
181	BLAAUWDRIFT	378	0	28°6'44.26S	26°43'6.47E	Erven
182	BLAAUWDRIFT	33	0	28°6'58.86S	26°42'45.25E	Erven
183	BLAAUWDRIFT	56	0	28°6'54.66S	26°42'52.55E	Erven
184	BLAAUWDRIFT	411	0	28°6'42.83S	26°43'13.99E	Erven
185	BLAAUWDRIFT	408	0	28°6'45.7S	26°43'11.66E	Erven
186	BLAAUWDRIFT	431	0	28°6'56.04S	26°43'5.4E	Erven
187	BLAAUWDRIFT	432	0	28°6'55.18S	26°43'6.13E	Erven
188	BLAAUWDRIFT	392	0	28°6'44.84S	26°43'8.56E	Erven
189	BLAAUWDRIFT	396	0	28°6'46.58S	26°43'5.95E	Erven
190	BLAAUWDRIFT	676	0	28°6'19.43S	26°43'20.57E	Erven
191	BLAAUWDRIFT	677	0	28°6'23.82S	26°43'19.38E	Erven
192	BLAAUWDRIFT	680	0	28°6'29.75S	26°43'11.17E	Erven
193	BLAAUWDRIFT	170	0	28°6'41.12S	26°42'45.55E	Erven
194	BLAAUWDRIFT	171	0	28°6'41.58S	26°42'46.61E	Erven
195	BLAAUWDRIFT	293	0	28°6'34.03S	26°43'5.03E	Erven
196	BLAAUWDRIFT	294	0	28°6'33.52S	26°43'5.71E	Erven
197	BLAAUWDRIFT	688	0	28°6'32.53S	26°43'2.95E	Erven
198	BLAAUWDRIFT	880	0	28°6'43.06S	26°42'45.29E	Erven
199	BLAAUWDRIFT	882	0	28°6'41.65S	26°43'6.72E	Erven
200	BLAAUWDRIFT	324	0	28°6'45.6S	26°43'1.6E	Erven
201	BLAAUWDRIFT	325	0	28°6'46.27S	26°43'1.82E	Erven
202	BLAAUWDRIFT	477	0	28°6'42.18S	26°43'31.88E	Erven
203	BLAAUWDRIFT	480	0	28°6'40.83S	26°43'29.14E	Erven
204	BLAAUWDRIFT	481	0	28°6'42.66S	26°43'29.64E	Erven
205	BLAAUWDRIFT	340	0	28°6'41.19S	26°43'1.84E	Erven
206	BLAAUWDRIFT	343	0	28°6'39.76S	26°43'3.54E	Erven
207	BLAAUWDRIFT	496	0	28°6'42.62S	26°43'16.55E	Erven

208	BLAAUWDRIFT	499	0	28°6'41.89S	26°43'18.93E	Erven
209	BLAAUWDRIFT	347	0	28°6'37.84S	26°43'6.12E	Erven
210	BLAAUWDRIFT	501	0	28°6'41.56S	26°43'21.04E	Erven
211	BLAAUWDRIFT	463	0	28°6'43.55S	26°43'37.12E	Erven
212	BLAAUWDRIFT	464	0	28°6'42.85S	26°43'36.93E	Erven
213	BLAAUWDRIFT	478	0	28°6'42.42S	26°43'30.76E	Erven
214	BLAAUWDRIFT	479	0	28°6'40.58S	26°43'30.26E	Erven
215	BLAAUWDRIFT	341	0	28°6'40.14S	26°43'1.08E	Erven
216	BLAAUWDRIFT	342	0	28°6'40.04S	26°43'1.88E	Erven
217	BLAAUWDRIFT	497	0	28°6'41.74S	26°43'16.23E	Erven
218	BLAAUWDRIFT	498	0	28°6'42.06S	26°43'17.88E	Erven
219	BLAAUWDRIFT	346	0	28°6'38.31S	26°43'5.47E	Erven
220	BLAAUWDRIFT	500	0	28°6'41.73S	26°43'19.98E	Erven
221	BLAAUWDRIFT	517	0	28°6'32.87S	26°43'35.85E	Erven
222	BLAAUWDRIFT	518	0	28°6'32.27S	26°43'36.18E	Erven
223	BLAAUWDRIFT	5	0	28°6'57.6S	26°42'56.04E	Erven
224	BLAAUWDRIFT	22	0	28°6'57.18S	26°42'52.37E	Erven
225	BLAAUWDRIFT	523	0	28°6'29.99S	26°43'34.66E	Erven
226	BLAAUWDRIFT	526	0	28°6'32.06S	26°43'33.96E	Erven
227	BLAAUWDRIFT	527	0	28°6'32.66S	26°43'33.63E	Erven
228	BLAAUWDRIFT	363	0	28°6'40.51S	26°43'13.19E	Erven
229	BLAAUWDRIFT	366	0	28°6'37.52S	26°43'10.4E	Erven
230	BLAAUWDRIFT	380	0	28°6'43.42S	26°43'7.71E	Erven
231	BLAAUWDRIFT	381	0	28°6'43.01S	26°43'8.34E	Erven
232	BLAAUWDRIFT	539	0	28°6'32.16S	26°43'29.18E	Erven
233	BLAAUWDRIFT	540	0	28°6'31.41S	26°43'29.6E	Erven
234	BLAAUWDRIFT	44	0	28°6'54.32S	26°42'46.12E	Erven
235	BLAAUWDRIFT	45	0	28°6'55.59S	26°42'48.18E	Erven
236	BLAAUWDRIFT	554	0	28°6'32.6S	26°43'25.52E	Erven
237	BLAAUWDRIFT	557	0	28°6'38.76S	26°43'15.19E	Erven
238	BLAAUWDRIFT	65	0	28°6'49.34S	26°42'58.43E	Erven
239	BLAAUWDRIFT	338	0	28°6'42.53S	26°43'2.28E	Erven
240	BLAAUWDRIFT	345	0	28°6'38.79S	26°43'4.84E	Erven
241	BLAAUWDRIFT	494	0	28°6'44.94S	26°43'16.88E	Erven
242	BLAAUWDRIFT	349	0	28°6'36.88S	26°43'7.39E	Erven
243	BLAAUWDRIFT	356	0	28°6'35.39S	26°43'11.45E	Erven
244	BLAAUWDRIFT	503	0	28°6'41.31S	26°43'23.18E	Erven
245	BLAAUWDRIFT	510	0	28°6'37.42S	26°43'33.02E	Erven
246	BLAAUWDRIFT	514	0	28°6'34.66S	26°43'34.87E	Erven
247	BLAAUWDRIFT	8	0	28°6'55.77S	26°42'59.59E	Erven
248	BLAAUWDRIFT	12	0	28°6'51.64S	26°42'59.14E	Erven
249	BLAAUWDRIFT	19	0	28°6'56.18S	26°42'54.88E	Erven
250	BLAAUWDRIFT	25	0	28°6'58.7S	26°42'50.78E	Erven
251	BLAAUWDRIFT	519	0	28°6'31.67S	26°43'36.5E	Erven
252	BLAAUWDRIFT	530	0	28°6'34.45S	26°43'32.66E	Erven
253	BLAAUWDRIFT	359	0	28°6'37.6S	26°43'12.05E	Erven
254	BLAAUWDRIFT	370	0	28°6'38.95S	26°43'7.18E	Erven
255	BLAAUWDRIFT	377	0	28°6'44.68S	26°43'5.84E	Erven
256	BLAAUWDRIFT	536	0	28°6'37.83S	26°43'28.48E	Erven
257	BLAAUWDRIFT	543	0	28°6'29.27S	26°43'30.76E	Erven
258	BLAAUWDRIFT	34	0	28°6'58.46S	26°42'46.85E	Erven
259	BLAAUWDRIFT	41	0	28°6'55.66S	26°42'44.45E	Erven
260	BLAAUWDRIFT	48	0	28°6'55.48S	26°42'49.08E	Erven
261	BLAAUWDRIFT	550	0	28°6'29.84S	26°43'28.02E	Erven
262	BLAAUWDRIFT	561	0	28°6'33.41S	26°43'13.59E	Erven
263	BLAAUWDRIFT	568	0	28°6'34.53S	26°43'17.79E	Erven
264	BLAAUWDRIFT	62	0	28°6'52.45S	26°42'55.18E	Erven
265	BLAAUWDRIFT	69	0	28°6'47.95S	26°42'57.98E	Erven
266	BLAAUWDRIFT	78	0	28°6'45.6S	26°42'55.37E	Erven
267	BLAAUWDRIFT	318	0	28°6'41.59S	26°43'0.3E	Erven



268	BLAAUWDRIFT	320	0	28°6'42.93S	26°43'0.73E	Erven
269	BLAAUWDRIFT	322	0	28°6'44.26S	26°43'1.17E	Erven
270	BLAAUWDRIFT	327	0	28°6'47.61S	26°43'2.26E	Erven
271	BLAAUWDRIFT	329	0	28°6'49.01S	26°43'2.9E	Erven
272	BLAAUWDRIFT	452	0	28°6'45.82S	26°43'34.73E	Erven
273	BLAAUWDRIFT	474	0	28°6'41.93S	26°43'33.17E	Erven
274	BLAAUWDRIFT	476	0	28°6'40.34S	26°43'31.38E	Erven
275	BLAAUWDRIFT	483	0	28°6'41.12S	26°43'28.02E	Erven
276	BLAAUWDRIFT	485	0	28°6'43.11S	26°43'25.46E	Erven
277	BLAAUWDRIFT	337	0	28°6'43.2S	26°43'2.5E	Erven
278	BLAAUWDRIFT	339	0	28°6'41.87S	26°43'2.06E	Erven
279	BLAAUWDRIFT	344	0	28°6'39.24S	26°43'4.18E	Erven
280	BLAAUWDRIFT	489	0	28°6'42.94S	26°43'21.22E	Erven
281	BLAAUWDRIFT	348	0	28°6'37.35S	26°43'6.75E	Erven
282	BLAAUWDRIFT	350	0	28°6'36.4S	26°43'8.04E	Erven
283	BLAAUWDRIFT	511	0	28°6'36.66S	26°43'33.91E	Erven
284	BLAAUWDRIFT	513	0	28°6'35.26S	26°43'34.55E	Erven
285	BLAAUWDRIFT	18	0	28°6'55.82S	26°42'55.65E	Erven
286	BLAAUWDRIFT	20	0	28°6'56.51S	26°42'54.11E	Erven
287	BLAAUWDRIFT	24	0	28°6'57.51S	26°42'49.98E	Erven
288	BLAAUWDRIFT	26	0	28°6'59.51S	26°42'50.84E	Erven
289	BLAAUWDRIFT	360	0	28°6'38.31S	26°43'12.29E	Erven
290	BLAAUWDRIFT	362	0	28°6'39.74S	26°43'12.76E	Erven
291	BLAAUWDRIFT	367	0	28°6'37.16S	26°43'9.51E	Erven
292	BLAAUWDRIFT	369	0	28°6'38.47S	26°43'7.82E	Erven
293	BLAAUWDRIFT	535	0	28°6'37.11S	26°43'29.4E	Erven
294	BLAAUWDRIFT	542	0	28°6'29.98S	26°43'30.38E	Erven
295	BLAAUWDRIFT	544	0	28°6'28.55S	26°43'31.33E	Erven
296	BLAAUWDRIFT	3	0	28°6'58.32S	26°42'53.95E	Erven
297	BLAAUWDRIFT	352	0	28°6'35.61S	26°43'9.48E	Erven
298	BLAAUWDRIFT	354	0	28°6'34.48S	26°43'10.58E	Erven
299	BLAAUWDRIFT	507	0	28°6'38.52S	26°43'29.46E	Erven
300	BLAAUWDRIFT	509	0	28°6'37.73S	26°43'31.79E	Erven
301	BLAAUWDRIFT	14	0	28°6'52.92S	26°42'57.68E	Erven
302	BLAAUWDRIFT	16	0	28°6'54.83S	26°42'57.65E	Erven
303	BLAAUWDRIFT	28	0	28°6'57.95S	26°42'49.08E	Erven
304	BLAAUWDRIFT	30	0	28°6'59.75S	26°42'48.12E	Erven
305	BLAAUWDRIFT	532	0	28°6'35.8S	26°43'31.89E	Erven
306	BLAAUWDRIFT	371	0	28°6'39.43S	26°43'6.54E	Erven
307	BLAAUWDRIFT	373	0	28°6'40.38S	26°43'5.27E	Erven
308	BLAAUWDRIFT	546	0	28°6'26.86S	26°43'29.67E	Erven
309	BLAAUWDRIFT	36	0	28°6'57.39S	26°42'46.26E	Erven
310	BLAAUWDRIFT	38	0	28°6'56.46S	26°42'44.65E	Erven
311	BLAAUWDRIFT	53	0	28°6'54.91S	26°42'51.73E	Erven
312	BLAAUWDRIFT	55	0	28°6'53.2S	26°42'52.19E	Erven
313	BLAAUWDRIFT	384	0	28°6'41.4S	26°43'10.1E	Erven
314	BLAAUWDRIFT	58	0	28°6'52.97S	26°42'53.09E	Erven
315	BLAAUWDRIFT	548	0	28°6'28.42S	26°43'28.8E	Erven
316	BLAAUWDRIFT	563	0	28°6'35.11S	26°43'15.51E	Erven
317	BLAAUWDRIFT	565	0	28°6'33.29S	26°43'15.75E	Erven
318	BLAAUWDRIFT	72	0	28°6'47.26S	26°42'57.74E	Erven
319	BLAAUWDRIFT	74	0	28°6'47S	26°42'55.83E	Erven
320	BLAAUWDRIFT	574	0	28°6'32.49S	26°43'20.53E	Erven
321	BLAAUWDRIFT	576	0	28°6'31.21S	26°43'19.3E	Erven
322	BLAAUWDRIFT	584	0	28°6'28.12S	26°43'23.89E	Erven
323	BLAAUWDRIFT	586	0	28°6'28.01S	26°43'26E	Erven
324	BLAAUWDRIFT	505	0	28°6'41.04S	26°43'25.43E	Erven
325	BLAAUWDRIFT	512	0	28°6'35.86S	26°43'34.22E	Erven
326	BLAAUWDRIFT	10	0	28°6'53.6S	26°42'59.82E	Erven
327	BLAAUWDRIFT	17	0	28°6'55.57S	26°42'56.74E	Erven

328	BLAAUWDRIFT	27	0	28°6'59.51S	26°42'49.37E	Erven
329	BLAAUWDRIFT	521	0	28°6'29.8S	26°43'36.38E	Erven
330	BLAAUWDRIFT	528	0	28°6'33.26S	26°43'33.31E	Erven
331	BLAAUWDRIFT	361	0	28°6'39.03S	26°43'12.53E	Erven
332	BLAAUWDRIFT	368	0	28°6'37.77S	26°43'8.48E	Erven
333	BLAAUWDRIFT	375	0	28°6'41.36S	26°43'4.04E	Erven
334	BLAAUWDRIFT	534	0	28°6'36.65S	26°43'30.22E	Erven
335	BLAAUWDRIFT	545	0	28°6'27.82S	26°43'31.88E	Erven
336	BLAAUWDRIFT	32	0	28°6'59.98S	26°42'45.61E	Erven
337	BLAAUWDRIFT	43	0	28°6'54.46S	26°42'45.01E	Erven
338	BLAAUWDRIFT	50	0	28°6'53.78S	26°42'49.6E	Erven
339	BLAAUWDRIFT	552	0	28°6'31.46S	26°43'27.18E	Erven
340	BLAAUWDRIFT	559	0	28°6'35.03S	26°43'14.11E	Erven
341	BLAAUWDRIFT	566	0	28°6'33.1S	26°43'16.5E	Erven
342	BLAAUWDRIFT	60	0	28°6'53.94S	26°42'54.36E	Erven
343	BLAAUWDRIFT	67	0	28°6'49.08S	26°42'56.51E	Erven
344	BLAAUWDRIFT	76	0	28°6'45.87S	26°42'57.29E	Erven
345	BLAAUWDRIFT	83	0	28°6'43.51S	26°42'54.69E	Erven
346	BLAAUWDRIFT	581	0	28°6'30.06S	26°43'24.57E	Erven
347	BLAAUWDRIFT	591	0	28°6'25.78S	26°43'25.11E	Erven
348	BLAAUWDRIFT	598	0	28°6'23.29S	26°43'26.7E	Erven
349	BLAAUWDRIFT	91	0	28°6'37.35S	26°42'54.54E	Erven
350	BLAAUWDRIFT	98	0	28°6'39.65S	26°42'53.09E	Erven
351	BLAAUWDRIFT	105	0	28°6'38.69S	26°42'49.72E	Erven
352	BLAAUWDRIFT	355	0	28°6'33.94S	26°43'11.26E	Erven
353	BLAAUWDRIFT	506	0	28°6'38.95S	26°43'27.86E	Erven
354	BLAAUWDRIFT	508	0	28°6'38.08S	26°43'30.7E	Erven
355	BLAAUWDRIFT	13	0	28°6'51.99S	26°42'57.4E	Erven
356	BLAAUWDRIFT	15	0	28°6'53.86S	26°42'58.02E	Erven
357	BLAAUWDRIFT	29	0	28°6'58.38S	26°42'48.05E	Erven
358	BLAAUWDRIFT	31	0	28°6'59.99S	26°42'46.95E	Erven
359	BLAAUWDRIFT	533	0	28°6'36.24S	26°43'30.95E	Erven
360	BLAAUWDRIFT	372	0	28°6'39.9S	26°43'5.9E	Erven
361	BLAAUWDRIFT	374	0	28°6'40.84S	26°43'4.65E	Erven
362	BLAAUWDRIFT	35	0	28°6'58.06S	26°42'45.04E	Erven
363	BLAAUWDRIFT	37	0	28°6'57.26S	26°42'44.85E	Erven
364	BLAAUWDRIFT	39	0	28°6'56.22S	26°42'46.2E	Erven
365	BLAAUWDRIFT	52	0	28°6'55.13S	26°42'50.88E	Erven
366	BLAAUWDRIFT	54	0	28°6'53.42S	26°42'51.35E	Erven
367	BLAAUWDRIFT	57	0	28°6'54.34S	26°42'53.42E	Erven
368	BLAAUWDRIFT	547	0	28°6'27.66S	26°43'29.2E	Erven
369	BLAAUWDRIFT	549	0	28°6'29.13S	26°43'28.41E	Erven
370	BLAAUWDRIFT	562	0	28°6'33.49S	26°43'14.98E	Erven
371	BLAAUWDRIFT	564	0	28°6'34.91S	26°43'16.28E	Erven
372	BLAAUWDRIFT	71	0	28°6'47.69S	26°42'56.05E	Erven
373	BLAAUWDRIFT	73	0	28°6'46.56S	26°42'57.52E	Erven
374	BLAAUWDRIFT	575	0	28°6'31.85S	26°43'19.91E	Erven
375	BLAAUWDRIFT	577	0	28°6'29.4S	26°43'21.71E	Erven
376	BLAAUWDRIFT	585	0	28°6'28.68S	26°43'25.63E	Erven
377	BLAAUWDRIFT	587	0	28°6'27.27S	26°43'24.29E	Erven
378	BLAAUWDRIFT	92	0	28°6'38.1S	26°42'54.77E	Erven
379	BLAAUWDRIFT	94	0	28°6'39.64S	26°42'55.19E	Erven
380	BLAAUWDRIFT	111	0	28°6'42.04S	26°42'52.11E	Erven
381	BLAAUWDRIFT	383	0	28°6'41.92S	26°43'9.59E	Erven
382	BLAAUWDRIFT	551	0	28°6'30.56S	26°43'27.63E	Erven
383	BLAAUWDRIFT	553	0	28°6'32.03S	26°43'26.27E	Erven
384	BLAAUWDRIFT	558	0	28°6'35.83S	26°43'14.37E	Erven
385	BLAAUWDRIFT	560	0	28°6'34.22S	26°43'13.84E	Erven
386	BLAAUWDRIFT	59	0	28°6'52.72S	26°42'54.06E	Erven
387	BLAAUWDRIFT	61	0	28°6'53.5S	26°42'55.44E	Erven

388	BLAAUWDRIFT	68	0	28°6'48.65S	26°42'58.2E	Erven
389	BLAAUWDRIFT	70	0	28°6'48.39S	26°42'56.28E	Erven
390	BLAAUWDRIFT	75	0	28°6'46.3S	26°42'55.6E	Erven
391	BLAAUWDRIFT	77	0	28°6'45.17S	26°42'57.06E	Erven
392	BLAAUWDRIFT	84	0	28°6'43.08S	26°42'56.38E	Erven
393	BLAAUWDRIFT	86	0	28°6'42.82S	26°42'54.47E	Erven
394	BLAAUWDRIFT	88	0	28°6'41.62S	26°42'54.52E	Erven
395	BLAAUWDRIFT	90	0	28°6'41.04S	26°42'55.68E	Erven
396	BLAAUWDRIFT	602	0	28°6'20.74S	26°43'29.45E	Erven
397	BLAAUWDRIFT	604	0	28°6'23.5S	26°43'29.71E	Erven
398	BLAAUWDRIFT	611	0	28°6'24.83S	26°43'32.74E	Erven
399	BLAAUWDRIFT	613	0	28°6'23.69S	26°43'34.55E	Erven
400	BLAAUWDRIFT	118	0	28°6'42.53S	26°42'49.51E	Erven
401	BLAAUWDRIFT	141	0	28°6'51.29S	26°42'43.36E	Erven
402	BLAAUWDRIFT	631	0	28°6'16.38S	26°43'33.08E	Erven
403	BLAAUWDRIFT	633	0	28°6'12.73S	26°43'32.47E	Erven
404	BLAAUWDRIFT	640	0	28°6'13.88S	26°43'31E	Erven
405	BLAAUWDRIFT	642	0	28°6'14.71S	26°43'29.18E	Erven
406	BLAAUWDRIFT	142	0	28°6'50.61S	26°42'43.19E	Erven
407	BLAAUWDRIFT	149	0	28°6'48.53S	26°42'42.68E	Erven
408	BLAAUWDRIFT	151	0	28°6'47.53S	26°42'44.11E	Erven
409	BLAAUWDRIFT	668	0	28°6'17.1S	26°43'22.63E	Erven
410	BLAAUWDRIFT	515	0	28°6'34.07S	26°43'35.2E	Erven
411	BLAAUWDRIFT	516	0	28°6'33.47S	26°43'35.53E	Erven
412	BLAAUWDRIFT	6	0	28°6'57.08S	26°42'57.06E	Erven
413	BLAAUWDRIFT	7	0	28°6'56.51S	26°42'58.22E	Erven
414	BLAAUWDRIFT	21	0	28°6'56.83S	26°42'53.22E	Erven
415	BLAAUWDRIFT	23	0	28°6'57.47S	26°42'50.84E	Erven
416	BLAAUWDRIFT	524	0	28°6'30.87S	26°43'34.62E	Erven
417	BLAAUWDRIFT	525	0	28°6'31.46S	26°43'34.29E	Erven
418	BLAAUWDRIFT	364	0	28°6'39.63S	26°43'11.33E	Erven
419	BLAAUWDRIFT	365	0	28°6'38.46S	26°43'10.99E	Erven
420	BLAAUWDRIFT	379	0	28°6'43.84S	26°43'7.09E	Erven
421	BLAAUWDRIFT	382	0	28°6'42.55S	26°43'9.05E	Erven
422	BLAAUWDRIFT	537	0	28°6'34.23S	26°43'27.05E	Erven
423	BLAAUWDRIFT	538	0	28°6'33.09S	26°43'28.73E	Erven
424	BLAAUWDRIFT	541	0	28°6'30.69S	26°43'29.99E	Erven
425	BLAAUWDRIFT	46	0	28°6'54.14S	26°42'47.79E	Erven
426	BLAAUWDRIFT	47	0	28°6'53.95S	26°42'48.69E	Erven
427	BLAAUWDRIFT	555	0	28°6'33.19S	26°43'24.76E	Erven
428	BLAAUWDRIFT	556	0	28°6'37.66S	26°43'20.72E	Erven
429	BLAAUWDRIFT	63	0	28°6'50.44S	26°42'56.99E	Erven
430	BLAAUWDRIFT	64	0	28°6'50.06S	26°42'58.66E	Erven
431	BLAAUWDRIFT	571	0	28°6'34.4S	26°43'18.58E	Erven
432	BLAAUWDRIFT	572	0	28°6'33.82S	26°43'19.55E	Erven
433	BLAAUWDRIFT	79	0	28°6'44.91S	26°42'55.15E	Erven
434	BLAAUWDRIFT	80	0	28°6'44.48S	26°42'56.84E	Erven
435	BLAAUWDRIFT	594	0	28°6'25.1S	26°43'30.41E	Erven
436	BLAAUWDRIFT	595	0	28°6'24.62S	26°43'29.52E	Erven
437	BLAAUWDRIFT	66	0	28°6'49.78S	26°42'56.74E	Erven
438	BLAAUWDRIFT	570	0	28°6'32.54S	26°43'18.34E	Erven
439	BLAAUWDRIFT	573	0	28°6'33.13S	26°43'21.12E	Erven
440	BLAAUWDRIFT	81	0	28°6'43.78S	26°42'56.61E	Erven
441	BLAAUWDRIFT	82	0	28°6'44.21S	26°42'54.92E	Erven
442	BLAAUWDRIFT	592	0	28°6'25.04S	26°43'25.52E	Erven
443	BLAAUWDRIFT	593	0	28°6'25.76S	26°43'27.21E	Erven
444	BLAAUWDRIFT	103	0	28°6'40.09S	26°42'50.86E	Erven
445	BLAAUWDRIFT	104	0	28°6'38.54S	26°42'50.47E	Erven
446	BLAAUWDRIFT	606	0	28°6'26.9S	26°43'34.67E	Erven
447	BLAAUWDRIFT	607	0	28°6'26.42S	26°43'33.34E	Erven

448	BLAAUWDRIFT	115	0	28°6'42.35S	26°42'50.38E	Erven
449	BLAAUWDRIFT	116	0	28°6'43.56S	26°42'50.68E	Erven
450	BLAAUWDRIFT	624	0	28°6'19.92S	26°43'33.61E	Erven
451	BLAAUWDRIFT	625	0	28°6'19.17S	26°43'33.42E	Erven
452	BLAAUWDRIFT	129	0	28°6'47.55S	26°42'49.97E	Erven
453	BLAAUWDRIFT	130	0	28°6'47.42S	26°42'50.66E	Erven
454	BLAAUWDRIFT	637	0	28°6'13.19S	26°43'31.61E	Erven
455	BLAAUWDRIFT	638	0	28°6'13.21S	26°43'29.57E	Erven
456	BLAAUWDRIFT	652	0	28°6'17.78S	26°43'29.05E	Erven
457	BLAAUWDRIFT	655	0	28°6'19S	26°43'26.49E	Erven
458	BLAAUWDRIFT	144	0	28°6'49.6S	26°42'44.63E	Erven
459	BLAAUWDRIFT	145	0	28°6'49.91S	26°42'43.02E	Erven
460	BLAAUWDRIFT	657	0	28°6'19.86S	26°43'27.46E	Erven
461	BLAAUWDRIFT	167	0	28°6'40.88S	26°42'40.6E	Erven
462	BLAAUWDRIFT	169	0	28°6'41.12S	26°42'44.57E	Erven
463	BLAAUWDRIFT	40	0	28°6'55.34S	26°42'46.06E	Erven
464	BLAAUWDRIFT	42	0	28°6'54.75S	26°42'43.93E	Erven
465	BLAAUWDRIFT	49	0	28°6'55.3S	26°42'49.98E	Erven
466	BLAAUWDRIFT	51	0	28°6'53.6S	26°42'50.5E	Erven
467	BLAAUWDRIFT	567	0	28°6'34.72S	26°43'17.03E	Erven
468	BLAAUWDRIFT	569	0	28°6'32.91S	26°43'17.26E	Erven
469	BLAAUWDRIFT	578	0	28°6'30.05S	26°43'22.32E	Erven
470	BLAAUWDRIFT	580	0	28°6'31.33S	26°43'23.55E	Erven
471	BLAAUWDRIFT	583	0	28°6'28.9S	26°43'23.2E	Erven
472	BLAAUWDRIFT	588	0	28°6'26.53S	26°43'24.69E	Erven
473	BLAAUWDRIFT	590	0	28°6'26.51S	26°43'26.82E	Erven
474	BLAAUWDRIFT	597	0	28°6'23.94S	26°43'27.59E	Erven
475	BLAAUWDRIFT	599	0	28°6'22.48S	26°43'27.24E	Erven
476	BLAAUWDRIFT	97	0	28°6'38.1S	26°42'52.7E	Erven
477	BLAAUWDRIFT	99	0	28°6'39.79S	26°42'52.35E	Erven
478	BLAAUWDRIFT	106	0	28°6'40.23S	26°42'50.11E	Erven
479	BLAAUWDRIFT	108	0	28°6'38.83S	26°42'48.98E	Erven
480	BLAAUWDRIFT	110	0	28°6'40.51S	26°42'48.62E	Erven
481	BLAAUWDRIFT	620	0	28°6'21.42S	26°43'33.98E	Erven
482	BLAAUWDRIFT	627	0	28°6'18.81S	26°43'31.24E	Erven
483	BLAAUWDRIFT	629	0	28°6'17.55S	26°43'33.13E	Erven
484	BLAAUWDRIFT	125	0	28°6'45.74S	26°42'50.25E	Erven
485	BLAAUWDRIFT	127	0	28°6'46.06S	26°42'48.87E	Erven
486	BLAAUWDRIFT	134	0	28°6'50.69S	26°42'49.52E	Erven
487	BLAAUWDRIFT	136	0	28°6'52.69S	26°42'44.55E	Erven
488	BLAAUWDRIFT	649	0	28°6'17.17S	26°43'29.4E	Erven
489	BLAAUWDRIFT	651	0	28°6'17.95S	26°43'27.59E	Erven
490	BLAAUWDRIFT	656	0	28°6'19.3S	26°43'28.11E	Erven
491	BLAAUWDRIFT	156	0	28°6'45.21S	26°42'43.91E	Erven
492	BLAAUWDRIFT	85	0	28°6'42.39S	26°42'56.15E	Erven
493	BLAAUWDRIFT	579	0	28°6'30.69S	26°43'22.93E	Erven
494	BLAAUWDRIFT	589	0	28°6'27.26S	26°43'26.41E	Erven
495	BLAAUWDRIFT	596	0	28°6'24.27S	26°43'28.68E	Erven
496	BLAAUWDRIFT	600	0	28°6'21.93S	26°43'28.24E	Erven
497	BLAAUWDRIFT	89	0	28°6'41.7S	26°42'55.93E	Erven
498	BLAAUWDRIFT	96	0	28°6'37.95S	26°42'53.45E	Erven
499	BLAAUWDRIFT	100	0	28°6'38.25S	26°42'51.96E	Erven
500	BLAAUWDRIFT	107	0	28°6'40.38S	26°42'49.37E	Erven
501	BLAAUWDRIFT	109	0	28°6'38.99S	26°42'48.25E	Erven
502	BLAAUWDRIFT	603	0	28°6'22.45S	26°43'29.37E	Erven
503	BLAAUWDRIFT	610	0	28°6'25.61S	26°43'32.93E	Erven
504	BLAAUWDRIFT	621	0	28°6'20.68S	26°43'33.8E	Erven
505	BLAAUWDRIFT	628	0	28°6'18.42S	26°43'33.24E	Erven
506	BLAAUWDRIFT	119	0	28°6'42.69S	26°42'48.64E	Erven
507	BLAAUWDRIFT	126	0	28°6'45.88S	26°42'49.55E	Erven

508	BLAAUWDRIFT	133	0	28°6'48.11S	26°42'46.66E	Erven
509	BLAAUWDRIFT	634	0	28°6'11.33S	26°43'32.02E	Erven
510	BLAAUWDRIFT	641	0	28°6'14.62S	26°43'30.72E	Erven
511	BLAAUWDRIFT	648	0	28°6'16.54S	26°43'29.76E	Erven
512	BLAAUWDRIFT	148	0	28°6'48.22S	26°42'44.28E	Erven
513	BLAAUWDRIFT	164	0	28°6'42.04S	26°42'42.66E	Erven
514	BLAAUWDRIFT	660	0	28°6'20.39S	26°43'26.87E	Erven
515	BLAAUWDRIFT	667	0	28°6'21.23S	26°43'23.68E	Erven
516	BLAAUWDRIFT	113	0	28°6'43.38S	26°42'51.54E	Erven
517	BLAAUWDRIFT	615	0	28°6'23.33S	26°43'32.37E	Erven
518	BLAAUWDRIFT	617	0	28°6'22.18S	26°43'34.18E	Erven
519	BLAAUWDRIFT	120	0	28°6'43.89S	26°42'48.94E	Erven
520	BLAAUWDRIFT	122	0	28°6'43.63S	26°42'47.18E	Erven
521	BLAAUWDRIFT	124	0	28°6'45.65S	26°42'50.95E	Erven
522	BLAAUWDRIFT	137	0	28°6'52.89S	26°42'43.49E	Erven
523	BLAAUWDRIFT	139	0	28°6'51.66S	26°42'45.14E	Erven
524	BLAAUWDRIFT	644	0	28°6'15.29S	26°43'30.46E	Erven
525	BLAAUWDRIFT	646	0	28°6'16.07S	26°43'28.71E	Erven
526	BLAAUWDRIFT	153	0	28°6'47.16S	26°42'42.33E	Erven
527	BLAAUWDRIFT	155	0	28°6'46.14S	26°42'43.83E	Erven
528	BLAAUWDRIFT	158	0	28°6'45.09S	26°42'41.82E	Erven
529	BLAAUWDRIFT	160	0	28°6'44.4S	26°42'41.65E	Erven
530	BLAAUWDRIFT	662	0	28°6'21.29S	26°43'25.65E	Erven
531	BLAAUWDRIFT	664	0	28°6'20.81S	26°43'24.21E	Erven
532	BLAAUWDRIFT	666	0	28°6'22.13S	26°43'24.53E	Erven
533	BLAAUWDRIFT	161	0	28°6'43.71S	26°42'41.48E	Erven
534	BLAAUWDRIFT	163	0	28°6'43.03S	26°42'41.3E	Erven
535	BLAAUWDRIFT	659	0	28°6'19.95S	26°43'25.35E	Erven
536	BLAAUWDRIFT	661	0	28°6'20.87S	26°43'26.22E	Erven
537	BLAAUWDRIFT	426	0	28°6'52.16S	26°43'5.17E	Erven
538	BLAAUWDRIFT	168	0	28°6'41.39S	26°42'43.32E	Erven
539	BLAAUWDRIFT	582	0	28°6'29.33S	26°43'25.37E	Erven
540	BLAAUWDRIFT	87	0	28°6'41.91S	26°42'53.72E	Erven
541	BLAAUWDRIFT	101	0	28°6'38.39S	26°42'51.21E	Erven
542	BLAAUWDRIFT	102	0	28°6'39.94S	26°42'51.6E	Erven
543	BLAAUWDRIFT	608	0	28°6'26.08S	26°43'35.42E	Erven
544	BLAAUWDRIFT	609	0	28°6'25.2S	26°43'34.93E	Erven
545	BLAAUWDRIFT	622	0	28°6'21.07S	26°43'31.8E	Erven
546	BLAAUWDRIFT	623	0	28°6'20.31S	26°43'31.61E	Erven
547	BLAAUWDRIFT	626	0	28°6'19.56S	26°43'31.43E	Erven
548	BLAAUWDRIFT	131	0	28°6'47.24S	26°42'51.35E	Erven
549	BLAAUWDRIFT	132	0	28°6'47.96S	26°42'47.4E	Erven
550	BLAAUWDRIFT	635	0	28°6'11.82S	26°43'31.18E	Erven
551	BLAAUWDRIFT	636	0	28°6'12.31S	26°43'30.15E	Erven
552	BLAAUWDRIFT	653	0	28°6'18.48S	26°43'28.64E	Erven
553	BLAAUWDRIFT	654	0	28°6'18.52S	26°43'27.06E	Erven
554	BLAAUWDRIFT	146	0	28°6'49.23S	26°42'42.85E	Erven
555	BLAAUWDRIFT	147	0	28°6'48.91S	26°42'44.46E	Erven
556	BLAAUWDRIFT	165	0	28°6'42.33S	26°42'41.13E	Erven
557	BLAAUWDRIFT	166	0	28°6'41.65S	26°42'40.96E	Erven
558	BLAAUWDRIFT	357	0	28°6'36.21S	26°43'11.44E	Erven
559	BLAAUWDRIFT	176	0	28°6'39.71S	26°42'44.63E	Erven
560	BLAAUWDRIFT	601	0	28°6'21.36S	26°43'28.9E	Erven
561	BLAAUWDRIFT	93	0	28°6'38.88S	26°42'54.99E	Erven
562	BLAAUWDRIFT	95	0	28°6'39.5S	26°42'53.84E	Erven
563	BLAAUWDRIFT	112	0	28°6'43.21S	26°42'52.44E	Erven
564	BLAAUWDRIFT	114	0	28°6'42.18S	26°42'51.25E	Erven
565	BLAAUWDRIFT	614	0	28°6'24.08S	26°43'32.56E	Erven
566	BLAAUWDRIFT	616	0	28°6'22.94S	26°43'34.36E	Erven
567	BLAAUWDRIFT	618	0	28°6'22.57S	26°43'32.18E	Erven



568	BLAAUWDRIFT	121	0	28°6'42.88S	26°42'47.8E	Erven
569	BLAAUWDRIFT	123	0	28°6'44.11S	26°42'48.03E	Erven
570	BLAAUWDRIFT	138	0	28°6'51.99S	26°42'43.54E	Erven
571	BLAAUWDRIFT	140	0	28°6'50.98S	26°42'44.96E	Erven
572	BLAAUWDRIFT	645	0	28°6'15.91S	26°43'30.13E	Erven
573	BLAAUWDRIFT	647	0	28°6'16.69S	26°43'28.35E	Erven
574	BLAAUWDRIFT	152	0	28°6'46.84S	26°42'43.94E	Erven
575	BLAAUWDRIFT	154	0	28°6'46.47S	26°42'42.16E	Erven
576	BLAAUWDRIFT	157	0	28°6'45.78S	26°42'41.99E	Erven
577	BLAAUWDRIFT	159	0	28°6'44.29S	26°42'43.43E	Erven
578	BLAAUWDRIFT	663	0	28°6'20.37S	26°43'24.78E	Erven
579	BLAAUWDRIFT	665	0	28°6'21.73S	26°43'25.08E	Erven
580	BLAAUWDRIFT	394	0	28°6'45.71S	26°43'7.26E	Erven
581	BLAAUWDRIFT	605	0	28°6'27.49S	26°43'35.91E	Erven
582	BLAAUWDRIFT	612	0	28°6'24.44S	26°43'34.74E	Erven
583	BLAAUWDRIFT	619	0	28°6'21.82S	26°43'31.99E	Erven
584	BLAAUWDRIFT	117	0	28°6'43.72S	26°42'49.81E	Erven
585	BLAAUWDRIFT	128	0	28°6'47.65S	26°42'49.26E	Erven
586	BLAAUWDRIFT	135	0	28°6'52.47S	26°42'45.61E	Erven
587	BLAAUWDRIFT	630	0	28°6'17.91S	26°43'31.27E	Erven
588	BLAAUWDRIFT	632	0	28°6'16.6S	26°43'31.91E	Erven
589	BLAAUWDRIFT	639	0	28°6'14S	26°43'29.25E	Erven
590	BLAAUWDRIFT	643	0	28°6'15.43S	26°43'29.08E	Erven
591	BLAAUWDRIFT	650	0	28°6'17.29S	26°43'27.98E	Erven
592	BLAAUWDRIFT	143	0	28°6'50.29S	26°42'44.79E	Erven
593	BLAAUWDRIFT	150	0	28°6'47.85S	26°42'42.51E	Erven
594	BLAAUWDRIFT	162	0	28°6'43.22S	26°42'42.93E	Erven
595	BLAAUWDRIFT	658	0	28°6'19.5S	26°43'25.95E	Erven
596	BLAAUWDRIFT	669	0	28°6'17.76S	26°43'18.99E	Erven
597	SPOORLEGGERSWONING 54	167	0	28°14'31.28S	26°49'5.12E	Farm
598	KLEIN PALMIET KUIL	407	0	28°10'50.29S	26°39'43.06E	Farm
599	JORDAAN	1	0	28°15'17.16S	26°43'47.79E	Farm
600	BRYAN	561	0	28°7'13.6S	26°38'44.35E	Farm
601	KLEINBEGIN	134	0	28°9'4.15S	26°41'54.47E	Farm
602	JORDAANS RUST	59	0	28°10'41.53S	26°38'15.22E	Farm
603	SIBERIA	464	0	28°13'35.9S	26°46'58.8E	Farm
604	WELGELEGEN	382	0	28°11'57.92S	26°51'12.88E	Farm
605	ENKELDOORN	360	0	28°14'14.79S	26°43'42.33E	Farm
606	MOND VAN DOORNRIVIER	38	0	28°8'23.92S	26°43'7.05E	Farm
607	MOOIVLEI	357	0	28°15'14.66S	26°42'59.69E	Farm
608	NORTIER	361	0	28°14'55.8S	26°43'36.17E	Farm
609	ZOETENDAL	243	0	28°15'41.67S	26°42'15.99E	Farm
610	DANKBAARHEID	16	0	28°9'20.71S	26°38'33.56E	Farm
611	CABRIERE	215	0	28°9'2.41S	26°38'2.64E	Farm
612	TOULON	368	0	28°11'1.33S	26°41'32.34E	Farm
613	PALMIETKUIL	548	0	28°10'51.74S	26°36'57.35E	Farm
614	LEEUBULT	580	0	28°15'2.31S	26°49'22.27E	Farm
615	LEKKERLEWE	643	0	28°13'14.47S	26°48'38.22E	Farm
616	BOSCHLUIS SPRUIT	278	0	28°14'17.58S	26°42'2.55E	Farm
617	MOOIFONTEIN	639	0	28°11'56.99S	26°37'46.93E	Farm
618	BLOEMHOEK	509	0	28°11'0.46S	26°49'41.87E	Farm
619		562	0	28°8'55.91S	26°43'35.17E	Farm
620	DE KLERKS KRAAL	231	0	28°8'56S	26°40'17.46E	Farm
621	HARMONIE	579	0	28°15'16.45S	26°47'58.15E	Farm
622	BRUINTJIES HOOGTE	367	0	28°5'59.67S	26°39'9.89E	Farm
623	MOND VAN DOORNRIVIER	38	0	28°7'37.29S	26°43'25.83E	Farm
624	KLEIN PAN	320	0	28°15'40.29S	26°41'24.72E	Farm



625	LANGLAAGTE	110	0	28°16'33.63S	26°42'52.92E	Farm
626	MIDDELPLAAS	583	0	28°14'43.42S	26°44'40.68E	Farm
627	ZONDERZORG	640	0	28°13'26.88S	26°41'1.58E	Farm
628	HAKKIES	742	0	28°7'49.78S	26°48'34.08E	Farm
629	KAALPAN	65	0	28°4'28.18S	26°41'2.75E	Farm
630	RICHELIEU	135	0	28°13'44.84S	26°49'50.64E	Farm
631	ZONDERZORG	342	0	28°12'23.35S	26°41'1.28E	Farm
632	DAMPLAATS	341	0	28°12'50.38S	26°40'15.15E	Farm
633	PALMIETKUIL	328	0	28°12'14.61S	26°43'22.06E	Farm
634	WELTEVREDEN	443	0	28°12'51.73S	26°47'0.73E	Farm
635	HAKKIES	695	0	28°8'26.64S	26°47'22.29E	Farm
636	DE KLERKS KRAAL	231	0	28°6'1.57S	26°40'34.55E	Farm
637	BRAKLAAGTE	41	0	28°16'5.49S	26°43'24.28E	Farm
638	DIE MOND	479	0	28°11'24.7S	26°40'37.4E	Farm
639	BRAKSPRUIT	121	0	28°14'35.7S	26°43'42.42E	Farm
640	ANNEX GRUSDE	474	0	28°14'3.32S	26°46'38.82E	Farm
641	ANNEX MOOIVLAKTE	208	0	28°15'1.1S	26°46'53.81E	Farm
642	ADAMSONS VLEY	655	0	28°5'27.89S	26°44'12.35E	Farm
643	JONKERS RUST	72	0	28°5'28.67S	26°44'55.43E	Farm
644	BLAAUWDRIFT	188	0	28°6'5.44S	26°43'2.3E	Farm
645	TERRA BLANDA	155	0	28°14'27.37S	26°40'40.43E	Farm
646	HELPMEKAAR	47	0	28°8'43.62S	26°42'40.25E	Farm
647	PAULINA	470	0	28°10'3.5S	26°36'7.2E	Farm
648	STILLE WONING	703	0	28°7'15.1S	26°44'29.27E	Farm
649	VAALBANK	190	0	28°5'41.21S	26°41'53.33E	Farm
650	RONDEHOEK	200	0	28°14'3.04S	26°46'13.33E	Farm
651	WELTEVREDE	638	0	28°11'45.72S	26°48'20.29E	Farm
652	DOORN RIVER	330	0	28°11'36.77S	26°46'43.64E	Farm
653	LEEUWBULT	52	0	28°16'25.04S	26°46'41.28E	Farm
654	VLAKPAN	358	0	28°15'5.49S	26°45'21.88E	Farm
655	DOORNDEEL	236	0	28°14'28.64S	26°48'13.45E	Farm
656	KOVNO	235	0	28°13'48.66S	26°46'45.79E	Farm
657	DIGITO	642	0	28°13'46.78S	26°47'31.5E	Farm
658	MOOIVLAKTE	199	0	28°14'54.45S	26°46'16.84E	Farm
659	FRISGEWAAG	550	0	28°15'41.54S	26°40'35.7E	Farm
660	CARLO	596	0	28°12'18.45S	26°38'51.31E	Farm
661	BRUINTJIES HOOGTE	367	0	28°7'2.93S	26°38'51.72E	Farm
662		734	0	28°7'46.51S	26°45'49.64E	Farm
663		225	0	28°9'42.74S	26°45'34.43E	Farm
664	LEEUWAARDEN	171	0	28°14'6.94S	26°48'9.62E	Farm
665	GRUSDE	229	0	28°14'32.94S	26°46'56.6E	Farm
666	BRUINTJIES HOOGTE	367	0	28°7'36.91S	26°38'57.91E	Farm
667	HELPMEKAAR	47	4	28°9'11.54S	26°42'42.99E	Farm Portion
668	HELPMEKAAR	47	3	28°9'33.4S	26°42'42.11E	Farm Portion
669	LANGLAAGTE	110	1	28°15'34.98S	26°42'57.47E	Farm Portion
670	TERRA BLANDA	155	0	28°14'29.17S	26°40'43.43E	Farm Portion
671	LEEUWAARDEN	171	0	28°14'12.88S	26°48'5.12E	Farm Portion
672	VAALBANK	190	1	28°5'47.81S	26°41'56.27E	Farm Portion
673	MOOIVLAKTE	199	1	28°15'2.66S	26°45'43.42E	Farm Portion
674		225	9	28°11'14.65S	26°46'23.87E	Farm Portion
675	HELPMEKAAR	47	1	28°9'0.68S	26°42'44.66E	Farm Portion
676	HELPMEKAAR	47	0	28°8'9.34S	26°42'36.8E	Farm Portion
677	LEEUWAARDEN	171	1	28°13'57.49S	26°48'37.35E	Farm Portion
678		225	0	28°9'21.35S	26°45'43.33E	Farm Portion
679		225	10	28°11'12.14S	26°46'21.52E	Farm Portion
680		225	2	28°10'56.56S	26°45'8.47E	Farm Portion
681	DOORNDEEL	236	0	28°14'13.45S	26°48'51.77E	Farm Portion
682	DOORN RIVER	330	15	28°11'24.62S	26°46'29.41E	Farm Portion
683	DOORN RIVER	330	12	28°11'17.45S	26°46'25.37E	Farm Portion
684		225	6	28°10'31.05S	26°46'25.18E	Farm Portion

685	DOORN RIVER	330	14	28°11'30.97S	26°46'30.88E	Farm Portion
686	DOORN RIVER	330	13	28°11'49.96S	26°46'33.83E	Farm Portion
687	DOORN RIVER	330	2	28°13'24.57S	26°45'35.68E	Farm Portion
688	ZONDERZORG	342	0	28°12'24.53S	26°41'3.42E	Farm Portion
689	VLAKPAN	358	1	28°15'0.03S	26°45'43.84E	Farm Portion
690	NORTIER	361	0	28°14'53.54S	26°43'10.39E	Farm Portion
691	BRUINTJIES HOOGTE	367	2	28°7'37.22S	26°39'3.95E	Farm Portion
692	BRUINTJIES HOOGTE	367	3	28°7'3.69S	26°38'57.56E	Farm Portion
693	WELTEVREDEN	443	6	28°12'5.29S	26°46'29.87E	Farm Portion
694	DOORN RIVER	330	20	28°12'50.76S	26°46'16.68E	Farm Portion
695	DOORN RIVER	330	1	28°13'38.41S	26°44'39.95E	Farm Portion
696	DAMPLAATS	341	0	28°12'52.5S	26°40'17.79E	Farm Portion
697	WELTEVREDEN	443	9	28°12'24.45S	26°46'26.13E	Farm Portion
698	BRYAN	561	19	28°8'3.03S	26°38'44.43E	Farm Portion
699	BRYAN	561	22	28°7'36.57S	26°38'48.5E	Farm Portion
700	BRYAN	561	36	28°7'5S	26°40'3.82E	Farm Portion
701	BRYAN	561	37	28°7'19.88S	26°39'47.7E	Farm Portion
702	BRYAN	561	10	28°7'20.03S	26°38'19.93E	Farm Portion
703	BRYAN	561	21	28°7'25.4S	26°38'34.29E	Farm Portion
704	BRYAN	561	38	28°7'28.31S	26°39'34.03E	Farm Portion
705	BRYAN	561	39	28°7'33.11S	26°39'19.29E	Farm Portion
706	BRYAN	561	0	28°6'49.66S	26°42'1.97E	Farm Portion
707	MOOIFONTEIN	639	0	28°11'58.33S	26°37'51.6E	Farm Portion
708		734	15	28°7'25.52S	26°45'7.84E	Farm Portion
709		734	0	28°8'12.43S	26°46'57.35E	Farm Portion
710	BRYAN	561	0	28°7'16.95S	26°40'44.96E	Farm Portion
711	LEEUBULT	580	0	28°14'57.02S	26°49'22.84E	Farm Portion
712	WELTEVREDE	638	0	28°11'44.11S	26°48'20.49E	Farm Portion
713		734	20	28°8'33.89S	26°44'59.49E	Farm Portion
714		734	12	28°7'51.5S	26°45'48.09E	Farm Portion
715		734	21	28°8'18.83S	26°45'50.68E	Farm Portion
716		734	14	28°7'53.57S	26°45'33.42E	Farm Portion
717	HAKKIES	742	0	28°7'51.02S	26°48'37.61E	Farm Portion
718	BLAAUWDRIFT	188	2	28°5'50.87S	26°43'0.52E	Farm Portion
719	CABRIERE	215	0	28°9'2.41S	26°38'2.64E	Farm Portion
720		225	8	28°8'41.4S	26°46'11.42E	Farm Portion
721		225	1	28°9'52.47S	26°43'55.52E	Farm Portion
722	GRUSDE	229	0	28°14'31.77S	26°47'0.2E	Farm Portion
723	MOND VAN DOORNRIVIER	38	2	28°7'2.07S	26°43'22.37E	Farm Portion
724	KAALPAN	65	1	28°4'42.26S	26°39'55.5E	Farm Portion
725	JONKERS RUST	72	0	28°6'10.72S	26°44'50.84E	Farm Portion
726	MOOIVLAKTE	199	3	28°14'44.54S	26°45'49.7E	Farm Portion
727		225	3	28°9'18.75S	26°48'20.13E	Farm Portion
728	DE KLERKS KRAAL	231	1	28°8'22.86S	26°41'3.24E	Farm Portion
729	MOND VAN DOORNRIVIER	38	0	28°8'24.95S	26°43'5.28E	Farm Portion
730	BRAKLAAGTE	41	0	28°15'51.22S	26°43'26.77E	Farm Portion
731	KAALPAN	65	3	28°4'20.85S	26°41'20.52E	Farm Portion
732	RICHELIEU	135	0	28°13'44.84S	26°49'50.64E	Farm Portion
733	LEEUWAARDEN	171	0	28°13'49.7S	26°48'50.73E	Farm Portion
734	MOOIVLAKTE	199	0	28°14'52.53S	26°46'15.78E	Farm Portion
735	DOORNDEEL	236	0	28°14'36.37S	26°47'56.95E	Farm Portion
736	DOORN RIVER	330	0	28°11'44.59S	26°46'55.11E	Farm Portion
737	DOORN RIVER	330	0	28°11'35.78S	26°46'51.27E	Farm Portion
738	DOORN RIVER	330	11	28°10'1.71S	26°49'31.71E	Farm Portion
739	DANKBAARHEID	16	0	28°9'20.71S	26°38'33.56E	Farm Portion
740	MOND VAN DOORNRIVIER	38	0	28°7'40.55S	26°43'26.14E	Farm Portion
741	LEEUBULT	52	0	28°16'25.23S	26°46'41.24E	Farm Portion

742	KAALPAN	65	0	28°4'51.49S	26°41'33.11E	Farm Portion
743	KAALPAN	65	2	28°3'57.37S	26°41'23.5E	Farm Portion
744	JONKERS RUST	72	1	28°5'3.84S	26°44'58.83E	Farm Portion
745	BLAAUWDRIIFT	188	3	28°6'42.72S	26°43'11.8E	Farm Portion
746	JORDAAN	1	1	28°15'17.52S	26°44'2.52E	Farm Portion
747	KLEINBEGIN	134	0	28°9'4.15S	26°41'54.47E	Farm Portion
748	SPOORLEGGERSWONING 54	167	0	28°14'31.28S	26°49'5.12E	Farm Portion
749	ANNEX MOOIVLAKTE	208	0	28°14'55.38S	26°46'55.43E	Farm Portion
750		225	15	28°8'42.73S	26°45'5.07E	Farm Portion
751		225	4	28°10'18.54S	26°43'4.27E	Farm Portion
752		225	12	28°11'15.13S	26°46'23.61E	Farm Portion
753	DE KLERKS KRAAL	231	8	28°6'2.67S	26°40'7.76E	Farm Portion
754	DOORNDEEL	236	1	28°14'22.28S	26°48'32.56E	Farm Portion
755	BOSCHLUIS SPRUIT	278	1	28°13'43.4S	26°42'2.64E	Farm Portion
756	JORDAAN	1	0	28°15'16.69S	26°43'28.76E	Farm Portion
757	JORDAANS RUST	59	0	28°10'41.53S	26°38'15.22E	Farm Portion
758	BRAKSPRUIT	121	0	28°14'35.7S	26°43'42.42E	Farm Portion
759	RONDEHOEK	200	0	28°14'2.02S	26°46'18.61E	Farm Portion
760	RONDEHOEK	200	1	28°14'8.25S	26°45'57.85E	Farm Portion
761		225	11	28°11'16.42S	26°46'24.77E	Farm Portion
762	DE KLERKS KRAAL	231	7	28°7'35.74S	26°41'4.73E	Farm Portion
763	KOVNO	235	0	28°13'45.22S	26°46'47.94E	Farm Portion
764	DE KLERKS KRAAL	231	0	28°8'56.96S	26°39'37.87E	Farm Portion
765	BOSCHLUIS SPRUIT	278	2	28°14'53.41S	26°41'38.43E	Farm Portion
766	DOORN RIVER	330	5	28°10'36.36S	26°47'50.16E	Farm Portion
767	DOORN RIVER	330	10	28°11'14.22S	26°48'1.3E	Farm Portion
768	VLAKPAN	358	0	28°15'5.2S	26°45'24.87E	Farm Portion
769	ENKELDOORN	360	0	28°14'14.79S	26°43'42.33E	Farm Portion
770	DE KLERKS KRAAL	231	5	28°6'24.8S	26°41'5.89E	Farm Portion
771	ZOETENDAL	243	1	28°15'38.1S	26°42'1.79E	Farm Portion
772	PALMIETKUIL	328	1	28°12'29.56S	26°42'43.61E	Farm Portion
773	PALMIETKUIL	328	6	28°10'59.06S	26°43'17.94E	Farm Portion
774	DOORN RIVER	330	19	28°11'28.61S	26°46'54.71E	Farm Portion
775	DOORN RIVER	330	5	28°11'29.56S	26°47'27.96E	Farm Portion
776	KLEIN PALMIET KUIL	407	1	28°10'53.17S	26°39'15.88E	Farm Portion
777	WELTEVREDEN	443	3	28°12'8.35S	26°46'27.73E	Farm Portion
778	WELTEVREDEN	443	2	28°13'25.59S	26°46'8.54E	Farm Portion
779	BRYAN	561	12	28°8'6.87S	26°39'5.62E	Farm Portion
780	VLAKPAN	358	2	28°15'15.25S	26°45'39.94E	Farm Portion
781	NORTIER	361	1	28°14'57.8S	26°43'59.01E	Farm Portion
782	TOULON	368	0	28°11'2.39S	26°41'32.01E	Farm Portion
783	WELGELEGEN	382	10	28°12'22.92S	26°49'21.08E	Farm Portion
784	WELTEVREDEN	443	5	28°11'18.56S	26°47'53.3E	Farm Portion
785	PAULINA	470	0	28°10'3.5S	26°36'7.2E	Farm Portion
786	PALMIETKUIL	548	1	28°11'0.97S	26°37'29.64E	Farm Portion
787	FRISGEWAAG	550	0	28°15'23.37S	26°40'28.76E	Farm Portion
788	BRYAN	561	26	28°6'48.68S	26°42'32.27E	Farm Portion
789	BRYAN	561	27	28°6'36.6S	26°42'5.85E	Farm Portion
790	BRYAN	561	29	28°6'55.55S	26°41'53.55E	Farm Portion
791	BRYAN	561	31	28°7'1.65S	26°41'26.38E	Farm Portion
792	BRYAN	561	0	28°7'1.35S	26°40'29.5E	Farm Portion
793		562	4	28°9'0.64S	26°44'3.56E	Farm Portion
794		562	6	28°9'4.17S	26°43'29.51E	Farm Portion
795	CARLO	596	0	28°12'20S	26°38'57.07E	Farm Portion
796	ADAMSONS VLEY	655	1	28°5'4.99S	26°43'23.63E	Farm Portion
797		734	22	28°8'2.73S	26°46'7.81E	Farm Portion
798		734	6	28°7'59.09S	26°46'51.65E	Farm Portion
799	RONDEHOEK	200	3	28°14'4.56S	26°45'59.33E	Farm Portion
800		225	14	28°9'31.88S	26°46'59.72E	Farm Portion

801	DE KLERKS KRAAL	231	4	28°5'35.52S	26°41'3.33E	Farm Portion
802	DE KLERKS KRAAL	231	6	28°9'36.64S	26°40'42.9E	Farm Portion
803	ZOETENDAL	243	0	28°15'45.24S	26°42'30.19E	Farm Portion
804	BOSCHLUIS SPRUIT	278	0	28°14'54.07S	26°42'28.2E	Farm Portion
805	PALMIETKUIL	328	0	28°11'33.44S	26°43'6.46E	Farm Portion
806	PALMIETKUIL	328	5	28°13'23.11S	26°43'40.75E	Farm Portion
807	DOORN RIVER	330	3	28°12'4.99S	26°46'5.71E	Farm Portion
808	WELGELEGEN	382	0	28°12'46.34S	26°49'8.24E	Farm Portion
809	KLEIN PALMIET KUIL	407	0	28°10'45.41S	26°40'23.46E	Farm Portion
810	BLOEMHOEK	509	5	28°11'58.44S	26°49'16.19E	Farm Portion
811	FRISGEWAAG	550	1	28°15'55.12S	26°40'52.99E	Farm Portion
812	BRYAN	561	28	28°7'9.51S	26°42'18.87E	Farm Portion
813	BRYAN	561	30	28°7'25.17S	26°41'52.61E	Farm Portion
814		562	5	28°9'0.38S	26°43'47.09E	Farm Portion
815		562	8	28°8'28.88S	26°43'32.58E	Farm Portion
816		562	0	28°8'37.06S	26°42'58.77E	Farm Portion
817	HARMONIE	579	0	28°15'16.03S	26°47'57.43E	Farm Portion
818	HARMONIE	579	1	28°15'24.55S	26°48'11.97E	Farm Portion
819	ADAMSONS VLEY	655	2	28°5'40.56S	26°43'53.66E	Farm Portion
820		734	23	28°8'11.86S	26°46'51.51E	Farm Portion
821		734	7	28°7'45.9S	26°46'39.79E	Farm Portion
822	BRYAN	561	33	28°7'12.68S	26°40'54.15E	Farm Portion
823	BRYAN	561	40	28°6'57.76S	26°39'32.09E	Farm Portion
824	BRYAN	561	0	28°6'51.18S	26°38'18.18E	Farm Portion
825		562	7	28°8'58.23S	26°43'11.82E	Farm Portion
826		562	2	28°8'23.76S	26°44'8.01E	Farm Portion
827	ZONDERZORG	640	0	28°13'27.93S	26°41'4.79E	Farm Portion
828	HAKKIES	695	1	28°8'27.93S	26°47'9.04E	Farm Portion
829		734	17	28°7'58.83S	26°45'9.08E	Farm Portion
830		734	4	28°7'47.85S	26°47'25.86E	Farm Portion
831	BRUINTJIES HOOGTE	367	4	28°5'56.09S	26°39'24.02E	Farm Portion
832	WELGELEGEN	382	0	28°13'8.98S	26°49'23.37E	Farm Portion
833	KLEIN PALMIET KUIL	407	2	28°10'49.44S	26°40'19.97E	Farm Portion
834	WELTEVREDEN	443	4	28°10'49.99S	26°48'35E	Farm Portion
835	WELTEVREDEN	443	14	28°12'41.95S	26°46'53.61E	Farm Portion
836	KLEIN PAN	320	0	28°15'40.29S	26°41'24.72E	Farm Portion
837	DOORN RIVER	330	18	28°11'42.62S	26°46'50.1E	Farm Portion
838	DOORN RIVER	330	16	28°11'41.55S	26°46'59.81E	Farm Portion
839	DOORN RIVER	330	8	28°11'49.98S	26°46'31.93E	Farm Portion
840	DOORN RIVER	330	0	28°11'18.29S	26°46'54.72E	Farm Portion
841	MOOIVLEI	357	0	28°15'14.66S	26°42'59.69E	Farm Portion
842	ANNEX GRUSDE	474	0	28°14'10.11S	26°46'44.34E	Farm Portion
843	DIE MOND	479	0	28°11'28.8S	26°40'38.86E	Farm Portion
844	BLOEMHOEK	509	0	28°11'7.14S	26°49'28.32E	Farm Portion
845	BLOEMHOEK	509	8	28°10'47.92S	26°48'38.55E	Farm Portion
846	BRYAN	561	18	28°7'53.15S	26°38'19.83E	Farm Portion
847	BRYAN	561	32	28°7'19.67S	26°41'18.93E	Farm Portion
848	BRYAN	561	34	28°7'40.46S	26°40'37.79E	Farm Portion
849	BRYAN	561	41	28°7'41.12S	26°40'55.88E	Farm Portion
850	BRYAN	561	0	28°6'49.06S	26°40'22.95E	Farm Portion
851	BRYAN	561	0	28°7'12.58S	26°41'1.09E	Farm Portion
852	BRYAN	561	0	28°7'36.26S	26°40'0.65E	Farm Portion
853		562	10	28°8'28.2S	26°43'20.17E	Farm Portion
854	LEKKERLEWE	643	0	28°13'12.61S	26°48'38.46E	Farm Portion
855		562	1	28°8'12.55S	26°43'44.59E	Farm Portion
856	MIDDELPLAAS	583	0	28°14'39.24S	26°44'40.42E	Farm Portion
857	DIGITO	642	0	28°13'45.85S	26°47'31.25E	Farm Portion
858	HAKKIES	695	4	28°8'25.12S	26°46'34.06E	Farm Portion
859	STILLE WONING	703	0	28°7'15.1S	26°44'29.27E	Farm Portion
860		734	8	28°7'57.09S	26°46'24.68E	Farm Portion

861		734	10	28°7'44.91S	26°46'3E	Farm Portion
862		734	16	28°7'42.84S	26°45'2.13E	Farm Portion
863		734	18	28°8'11.81S	26°45'15.19E	Farm Portion
864	ADAMSONS VLEY	655	0	28°5'25.31S	26°44'10.67E	Farm Portion
865		734	5	28°7'54.77S	26°47'8.16E	Farm Portion
866	PALMIETKUIL	328	4	28°12'16.26S	26°44'40E	Farm Portion
867	DOORN RIVER	330	17	28°11'29.39S	26°46'29.84E	Farm Portion
868	DOORN RIVER	330	3	28°11'53.88S	26°46'34.61E	Farm Portion
869	DOORN RIVER	330	21	28°9'57.98S	26°48'51.1E	Farm Portion
870	BRUINTJIES HOOGTE	367	0	28°5'55.38S	26°38'57.14E	Farm Portion
871	DIE MOND	479	1	28°10'56.05S	26°40'27.2E	Farm Portion
872	BRYAN	561	35	28°7'9.3S	26°40'34.93E	Farm Portion
873	BRYAN	561	0	28°7'48.2S	26°40'28.83E	Farm Portion
874		562	0	28°8'44.25S	26°43'53.53E	Farm Portion
875		562	9	28°9'17.13S	26°44'8.6E	Farm Portion
876		562	3	28°8'50.91S	26°44'24.09E	Farm Portion
877	HAKKIES	695	2	28°8'20.95S	26°47'46.58E	Farm Portion
878		734	19	28°7'20.54S	26°45'23.18E	Farm Portion
879		734	25	28°7'41.24S	26°47'52.89E	Farm Portion
880	BLAAUWDRIFT	881	0	28°6'48.03S	26°42'53.57E	Public Place
881	BLAAUWDRIFT	878	0	28°7'4.24S	26°42'49.33E	Public Place
882	BLAAUWDRIFT	879	0	28°6'46.22S	26°42'46.58E	Public Place

Development footprint<sup>1</sup> vertices:  
No development footprint(s) specified.

### Wind and Solar developments with an approved Environmental Authorisation or applications under consideration within 30 km of the proposed area

No	EIA Reference No	Classification	Status of application	Distance from proposed area (km)
1	14/12/16/3/3/1/1444	Solar PV	Approved	24.8
2	12/12/20/2669/A	Solar PV	Approved	0
3	12/12/20/2666	Solar PV	Approved	0
4	12/12/20/2668	Solar PV	Approved	0
5	12/12/20/2666/A	Solar PV	Approved	0
6	12/12/20/2667	Solar PV	Approved	0
7	14/12/16/3/3/1/1471	Solar PV	Approved	15.6
8	12/12/20/2669	Solar PV	Approved	0
9	14/12/16/3/3/1/1472	Solar PV	Approved	18

### Environmental Management Frameworks relevant to the application

No intersections with EMF areas found.

<sup>1</sup> “development footprint”, means the area within the site on which the development will take place and includes all ancillary developments for example roads, power lines, boundary walls, paving etc. which require vegetation clearance or which will be disturbed and for which the application has been submitted.

## Environmental screening results and assessment outcomes

The following sections contain a summary of any development incentives, restrictions, exclusions or prohibitions that apply to the proposed development site as well as the most environmental sensitive features on the site based on the site sensitivity screening results for the application classification that was selected. The application classification selected for this report is:

**Mining | Production Right | Gas or Oil Terrestrial.**

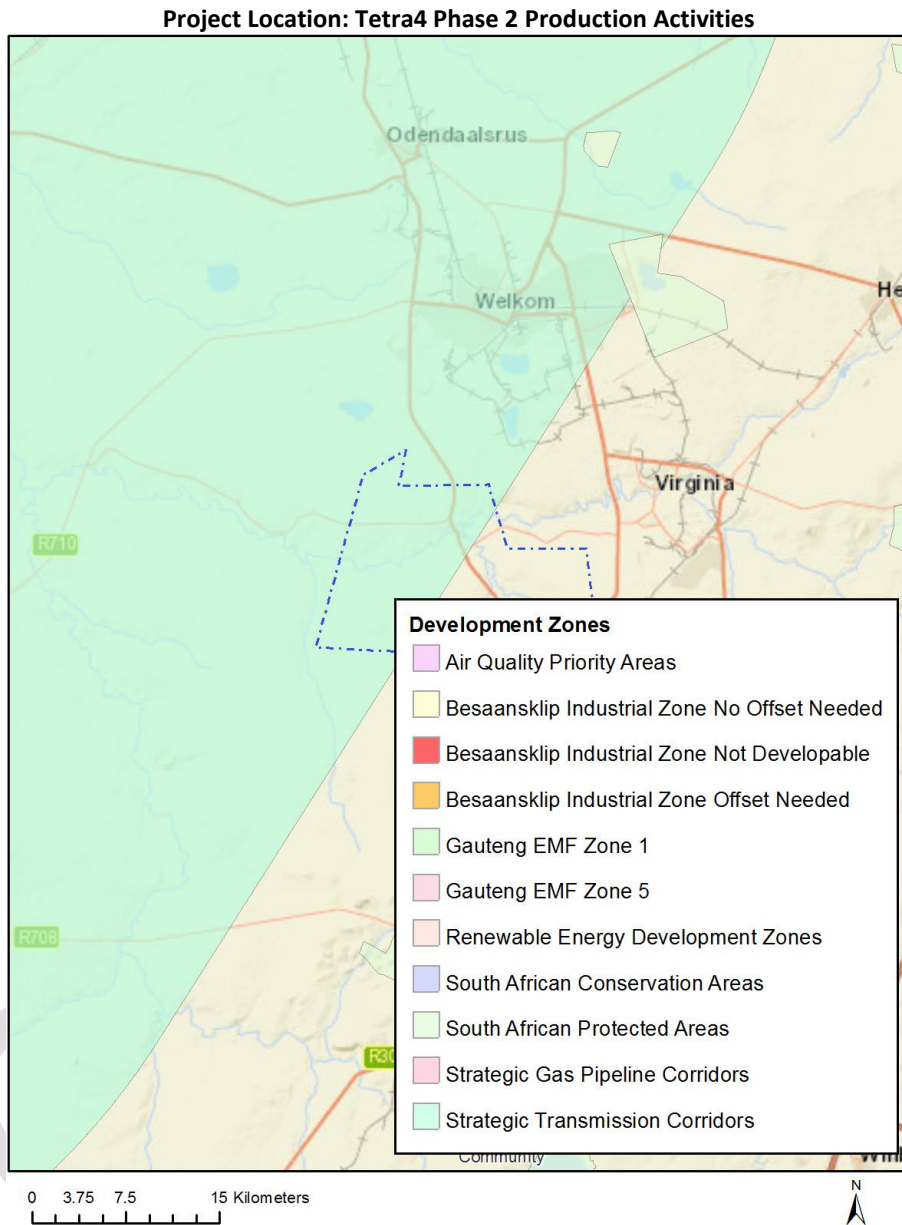
### Relevant development incentives, restrictions, exclusions or prohibitions

The following development incentives, restrictions, exclusions or prohibitions and their implications that apply to this site are indicated below.

Incentive , restriction or prohibition	Implication
Strategic Transmission Corridor-Central corridor	<a href="https://screening.environment.gov.za/ScreeningDownloads/DevelopmentZones/Combined_EGI.pdf">https://screening.environment.gov.za/ScreeningDownloads/DevelopmentZones/Combined_EGI.pdf</a>



Map indicating proposed development footprint within applicable development incentive, restriction, exclusion or prohibition zones



**Proposed Development Area Environmental Sensitivity**

The following summary of the development site environmental sensitivities is identified. Only the highest environmental sensitivity is indicated. The footprint environmental sensitivities for the proposed development footprint as identified, are indicative only and must be verified on site by a suitably qualified person before the specialist assessments identified below can be confirmed.

Theme	Very High sensitivity	High sensitivity	Medium sensitivity	Low sensitivity
Agriculture Theme		X		
Animal Species Theme			X	

Aquatic Biodiversity Theme	X			
Archaeological and Cultural Heritage Theme		X		
Civil Aviation Theme		X		
Defence Theme				X
Paleontology Theme	X			
Plant Species Theme				X
Terrestrial Biodiversity Theme	X			

### Specialist assessments identified

Based on the selected classification, and the environmental sensitivities of the proposed development footprint, the following list of specialist assessments have been identified for inclusion in the assessment report. It is the responsibility of the EAP to confirm this list and to motivate in the assessment report, the reason for not including any of the identified specialist study including the provision of photographic evidence of the site situation.

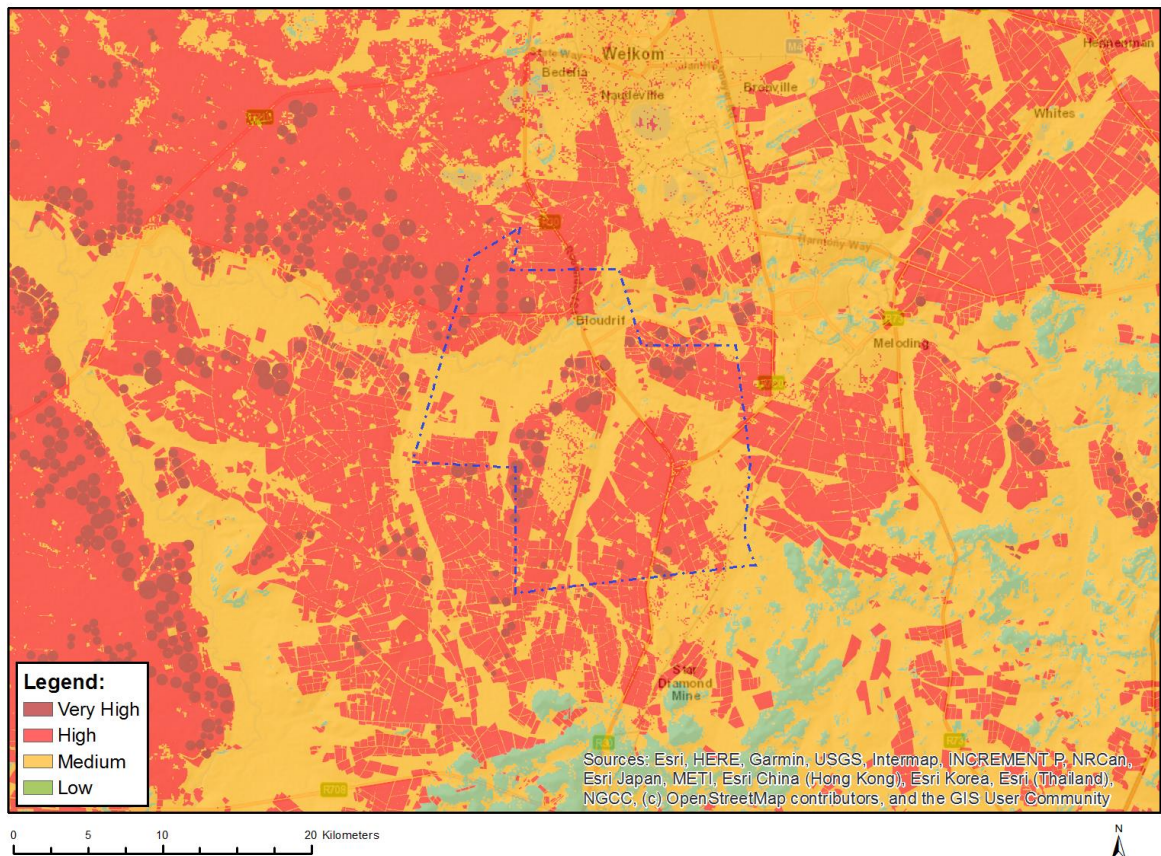
<b>N o</b>	<b>Specialist assessment</b>	<b>Assessment Protocol</b>
1	Agricultural Impact Assessment	<a href="https://screening.environment.gov.za/ScreeningDownloads/AssessmentProtocols/Gazetted_General_Agriculture_Assessment_Protocols.pdf">https://screening.environment.gov.za/ScreeningDownloads/AssessmentProtocols/Gazetted_General_Agriculture_Assessment_Protocols.pdf</a>
2	Landscape/Visual Impact Assessment	<a href="https://screening.environment.gov.za/ScreeningDownloads/AssessmentProtocols/Gazetted_General_Requirement_Assessment_Protocols.pdf">https://screening.environment.gov.za/ScreeningDownloads/AssessmentProtocols/Gazetted_General_Requirement_Assessment_Protocols.pdf</a>
3	Archaeological and Cultural Heritage Impact Assessment	<a href="https://screening.environment.gov.za/ScreeningDownloads/AssessmentProtocols/Gazetted_General_Requirement_Assessment_Protocols.pdf">https://screening.environment.gov.za/ScreeningDownloads/AssessmentProtocols/Gazetted_General_Requirement_Assessment_Protocols.pdf</a>
4	Palaeontology Impact Assessment	<a href="https://screening.environment.gov.za/ScreeningDownloads/AssessmentProtocols/Gazetted_General_Requirement_Assessment_Protocols.pdf">https://screening.environment.gov.za/ScreeningDownloads/AssessmentProtocols/Gazetted_General_Requirement_Assessment_Protocols.pdf</a>
5	Terrestrial Biodiversity Impact Assessment	<a href="https://screening.environment.gov.za/ScreeningDownloads/AssessmentProtocols/Gazetted_Terrestrial_Biodiversity_Assessment_Protocols.pdf">https://screening.environment.gov.za/ScreeningDownloads/AssessmentProtocols/Gazetted_Terrestrial_Biodiversity_Assessment_Protocols.pdf</a>
6	Aquatic Biodiversity Impact Assessment	<a href="https://screening.environment.gov.za/ScreeningDownloads/AssessmentProtocols/Gazetted_Aquatic_Biodiversity_Assessment_Protocols.pdf">https://screening.environment.gov.za/ScreeningDownloads/AssessmentProtocols/Gazetted_Aquatic_Biodiversity_Assessment_Protocols.pdf</a>
7	Hydrology	<a href="https://screening.environment.gov.za/ScreeningDownloads/AssessmentProtocols">https://screening.environment.gov.za/ScreeningDownloads/AssessmentProtocols</a>

	Assessment	<a href="#">/Gazetted General Requirement Assessment Protocols.pdf</a>
8	RFI Assessment	<a href="https://screening.environment.gov.za/ScreeningDownloads/AssessmentProtocols/Gazetted_General_Requirement_Assessment_Protocols.pdf">https://screening.environment.gov.za/ScreeningDownloads/AssessmentProtocols/Gazetted General Requirement Assessment Protocols.pdf</a>
9	Noise Impact Assessment	<a href="https://screening.environment.gov.za/ScreeningDownloads/AssessmentProtocols/Gazetted_Noise_Impacts_Assessment_Protocol.pdf">https://screening.environment.gov.za/ScreeningDownloads/AssessmentProtocols/Gazetted Noise Impacts Assessment Protocol.pdf</a>
10	Geotechnical Assessment	<a href="https://screening.environment.gov.za/ScreeningDownloads/AssessmentProtocols/Gazetted_General_Requirement_Assessment_Protocols.pdf">https://screening.environment.gov.za/ScreeningDownloads/AssessmentProtocols/Gazetted General Requirement Assessment Protocols.pdf</a>
11	Health Impact Assessment	<a href="https://screening.environment.gov.za/ScreeningDownloads/AssessmentProtocols/Gazetted_General_Requirement_Assessment_Protocols.pdf">https://screening.environment.gov.za/ScreeningDownloads/AssessmentProtocols/Gazetted General Requirement Assessment Protocols.pdf</a>
12	Ambient Air Quality Impact Assessment	<a href="https://screening.environment.gov.za/ScreeningDownloads/AssessmentProtocols/Gazetted_General_Requirement_Assessment_Protocols.pdf">https://screening.environment.gov.za/ScreeningDownloads/AssessmentProtocols/Gazetted General Requirement Assessment Protocols.pdf</a>
13	Plant Species Assessment	<a href="https://screening.environment.gov.za/ScreeningDownloads/AssessmentProtocols/Gazetted_Plant_Species_Assessment_Protocols.pdf">https://screening.environment.gov.za/ScreeningDownloads/AssessmentProtocols/Gazetted Plant Species Assessment Protocols.pdf</a>
14	Animal Species Assessment	<a href="https://screening.environment.gov.za/ScreeningDownloads/AssessmentProtocols/Gazetted_Animal_Species_Assessment_Protocols.pdf">https://screening.environment.gov.za/ScreeningDownloads/AssessmentProtocols/Gazetted Animal Species Assessment Protocols.pdf</a>

## Results of the environmental sensitivity of the proposed area.

The following section represents the results of the screening for environmental sensitivity of the proposed site for relevant environmental themes associated with the project classification. It is the duty of the EAP to ensure that the environmental themes provided by the screening tool are comprehensive and complete for the project. Refer to the disclaimer.

### MAP OF RELATIVE AGRICULTURE THEME SENSITIVITY



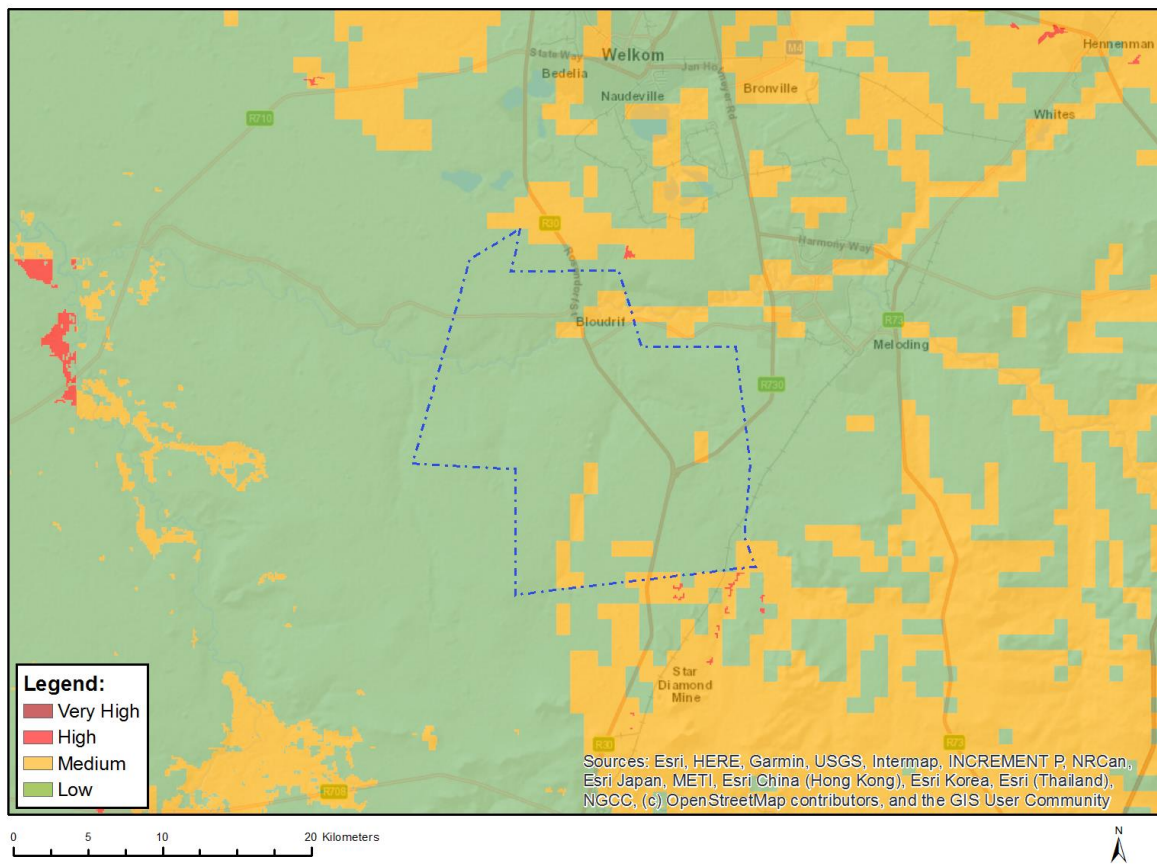
Very High sensitivity	High sensitivity	Medium sensitivity	Low sensitivity
	X		

#### Sensitivity Features:

Sensitivity	Feature(s)
High	Land capability;09. Moderate-High/10. Moderate-High
Low	Land capability;01. Very low/02. Very low/03. Low-Very low/04. Low-Very low/05. Low
Medium	Land capability;06. Low-Moderate/07. Low-Moderate/08. Moderate



## MAP OF RELATIVE ANIMAL SPECIES THEME SENSITIVITY



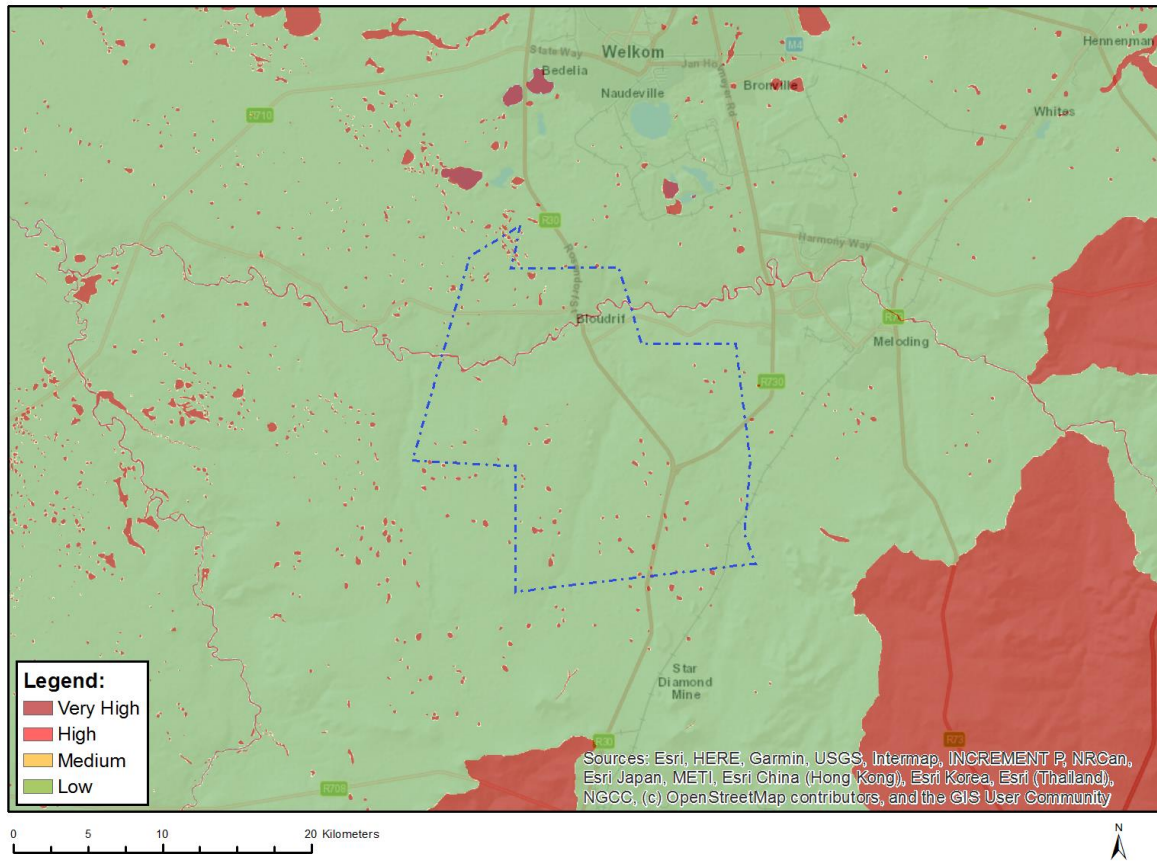
Where only a sensitive plant unique number or sensitive animal unique number is provided in the screening report and an assessment is required, the environmental assessment practitioner (EAP) or specialist is required to email SANBI at [eiadatarequests@sanbi.org.za](mailto:eiadatarequests@sanbi.org.za) listing all sensitive species with their unique identifiers for which information is required. The name has been withheld as the species may be prone to illegal harvesting and must be protected. SANBI will release the actual species name after the details of the EAP or specialist have been documented.

Very High sensitivity	High sensitivity	Medium sensitivity	Low sensitivity
		X	

### Sensitivity Features:

Sensitivity	Feature(s)
Low	Low sensitivity
Medium	Aves-Circus ranivorus
Medium	Mammalia-Hydrictis maculicollis

## MAP OF RELATIVE AQUATIC BIODIVERSITY THEME SENSITIVITY



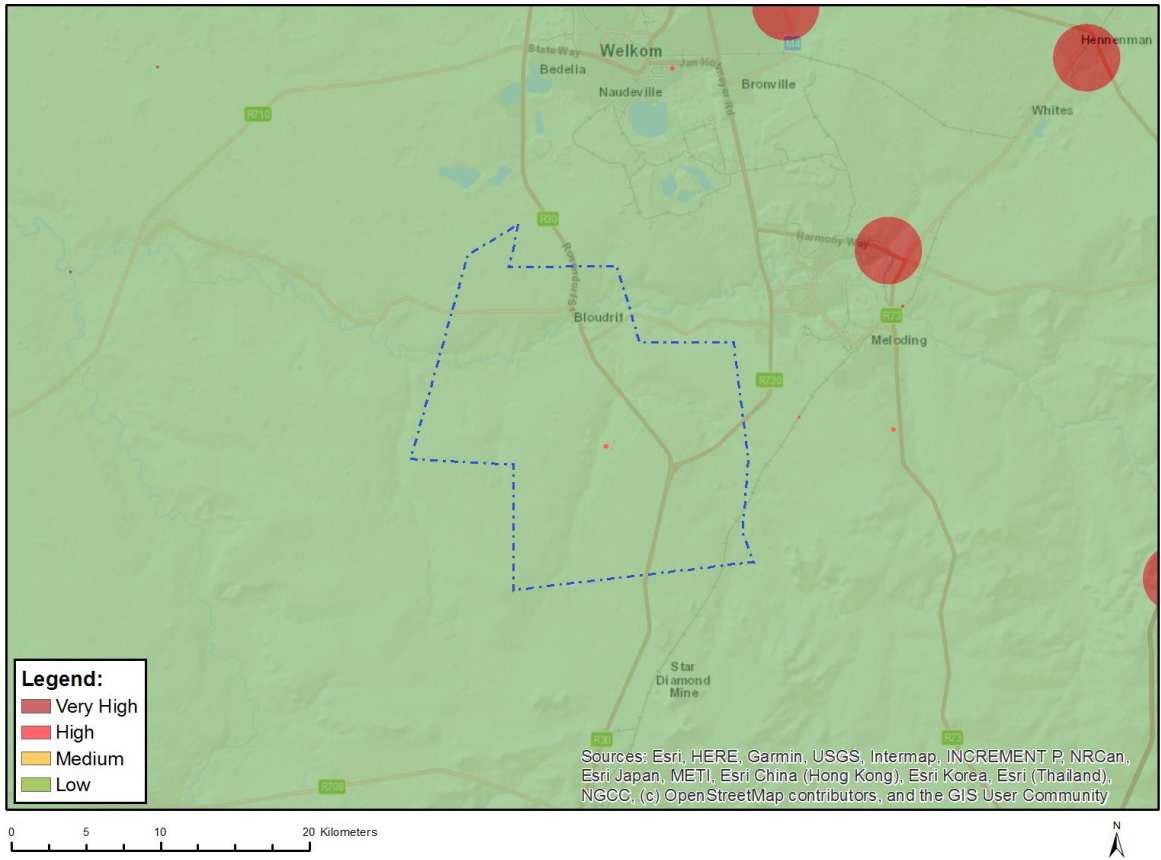
Very High sensitivity	High sensitivity	Medium sensitivity	Low sensitivity
X			

### Sensitivity Features:

Sensitivity	Feature(s)
Low	Low sensitivity
Very High	Wetlands and Estuaries



# MAP OF RELATIVE ARCHAEOLOGICAL AND CULTURAL HERITAGE THEME SENSITIVITY

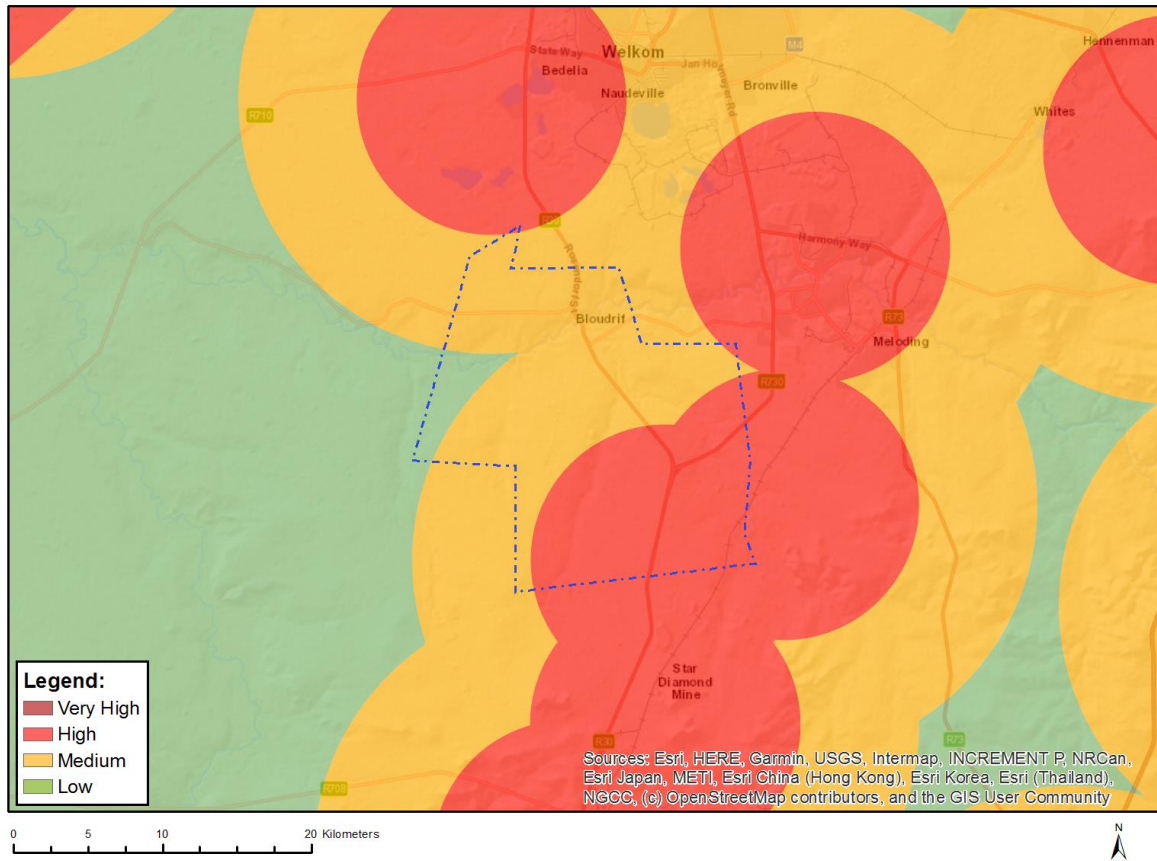


Very High sensitivity	High sensitivity	Medium sensitivity	Low sensitivity
	X		

## Sensitivity Features:

Sensitivity	Feature(s)
High	Within 150m of a Grade IIIa Heritage site
High	Within 50m of a Grade IIIc Heritage site
Low	Low sensitivity

## MAP OF RELATIVE CIVIL AVIATION THEME SENSITIVITY

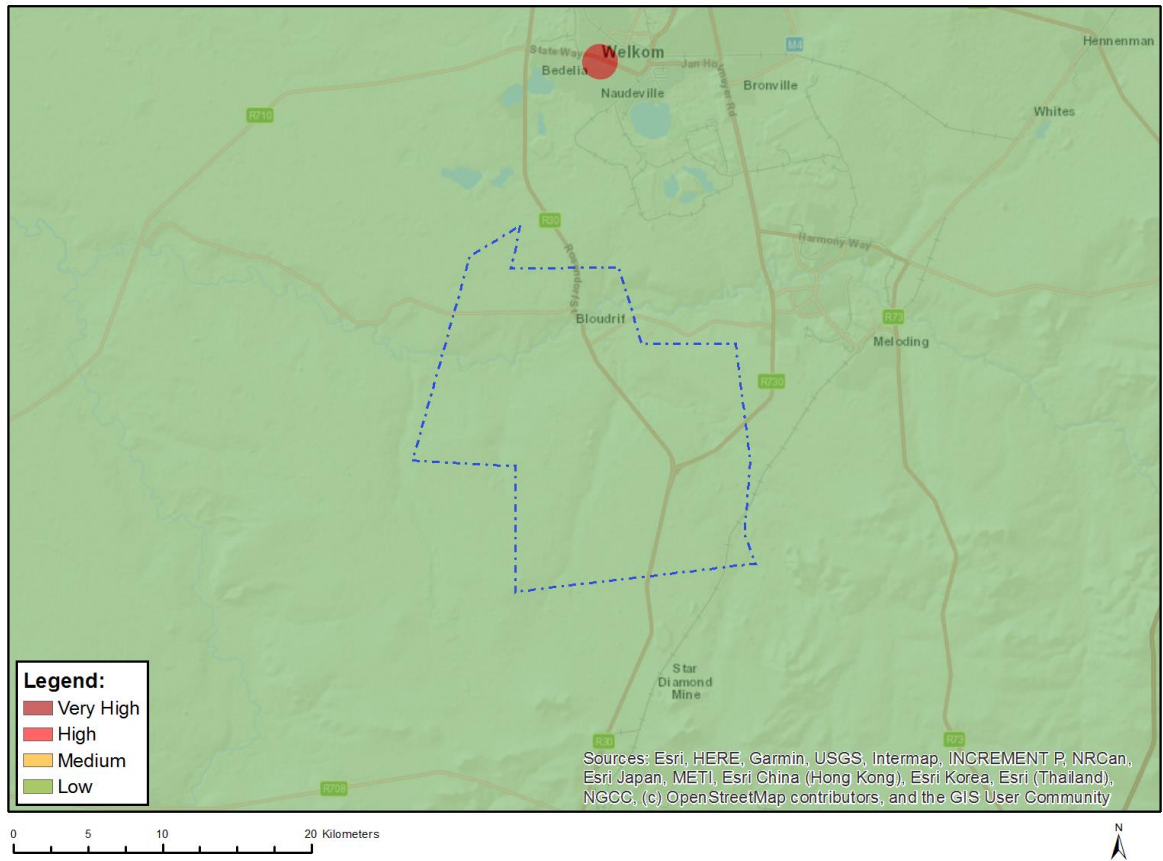


Very High sensitivity	High sensitivity	Medium sensitivity	Low sensitivity
	X		

### Sensitivity Features:

Sensitivity	Feature(s)
High	Within 8 km of other civil aviation aerodrome
Low	Low sensitivity
Medium	Between 8 and 15 km of other civil aviation aerodrome

# MAP OF RELATIVE DEFENCE THEME SENSITIVITY

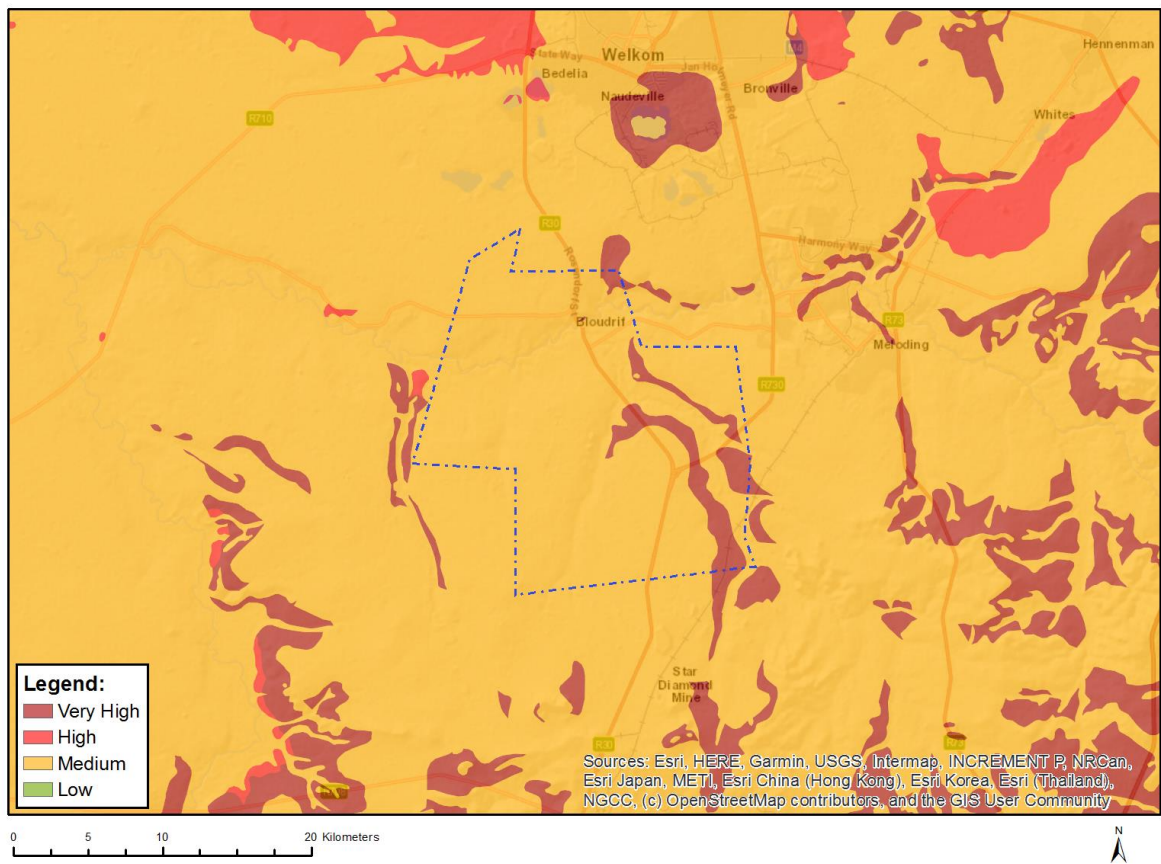


Very High sensitivity	High sensitivity	Medium sensitivity	Low sensitivity
			X

## Sensitivity Features:

Sensitivity	Feature(s)
Low	Low Sensitivity

## MAP OF RELATIVE PALEONTOLOGY THEME SENSITIVITY

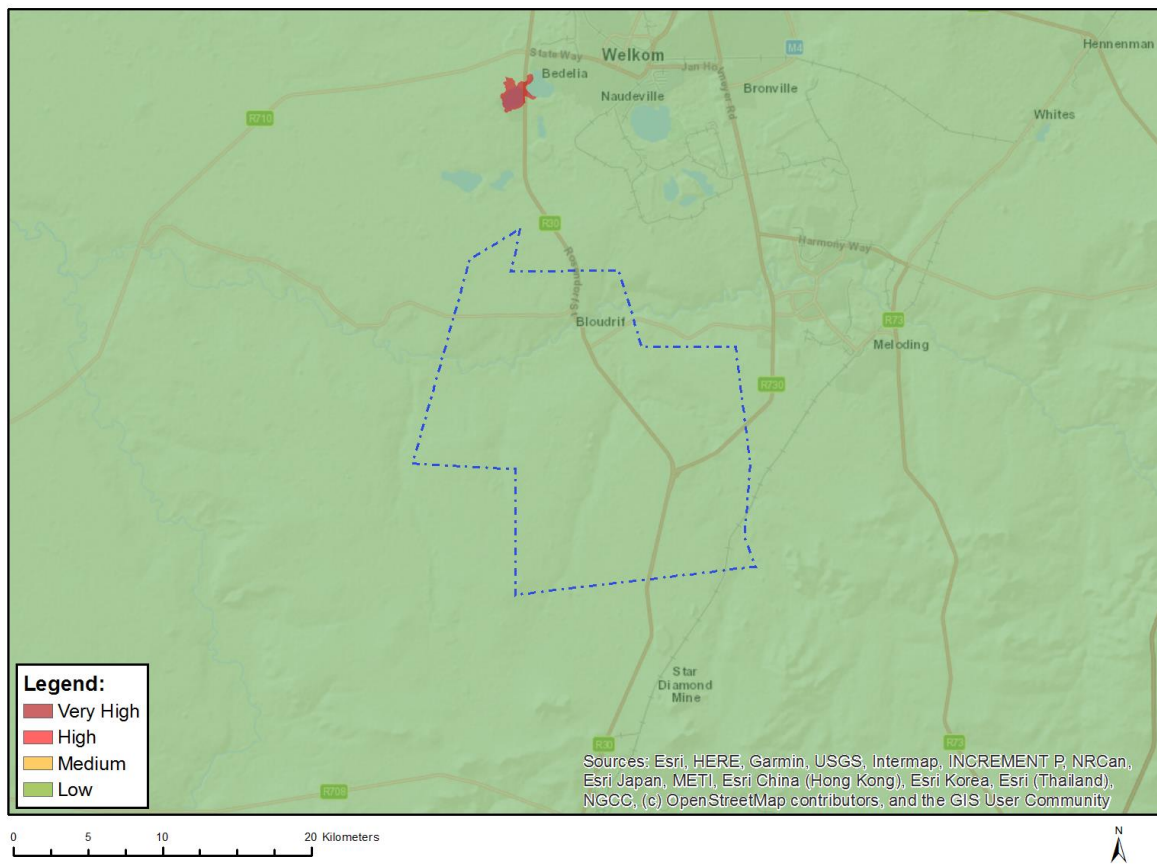


Very High sensitivity	High sensitivity	Medium sensitivity	Low sensitivity
X			

### Sensitivity Features:

Sensitivity	Feature(s)
Medium	Features with a Medium paleontological sensitivity
Very High	Features with a Very High paleontological sensitivity

## MAP OF RELATIVE PLANT SPECIES THEME SENSITIVITY



Where only a sensitive plant unique number or sensitive animal unique number is provided in the screening report and an assessment is required, the environmental assessment practitioner (EAP) or specialist is required to email SANBI at [eiadatarequests@sanbi.org.za](mailto:eiadatarequests@sanbi.org.za) listing all sensitive species with their unique identifiers for which information is required. The name has been withheld as the species may be prone to illegal harvesting and must be protected. SANBI will release the actual species name after the details of the EAP or specialist have been documented.

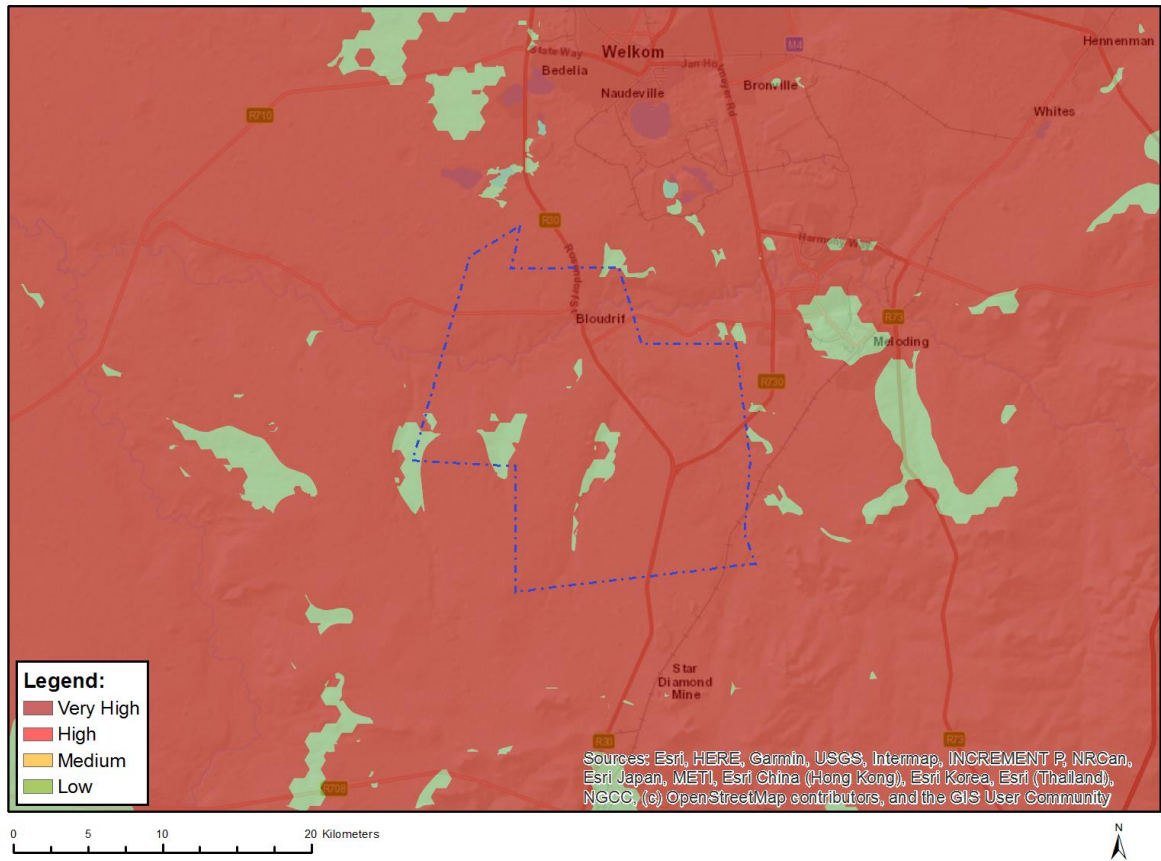
Very High sensitivity	High sensitivity	Medium sensitivity	Low sensitivity
			X

### Sensitivity Features:

Sensitivity	Feature(s)
Low	Low Sensitivity



## MAP OF RELATIVE TERRESTRIAL BIODIVERSITY THEME SENSITIVITY



Very High sensitivity	High sensitivity	Medium sensitivity	Low sensitivity
X			

### Sensitivity Features:

Sensitivity	Feature(s)
Low	Low Sensitivity
Very High	Critical biodiversity area 1
Very High	Critical biodiversity area 2
Very High	Ecological support area 1
Very High	Ecological support area 2
Very High	Endangered ecosystem
Very High	Protected Areas Expansion Strategy