

03 April 2023

Dear Sir/Madam,

BASIC ASSESSMENT PROCESS FOR A PROPOSED 3D SEISMIC SURVEY OFF THE SOUTHEAST COAST, SOUTH AFRICA

INVITATION TO PUBLIC INFORMATION-SHARING MEETINGS AND NOTIFICATION OF AVAILABILITY OF DRAFT BASIC ASSESSMENT REPORT FOR REVIEW AND COMMENT

CGG Services SAS (CGG) has applied to the Department of Mineral Resources and Energy (DMRE) for Environmental Authorisation (EA) to undertake a speculative 3D seismic survey in the Algoa/Outeniqua Basin off the Southeast Coast of South Africa. The proposed 3D survey would cover an area of up to 9 000 km² in a 12 750 km² area of interest located offshore of the Eastern Cape province, roughly between Gqeberha in the east and a point approximately 120 km southeast of Plettenberg Bay in the west. The area of interest is located in water depths of 200 m to beyond 4 000 m and ranges between 45 km and 120 km from the coast at its closest point (see Figure 1).

The Application for EA has been made in terms of the Environmental Impact Assessment (EIA) Regulations, 2014 (as amended), promulgated under the National Environmental Management Act, 1998 (No. 107 of 1998; NEMA).

SLR Consulting (South Africa) (Pty) Ltd (SLR) has been appointed by CGG to undertake the required Basic Assessment process in terms of the EIA Regulations, 2014 and the related public participation process. This process aims to identify and assess the potential environmental and social impacts and define mitigation measures, where possible, to avoid and reduce significant negative environmental and social impacts, and provide adequate information to the competent authority to make an informed decision.

INVITATION TO PARTICIPATE AND ATTEND PUBLIC INFORMATION-SHARING MEETINGS

We cordially invite all stakeholders to attend the **public information-sharing meetings** listed in the below table. The objectives of the meetings are to provide an overview of the project proposal and findings of the Basic Assessment process, as well as provide stakeholders an opportunity to comment.

No.	Location	Venue/Platform	Date (2023)	Time
1	Plettenberg Bay	Piesang Valley Community Hall 7 Greenpoint Avenue	Thursday 13 April	17h00
2	Storms River Village	Tsitsikamma Village Inn Darnell Street	Friday 14 April	16h00



SLR Consulting (South Africa) Proprietary Limited

Registered Address: Suite 1 - Building D, Monte Circle,
178 Montecasino Boulevard, Fourways, Johannesburg, Gauteng, 2191
Postal Address: PO Box 1596, Cramerville, 2060, South Africa

Reg. No: 2007/005517/07

Vat No: 4630242198

Johannesburg Office: Physical Address: Suite 1 - Building D, Monte Circle,
178 Montecasino Boulevard, Fourways, Johannesburg, Gauteng, 2191
Postal Address: PO Box 1596, Cramerville, 2060 Tel: +27 11 467 0945

Cape Town Office: Physical / Postal Address: 5th Floor, Letterstedt House,
Newlands on Main, Cnr Main and Campground Roads,
Newlands, Cape Town, Western Cape, 7700
Tel: +27 21 461 1118

No.	Location	Venue/Platform	Date (2023)	Time
3	St Francis Bay	Sea Vista Community Hall Geelbek Street	Monday 17 April	18h00
4	Jeffreys Bay	Pellsrus Hall 1 Harder Street	Tuesday 18 April	18h00
5	Gqeberha	ETC Conference Centre Spondo Street, Struandale	Thursday 20 April 2023	17h00
6	Online Meeting	Microsoft TEAMS	Monday 24 April 2023	15h00
<p>REGISTRATION FOR PUBLIC MEETINGS</p> <p>Please click here (https://forms.microsoft.com/e/QvAauMsU5b) or scan the QR Code to complete the required form to register as an Interested and/or Affected Party (I&AP) or to attend these public meetings.</p> <p>For the online meeting, please note that only people who register will receive a link to the meeting. Please register for the online meeting by no later than Friday 21 April 2023 in order to be sent the meeting link.</p>				
<p>NOTE:</p> <ul style="list-style-type: none"> To join the online meeting, you do not need to have a Microsoft TEAMS account. You will, however, need an active internet connection or mobile data to participate. If you want to join the meeting from a mobile device, you will need to download the Microsoft TEAMS mobile app. For more information on how to join a TEAMS meeting from your desktop (using either the Microsoft Edge or Google Chrome browser) or mobile device please click here. The meetings will be recorded and uploaded to the SLR's website and a data free website (details provided below). 				

AVAILABILITY OF DRAFT BASIC ASSESSMENT REPORT FOR REVIEW AND COMMENT

Notice is hereby given in terms of NEMA and the EIA Regulations 2014 (as amended) that a draft Basic Assessment Report (BAR) for the proposed project will be made available for a 30-day review and comment period from **11 April to 15 May 2023** (including intervening public holidays). This provides an opportunity for Interested and Affected Parties (I&APs) to comment on any aspect of the proposed project and the impact assessment findings.

The full report as well as a Non-Technical Summary will be available for download from the SLR website **from 11 April 2023** (<https://www.slrconsulting.com/en/public-documents/cgg-algoa>) as well as from a data free website (<https://slrpublicdocs.datafree.co/en/public-documents/cgg-algoa>).

The Non-Technical Summary will also be available on the above-mentioned websites as an **audio recording**. Both the Non-Technical Summary document and audio recording are available in English, Afrikaans and isiXhosa languages. The Non-Technical Summary can also be sent to I&APS via WhatsApp on request.

Hard copies of the full report will also be made available at the below public libraries.

Location	Name of facility	Physical address
Gqeberha	Walmer Library	Main Road, Walmer
Jeffreys Bay	Jeffreys Bay Library	53 Diaz Road, Jeffreys Bay
St Francis Bay	St Francis Community Library	3 Assissi Drive, St Francis Bay
Plettenberg Bay	Plettenberg Bay Library	Mellville Corner, Marine Drive

DEADLINE FOR COMMENT ON THE DRAFT BAR

Comments on the draft BAR should reach SLR by **no later than 15 May 2023** using the contact details below.

SLR Consulting (South Africa) (Pty) Ltd

Postal Address: 5th Floor, Letterstedt House, Newlands on Main, Newlands, 7700

Tel: (021) 461 1118 **WhatsApp / SMS:** 063 900 5536

E-mail: cggsouthcoast@slrconsulting.com

SLR Website: <https://www.slrconsulting.com/en/public-documents/cgg-algoa>

Data Free Website: <https://slrpublicdocs.datafree.co/en/public-documents/cgg-algoa>

All comments received will be incorporated and responded to in a Comments and Responses Report, which will be appended to the final BAR. The final BAR will be made available on the SLR website for information purposes.

Should you have any queries in this regard please do not hesitate to contact the undersigned Stakeholder Engagement Team.

Your sincerely,

CGG Algoa Stakeholder Engagement Team

SLR's commitment regarding the protection of personal information:

By providing your personal information as part of a comment, you will be included in the Project stakeholder database, and you consent to SLR managing your information in accordance with the Protection of Personal Information Act, 2013. By being registered on the Project database, you authorise SLR to (1) retain and use your Personal Information as part of a contact database for this and/or other EIAs, (2) contact you regarding this and/or other EIA processes, (3) disclose the database to other authorised parties for lawful purposes, (4) process it for lawful purposes, and (5) include correspondence received in EIA Reports.

SLR will not process your Personal Information, other than as permitted or required by EIA processes or as required by Law or public policy. SLR will use reasonable, appropriate security safeguards in order to protect Personal Information, and to reasonably prevent any damage to, loss of, or unauthorised access or disclosure of Personal Information, other than as required for EIA processes or as required by any Law or public policy.

You may request for your Personal Information to be deleted from the Project stakeholder database or comments to be excluded from EIA Reports at any time by contacting SLR.

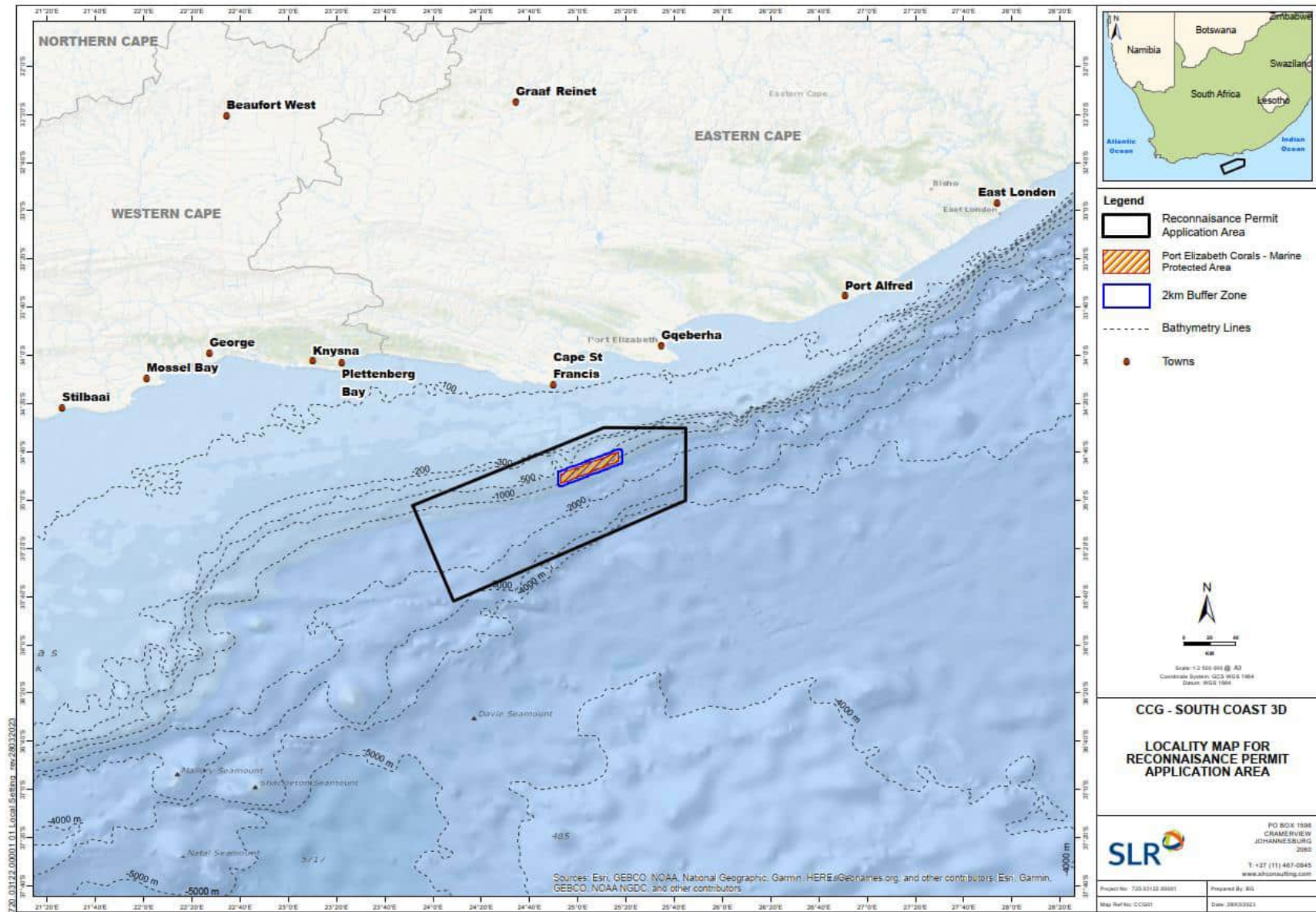


Figure 1: Location of the Reconnaissance Permit area/survey area of interest off the Southeast Coast

03 April 2023

Geagte Heer/Dame,

**BASIESE EVALUERINGSPROSES VIR 'N VOORGESTELDE 3D SEISMIESE OPNAME
LANGS DIE SUIDOOSKUS, SUID-AFRIKA**

**UITNODIGING NA PUBLIEKE INLIGTINGSVERGADERINGS EN KENNISGEWING VAN
BESKIKBAARHEID VAN KONSEP BASIESE EVALUERINGSVERSLAG VIR OORSIG EN KOMMENTAAR**

CGG Services SAS (CGG) het by die Departement van Mineraal Hulpbronne en Energie (DMRE) aansoek gedoen om Omgewingsmagtiging om 'n spekulatiewe 3D seismiese opname in die Algoa/Outeniqua Kom langs die Suidooskus van Suid-Afrika te onderneem. Die voorgestelde 3D seismiese opname sal 'n area van tot 9 000 km² in 'n 12 750 km² area van belang dek wat afluandig van die Oos-Kaap Provinsie geleë is, rofweg tussen Gqeberha in die ooste en 'n punt ongeveer 120 km suidoos van Plettenbergbaai in die weste. Die area van belang is geleë in waterdieptes van 200 m tot dieper as 4 000 m en tussen 45 km en 120 km vanaf die kus by die naaste punt (sien Figuur 1).

Die Aansoek om Omgewingsmagtiging is ingedien in terme van die Omgewingsimpakbepaling (OIB) Regulasies, 2014 (soos gewysig) onder die Nasionale Wet op Omgewingsbestuur, 1998 (No. 107 van 1998; NEMA).

SLR Consulting (South Africa) (Pty) Ltd (SLR) is deur CGG aangestel om die vereiste Basiese Evalueringproses en gepaardgaande publieke deelnameproses in terme van die OIB Regulasies 2014 te onderneem. Die doel van hierdie proses is om die potensiële omgewings- en sosiale impakte te identifiseer en om versagtingsmaatreëls te ontwikkel om, waar moontlik, beduidende negatiewe impakte te vermy, te verminder of te bestuur. Die proses poog ook om voldoende inligting aan die bevoegde gesag beskikbaar te stel sodat 'n ingeligte besluit op die aansoek geneem kan word.

UITNODIGING OM DEEL TE NEEM EN PUBLIEKE INLIGTINGSVERGADERINGS BY TE WOON

U word vriendelik uitgenooi om die **publieke inligtingsvergaderings**, soos hieronder gelys, by te woon. Die doel van die vergaderings is om 'n oorsig te bied van die voorgestelde projek en bevindinge van die impakstudieproses, sowel as om aan belanghebbendes 'n geleentheid te bied om kommentaar te lewer.

No.	Plek	Lokaal /Platform	Datum (2023)	Tyd
1	Plettenbergbaai	Piesangvallei Gemeenskapsaal, 7 Greenpoint Laan	Donderdag 13 April	17h00
2	Stormsrivier	Tsitsikamma Village Inn, Darnellstraat	Vrydag 14 April	16h00



SLR Consulting (South Africa) Proprietary Limited


Registered Address: Suite 1 - Building D, Monte Circle,
178 Montecasino Boulevard, Fourways, Johannesburg, Gauteng, 2191
Postal Address: PO Box 1596, Cramerview, 2060, South Africa

Reg. No: 2007/005517/07

Vat No: 4630242198

Johannesburg Office: Physical Address: Suite 1 - Building D, Monte Circle,
178 Montecasino Boulevard, Fourways, Johannesburg, Gauteng, 2191
Postal Address: PO Box 1596, Cramerview, 2060 Tel: +27 11 467 0945

Cape Town Office: Physical / Postal Address: 5th Floor, Letterstedt House,
Newlands on Main, Cnr Main and Campground Roads,
Newlands, Cape Town, Western Cape, 7700
Tel: +27 21 461 1118

No.	Plek	Lokaal /Platform	Datum (2023)	Tyd
3	St Francisbaai	Sea Vista Gemeenskapsaal Geelbekstraat	Maandag 17 April	18h00
4	Jeffriesbaai	Pellsrus Saal Harderstraat 1	Dinsdag 18 April	18h00
5	Gqeberha	ETC Conference Centre Spondostraat, Struandale	Donderdag 20 April	17h00
6	Aanlyn Vergadering	Microsoft TEAMS	Maandag 24 April	15h00
<p>REGISTRASIE VIR PUBLIEKE VERGADERINGS</p> <p>Klik hier (https://forms.microsoft.com/e/QvAauMsU5b) of skandeer die QR Kode om die regisrasievorm in te vul om as belanghebbende party te registreer of om die publieke vergaderings by te woon.</p> <p>Vir die aanlyn vergadering sal slegs partye wat vir die vergadering geregistreer het 'n skakel na die vergadering ontvang. Registreer asseblief teen 21 April 2023 vir die aanlyn sessie.</p>				
<p>LET WEL:</p> <ul style="list-style-type: none"> Om die aanlyn vergadering by te woon sal u nie 'n Microsoft TEAMS rekening/profiel nodig nie. U sal egter 'n aktiewe internetkonneksie of mobiele data nodig om deel te neem. Indien u die vergadering vanaf 'n selfoon of tablet wil bywoon sal u die Microsoft TEAMS mobiele toepassing ("app") moet aflaai. Vir meer inligting oor hoe om by 'n TEAMS vergadering in te skakel vanaf u rekenaar (deur Microsoft Edge of Google Chrome) of foon/tablet, klik hier. Die vergadering sal opgeneem en op die SLR webblad gelaai word (besonderhede hieronder). 				

BESKIKBAARHED VAN KONSEP BASIESE EVALUERINGSVERSLAG VIR OORSIG EN KOMMENTAAR

Kennis geskied hiermee in terme van NEMA en die OIB Regulasies 2014 (soos gewysig) dat 'n konsep Basiese Evalueringsverslag (BEV) vir die voorgestelde projek beskikbaar sal wees vir 'n 30-dae oorsig- en kommentaarperiode vanaf **11 April tot 15 Mei 2023** (met voorsiening vir openbare vakansiedae). Dit verskaf 'n geleentheid aan belanghebbende partye om kommentaar te lewer op enige aspek van die voorgestelde projek en die bevindinge van die Basiese Evaluering.

Die volle verslag sowel as 'n Nie-Tegniese Opsomming kan **vanaf 11 April 2023** by die SLR webblad afgelaai word (<https://www.slrconsulting.com/en/public-documents/cgg-algoa>) sowel as vanaf 'n verniet-data skakel (<https://slrpublicdocs.datafree.co/en/public-documents/cgg-algoa>).

Die Nie-Tegniese Opsomming sal ook by die bostaande skakels beskikbaar wees as 'n **klankopname**. Beide die Nie-Tegniese Opsomming dokument en klankopname is beskikbaar in Engels, Afrikaans en isiXhosa. Die Nie-Tegniese Opsomming kan ook op versoek via Whatsapp aan belanghebbende partye gestuur word.

Harde kopieë van die volle verslag sal ook by die volgende biblioteke beskikbaar wees.

Plek	Naam van Biblioteek	Straatadres
Gqeberha	Walmer Biblioteek	Hoofstraat, Walmer
Jeffriesbaai	Jeffriesbaai Biblioteek	Diazstraat 53, Jeffriesbaai

Plek	Naam van Biblioteek	Straatadres
St Francisbaai	St Francis Community Library	Assisi Straat 3, St Francisbaai
Plettenbergbaai	Plettenbergbaai Biblioteek	Mellville Corner, Marine Weg

SPERDATUM VIR KOMMENTAAR OP DIE KONSEP BEV

Kommentaar op die konsep BEV moet SLR **teen 15 Mei 2023** bereik by die onderstaande besonderhede.

SLR Consulting (South Africa) (Pty) Ltd

Posadres: 5de Vloer, Letterstedt House, Newlands on Main, Nuweland, 7700

Tel: (021) 461 1118 **WhatsApp / SMS:** 063 900 5536

E-pos: cggsouthcoast@slrconsulting.com

SLR Webblad: <https://www.slrconsulting.com/en/public-documents/cgg-algoa>

Verniet Data Webskakel: <https://slrpublicdocs.datafree.co/en/public-documents/cgg-algoa>

Alle kommentaar wat ontvang word sal saamgevat en op gereageer word in 'n Kommentaarverslag wat by die finale BEV ingesluit sal word. Die finale BEV sal ter inligting op die SLR webblad gelaai word.

Indien u enige vrae aangaande bostaande het, skakel asseblief met die ondergetekende Publieke Deelnamespan.

Vriendelike Groete,

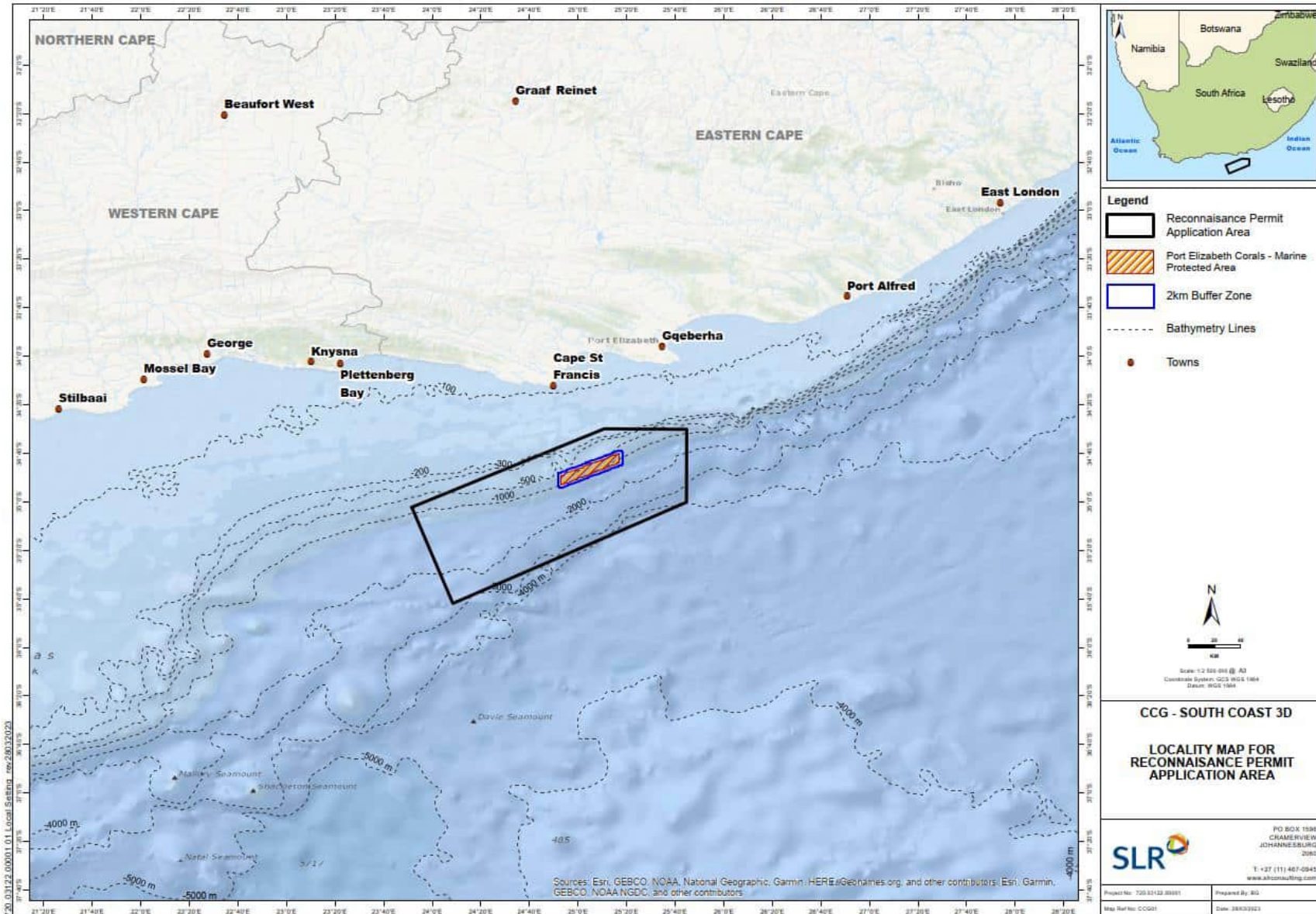
CGG Algoa Publieke Deelnamespan

SLR se verbintenis rakende die beskerming van persoonlike inligting:

Deur u persoonlike inligting as deel van kommentaar te verskaf, sal u by die projekdatabasis vir belanghebbendes ingesluit word, en u stem toe dat SLR u inligting ingevolge die Wet op Beskerming van Persoonlike Inligting, 2013 bestuur. Met u registrasie op die projekdatabasis magtig u SLR om (1) u persoonlike inligting as deel van 'n kontakdatabasis vir hierdie en/of ander OIB's te behou en te gebruik, (2) u oor hierdie en/of ander OIB-prosesse te kontak, (3) die databasis aan ander gemagtigde partye vir wettige doeleindes bekend te maak, (4) dit vir wettige doeleindes te prosesseer, en (5) korrespondensie wat ontvang is, by OIB-verslae in te sluit.

SLR sal nie u persoonlike inligting prosesseer nie, behalwe soos toegelaat of vereis deur OIB-prosesse of soos deur die wet of openbare beleid bepaal. SLR sal redelike, toepaslike sekuriteitsmaatreëls toepas om persoonlike inligting te beskerm, en om redelikerwys enige skade aan, verlies van of ongemagtigde toegang tot of bekendmaking van persoonlike inligting te voorkom, behalwe soos vereis vir OIB-prosesse of soos deur enige wet of openbare beleid bepaal.

U mag enige tyd met SLR in verbinding te tree en versoek dat u persoonlike inligting uit die projekdatabasis vir belanghebbendes geskrap word of dat kommentaar nie by OIB-verslae ingesluit word nie.



Figuur 1: Ligging van die Verkenningpermit Area/area van belang vir seismiese opname, langs die Suidooskus

Mnumzana/Nkosazana obekekileyo,

**INKQUBO YOVAVANYO OLUSISISEKO SOHLOLO OLUYI 3D LWEMO YENTSHUKUMO PHANTSI
KOMHLABA CEBU KUHLE NONXWEME LOMZANTSI- MPUMA, EMZANTSI AFRIKA**

**ISIMEMO KWIINTLANGANISO ZIKAWONKE-WONKE ZOKWABELANA NGENKCUKACHA KWAKUNYE
NESAZISO NGOKUFUMANEKA KWENGXELO YOVAVANYO LWESISISEKO EYAYIYLWAYO UKUZE
SIPHONONWE KWAKUNYE NEZIMVO.**

I-CGG ifake isicelo kwiSebe lezambiwo nezamandla (Department of Moneral Resources and Energy (DMRE)) sokwenza uphando oluyi 3D lwemo yentshukumo phantsi komhlaba kwi Algoa/Outeniqua Basin cebu kuhle nonxweme loMzantsi-mpuma eMzantsi Afrika. Olu hlolo luphakanyiswayo oluyi 3D lwemo yentshukumo phantsi komhlaba luya kugubungela ummandla oya kuthi ga kuma 9 000 km² kummandla osemndleni oli 12 750 km² ocebu nonxweme lwephondo laseMpuma Koloni, phakathi kwe Gqeberha kwimpuma nendawo emalunga ne 120 km kumzantsi mpuma ne Plettenberg Bay entshona. Ummandla osemndleni ukwiinzulu zamanzi ezingama 200 m ukuya ngapha kwama 4 000 m yaye uphakathi kwama 45 km ne 120 km ukusuka kunxweme olulolona lukufutshane kuyo (bona umfanekiso 1).

Isicelo sokwenza lentlobo yophando sifakwe ngokuhambisana nemiqathango ye EIA yango 2014 (neenguqu zayo), ebhengezwe ngokomthetho woLawulo lukaZwelonke lokusiNgqongileyo, ka-1998 (No. 107 we 1998) (NEMA).

I-SLR Consulting (South Africa) (Pty) Ltd (SLR) iqeshwe yi CGG ukuba yenze inkqubo yoVavanyo olusisiseko ngokuhambisana nemiQathango ye EIA, yango 2014 kunye nenkqubo ehambelana nayo yokuthatha inxaxheba kwabantu ngokubanzi esidlangalaleni. Le nkqubo inenjongo yokuchonga ize ivavanye impembelelo esenokubakho kokusingqongileyo nasentlalweni, ize ichaze amanyathelo okunciphisa oku, apho kunokwenzeka, ukuze kuphetshwe yaye kuncitshiswe impembelelo enokuthi ibembi kokusingqongileyo nasentlalweni, ize idlulisele inkcazelo efanelekileyo kwigunya elinobuchule ukuze lenze isigqibo esisekelwe kolu lwazi.

**ISIMEMO SOKUTHATHA INXAXHEBA NOKUZIMASA IINTLANGANISO ZOKWABELANA NGENGCACISO
YOLUNTU**

Ngoko simema wonke umntu **ochaphazelekayo kwiintlanganiso kawonke-wonke zokwabelana** njengoko kubhaliwe ngezantsi. Iinjongo zeentlanganiso kukunika amagqabantshintshi ngesindululo seprojekthi kunye



SLR Consulting (South Africa) Proprietary Limited

Registered Address: Suite 1 - Building D, Monte Circle,
178 Montecasino Boulevard, Fourways, Johannesburg, Gauteng, 2191
Postal Address: PO Box 1596, Cramerville, 2060, South Africa

Reg. No: 2007/005517/07

Vat No: 4630242198

Johannesburg Office: Physical Address: Suite 1 - Building D, Monte Circle,
178 Montecasino Boulevard, Fourways, Johannesburg, Gauteng, 2191
Postal Address: PO Box 1596, Cramerville, 2060 Tel: +27 11 467 0945

Cape Town Office: Physical / Postal Address: 5th Floor, Letterstedt House,
Newlands on Main, Cnr Main and Campground Roads,
Newlands, Cape Town, Western Cape, 7700
Tel: +27 21 461 1118

neziphumo zenkqubo yoVavanyo oluSisiseko, kunye nokubonelela abachaphazelekayo ithuba lokuvakalisa izimvo zabo.

No.	Indawo	Isakhiwo/iPlatifomu	Umhla (2023)	Ixesha
1	Plettenberg Bay	Piesang Valley Community Hall 7 Greenpoint Avenue	ULwesine 13 UTshazimpunzi 2023	17h00
2	Storms River Village	Tsitsikamma Village Inn Darnell Street	ULwesihlanu 14 UTshazimpunzi 2023	16h00
3	St Francis Bay	Sea Vista Community Hall Geelbek Street	UMvulo 17 UTshazimpunzi 2023	18h00
4	Jeffreys Bay	Pellsrus Hall 1 Harder Street	ULwesibini 18 UTshazimpunzi 2023	18h00
5	Gqeberha	ETC Conference Centre Spondo Street, Struandale	ULwesine 20 UTshazimpunzi 2023	17h00
6	Online Meeting	Microsoft TEAMS	Umvulo 24 UTshazimpunzi 2023	15h00
<p>IINTLANGANISO ZIKAWONKE WONKE</p> <p>Nceda uzalise ifomu yokubhalisa ngokuthi uskene iKhodi ye QR ngezantsi (okanye apha https://forms.microsoft.com/e/QvAauMsU5b).</p> <p>Ukuze uthabathe inxaxhema kwintlanganiso esemoyeni/kwi-intanethi, nceda uqaphele okokuba ngabantu abathe babhalisa bodwa abayakufumana iinkcukacha malunga nalentlobo yentlangano. Nceda ubhalise ngaphambili komhla we 21 kuTshazimpunzi (April) oyakube ungolwesihlanu ukuze ufumane iinkcukacha kwangethuba.</p>				
<p>PHAWULA:</p> <ul style="list-style-type: none"> Ukuze ungene kwintlanganiso ekwi-intanethi, akufuneki ube neakhawunti ye-Microsoft TEAMS. Noko ke, kuza kufuneka ube nonxibelelwano lwe-intanethi olusebenzayo okanye i-data ukuze ukwazi ukuba nenxaxheba. Ukuba ufuna ukungena kwintlanganiso usebenzisa isixhobo esiphathwayo, kuza kufuneka udowunlode i-Microsoft TEAMS mobile app. Ukuze ufumane inkcazelo engakumbi ngendlela yokujoyina intlanganiso ye-TEAMS ngekhomputha yakho (usebenzisa i-Microsoft Edge okanye Google Chrome browser) okanye isixhobo esiphathwayo nceda ucofe apha. Iintlanganiso ziya kurekhodwa zize zifakwe kwiwebhusayithi ye-SLR nakwiwebhusayithi engafuni i-data (iinkcukacha zibonelelwe ngezantsi). 				

UKUFUMANEKA KWENGXELO YOVAVANYO YOKUHLOLWA KWAKUNYE NEZIMVO

Esi-saziso sinikezwa malunga nemiqathango nemimiselo ye-NEMA kunye ne-EIA 2014 (neenguqu zayo). Uyilo loVavanyo Olusisiseko (i-BAR) yale projekthi iphakanyiswayo iya kwenziwa ifumaneke kwisithuba seentsuku ezingama 30 zentlola nokunikwa kwezimvo ukususela ngowe **11 UTshazimpunzi ukuya kowe 15 EyeCanzibe 2023**. Oku kunika ithuba kumaqela anomdla nachaphazelekayo (I&AAs) ukuba ahlomle ngawo nawuphi na umba weprojekthi ecetywayo kunye neziphumo zovavanyo lwempembelelo.

Ingxelo epheleleyo iya kufumaneka ukuba uyothule kwi webhusayithi ye SLR ukususela ngowe **11 UTshazimpunzi 2023** (<http://www.slrconsulting.com/en/public-documents/cgg-algoa>) nakwi webhusayithi engasebenzisi idata yakho (<https://slrpublicdocs.datafree.co/en/public-documents/cgg-algoa>).

Isishwankathelo esingesosobugcisa siya kufumaneka kwakhona kwezi webhusayithi zikhankanywe ngasentla njengoshicilelo oluvakalayo. Omabini lamaxwebhu esishwankathelo esingesobugcisa kunye noshicilelo oluvakalayo luyafumaneka ngesiNgesi, isiBhulu, kunye nesiXhosa.

likopi zengxelo ezibambeka ngesandla ziya kwenziwa zifumaneke kulamathala eencwadi angezantsi:

Indawo	Isakhiwo	Idilesi
Gqeberha	Walmer Library	Main Road, Walmer
Jeffreys Bay	Jeffreys Bay Library	53 Diaz Road, Jeffreys Bay
St Francis Bay	St Francis Community Library	3 Assissi Drive, St Francis Bay
Plettenberg Bay	Plettenberg Bay Library	Mellville Corner, Marine Drive

UMHLA WOKUGQIBELA WOKUNIKEZA IZIMVO KUYILO LWE-BAR

Izimvo malunga noyilo lwe-BAR kufuneka zifike kwi-SLR ungadlulanga owe-15 EyeCanzibe 2023 kusetyenziswa iinkcukacha zoqhagamshelwano ezingezantsi.

SLR Consulting (South Africa) (Pty) Ltd

Iadresi YePosi: 5th Floor, Letterstedt House, Newlands on Main, Newlands, 7700

Ifowuni: (021) 461 1118 **WhatsApp / SMS:** 063 900 5536

I-Imeyili: cggsouthcoast@slrconsulting.com

IWebhusayithi Ye-SLR: <https://www.slrconsulting.com/en/public-documents/cgg-algoa>

IWebhusayithi Engafuni I-Data: <https://slrpublicdocs.datafree.co/en/public-documents/cgg-algoa>

Zonke izimvo ezifunyenweyo ziya kudityaniswa kwaye ziphendulwe kwiNgxelo yamagqabaza kunye neeMpendulo, eya kuthi yongezelelwe kwiBAR yokugqibela. I-BAR yokugqibela iya kwenziwa ifumaneke kwiwebhusayithi ye-SLR.

Ukuba unayo nayiphi na imibuzo ngokuphathele oku nceda ungathingazi ukuqhagamshelana neQela Labo Babandakanyekileyo abasayine ngezantsi.

Ozithobileyo,

I-CGG Algoa Iqela Labo Babandakanyekileyo

Ukuzibophelela kwe-SLR malunga nokhuselo lenkcazelo yomntu buqu:

Ngokudlulisela inkcazelo yakho yobuqu njengenxalenye yezimvo, uza kuqukwa kuvimba wenkcazelo wabo babandakanyekayo kule Projekthi, yaye uyavuma ukuba i-SLR isebenzise inkcazelo yakho ngokuvisisana noMthetho Wokhuselo Lwenkcazelo Yobuqu, wango-2013. Ngokubhaliswa kuvimba wolwazi weProjekthi, ugonyazisa i-SLR ukuba (1) igcine ize isebenzise iNkcazelo yakho Yobuqu njengenxalenye yovimba wolwazi loqhagamshelwano lwale kunye/okanye lwezinye ii-ESIA, (2) iqhagamshelane nawe malunga noku kunye/okanye ezinye iinkqubo ze-EIA, (3) ixele inkcazelo yakho kumanye amaqela agonyazisiweyo ngenjongo ezisemthethweni, (4) iyiphicothe ngenjongo ezisemthethweni, (5) nokuba iyuquke kwimbalelwano ezifumaneka kwiiNgxelo ze-EIA.

I-SLR ayisayi kusebenzisa iNkcazelo yakho Buqu, ngaphandle kwangendlela evunyelweyo okanye efunekayo kwiinkqubo ze-EIA okanye njengoko kufuneka ngokoMthetho okanye yinkqubo karhulumente. I-SLR iya kusebenzisa amanyathelo okhuseleko asengqiqweni, nafanelekileyo ukuze ikhusele iNkcazelo yakho Buqu, nokuthintela ngokusengqiqweni nawuphi umonakalo, ilahleko, okanye ufikelelo olungagonyaziswanga okanye ukuxelwa kweNkcazelo yakho Buqu, ngaphandle kwangendlela olufunwa ngayo yinkqubo ye-EIA okanye njengoko kufuneka kuwo nawuphi uMthetho okanye kwinkqubo karhulumente.

Ungacela ukuba iNkcazelo yakho Buqu icinywe kuvimba wolwazi weProjekthi yabo babandakanyekileyo okanye izimvo zingafakwa kwiiNgxelo ze-EIA nanini na ngokuqhagamshelana ne-SLR.

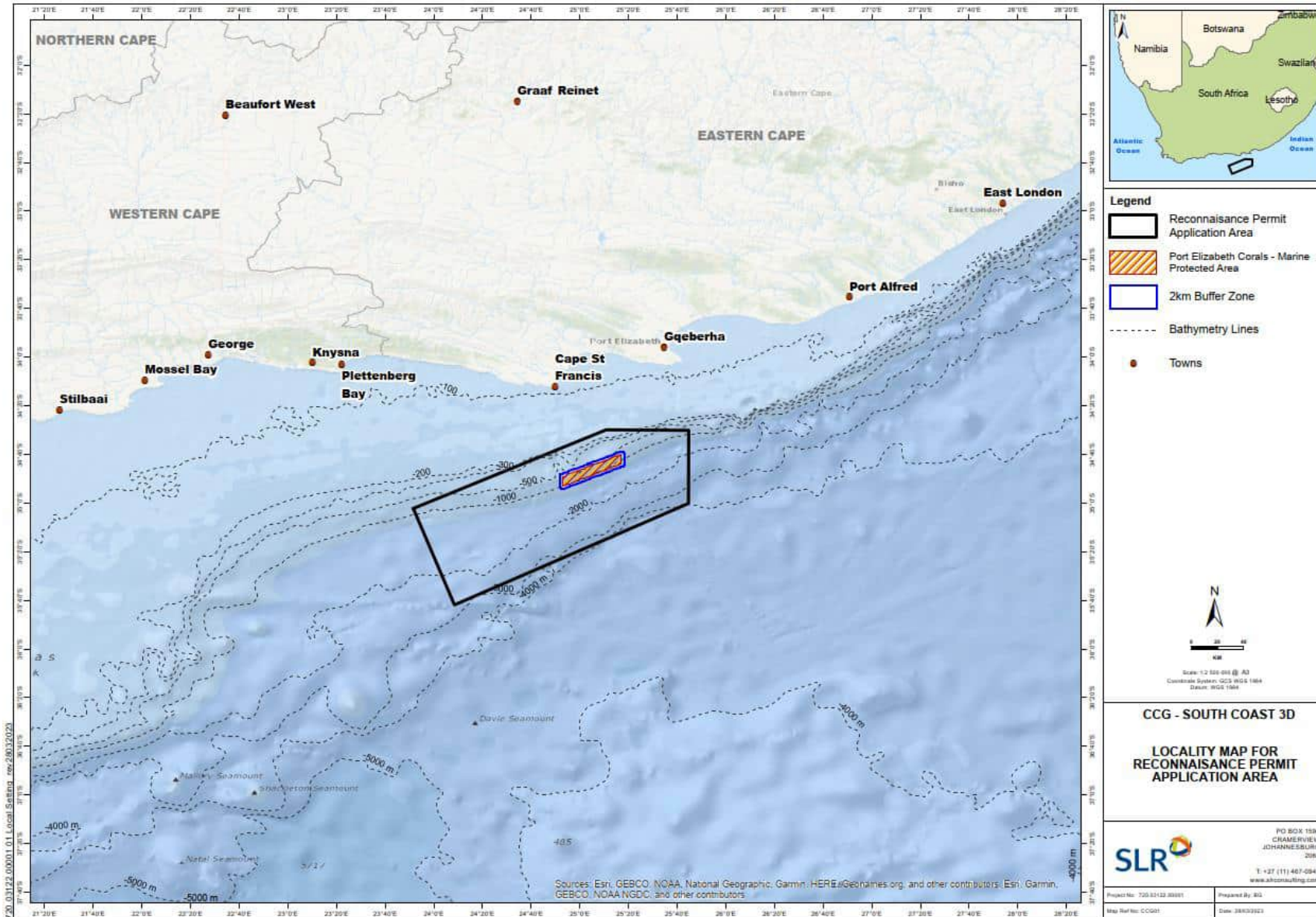


Figure 1: Location of the Reconnaissance Permit area/survey area of interest off the Southeast Coast