

**SCREENING REPORT FOR AN ENVIRONMENTAL AUTHORIZATION AS
REQUIRED BY THE 2014 EIA REGULATIONS – PROPOSED SITE
ENVIRONMENTAL SENSITIVITY**

EIA Reference number: n/a

Project name: Leeudoringstad Powerline

Project title: Leeudoringstad Powerline

Date screening report generated: 22/09/2022 09:51:20

Applicant: Upgrade Energy

Compiler: SiVEST

Compiler signature:

Application Category: Utilities Infrastructure|Electricity|Distribution and Transmission|Powerline

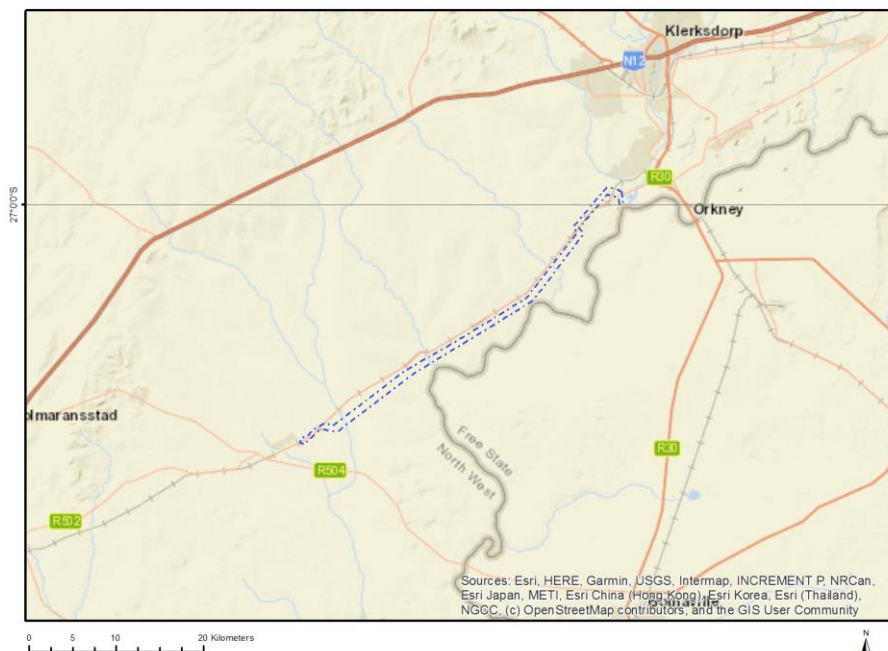
Table of Contents

Proposed Project Location	3
Orientation map 1: General location	3
Map of proposed site and relevant area(s)	4
Cadastral details of the proposed site	4
Wind and Solar developments with an approved Environmental Authorisation or applications under consideration within 30 km of the proposed area	6
Environmental Management Frameworks relevant to the application	6
Environmental screening results and assessment outcomes	6
Relevant development incentives, restrictions, exclusions or prohibitions	6
Map indicating proposed development footprint within applicable development incentive, restriction, exclusion or prohibition zones	7
Proposed Development Area Environmental Sensitivity	7
Specialist assessments identified	8
Results of the environmental sensitivity of the proposed area	10
MAP OF RELATIVE AGRICULTURE THEME SENSITIVITY	10
MAP OF RELATIVE ANIMAL SPECIES THEME SENSITIVITY	11
MAP OF RELATIVE AQUATIC BIODIVERSITY THEME SENSITIVITY	12
MAP OF RELATIVE ARCHAEOLOGICAL AND CULTURAL HERITAGE THEME SENSITIVITY	13
MAP OF RELATIVE CIVIL AVIATION THEME SENSITIVITY	14
MAP OF RELATIVE DEFENCE THEME SENSITIVITY	15
MAP OF RELATIVE PALEONTOLOGY THEME SENSITIVITY	16
MAP OF RELATIVE PLANT SPECIES THEME SENSITIVITY	17
MAP OF RELATIVE TERRESTRIAL BIODIVERSITY THEME SENSITIVITY	18

Orientation map 1: General location



Map of proposed site and relevant area(s)



Cadastral details of the proposed site

Property details:

No	Farm Name	Farm/ Erf No	Portion	Latitude	Longitude	Property Type
1	KLERKSDRIFT	16	0	27°7'3.6S	26°28'52.23E	Farm
2	NEVADA VAAL	48	0	27°8'52.18S	26°24'47.45E	Farm
3	LEEUEW BOSCH	44	0	27°11'27.59S	26°18'45.97E	Farm
4	GOEDGENOEG	433	0	27°0'0.85S	26°36'6.23E	Farm
5	ZWARTLAAGTE	46	0	27°9'39.82S	26°21'30.08E	Farm
6	MATJIESSPRUIT	145	0	27°9'41.65S	26°23'34.51E	Farm
7	WOLVEHUIS	114	0	27°2'58.81S	26°33'16.48E	Farm
8	YZERSPRUIT	113	0	27°3'53.29S	26°30'49.02E	Farm
9	WILDEBEESTKUIL	59	0	27°14'8.38S	26°16'18.07E	Farm
10	LEEUPAN	146	0	27°12'12.55S	26°21'22.17E	Farm
11	GOEDGENOEG	433	60	27°1'10.47S	26°34'29.14E	Farm Portion
12	GOEDGENOEG	433	24	27°0'37.28S	26°33'51.76E	Farm Portion
13	GOEDGENOEG	433	46	26°58'59.71S	26°35'59.49E	Farm Portion
14	LEEUEW BOSCH	44	42	27°12'12.87S	26°18'30.29E	Farm Portion
15	LEEUEW BOSCH	44	45	27°12'45.93S	26°17'52.3E	Farm Portion
16	LEEUEW BOSCH	44	35	27°13'5.87S	26°18'5.22E	Farm Portion
17	LEEUEW BOSCH	44	4	27°12'40.91S	26°19'22.99E	Farm Portion
18	LEEUEW BOSCH	44	29	27°12'41.76S	26°18'31.02E	Farm Portion
19	NEVADA VAAL	48	0	27°8'32.29S	26°25'21.09E	Farm Portion
20	GOEDGENOEG	433	89	26°59'30.02S	26°36'40.98E	Farm Portion
21	GOEDGENOEG	433	18	26°59'4.45S	26°36'19.76E	Farm Portion
22	LEEUPAN	146	0	27°12'12.55S	26°21'22.17E	Farm Portion
23	MATJIESSPRUIT	145	0	27°9'41.65S	26°23'34.51E	Farm Portion
24	LEEUEW BOSCH	44	44	27°12'53.07S	26°17'40.76E	Farm Portion
25	LEEUEW BOSCH	44	37	27°12'10.08S	26°18'15.54E	Farm Portion
26	KLERKSDRIFT	16	5	27°6'21.33S	26°30'9.64E	Farm Portion
27	GOEDGENOEG	433	19	26°59'25.31S	26°35'11.22E	Farm Portion

28	GOEDGENOEG	433	72	26°59'11.37S	26°36'48.08E	Farm Portion
29	GOEDGENOEG	433	62	27°0'29.53S	26°35'5.65E	Farm Portion
30	GOEDGENOEG	433	15	26°59'44.33S	26°35'55.92E	Farm Portion
31	ZWARTLAAGTE	46	7	27°10'37.01S	26°23'1.16E	Farm Portion
32	GOEDGENOEG	433	61	27°0'50.31S	26°34'47.12E	Farm Portion
33	GOEDGENOEG	433	33	27°0'21.15S	26°34'54.85E	Farm Portion
34	GOEDGENOEG	433	20	26°59'13.52S	26°36'55.69E	Farm Portion
35	GOEDGENOEG	433	53	27°0'15.82S	26°35'26.37E	Farm Portion
36	GOEDGENOEG	433	17	27°0'14.67S	26°35'22.39E	Farm Portion
37	WILDEBEESTKUIL	59	5	27°13'11.22S	26°16'40.39E	Farm Portion
38	LEEUEWBOSCH	44	47	27°11'31.73S	26°20'10.85E	Farm Portion
39	LEEUEWBOSCH	44	43	27°12'40.4S	26°17'58.17E	Farm Portion
40	LEEUEWBOSCH	44	36	27°12'51.14S	26°17'34.54E	Farm Portion
41	LEEUEWBOSCH	44	7	27°12'28.37S	26°17'31.82E	Farm Portion
42	KLERKSDRIFT	16	8	27°7'4.18S	26°29'25.49E	Farm Portion
43	GOEDGENOEG	433	11	27°1'40.45S	26°35'3.67E	Farm Portion
44	GOEDGENOEG	433	67	26°59'17.63S	26°36'32.92E	Farm Portion
45	GOEDGENOEG	433	81	26°59'42.8S	26°34'54.39E	Farm Portion
46	GOEDGENOEG	433	45	26°59'14.67S	26°35'30.42E	Farm Portion
47	WILDEBEESTKUIL	59	28	27°13'24.91S	26°16'26.07E	Farm Portion
48	LEEUEWBOSCH	44	38	27°12'13.43S	26°18'49.9E	Farm Portion
49	WILDEBEESTKUIL	59	14	27°13'10.59S	26°17'11.79E	Farm Portion
50	ZWARTLAAGTE	46	14	27°11'6.55S	26°21'25.07E	Farm Portion
51	WOLVEHUIS	114	3	27°4'35.47S	26°32'15.94E	Farm Portion
52	GOEDGENOEG	433	86	26°59'12.42S	26°36'40.27E	Farm Portion
53	GOEDGENOEG	433	84	26°58'49.41S	26°36'38.29E	Farm Portion
54	GOEDGENOEG	433	63	27°0'13.16S	26°35'24.47E	Farm Portion
55	GOEDGENOEG	433	12	27°0'9.43S	26°34'0.17E	Farm Portion
56	GOEDGENOEG	433	27	26°59'45.87S	26°37'0.25E	Farm Portion
57	GOEDGENOEG	433	35	26°59'8.52S	26°36'45.42E	Farm Portion
58	GOEDGENOEG	433	6	26°59'17.7S	26°36'56.39E	Farm Portion
59	KLERKSDRIFT	16	2	27°7'55.71S	26°27'59.29E	Farm Portion
60	GOEDGENOEG	433	4	26°59'15.13S	26°36'55.78E	Farm Portion
61	WOLVEHUIS	114	28	27°1'22.74S	26°34'17.99E	Farm Portion
62	WOLVEHUIS	114	9	27°1'36.91S	26°34'5.54E	Farm Portion
63	WILDEBEESTKUIL	59	13	27°13'28.87S	26°17'13.5E	Farm Portion
64	WOLVEHUIS	114	6	27°3'41.42S	26°34'25.92E	Farm Portion
65	YZERSPRUIT	113	30	27°4'55.41S	26°31'21.48E	Farm Portion
66	WOLVEHUIS	114	25	27°4'46.21S	26°35'2.17E	Farm Portion
67	YZERSPRUIT	113	5	27°6'3.7S	26°30'44.23E	Farm Portion
68	YZERSPRUIT	113	0	27°5'4.01S	26°31'59.7E	Farm Portion
69	WOLVEHUIS	114	21	27°2'11.46S	26°34'39.64E	Farm Portion
70	WOLVEHUIS	114	7	27°2'48.4S	26°34'14.07E	Farm Portion
71	ZWARTLAAGTE	46	6	27°10'41.85S	26°22'10.99E	Farm Portion
72	YZERSPRUIT	113	36	27°5'44.53S	26°30'54.89E	Farm Portion
73	WOLVEHUIS	114	36	27°3'37.28S	26°32'54.54E	Farm Portion
74	WOLVEHUIS	114	8	27°1'31.81S	26°34'6.87E	Farm Portion
75	YZERSPRUIT	113	6	27°5'22.43S	26°31'16.31E	Farm Portion
76	WOLVEHUIS	114	20	27°1'16.82S	26°33'39.77E	Farm Portion

Development footprint¹ vertices:
No development footprint(s) specified.

¹ “development footprint”, means the area within the site on which the development will take place and includes all ancillary developments for example roads, power lines, boundary walls, paving etc. which require vegetation clearance or which will be disturbed and for which the application has been submitted.

Wind and Solar developments with an approved Environmental Authorisation or applications under consideration within 30 km of the proposed area

No	EIA Reference No	Classification	Status of application	Distance from proposed area (km)
1	12/12/20/2513/3	Solar PV	Approved	6.4
2	14/12/16/3/3/2/778	Solar PV	Approved	26.9
3	12/12/20/2513/1	Solar PV	Approved	6.4
4	14/12/16/3/3/1/1519	Solar PV	Approved	0
5	12/12/20/2513/2	Solar PV	Approved	13
6	14/12/16/3/3/2/954	Solar PV	Approved	0
7	12/12/20/2513/1/AM3	Solar PV	Approved	6.4
8	14/12/16/3/3/2/777	Solar PV	Approved	24.6
9	12/12/20/2513/4	Solar PV	Approved	6.4

Environmental Management Frameworks relevant to the application

No intersections with EMF areas found.

Environmental screening results and assessment outcomes

The following sections contain a summary of any development incentives, restrictions, exclusions or prohibitions that apply to the proposed development site as well as the most environmental sensitive features on the site based on the site sensitivity screening results for the application classification that was selected. The application classification selected for this report is:

Utilities Infrastructure | Electricity | Distribution and Transmission | Powerline.

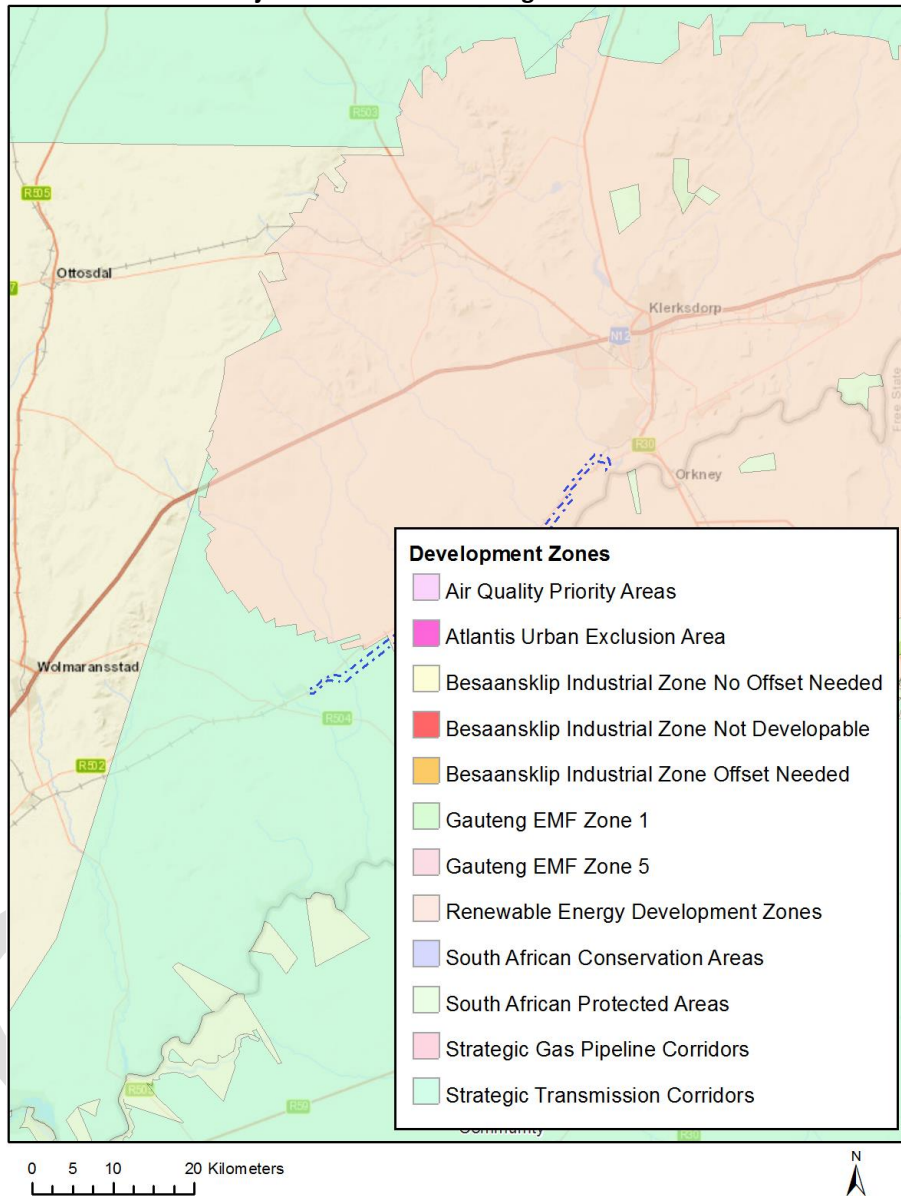
Relevant development incentives, restrictions, exclusions or prohibitions

The following development incentives, restrictions, exclusions or prohibitions and their implications that apply to this site are indicated below.

Incentive, restriction or prohibition	Implication
Strategic Transmission Corridor-Central corridor	https://screening.environment.gov.za/ScreeningDownloads/DevelopmentZones/Combined_EGI.pdf
Renewable energy development zones 10-	https://screening.environment.gov.za/ScreeningDownloads/DevelopmentZones/Combined_REDZ.pdf

Map indicating proposed development footprint within applicable development incentive, restriction, exclusion or prohibition zones

Project Location: Leeudoringstad Powerline



Proposed Development Area Environmental Sensitivity

The following summary of the development site environmental sensitivities is identified. Only the highest environmental sensitivity is indicated. The footprint environmental sensitivities for the proposed development footprint as identified, are indicative only and must be verified on site by a suitably qualified person before the specialist assessments identified below can be confirmed.

Theme	Very High	High	Medium	Low
-------	-----------	------	--------	-----

	sensitivity	sensitivity	sensitivity	sensitivity
Agriculture Theme		X		
Animal Species Theme		X		
Aquatic Biodiversity Theme	X			
Archaeological and Cultural Heritage Theme	X			
Civil Aviation Theme		X		
Defence Theme				X
Paleontology Theme			X	
Plant Species Theme			X	
Terrestrial Biodiversity Theme	X			

Specialist assessments identified

Based on the selected classification, and the environmental sensitivities of the proposed development footprint, the following list of specialist assessments have been identified for inclusion in the assessment report. It is the responsibility of the EAP to confirm this list and to motivate in the assessment report, the reason for not including any of the identified specialist study including the provision of photographic evidence of the site situation.

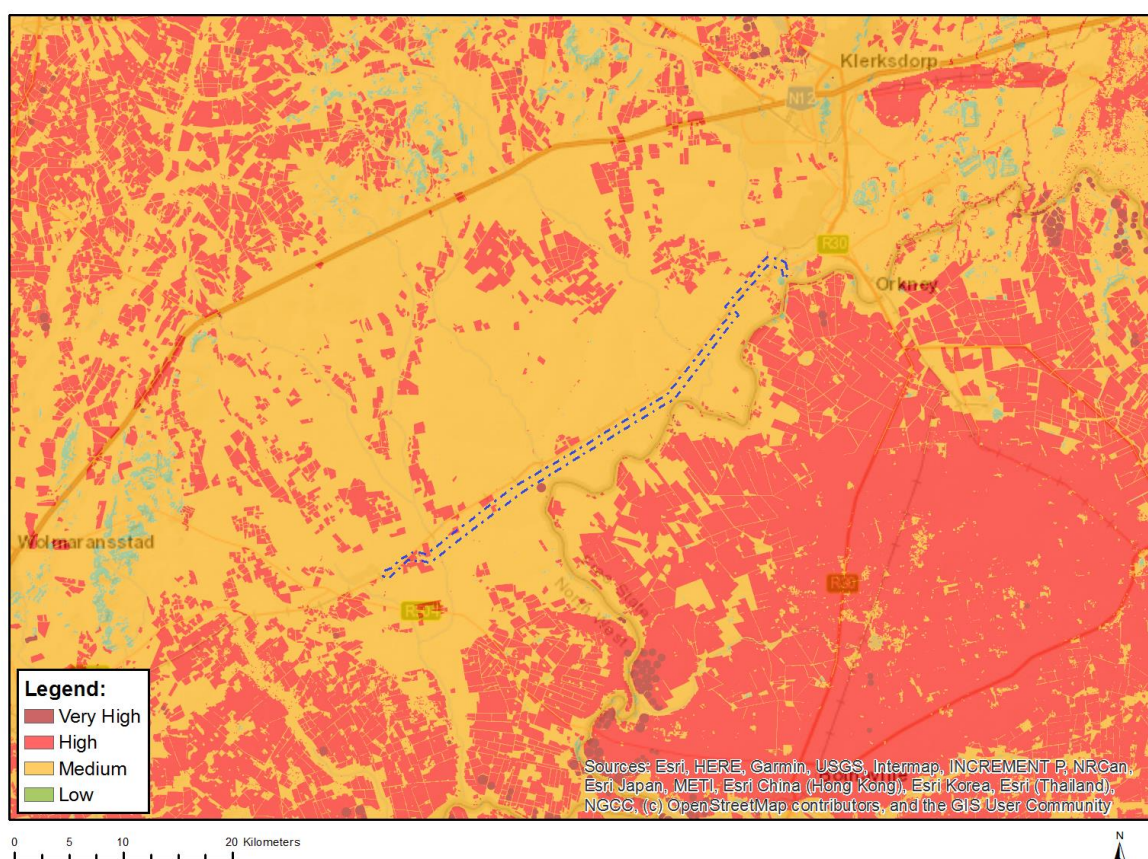
N o	Special ist assess ment	Assessment Protocol
1	Agricultural Impact Assessment	https://screening.environment.gov.za/ScreeningDownloads/AssessmentProtocols/Gazetted_General_Agriculture_Assessment_Protocols.pdf
2	Landscape/Visual Impact Assessment	https://screening.environment.gov.za/ScreeningDownloads/AssessmentProtocols/Gazetted_General_Requirement_Assessment_Protocols.pdf
3	Archaeological and Cultural Heritage Impact Assessment	https://screening.environment.gov.za/ScreeningDownloads/AssessmentProtocols/Gazetted_General_Requirement_Assessment_Protocols.pdf
4	Paleontology Impact Assessment	https://screening.environment.gov.za/ScreeningDownloads/AssessmentProtocols/Gazetted_General_Requirement_Assessment_Protocols.pdf
5	Terrestrial Biodiversity Impact Assessment	https://screening.environment.gov.za/ScreeningDownloads/AssessmentProtocols/Gazetted_Terrestrial_Biodiversity_Assessment_Protocols.pdf
6	Aquatic Biodiversity	https://screening.environment.gov.za/ScreeningDownloads/AssessmentProtocols/Gazetted_Aquatic_Biodiversity_Assessment_Protocols.pdf

	Impact Assessment	
7	Avian Impact Assessment	https://screening.environment.gov.za/ScreeningDownloads/AssessmentProtocols/Gazetted_Avifauna_Assessment_Protocols.pdf
8	Civil Aviation Assessment	https://screening.environment.gov.za/ScreeningDownloads/AssessmentProtocols/Gazetted_Civil_Aviation_Installations_Assessment_Protocols.pdf
9	RFI Assessment	https://screening.environment.gov.za/ScreeningDownloads/AssessmentProtocols/Gazetted_General_Requirement_Assessment_Protocols.pdf
10	Geotechnical Assessment	https://screening.environment.gov.za/ScreeningDownloads/AssessmentProtocols/Gazetted_General_Requirement_Assessment_Protocols.pdf
11	Plant Species Assessment	https://screening.environment.gov.za/ScreeningDownloads/AssessmentProtocols/Gazetted_Plant_Species_Assessment_Protocols.pdf
12	Animal Species Assessment	https://screening.environment.gov.za/ScreeningDownloads/AssessmentProtocols/Gazetted_Animal_Species_Assessment_Protocols.pdf

Results of the environmental sensitivity of the proposed area.

The following section represents the results of the screening for environmental sensitivity of the proposed site for relevant environmental themes associated with the project classification. It is the duty of the EAP to ensure that the environmental themes provided by the screening tool are comprehensive and complete for the project. Refer to the disclaimer.

MAP OF RELATIVE AGRICULTURE THEME SENSITIVITY

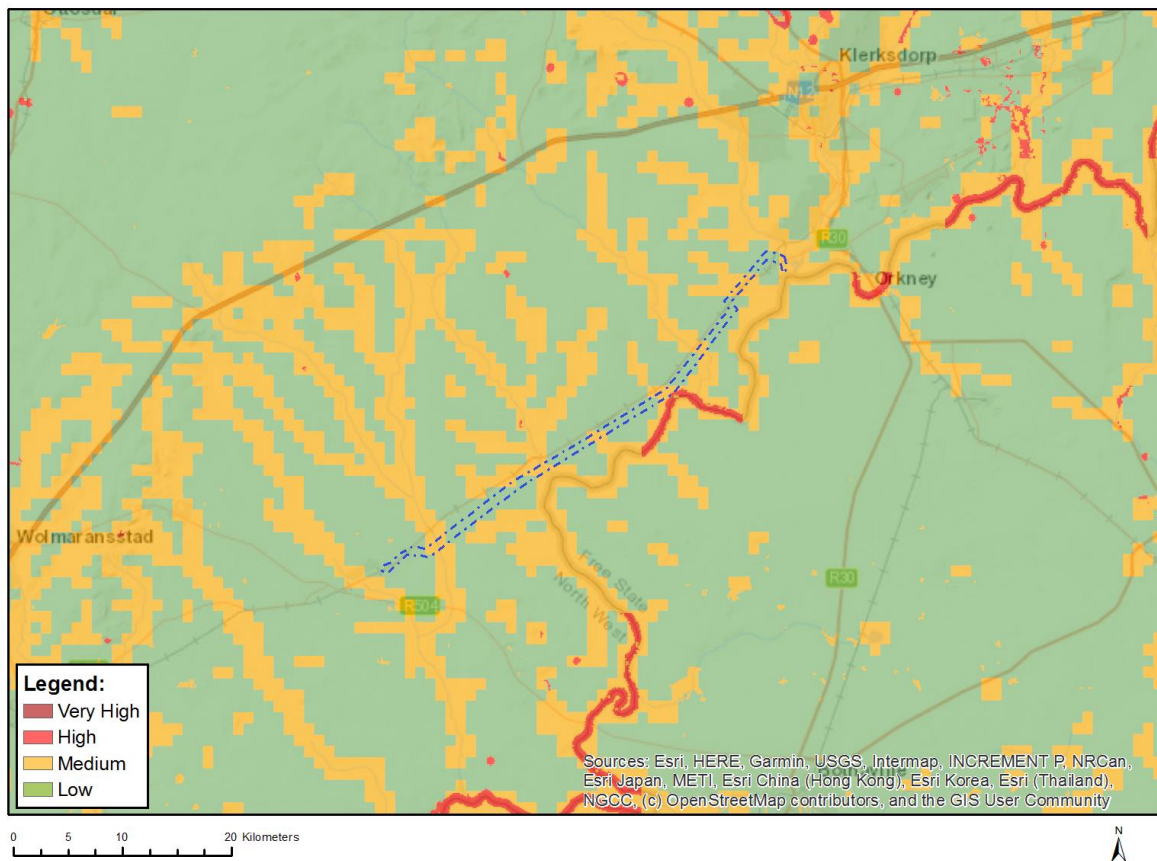


Very High sensitivity	High sensitivity	Medium sensitivity	Low sensitivity
	X		

Sensitivity Features:

Sensitivity	Feature(s)
High	Land capability;09. Moderate-High/10. Moderate-High
High	Annual Crop Cultivation / Planted Pastures Rotation;Land capability;06. Low-Moderate/07. Low-Moderate/08. Moderate
High	Old Fields;Land capability;06. Low-Moderate/07. Low-Moderate/08. Moderate
Low	Land capability;01. Very low/02. Very low/03. Low-Very low/04. Low-Very low/05. Low
Medium	Land capability;06. Low-Moderate/07. Low-Moderate/08. Moderate

MAP OF RELATIVE ANIMAL SPECIES THEME SENSITIVITY



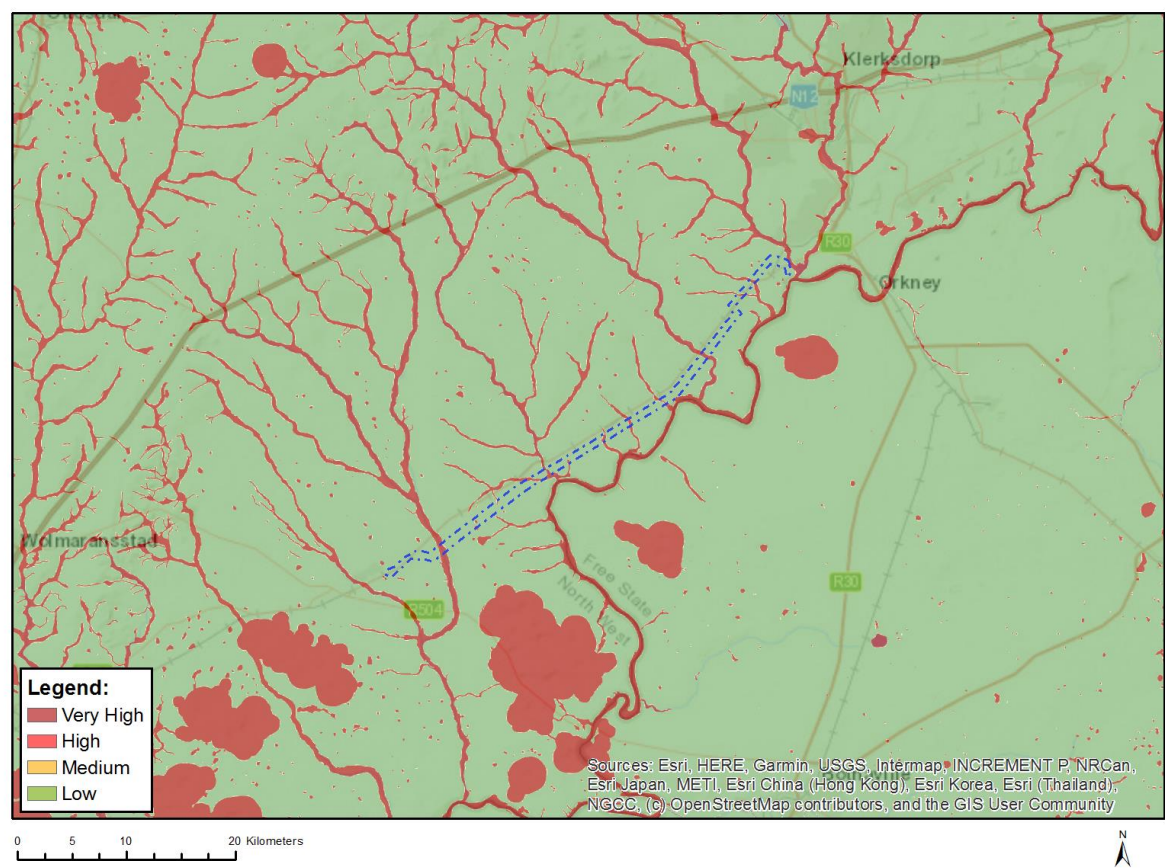
Where only a sensitive plant unique number or sensitive animal unique number is provided in the screening report and an assessment is required, the environmental assessment practitioner (EAP) or specialist is required to email SANBI at eiadatarequests@sanbi.org.za listing all sensitive species with their unique identifiers for which information is required. The name has been withheld as the species may be prone to illegal harvesting and must be protected. SANBI will release the actual species name after the details of the EAP or specialist have been documented.

Very High sensitivity	High sensitivity	Medium sensitivity	Low sensitivity
	X		

Sensitivity Features:

Sensitivity	Feature(s)
High	Aves-Hydroprogne caspia
Low	Subject to confirmation
Medium	Mammalia-Hydricis maculicollis

MAP OF RELATIVE AQUATIC BIODIVERSITY THEME SENSITIVITY

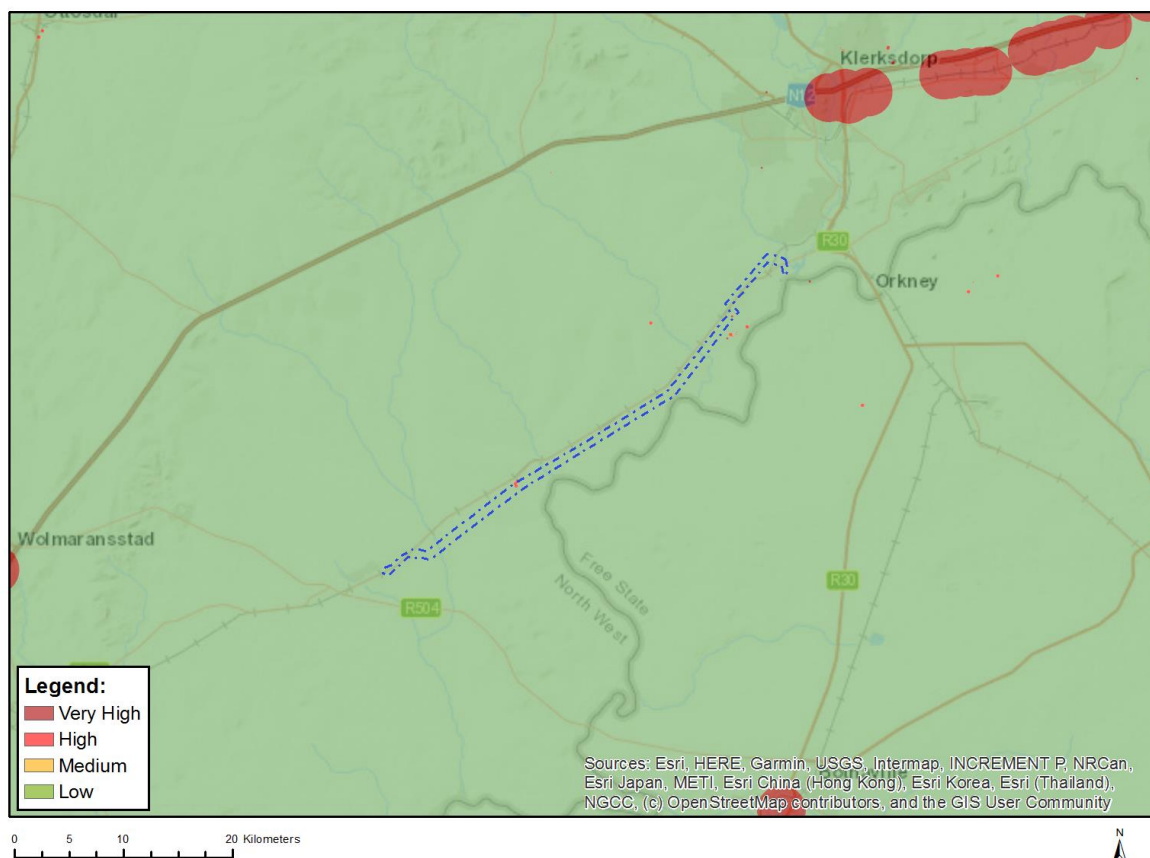


Very High sensitivity	High sensitivity	Medium sensitivity	Low sensitivity
X			

Sensitivity Features:

Sensitivity	Feature(s)
Low	Low sensitivity
Very High	Aquatic CBAs
Very High	Wetlands and Estuaries

MAP OF RELATIVE ARCHAEOLOGICAL AND CULTURAL HERITAGE THEME SENSITIVITY

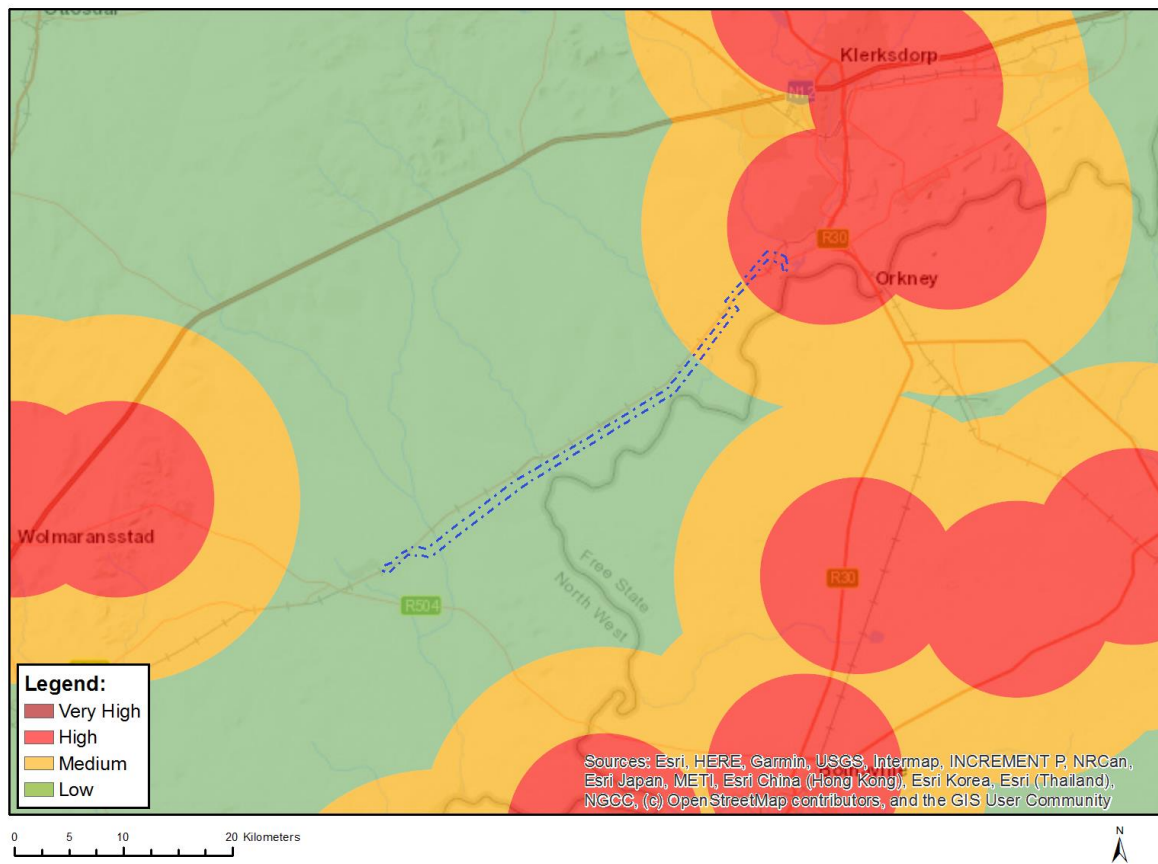


Very High sensitivity	High sensitivity	Medium sensitivity	Low sensitivity
X			

Sensitivity Features:

Sensitivity	Feature(s)
High	Within 150m of a Grade IIIa Heritage site
High	Within 50m of a Grade IIIc Heritage site
Low	Low sensitivity
Very High	Within 100m of an Ungraded Heritage site

MAP OF RELATIVE CIVIL AVIATION THEME SENSITIVITY

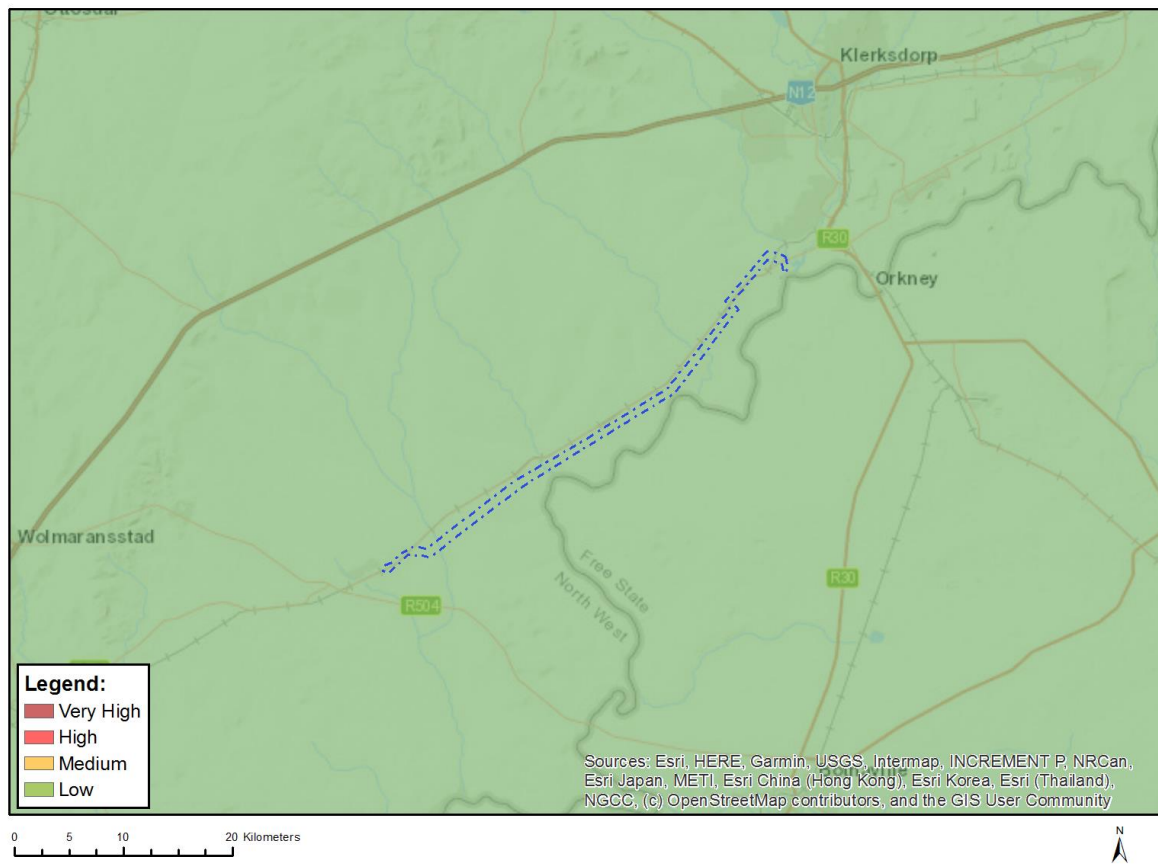


Very High sensitivity	High sensitivity	Medium sensitivity	Low sensitivity
	X		

Sensitivity Features:

Sensitivity	Feature(s)
High	Within 8 km of other civil aviation aerodrome
Low	Low sensitivity
Medium	Between 8 and 15 km of other civil aviation aerodrome

MAP OF RELATIVE DEFENCE THEME SENSITIVITY

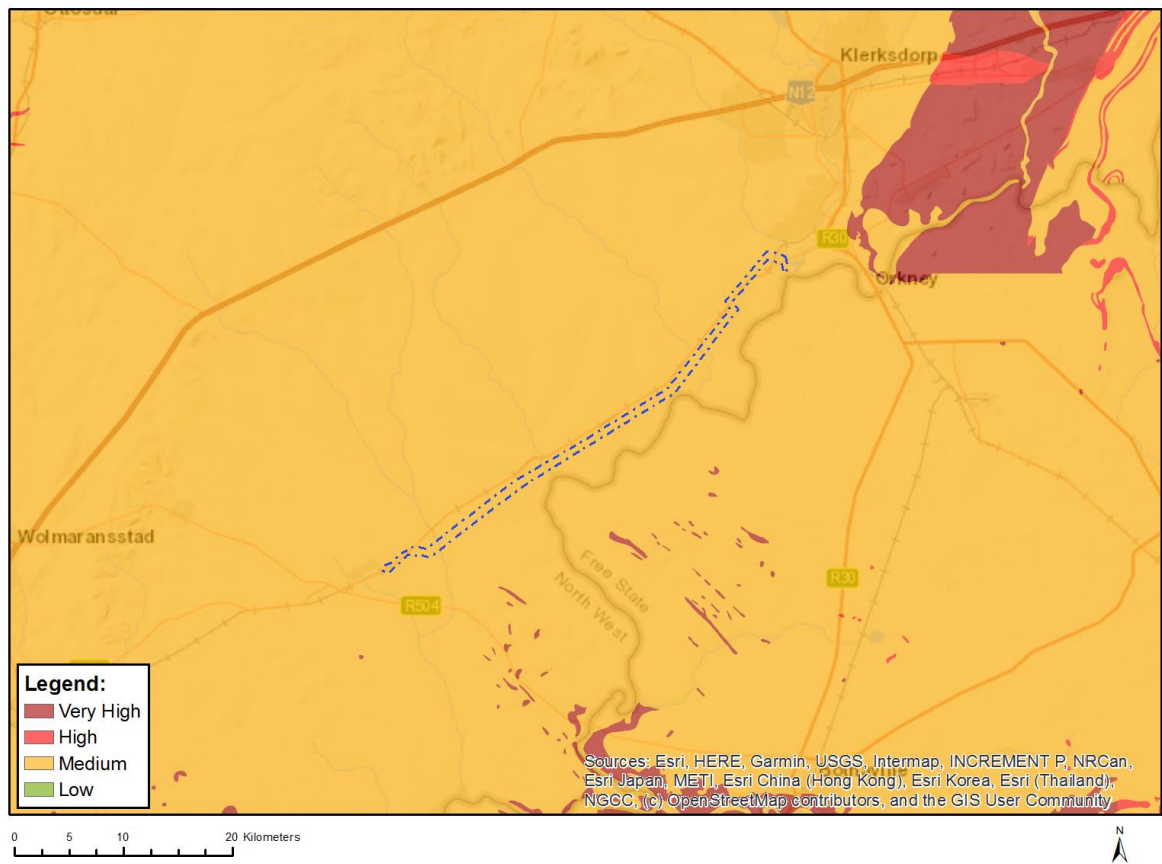


Very High sensitivity	High sensitivity	Medium sensitivity	Low sensitivity
			X

Sensitivity Features:

Sensitivity	Feature(s)
Low	Low Sensitivity

MAP OF RELATIVE PALEONTOLOGY THEME SENSITIVITY

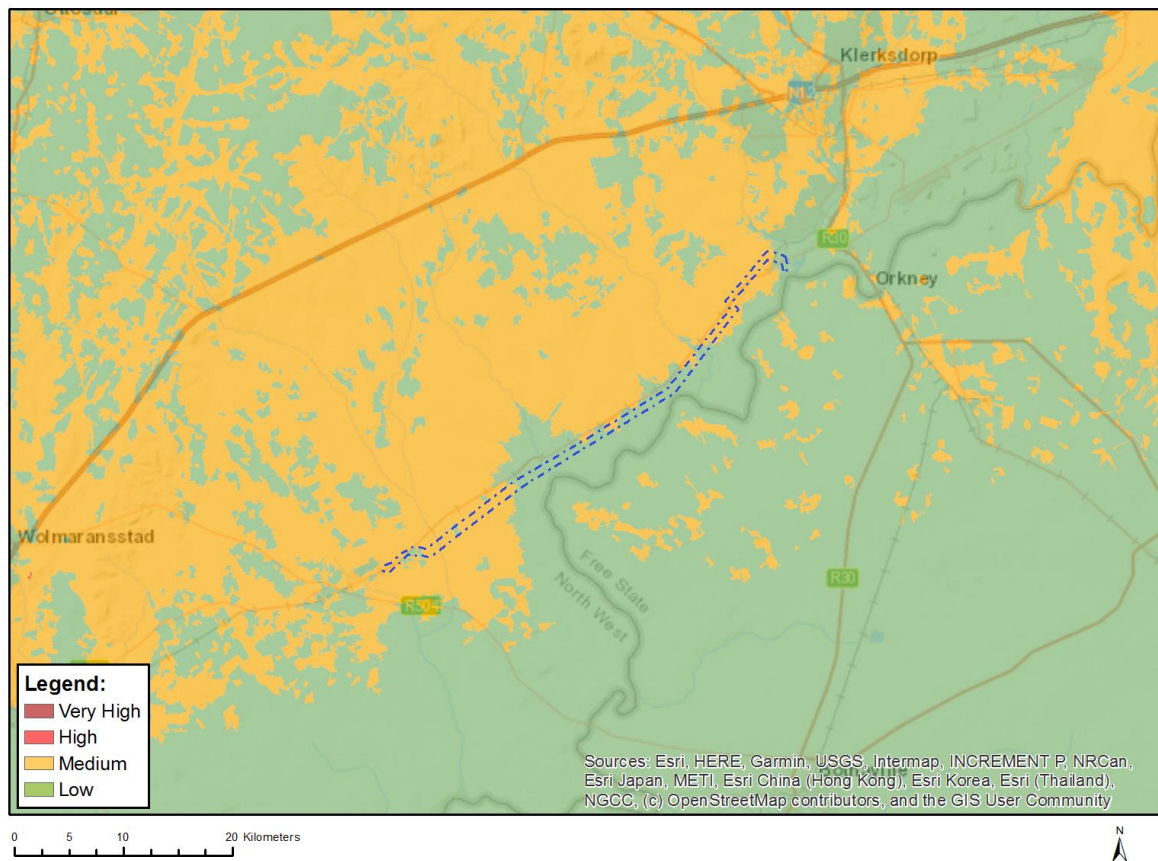


Very High sensitivity	High sensitivity	Medium sensitivity	Low sensitivity
		X	

Sensitivity Features:

Sensitivity	Feature(s)
Low	Features with a Low paleontological sensitivity
Medium	Features with a Medium paleontological sensitivity

MAP OF RELATIVE PLANT SPECIES THEME SENSITIVITY



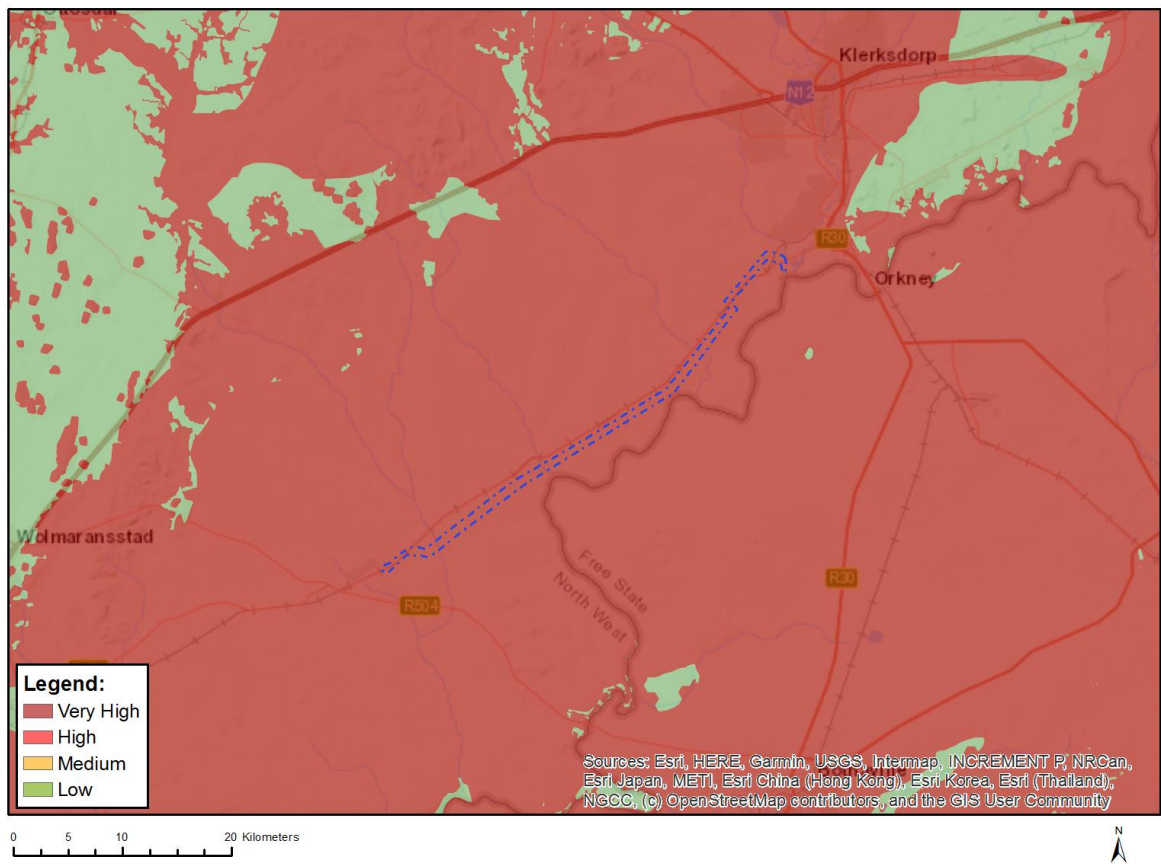
Where only a sensitive plant unique number or sensitive animal unique number is provided in the screening report and an assessment is required, the environmental assessment practitioner (EAP) or specialist is required to email SANBI at eiadatarequests@sanbi.org.za listing all sensitive species with their unique identifiers for which information is required. The name has been withheld as the species may be prone to illegal harvesting and must be protected. SANBI will release the actual species name after the details of the EAP or specialist have been documented.

Very High sensitivity	High sensitivity	Medium sensitivity	Low sensitivity
		X	

Sensitivity Features:

Sensitivity	Feature(s)
Low	Low Sensitivity
Medium	Sensitive species 1261

MAP OF RELATIVE TERRESTRIAL BIODIVERSITY THEME SENSITIVITY



Very High sensitivity	High sensitivity	Medium sensitivity	Low sensitivity
X			

Sensitivity Features:

Sensitivity	Feature(s)
Very High	Critical biodiversity area 2
Very High	Ecological support area 1
Very High	Ecological support area 2
Very High	Protected Areas Expansion Strategy
Very High	Endangered ecosystem