



DIE COURIER SPORT



Twee broers wat 'n deel van hul laerskooljare op die skoolbanke van Voorbereidingskool en Niko Brummer Primêr deurgebring het, Lloyd en Murray Koster, het op Saterdag 19 November in 'n opwarmingswedstryd vir die Sharks teen die Cheetahs in Durban gespeel. Murray en Lloyd is die seuns van Ralph en Dianna Koster, bekende inwoners van die distrik. Foto: Steve Haag Sports

Hierdie week se slagpryse

Karoo Lam se aankooppryse per kg karkasgewig aan die boer vir Dorper (Merino varieer na gelang van die wollengte van die vel):

Week: 28 November - 2 Desember 2022

Lam: A2, 3 R94.00 Skaap: B2, 3 R72.00
A4 R81.00 B4 R59.00

Jong skaap: AB2, 3 R75.00 Ou skaap: C2, 3 R70.00
AB4 R62.00 C4 R57.00

Bogenoemde pryse is BTW uitgesluit. Die vyfde kwart (vel en afval) is ingesluit by die prys.

George se Oumotorskou trek in 2023 Italiaanse baadjie aan



Die 26ste Oumotorskou in George gaan volgende jaar 'n Italiaanse baadjie aantrek. Die tema van die skou is op Donderdag 10 November tydens 'n amptelike bekendstelling van die geleentheid bekend gemaak.

Die skou word jaarliks deur die Suid-Kaapse Oumotorklub gereël. Talle rygoed, nuut sowel as uit die verlede, het die gaste Donderdagoggend buite die King George Protea-hotel by die bekendstelling begroet.

Die tema van volgende jaar se skou is Italiaans, hetsy dit motors, motorfietsse soos Vespas of selfs trekkers is. Ander motors sal ook te sien wees.

Leon van Wyk, George se burgemeester, het gesê die skou is deel van die dorp se ekonomie en sorg vir 'n groot ekonomiese inspuiting.

Volgens Van Wyk is dit veral ná die Covid-19-pandemie, toe geen toeriste hierheen gekom het nie, nodig om besoekers na die dorp te lok. "As ek my sin kon kry, sal daar elke naweek iets in die dorp gehou word. Enigiets wat die ekonomie help, word verwelkom."

Alewijn Dippenaar, voorsitter van die skoukomitee, het gesê Italiaanse motors is bekend vir hul styl en verrigting. Volgens hom word daar reeds hard agter die skerms vir die aanbieding van die skou gewerk.

Hy sê talle ander organisasies is ook by die skou betrokke en onder meer die Carpe Diem-skool trek voordeel daaruit deur parkeerplek teen betaling aan te bied.

Meer as 1 000 uitstallers en 8 000 besoekers het vanjaar se skou bygewoon.

Die skou vind op 11 en 12 Februarie 2023 op die terrein van die Hoër Tegniese Skool Eden in George plaas.

Serious business at GR Bowling Club

The third round of the Business League Bowls competition continued on the greens of Graaff-Reinet Bowling Club on Thursday 17 November.

Thirty-six teams are competing and it's no joking matter with most teams going all out to win while having fun.

Pick n Pay is in the lead, with PG Glass second and Botha's Garage in third place.

The popular event will continue each Thursday until 1 December.

The next round was played on 24 November.

Spectators are encouraged to attend and support their favourite team.

SIVEST
Environmental Division



NOTICE OF THE BASIC ASSESSMENTS (BAs) FOR THE PROPOSED CONSTRUCTION AND OPERATION OF THE CERES WEF CLUSTER CONSISTING OF 250 MW PATATSKLOOF WEF, BATTERY ENERGY STORAGE SYSTEMS, ASSOCIATED GRID CONNECTION AND 200 MW KAREE WEF, BATTERY ENERGY STORAGE SYSTEMS, ASSOCIATED GRID CONNECTION INFRASTRUCTURE LOCATED NEAR CERES IN THE WITZENBERG LOCAL MUNICIPALITY, CAPE WINELANDS DISTRICT, IN THE WESTERN CAPE PROVINCE.

In terms of the National Environmental Management Act, 1998 (Act No. 107 of 1998) (NEMA) as amended and the Environmental Impact Assessment (EIA) Regulations, under Government Notices No R982, R983, R984 and R985 promulgated on 4 December 2014 and amended on 07 April 2017, notice is hereby given that South Africa Mainstream Renewable Power Developments (Pty) Ltd (hereafter referred to as "Mainstream"), has appointed SiVEST SA (Pty) Ltd, as the independent Environmental Assessment Practitioner (EAP), to undertake the required Environmental Impact Assessment (EIA) and Basic Assessment (BA) and Public Participation Processes (PPP) for the above-mentioned developments. The competent authority for the required EIA Processes is the National Department of Forestry, Fisheries and the Environment (DFFE).

PROJECT LOCATION

The proposed Patatskloof WEF and grid connection infrastructure is located approximately 18km and 25km north-east respectively of Touws River in the Western Cape Province and the proposed Karee WEF and grid connection infrastructure is located approximately 12km and 20km north respectively of Touws River in the Western Cape Province. The proposed WEF and Grid projects are located within the Witzenberg Local Municipality, in the Cape Winelands District Municipality on the following properties:

Applicant	Project Name	Affected Properties
South Africa Mainstream Renewable Power Developments (Pty) Ltd	Karee WEF	Farm Sadawa No 239 Farm Tierberg No 258; and Farm Voetpads Kloof No 253.
	Karee grid connection	Farm Sadawa No 239; Farm Platfontein No 240; And Farm Tierberg No 258.
	Patatskloof WEF	Remainder of the Farm Upper Stinkfontein No 246 Remainder of the Farm Upper Melkbosch Kraal No 250; Portion 1 of the Farm Drinkwaters Kloof No 251.
	Patatskloof grid connection	Farm Platfontein No 240 Portion 1 Of the Farm Tooverberg No 244 Remainder Of the Farm Tooverberg No 244 Farm Lower Stinkfontein No 245 Remainder Of the Farm Upper Stinkfontein No 246 Portion 1 Of the Farm Drinkwaters Kloof No 251 Remainder Of the Farm Drinkwaters Kloof No 251

PROJECT DESCRIPTION

WEF: The proposed Patatskloof and Karee WEFs will comprise of wind turbines and associated infrastructure. Each proposed WEF will also consist of a 33/132kV on-site substation and Battery Energy Storage Systems (BESS), located next to the proposed on-site substations.

Grid: The proposed Patatskloof and Karee projects will each include the development of one (1) new 33/132kV on-site substation and/or collector substation as well as one (1) new associated 132kV overhead power line.

To register as an Interested and / or Affected Party (I&AP) and / or to obtain additional information please submit your name, contact details (telephone number, postal address, and email address) and the interest which you have in the application to SiVEST as per the details below and please reference 'Patatskloof WEF', 'Karee WEF', 'Patatskloof Grid' or 'Karee Grid' in your correspondence:

SIVEST Environmental Division :

Contact: Hlengiwe Ntuli
Tel: (011) 798 0600
P O Box 2921

Fax: (011) 803 7272
Rivonia 2128

E-mail: sivest_ppp@sivest.com
Website: www.sivest.com

Copies of the draft basic assessment reports can be obtained on the SiVEST website at: <https://www.sivest.com/za/download> or emailed on request. The comment period for the draft BA report will run from **05 December 2022 until 26 January 2023**
I.T.O POPIA, you hereby declare and confirm that you, as an I&AP providing information, consent for your information to be gathered, stored and distributed for the purpose of this project.

KENNISGEWING VAN 'N BASIESE EVALUERINGSPROSES (BE) VIR DIE BEOOGDE KAREE WINDKRAGGAANLEG (WEF) EN 'N APARTE BE-PROSES VIR DIE BEOOGDE KRAGNETINFRASTRUKTUUR NABY CERES, WES-KAAPPROVINSIE

Ingevolge die Nasionale Wet op Omgewingsbestuur, 1998 (Wet 107 van 1998) (NEMA), soos gewysig, en die Regulasies op Omgewingsimpakevaluering (OIE-regulasies) kragtens Staatskennisgewing R982, R983, R984 en R985 wat op 4 Desember 2014 afgekondig en op 7 April 2017 gewysig is, geskied kennis hiermee dat South Africa Mainstream Renewable Power Developments (Edms.) Bpk. (hierna "Mainstream" genoem) SiVEST SA (Edms.) Bpk. aangestel het as die onafhanklike Omgewingsevalueringpraktisyn (OEP) om die nodige Basiese Evaluering (BE's) en Openbare Deelnameprosesse (ODP's) vir die ontwikkeling te onderneem. Die bevoegde owerheid vir die vereiste BE-prosesse is die Nasionale Departement van Bosbou, Visserye en Omgewingsake (DBVO).

PROJEKBESKRYWING

Ter staving van die noodzaak om weg te beweeg van steenkool as 'n hoofbron van elektrisiteit en om meer volhoubare en omgewingsvriendelike energiehulpbronne te kry, het Suid-Afrika 'n program vir die ontwikkeling van infrastruktuur van stapel gestuur wat deur verskeie staatsinisiatiewe ondersteun word. In reaksie op hierdie doelwit, beoog Mainstream die oprigting en bedryf van die Karee WEF met verwante infrastruktuur naby Ceres in die Wes-Kaapprovinsie. Die beoogde WEF is geleë in die Komsberg Hernubare Kragontwikkelingsone (REDZ 2), soos gepubliseer ingevolge Artikel 24(5) van NEMA. Gevolglik word 'n BE-proses vir beide die WEF en die verwante Roosterkonneksie benodig. Hoewel die komponente onderhewig sal wees aan aparte BE-prosesse, sal die ODP vir die twee gekombineer word.

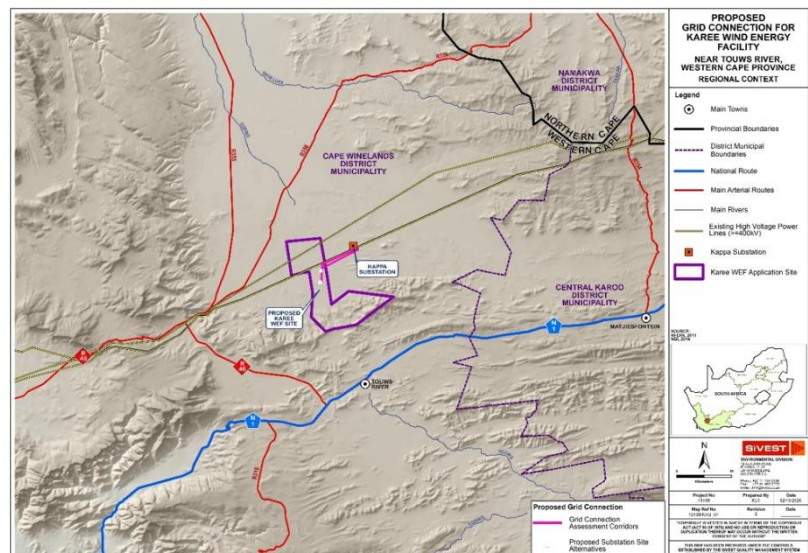
Op hierdie stadium word verwag dat die beoogde Karee Windkragaanleg (WEF) sal bestaan uit hoogstens 35 windturbines, elk tussen 4 MW en 6,5 MW, met 'n maksimum uitvoervermoë van sowat 200 MW, asook 'n 33/132 kV interne substasie en Batterykragbergingsaanleg (BESS). Die elektrisiteit wat deur die beoogde WEF-ontwikkeling opgewek word, sal via 'n 132 kV oorhoofse kraglyn by die nasionale kragnet ingevoer word. Die finale ontwerpbesonderhede, tesame met die struktuuroriëntasie van die turbines, sal beskikbaar raak tydens die gedetailleerde ontwerpfasie van die beoogde ontwikkeling vóór konstruksie 'n aanvang neem, en sal toegelig word deur die uitkoms van die spesialisstudies.

PROJEKLIIGING

Die beoogde WEF en verwante roosterkonneksie-infrastruktuur is sowat 12 km noord van Touwsrivier in die Wes-Kaapprovinsie geleë en is in die Witzenberg Plaaslike Munisipaliteit in die Kaapse Wynlande Distriksmunisipaliteit. Die aansoekterrein is sowat 11 841 hektaar (ha) in omvang en behels die volgende plaasgedeeltes:

- Plaas Sadawa No. 239;
- Plaas Tierberg No. 258; en
- Plaas Voetpads Kloof No. 253.

'n Kleiner boubare gebied (1 753,1 ha) is geïdentifiseer as gevolg van 'n voorlopige geskiktheidsevaluering wat deur Mainstream onderneem is en hierdie gebied sal waarskynlik verder op grond van uitkomst van verskeie spesialisstudies, wat as deel van die BE-prosesse onderneem word, verfyn word.



Om as 'n Belangstellende en/of Geaffekteerde Party (B&GP) te registreer en/of om bykomende inligting te bekom, moet u asseblief u naam, kontakbesonderhede (telefoonnummer, pos- en e-posadres) en die belang wat u by die aansoek het, aan SiVEST verstrek by die onderstaande besonderhede en die verwysing 'Karee WEF and Grid' in u korrespondensie gebruik:

Hlengiwe Ntuli

SiVEST Environmental
Posbus 2921
RIVONIA
2128

Tel: 011 798 0600
Faks: 011 803 7272
E-pos: sivest_ppp@sivest.co.za
Webwerf: www.sivest.com

NOTICE OF A BASIC ASSESSMENT (BA) PROCESS FOR THE PROPOSED KAREE WIND ENERGY FACILITY (WEF) AND SEPERATE BA PROCESS FOR THE PROPOSED GRID INFRASTRUCTURE, NEAR CERES, WESTERN CAPE PROVINCE

In terms of the National Environmental Management Act, 1998 (Act No. 107 of 1998) (NEMA) as amended and the Environmental Impact Assessment (EIA) Regulations, under Government Notices No R982, R983, R984 and R985 promulgated on 4 December 2014 and amended on 07 April 2017, notice is hereby given that South Africa Mainstream Renewable Power Developments (Pty) Ltd (hereafter referred to as "Mainstream"), has appointed SiVEST SA (Pty) Ltd, as the independent Environmental Assessment Practitioner (EAP), to undertake the required Basic Assessments (BAs) and Public Participation Processes (PPP) for the development. The competent authority for the required BA Processes is the National Department of Forestry, Fisheries and the Environment (DFFE).

PROJECT DESCRIPTION

In support of the need to divert from coal as a main source of electricity and to find more sustainable and environmentally friendly energy resources, South Africa has embarked on an infrastructure growth programme supported by various government initiatives. In response to this goal, Mainstream is proposing to construct and operate the Karee WEF with associated infrastructure, near Ceres in the Western Cape Province. The proposed WEF is located within the Komsberg Renewable Energy Development Zone (REDZ 2), as published in terms of Section 24(5) of the NEMA. Accordingly, a BA process is required for both the WEF and the associated Grid Connection. While these will be subject to separate BA Processes, the PPP will be combined for both.

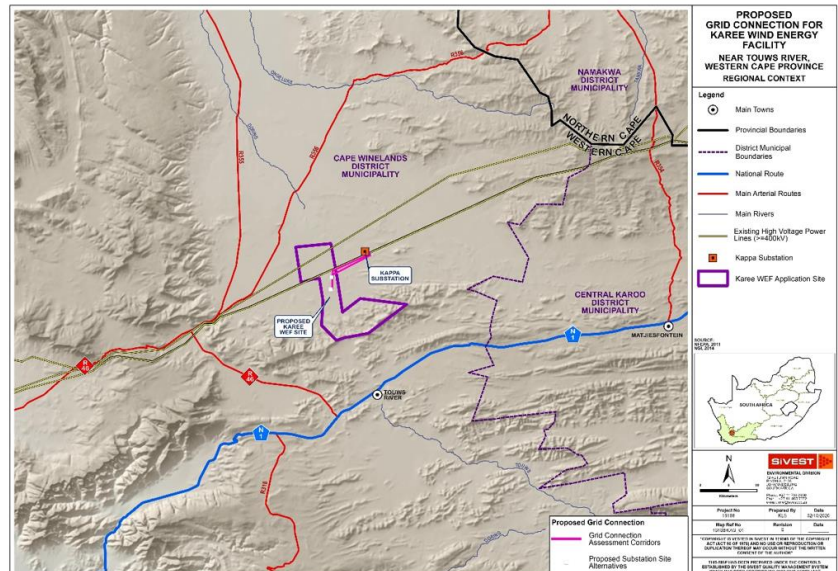
At this stage it is anticipated that the proposed Karee Wind Energy Facility (WEF) will comprise of up to 35 wind turbines, each between 4MW and 6.5MW, with a maximum export capacity of approximately 200MW, 33/132kV on-site substation and Battery Energy Storage Facility (BESS). The electricity generated by the proposed WEF development will be fed into the national grid via a 132kV overhead power line. The final design details along with the structure orientation of the turbines will become available during the detailed design phase of the proposed development prior to the start of construction and will be informed by the outcome of the specialist studies.

PROJECT LOCATION

The proposed WEF and associated grid connection infrastructure are located approximately 12km north of Touws River in the Western Cape Province, within the Witzenberg Local Municipality, in the Cape Winelands District Municipality, in the Cape Winelands District Municipality. The application site is approximately 11 841 hectares (ha) in extent and incorporates the following farm portions:

- Farm Sadawa No 239
- Farm Tierberg No 258; and
- Farm Voetpads Kloof No 253

A smaller buildable area (1753.1 ha) has been identified as a result of a preliminary suitability assessment undertaken by Mainstream and this area is likely to be further refined based on outcomes of various specialist studies being conducted as part of the BA processes.



To register as an Interested and / or Affected Party (I&AP) and / or to obtain additional information please submit your name, contact details (telephone number, postal address and email address) and the interest which you have in the application to SiVEST as per the details below and please reference the 'Karee WEF and Grid' in your correspondence:

Hlengiwe Ntuli

SiVEST Environmental
P O Box 2921
RIVONIA
2128

Tel: (011) 798 0600
Fax: (011) 803 7272
E-mail: sivest_ppp@sivest.co.za
Website: www.sivest.com

SiVEST

4 Pencarrow Crescent, La Lucia Ridge Office Estate,
Umhlanga Rocks. 4320
PO Box 1899, Umhlanga Rocks. 4320
KwaZulu-Natal, South Africa

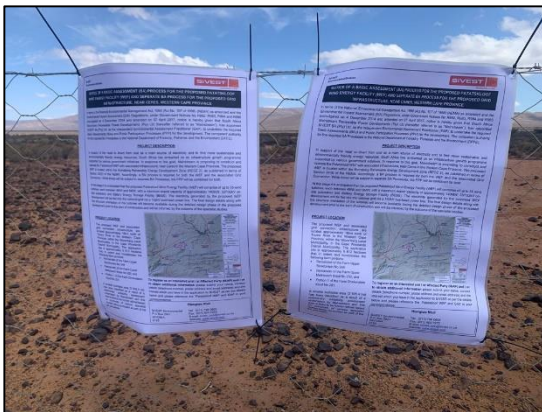
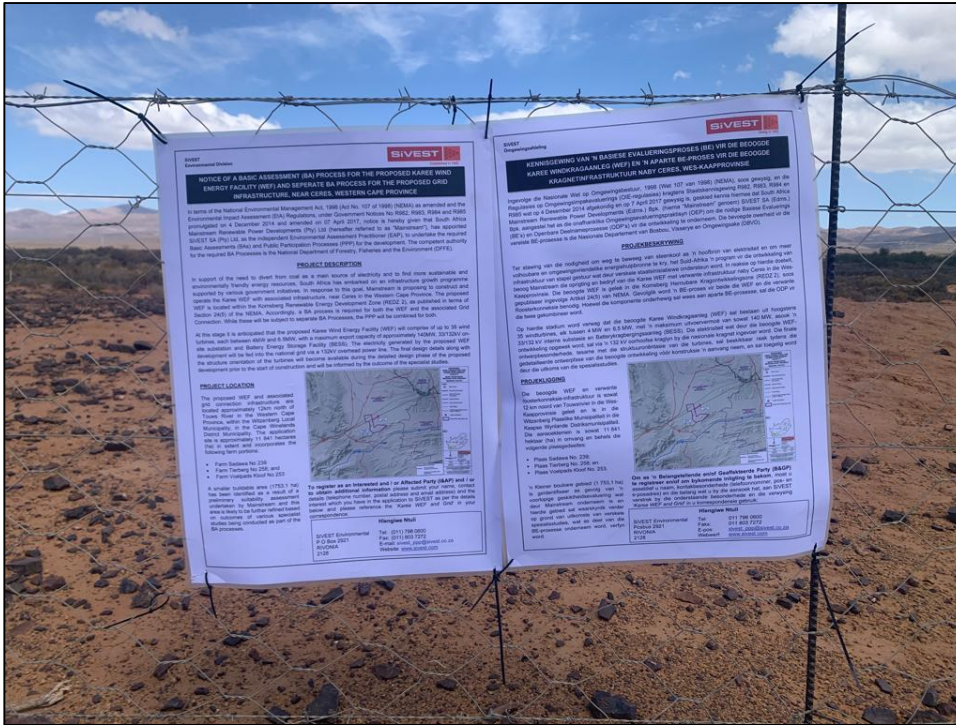


Established 1952

Karee WEF and Grid Site Notice Proof

Location: Karee 1

Coordinates: 33°10'24.4"S; 19°47'40.0"E



SiVEST SA (Pty) Ltd | Registration No. 2000/006717/07 t/a SiVEST

Part of the SiVEST Group | www.sivest.com

South Africa

Durban +27 31 581 1500
East London +27 43 721 2819
Johannesburg +27 11 798 0610
Pietermaritzburg +27 33 347 1600
Pretoria +27 11 798 0600
Richards Bay +27 35 789 2066

info@sivest.co.za

Mauritius

SiVEST Mauritius
Curepipe +230 670 4454
Daniel Wong Chung Co. Ltd
Curepipe +230 674 5727
www.dwcshivest.com

United Kingdom

MBM Consulting
London, England +44 0203 817 7691
Tunbridge Wells, England +44 1892 557 290
www.mbmconsult.com

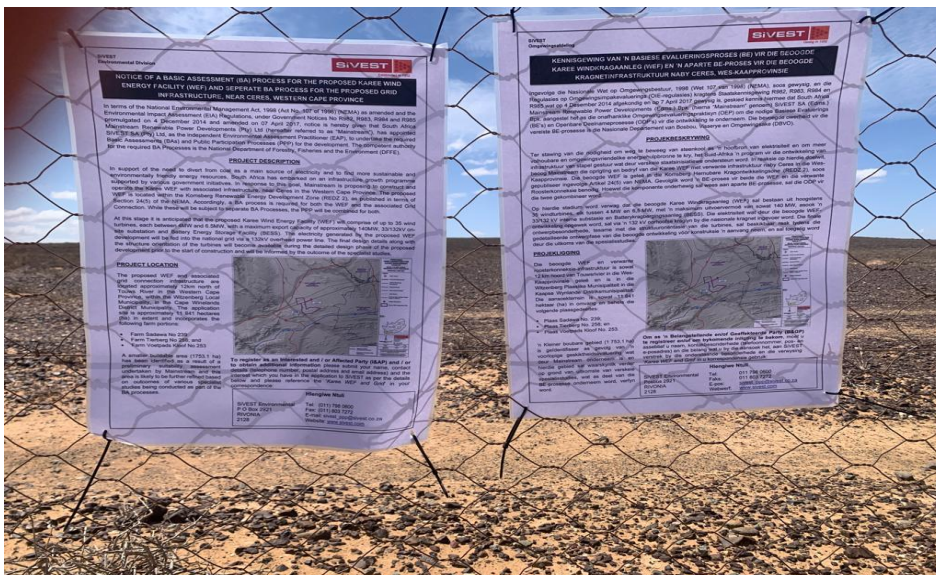


In South Africa and Mauritius



Location: Karee 2

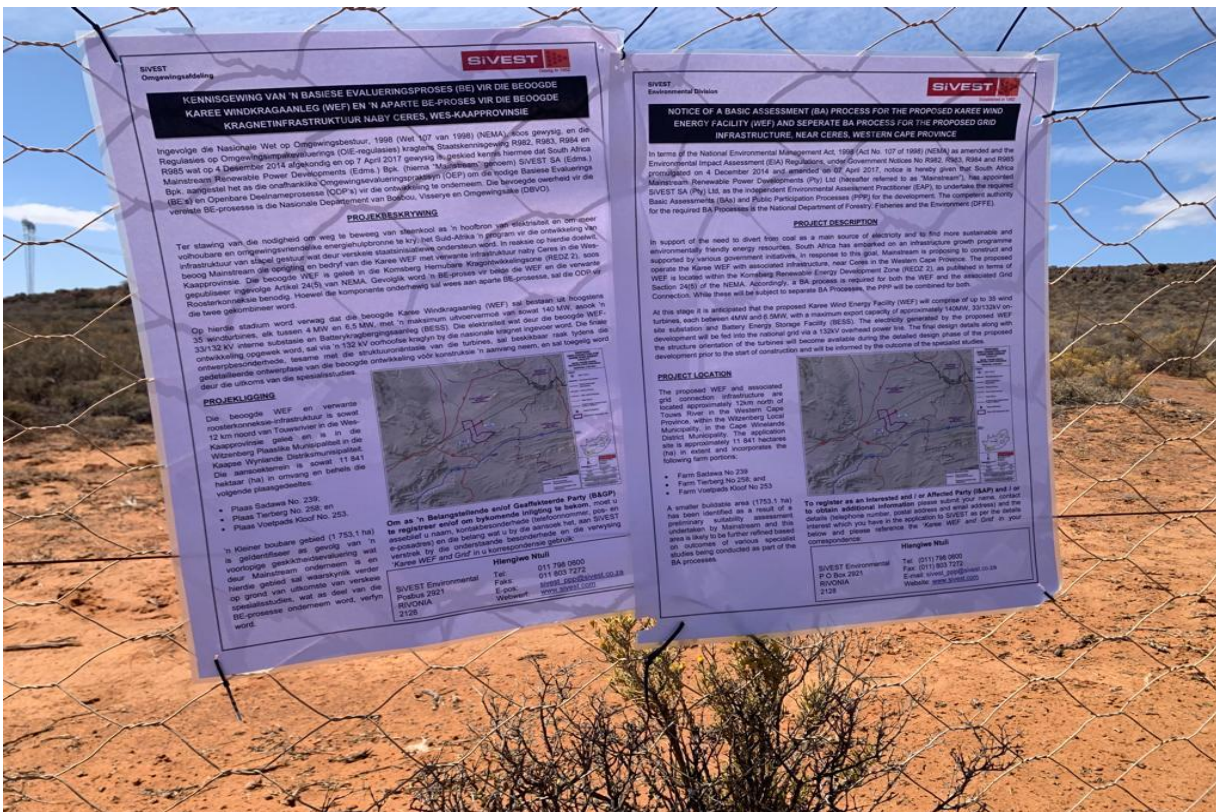
Coordinates: 33°09'21.0"S; 19°53'37.1"E





Location: Karee 3

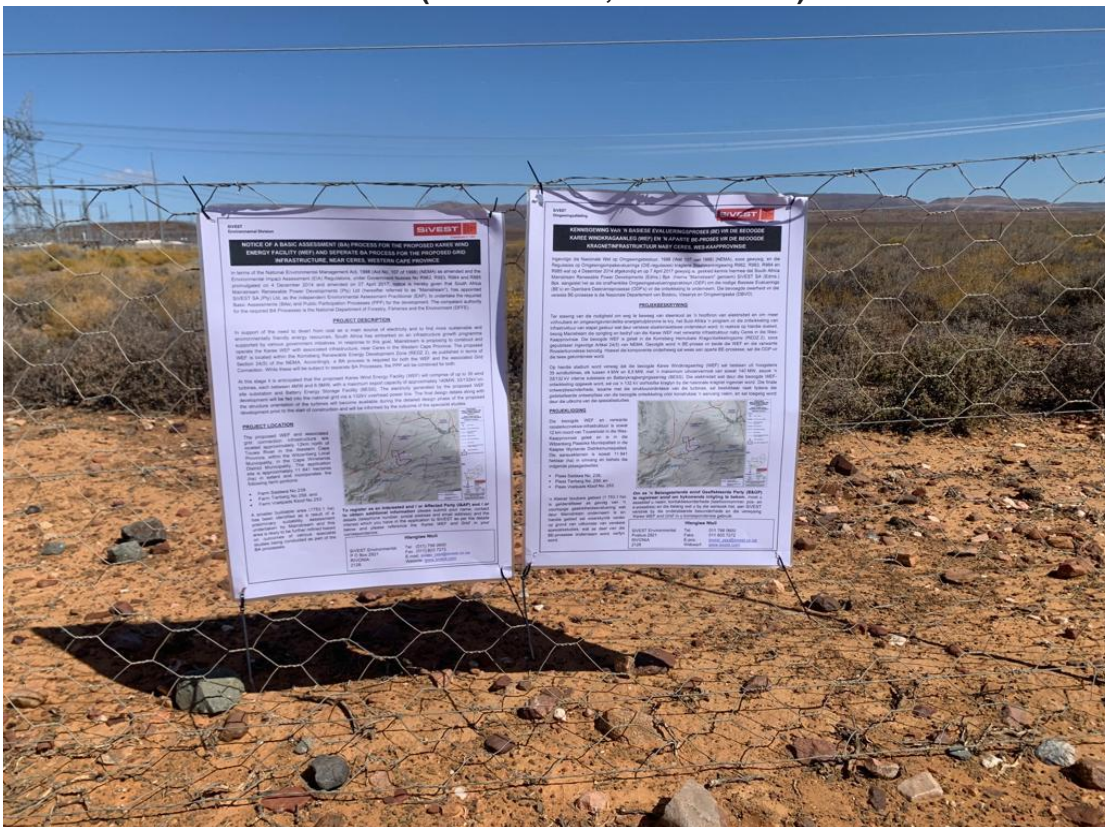
Coordinates: 33°08'23.1"S; 19°57'12.6"E

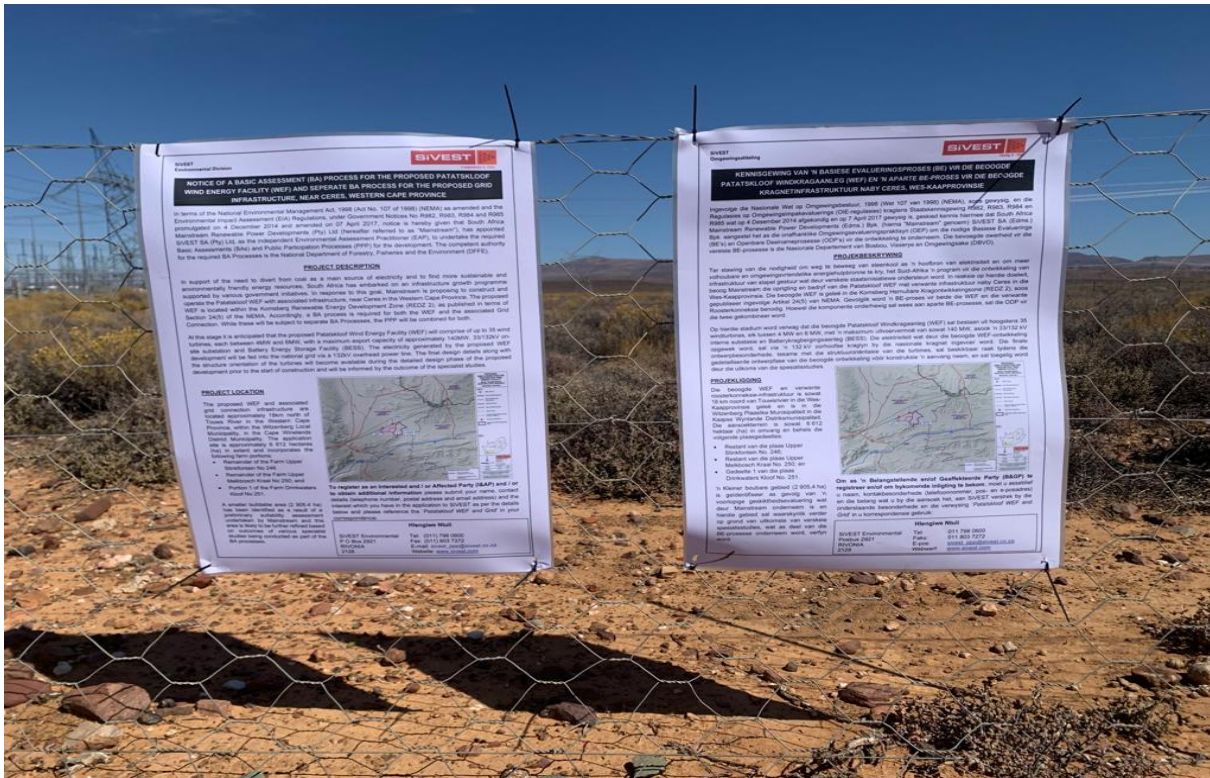




Location: Karee 4

Coordinates: Breede River DC (33°08'22.3"S; 19°57'12.4"E)

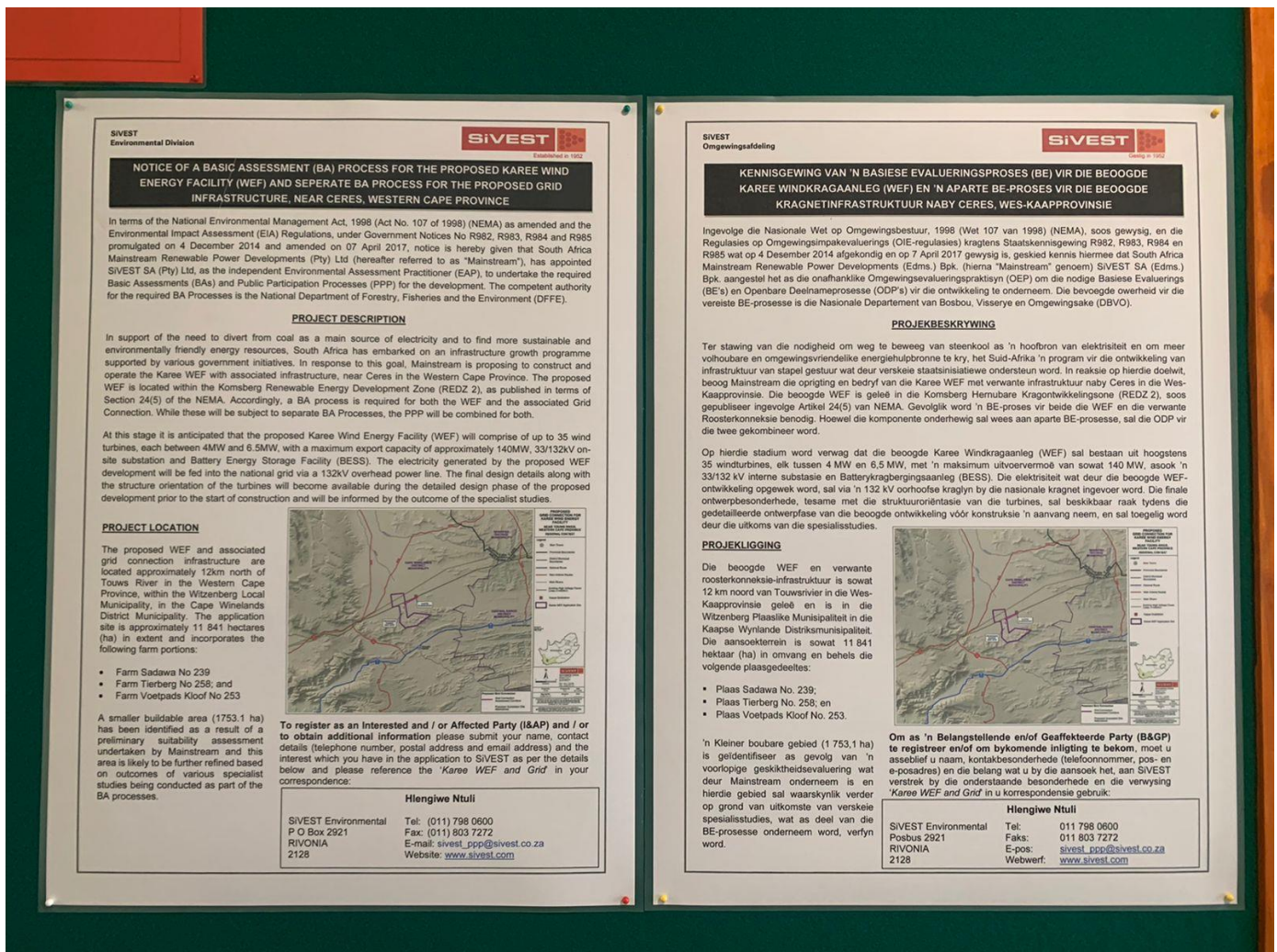


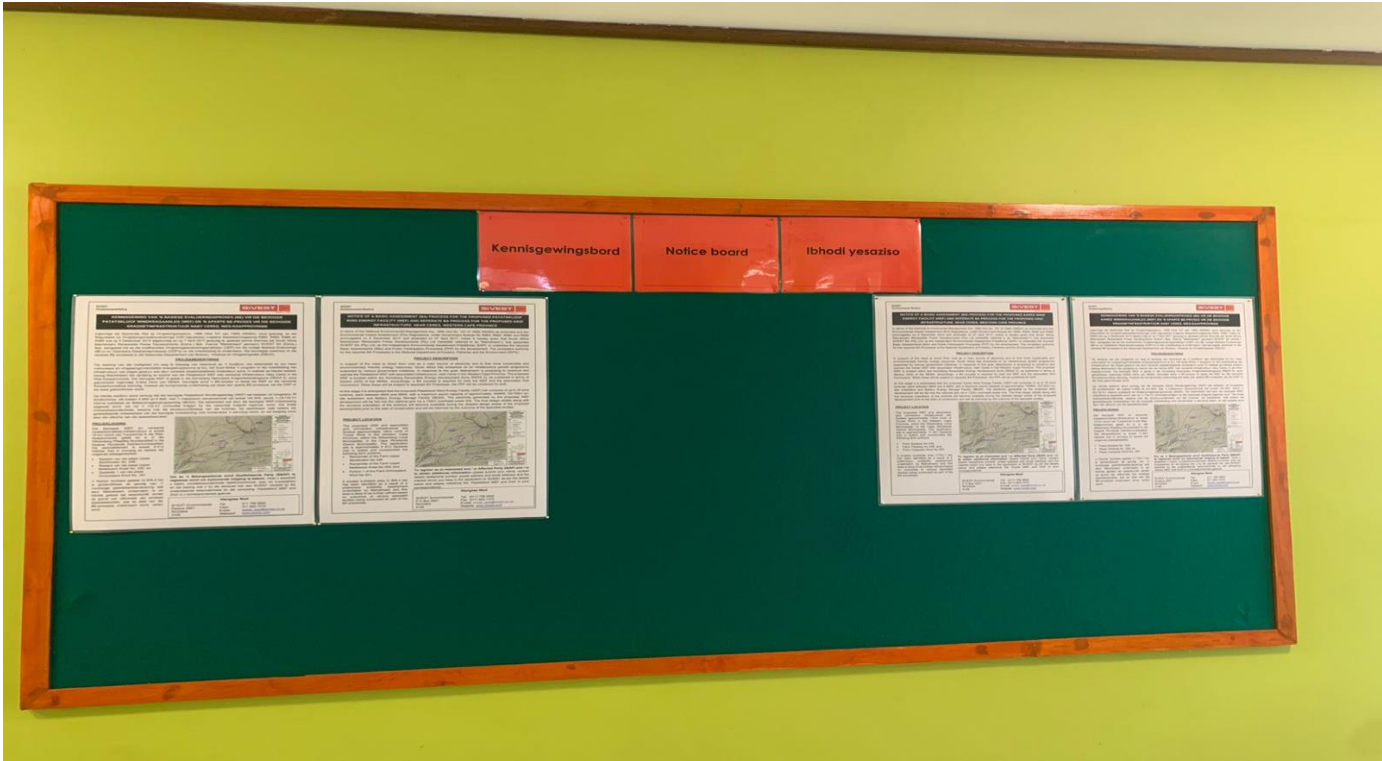


South Africa Mainstream Renewable Power (Pty) Ltd
 Proof of site notices
 05 December 2022

Location: John Steyn library

Coordinates: 33 Owen St, Ceres, 6835







BASIC ASSESSMENTS (BAs) FOR THE PROPOSED CONSTRUCTION AND OPERATION OF THE 250 MW PATATSKLOOF AND 200 MW KAREE WIND ENERGY FACILITIES (WEFs), BATTERY ENERGY STORAGE SYSTEM (BESS), GRID CONNECTION AND ASSOCIATED INFRASTRUCTURES LOCATED NEAR CERES IN THE WITZENBERG LOCAL MUNICIPALITY, CAPE WINELANDS DISTRICT, IN THE WESTERN CAPE PROVINCE OF SOUTH AFRICA

DISTRIBUTION OF THE DBAR TO ORGANS OF STATE FOR COMMENT

TITLE	SURNAME	NAME	POSITION	POSTAL ADDRESS	EMAIL ADDRESS
WITZENBERG LOCAL MUNICIPALITY					
Ms	Truter	Heloise	Manager; Environment & Amenities	PO Box 44 Ceres 6835	heloise@witzenberg.gov.za
Mr	Nasson	David	Municipal Manager	PO Box 44 Ceres 6835	david@witzenberg.gov.za
BREED VALLEY LOCAL MUNICIPALITY					
Mr	McThomas	D.	Municipal Manager	Private Bag X3046 Worcester 6849	mm@bvm.gov.za
CENTRAL KAROO DISTRICT MUNICIPALITY					
Mr	Jooste	Stefanus	Municipal Manager	Private Bag X582 BEAUFORT WEST 6970	manager@skdm.co.za
Mr	Van Zyl	Gerrit	Manager: Environmental Health Services	Private Bag X582 BEAUFORT WEST 6970	gerrit@skdm.co.za
DEPARTMENT OF ENVIRONMENTAL AFFAIRS: BIODIVERSITY SECTION					
Mr	Lekota	Seoka	Control Biodiversity officer Grade B	473 Steve Biko Road Arcadia PRETORIA 0083	slekota@environment.gov.za
Mr	Rabothata	Mmatlala		473 Steve Biko Road Arcadia PRETORIA 0083	mrabothata@environment.gov.za
WESTERN CAPE DEPARTMENT OF ENVIRONMENTAL AFFAIRS & DEVELOPMENT PLANNING					
Mr	Gerber	Gerhard	Director: Development Facilitation	Private Bag X9086 Cape Town 8000	Gerhard.Gerber@westerncape.gov.za
Mrs	La Meyer	Adri	Directorate: Development Facilitation	Private Bag X9086 Cape Town 8000	Adri.Lameyer@westerncape.gov.za
AGRIA SA					
Mr	Rabie	Janse		Muldersvlei Road ELSENBURG 7607	janse@agrisa.co.za
AIR TRAFFIC AND NAVIGATION SERVICES (ATNS)					
Ms	Mileng	Hassinah	Obstacle Evaluator	Private Bag X15 KEMPTON PARK 1620	obstacleevaluator@atns.co.za
Ms	Morobane	Johanna	Manager: Corporate Sustainability and Environment	Private Bag X15 KEMPTON PARK 1620	JohannaM@atns.co.za
BIRDLIFE SOUTH AFRICA					

BASIC ASSESSMENTS (BAs) FOR THE PROPOSED CONSTRUCTION AND OPERATION OF THE 250 MW PATATSKLOOF AND 200 MW KAREE WIND ENERGY FACILITIES (WEFs), BATTERY ENERGY STORAGE SYSTEM (BESS), GRID CONNECTION AND ASSOCIATED INFRASTRUCTURES LOCATED NEAR CERES IN THE WITZENBERG LOCAL MUNICIPALITY, CAPE WINELANDS DISTRICT, IN THE WESTERN CAPE PROVINCE OF SOUTH AFRICA

DISTRIBUTION OF THE DBAR TO ORGANS OF STATE FOR COMMENT

TITLE	SURNAME	NAME	POSITION	POSTAL ADDRESS	EMAIL ADDRESS
Ms	Lewis	Melissa	Policy Manager	Private Bag X16 PINEGOWRIE 2121	advocacy@birdlife.org.za
Ms	Ralston	Samantha		Private Bag X16 PINEGOWRIE 2121	energy@birdlife.org.za
BREEDE-GOURITZ CATCHMENT MANAGEMENT AGENCY (BGCMA)					
Ms	Mbunguka	Zama		P.O. Box 1205 George 6530	zmbunguka@bgcma.co.za
CAPE NATURE					
Ms	Simons	Megan	Land Use Advice	Private Bag X6546 GEORGE 6530	msimons@capenature.co.za
ENDANGERED WILDLIFE TRUST					
Mr	Little	Ian	Senior Manager	Kirstenbosch National Botanical Garden Rhodes Drive Newlands CAPE TOWN	ianl@ewt.org.za
ESKOM					
Mr	Geeringh	John	Chief Planner	PO Box 1091 JOHANNESBURG 2000	GeerinJH@eskom.co.za
DEPARTMENT OF WATER AND SANITATION					
Ms	Claassen	Marianne		Private Bag X16 Sanlamhof 7532	claassenm@dws.gov.za
Ms	Mokhoantle	Lerato	WQM	Private Bag X6101 KIMBERLEY 8300	MokhoantleL@dws.gov.za
DEPARTMENT OF MINERAL RESOURCES (DMR)					
National Department					
Mr	Msiza	David	The Director General	Private Bag X59 PRETORIA 0001	david.msiza@dmr.gov.za
WESTERN CAPE DEPARTMENT OF CULTURAL AFFAIRS & SPORT					
Ms	Peters	Ameerah	PA to CEO	Protea Assurance building Greenmarket Square CAPE TOWN 8001	ceoheritage@westerncape.gov.za
Ms	Heli	Vuyokazi	Heritage Resource Management	Protea Assurance building Greenmarket Square CAPE TOWN 8001	Vuyokazi.Heli@westerncape.gov.za HWC.HWC@westerncape.gov.za
WESTERN CAPE DEPARTMENT OF AGRICULTURE, LAND REFORM & RURAL DEVELOPMENT					
Mr	Herselman	P	Acting Land Use Manager	Private Bag X1 Elsenburg 7607	info@info@elsenburg.com

BASIC ASSESSMENTS (BAs) FOR THE PROPOSED CONSTRUCTION AND OPERATION OF THE 250 MW PATATSKLOOF AND 200 MW KAREE WIND ENERGY FACILITIES (WEFs), BATTERY ENERGY STORAGE SYSTEM (BESS), GRID CONNECTION AND ASSOCIATED INFRASTRUCTURES LOCATED NEAR CERES IN THE WITZENBERG LOCAL MUNICIPALITY, CAPE WINELANDS DISTRICT, IN THE WESTERN CAPE PROVINCE OF SOUTH AFRICA

DISTRIBUTION OF THE DBAR TO ORGANS OF STATE FOR COMMENT

TITLE	SURNAME	NAME	POSITION	POSTAL ADDRESS	EMAIL ADDRESS
DEPARTMENT OF AGRICULTURE, FORESTRY AND FISHERIES					
<i>Western Cape Department</i>					
Ms	van Rhyn	Petro	Head of Communication	Private Bag X1 Elsenburg 7607	petrovr@elsenburg.com
<i>National Department</i>					
Ms	Buthalezi	Thoko	Directorate Land-use & Soil Management	Private Bag X120 PRETORIA 0001	Thokob@nda.agric.za
Ms	Marubini	Mashudu	Assistant Director	Private Bag X120 PRETORIA 0001	mashuduma@daff.gov.za
WESTERN CAPE DEPARTMENT OF TRANSPORT AND PUBLIC WORKS					
Ms	Kiva	Wendy	Head of Department	Private Bag X9185 CAPE TOWN 8000	Wendy.Kiva@westerncape.gov.za
Mr	Manyathi	T		Private Bag X9185 CAPE TOWN 8000	Transport.Publicworks@westerncape.gov.za
SANRAL					
Ms	Abrahams	Nicole	Environmental Coordinator	Private Bag X19 BELLVILLE 7535	abrahamsn@nra.co.za
SAHRA: HEAD OFFICE					
Ms	Higgitt	Natasha	Heritage Officer: Northern Cape	PO Box 4637 CAPE TOWN 8000	nhiggitt@sahra.org.za
SQUARE KILOMETRE ARRAY					
Dr	Tiplady	Adriaan	Manager: Site Categorisation	PO Box 522 SAXONWOLD 2132	atiplady@ska.ac.za
SA CIVIL AVIATION AUTHORITY (SA CAA)					
Ms	Stoh	Lizell	Obstacle Specialist	Private Bag X73 HALFWAY HOUSE 1685	obstacles@caa.co.za strohl@caa.co.za
SENTECH					
Mr	De Villiers	Francois	Renewable Projects	Private Bag X06 Honeydew 2040	devilliersf@sentech.co.za
Mrs	Govender	Shanti	Commercial Specialist	Private Bag X06 Honeydew 2040	govenders@sentech.co.za
TRANSNET FREIGHT RAIL					
Mr	Seaton	Eddie		PO Box 72501 Parkview 2122	eddie.seaton@transnet.net eddie.seaton@gmail.com
TELKOM					

BASIC ASSESSMENTS (BAs) FOR THE PROPOSED CONSTRUCTION AND OPERATION OF THE 250 MW PATATSKLOOF AND 200 MW KAREE WIND ENERGY FACILITIES (WEFs), BATTERY ENERGY STORAGE SYSTEM (BESS), GRID CONNECTION AND ASSOCIATED INFRASTRUCTURES LOCATED NEAR CERES IN THE WITZENBERG LOCAL MUNICIPALITY, CAPE WINELANDS DISTRICT, IN THE WESTERN CAPE PROVINCE OF SOUTH AFRICA

DISTRIBUTION OF THE DBAR TO ORGANS OF STATE FOR COMMENT

TITLE	SURNAME	NAME	POSITION	POSTAL ADDRESS	EMAIL ADDRESS
Mr	Shaw	Leonard		Private Bag X20700 BLOEMFONTEIN 9300	leonardS@openserve.co.za
Ms	Peters	Ihlaam	Wayleave Officer	10 Jan Smuts Drive Pinelands CAPE TOWN 7404	ihlaamp@telkom.co.za IhlaamP@openserve.co.za
WESSA					
Mr	Griffiths	Morgan	Conservation Officer	PO Box 12444 Central Hill PORT ELIZABETH 6006	morgan.griffiths@wessa.co.za