

EZELSJACHT SOLAR ENERGY FACILITY CIVIL AVIATION COMPLIANCE STATEMENT

Prepared for: Mainstream Renewable Power Developments South
Africa (Pty) Ltd

Authority References: To be determined



SLR Project No.: 720.13101.00021
Report No.: 1
Revision No.: 1
November 2022

DOCUMENT INFORMATION

Title	Ezelsjacht Solar Energy Facility Civil Aviation Compliance Statement
Reg. EAP (EAPASA)	Stuart Heather-Clark
Keywords	Civil Aviation, Compliance Statement
Status	Final
Report no.	1
SLR company	SLR Consulting (South Africa) Pty Ltd

DOCUMENT REVISION RECORD

Rev no.	Issue date	Description	Issued by
1	11 November 2022	Ezelsjacht Solar Energy Facility Civil Aviation Compliance Statement	SLR Consulting South Africa (Pty) Ltd

REPORT SIGN OFF



Reg. EAP (EAPASA) (2019/613)

BASIS OF REPORT

This document has been prepared by an SLR Group company with reasonable skill, care and diligence, and taking account of the manpower, timescales and resources devoted to it by agreement with **Mainstream Renewable Power Developments South Africa (Pty) Ltd** (the Client) as part or all of the services it has been appointed by the Client to carry out. It is subject to the terms and conditions of that appointment.

SLR shall not be liable for the use of or reliance on any information, advice, recommendations and opinions in this document for any purpose by any person other than the Client. Reliance may be granted to a third party only in the event that SLR and the third party have executed a reliance agreement or collateral warranty.

Information reported herein may be based on the interpretation of public domain data collected by SLR, and/or information supplied by the Client and/or its other advisors and associates. These data have been accepted in good faith as being accurate and valid.

SLR disclaims any responsibility to the Client and others in respect of any matters outside the agreed scope of the work.

The copyright and intellectual property in all drawings, reports, specifications, bills of quantities, calculations and other information set out in this report remain vested in SLR unless the terms of appointment state otherwise.

This document may contain information of a specialised and/or highly technical nature and the Client is advised to seek clarification on any elements which may be unclear to it.

Information, advice, recommendations and opinions in this document should only be relied upon in the context of the whole document and any documents referenced explicitly herein and should then only be used within the context of the appointment.

CONTENTS

1. INTRODUCTION.....	1
2. SCREENING TOOL ASSESSMENT	2
3. SENSITIVITY VERIFICATION	3

LIST OF TABLES

TABLE 1-1: SUMMARY DETAILS FOR EZELSJACHT SEF	1
---	---

LIST OF FIGURES

FIGURE 1-1: REGIONAL SETTING MAP OF THE PROPOSED EZELSJACHT SEF.....	2
FIGURE 2-1: THE PROPOSED PROJECT IN RELATION TO THE CIVIL AVIATION SENSITIVITY MAP GENERATED BY THE DFFE NATIONAL SCREENING TOOL.....	3
FIGURE 2-2: THE PROPOSED PROJECT IN RELATION TO KNOWN CIVIL AVIATION INSTALLATIONS (ADAPTED FROM DATA DE DOORNS AIRFIELD - AEROPLANEZ SA).....	4

Ezelsjacht Solar Energy Facility Civil Aviation Compliance Statement

1. INTRODUCTION

South Africa Mainstream Renewable Power Developments (Pty) Ltd (“Mainstream”) is proposing the construction and operation of one (1) Solar photovoltaic (PV) Energy Facility (SEF), Battery Energy Storage System (BESS), and associated infrastructure with a generation capacity of up to 110 megawatts.

In order to evacuate the energy generated by the SEF to supplement the national grid, Mainstream is also proposing an electrical grid infrastructure/ grid connection project which will be assessed in a separate Basic Assessment Processes (i.e. EGI for SEF).

The proposed SEF site is located approximately 13 km south-east of the town De Doorns, within the Cape Winelands District Municipality of the Western Cape Province. The site proposed for the SEF component falls entirely within the Breede Valley Local Municipality (Figure 1-1).

Table 1-1: Summary Details for Ezelsjacht SEF

Applicant	Project Name	Capacity (MW)	Affected Property
South Africa Mainstream Renewable Power Developments (Pty) Ltd	Ezelsjacht Solar PV Energy Facility (SEF)	110 MW _{ac}	Portion 6 of the Farm Ratelbosch No. 149

The overall objective of the proposed development is to generate electricity by means of renewable energy technologies capturing solar energy to feed into the national grid.

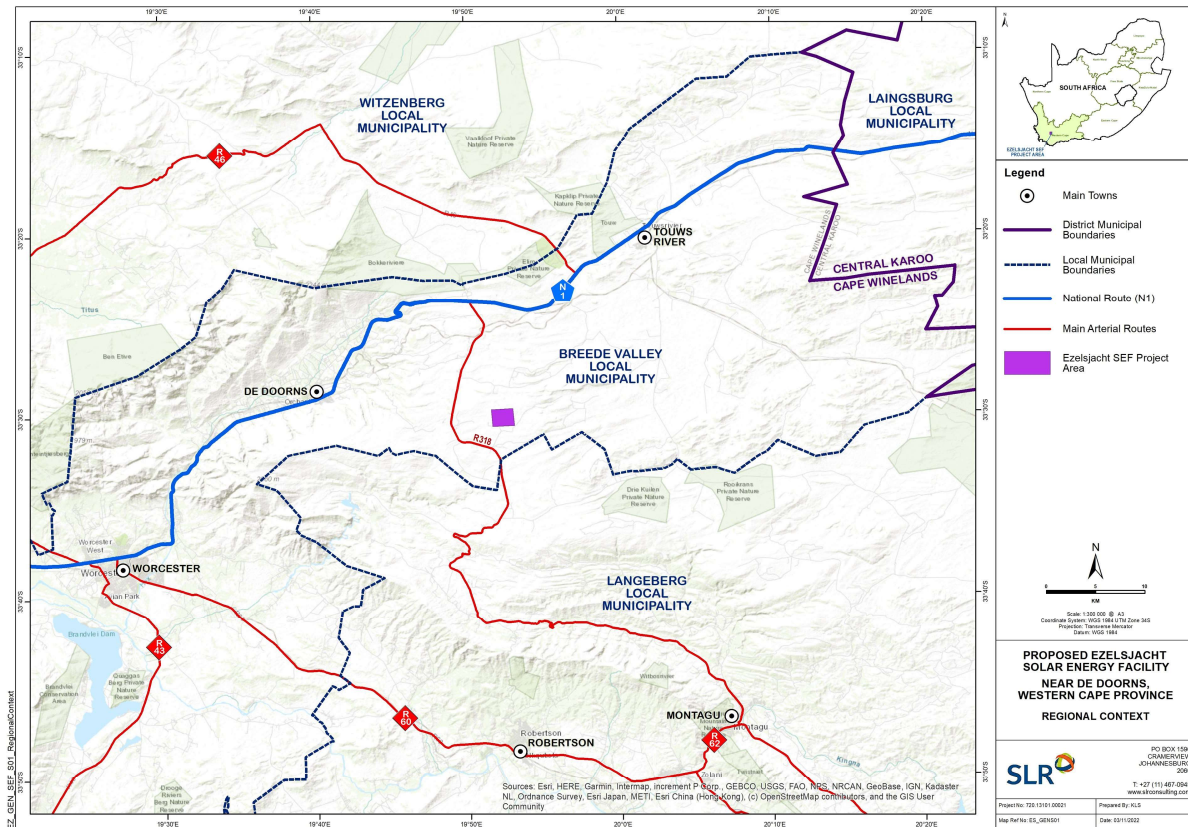


Figure 1-1: Regional Setting Map of the proposed Ezelsjacht SEF

2. SCREENING TOOL ASSESSMENT

According to the Screening Report generated using the Department of Forestry, Fisheries and the Environment (DFFE) national web based environmental screening tool, the project site is deemed to have a ‘medium’ sensitivity with respect to civil aviation installations (since it is within 8km of a civil aviation aerodrome). In accordance with the protocol for the specialist assessment and minimum report content requirements for environmental impacts on civil aviation installations (Government Notice No. R 320 of 20 March 2020), where a site is identified as having a *very high*, *high*, or *medium* sensitivity for the civil aviation theme, a Civil Aviation Compliance Statement must be compiled and submitted for consideration by the Competent Authority. Thus, this Civil Aviation Compliance Statement has been prepared for the proposed Ezelsjacht Solar Energy Facility (SEF).

In accordance with the protocol a map showing the proposed development footprint overlaid on the civil aviation sensitivity map generated by the screening tool is provided in Figure 2-1 below.

MAP OF RELATIVE CIVIL AVIATION (SOLAR PV) THEME SENSITIVITY

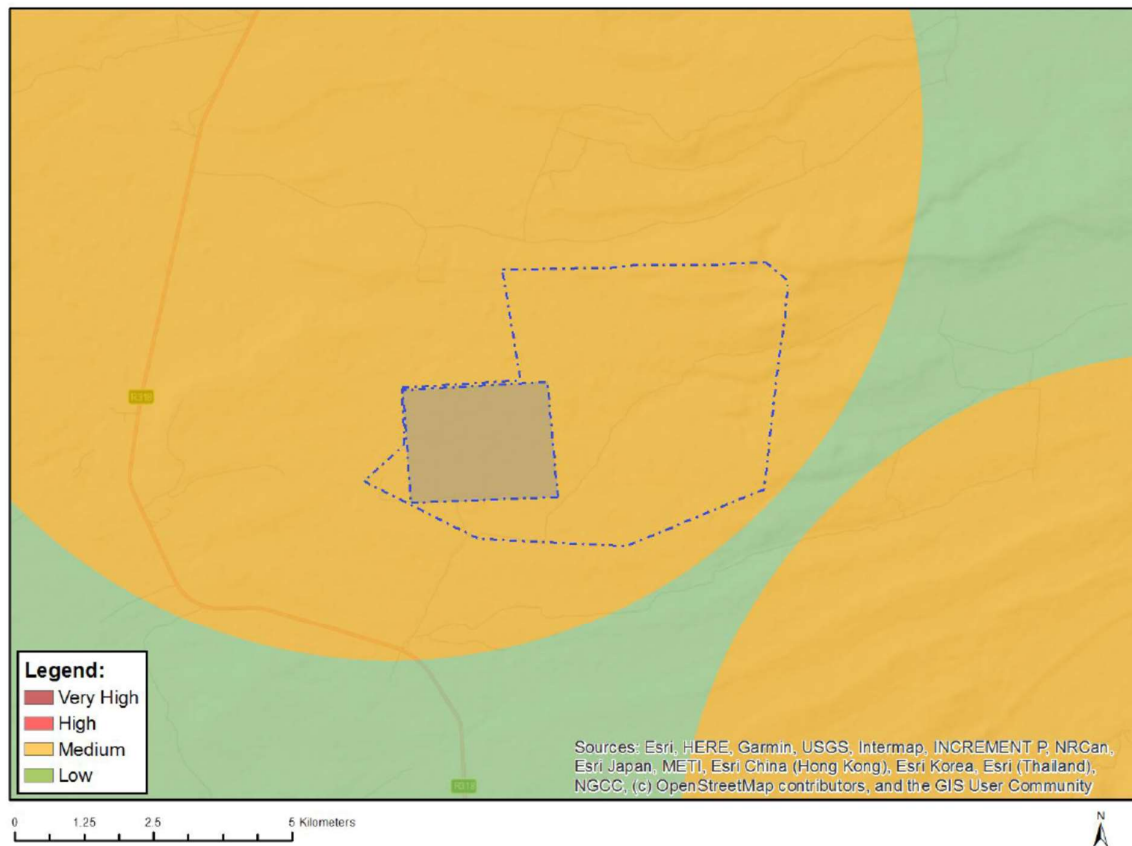


Figure 2-1: The proposed project in relation to the civil aviation sensitivity map generated by the DFFE national screening tool

3. SENSITIVITY VERIFICATION

This Site Sensitivity Verification considers the project site to have an overall sensitivity rating of 'low' rather than medium. The rationale for this is that the proposed project does not comprise structures above the level of existing transmission lines in the area (Figure 3-1). Input from ATNS and the SACAA is however required to either confirm this or indicate otherwise.

Other airfields located less than 50km from the site are as follows:

- Unamend Airstrip (+/- 8.7km);
- Ceres Airfield FACE (46km); and
- Robertson Airfield FARS (32km).

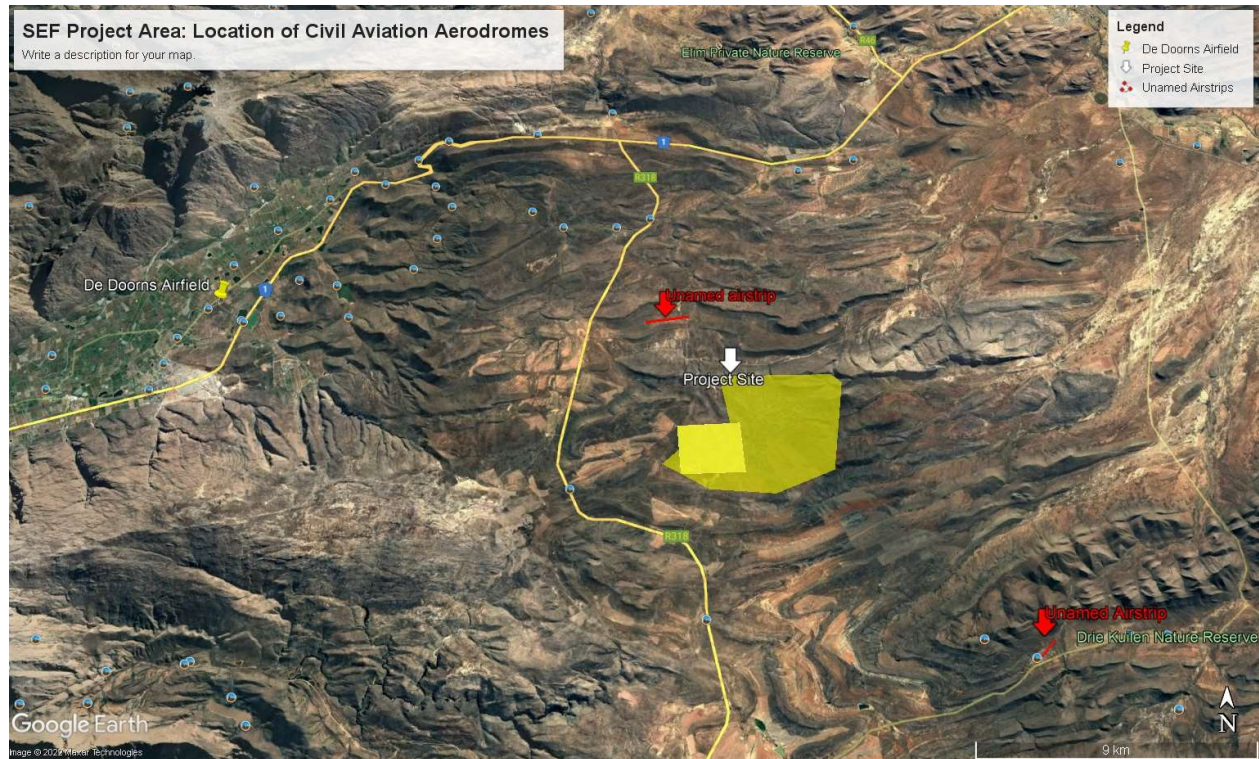


Figure 3-1: The proposed project in relation to known civil aviation installations (adapted from data De Doorns airfield - aeroplanez sa).

The South African Civil Aviation Authority (SACAA) and Navigation Services Company Limited (ATNS) has been identified as a key stakeholder on the project database and will be afforded an opportunity to provide comments of the Scoping Report during the 30-day review and comment period. The proposed development will not have an unacceptable negative impact on civil aviation installations. Should additional requirements be requested by SACAA, these will be addressed in the EIA phase of the project.

AFRICAN OFFICES

South Africa

CAPE TOWN

T: +27 21 461 1118

JOHANNESBURG

T: +27 11 467 0945

DURBAN

T: +27 11 467 0945

Ghana

ACCRA

T: +233 24 243 9716

Namibia

WINDHOEK

T: + 264 61 231 287