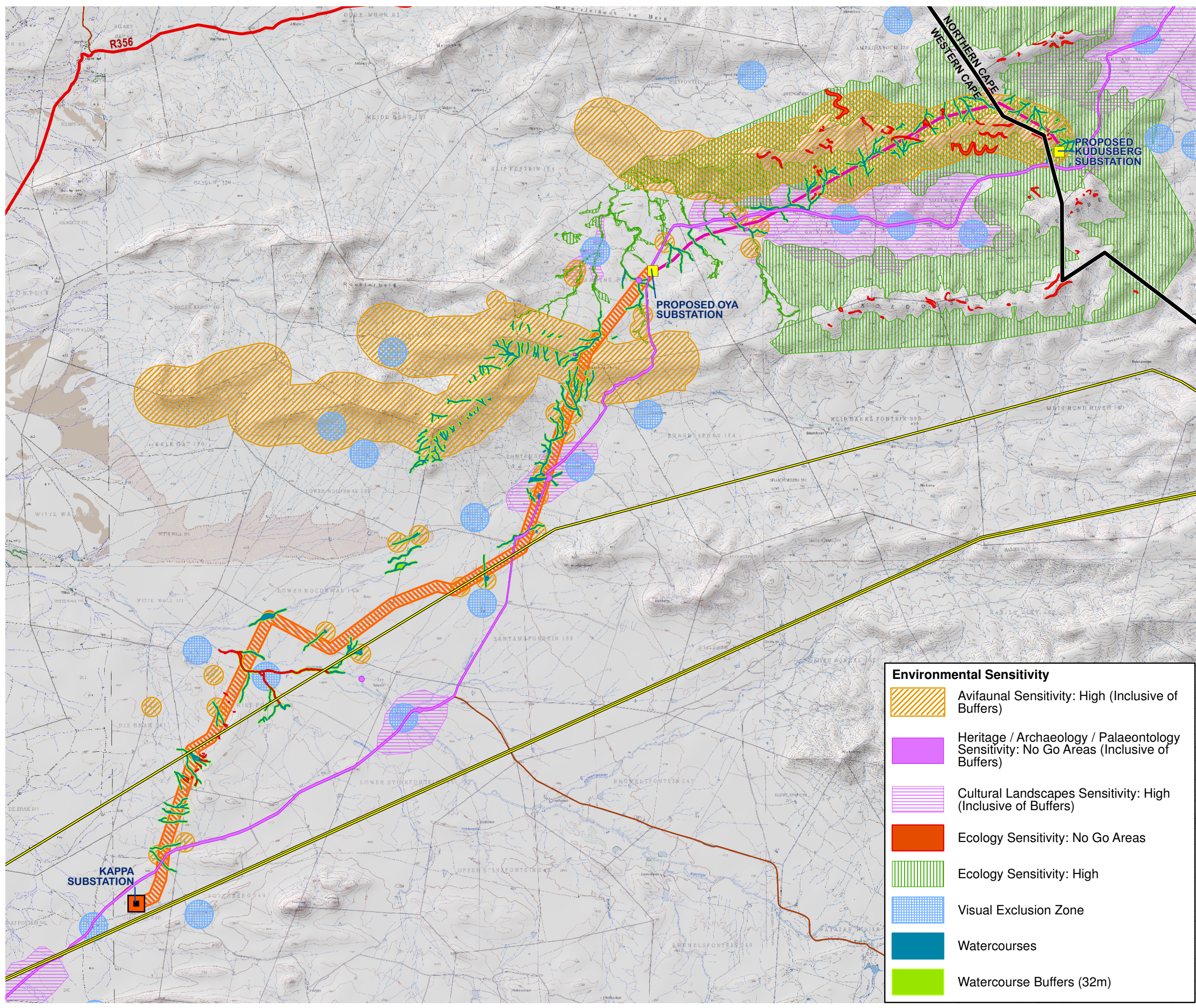


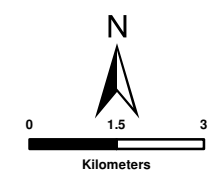
**PROPOSED  
CONSTRUCTION OF THE  
132kV OYA POWER LINE  
NEAR MATJIESFONTEIN,  
WESTERN AND NORTHERN  
CAPE PROVINCES  
PREFERRED ALTERNATIVES  
WITH SENSITIVITY OVERLAY**



- Legend**
- Provincial Boundaries
  - Main Roads
  - Secondary Roads
  - Existing High Voltage Power Lines (>=400kV)
  - Rivers
  - Existing Substation
  - Preferred Power Line Alternatives**
  - Kudusberg - Oya Corridor (31m)
  - Oya - Kappa: Corridor Option 4
  - Proposed Substation Sites

- Environmental Sensitivity**
- Avifaunal Sensitivity: High (Inclusive of Buffers)
  - Heritage / Archaeology / Palaeontology Sensitivity: No Go Areas (Inclusive of Buffers)
  - Cultural Landscapes Sensitivity: High (Inclusive of Buffers)
  - Ecology Sensitivity: No Go Areas
  - Ecology Sensitivity: High
  - Visual Exclusion Zone
  - Watercourses
  - Watercourse Buffers (32m)

SOURCE:  
DEMARCATION BOARD, 2016  
ESKOM, 2012  
NGI, 2014



**SIVEST**  
ENVIRONMENTAL DIVISION  
12 AUTUMN ROAD  
RIVONIA, 2128  
JOHANNESBURG  
SOUTH AFRICA  
Phone: +27 11 798 0600  
Fax: +27 11 803 7272  
e-mail: info@sivest.co.za

Project No 16235	Prepared By KLS	Date 13/11/2020
Map Ref No 16235/G11	Revision 0	Date

"COPYRIGHT IS VESTED IN SIVEST IN TERMS OF THE COPYRIGHT ACT (ACT 98 OF 1978) AND NO USE OR REPRODUCTION OR DUPLICATION THEREOF MAY OCCUR WITHOUT THE WRITTEN CONSENT OF THE AUTHOR"

THIS MAP HAS BEEN PREPARED UNDER THE CONTROLS ESTABLISHED BY THE SIVEST QUALITY MANAGEMENT SYSTEM WHICH HAS BEEN CERTIFIED ISO 9001:2015 COMPLIANT