

**Proposed Grid Connection**

- Kudusberg - Oya Corridor (31m)
- Oya - Kappa: Corridor Option 1
- Oya - Kappa: Corridor Option 2
- Oya - Kappa: Corridor Option 3
- Oya - Kappa: Corridor Option 4
- Oya - Kappa: Corridor Option 5
- Proposed Substation Sites

**PROPOSED CONSTRUCTION OF THE 132kV OYA POWER LINE NEAR MATJIESFONTEIN, WESTERN AND NORTHERN CAPE PROVINCES**

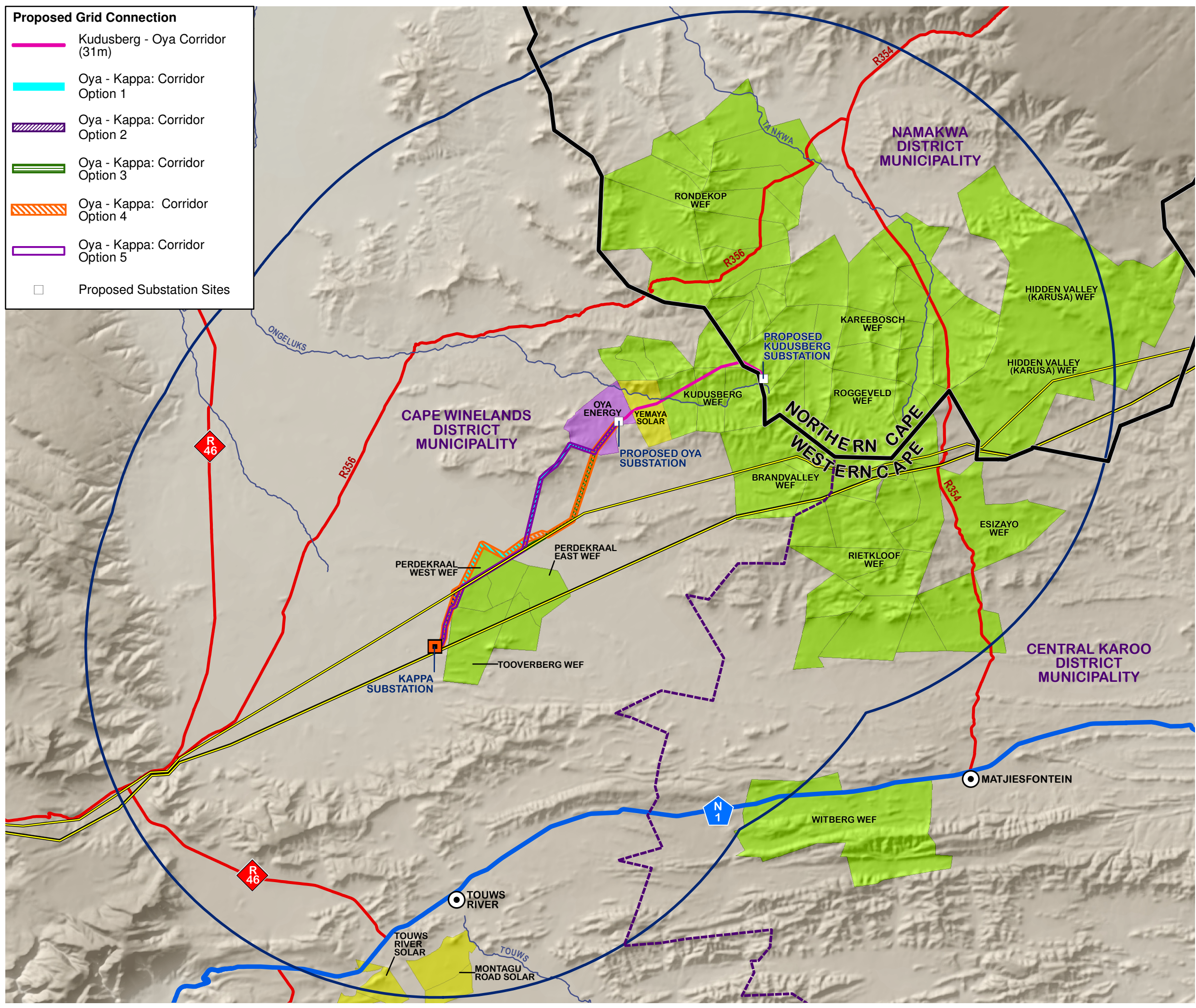
**RENEWABLE ENERGY PROJECTS WITHIN 35KM RADIUS (EXISTING AND PROPOSED)**

**Legend**

- Main Towns
- Provincial Boundaries
- District Municipal Boundaries
- Main Roads
- Main Rivers
- Existing High Voltage Power Lines (>=400kV)
- Existing Substation

**Renewable Energy Application Sites**

- Onshore Wind
- Solar
- Solar / Fuel-Based



SOURCE:  
DEFF, 2020  
MUNICIPAL DEMARCATION BOARD, 2016  
NFEPA, 2011  
NGI, 2014

**ENVIRONMENTAL DIVISION**  
51 WESSELS ROAD  
RIVONIA, 2128  
JOHANNESBURG  
SOUTH AFRICA

Phone: +27 11 798 0600  
Fax: +27 11 803 7272  
e-mail: info@sivest.co.za

Project No 16235	Prepared By KLS	Date 16/10/2020
Map Ref No 16235/G_08	Revision 0	Date

"COPYRIGHT IS VESTED IN SIVEST IN TERMS OF THE COPYRIGHT ACT (ACT 98 OF 1978) AND NO USE OR REPRODUCTION OR DUPLICATION THEREOF MAY OCCUR WITHOUT THE WRITTEN CONSENT OF THE AUTHOR"

THIS MAP HAS BEEN PREPARED UNDER THE CONTROLS ESTABLISHED BY THE SIVEST QUALITY MANAGEMENT SYSTEM WHICH HAS BEEN CERTIFIED ISO 9001:2008 COMPLIANT