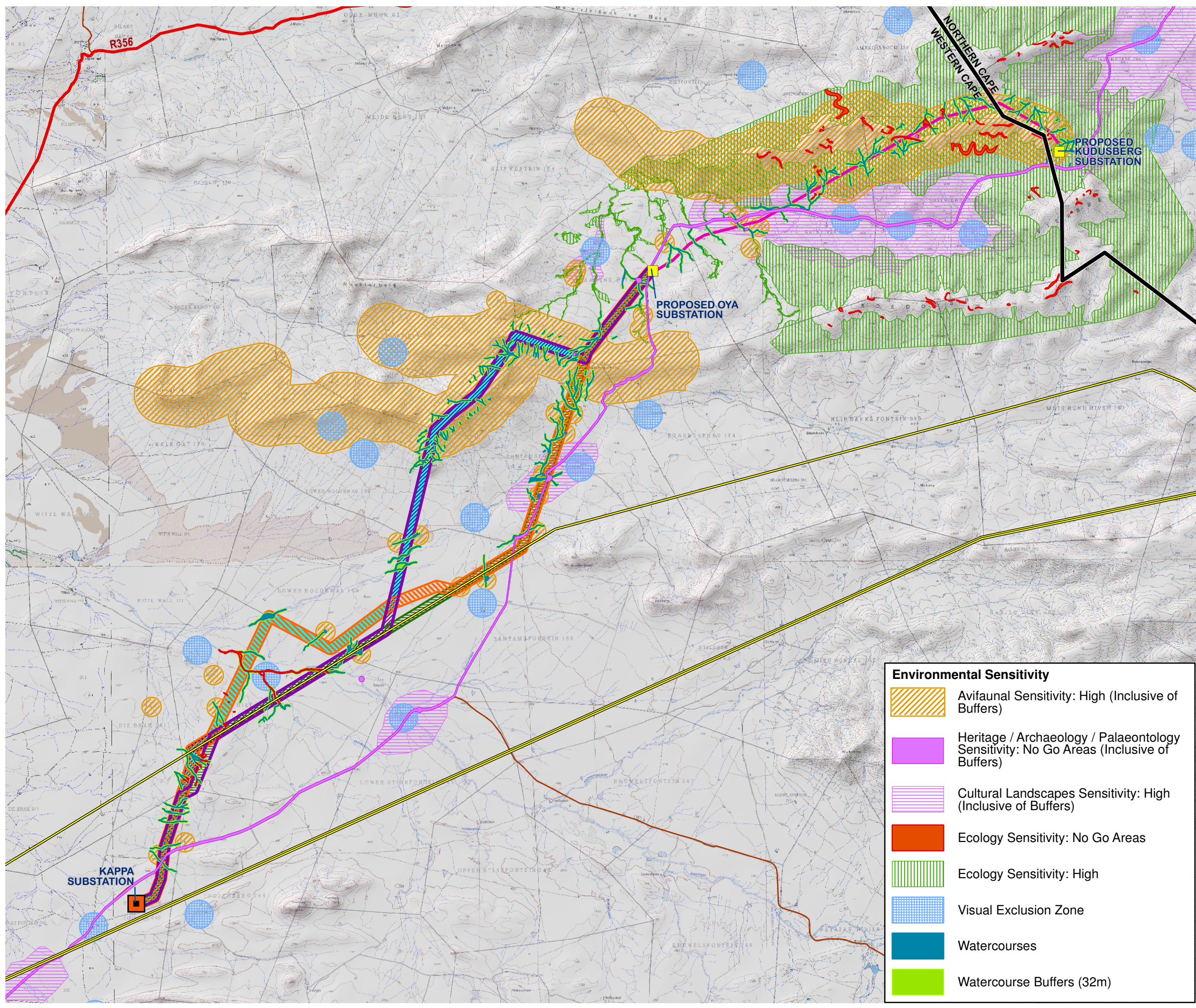


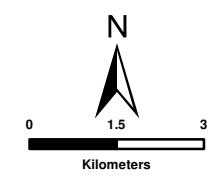
PROPOSED CONSTRUCTION OF THE 132kV OYA POWER LINE NEAR MATJIESFONTEIN, WESTERN AND NORTHERN CAPE PROVINCES PRELIMINARY SENSITIVITY OVERLAY



- Legend**
- Provincial Boundaries
 - Main Roads
 - Secondary Roads
 - Existing High Voltage Power Lines ($\geq 400kV$)
 - Rivers
 - Existing Substation
- Proposed Grid Connection**
- Kudusberg - Oya Corridor (31m)
 - Oya - Kappa: Corridor Option 1
 - Oya - Kappa: Corridor Option 2
 - Oya - Kappa: Corridor Option 3
 - Oya - Kappa: Corridor Option 4
 - Oya - Kappa: Corridor Option 5
 - Proposed Substation Sites

- Environmental Sensitivity**
- Avifaunal Sensitivity: High (Inclusive of Buffers)
 - Heritage / Archaeology / Palaeontology Sensitivity: No Go Areas (Inclusive of Buffers)
 - Cultural Landscapes Sensitivity: High (Inclusive of Buffers)
 - Ecology Sensitivity: No Go Areas
 - Ecology Sensitivity: High
 - Visual Exclusion Zone
 - Watercourses
 - Watercourse Buffers (32m)

SOURCE:
DEMARCATION BOARD, 2016
ESKOM, 2012
NGI, 2014



SIVEST

ENVIRONMENTAL DIVISION
12 AUTUMN ROAD
RIVONIA, 2128
JOHANNESBURG
SOUTH AFRICA

Phone: +27 11 798 0600
Fax: +27 11 803 7272
e-mail: info@sivest.co.za

Project No 16235	Prepared By KLS	Date 13/11/2020
Map Ref No 16235/G09	Revision 0	Date

"COPYRIGHT IS VESTED IN SIVEST IN TERMS OF THE COPYRIGHT ACT (ACT 98 OF 1978) AND NO USE OR REPRODUCTION OR DUPLICATION THEREOF MAY OCCUR WITHOUT THE WRITTEN CONSENT OF THE AUTHOR"

THIS MAP HAS BEEN PREPARED UNDER THE CONTROLS ESTABLISHED BY THE SIVEST QUALITY MANAGEMENT SYSTEM WHICH HAS BEEN CERTIFIED ISO 9001:2015 COMPLIANT