

Palaeontological specialist assessment: desktop study**REZONING AND SUBDIVISION OF FARM UITKOMS NO. 462,
PORTION 1, KATHU, GAMAGARA MUNICIPALITY, NORTHERN
CAPE PROVINCE**

John E. Almond PhD (Cantab.)
Natura Viva cc, PO Box 12410 Mill Street,
Cape Town 8010, RSA
naturaviva@universe.co.za

April 2015

EXECUTIVE SUMMARY

It is proposed to rezone and subdivide the farm Uitkoms No. 462, Portion 1, situated on the north-eastern outskirts of Kathu, Kuruman RD, Northern Cape. The land portion has a total area of 112 ha and will be rezoned from Agricultural Zone I and Special Zone (Mining Area) in order to develop part of the property for residential use.

According to geological maps, satellite images and recent palaeontological assessments in the Kathu area (e.g. Almond 2013a, 2014), the flat-lying Uitkoms housing study area is underlain by a considerable thickness of Plio-Pleistocene to Recent sediments of the Kalahari Group. The underlying Precambrian bedrocks – viz. dolomites, cherts and iron formations of the Transvaal Supergroup – are too deeply buried to be directly affected by the proposed development. The Kalahari Group succession near Kathu mainly comprises well-developed calcretes or surface limestones (Mokolanen Formation) that may total 30 m or more in thickness in the region, together with a thin (probably < 1 m) surface veneer of aeolian sands (Gordonia Formation), alluvial deposits and sparse near-surface gravels. In general the Kalahari Group calcretes and sands are of low palaeontological sensitivity, mainly featuring widely-occurring plant and animal trace fossils (e.g. invertebrate burrows, plant root casts). Recent palaeontological field assessments in the Sishen – Hotazel region by the author have not recorded significant fossil material within these near-surface Kalahari sediments. A very important fossil assemblage of Pleistocene to Holocene mammal remains - predominantly teeth with scarce bone material associated with Earlier, Middle and Later Stone Age artefacts, well-preserved peats and pollens - is recorded from unconsolidated doline (solution hollow) sediments at the well-known Kathu Pan site, located some 5.5 km northwest of Kathu. There are at present no obvious indications of comparable fossiliferous, tool-bearing solution hollow infills exposed at present within the study area but such sediments might conceivably be present but hidden beneath cover sands and calcretes along the Vlermuisleegte drainage line that runs along the north-eastern edge of the present study

area. However, according to the proposed layout for the Uitkoms housing development, this potentially sensitive zone is unlikely to be directly impacted by the proposed development.

The overall impact significance of the proposed Uitkoms housing development is therefore rated as LOW as far as palaeontological heritage is concerned. Likewise, cumulative impacts are likely to be of LOW significance, given the scarcity of important fossils (especially vertebrate remains) within the sedimentary rock units concerned as well as the huge outcrop area of the Kalahari Group as a whole. The degree of confidence for this assessment is rated as medium because of the uncertainty surrounding the presence or absence of potentially fossiliferous buried doline infill deposits within the study area.

Due to the inferred low impact significance of the proposed housing development, as far as fossil heritage resources are concerned, no further specialist palaeontological studies or monitoring are recommended at this stage.

The following mitigation measures to safeguard fossils exposed on site during the construction phase of the development are recommended:

- The ECO and / or the Site Engineer responsible for the development must remain aware that all sedimentary deposits have the potential to contain fossils and he / she should thus monitor all substantial excavations into sedimentary bedrock for fossil remains. This applies especially to excavations close to the Vlermuisleegte drainage line on the north-eastern edge of farm Uitkoms No. 462, Portion 1. If any substantial fossil remains (e.g. vertebrate bones, teeth, horn cores) are found during construction SAHRA should be notified immediately (Contact details: SAHRA, 111 Harrington Street, Cape Town. PO Box 4637, Cape Town 8000, South Africa. Phone: +27 (0)21 462 4502. Fax: +27 (0)21 462 4509. Web: www.sahra.org.za) so that appropriate mitigation (i.e. recording, sampling or collection) by a palaeontological specialist can be considered and implemented, at the developer's expense.
- A chance-find procedure should be implemented so that, in the event of fossils being uncovered, the ECO / Site Engineer will take the appropriate action, which includes:
 - Stopping work in the immediate vicinity and fencing off the area with tape to prevent further access;
 - Reporting the discovery to the provincial heritage agency and/or SAHRA;
 - Appointing a palaeontological specialist to inspect, record and (if warranted) sample or collect the fossil remains;
 - Implementing further mitigation measures proposed by the palaeontologist; and
 - Allowing work to resume only once clearance is given in writing by the relevant authorities.

If the mitigation measures outlined above are adhered to, the residual impact significance of any construction phase impacts on local palaeontological resources is considered to be low.

The mitigation measures proposed here should be incorporated into the Environmental Management Programme (EMPr) for the Uitkoms housing project. The palaeontologist concerned with mitigation work will need a valid collection permit from SAHRA. All work would have to conform to international best practice for palaeontological fieldwork and the study (e.g. data recording fossil collection and curation, final report) should adhere to the minimum standards for Phase 2 palaeontological studies recently published by SAHRA (2013).

1. INTRODUCTION

1.1. Project outline and brief

It is proposed to rezone and subdivide the farm Uitkoms No. 462, Portion 1, situated on the north-eastern outskirts of Kathu, Kuruman RD, Northern Cape (Figs. 1 & 2). The land portion has a total area of 112 ha and will be rezoned from Agricultural Zone I and Special Zone (Mining Area) in order to develop part of the property for residential use. The study area is bordered by the N14 trunk road to the east, and by Frikkie Meyer Street to the south, with access to the site from Frikkie Meyer Street. Approximately 163 Residential I erven will be developed, as well as one erf for Residential II use (Fig. 3). This will be in the form of sectional title blocks, which will be placed at random to accommodate and preserve the existing Camel Thorn trees on the development. The proposed activity will also include the construction of internal roads and associated services infrastructure. The property is largely undeveloped, with only the Kathu Equestrian Club on the property. The club will be incorporated within the layout and theme of the development.

The proposed development area is underlain by potentially fossiliferous sedimentary rocks of Late Caenozoic age (Sections 2 and 3). The construction phase of the development may entail substantial surface clearance as well as excavations into the superficial sediment cover (e.g. for building foundations, internal access roads, services). All these developments may adversely affect potential fossil heritage at or beneath the surface of the ground within the study area by destroying, disturbing or permanently sealing-in fossils that are then no longer available for scientific research or other public good.

All palaeontological heritage resources in the Republic of South Africa are protected by the National Heritage Resources Act (Act 25 of 1999) (See Section 1.2 below). Heritage resource management in the Northern Cape is the responsibility of the South African Heritage Resources Agency or SAHRA (Contact details: SAHRA, 111 Harrington Street, Cape Town. PO Box 4637, Cape Town 8000, South Africa. Phone: +27 (0)21 462 4502. Fax: +27 (0)21 462 4509. Web: www.sahra.org.za).

A desktop palaeontological heritage assessment for the Uitkoms housing project has been commissioned as part of a HIA for this development by EnviroAfrica cc (Contact details: Clinton Geyster, EnviroAfrica cc. P. O. Box 5367, Helderberg, 7135. 29 St James St, Somerset West. Tel. 021 851 1616. Email: clinton@enviroafrica.co.za).

1.2. Legislative context for palaeontological assessment studies

The various categories of heritage resources recognised as part of the National Estate in Section 3 of the National Heritage Resources Act (Act 25 of 1999) include, among others:

- geological sites of scientific or cultural importance;
- palaeontological sites;
- palaeontological objects and material, meteorites and rare geological specimens.

According to Section 35 of the National Heritage Resources Act, dealing with archaeology, palaeontology and meteorites:

(1) The protection of archaeological and palaeontological sites and material and meteorites is the responsibility of a provincial heritage resources authority.

(2) All archaeological objects, palaeontological material and meteorites are the property of the State.

(3) Any person who discovers archaeological or palaeontological objects or material or a meteorite in the course of development or agricultural activity must immediately report the find to the responsible heritage resources authority, or to the nearest local authority offices or museum, which must immediately notify such heritage resources authority.

(4) No person may, without a permit issued by the responsible heritage resources authority—

(a) destroy, damage, excavate, alter, deface or otherwise disturb any archaeological or palaeontological site or any meteorite;

(b) destroy, damage, excavate, remove from its original position, collect or own any archaeological or palaeontological material or object or any meteorite;

(c) trade in, sell for private gain, export or attempt to export from the Republic any category of archaeological or palaeontological material or object, or any meteorite; or

(d) bring onto or use at an archaeological or palaeontological site any excavation equipment or any equipment which assist in the detection or recovery of metals or archaeological and palaeontological material or objects, or use such equipment for the recovery of meteorites.

(5) When the responsible heritage resources authority has reasonable cause to believe that any activity or development which will destroy, damage or alter any archaeological or palaeontological site is under way, and where no application for a permit has been submitted and no heritage resources management procedure in terms of section 38 has been followed, it may—

(a) serve on the owner or occupier of the site or on the person undertaking such development an order for the development to cease immediately for such period as is specified in the order;

(b) carry out an investigation for the purpose of obtaining information on whether or not an archaeological or palaeontological site exists and whether mitigation is necessary;

(c) if mitigation is deemed by the heritage resources authority to be necessary, assist the person on whom the order has been served under paragraph (a) to apply for a permit as required in subsection (4); and

(d) recover the costs of such investigation from the owner or occupier of the land on which it is believed an archaeological or palaeontological site is located or from the person proposing to undertake the development if no application for a permit is received within two weeks of the order being served.

Minimum standards for the palaeontological component of heritage impact assessment reports (PIAs) have recently been published by SAHRA (2013).

1.3. Approach to the desktop palaeontological heritage study

The approach to this desktop palaeontological heritage study is briefly as follows. Fossil bearing rock units occurring within the broader study area are determined from geological maps and satellite images. Known fossil heritage in each rock unit is inventoried from scientific literature, previous assessments of the broader study region, and the author's field experience and palaeontological database (Table 1). Based on this data as well as field examination of representative exposures of all major sedimentary rock units present, the impact significance of the proposed development is assessed with recommendations for any further studies or mitigation.

In preparing a palaeontological desktop study the potentially fossiliferous rock units (groups, formations *etc.*) represented within the study area are determined from geological maps and satellite images. The known fossil heritage within each rock unit is inventoried from the published scientific literature, previous palaeontological impact studies in the same region, and the author's field experience (consultation with professional colleagues as well as examination of institutional fossil collections may play a role here, or later following field assessment during the compilation of the final report). This data is then used to assess the palaeontological sensitivity of each rock unit to a development (Provisional tabulations of palaeontological sensitivity of all formations in the Western, Eastern and Northern Cape have already been compiled by J. Almond and colleagues; *e.g.* Almond & Pether 2008).

The likely impact of the proposed development on local fossil heritage is then determined on the basis of (1) the palaeontological sensitivity of the rock units concerned, and (2) the nature and scale of the development itself, most significantly the extent of fresh bedrock excavation envisaged. When rock units of moderate to high palaeontological sensitivity are present within the development footprint, a Phase 1 field assessment study by a professional palaeontologist is usually warranted to identify any palaeontological hotspots and make specific recommendations for any mitigation required before or during the construction phase of the development.

On the basis of the desktop and Phase 1 field assessment studies, the likely impact of the proposed development on local fossil heritage and any need for specialist mitigation are then determined. Adverse palaeontological impacts normally occur during the construction rather than the operational or decommissioning phase. Phase 2 mitigation by a professional palaeontologist – normally involving the recording and sampling of fossil material and associated geological information (e.g. sedimentological data) may be required (a) in the pre-construction phase where important fossils are already exposed at or near the land surface and / or (b) during the construction phase when fresh fossiliferous bedrock has been exposed by excavations. To carry out mitigation, the palaeontologist involved will need to apply for a palaeontological collection permit from the relevant heritage management authority (e.g. SAHRA for the Northern Cape). It should be emphasized that, *provided that appropriate mitigation is carried out*, the majority of developments involving bedrock excavation can make a *positive* contribution to our understanding of local palaeontological heritage.

1.4. Assumptions & limitations

The accuracy and reliability of palaeontological specialist studies as components of heritage impact assessments are generally limited by the following constraints:

1. Inadequate database for fossil heritage for much of the RSA, given the large size of the country and the small number of professional palaeontologists carrying out fieldwork here. Most development study areas have never been surveyed by a palaeontologist.
2. Variable accuracy of geological maps which underpin these desktop studies. For large areas of terrain these maps are largely based on aerial photographs alone, without ground-truthing. The maps generally depict only significant (“mappable”) bedrock units as well as major areas of superficial “drift” deposits (alluvium, colluvium) but for most regions give little or no idea of the level of bedrock outcrop, depth of superficial cover (soil *etc.*), degree of bedrock weathering or levels of small-scale tectonic deformation, such as cleavage. All of these factors may have a major influence on the impact significance of a given development on fossil heritage and can only be reliably assessed in the field.
3. Inadequate sheet explanations for geological maps, with little or no attention paid to palaeontological issues in many cases, including poor locality information.
4. The extensive relevant palaeontological “grey literature” - in the form of unpublished university theses, impact studies and other reports (e.g. of commercial mining companies) - that is not readily available for desktop studies.

5. Absence of a comprehensive computerized database of fossil collections in major RSA institutions which can be consulted for impact studies. A Karoo fossil vertebrate database is now accessible for impact study work.

In the case of palaeontological desktop studies without supporting Phase 1 field assessments these limitations may variously lead to either:

- (a) *underestimation* of the palaeontological significance of a given study area due to ignorance of significant recorded or unrecorded fossils preserved there, or
- (b) *overestimation* of the palaeontological sensitivity of a study area, for example when originally rich fossil assemblages inferred from geological maps have in fact been destroyed by tectonism or weathering, or are buried beneath a thick mantle of unfossiliferous “drift” (soil, alluvium *etc.*).

Since most areas of the RSA have not been studied palaeontologically, a palaeontological desktop study usually entails *inferring* the presence of buried fossil heritage within the study area from relevant fossil data collected from similar or the same rock units elsewhere, sometimes at localities far away. Where substantial exposures of bedrocks or potentially fossiliferous superficial sediments are present in the study area, the reliability of a palaeontological impact assessment may be significantly enhanced through field assessment by a professional palaeontologist. In the present case, site visits to the various loop and borrow pit study areas in some cases considerably modified our understanding of the rock units (and hence potential fossil heritage) represented there.

In the case of the study area near Kathu a major limitation for fossil heritage studies is the low level of surface exposure of potentially fossiliferous bedrocks such as any doline infills within the near-surface calcrete hardpans, as well as the paucity of previous specialist palaeontological studies in the Northern Cape region as a whole.

1.5. Information sources

The information used in this desktop study was based on the following:

1. A short project outline kindly provided by EnviroAfrica cc, Somerset West;
2. A review of the relevant scientific literature, including published geological maps and accompanying sheet explanations as well as several desktop and field-based palaeontological assessment studies in the broader Sishen / Kathu / Hotazel region of the Northern Cape by the author (e.g. Almond 2012, 2013a, 2013b, 2014, 2015);
3. Examination of relevant topographical maps and satellite images;

4. The author's previous field experience with the formations concerned and their palaeontological heritage (See also review of Northern Cape fossil heritage by Almond & Pether 2008).

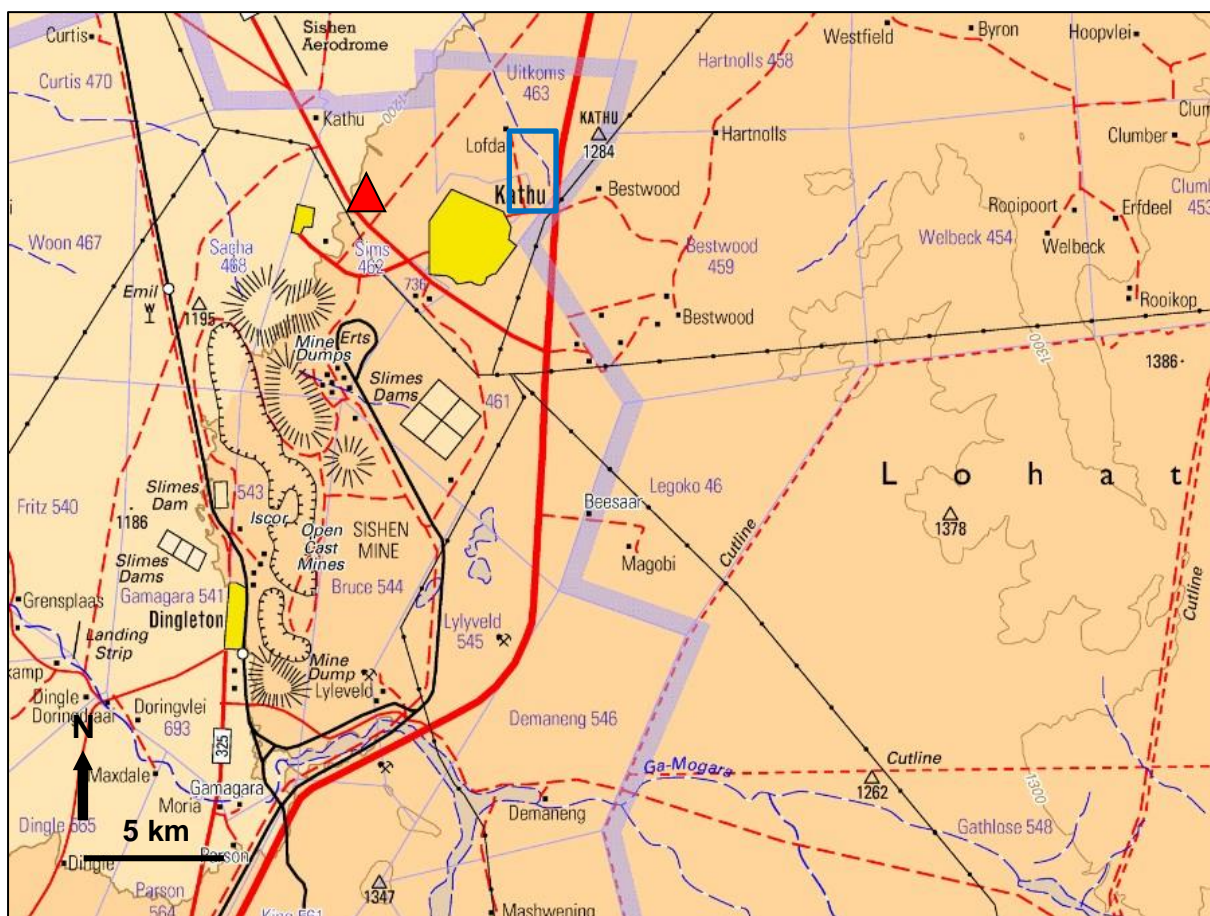


Fig. 1. Map showing the approximate location (blue rectangle) of the study area for the proposed Uitkoms housing development on farm Uitkoms No. 462, Portion 1, on the north-eastern outskirts of the town of Kathu, Northern Cape (Extract from 1: 250 000 topographical map 2722 Kuruman, Courtesy of the Chief Directorate Surveys and Mapping, Mowbray). See Figs. 2 & 3 for a more accurate outline of the study area. The red triangle indicates the important Kathu Pan Pleistocene fossil site c. 5.5 km NW of Kathu.



Fig. 2. Google earth© satellite image of the study area for the proposed Uitkoms housing development on the western side of the N14 and on the north-eastern outskirts of the town of Kathu, Northern Cape (yellow polygon). The prominent elongate grey area reflects near-surface calcretes along the Vlermuisleegte drainage line. This grey zone is of moderate palaeontological sensitivity.

2. GEOLOGICAL OUTLINE OF THE STUDY AREA

The town of Kathu lies within a semi-arid, flat-lying region at 1200 – 1300 m amsl situated between the Langberge mountain range in the west and the low-lying Kurumanheuwels in the east, Northern Cape. This region is drained by the Ga-Mogara River which flows northwards into the Kuruman River to the north of Hotazel. The study area for the proposed Uitkoms housing development lies within flat-lying Kalahari terrain at c. 1230-1240 m amsl on north-eastern outskirts of small town of Kathu, bounded on the west side by the N14 trunk road to Kuruman (Fig. 2). Satellite images show a largely open area with scattered thorn trees. The grey, unvegetated area along the north-eastern edge of the property reflects surface exposure of calcretes following the Vlermuisleegte drainage line which also features small pans further to the northwest. The ancient streambed is one of several palaeodrainage lines in the Kathu region belonging to the broader Ga-Mogara drainage system whose subparallel, NW to SE trending orientation presumably reflects underlying structural control (*cf* Almond 2013a, 2013b). Associated fluvial, doline (solution hollow) or pan deposits may be buried at shallow depths beneath younger surface sands here. Low hills of Precambrian banded ironstones (Asbestos Hills Subgroup, Ghaap Group) lie a few kilometres to the east. The Uitkoms project area lies just to the northwest of the Bestwood housing development that was the subject of a recent desktop palaeontological heritage assessment by the author (Almond 2014).

The geology of the study region is shown on the 1: 250 000 geological sheet 2722 Kuruman (Council for Geoscience, Pretoria) (Fig. 4 herein). This map is now out of print and is not accompanied by a detailed sheet explanation (A brief explanation is printed on the map itself, however). According to the map, the Uitkoms housing development study area is entirely mantled by Pleistocene to Recent aeolian sands of the **Gordonia Formation** and calcretes (surface limestones) of the **Mokolanen Formation (Kalahari Group)** that overlie Precambrian sedimentary bedrocks of the Transvaal Supergroup at depth. Other Kalahari Group superficial sediments are inferred to be present but not mapped at 1: 250 000 scale within the study area, such as surface gravels, alluvium and pan sediments associated with the Vlermuisleegte drainage line. Banded iron formations of the **Asbestos Hills Subgroup** (Ghaap Group) build the low hills just to the east but crop out outside the study area itself and are not treated further here. Borehole data from the Bestwood housing development project area to the southeast show subsurface dolomite overlain by banded iron formation (D. Morris, pers. comm., January 2013; Almond 2014). These Precambrian bedrocks are buried well beneath the ground surface and are unlikely to be directly impacted by the proposed housing development.

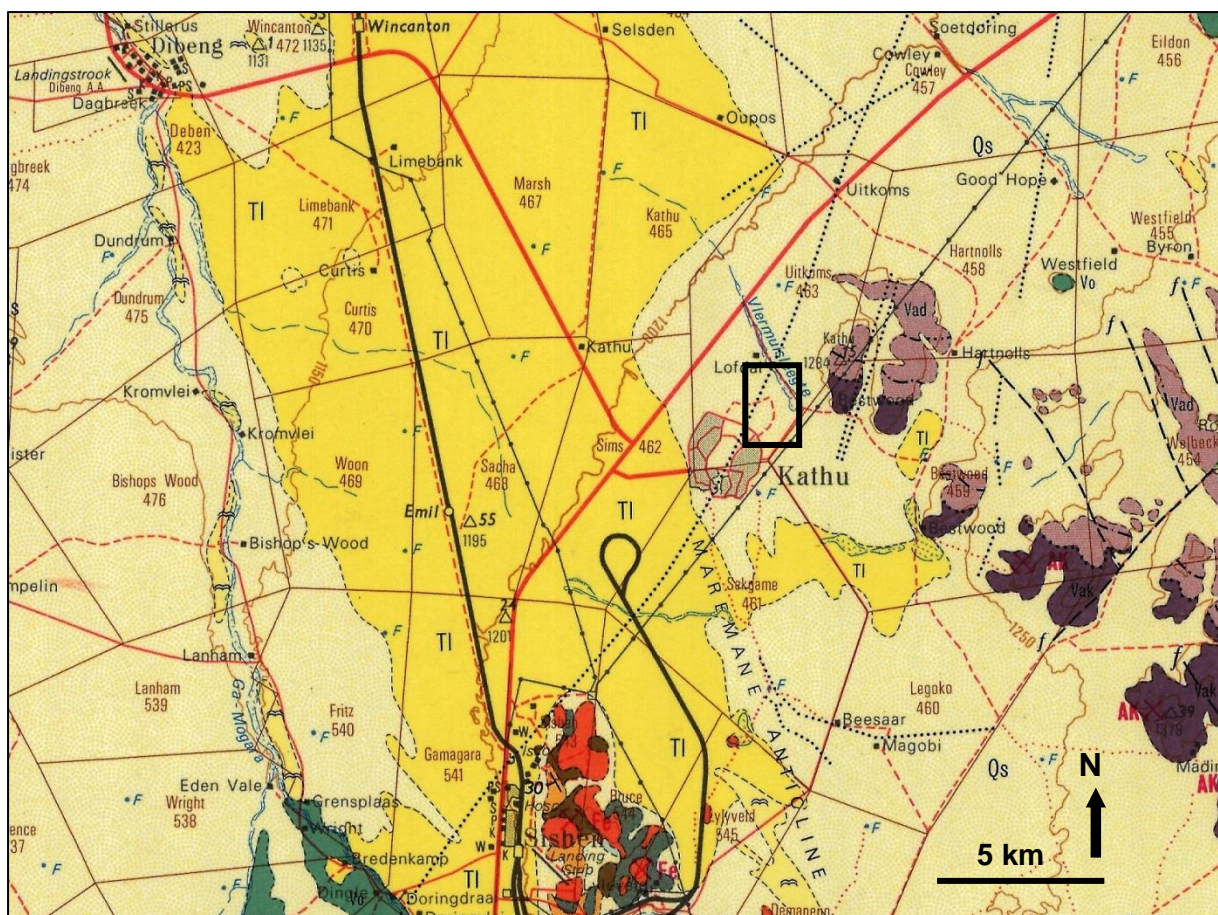


Fig. 4. Extract from 1: 250 000 geological map 2722 Kuruman (Council for Geoscience, Pretoria) showing the approximate location of the study area for the proposed Uitkoms housing development on farm Uitkoms No. 462, Portion 1, (black rectangle) on the north-eastern outskirts of Kathu. Note that the road and railway networks shown here are out of date. Geological units represented within the broader study region on sheet 2722 Kuruman include the following (*N.B.* many of these units are only represented subsurface within the study area itself):

CAENOZOIC SUPERFICIAL DEPOSITS (Quaternary to Recent)

- TI (dark yellow) – calcretes (“surface limestone”) of the Kalahari Group
- Qs (pale yellow) – aeolian sands of the Gordinia Formation, Kalahari Group
- Blue stippled areas = pans

TRANSVAAL SUPERGROUP (Late Archaean to Palaeoproterozoic)

- Vak (grey) – banded iron formation of the Kuruman Formation (Asbestos Hills Subgroup, Ghaap Group)
- Vad (lilac) – banded iron formation of the Daniëlskuil Formation (Asbestos Hills Subgroup, Ghaap Group)
- Black dotted line = unidentified linear feature (possibly a dolerite dyke).

The Campbell Rand carbonates in the Kathu region are entirely mantled by Late Caenozoic calcretes and aeolian sands of the **Kalahari Group** (TI for Tertiary Limestone in Fig. 4). The pedogenic limestones reflect seasonally arid climates in the region over the last five or so million years and are briefly described by Truter *et al.* (1938) and in more detail by Haddon (2005). The surface limestones may reach thicknesses of over 20-30 m, but are often much thinner, and are locally conglomeratic with clasts of reworked calcrete as well as exotic pebbles. The limestones may be secondarily

silicified and incorporate blocks of the underlying Precambrian carbonate rocks. The older, Pliocene - Pleistocene calcretes in the broader Kalahari region, including sandy limestones and calcretised conglomerates, have been assigned to the **Mokalanen Formation** of the **Kalahari Group** (See stratigraphic column in Fig. 5). They are possibly related in large part to a globally arid time period between 2.8 and 2.6 million years ago, *i.e.* late Pliocene (Partridge *et al.* 2006). Surface calcretes are not mapped at surface in the present study area but are seen in satellite images in the region of the Vlermuisleegte drainage line (Fig. 2).

Large areas of unconsolidated, reddish-brown aeolian (*i.e.* wind-blown) sands of the Quaternary **Gordonia Formation** (Kalahari Group; **Qs** in Fig. 4) are mapped in the Sishen - Kathu region, where their thickness is variable, including all of the present study area. The geology of the Late Cretaceous to Recent Kalahari Group is reviewed by Thomas (1981), Dingle *et al.* (1983), Thomas & Shaw 1991, Haddon (2000 & 2005) and Partridge *et al.* (2006). The Gordonia dune sands are considered to range in age from the Late Pliocene / Early Pleistocene to Recent, dated in part from enclosed Middle to Later Stone Age stone tools (Dingle *et al.*, 1983, p. 291). Note that the recent extension of the Pliocene - Pleistocene boundary from 1.8 Ma back to 2.588 Ma would place the Gordonia Formation almost entirely within the Pleistocene Epoch.

Haddon (2005) reports a total thickness of *about* 80 m of Kalahari Group sediments overlying the Precambrian bedrocks in the Sishen Iron Ore Mine, located a few kilometres southwest of the present study area. The lower-lying beds, which may be as old as Late Cretaceous (Partridge *et al.* 2006, p. 590) are assigned to the **Wessels Formation** (basal debris flow gravels associated with local faults) and **Budin Formation** (lacustrine calcareous clays with sparse suspended pebbles associated with palaeodrainage systems). The uppermost 15 m of the Kalahari succession here comprises well-indurated calcretised siltstones, pebbly horizons and clays with the development of solution hollows along joint surfaces within 10 m of the surface. Close to the surface calcretised silcretes showing *in situ* brecciation are also recognised. It is also noted that there is considerable, rapid horizontal variation in the Kalahari Group rocks, so it is unlikely that the succession underlying the present study area itself is identical.

Pale grey areas seen on satellite images of the study area (Fig. 2) indicate surface exposures of calcrete around pans and along water courses such as the Vlermuisleegte. Very thick (> 11 m), near-surface calcrete hardpans have been exposed by recent trenching in the Bestwood housing development area to the east of Kathu where the overlying Kalahari sands are generally less than a meter thick (Almond 2014). A recent field study associated with the manganese ore railway line (Sishen New Loop), to the southwest of the present study area, records a thick (> several meters) pale pinkish, karstified calcrete hardpan at surface that is partially mantled with a thin layer of downwasted surfaced gravels (*e.g.* calcrete rubble) and orange-brown Kalahari sands (Almond 2013a). Various calcrete facies are exposed in local stormwater trenches, including gravelly, pelleted, brecciated, silicified and honeycomb types. Several blocks contain well-defined, tubular to irregular

solution pipes lined with pale brown calcareous silt. Consolidated, poorly-sorted calcrete gravel breccia and reddish-brown sands partially infill some of these solution hollows, but no associated fossil bones or teeth were observed within them.

At Kathu Pan, located some 5.5 km NW of Kathu town (27° 39' 50" S, 23° 0' 30" E; see red triangle in Fig. 1), an important succession of stratified, unconsolidated, fossiliferous Quaternary to Holocene sediments up to 12 m thick infilling a series of solution hollows (sinkholes / dolines) within a thick calcrete hardpan has been studied in some detail (e.g. Butzer 1984, Klein 1988, Beaumont 1990, Partridge & Scott 2000, Beaumont 2004, and refs. therein). Porat *et al.* (2010) provide important recent data on the sedimentology and dating of the site. Boreholes within the pan area record a Kalahari Group succession here that is over 70 m thick, including 30 m of basal gravels, clays and sands (Wessels, Budin and possibly also Eden Formations) overlain by over 40 m of calcrete (Mokalanen Formation) and unconsolidated superficial sediments (e.g. Gordonian Formation aeolian sands). The various doline infill successions investigated at Kathu Pan comprise a variety of Mid to Late Pleistocene and Holocene sands, gravels, calcareous silty sands and a number of peat horizons. Several spring eyes can be identified. Apart from the sterile basal layers overlying the karstified calcrete surface, the sediments are associated with a series of stone artefact assemblages ranging from Early Acheulean through Fauresmith and Middle Stone Age to Later Stone Age.

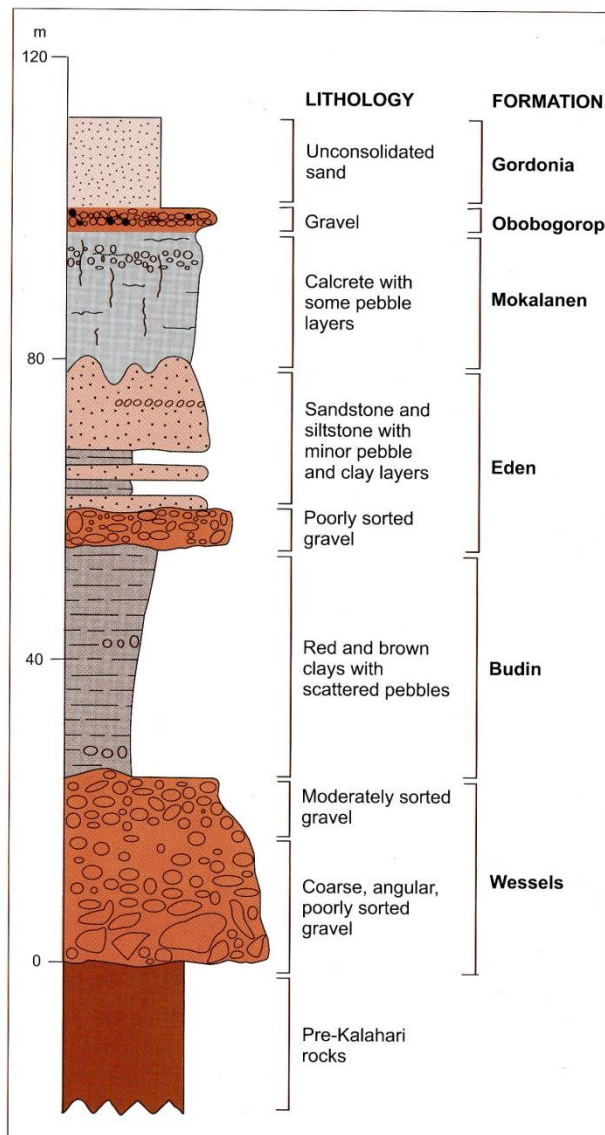


Fig. 5. Generalised stratigraphy of the Late Cretaceous to Recent Kalahari Group (From Partridge *et al.* 2006). Most or all of these rock units are represented within the Kathu – Sishen study region but only Plio-Pleistocene subsurface calcretes (Mokalanen Formation) and overlying Pleistocene to Recent aeolian sands of the Gordonia Formation are definitely recorded in the present project area.

3. POTENTIAL PALAEOLOGICAL HERITAGE WITHIN THE STUDY AREA

Fossil biotas recorded from each of the main rock units mapped at surface within the study region are briefly reviewed in Table 1 (Based largely on Almond & Pether 2008 and references therein), where an indication of the palaeontological sensitivity of each rock unit is also given. Pervasive calcretisation and chemical weathering of many near-surface bedrocks in the Northern Cape has often compromised their original fossil heritage in many areas.

The fossil record of the **Kalahari Group** is generally sparse and low in diversity. The **Gordonia Formation** dune sands were mainly active during cold, drier intervals of the Pleistocene Epoch that were inimical to most forms of life, apart from hardy, desert-adapted species. Porous dune sands are not generally conducive to fossil preservation. However, mummification of soft tissues may play a role here and migrating lime-rich groundwaters derived from the underlying bedrocks (including, for example, dolerite) may lead to the rapid calcretisation of organic structures such as burrows and root casts. Occasional terrestrial fossil remains that might be expected within this unit include calcretized rhizoliths (root casts) and termitaria (e.g. *Hodotermes*, the harvester termite), ostrich egg shells (*Struthio*) and shells of land snails (e.g. *Trigonephrus*) (Almond 2008, Almond & Pether 2008). Other fossil groups such as freshwater bivalves and gastropods (e.g. *Corbula*, *Unio*) and snails, ostracods (seed shrimps), charophytes (stonewort algae), diatoms (microscopic algae within siliceous shells) and stromatolites (laminated microbial limestones) are associated with local watercourses and pans. Microfossils such as diatoms may be blown by wind into nearby dune sands (Du Toit 1954, Dingle *et al.*, 1983). These Kalahari fossils (or subfossils) can be expected to occur sporadically but widely, and the overall palaeontological sensitivity of the Gordonia Formation is therefore considered to be low. Underlying calcretes of the **Mokolanen Formation** might also contain trace fossils such as rhizoliths, termite and other insect burrows, or even mammalian trackways. Mammalian bones, teeth and horn cores (also tortoise remains, and fish, amphibian or even crocodiles in wetter depositional settings such as pans) may be occasionally expected within Kalahari Group sediments and calcretes, notably those associated with ancient, Plio-Pleistocene alluvial gravels, pans and solution cavity infills. There is therefore a significant possibility of subsurface fossil remains being encountered along the margins of or within the Vlermuisleegte drainage line that forms the north-eastern margin of the Uitkoms study site (Fig. 2).

Important, taxonomically diverse Middle to Late Pleistocene mammalian macrofaunas have been recorded from multiple doline infill sediments at **Kathu Pan**, c. 5.5 km NW of Kathu town. The fauna mainly consists of delicate, fragmentary tooth material (caps or shells or dental enamel) but also include some bones with at least one almost intact ungulate skeleton (Fig. 6). Most teeth and associated artefacts are covered with a distinctive shiny silicate patina. The fossils are assigned to the Cornelian Mammal Age (c. 1.6 Ma to 500 ka) and Florisian Mammal Age (c. 200 to 12 ka) that are associated with Acheulean and MSA stone artefact assemblages respectively (Klein 1984, 1988, Beaumont *et al.* 1984, Beaumont 1990, Beaumont 2004, Porat *et al.* 2010 and refs. therein; see also

MacRae 1999). Interesting Cornelian mammal taxa found here include the extinct *Elephas recki* and *Hippopotamus gorgops* as well as various equids, white rhino and hartebeest / wildebeest-sized alcephalines. The dominance of grazers over browsers or mixed feeders among the Middle Pleistocene mammalian fauna suggests that the vegetation was grassy savannah at the time. Higher up in the succession the remains of typical Florisian forms such as *Pelorovis antiquus* the Giant Buffalo, *Megalotragus priscus* the Giant Hartebeest and *Equus capensis* the giant Cape Horse also occur (Fig. 7). Many of the tooth fragments as well as the associated MSA stone artefacts in this younger horizon are abraded, suggesting fluvial reworking of material into the doline together with the gravelly sand matrix. Additional fossil material of biostratigraphic and palaeoecological interest from the Kathu Pan doline infills include fossil pollens from well-developed peat horizons (Scott 2000), bird fossils, ostrich egg shell fragments and terrestrial gastropods. The mammalian remains may belong to animals attracted to permanent waterholes (e.g. spring eyes), especially during drier phases of the Pleistocene Epoch. The close association of large mammal fossils with abundant stone tools as well as occasional evidence for butchering suggests that human hunters or scavengers may also have played a role as concentration agents.

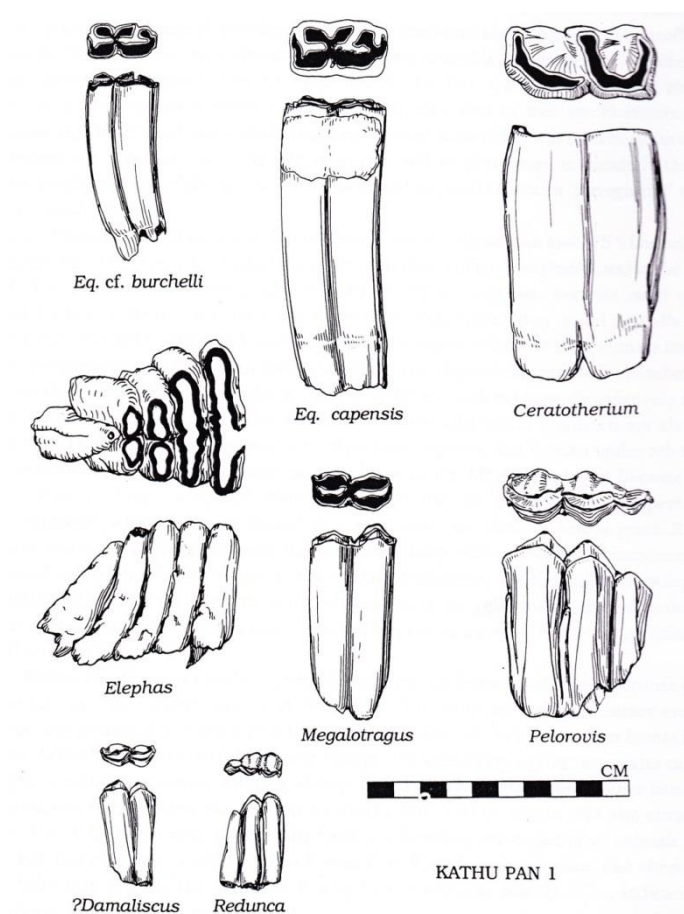


Fig. 6. Selection of Pleistocene large mammal teeth collected from solution cavity infills (dolines) at Kathu Pan, Northern Cape (From Klein 1988).

Potentially fossiliferous doline infill sediments similar to those at Kathu Pan are not apparent near-surface within the present development area on satellite images. However, the possibility that they are present but hidden beneath superficial sediments (e.g. aeolian sands) along the Vlermuisleegte drainage line cannot be excluded.

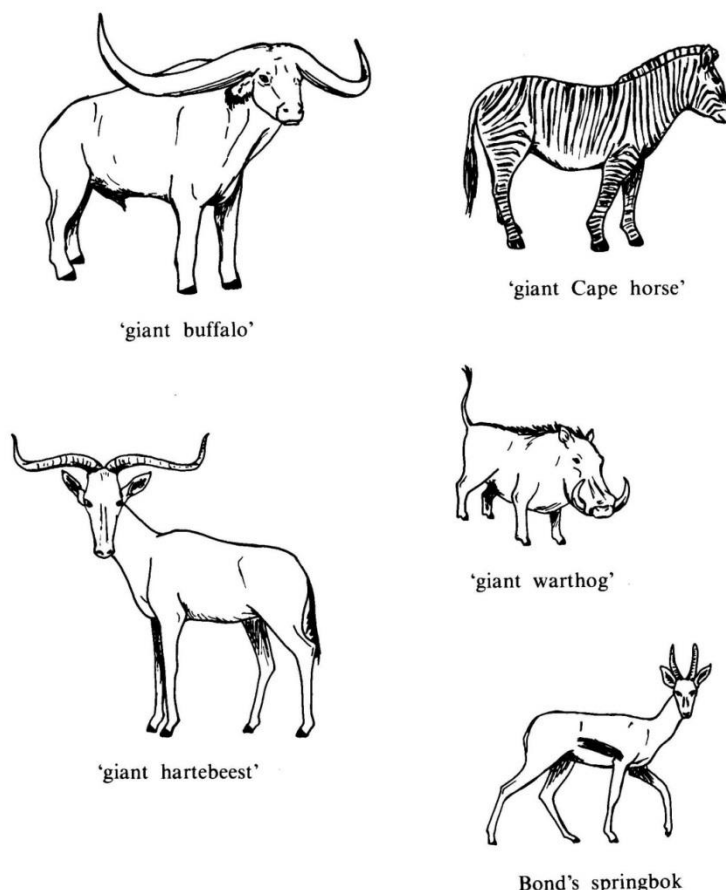


Fig. 7. Selection of extinct Pleistocene mammals of the Florisian Mammal Age, most of which are represented at Kathu Pan (From Klein 1984).

Low diversity trace fossil assemblages attributable to invertebrates and plants are commonly associated with Kalahari Group calcrete horizons and are likely to be represented within the present study area as well. Trace fossil assemblages recorded from calcretised upper Kalahari Group sediments in borrow pits near Witloop, c. 45 km NNW of Kathu, are probably attributable to infaunal invertebrates (e.g. insects such as termites), plant root moulds (rhizoliths) as well as the densely-packed stems of reedy vegetation associated with damp, vlei-like areas in the almost-abandoned course of the Witloopleegte in Late Pleistocene or Holocene times (Almond 2013a). Similar trace fossil assemblages are probably of widespread occurrence within the Kalahari Group (cf Nash & McLaren 2003).

Well-developed Kalahari calcrete hardpans exposed in quarries near Mamathwane, some 35 km NNW of Kathu, display a well-developed vuggy, bioturbated texture. Good calcrete burrow casts and rhizoliths (plant root casts) are seen within the main hardpan (Almond 2013b). Burrow casts are c. 1 cm wide and even in width, reaching lengths of over 50 cm. Subparallel, thin vertical structures are probable plant stem or root casts, probably related to reedy vegetation in vlei areas associated with palaeo-watercourses. Networks of karstic solution hollows, such as observed within calcrete hardpans in the Sishen area, to the southwest of the present study area, might have served as traps for vertebrates (e.g. small mammals and reptiles, reworked bones and teeth) as well as land snails in the Pleistocene Epoch (Almond 2013a). However, vertebrate or other fossil remains have not been recorded hitherto from such settings in the Kalahari region.

Table 1: Fossil heritage of rock units represented in the Kathu study region (From Almond & Pether 2008)

GEOLOGICAL UNIT	ROCK TYPES & AGE	FOSSIL HERITAGE	PALAEONTOLOGICAL SENSITIVITY	RECOMMENDED MITIGATION
OTHER LATE CAENOZOIC TERRESTRIAL DEPOSITS OF THE INTERIOR (Most too small to be indicated on 1: 250 000 geological maps)	Fluvial, pan, lake and terrestrial sediments, including diatomite (diatom deposits), pedocretes, spring tufa / travertine, cave deposits, peats, colluvium, soils, surface gravels including downwasted rubble MOSTLY QUATERNARY TO HOLOCENE (Possible peak formation 2.6-2.5 Ma)	Bones and teeth of wide range of mammals (e.g. mastodont proboscideans, rhinos, bovids, horses, micromammals), reptiles (crocodiles, tortoises), ostrich egg shells, fish, freshwater and terrestrial molluscs (unionid bivalves, gastropods), crabs, trace fossils (e.g. termitaria, horizontal invertebrate burrows, stone artefacts), petrified wood, leaves, rhizoliths, diatom floras, peats and palynomorphs. calcareous tufas at edge of Ghaap Escarpment might be highly fossiliferous (cf Taung in NW Province – abundant Makapanian Mammal Age vertebrate remains, including australopithecines)	LOW Scattered records, many poorly studied and of uncertain age	Any substantial fossil finds to be reported by ECO to SAHRA
Gordonia Formation (Qs) KALAHARI GROUP <i>plus</i> SURFACE CALCRETES (T1 / Qc)	Mainly aeolian sands <i>plus</i> minor fluvial gravels, freshwater pan deposits, calcretes PLEISTOCENE to RECENT	Calcretised rhizoliths & termitaria, ostrich egg shells, land snail shells, rare mammalian and reptile (e.g. tortoise) bones, teeth (e.g. doline infills) freshwater units associated with diatoms, molluscs, stromatolites etc.	LOW	Any substantial fossil finds to be reported by ECO to SAHRA

4. CONCLUSIONS AND RECOMMENDATIONS

According to geological maps, satellite images and recent palaeontological assessments in the Kathu area (e.g. Almond 2013a, 2014), the flat-lying Uitkoms housing study area is underlain by a considerable thickness of Plio-Pleistocene to Recent sediments of the Kalahari Group. The underlying Precambrian bedrocks – viz. dolomites, cherts and iron formations of the Transvaal Supergroup – are too deeply buried to be directly affected by the proposed development. The Kalahari Group succession near Kathu mainly comprises well-developed calcretes or surface limestones (Mokolanen Formation) that may total 30 m or more in thickness in the region, together with a thin (probably < 1 m) surface veneer of aeolian sands (Gordonia Formation), alluvial deposits and sparse near-surface gravels. In general the Kalahari Group calcretes and sands are of low palaeontological sensitivity, mainly featuring widely-occurring plant and animal trace fossils (e.g. invertebrate burrows, plant root casts). Recent palaeontological field assessments in the Sishen – Hotazel region by the author have not recorded significant fossil material within these near-surface Kalahari sediments. A very important fossil assemblage of Pleistocene to Holocene mammal remains - predominantly teeth with scarce bone material associated with Earlier, Middle and Later Stone Age artefacts, well-preserved peats and pollens - is recorded from unconsolidated doline (solution hollow) sediments at the well-known Kathu Pan site, located some 5.5 km northwest of Kathu. There are at present no obvious indications of comparable fossiliferous, tool-bearing solution hollow infills exposed at present within the study area but such sediments might conceivably be present but hidden beneath cover sands and calcretes along the Vlermuisleegte drainage line that runs along the north-eastern edge of the present study area. However, according to the proposed layout for the Uitkoms housing development, this potentially sensitive zone is unlikely to be directly impacted by the proposed development.

The overall impact significance of the proposed Uitkoms housing development is therefore rated as LOW as far as palaeontological heritage is concerned. Likewise, cumulative impacts are likely to be of LOW significance, given the scarcity of important fossils (especially vertebrate remains) within the sedimentary rock units concerned as well as the huge outcrop area of the Kalahari Group as a whole. The degree of confidence for this assessment is rated as medium because of the uncertainty surrounding the presence or absence of potentially fossiliferous buried doline infill deposits within the study area.

Due to the inferred low impact significance of the proposed housing development, as far as fossil heritage resources are concerned, no further specialist palaeontological studies or monitoring are recommended at this stage.

The following mitigation measures to safeguard fossils exposed on site during the construction phase of the development are recommended:

- The ECO and / or the Site Engineer responsible for the development must remain aware that all sedimentary deposits have the potential to contain fossils and he / she should thus monitor all substantial excavations into sedimentary bedrock for fossil remains. This applies especially to excavations close to the Vlermuisleegte drainage line on the north-eastern edge of farm Uitkoms No. 462, Portion 1. If any substantial fossil remains (e.g. vertebrate bones, teeth, horn cores) are found during construction SAHRA should be notified immediately (Contact details: SAHRA, 111 Harrington Street, Cape Town. PO Box 4637, Cape Town 8000, South Africa. Phone: +27 (0)21 462 4502. Fax: +27 (0)21 462 4509. Web: www.sahra.org.za) so that appropriate mitigation (i.e. recording, sampling or collection) by a palaeontological specialist can be considered and implemented, at the developer's expense.
- A chance-find procedure should be implemented so that, in the event of fossils being uncovered, the ECO / Site Engineer will take the appropriate action, which includes:
 - Stopping work in the immediate vicinity and fencing off the area with tape to prevent further access;
 - Reporting the discovery to the provincial heritage agency and/or SAHRA;
 - Appointing a palaeontological specialist to inspect, record and (if warranted) sample or collect the fossil remains;
 - Implementing further mitigation measures proposed by the palaeontologist; and
 - Allowing work to resume only once clearance is given in writing by the relevant authorities.

If the mitigation measures outlined above are adhered to, the residual impact significance of any construction phase impacts on local palaeontological resources is considered to be low.

The mitigation measures proposed here should be incorporated into the Environmental Management Programme (EMPr) for the Uitkoms housing project. The palaeontologist concerned with mitigation work will need a valid collection permit from SAHRA. All work would have to conform to international best practice for palaeontological fieldwork and the study (e.g. data recording fossil collection and curation, final report) should adhere to the minimum standards for Phase 2 palaeontological studies recently published by SAHRA (2013).

6. ACKNOWLEDGEMENTS

Mr Clinton Geyser of EnviroAfrica cc, Somerset West, is thanked for commissioning this study and for providing the relevant background information.

7. REFERENCES

ALMOND, J.E. 2008. Fossil record of the Loeriesfontein sheet area (1: 250 000 geological sheet 3018). Unpublished report for the Council for Geoscience, Pretoria, 32 pp.

ALMOND, J.E. 2010. Prospecting application for iron ore and manganese between Sishen and Postmasburg, Northern Cape Province: farms Jenkins 562, Marokwa 672, Thaakwaneng 675, Driehoekspan 435, Doringpan 445 and Macarthy 559: desktop palaeontological assessment, 20 pp. Natura Viva cc, Cape Town.

ALMOND, J.E. 2012a. Proposed westerly extension of Sishen Iron Ore Mine near Kathu, Kalagadi District Municipality, Northern Cape. Palaeontological specialist study” desktop study, 18 pp. Natura Viva cc, Cape Town.

ALMOND, J.E. 2012b. Proposed 16 Mtpa expansion of Transnet’s existing manganese ore export railway line & associated infrastructure between Hotazel and the port of Ngqura, Northern & Eastern Cape. Part 1: Hotazel to Kimberley, Northern Cape. Palaeontological assessment: desktop study, 28 pp.

ALMOND, J.E. 2013a. Proposed 16 Mtpa expansion of Transnet’s existing manganese ore export railway line & associated infrastructure between Hotazel and the Port of Ngqura, Northern & Eastern Cape. Part 1: Hotazel to Kimberley, Northern Cape. Palaeontological specialist assessment: combined desktop and field-based study, 85 pp. Natura Viva cc, Cape Town.

ALMOND, J.E. 2013b. Proposed new railway compilation yard at Mamathwane near Hotazel, John Taolo Gaetsewe District Municipality, Northern Cape. Palaeontological specialist assessment: combined desktop and field-based study, 29 pp. Natura Viva cc, Cape Town.

ALMOND, J.E. 2014. Residential development on Remainder and Portion 3 of Farm Bestwood RD 459 in Kathu, Gamagara Municipality, Northern Cape Province. Palaeontological specialist assessment: desktop study , 33 pp. Natura Viva cc, Cape Town.

ALMOND, J.E. 2015. Proposed AEP Legoko solar PV energy facility on Farm 460 Legoka near Kathu, Gamagara Municipality, Northern Cape. Palaeontological specialist assessment: desktop study, 26 pp. Natura Viva cc, Cape Town.

ALMOND, J.E. & PETHER, J. 2008. Palaeontological heritage of the Northern Cape. Interim SAHRA technical report, 124 pp. Natura Viva cc., Cape Town.

BEAUMONT, P.B. 1990. Kathu Pan. In: Beaumont, P.B. & Morris, D. (Eds.) Guide to archaeological sites in the Northern Cape, pp. 75-100 *plus* table 1, figs 1-19. McGregor Museum, Kimberley.

BEAUMONT, P.B. 2004. Kathu Pan and Kathu Townlands / Uitkoms. In: Archaeology in the Northern Cape: some key sites, pp. 50-53 plus 4 pages of figs. McGregor Museum, Kimberley.

BEAUMONT, P.B., VAN ZINDEREN BAKKER, E.M. & VOGEL, J.C. 1984. Environmental changes since 32, 000 BP at Kathu Pan, Northern Cape. In: Vogel, J.C. (Ed.) Late Cenozoic palaeoclimates of the southern hemisphere, pp. 329-338. Balkema, Rotterdam.

BOSCH, P.J.A. 1993. Die geologie van die gebied Kimberley. Explanation to 1: 250 000 geology Sheet 2824 Kimberley, 60 pp. Council for Geoscience, Pretoria.

BUTZER, K.W. 1984. Archaeology and Quaternary environment in the interior of southern Africa. In: Klein, R.G. (Ed.) Southern African prehistory and paleoenvironments, pp 1-64. Balkema, Rotterdam.

DINGLE, R.V., SIESSER, W.G. & NEWTON, A.R. 1983. Mesozoic and Tertiary geology of southern Africa. viii + 375 pp. Balkema, Rotterdam.

DU TOIT, A. 1954. The geology of South Africa. xii + 611pp, 41 pls. Oliver & Boyd, Edinburgh.

HADDON, I.G. 2000. Kalahari Group sediments. In: Partridge, T.C. & Maud, R.R. (Eds.) The Cenozoic of southern Africa, pp. 173-181. Oxford University Press, Oxford.

HADDON, I.G. 2005. The sub-Kalahari geology and tectonic evolution of the Kalahari Basin, Southern Africa. Unpublished PhD thesis, University of Johannesburg, 343 pp.

HENDEY, Q.B. 1984. Southern African late Tertiary vertebrates. In: Klein, R.G. (Ed.) Southern African prehistory and paleoenvironments, pp 81-106. Balkema, Rotterdam.

KLEIN, R.G. 1984. The large mammals of southern Africa: Late Pliocene to Recent. In: Klein, R.G. (Ed.) Southern African prehistory and paleoenvironments, pp 107-146. Balkema, Rotterdam.

KLEIN, R.G. 1988. The archaeological significance of animal bones from Acheulean sites in southern Africa. *The African Archaeological Review* 6, 3-25.

MACRAE, C. 1999. Life etched in stone. Fossils of South Africa. 305 pp. The Geological Society of South Africa, Johannesburg.

MCCARTHY, T. & RUBIDGE, B. 2005. The story of Earth and life: a southern African perspective on a 4.6-billion-year journey. 334pp. Struik, Cape Town.

NASH, D.J. & SHAW, P.A. 1998. Silica and carbonate relationships in silcrete-calcrete intergrade duricrusts from the Kalahari of Botswana and Namibia. *Journal of African Earth Sciences* 27, 11-25.

NASH, D.J. & MCLAREN, S.J. 2003. Kalahari valley calcretes: their nature, origins, and environmental significance. *Quaternary International* III, 3-22.

PARTRIDGE, T.C., BOTHA, G.A. & HADDON, I.G. 2006. Cenozoic deposits of the interior. In: Johnson, M.R., Anhaeusser, C.R. & Thomas, R.J. (Eds.) *The geology of South Africa*, pp. 585-604. Geological Society of South Africa, Marshalltown.

PORAT, N., CHAZAN, M., GRÜN, R., AUBERT, M., EISENMANN, V. & HORWITZ, L.K. 2010. New radiometric ages for the Fauresmith industry from Kathu Pan, southern Africa: implications for Earlier to Middle Stone Age transition. *Journal of Archaeological Science* 37, 269-283.

SAHRA 2013. Minimum standards: palaeontological component of heritage impact assessment reports, 15 pp. South African Heritage Resources Agency, Cape Town.

SCOTT, L. 2000. Pollen. In: Partridge, T.C. & Maud, R.R. (Eds.) *The Cenozoic of southern Africa*, pp.339-35. Oxford University Press, Oxford.

THOMAS, M.J. 1981. The geology of the Kalahari in the Northern Cape Province (Areas 2620 and 2720). Unpublished MSc thesis, University of the Orange Free State, Bloemfontein, 138 pp.

THOMAS, R.J., THOMAS, M.A. & MALHERBE, S.J. 1988. The geology of the Nossob and Twee Rivieren areas. Explanation for 1: 250 000 geology sheets 2520-2620. 17pp. Council for Geoscience, Pretoria.

THOMAS, D.S.G. & SHAW, P.A. 1991. The Kalahari environment, 284 pp. Cambridge University Press.

TANKARD, A.J., JACKSON, M.P.A., ERIKSSON, K.A., HOBDAV, D.K., HUNTER, D.R. & MINTER, W.E.L. 1982. Crustal evolution of southern Africa – 3.8 billion years of earth history, xv + 523pp. Springer Verlag, New York.

TRUTER, F.C., WASSERSTEIN, B., BOTHA, P.R., VISSER, D.L.J., BOARDMAN, L.G. & PAVER, G.L. 1938. The geology and mineral deposits of the Olifants Hoek area, Cape Province. Explanation of 1: 125 000 geology sheet 173 Olifants Hoek, 144 pp. Council for Geoscience, Pretoria.

VISSER, D.L.J. 1958. The geology and mineral deposits of the Griquatown area, Cape Province. Explanation to 1: 125 000 geology sheet 175 Griquatown, 72 pp. Council for Geoscience, Pretoria.

VISSER, D.J.L. *et al.* 1989. The geology of the Republics of South Africa, Transkei, Bophuthatswana, Venda and Ciskei and the Kingdoms of Lesotho and Swaziland. Explanation of the 1: 1 000 000 geological map, fourth edition, 491 pp. Council for Geoscience, Pretoria.

8. QUALIFICATIONS & EXPERIENCE OF THE AUTHOR

Dr John Almond has an Honours Degree in Natural Sciences (Zoology) as well as a PhD in Palaeontology from the University of Cambridge, UK. He has been awarded post-doctoral research fellowships at Cambridge University and in Germany, and has carried out palaeontological research in Europe, North America, the Middle East as well as North and South Africa. For eight years he was a scientific officer (palaeontologist) for the Geological Survey / Council for Geoscience in the RSA. His current palaeontological research focuses on fossil record of the Precambrian - Cambrian boundary and the Cape Supergroup of South Africa. He has recently written palaeontological reviews for several 1: 250 000 geological maps published by the Council for Geoscience and has contributed educational material on fossils and evolution for new school textbooks in the RSA.

Since 2002 Dr Almond has also carried out palaeontological impact assessments for developments and conservation areas in the Western, Eastern and Northern Cape under the aegis of his Cape Town-based company *Natura Viva* cc. He is a long-standing member of the Archaeology, Palaeontology and Meteorites Committee for Heritage Western Cape (HWC) and an advisor on palaeontological conservation and management issues for the Palaeontological Society of South Africa (PSSA), HWC and SAHRA. He is currently compiling technical reports on the provincial palaeontological heritage of Western, Northern and Eastern Cape for SAHRA and HWC. Dr Almond is an accredited member of PSSA and APHP (Association of Professional Heritage Practitioners – Western Cape).

Declaration of Independence

I, John E. Almond, declare that I am an independent consultant and have no business, financial, personal or other interest in the proposed development project, application or appeal in respect of which I was appointed other than fair remuneration for work performed in connection with the activity, application or appeal. There are no circumstances that compromise the objectivity of my performing such work.



Dr John E. Almond

Palaeontologist, *Natura Viva* cc