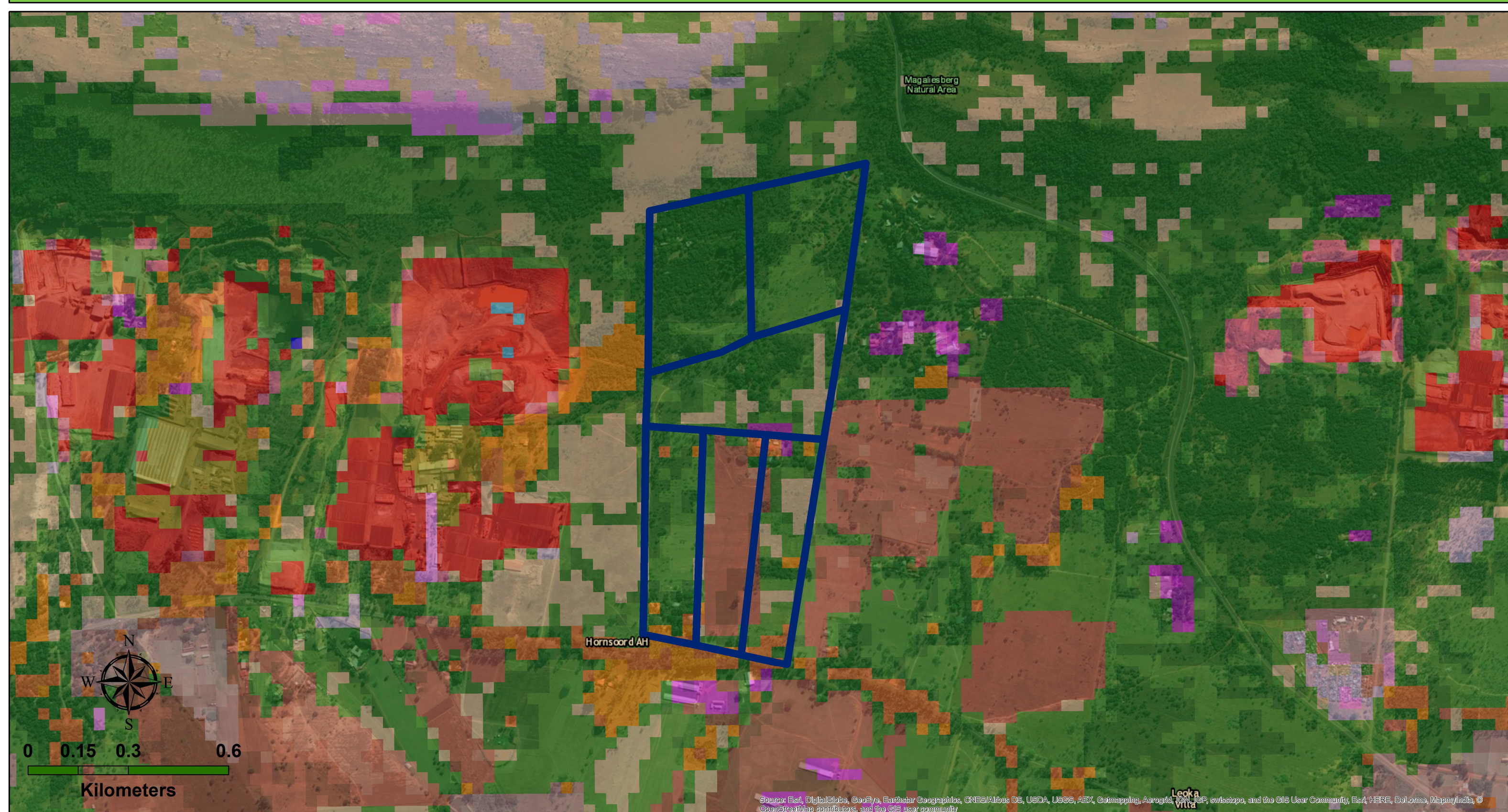


Land Uses of the Proposed Prospecting Site and Surrounding Areas



Source: Esri, DigitalGlobe, GeoEye, Earthstar Geographics, CNES/Airbus DS, USDA, USGS, AEX, Getmapping, Aerogrid, IGN, IGP, swisstopo, and the GIS User Community, Esri, HERE, DeLorme, MapmyIndia, © OpenStreetMap contributors, and the GIS user community

Legend

- | | | | |
|-------------------------------|-------------------------------|-------------------------------------|--|
| Proposed Prospecting Portions | Cultivated comm fields (med) | Mines water seasonal | Urban smallholding (open trees / bush) |
| Thicket /Dense bush | Cultivated comm fields (low) | Mines water permanent | Urban smallholding (low veg / grass) |
| Woodlan/Open bush | Plantations / Woodlots mature | Urban industrial | Urban built-up (dense trees / bush) |
| Grassland | Plantation / Woodlots young | Urban informal (dense trees / bush) | Urban built-up (open trees / bush) |
| Low shrubland | Mines 1 bare | Urban informal (open trees / bush) | Urban built-up (low veg / grass) |



© Environmental Assurance (Pty) Ltd. This document is protected by Copyright i.t.o. the South African Copyright Act (98 of 1978) and it may not be used, copied or otherwise reproduced without the written consent of the author or company.

Author: L. Taylor