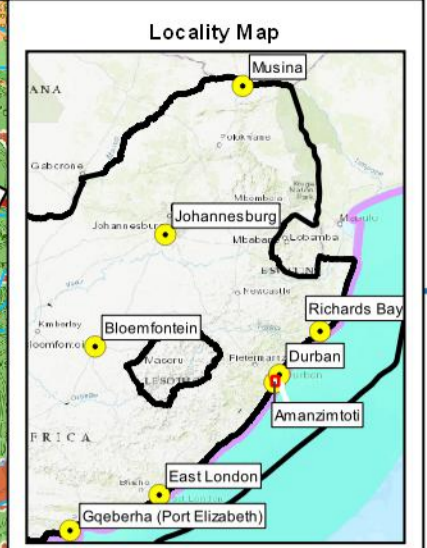


30°48.736'E 30°50.493'E 30°52.251'E 30°54.008'E 30°55.765'E 30°57.523'E

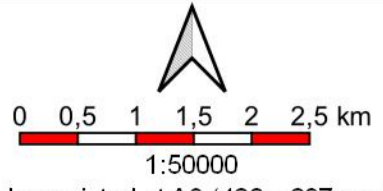
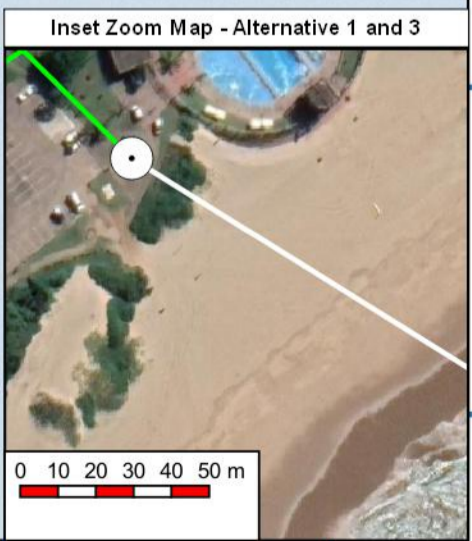
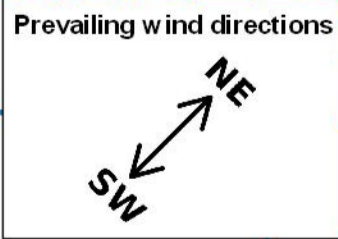
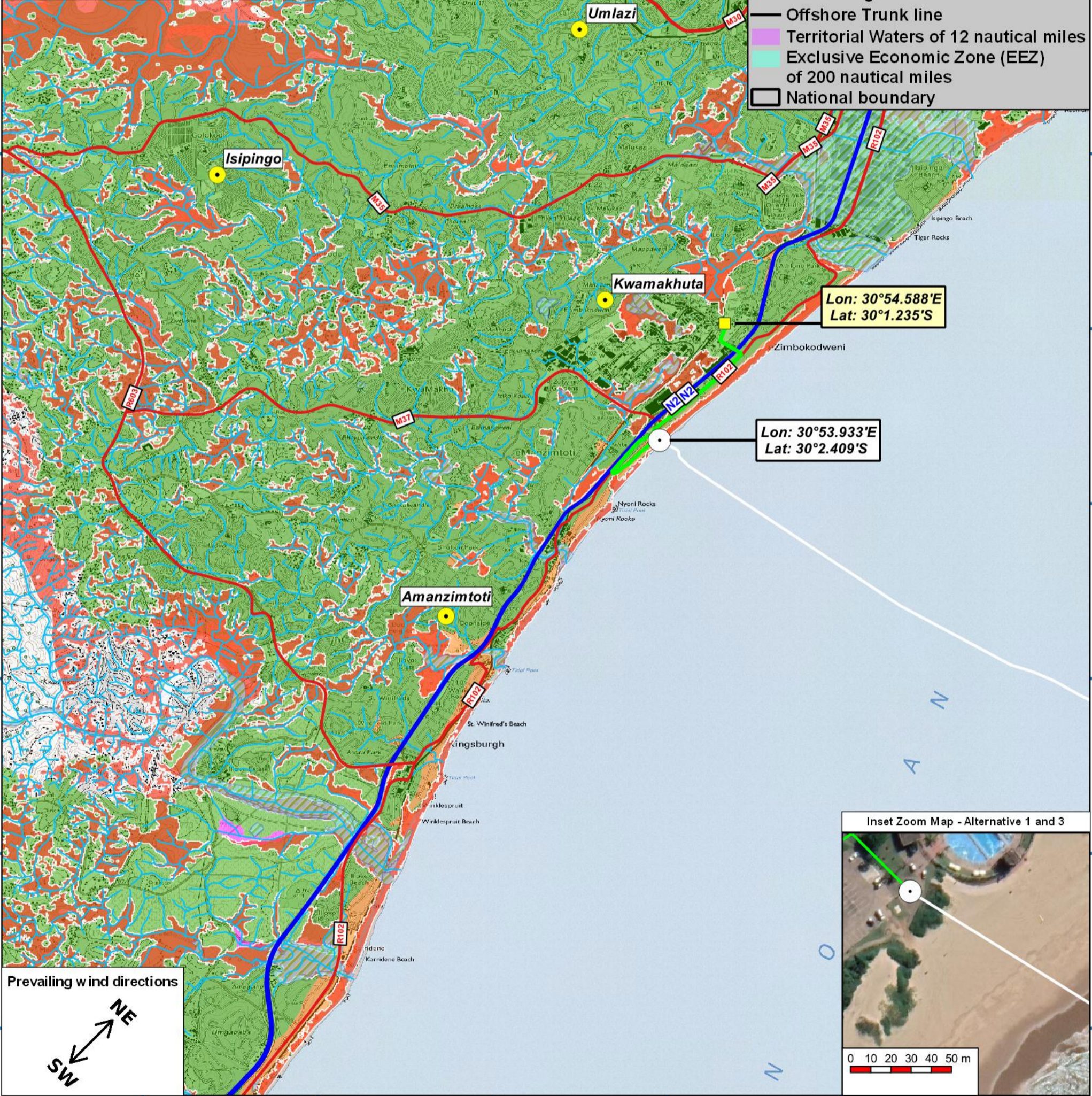
29°56.015'S 29°57.773'S 29°59.530'S 30°1.287'S 30°3.045'S 30°4.802'S 30°6.559'S 30°8.317'S

29°56.015'S 29°57.773'S 29°59.530'S 30°1.287'S 30°3.045'S 30°4.802'S 30°6.559'S 30°8.317'S

- Legend (Main map)**
- Proposed BMH (WIOCC)
 - CLS (WIOCC)
 - Proposed WIOCC fronthaul route
 - Marine alignment
 - Rivers (eThekweni 2019)
 - Wetlands (NFEPA 2011)
 - Critical Biodiversity Areas (CBA)**
 - CBA: Irreplaceable
 - CBA: Optimal
 - SANBI Vegmap (2018 Beta)**
 - KwaZulu-Natal Coastal Belt Grassland
 - Northern Coastal Forest
 - Subtropical Alluvial Vegetation
 - Subtropical Seashore Vegetation



- Legend (Locality map)**
- Marine alignment
 - Offshore Trunk line
 - Territorial Waters of 12 nautical miles
 - Exclusive Economic Zone (EEZ) of 200 nautical miles
 - National boundary



1:50000
when printed at A3 (420 x 297 mm)
Date of print: 27 Jul 2021

Co-Ordinate system
Projection: Unprojected (Geographic)
Ellipsoid: WGS84
Units: Decimal Degrees
Main map grid coordinates
Degrees and Decimal Minutes
Distance notes
1 nautical mile = 1.852km
1km = 0.539957km

2AFRICA/GERA (East) Cable System

Amanzimtoti

Locality Map

30°53.447'E

30°53.919'E

30°54.390'E

30°54.862'E

30°1.098'S

30°1.098'S

30°1.569'S

30°1.569'S

30°2.041'S

30°2.041'S

30°2.512'S

30°2.512'S

30°2.984'S

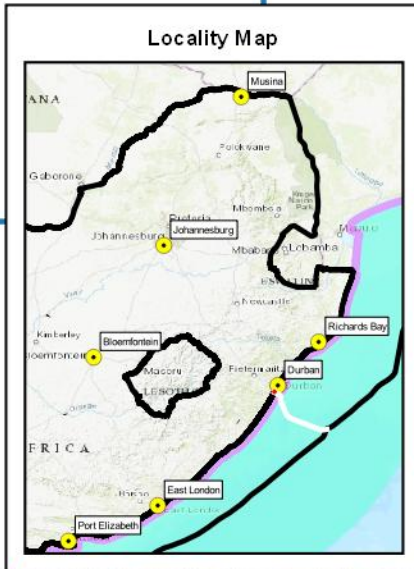
30°2.984'S

30°53.447'E

30°53.919'E

30°54.390'E

30°54.862'E



Legend (Locality map)

- Marine alignment
- Offshore Trunk line
- Territorial Waters of 12 nautical miles
- Exclusive Economic Zone (EEZ) of 200 nautical miles
- National boundary

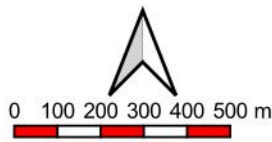


Legend (Main map)

- Beach Man Hole Alternative 1 (Liquid Telecom)
- Beach Manhole Alternative 2
- Beach Manhole Alternative 3 (WIOCC)
- CLS (WIOCC)
- Proposed WIOCC fronthaul route
- Marine route alternatives
 - Marine alignment alternative 1
 - Marine alignment alternative 2
 - Marine alignment alternative 3
- Rivers (eThekweni 2019)
- Wetlands (NFEPA 2011)

Mapping and layout by

For Giles Churchill



when printed at A4 (297 x 210 mm)
Date of print: 08 Mar 2021

Co-Ordinate system
Projection: Unprojected
(Geographic)
Ellipsoid: WGS84
Units: Decimal Degrees

Distance notes
1 nautical mile = 1.852km
1km = 0.539957km





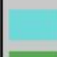
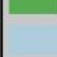

**2AFRICA/GERA (East)
Cable System**

Amanzimtoti

**Onshore alignment
with wetlands, rivers,
alternatives and
other points of interest**

30°47.352'E 32°11.323'E 33°35.293'E 34°59.264'E

Legend (Main map)

-  Marine alignment
-  Offshore Trunk line
-  Territorial Waters of 12 nautical miles
-  Exclusive Economic Zone (EEZ) of 200 nautical miles
-  Marine Protected Areas (as gazetted 2019)
-  Marine Protected Areas (SANBI: 2011)
-  Focus areas for Offshore Protection

Notes:

The extension line indicating the Territorial Waters (12 nautical miles) and Exclusive Economic Zone (200 nautical miles) between South Africa and Mozambique is approximate.

26°35.441'S

26°35.441'S

27°59.411'S

27°59.411'S

29°23.382'S

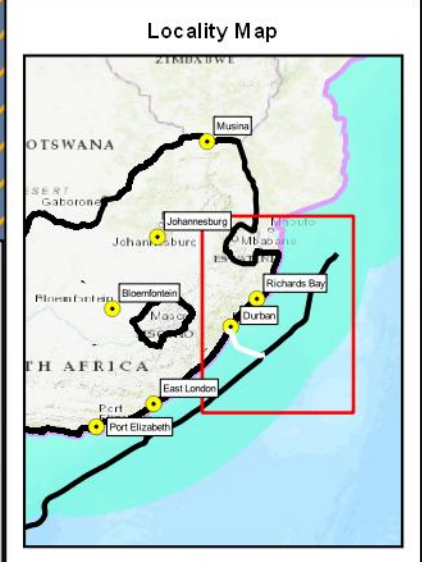
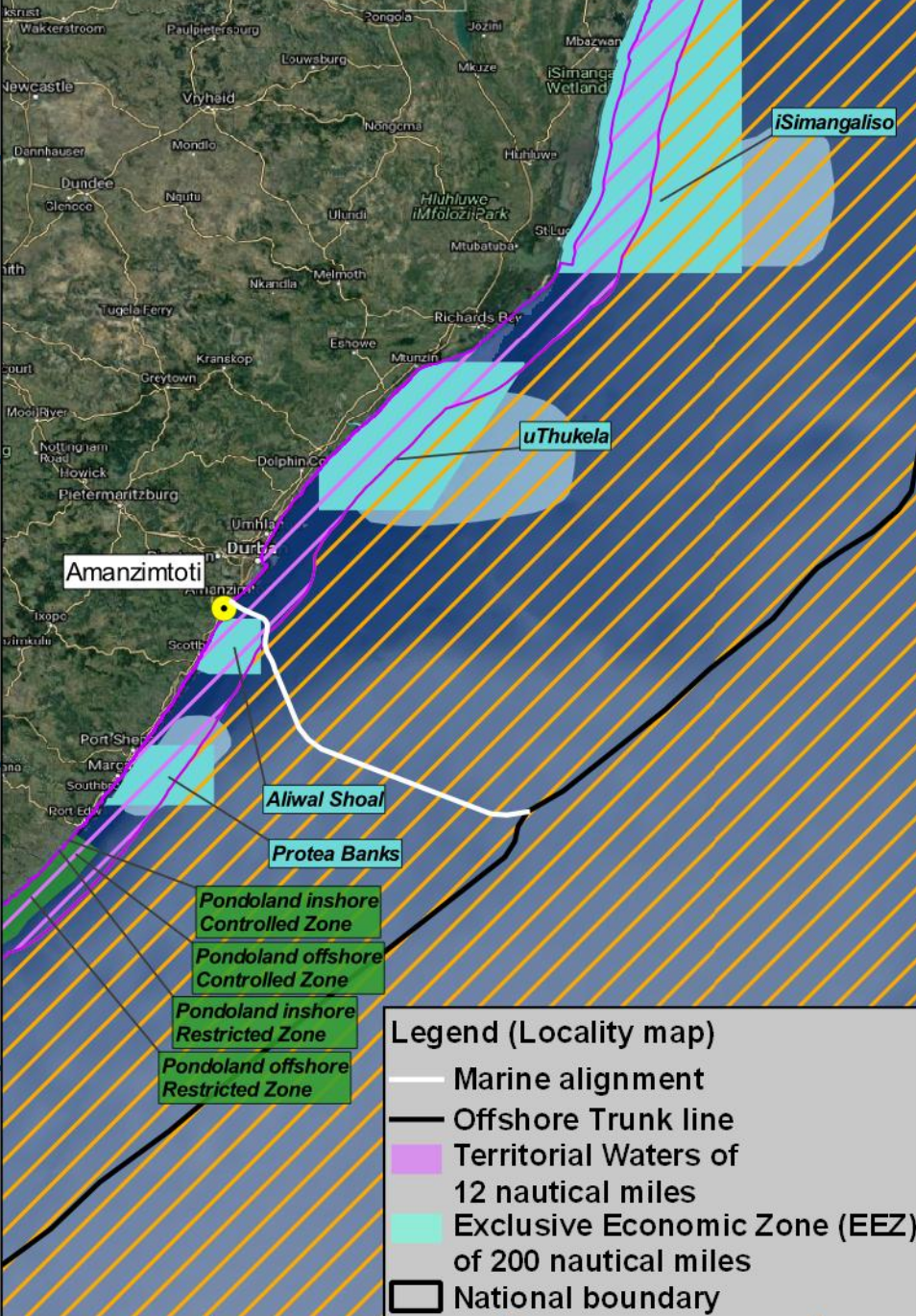
29°23.382'S

30°47.352'S



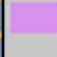
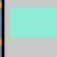

30°47.352'S

32°11.323'S

32°11.323'S



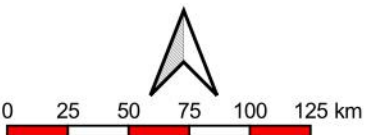
Legend (Locality map)

-  Marine alignment
-  Offshore Trunk line
-  Territorial Waters of 12 nautical miles
-  Exclusive Economic Zone (EEZ) of 200 nautical miles
-  National boundary

30°47.352'E 32°11.323'E 33°35.293'E 34°59.264'E

Mapping and layout by

For Giles Churchill



1:2500000

when printed at A4 (297 x 210 mm)

Date of print: 08 Mar 2021

Co-Ordinate system
Projection: Unprojected
(Geographic)
Ellipsoid: WGS84
Units: Decimal Degrees

**2AFRICA/GERA (East)
Cable System**

Amanzimtoti

**Offshore Cable Alignment
from trunkline, with MPAs**

Distance notes

1 nautical mile = 1.852km

1km = 0.539957km

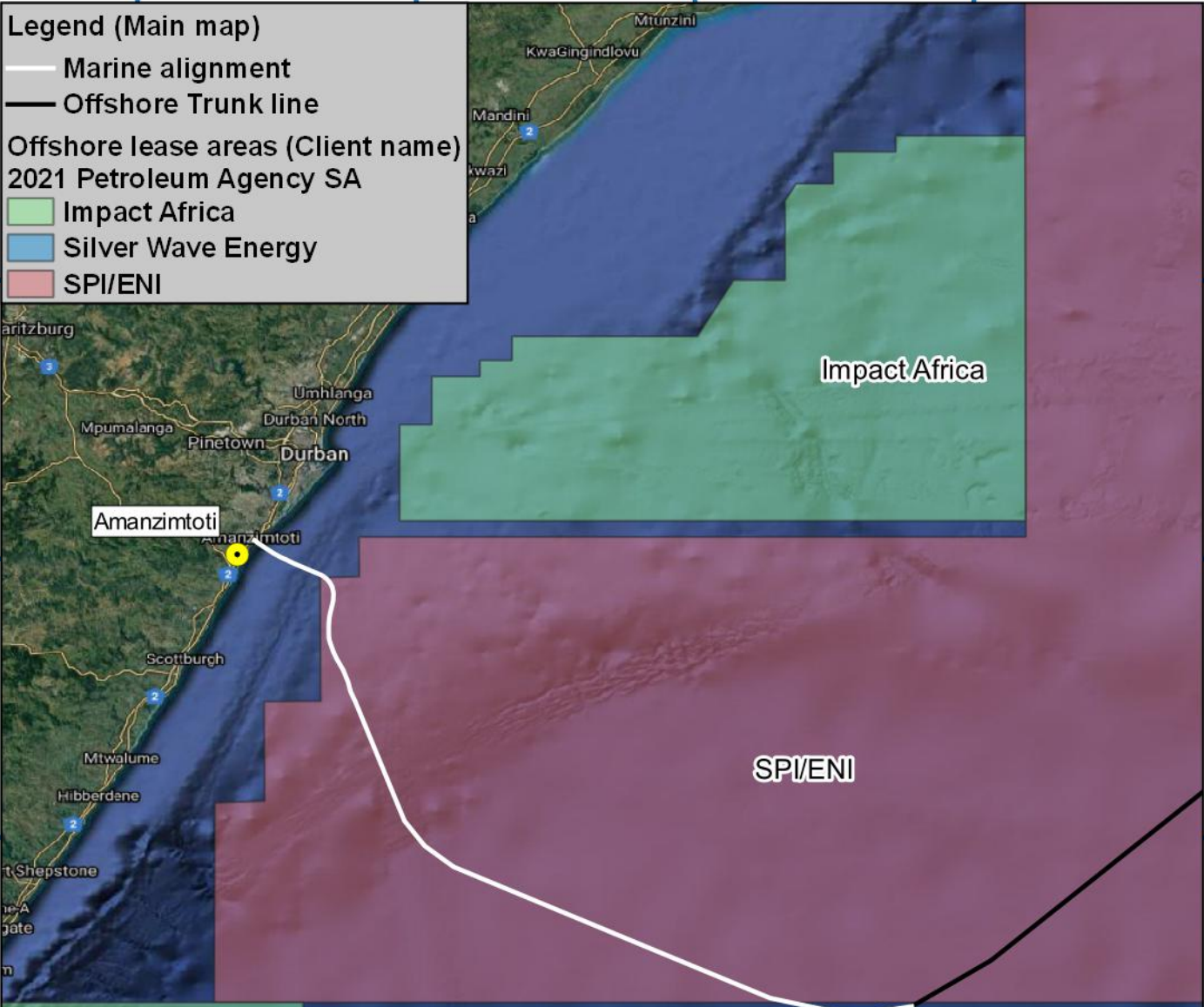
30°39.409' 31°14.115' 31°48.821' 32°23.526'

Legend (Main map)

- Marine alignment
- Offshore Trunk line

Offshore lease areas (Client name)
2021 Petroleum Agency SA

- Impact Africa
- Silver Wave Energy
- SPI/ENI



-29°29.997'

-30°4.703'

-30°39.409'

-31°14.115'

-31°48.821'

-29°29.997'

-30°4.703'

-30°39.409'

-31°14.115'

-31°48.821'

Impact Africa

SPI/ENI

Locality Map



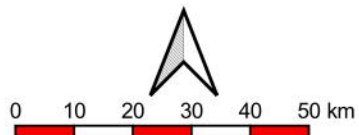
Legend (Locality map)

- Marine alignment
- Offshore Trunk line
- Territorial Waters of 12 nautical miles
- Exclusive Economic Zone (EEZ) of 200 nautical miles
- National boundary

30°39.409' 31°14.115' 31°48.821' 32°23.526'

Mapping and layout by

For Giles Churchill



when printed at A4 (297 x 210 mm)
Date of print: 21 Jul 2021

Co-Ordinate system
Projection: Unprojected
(Geographic)
Ellipsoid: WGS84
Units: Decimal Degrees

Distance notes
1 nautical mile = 1.852km
1km = 0.539957km

2AFRICA/GERA (East) Cable System

Amanzimtoti

Offshore Cable Alignment from trunk line with Offshore Lease Areas

30°48.736'E 30°50.493'E 30°52.251'E 30°54.008'E 30°55.765'E 30°57.523'E

Legend (Main map)

- Proposed BMH (WIOCC)
- CLS (WIOCC)
- Proposed WIOCC fronthaul route
- Marine alignment

Locality Map

Legend (Locality map)

- Marine alignment
- Offshore Trunk line
- Territorial Waters of 12 nautical miles
- Exclusive Economic Zone (EEZ) of 200 nautical miles
- National boundary

29°56.015'S
29°57.773'S
29°59.530'S
30°1.287'S
30°3.045'S
30°4.802'S
30°6.559'S
30°8.317'S

29°56.015'S
29°57.773'S
29°59.530'S
30°1.287'S
30°3.045'S
30°4.802'S
30°6.559'S
30°8.317'S



Prevailing wind directions

Inset Zoom Map - Alternative 1 and 3

0 10 20 30 40 50 m

30°48.736'E 30°50.493'E 30°52.251'E 30°54.008'E 30°55.765'E 30°57.523'E



0 0,5 1 1,5 2 2,5 km

1:50000

when printed at A3 (420 x 297 mm)

Date of print: 30 Jul 2021

Co-Ordinate system
Projection: Unprojected (Geographic)
Ellipsoid: WGS84
Units: Decimal Degrees
Main map grid coordinates
Degrees and Decimal Minutes
Distance notes
1 nautical mile = 1.852km
1km = 0.539957km

2AFRICA/GERA (East) Cable System

Amanzimtoti

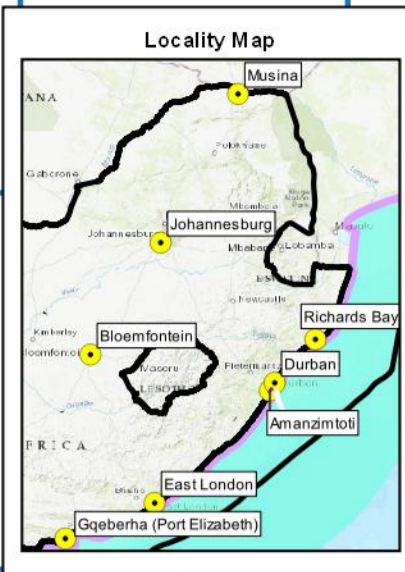
Locality Map



30°53 313'E 30°53 582'E 30°53 852'E 30°54 121'E 30°54 391'E 30°54 660'E 30°54 930'E

30°1 301'S
30°1 570'S
30°1 840'S
30°2 109'S
30°2 379'S
30°2 648'S
30°2 918'S

30°1 301'S
30°1 570'S
30°1 840'S
30°2 109'S
30°2 379'S
30°2 648'S
30°2 918'S

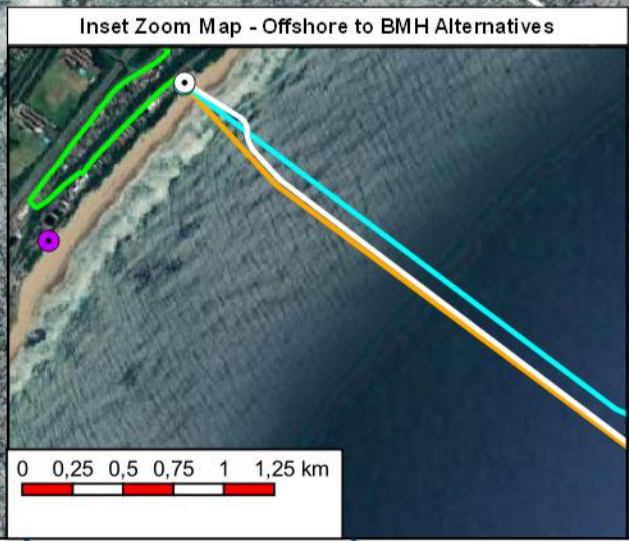
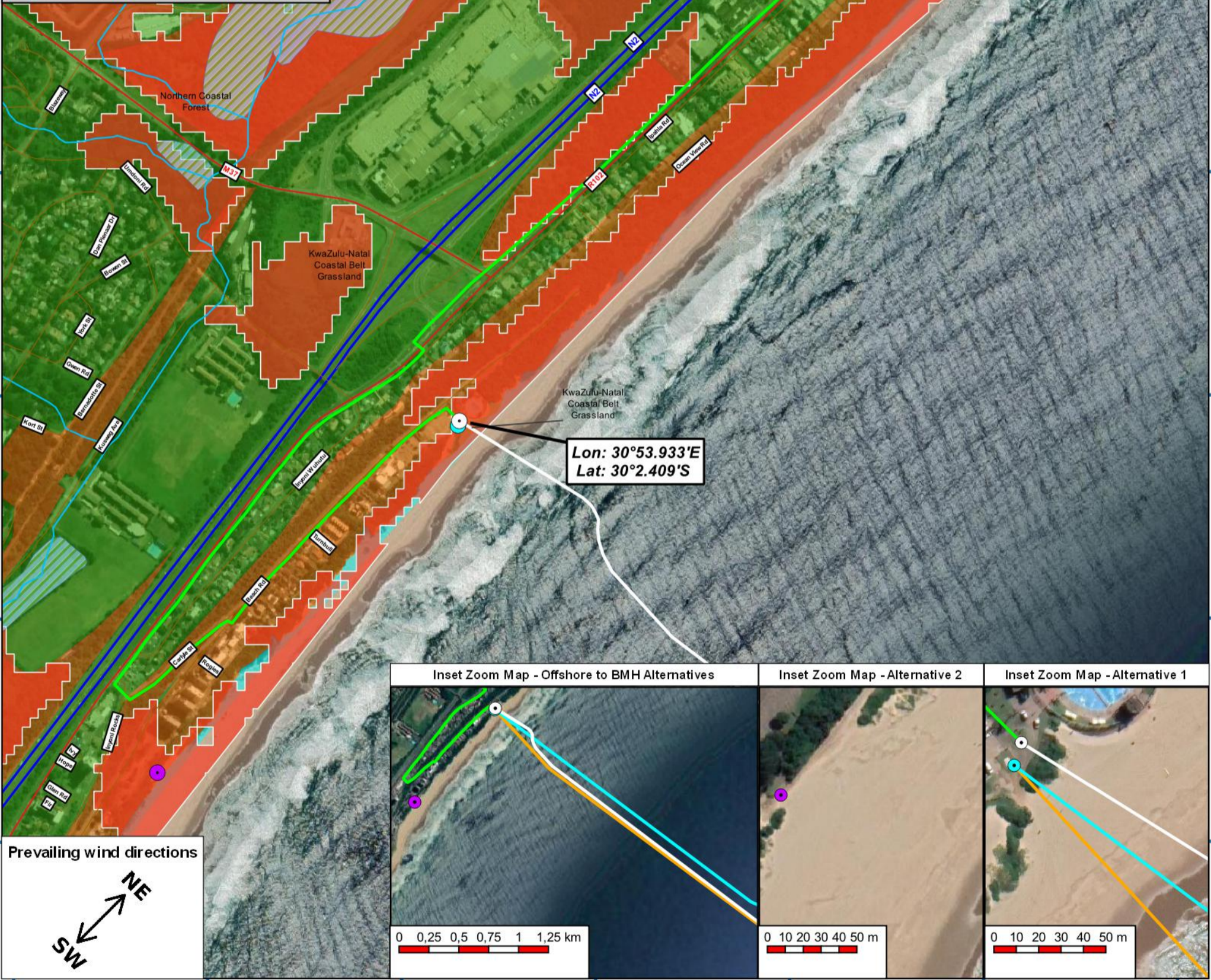


Legend (Locality map)

- Marine alignment
- Offshore Trunk line
- Territorial Waters of 12 nautical miles
- Exclusive Economic Zone (EEZ) of 200 nautical miles
- National boundary

Legend (Main map)

- Beach Manhole Alternative 1 (Liquid Telecom)
- Beach Manhole Alternative 2
- Beach Manhole Alternative 3 (WIOCC)
- CLS (WIOCC)
- Proposed WIOCC fronthaul route
- Marine alignment
- Rivers (eThekweni 2019)
- Wetlands (NFEPA 2011)
- Critical Biodiversity Areas (CBA)
- CBA: Irreplaceable



Mapping and layout by
S3 Technologies
Spatial Systems Solutions

For Giles Churchill
acer
AFRICA

0 100 200 300 400 500 m
1:10000
when printed at A3 (420 x 297 mm)
Date of print: 30 Jul 2021

Co-Ordinate system
Projection: Transverse Mercator
Datum: Hartbeeshoek 1994
Ellipsoid: WGS84
Meridian: Lo31°
Units: Metres

Distance notes
1 nautical mile = 1.852km
1km = 0.539957nmi

2AFRICA/GERA (East) Cable System
Amanzimtoti
Onshore alignment with alternatives, landing point and other points of interest

30°53.042'E 30°53.581'E 30°54.120'E 30°54.659'E

30°1.299'S
30°1.838'S

30°1.299'S
30°1.838'S

30°2.377'S

30°2.377'S

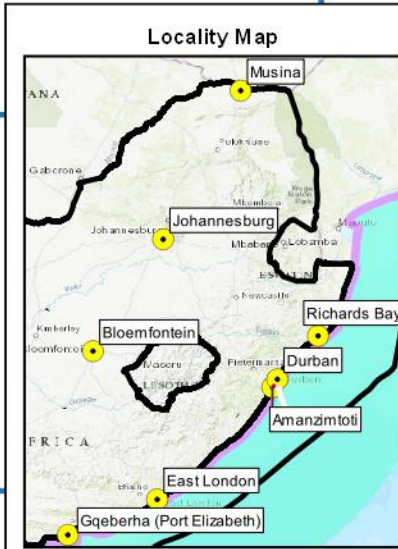
30°2.916'S

30°2.916'S

30°3.455'S

30°3.455'S

30°53.042'E 30°53.581'E 30°54.120'E 30°54.659'E



Legend (Main map)

- Beach Man Hole
- Alternative 1 (Liquid Telecom)
- Beach Manhole Alternative 2
- Beach Manhole Alternative 3 (WIOCC)
- CLS (WIOCC)
- Marine alignment alternative 1
- Marine alignment alternative 2
- Marine alignment alternative 3
- Rivers (eThekweni 2019)
- Wetlands (NFEPA 2011)
- Proposed WIOCC fronthaul route

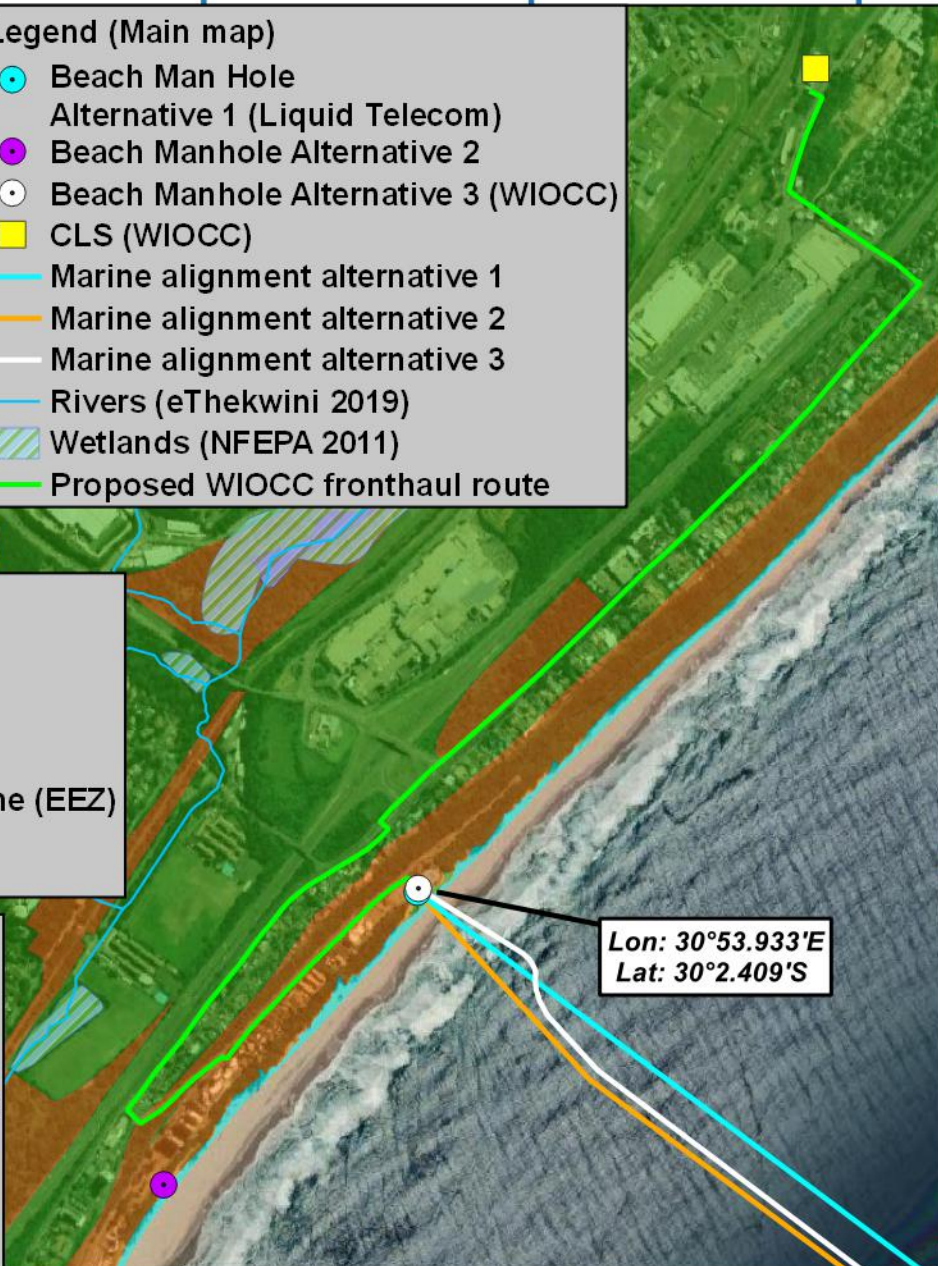
Legend (Locality map)

- Marine alignment
- Offshore Trunk line
- Territorial Waters of 12 nautical miles
- Exclusive Economic Zone (EEZ) of 200 nautical miles
- National boundary

Legend (Vegetation)

SANBI Vegmap (2018 Beta)

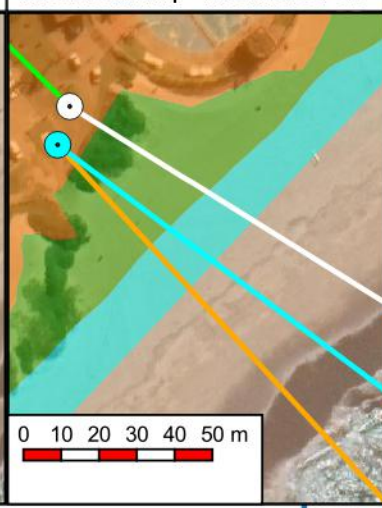
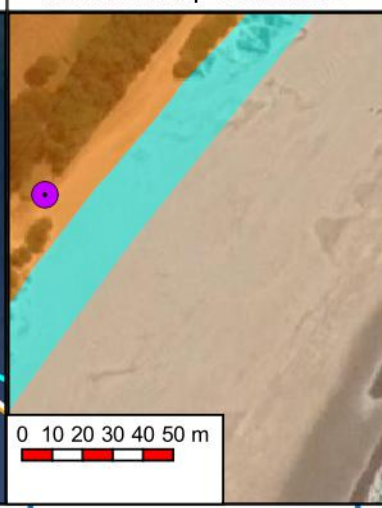
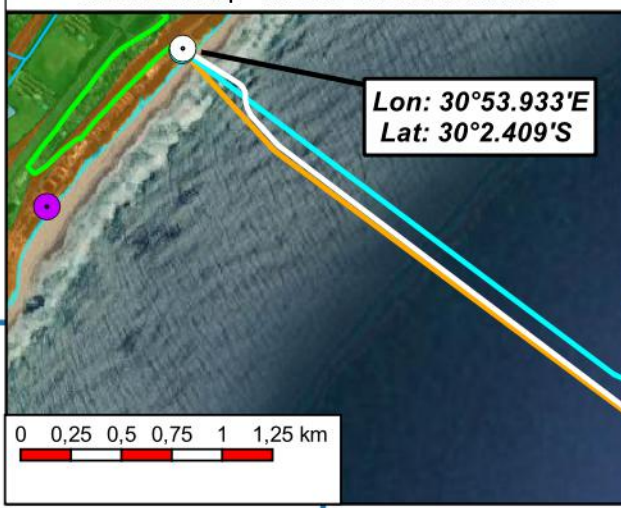
- KwaZulu-Natal
- Coastal Belt Grassland
- Northern Coastal Forest
- Subtropical Alluvial Vegetation
- Subtropical Seashore Vegetation



Inset Zoom Map - Offshore to BMH Alternatives

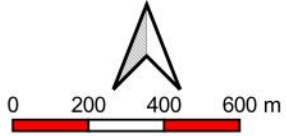
Inset Zoom Map - Alternative 2

Inset Zoom Map - Alternative 1 & 3



Mapping and layout by

For Giles Churchill



1:20000

when printed at A4 (297 x 210 mm)

Date of print: 30 Jul 2021

Co-Ordinate system
Projection: Transverse Mercator
Datum: Hartbeeshoek 1994
Ellipsoid: WGS84
Meridian: Lo31°
Units: Metres

Distance notes

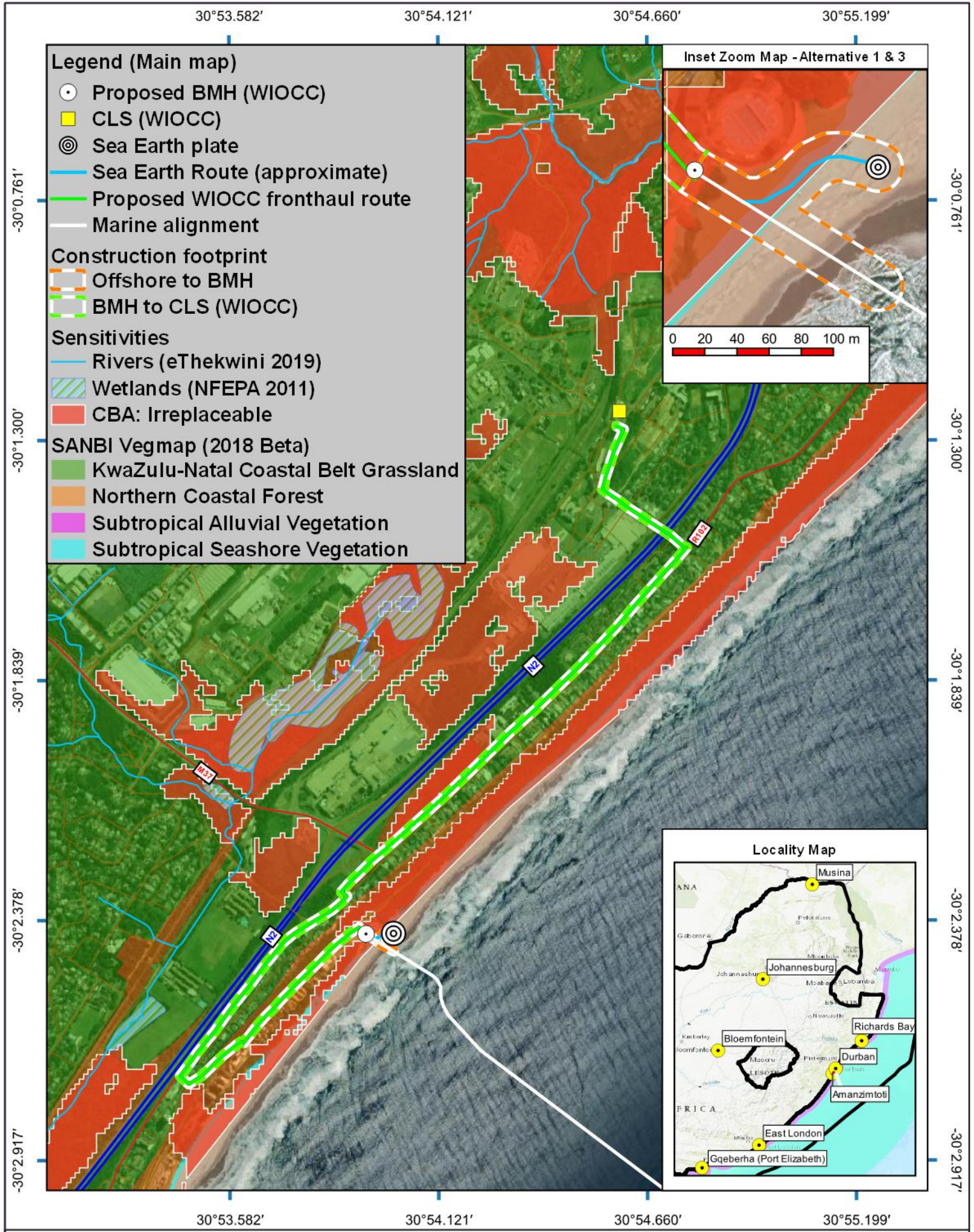
1 nautical mile = 1.852km

1km = 0.539957km

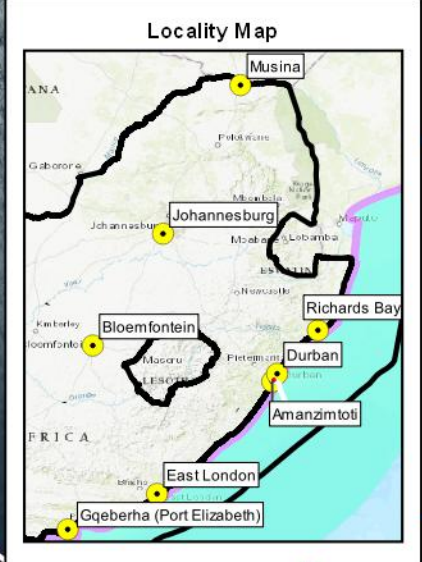
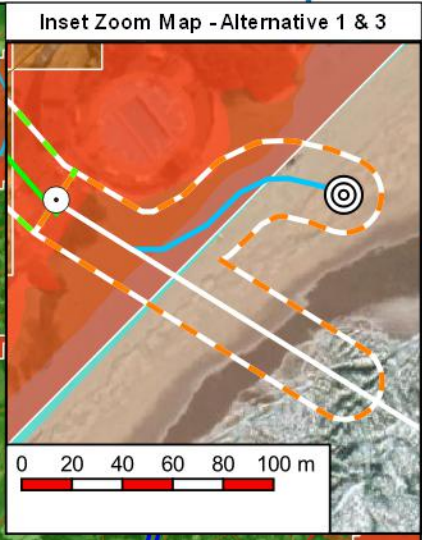
2AFRICA/GERA (East) Cable System

Amanzimtoti

Onshore alignment with alternatives, other points of interest and SANBI Vegmap (2018 beta)



- Legend (Main map)**
- Proposed BMH (WIOCC)
 - CLS (WIOCC)
 - ◎ Sea Earth plate
 - Sea Earth Route (approximate)
 - Proposed WIOCC fronthaul route
 - Marine alignment
- Construction footprint**
- Offshore to BMH
 - BMH to CLS (WIOCC)
- Sensitivities**
- Rivers (eThekweni 2019)
 - Wetlands (NFEPA 2011)
 - CBA: Irreplaceable
- SANBI Vegmap (2018 Beta)**
- KwaZulu-Natal Coastal Belt Grassland
 - Northern Coastal Forest
 - Subtropical Alluvial Vegetation
 - Subtropical Seashore Vegetation



30°53.582'

30°54.121'

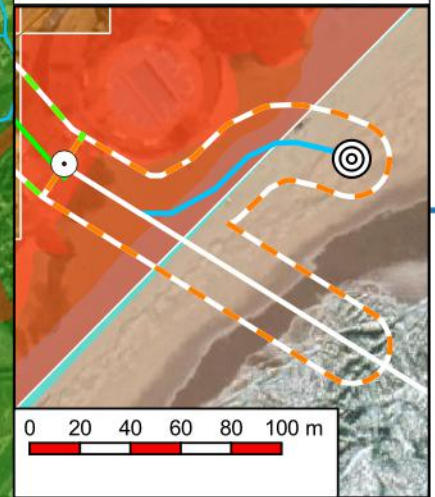
30°54.660'

30°55.199'

Legend (Main map)

- Proposed BMH (WIOCC)
- CLS (WIOCC)
- ⊙ Sea Earth plate
- Sea Earth Route (approximate)
- Proposed WIOCC fronthaul route
- Marine alignment
- Construction footprint
 - ▭ Offshore to BMH
 - ▭ BMH to CLS (WIOCC)
- Sensitivities
 - Rivers (eThekweni 2019)
 - ▨ Wetlands (NFEPA 2011)
- SANBI Vegmap (2018 Beta)
 - KwaZulu-Natal Coastal Belt Grassland
 - Northern Coastal Forest
 - Subtropical Alluvial Vegetation
 - Subtropical Seashore Vegetation

Inset Zoom Map - Alternative 1 & 3



-30°0.761'

-30°0.761'

-30°1.300'

-30°1.300'

-30°1.839'

-30°1.839'

-30°2.378'

-30°2.378'

-30°2.917'

-30°2.917'

30°53.582'

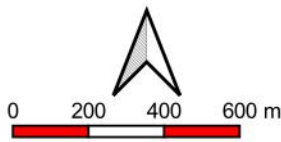
30°54.121'

30°54.660'

30°55.199'

Mapping and layout by

For Giles Churchill



1:20000

when printed at A4 (297 x 210 mm)

Date of print: 20 Jul 2021

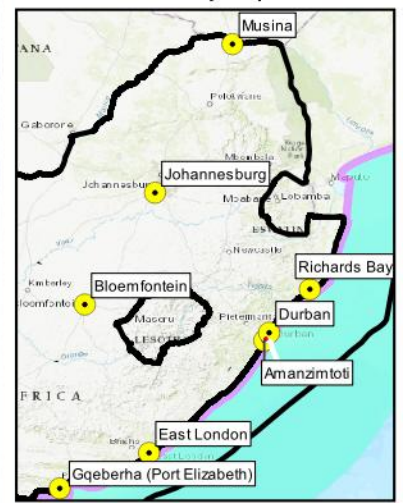
Co-Ordinate system
Projection: Transverse Mercator
Datum: Hartebeeshoek 1994
Ellipsoid: WGS84
Meridian: Lo31°
Units: Metres

Distance notes

1 nautical mile = 1.852km

1km = 0.539957km

Locality Map



2AFRICA/GERA (East) Cable System

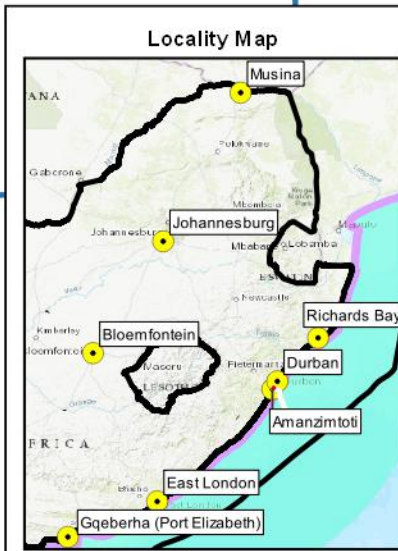
Amanzimtoti

**Landing Site with
Beach Man Hole Position,
Front Haul Alignment,
Sensitivities and
Construction footprint**

30°53 042'E 30°53 581'E 30°54 120'E 30°54 659'E

30°1 300'S
30°1 838'S
30°1 377'S
30°2 916'S
30°3 455'S

30°1 300'S
30°1 838'S
30°2 377'S
30°2 916'S
30°3 455'S

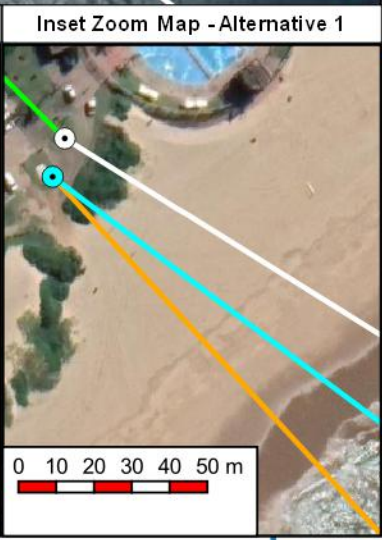
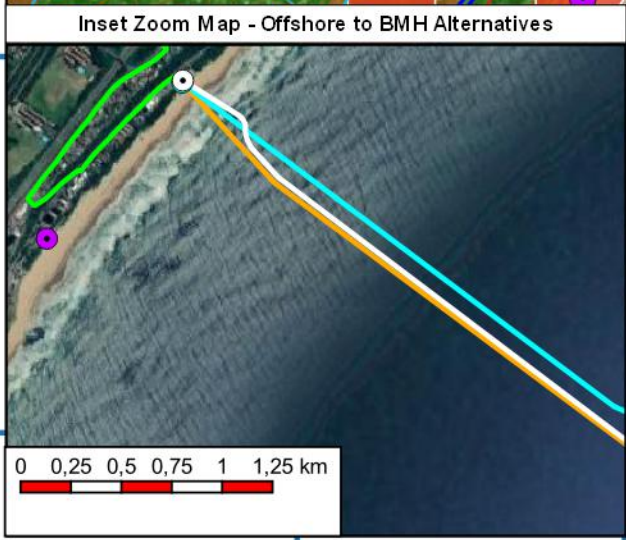
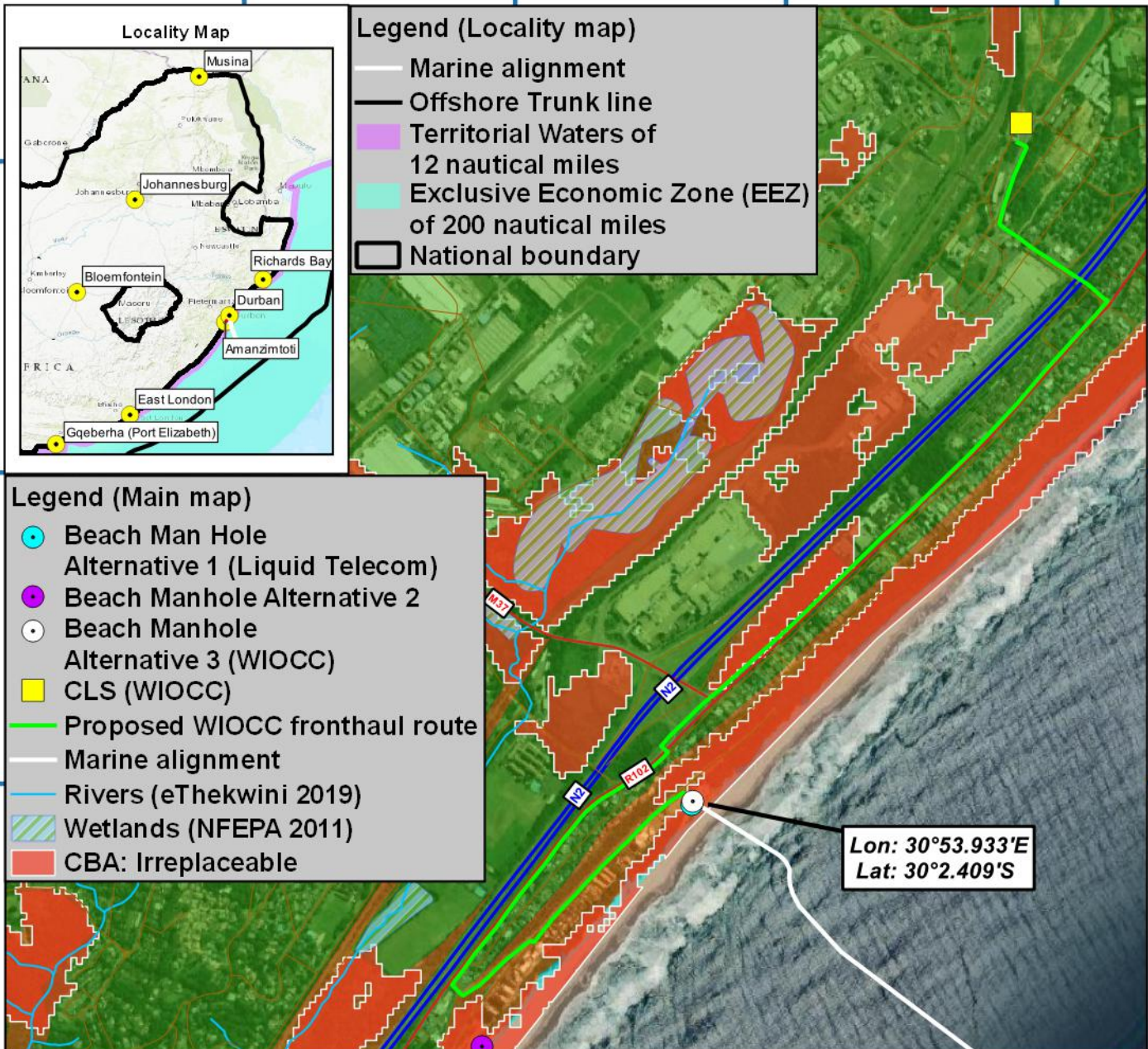


Legend (Locality map)

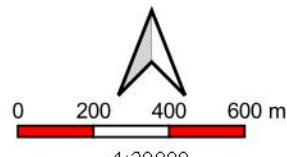
- Marine alignment
- Offshore Trunk line
- Territorial Waters of 12 nautical miles
- Exclusive Economic Zone (EEZ) of 200 nautical miles
- National boundary

Legend (Main map)

- Beach Man Hole Alternative 1 (Liquid Telecom)
- Beach Manhole Alternative 2
- Beach Manhole Alternative 3 (WIOCC)
- CLS (WIOCC)
- Proposed WIOCC fronthaul route
- Marine alignment
- Rivers (eThekweni 2019)
- ▨ Wetlands (NFEPA 2011)
- CBA: Irreplaceable



30°53 042'E 30°53 581'E 30°54 120'E 30°54 659'E



when printed at A4 (297 x 210 mm)
Date of print: 30 Jul 2021

Co-Ordinate system
Projection: Transverse Mercator
Datum: Hartbeeshoek 1994
Ellipsoid: WGS84
Meridian: Lo31°
Units: Metres

Distance notes
1 nautical mile = 1.852km
1km = 0.539957km

2AFRICA/GERA (East) Cable System

Amanzimtoti

Onshore alignment with alternatives, landing point and other points of interest

Mapping and layout by

For Giles Churchill

30°53.932'

30°53.959'

30°53.986'

30°54.013'

-30°2.351'

-30°2.378'

-30°2.405'

-30°2.432'

-30°2.459'

-30°2.351'

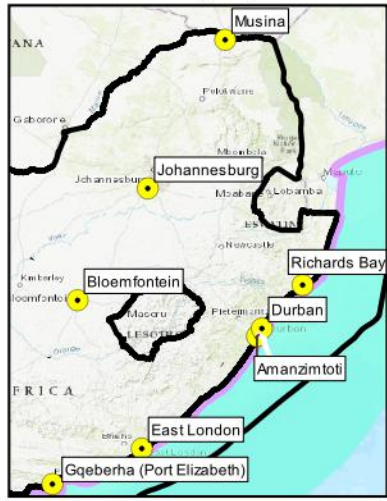
-30°2.378'

-30°2.405'

-30°2.432'

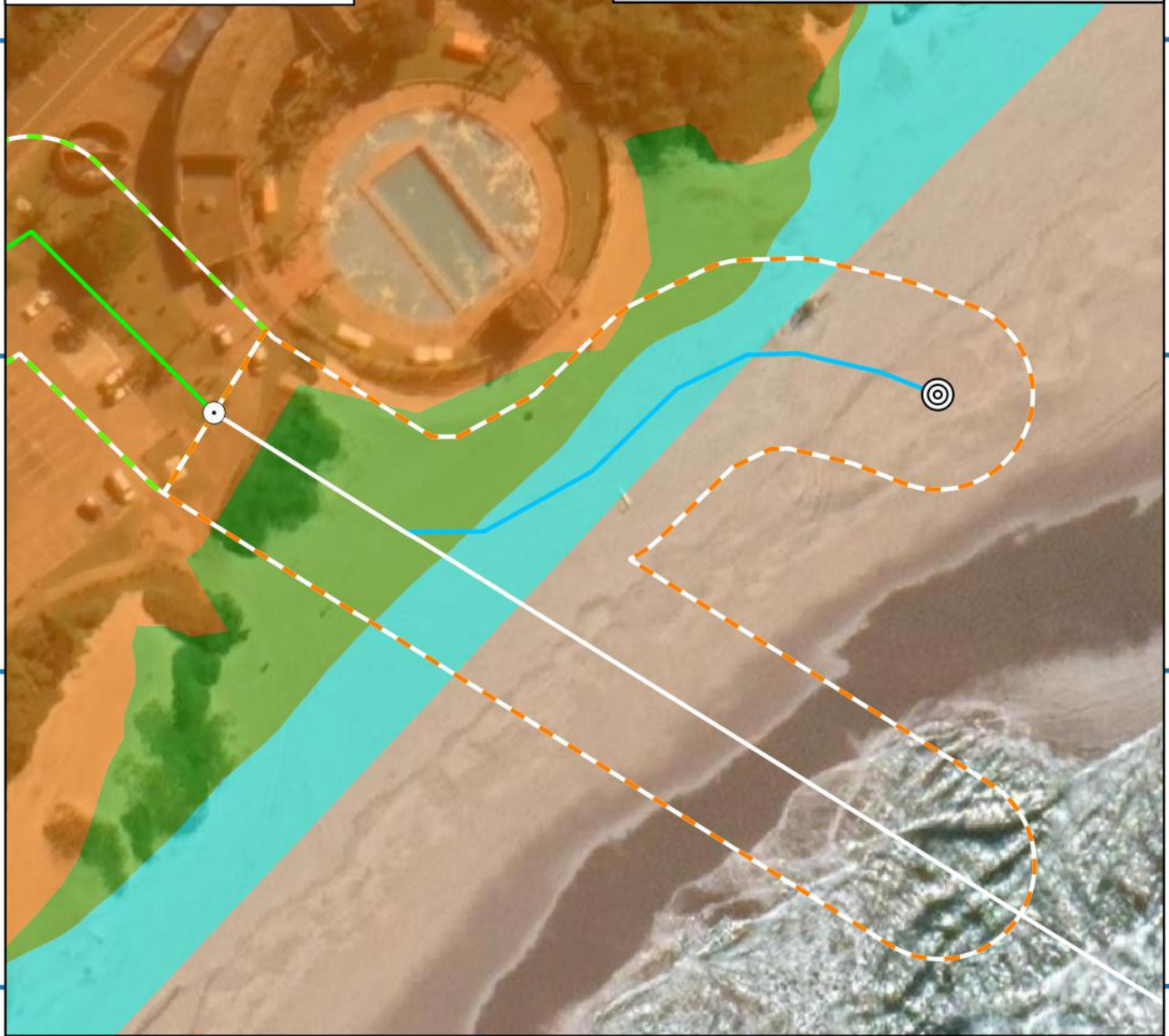
-30°2.459'

Locality Map



Legend (Main map)

- Proposed BMH (WIOCC)
- ◎ Sea Earth plate
- Sea Earth Route (approximate)
- Marine alignment
- Construction footprint**
- ▭ Offshore to BMH
- ▭ BMH to CLS (WIOCC)
- Sensitivities**
- SANBI Vegmap (2018 Beta)**
- KwaZulu-Natal Coastal Belt Grassland
- Northern Coastal Forest
- Subtropical Seashore Vegetation



30°53.932'

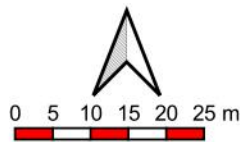
30°53.959'

30°53.986'

30°54.013'

Mapping and layout by

For Giles Churchill



when printed at A4 (297 x 210 mm)

Date of print: 22 Jul 2021

Co-Ordinate system
Projection: Transverse Mercator
Datum: Hartbeeshoek 1994
Ellipsoid: WGS84
Meridian: Lo31°
Units: Metres

Distance notes

1 nautical mile = 1.852km

1km = 0.539957km

**2AFRICA/GERA (East)
Cable System**

Amanzimtoti

**Landing Site with
Beach Man Hole Position,
Front Haul Alignment,
Sensitivities and
Construction footprint**