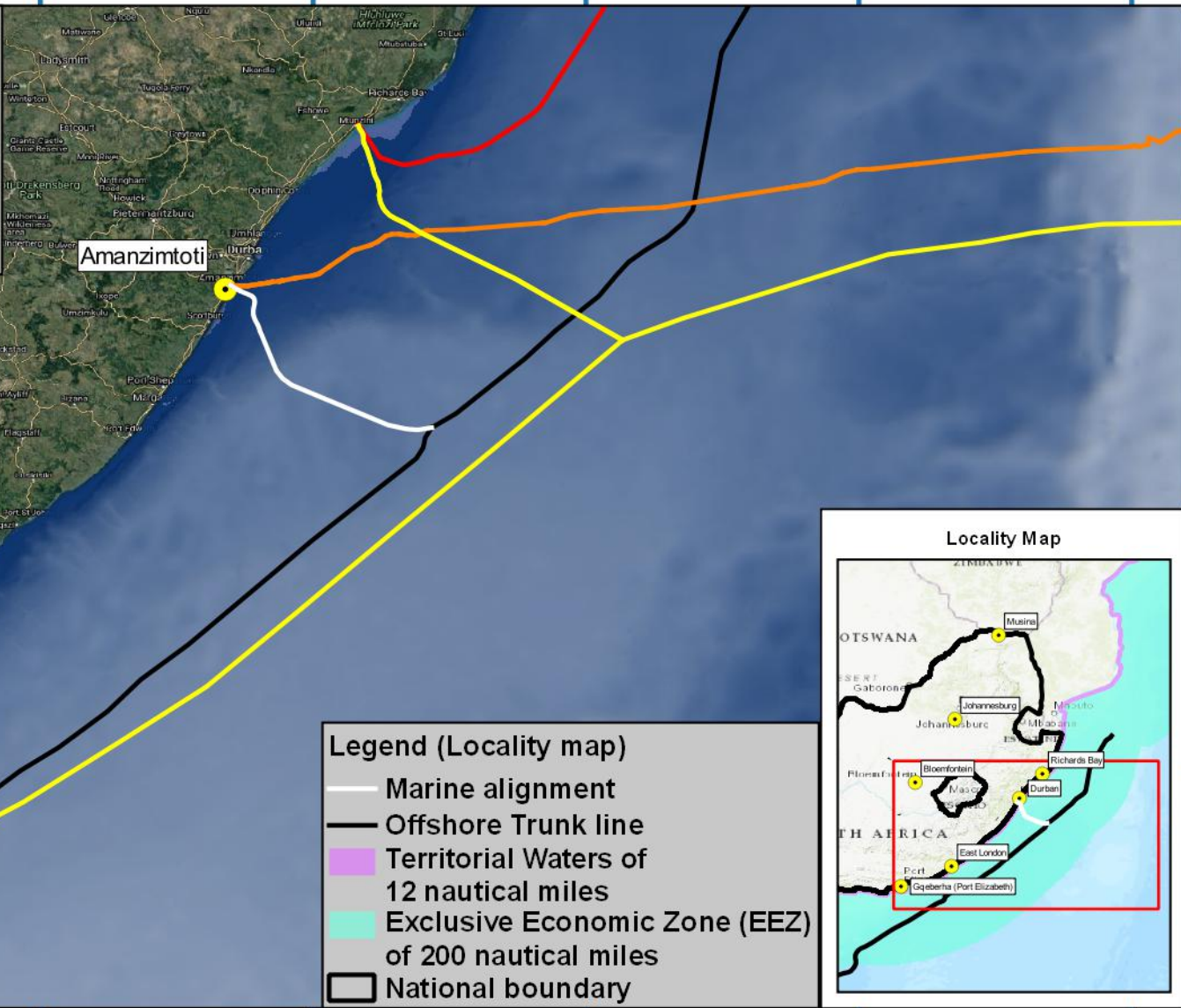


25°54.374'E 27°45.401'E 29°36.428'E 31°27.455'E 33°18.481'E 35°9.508'E 37°0.535'E

**Legend (Main map)**

- Marine alignment
- Offshore Trunk line
- 2AFRICA Marine alignment (PE branch)
- METISS (existing)
- South Africa Far East alignment
- South Africa Far East alignment (EASSy)



29°36.428'S

31°27.455'S

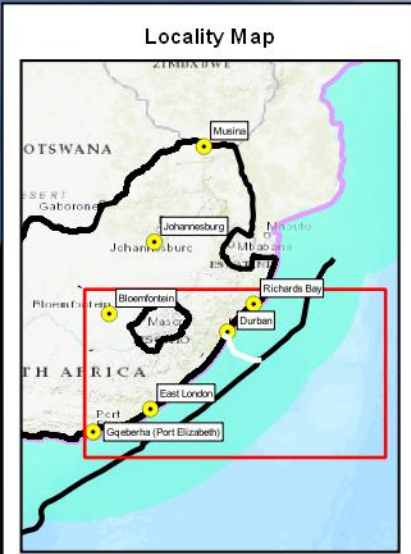
33°18.481'S

29°36.428'S

31°27.455'S

33°18.481'S

25°54.374'E 27°45.401'E 29°36.428'E 31°27.455'E 33°18.481'E 35°9.508'E 37°0.535'E

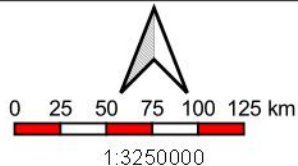


**Legend (Locality map)**

- Marine alignment
- Offshore Trunk line
- Territorial Waters of 12 nautical miles
- Exclusive Economic Zone (EEZ) of 200 nautical miles
- National boundary

Mapping and layout by

For Giles Churchill



when printed at A4 (210 x 297 mm)  
Date of print: 03 Sep 2021

Co-Ordinate system  
Projection: Unprojected  
(Geographic)  
Ellipsoid: WGS84  
Units: Decimal Degrees

Distance notes  
1 nautical mile = 1.852km  
1km = 0.539957km

**2AFRICA/GERA (East) Cable System**

**Amanzimtoti**

**Offshore alignment with 2AFRICA/GERA (East) Trunk line, METISS and SAFE Alignments**

30°53.447'E

30°53.919'E

30°54.390'E

30°54.862'E

30°1.098'S

30°1.098'S

30°1.569'S

30°1.569'S

30°2.041'S

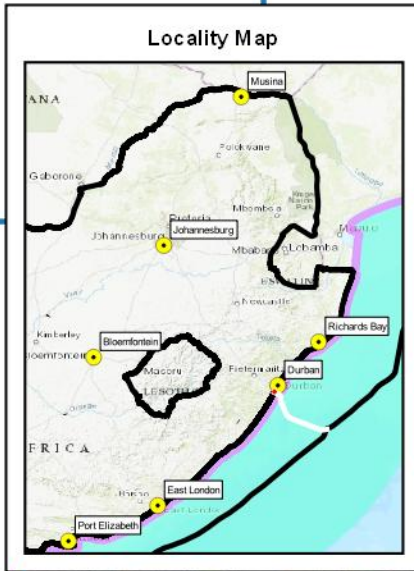
30°2.041'S

30°2.512'S

30°2.512'S

30°2.984'S

30°2.984'S



### Legend (Locality map)

- Marine alignment
- Offshore Trunk line
- Territorial Waters of 12 nautical miles
- Exclusive Economic Zone (EEZ) of 200 nautical miles
- National boundary



### Legend (Main map)

- Beach Man Hole Alternative 1 (Liquid Telecom)
- Beach Manhole Alternative 2
- Beach Manhole Alternative 3 (WIOCC)
- CLS (WIOCC)
- Proposed WIOCC fronthaul route
- Marine route alternatives**
- Marine alignment alternative 1
- Marine alignment alternative 2
- Marine alignment alternative 3
- Rivers (eThekweni 2019)
- Wetlands (NFEPA 2011)

30°53.447'E

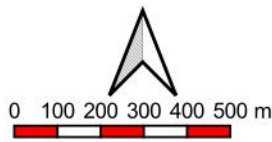
30°53.919'E

30°54.390'E

30°54.862'E

Mapping and layout by

For Giles Churchill



1:17500

when printed at A4 (297 x 210 mm)

Date of print: 08 Mar 2021

Co-Ordinate system  
Projection: Unprojected  
(Geographic)  
Ellipsoid: WGS84  
Units: Decimal Degrees

**2AFRICA/GERA (East)  
Cable System**

**Amanzimtoti**

Distance notes

1 nautical mile = 1.852km

1km = 0.539957km

**Onshore alignment  
with wetlands, rivers,  
alternatives and  
other points of interest**

30°47.352'E      32°11.323'E      33°35.293'E      34°59.264'E

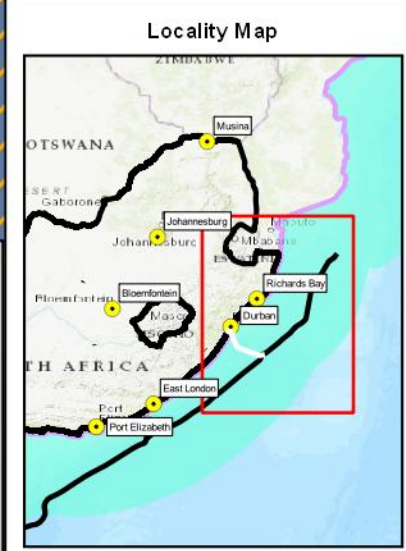
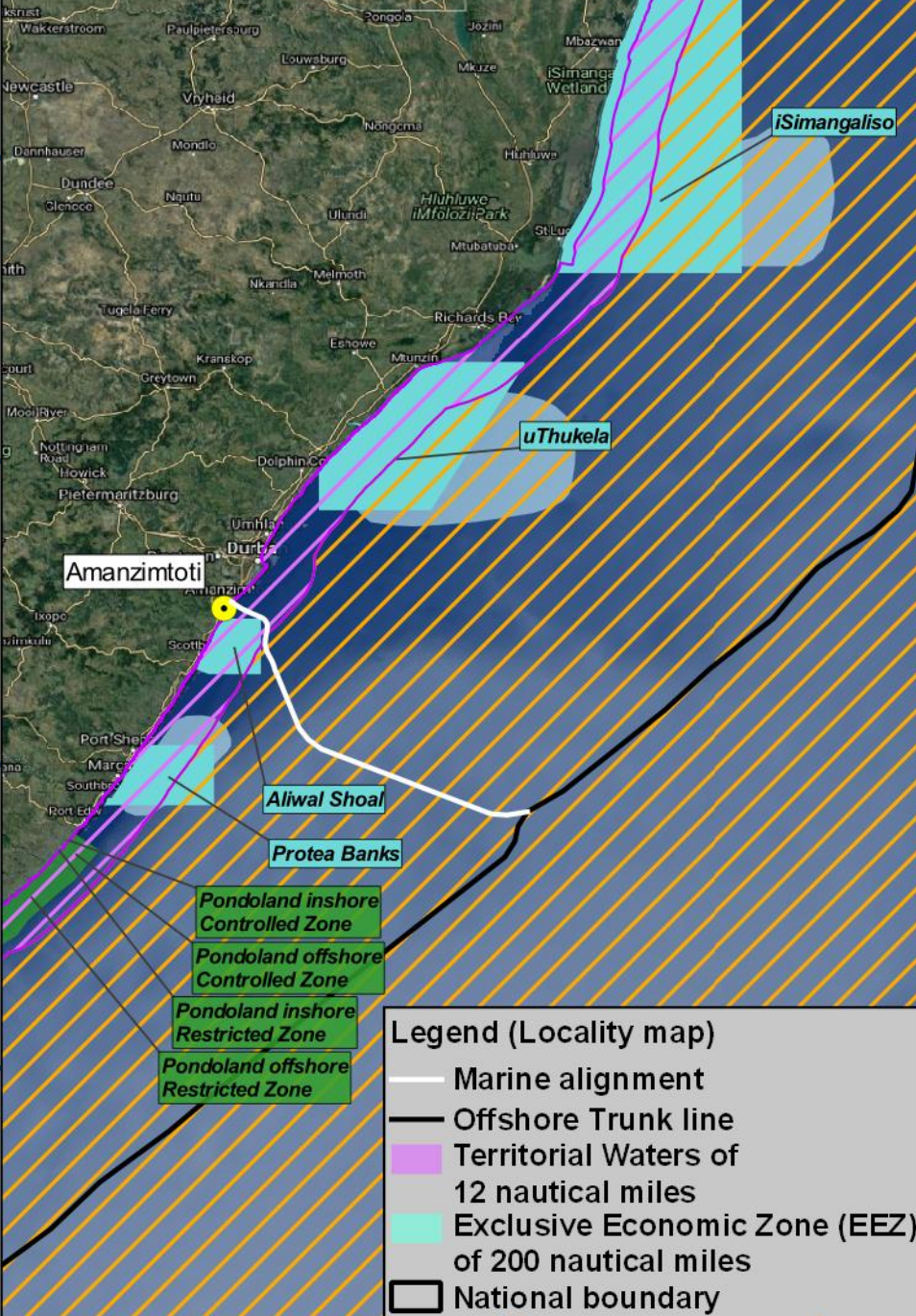
**Legend (Main map)**

- Marine alignment
- Offshore Trunk line
- ▨ Territorial Waters of 12 nautical miles
- ▨ Exclusive Economic Zone (EEZ) of 200 nautical miles
- ▨ Marine Protected Areas (as gazetted 2019)
- ▨ Marine Protected Areas (SANBI: 2011)
- ▨ Focus areas for Offshore Protection

**Notes:**  
The extension line indicating the Territorial Waters (12 nautical miles) and Exclusive Economic Zone (200 nautical miles) between South Africa and Mozambique is approximate.

26°35.441'S  
27°59.411'S  
29°23.382'S  
30°47.352'S  
32°11.323'S

26°35.441'S  
27°59.411'S  
29°23.382'S  
30°47.352'S  
32°11.323'S

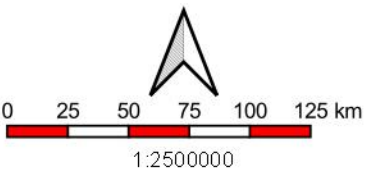


**Legend (Locality map)**

- Marine alignment
- Offshore Trunk line
- ▨ Territorial Waters of 12 nautical miles
- ▨ Exclusive Economic Zone (EEZ) of 200 nautical miles
- ▭ National boundary

30°47.352'E      32°11.323'E      33°35.293'E      34°59.264'E

Mapping and layout by **S3 Technologies** For Giles Churchill **acer AFRICA**



Co-Ordinate system  
Projection: Unprojected  
(Geographic)  
Ellipsoid: WGS84  
Units: Decimal Degrees

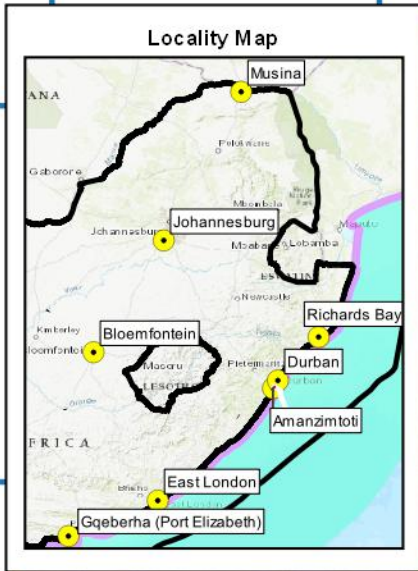
**2AFRICA/GERA (East) Cable System**  
**Amanzimtoti**  
**Offshore Cable Alignment from trunkline, with MPAs**

**Distance notes**  
1 nautical mile = 1.852km  
1km = 0.539957km

30°53.904' 30°53.940' 30°53.976' 30°54.013' 30°54.049'

-30°2.314'  
-30°2.351'

-30°2.314'  
-30°2.351'



**Legend (Main map)**

- Proposed BMH (WIOCC)
- ⊙ Sea Earth plate
- Sea Earth Route (approximate)
- Marine alignment
- ⊠ No-go areas
- The construction corridor on the beach will be limited to 50 m each side of the cable
- Trench from BMH to CLS 1 m in width, however a construction corridor of 10 m (5 m either side of the cable)

**Sensitivities**

**SANBI Vegmap (2018 Beta)**

- KwaZulu-Natal Coastal Belt Grassland
- Northern Coastal Forest
- Subtropical Seashore Vegetation

-30°2.387'  
-30°2.424'

-30°2.387'  
-30°2.424'

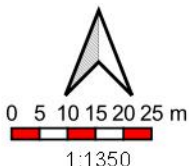
-30°2.460'

-30°2.460'

30°53.904' 30°53.940' 30°53.976' 30°54.013' 30°54.049'

Mapping and layout by

For Giles Churchill



when printed at A4 (297 x 210 mm)  
Date of print: 14 Sep 2021

Co-Ordinate system  
Projection: Transverse Mercator  
Datum: Hartbeeshoek 1994  
Ellipsoid: WGS84  
Meridian: Lo31°  
Units: Metres

**Distance notes**

1 nautical mile = 1.852km  
1km = 0.539957km

**2AFRICA/GERA (East) Cable System**

**Amanzimtoti**

**Landing Site with Beach Man Hole Position, Front Haul Alignment, Sensitivities and Construction footprint**

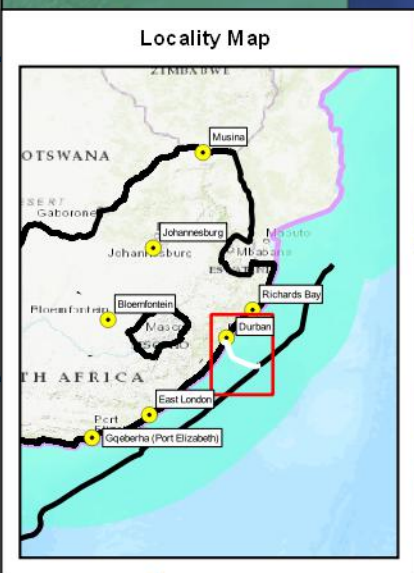
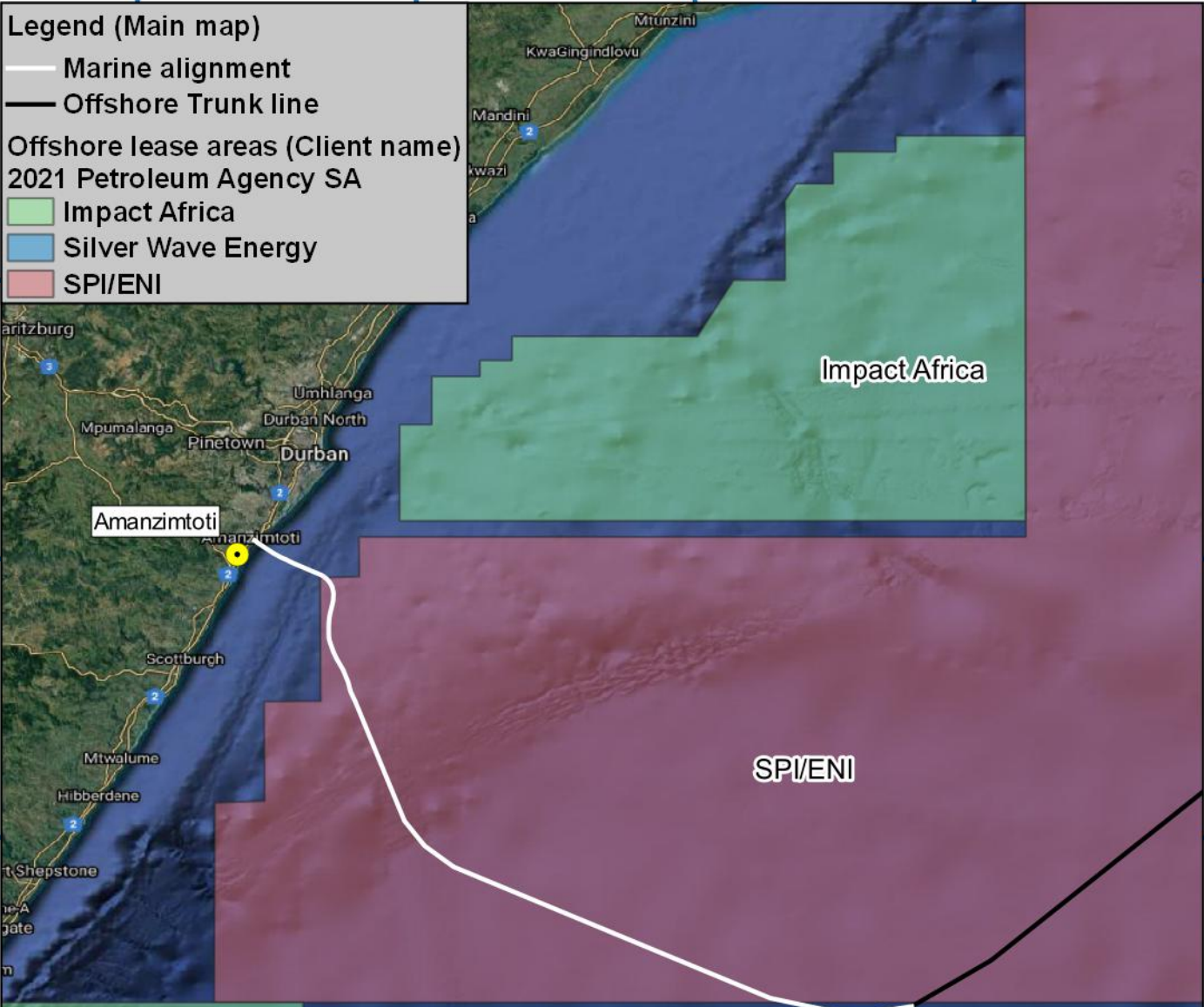
30°39.409' 31°14.115' 31°48.821' 32°23.526'

**Legend (Main map)**

- Marine alignment
- Offshore Trunk line

**Offshore lease areas (Client name)**  
2021 Petroleum Agency SA

- Impact Africa
- Silver Wave Energy
- SPI/ENI



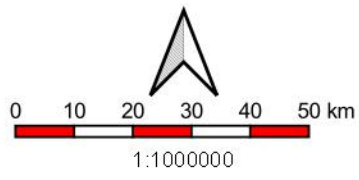
**Legend (Locality map)**

- Marine alignment
- Offshore Trunk line
- Territorial Waters of 12 nautical miles
- Exclusive Economic Zone (EEZ) of 200 nautical miles
- National boundary

30°39.409' 31°14.115' 31°48.821' 32°23.526'

Mapping and layout by **S3 Technologies** Spatial Systems Solutions

For Giles Churchill **acer AFRICA**



Co-Ordinate system  
Projection: Unprojected  
(Geographic)  
Ellipsoid: WGS84  
Units: Decimal Degrees

Distance notes  
1 nautical mile = 1.852km  
1km = 0.539957km

**2AFRICA/GERA (East) Cable System**

**Amanzimtoti**

**Offshore Cable Alignment from trunk line with Offshore Lease Areas**

-29°29.997'

-30°4.703'

-30°39.409'

-31°14.115'

-31°48.821'

30°48.736'E 30°50.493'E 30°52.251'E 30°54.008'E 30°55.765'E 30°57.523'E

29°56.015'S  
29°57.773'S  
29°59.530'S  
30°1.287'S  
30°3.045'S  
30°4.802'S  
30°6.559'S  
30°8.317'S

29°56.015'S  
29°57.773'S  
29°59.530'S  
30°1.287'S  
30°3.045'S  
30°4.802'S  
30°6.559'S  
30°8.317'S

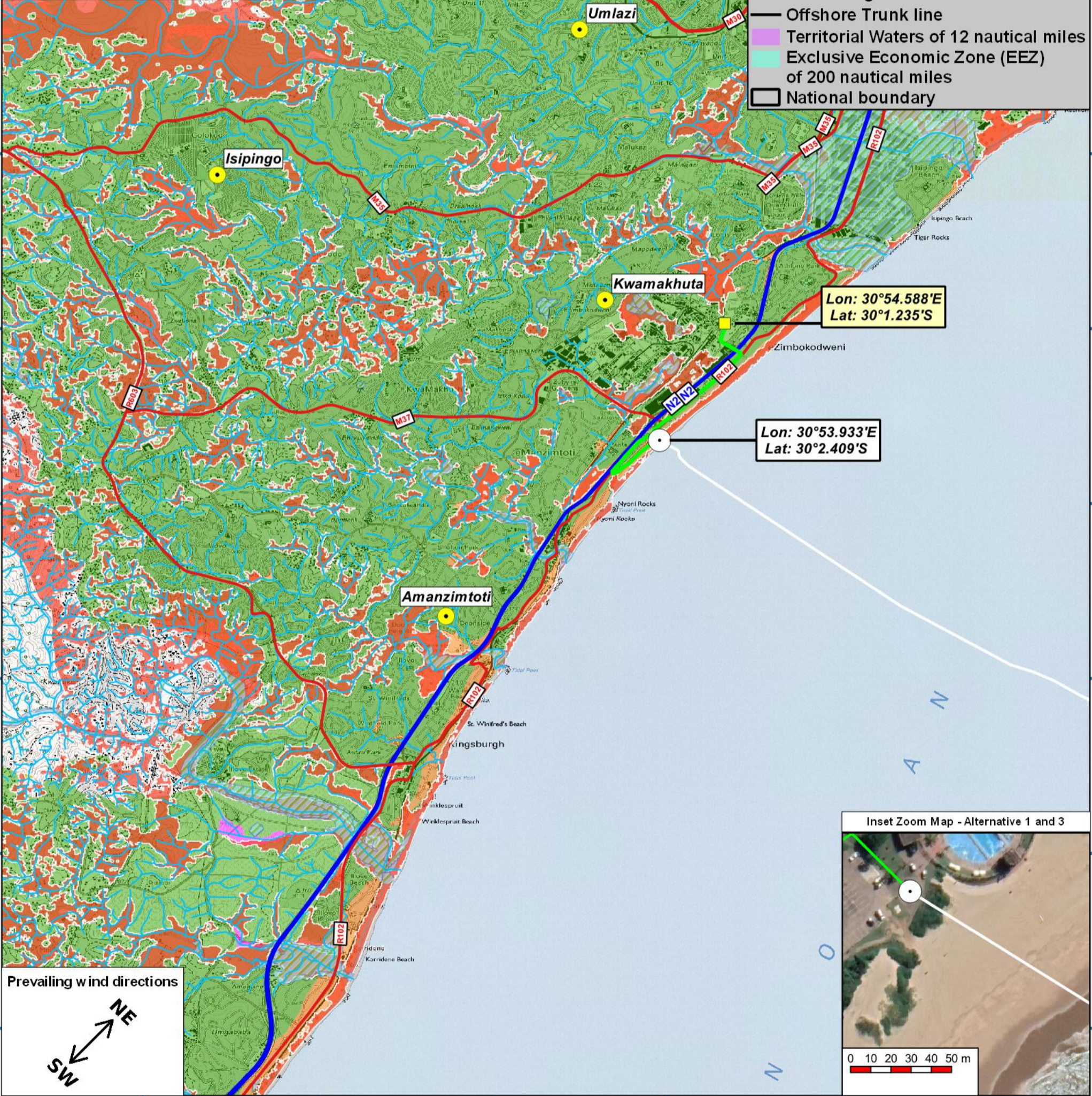
**Legend (Main map)**

- Proposed BMH (WIOCC)
- CLS (WIOCC)
- Proposed WIOCC fronthaul route
- Marine alignment
- Rivers (eThekweni 2019)
- Wetlands (NFEPA 2011)
- Critical Biodiversity Areas (CBA)**
  - CBA: Irreplaceable
  - CBA: Optimal
- SANBI Vegmap (2018 Beta)**
  - KwaZulu-Natal Coastal Belt Grassland
  - Northern Coastal Forest
  - Subtropical Alluvial Vegetation
  - Subtropical Seashore Vegetation

**Locality Map**

**Legend (Locality map)**

- Marine alignment
- Offshore Trunk line
- Territorial Waters of 12 nautical miles
- Exclusive Economic Zone (EEZ) of 200 nautical miles
- National boundary



**Prevailing wind directions**

**Inset Zoom Map - Alternative 1 and 3**

Mapping and layout by  
**S3 Technologies**  
Spatial Systems Solutions

For Giles Churchill  
**acer**  
AFRICA

0 0,5 1 1,5 2 2,5 km  
1:50000  
when printed at A3 (420 x 297 mm)  
Date of print: 27 Jul 2021

Co-Ordinate system  
Projection: Unprojected (Geographic)  
Ellipsoid: WGS84  
Units: Decimal Degrees  
Main map grid coordinates  
Degrees and Decimal Minutes  
Distance notes  
1 nautical mile = 1.852km  
1km = 0.539957km

**2AFRICA/GERA (East) Cable System**  
**Amanzimtoti**  
**Locality Map**



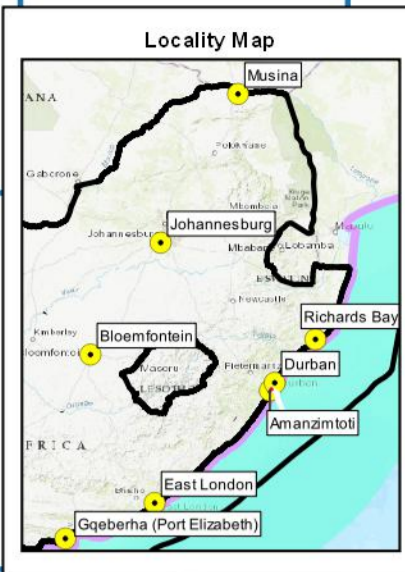




30°53 313'E 30°53 582'E 30°53 852'E 30°54 121'E 30°54 391'E 30°54 660'E 30°54 930'E

30°1 301'S  
30°1 570'S  
30°1 840'S  
30°2 109'S  
30°2 379'S  
30°2 648'S  
30°2 918'S

30°1 301'S  
30°1 570'S  
30°1 840'S  
30°2 109'S  
30°2 379'S  
30°2 648'S  
30°2 918'S

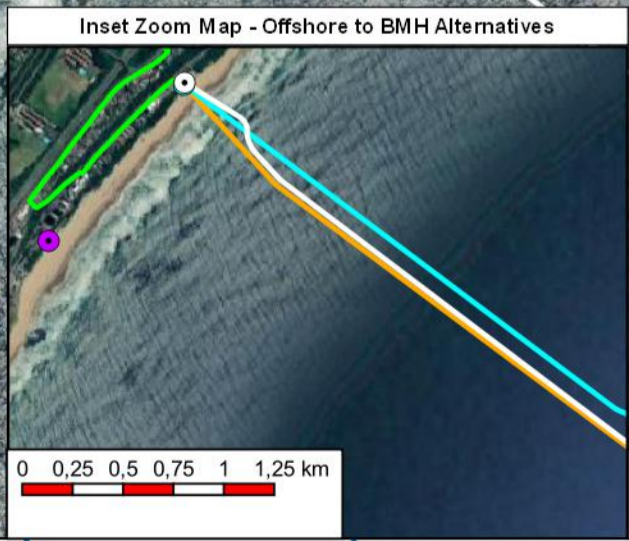
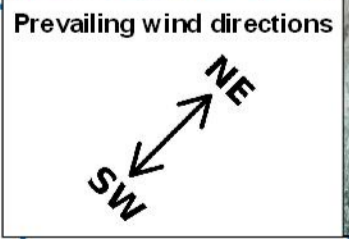
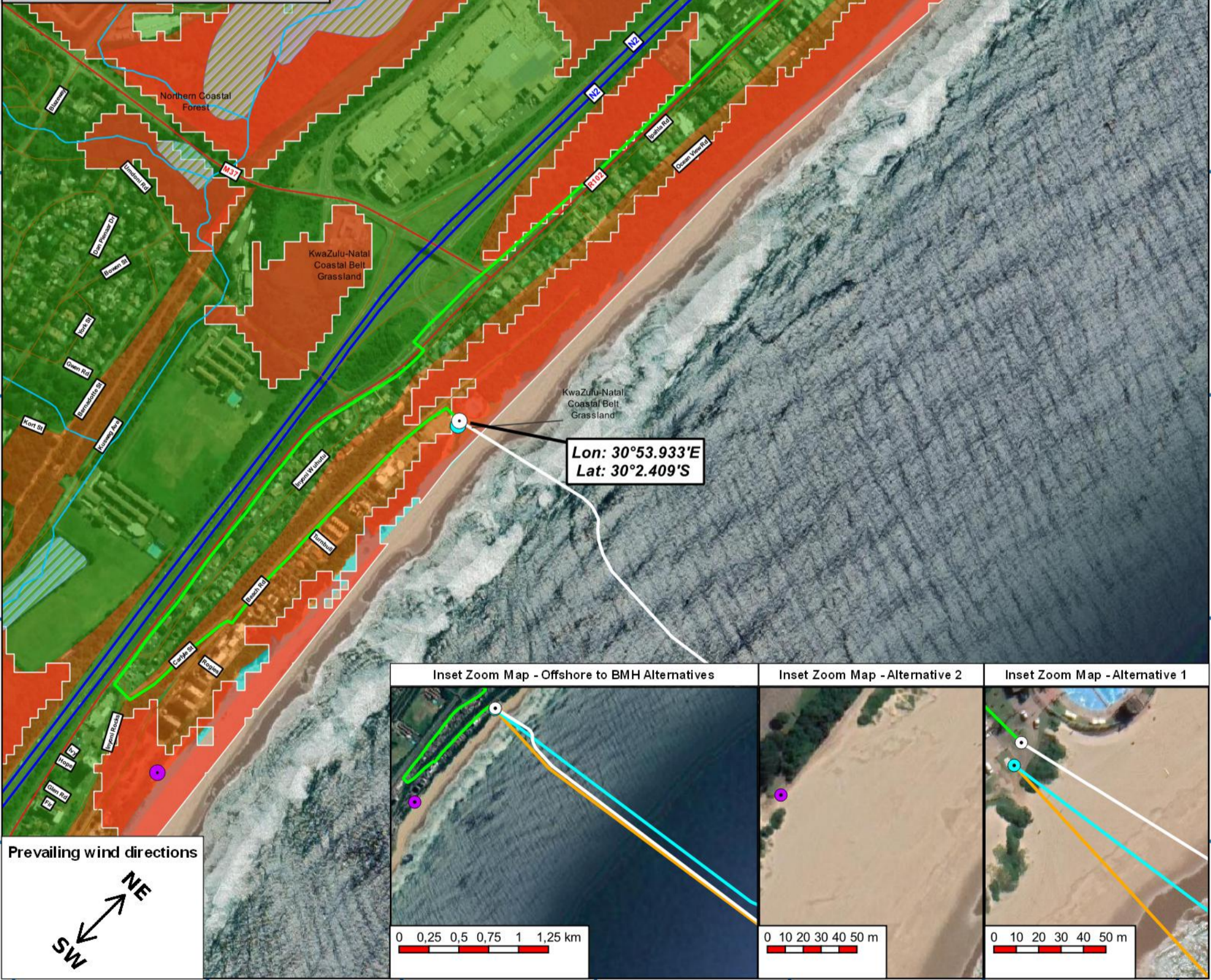


**Legend (Locality map)**

- Marine alignment
- Offshore Trunk line
- Territorial Waters of 12 nautical miles
- Exclusive Economic Zone (EEZ) of 200 nautical miles
- National boundary

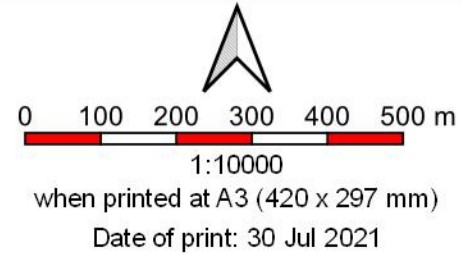
**Legend (Main map)**

- Beach Manhole Alternative 1 (Liquid Telecom)
- Beach Manhole Alternative 2
- Beach Manhole Alternative 3 (WIOCC)
- CLS (WIOCC)
- Proposed WIOCC fronthaul route
- Marine alignment
- Rivers (eThekweni 2019)
- Wetlands (NFEPA 2011)
- Critical Biodiversity Areas (CBA)
- CBA: Irreplaceable



Mapping and layout by  
**S3 Technologies**  
Spatial Systems Solutions

For Giles Churchill  
**acer**  
AFRICA



Co-Ordinate system  
Projection: Transverse Mercator  
Datum: Hartbeeshoek 1994  
Ellipsoid: WGS84  
Meridian: Lo31°  
Units: Metres

Distance notes  
1 nautical mile = 1.852km  
1km = 0.539957nm

**2AFRICA/GERA (East) Cable System**  
**Amanzimtoti**  
**Onshore alignment with alternatives, landing point and other points of interest**

30°53.042'E 30°53.581'E 30°54.120'E 30°54.659'E

30°1.299'S  
30°1.838'S

30°1.299'S  
30°1.838'S

30°2.377'S

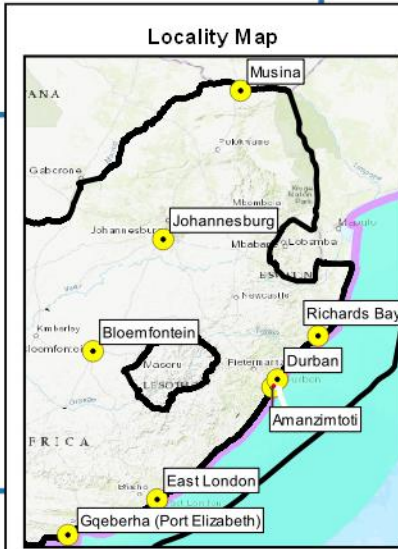
30°2.377'S

30°2.916'S

30°2.916'S

30°3.455'S

30°3.455'S



### Legend (Main map)

- Beach Man Hole
- Beach Manhole Alternative 2
- Beach Manhole Alternative 3 (WIOCC)
- CLS (WIOCC)
- Marine alignment alternative 1
- Marine alignment alternative 2
- Marine alignment alternative 3
- Rivers (eThekweni 2019)
- Wetlands (NFEPA 2011)
- Proposed WIOCC fronthaul route

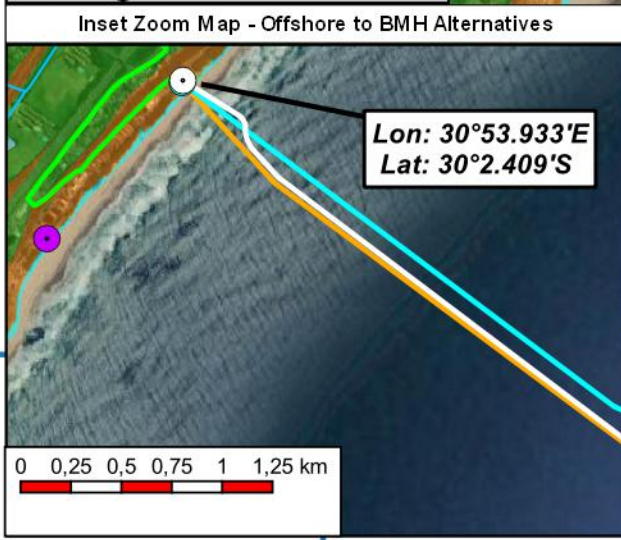
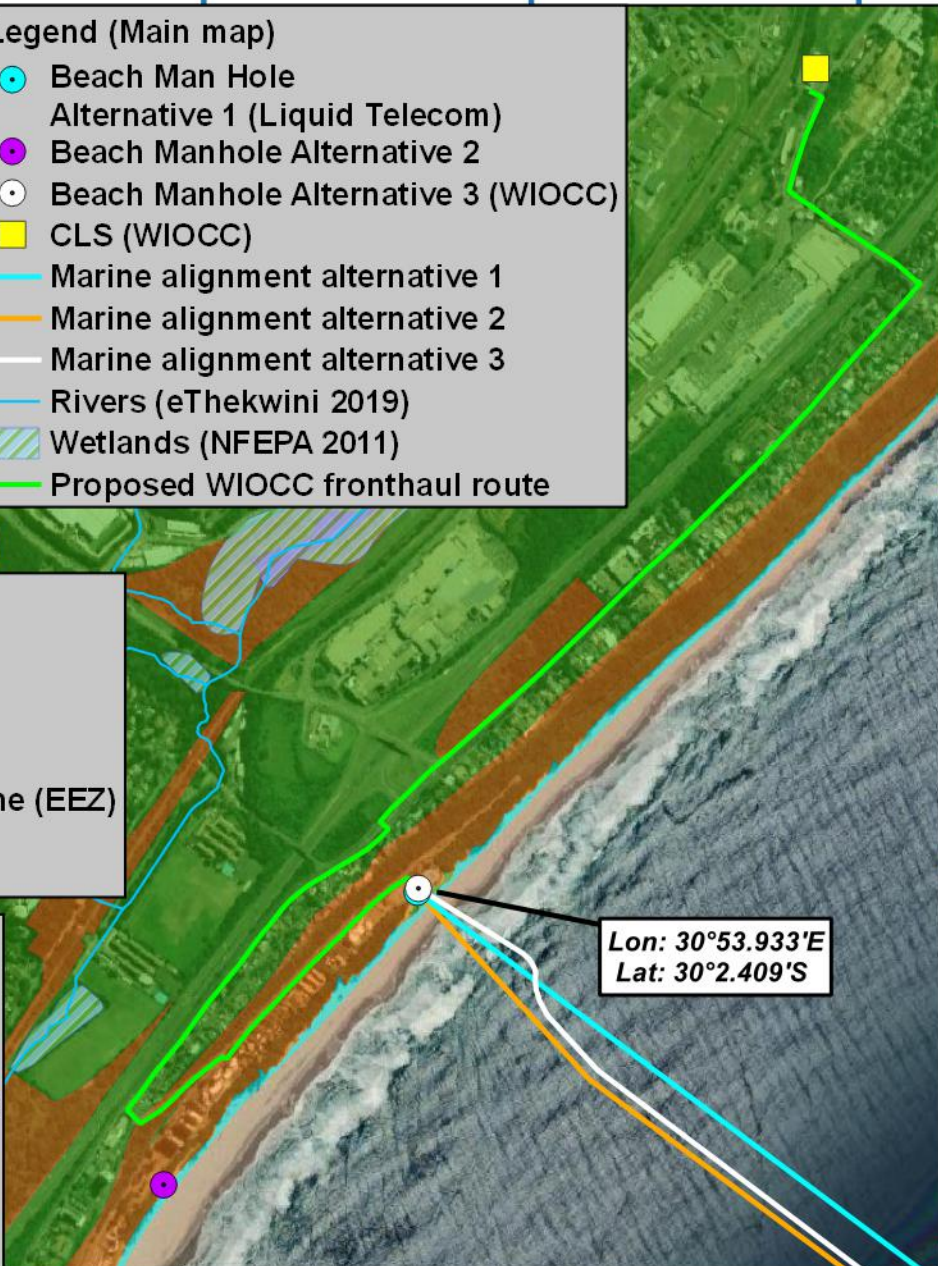
### Legend (Locality map)

- Marine alignment
- Offshore Trunk line
- Territorial Waters of 12 nautical miles
- Exclusive Economic Zone (EEZ) of 200 nautical miles
- National boundary

### Legend (Vegetation)

SANBI Vegmap (2018 Beta)

- KwaZulu-Natal
- Coastal Belt Grassland
- Northern Coastal Forest
- Subtropical Alluvial Vegetation
- Subtropical Seashore Vegetation



30°53.042'E 30°53.581'E 30°54.120'E 30°54.659'E

Mapping and layout by **S3 Technologies** (Spatial Systems Solutions)

For Giles Churchill **acer AFRICA**

Scale bar: 0 200 400 600 m

1:20000

when printed at A4 (297 x 210 mm)

Date of print: 30 Jul 2021

Co-Ordinate system  
Projection: Transverse Mercator  
Datum: Hartbeeshoek 1994  
Ellipsoid: WGS84  
Meridian: Lo31°  
Units: Metres

**2AFRICA/GERA (East) Cable System**

**Amanzimtoti**

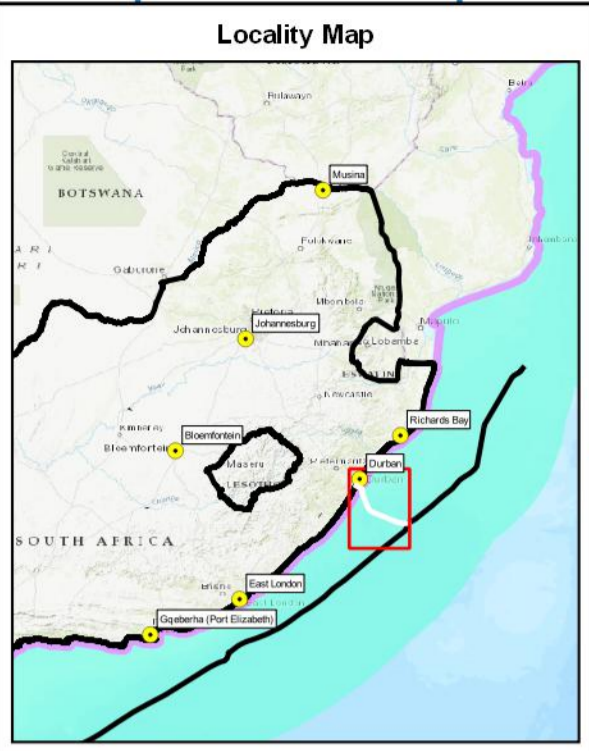
Onshore alignment with alternatives, other points of interest and SANBI Vegmap (2018 beta)

Distance notes  
1 nautical mile = 1.852km  
1km = 0.539957km

30°56.559'E 31°11.412'E 31°26.264'E 31°41.117'E 31°55.969'E 32°10.822'E

**Legend (Main map)**

- Marine alignment
- Offshore Trunk line
- - - Offshore cable corridor – 0,5 km (250 m each side)

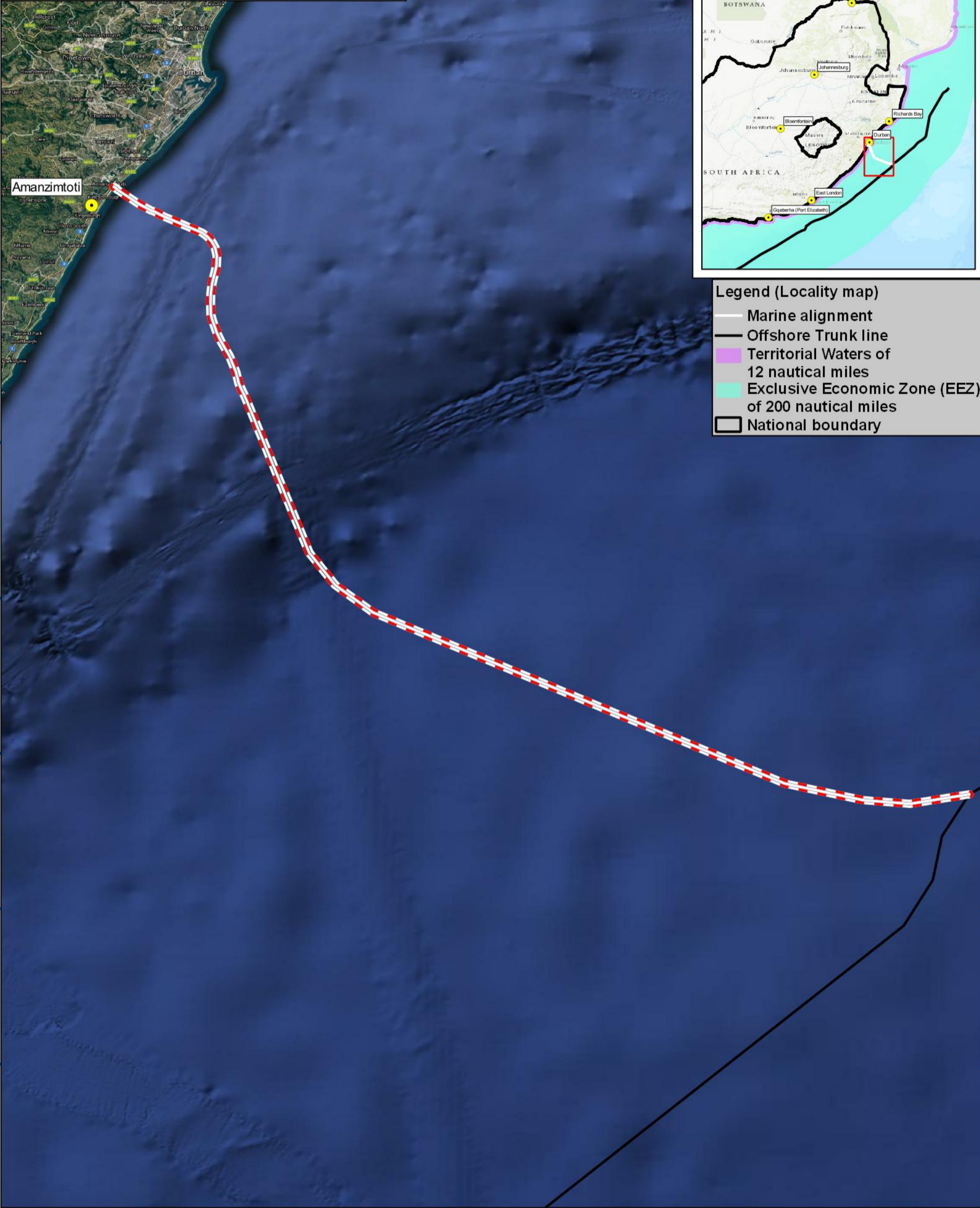


**Legend (Locality map)**

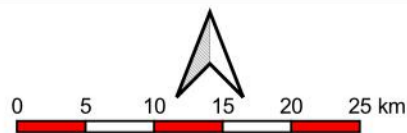
- Marine alignment
- Offshore Trunk line
- Territorial Waters of 12 nautical miles
- Exclusive Economic Zone (EEZ) of 200 nautical miles
- National boundary

29°42.297'S 29°57.150'S 30°12.002'S 30°26.855'S 30°41.707'S 30°56.559'S 31°11.412'S 31°26.264'S

29°42.297'S 29°57.150'S 30°12.002'S 30°26.855'S 30°41.707'S 30°56.559'S 31°11.412'S 31°26.264'S



30°56.559'E 31°11.412'E 31°26.264'E 31°41.117'E 31°55.969'E 32°10.822'E



1:425000  
when printed at A3 (420 x 297 mm)  
Date of print: 30 Aug 2021

Co-Ordinate system  
Projection: Unprojected (Geographic)  
Ellipsoid: WGS84  
Units: Decimal Degrees

Distance notes  
1 nautical mile = 1.852km  
1km = 0.539957nm

**2AFRICA/GERA (East) Cable System**

**Amanzimtoti**

**Offshore Cable Alignment from trunkline, with Water depth, Bathymetry contours (SRTM) and Construction footprint**

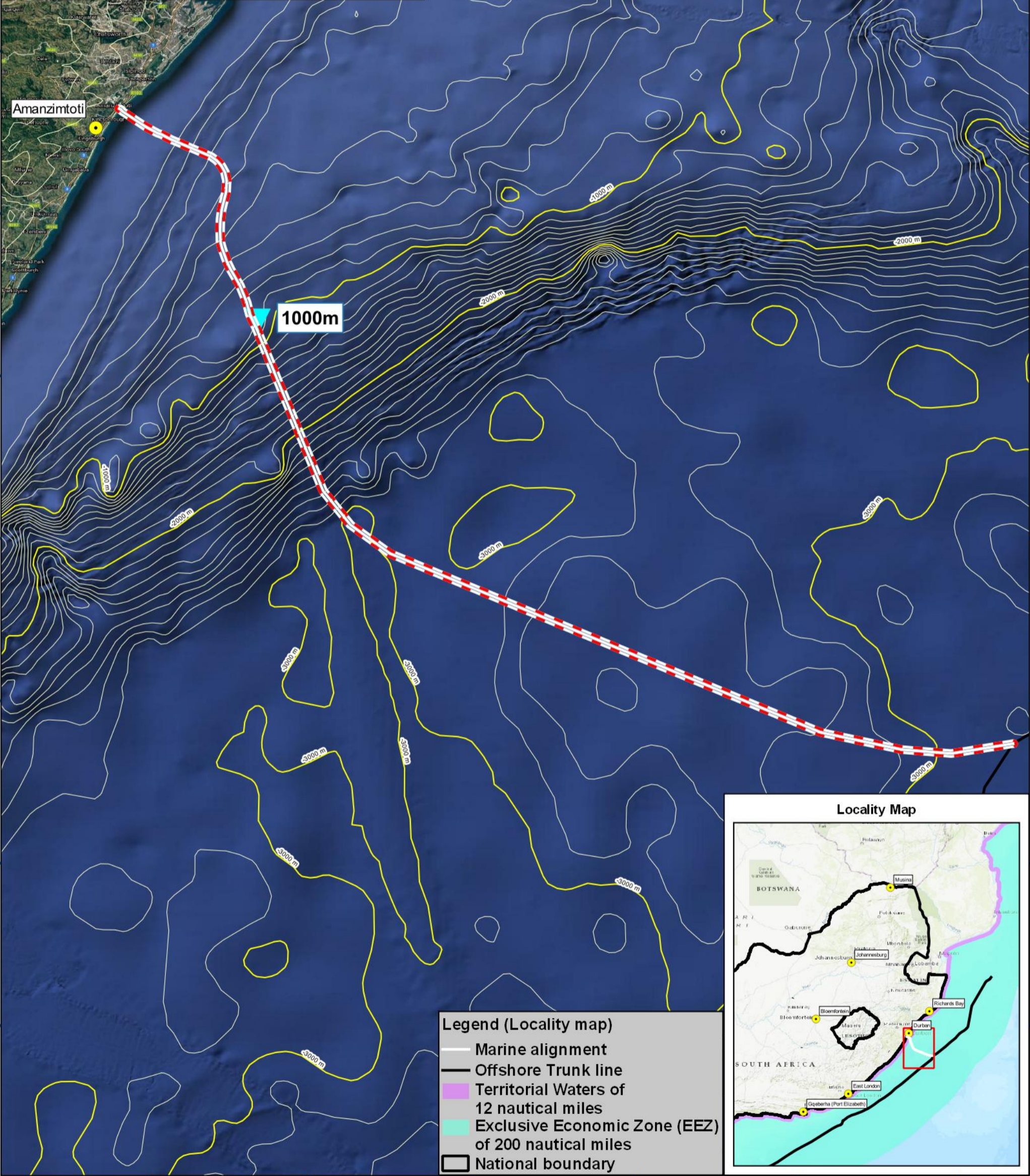
30°56.559'E      31°11.412'E      31°26.264'E      31°41.117'E      31°55.969'E      32°10.822'E

29°42.297'S  
29°57.150'S  
30°12.002'S  
30°26.855'S  
30°41.707'S  
30°56.559'S  
31°11.412'S  
31°26.264'S

29°42.297'S  
29°57.150'S  
30°12.002'S  
30°26.855'S  
30°41.707'S  
30°56.559'S  
31°11.412'S  
31°26.264'S

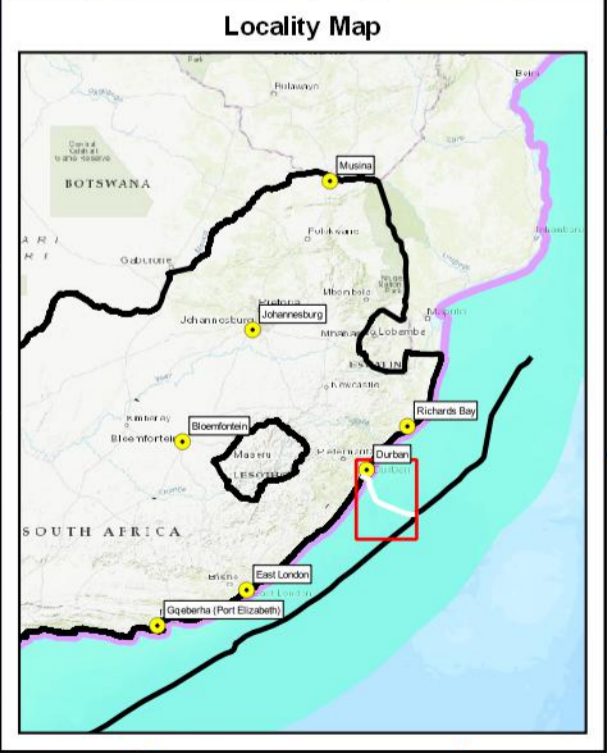
**Legend (Main map)**

- Marine alignment
- Offshore Trunk line
- Bathymetry - RSA (SRTM100)**
- 1000m intervals
- 100m intervals
- ▲ Water depth = 1000m
- ▬ Offshore cable corridor – 0,5 km (250 m each side)



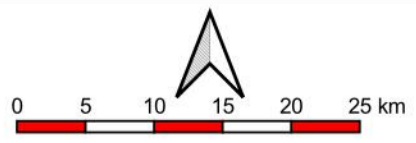
**Legend (Locality map)**

- Marine alignment
- Offshore Trunk line
- Territorial Waters of 12 nautical miles
- Exclusive Economic Zone (EEZ) of 200 nautical miles
- National boundary



Mapping and layout by  
**Technologies**  
Spatial Systems Solutions

For Giles Churchill  
**acer**  
AFRICA



1:425000  
when printed at A3 (420 x 297 mm)  
Date of print: 30 Aug 2021

Co-Ordinate system  
Projection: Unprojected (Geographic)  
Ellipsoid: WGS84  
Units: Decimal Degrees

Distance notes  
1 nautical mile = 1.852km  
1km = 0.539957km

**2AFRICA/GERA (East) Cable System**

**Amanzimtoti**

**Offshore Cable Alignment from trunkline, with Water depth, Bathymetry contours (SRTM) and Construction footprint**

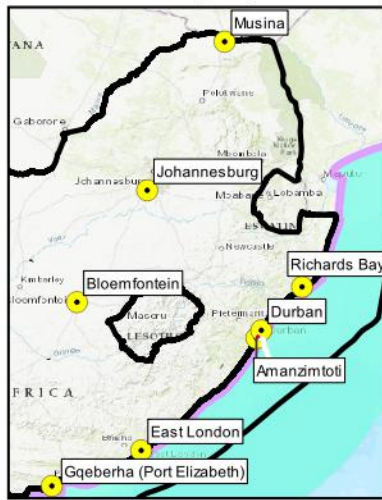
30°53.447'

30°53.851'

30°54.255'

30°54.660'

### Locality Map



### Legend (Locality map)

- Marine alignment
- Territorial Waters of 12 nautical miles
- Exclusive Economic Zone (EEZ) of 200 nautical miles
- National boundary

### Inset Zoom Map - Alternative 1 & 3



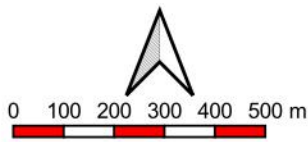
### Legend (Main map)

- Sea Earth plate
- Sea Earth Route (approximate)
- The construction corridor on the beach will be limited to 50 m each side of the cable
- Trench from BMH to CLS 1 m in width, however a construction corridor of 10 m (5 m either side of the cable)

Mapping and layout by



For Giles Churchill



1:15000

when printed at A4 (297 x 210 mm)

Date of print: 30 Aug 2021

Co-Ordinate system  
 Projection: Transverse Mercator  
 Datum: Hartebeeshoek 1994  
 Ellipsoid: WGS84  
 Meridian: Lo31°  
 Units: Metres

2AFRICA/GERA (East) Cable System

Amanzimtoti

Onshore alignment with alternatives, landing point Sea Earth Route and Plate and Construction footprint

Distance notes

1 nautical mile = 1.852km

1km = 0.539957km

-30°1.300'  
-30°1.704'  
-30°2.108'  
-30°2.513'  
-30°2.917'

-30°1.300'  
-30°1.704'  
-30°2.108'  
-30°2.513'  
-30°2.917'