

18°5 130'E      18°6 923'E      18°8 717'E      18°10 511'E      18°12 304'E      18°14 098'E

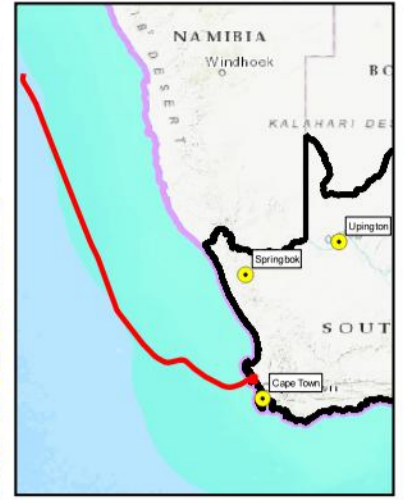
**Legend (Main map)**

- Alternative 1 - Existing WACS Front haul
- Preferred offshore alignment
- Alternative 1 - WACS BMH
- Alternative 2 - BMH
- Alternative 1 - Existing WACS CLS
- Critical Biodiversity Area (CBA 1) category**
- CBA: River
- CBA: Terrestrial
- CBA: Wetland
- Ecological Support Area (ESA 1) category**
- ESA: Aquatic
- ESA: Terrestrial
- Ecological Support Area (ESA 2) category**
- ESA2: Restore from other land use
- ESA2: Restore from plantation or high density IAP
- Other Natural Area (ONA)
- Protected areas (PA)
- Protected Dune
- Reasons
- SANBI Vegmap (2018 Beta)**
- Cape Seashore Vegetation
- Hopefield Sand Fynbos
- Langebaan Dune Strandveld
- Saldanha Flats Strandveld

**Legend (Locality map)**

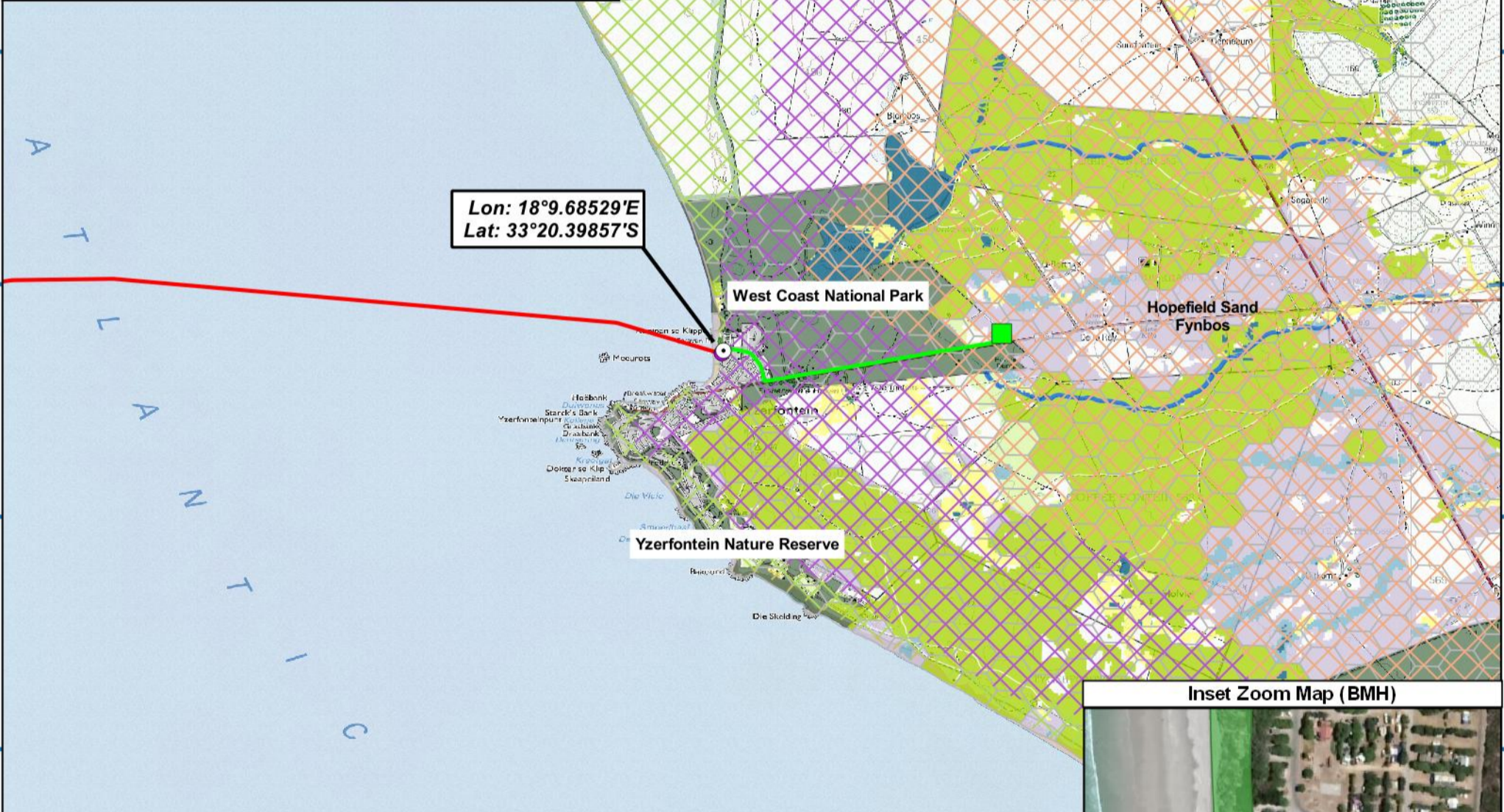
- Preferred offshore alignment
- Territorial Waters of 12 nautical miles
- Exclusive Economic Zone (EEZ) of 200 nautical miles
- National boundary

**Locality Map**



33°12 693'S  
33°14 487'S  
33°16 280'S  
33°18 074'S  
33°19 867'S  
33°21 661'S  
33°23 455'S  
33°25 248'S

18°5 130'E      18°6 923'E      18°8 717'E      18°10 511'E      18°12 304'E      18°14 098'E

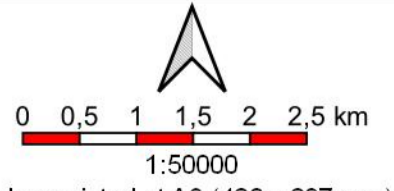
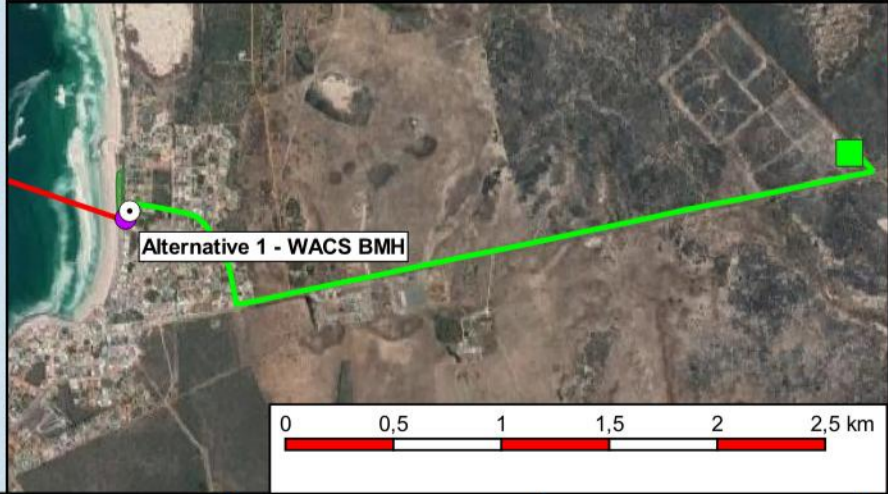


Lon: 18°9.68529'E  
Lat: 33°20.39857'S

**Inset Zoom Map (BMH)**



**Inset Zoom Map - Offshore to BMH Alternatives**



Co-Ordinate system  
Projection: Unprojected (Geographic)  
Ellipsoid: WGS84  
Units: Decimal Degrees  
Main map grid coordinates  
Degrees and Decimal Minutes  
Distance notes  
1 nautical mile = 1.852km  
1km = 0.539957km



when printed at A3 (420 x 297 mm)  
Date of print: 06 Nov 2020

18°4'28"E

18°22'15"E

18°40'2"E

18°57'48"E

32°35'36"S

32°53'23"S

33°11'10"S

33°28'57"S

33°46'43"S

34°4'30"S

32°35'36"S

32°53'23"S

33°11'10"S

33°28'57"S

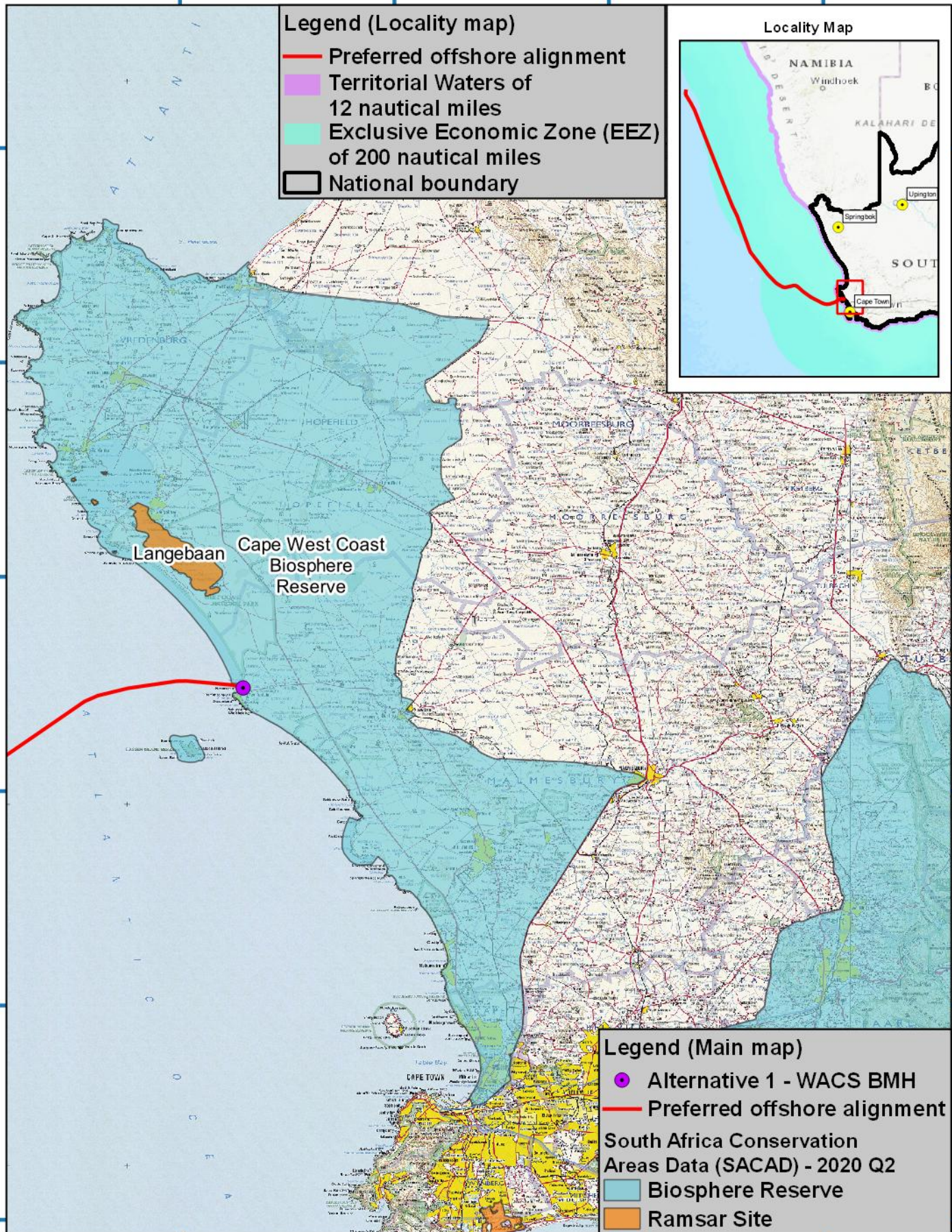
33°46'43"S

34°4'30"S

### Legend (Locality map)

- Preferred offshore alignment
- Territorial Waters of 12 nautical miles
- Exclusive Economic Zone (EEZ) of 200 nautical miles
- National boundary

### Locality Map



### Legend (Main map)

- Alternative 1 - WACS BMH
- Preferred offshore alignment
- South Africa Conservation Areas Data (SACAD) - 2020 Q2**
- Biosphere Reserve
- Ramsar Site

18°4'28"E

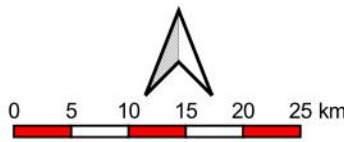
18°22'15"E

18°40'2"E

18°57'48"E

Mapping and layout by

For Giles Churchill



when printed at A4 (297 x 210 mm)

Date of print: 06 Nov 2020

Co-Ordinate system  
 Projection: Transverse Mercator  
 Datum: Harthebeeshoek 1994  
 Ellipsoid: WGS84  
 Meridian: Lo19°  
 Units: Metres

Main map grid coordinates  
Degrees and Decimal Minutes

Distance notes

1 nautical mile = 1.852km

1km = 0.539957km

2AFRICA Landing

Yzerfontein

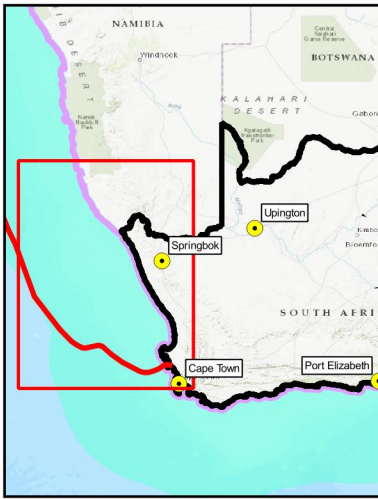
**Offshore alignment  
 with South Africa Conservation  
 Areas Data (SACAD) - 2020 Q2**

14°0'0"E

16°0'0"E

18°0'0"E

### Locality Map



### Legend (Main map)

- Preferred offshore alignment
- Territorial Waters of 12 nautical miles
- Exclusive Economic Zone (EEZ) of 200 nautical miles
- BSP Marine Protected Areas (SANBI: 2017)
- Marine Protected Areas (Gazetted - 03 Feb 2016)
- Marine Protected Areas (SANBI: 2011)
- Focus areas for Offshore Protection

### Legend (Locality map)

- Preferred offshore alignment
- Territorial Waters of 12 nautical miles
- Exclusive Economic Zone (EEZ) of 200 nautical miles
- National boundary

28°0'0"S

30°0'0"S

32°0'0"S

34°0'0"S

28°0'0"S

30°0'0"S

32°0'0"S

34°0'0"S

14°0'0"E

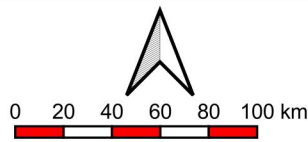
16°0'0"E

18°0'0"E

Mapping and layout by



For Giles Churchill



when printed at A4 (297 x 210 mm)  
Date of print: 08 Jun 2020

Co-Ordinate system  
Projection: Unprojected  
(Geographic)  
Ellipsoid: WGS84  
Units: Decimal Degrees

Distance notes

1 nautical mile = 1.852km  
1km = 0.539957km

**2AFRICA Landing**

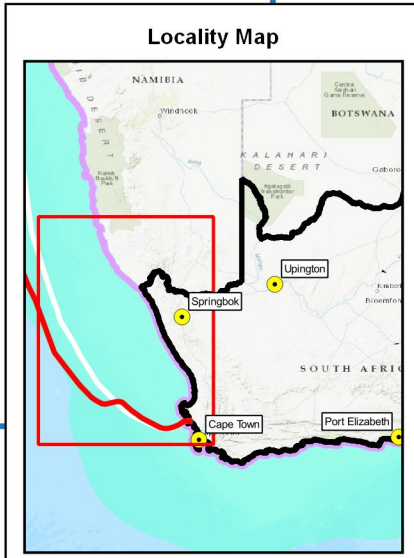
**Yzerfontein**

**Offshore alignment up to  
Namibia territorial waters  
200 nautical miles (EEZ) offshore**

14°0'0"E

16°0'0"E

18°0'0"E



**Legend (Locality map)**

- 2AFRICA (West)
- WACS
- Territorial Waters of 12 nautical miles
- Exclusive Economic Zone (EEZ) of 200 nautical miles
- National boundary

**Legend (Main map)**

- 2AFRICA (West)
- WACS
- Territorial Waters of 12 nautical miles
- Exclusive Economic Zone (EEZ) of 200 nautical miles

28°0'0"S

28°0'0"S

30°0'0"S

30°0'0"S

32°0'0"S

32°0'0"S

34°0'0"S

34°0'0"S

14°0'0"E

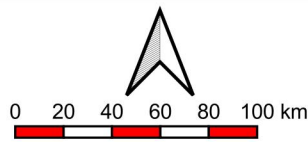
16°0'0"E

18°0'0"E

Mapping and layout by



For Giles Churchill



when printed at A4 (297 x 210 mm)  
Date of print: 08 Jun 2020

Co-Ordinate system  
Projection: Unprojected  
(Geographic)  
Ellipsoid: WGS84  
Units: Decimal Degrees

Distance notes  
1 nautical mile = 1.852km  
1km = 0.539957km

**2AFRICA Landing**

**Yzerfontein**

Offshore alignment up to Nambia territorial waters 200 nautical miles (EEZ) offshore

18°9'36"E

18°10'12"E

18°10'48"E

18°11'24"E

18°12'0"E

### Locality Map



### Legend (Locality map)

- Preferred offshore alignment
- Territorial Waters of 12 nautical miles
- Exclusive Economic Zone (EEZ) of 200 nautical miles
- National boundary

### Inset Zoom Map



### Legend (Main map)

- Alternative 1 - WACS BMH
- Alternative 2 - BMH
- Alternative 1 - Existing WACS CLS
- Alternative 1 - Existing WACS Front haul
- Preferred offshore alignment
- Protected Dune

33°18'36"S

33°19'12"S

33°19'48"S

33°20'24"S

33°21'0"S

33°18'36"S

33°19'12"S

33°19'48"S

33°20'24"S

33°21'0"S

18°9'36"E

18°10'12"E

18°10'48"E

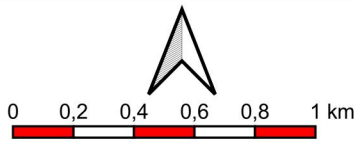
18°11'24"E

18°12'0"E

Mapping and layout by



For Giles Churchill



when printed at A4 (297 x 210 mm)  
Date of print: 08 Jun 2020

Co-Ordinate system  
Projection: Transverse Mercator  
Datum: Hartbeeshoek 1994  
Ellipsoid: WGS84  
Meridian: Lo19°  
Units: Metres

Distance notes

1 nautical mile = 1.852km  
1km = 0.539957km

**2AFRICA Landing**

**Yzerfontein**

**Onshore alignment  
with alternatives, landing point  
and other points of interest**

18°9'40"E

18°9'41"E

18°9'42"E

18°9'42"E

18°9'43"E

### Locality Map



### Legend (Locality map)

- Preferred offshore alignment
- Territorial Waters of 12 nautical miles
- Exclusive Economic Zone (EEZ) of 200 nautical miles
- National boundary

33°20'22"S

33°20'23"S

33°20'23"S

33°20'24"S

33°20'25"S

33°20'22"S

33°20'23"S

33°20'23"S

33°20'24"S

33°20'25"S

Alternative 2 - BMH

Alternative 1 - WACS BMH

### Legend (Main map)

- Alternative 1 - WACS BMH
- Alternative 2 - BMH

18°9'40"E

18°9'41"E

18°9'42"E

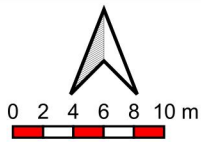
18°9'42"E

18°9'43"E

Mapping and layout by



For Giles Churchill



1:500

when printed at A4 (297 x 210 mm)

Date of print: 08 Jun 2020

Co-Ordinate system  
 Projection: Transverse Mercator  
 Datum: Harthebeeshoek 1994  
 Ellipsoid: WGS84  
 Meridian: Lo19°  
 Units: Metres

Distance notes

1 nautical mile = 1.852km

1km = 0.539957km

**2AFRICA Landing**

**Yzerfontein**

**Onshore zoom map  
of Beach Manhole locations**