

14°0'0"E

16°0'0"E

18°0'0"E

28°0'0"S

28°0'0"S

30°0'0"S

30°0'0"S

32°0'0"S

32°0'0"S

34°0'0"S

34°0'0"S

14°0'0"E

16°0'0"E

18°0'0"E



Legend (Locality map)

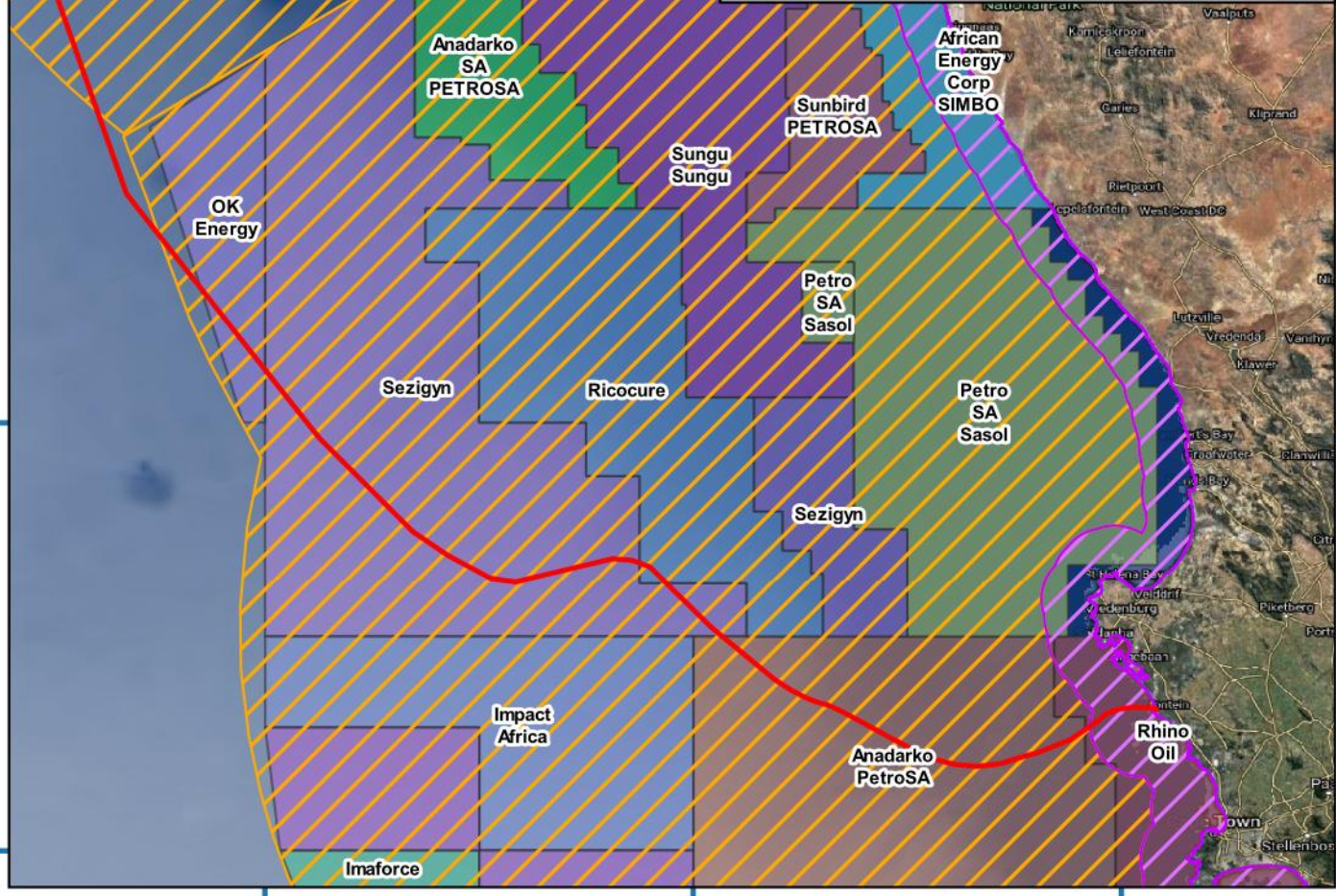
- Preferred offshore alignment
- Territorial Waters of 12 nautical miles
- Exclusive Economic Zone (EEZ) of 200 nautical miles
- National boundary

Legend (Main map)

- Preferred offshore alignment
- Territorial Waters of 12 nautical miles
- Exclusive Economic Zone (EEZ) of 200 nautical miles

Offshore lease areas (Client name)
Feb 2019 Petroleum SA (Selected)

- African Energy Corp/SIMBO
- Anadarko SA/PETROSA
- Anadarko/PetroSA
- Imaforce
- Impact Africa
- OK Energy
- Petro SA/Sasol
- Rhino Oil
- Ricocure
- Sezigyn
- Sunbird/PETROSA
- Sungu Sungu
- Totasco/PetroSA
- N/A

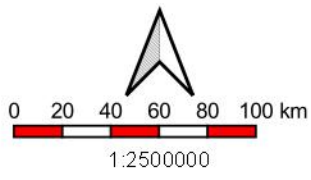


Mapping and layout by

S3 Technologies
Spatial Systems Solutions

For Giles Churchill

acer
AFRICA



when printed at A4 (297 x 210 mm)
Date of print: 13 May 2021

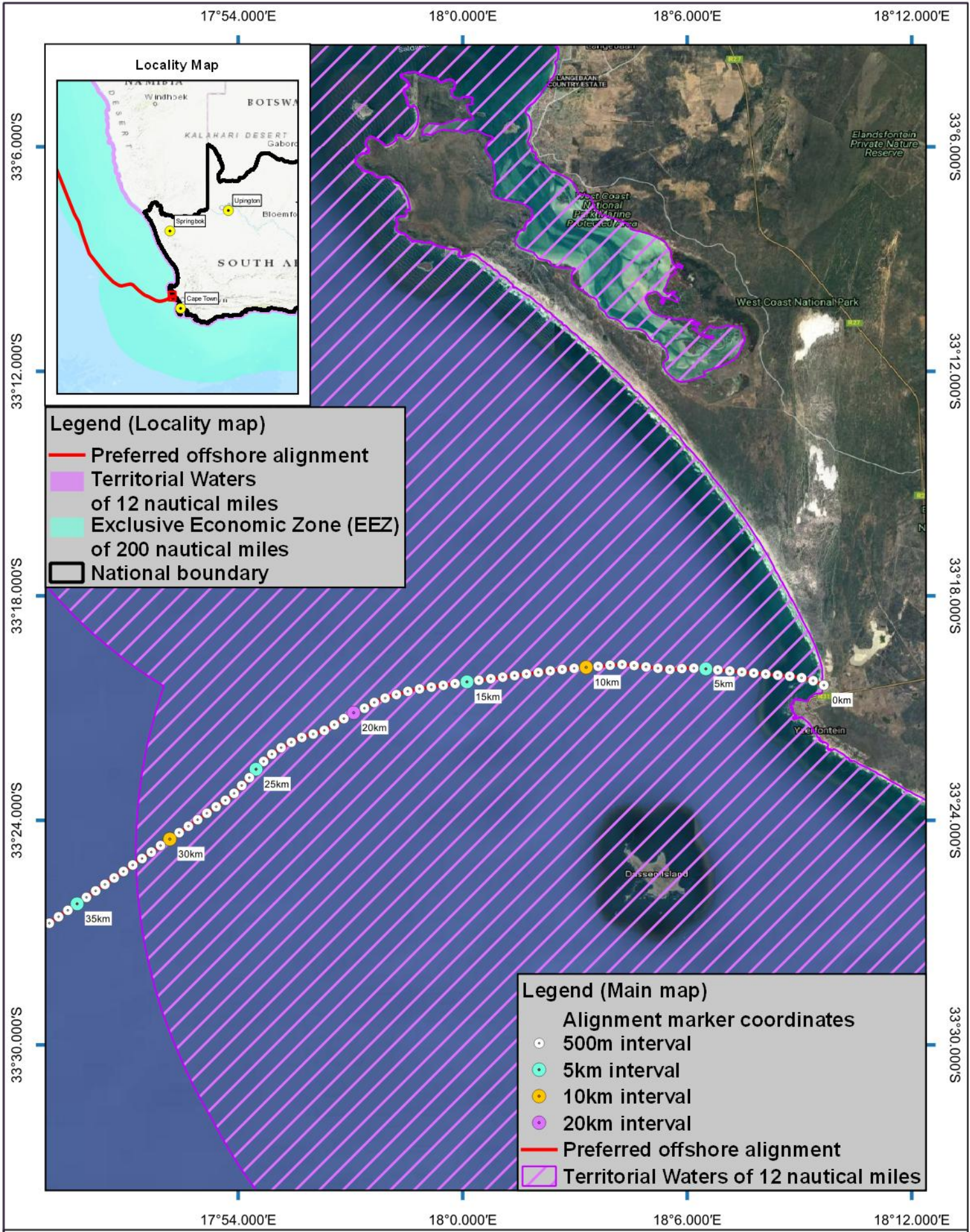
Co-Ordinate system
Projection: Unprojected
(Geographic)
Ellipsoid: WGS84
Units: Decimal Degrees

Distance notes
1 nautical mile = 1.852km
1km = 0.539957km

2AFRICA Landing

Yzerfontein

Offshore alignment with Offshore Lease Areas



Legend (Locality map)

- Preferred offshore alignment
- Territorial Waters of 12 nautical miles
- Exclusive Economic Zone (EEZ) of 200 nautical miles
- National boundary

Legend (Main map)

- Alignment marker coordinates
- 500m interval
- 5km interval
- 10km interval
- 20km interval
- Preferred offshore alignment
- Territorial Waters of 12 nautical miles

14°0'0"E 16°0'0"E 18°0'0"E

28°0'0"S

28°0'0"S

30°0'0"S

30°0'0"S

32°0'0"S

32°0'0"S

34°0'0"S

34°0'0"S

Locality Map

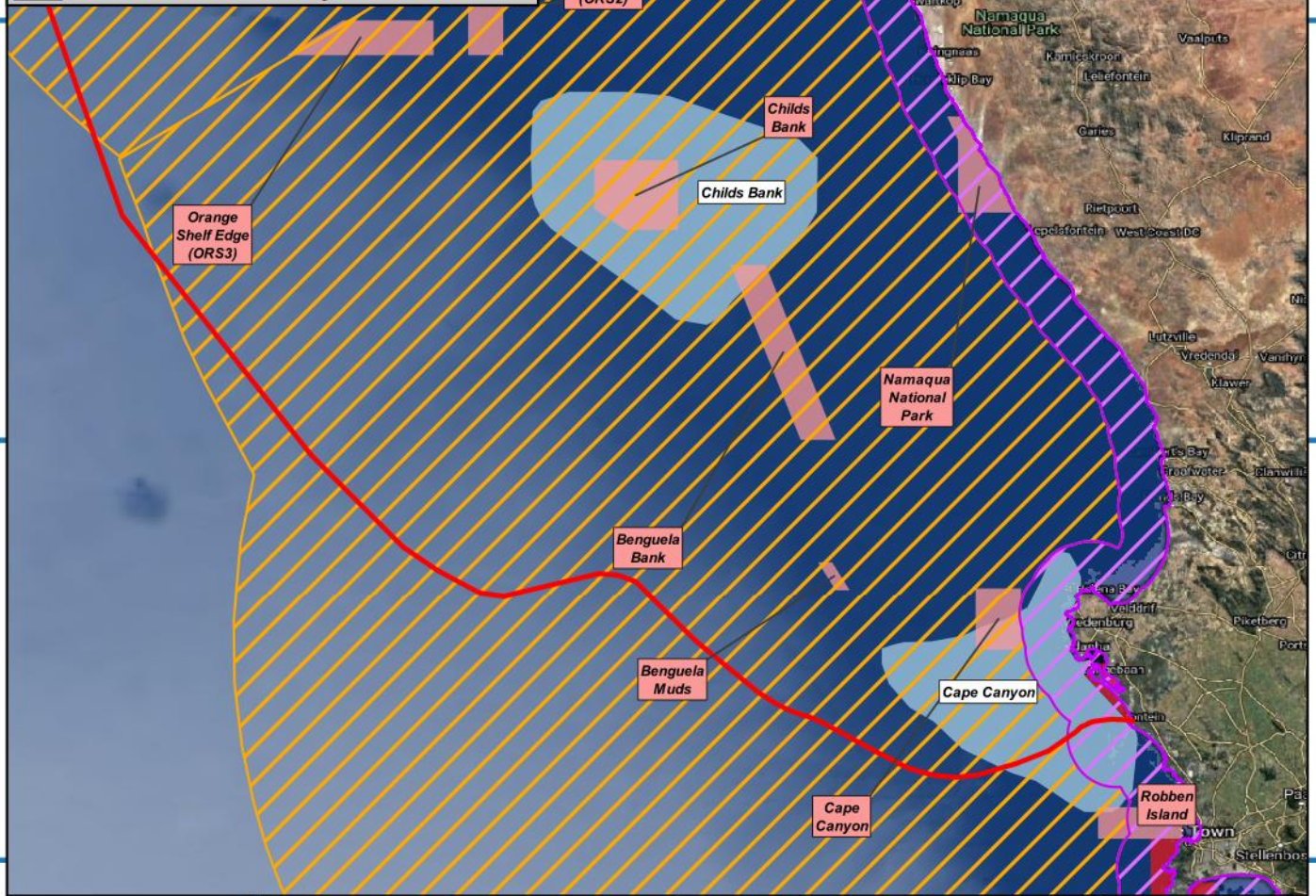


Legend (Main map)

- Preferred offshore alignment
- Territorial Waters of 12 nautical miles
- Exclusive Economic Zone (EEZ) of 200 nautical miles
- BSP Marine Protected Areas (SANBI: 2017)
- Marine Protected Areas (Gazetted - 03 Feb 2016)
- Focus areas for Offshore Protection

Legend (Locality map)

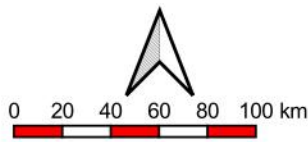
- Preferred offshore alignment
- Territorial Waters of 12 nautical miles
- Exclusive Economic Zone (EEZ) of 200 nautical miles
- National boundary



14°0'0"E 16°0'0"E 18°0'0"E

Mapping and layout by

For Giles Churchill



when printed at A4 (297 x 210 mm)

Date of print: 13 May 2021

Co-Ordinate system
 Projection: Unprojected
 (Geographic)
 Ellipsoid: WGS84
 Units: Decimal Degrees

Distance notes

1 nautical mile = 1.852km

1km = 0.539957km

2AFRICA Landing

Yzerfontein

Offshore alignment up to
 Namibia territorial waters
 200 nautical miles (EEZ) offshore

18°4.474'E

18°22.252'E

18°40.030'E

18°57.808'E

32°35.608'S

32°53.386'S

33°11.165'S

33°28.943'S

33°46.721'S

34°4.499'S

32°35.608'S

32°53.386'S

33°11.165'S

33°28.943'S

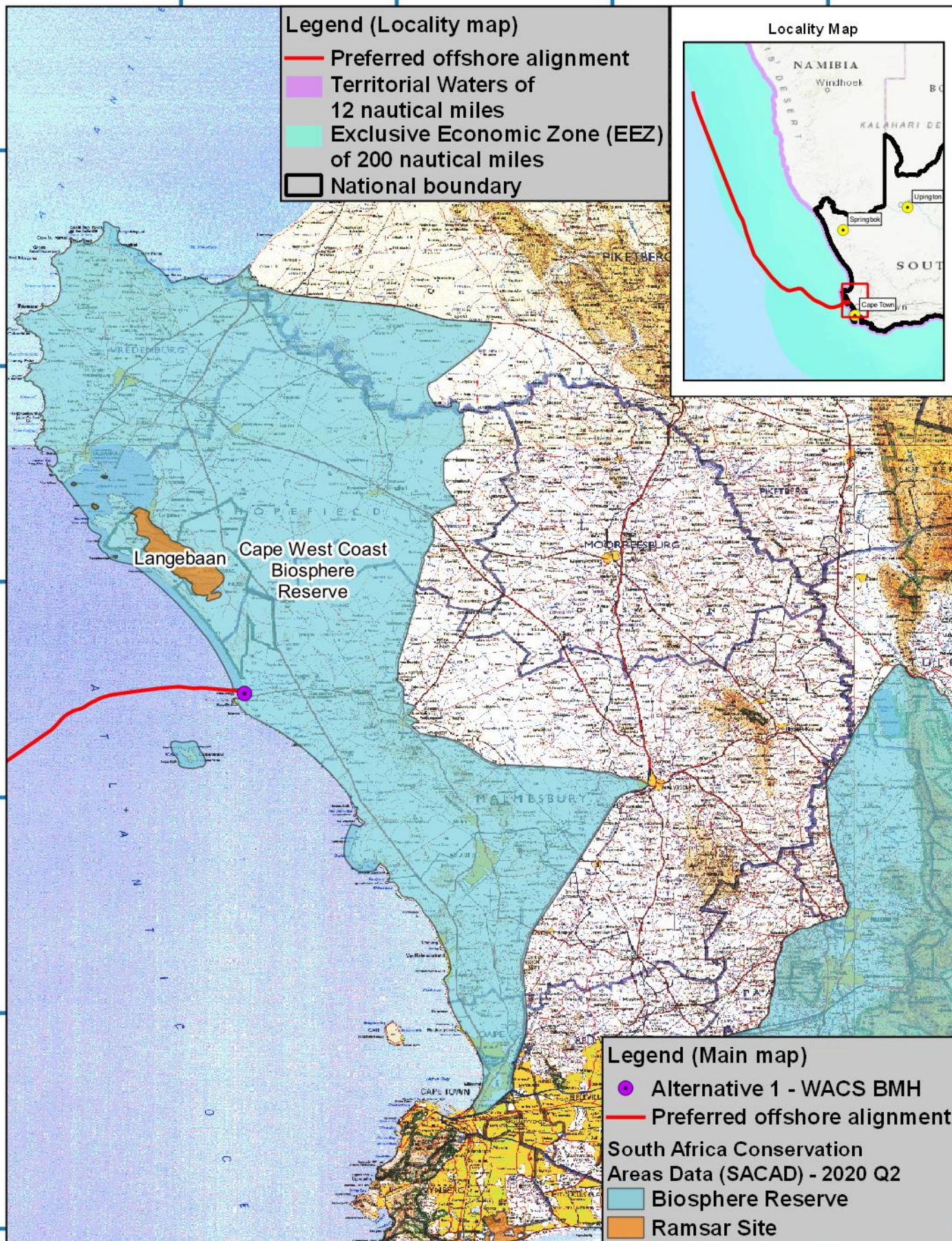
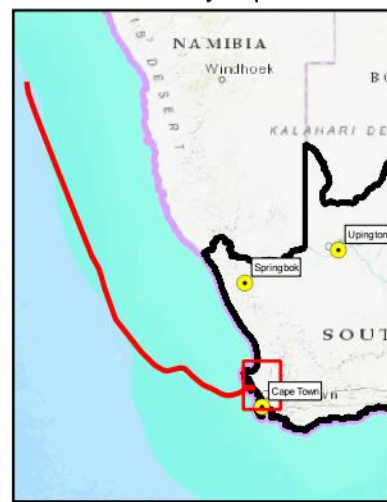
33°46.721'S

34°4.499'S

Legend (Locality map)

- Preferred offshore alignment
- Territorial Waters of 12 nautical miles
- Exclusive Economic Zone (EEZ) of 200 nautical miles
- National boundary

Locality Map



Legend (Main map)

- Alternative 1 - WACS BMH
 - Preferred offshore alignment
- South Africa Conservation Areas Data (SACAD) - 2020 Q2**
- Biosphere Reserve
 - Ramsar Site

18°4.474'E

18°22.252'E

18°40.030'E

18°57.808'E

Mapping and layout by

For Giles Churchill



1:500000

when printed at A4 (297 x 210 mm)

Date of print: 13 May 2021

Co-Ordinate system
 Projection: Unprojected
 (Geographic)
 Ellipsoid: WGS84
 Units: Decimal Degrees

Main map grid coordinates
 Degrees and Decimal Minutes

Distance notes

1 nautical mile = 1.852km

1km = 0.539957nm

2AFRICA Landing

Yzerfontein

**Offshore alignment
 with South Africa Conservation
 Areas Data (SACAD) - 2020 Q2**

18°9'36"E

18°10'12"E

18°10'48"E

18°11'24"E

18°12'0"E

33°18'36"S

33°19'12"S

33°19'48"S

33°20'24"S

33°21'0"S

33°18'36"S

33°19'12"S

33°19'48"S

33°20'24"S

33°21'0"S

Locality Map



Inset Zoom Map



Legend (Locality map)

- Preferred offshore alignment
- Territorial Waters of 12 nautical miles
- Exclusive Economic Zone (EEZ) of 200 nautical miles
- National boundary

Alternative 2 - BMH

Alternative 1 - WACS BMH

Legend (Main map)

- Alternative 1 - WACS BMH
- Alternative 2 - BMH
- Alternative 1 - Existing WACS CLS
- Alternative 1 - Existing WACS Front haul
- Preferred offshore alignment
- Protected Dune

18°9'36"E

18°10'12"E

18°10'48"E

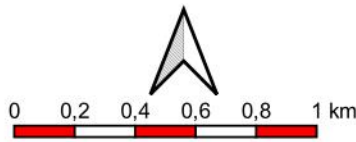
18°11'24"E

18°12'0"E

Mapping and layout by



For Giles Churchill



when printed at A4 (297 x 210 mm)

Date of print: 13 May 2021

Co-Ordinate system
Projection: Transverse Mercator
Datum: Hartbeeshoek 1994
Ellipsoid: WGS84
Meridian: Lo19°
Units: Metres

Distance notes

1 nautical mile = 1.852km

1km = 0.539957km

2AFRICA Landing

Yzerfontein

Onshore alignment
with alternatives, landing point
and other points of interest

18°9.592'E 18°9.619'E 18°9.646'E 18°9.673'E 18°9.700'E

33°20.335'S

33°20.362'S

33°20.389'S

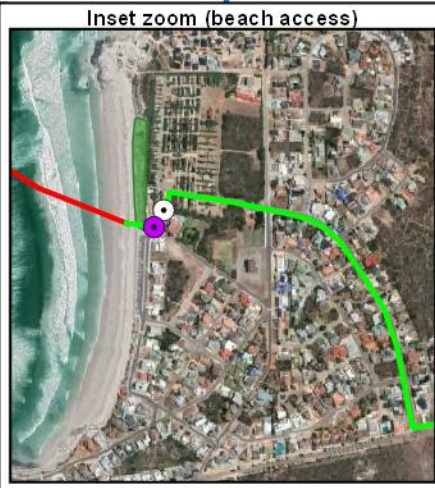
33°20.416'S

33°20.335'S

33°20.362'S

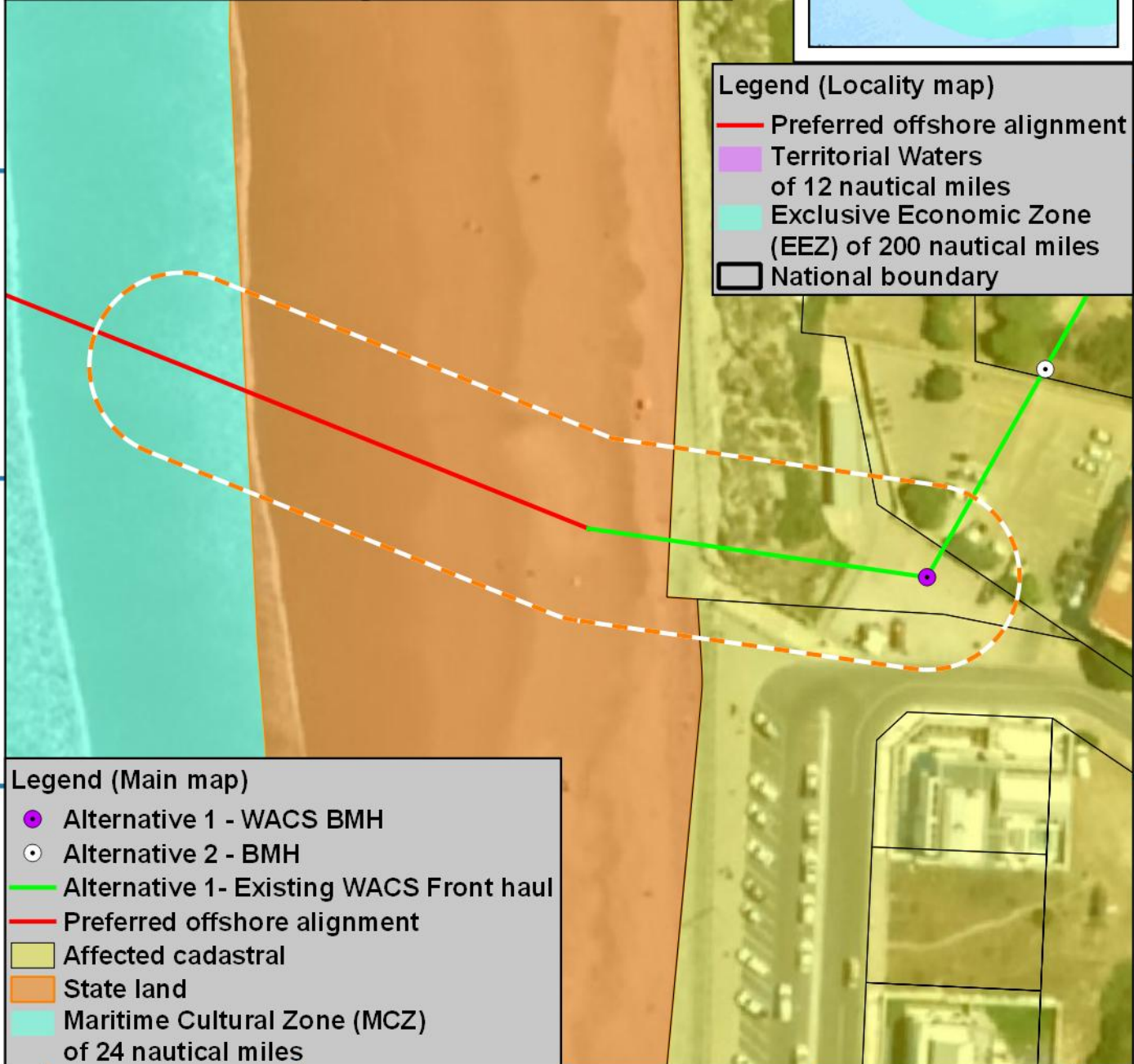
33°20.389'S

33°20.416'S



Legend (Locality map)

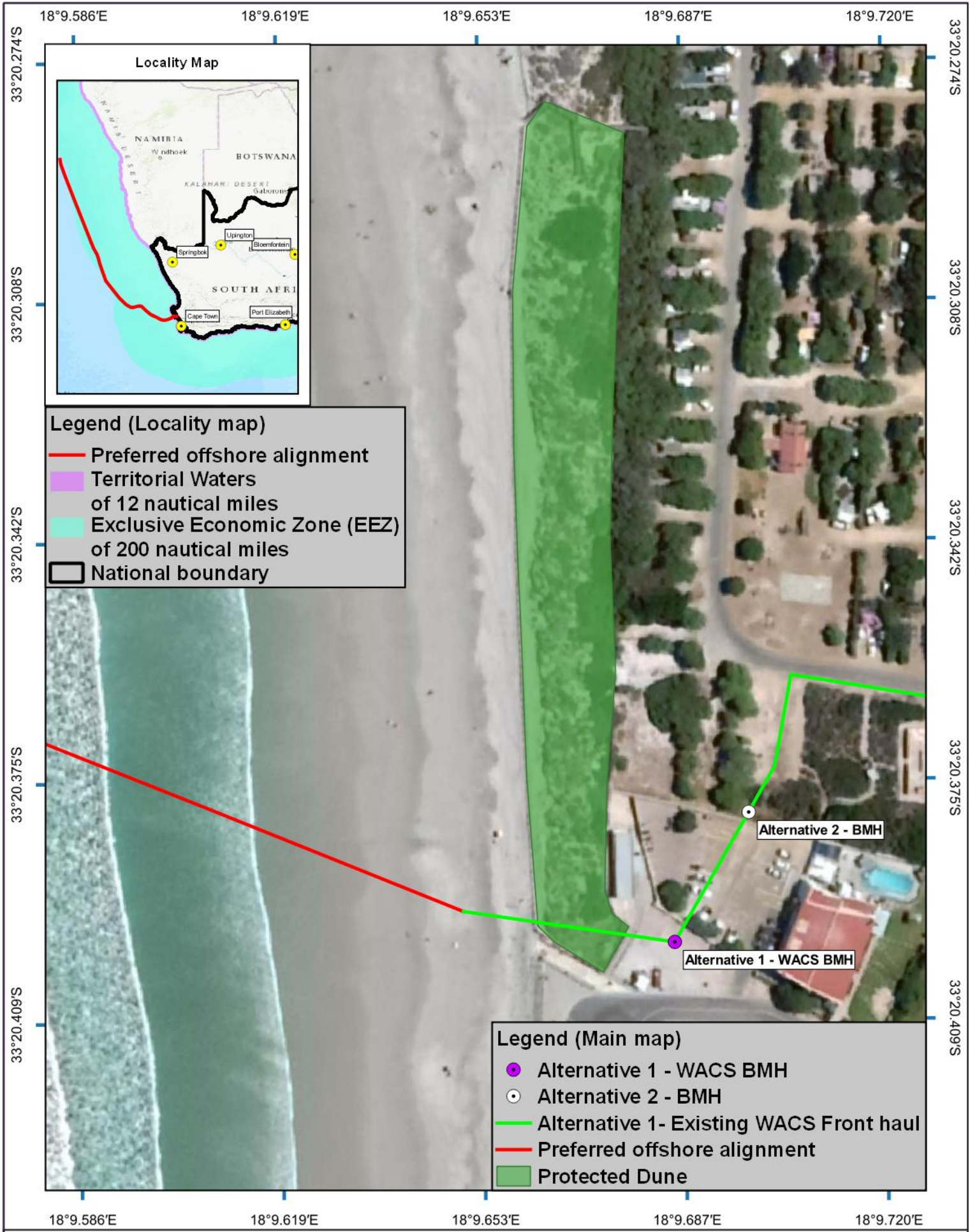
- Preferred offshore alignment
- Territorial Waters of 12 nautical miles
- Exclusive Economic Zone (EEZ) of 200 nautical miles
- National boundary



Legend (Main map)

- Alternative 1 - WACS BMH
- Alternative 2 - BMH
- Alternative 1- Existing WACS Front haul
- Preferred offshore alignment
- Affected cadastral
- State land
- Maritime Cultural Zone (MCZ) of 24 nautical miles

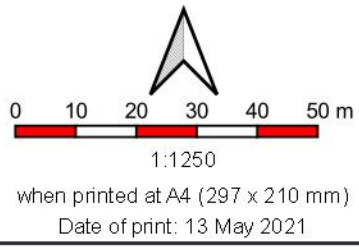
18°9.592'E 18°9.619'E 18°9.646'E 18°9.673'E 18°9.700'E



Mapping and layout by

 Spatial Systems Solutions

For Giles Churchill



Co-Ordinate system
 Projection: Transverse Mercator
 Datum: Hartbeeshoek 1994
 Ellipsoid: WGS84
 Meridian: Lo19°
 Units: Metres

Distance notes
 1 nautical mile = 1.852km
 1km = 0.539957nmi

2AFRICA Landing

Yzerfontein

Onshore alignment with alternatives, landing point and other points of interest

18°9'36"E 18°10'12"E 18°10'48"E 18°11'24"E 18°12'0"E

33°18'36"S

33°18'36"S

33°19'12"S

33°19'12"S

33°19'48"S

33°19'48"S

33°20'24"S

33°20'24"S

33°21'0"S

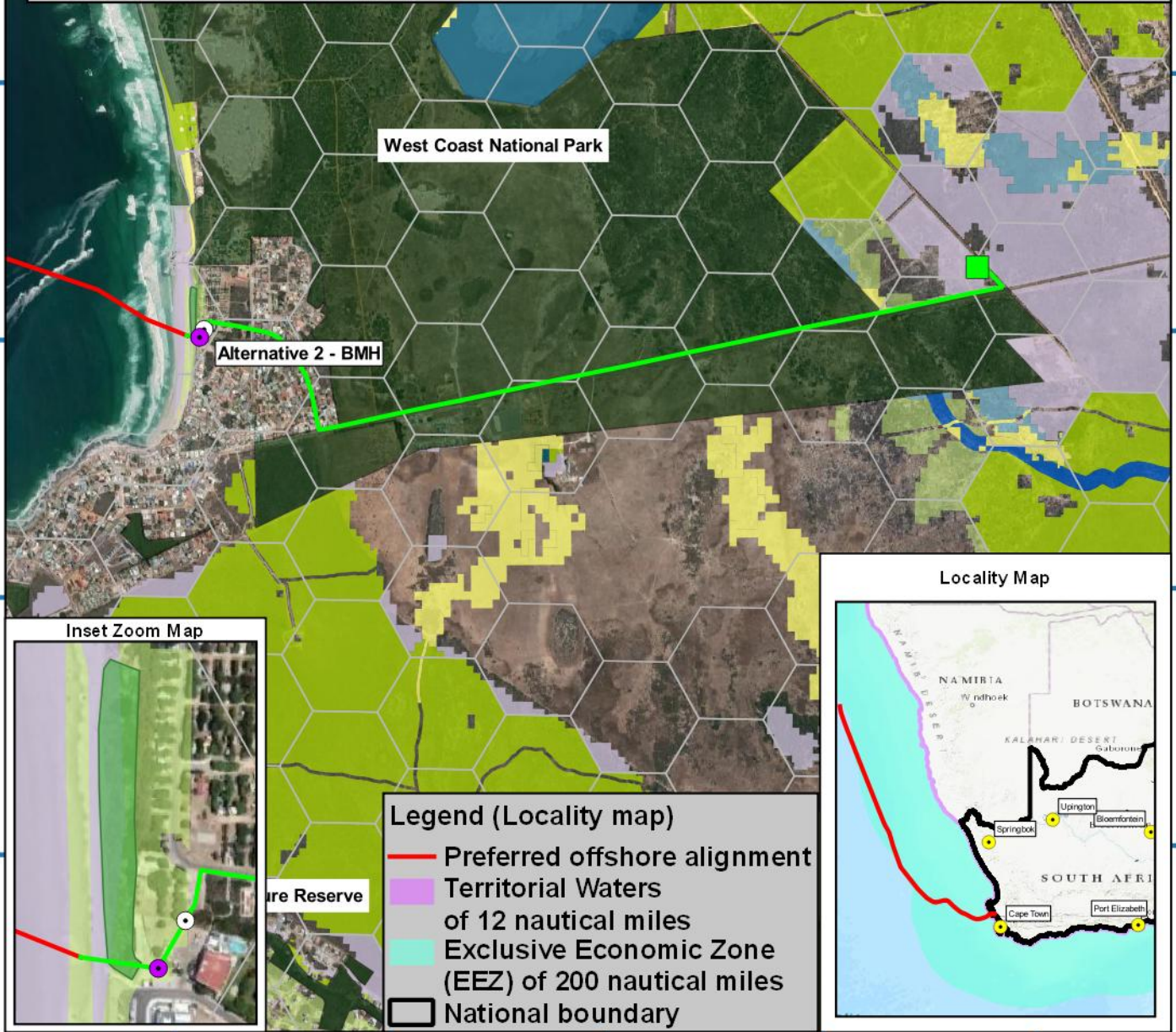
33°21'0"S

33°21'36"S

33°21'36"S

Legend (Main map)

- Alternative 1 - WACS BMH
- Alternative 2 - BMH
- Alternative 1 - Existing WACS CLS
- Alternative 1- Existing WACS Front haul
- Preferred offshore alignment
- Protected Dune
- Critical Biodiversity Area (CBA 1) category
 - CBA: River
 - CBA: Terrestrial
 - CBA: Wetland
- Ecological Support Area (ESA 1) category
 - ESA: Aquatic
 - ESA: Terrestrial
- Ecological Support Area (ESA 2) category
 - ESA2: Restore from other land use
- Other Natural Area (ONA)
- Reasons

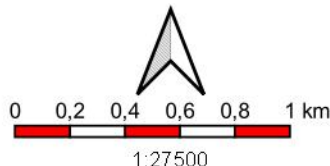


- Legend (Locality map)**
- Preferred offshore alignment
 - Territorial Waters of 12 nautical miles
 - Exclusive Economic Zone (EEZ) of 200 nautical miles
 - National boundary

18°9'36"E 18°10'12"E 18°10'48"E 18°11'24"E 18°12'0"E

Mapping and layout by

For Giles Churchill



when printed at A4 (297 x 210 mm)
Date of print: 13 May 2021

Co-Ordinate system
Projection: Transverse Mercator
Datum: Hartebeeshoek 1994
Ellipsoid: WGS84
Meridian: Lo19°
Units: Metres

Distance notes

1 nautical mile = 1.852km
1km = 0.539957nmi

2AFRICA Landing

Yzerfontein

Onshore alignment with alternatives, landing point and Sensitivity and Veg map data

18°9'36"E 18°10'12"E 18°10'48"E 18°11'24"E 18°12'0"E

33°18'36"S
33°19'12"S

33°18'36"S
33°19'12"S

Legend (Main map)

- Alternative 1 - WACS BMH
- Alternative 2 - BMH
- Alternative 1 - Existing WACS CLS
- Alternative 1- Existing WACS Front haul
- Preferred offshore alignment
- Protected Dune
- Critical Biodiversity Area (CBA 1) category
 - CBA: River
 - CBA: Terrestrial
 - CBA: Wetland
- Ecological Support Area (ESA 1) category
 - ESA: Aquatic
 - ESA: Terrestrial
- Ecological Support Area (ESA 2) category
 - ESA2: Restore from other land use
- Other Natural Area (ONA)
- Reasons
- Landing site and onshore alignment buffer (500m)

33°19'48"S
33°20'24"S

33°19'48"S
33°20'24"S



33°21'0"S

33°21'0"S

Inset Zoom Map



33°21'36"S

33°21'36"S

Legend (Locality map)

- Preferred offshore alignment
- Territorial Waters of 12 nautical miles
- Exclusive Economic Zone (EEZ) of 200 nautical miles
- National boundary

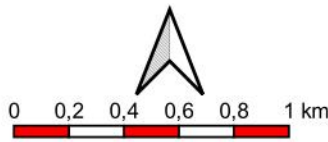
Locality Map



18°9'36"E 18°10'12"E 18°10'48"E 18°11'24"E 18°12'0"E

Mapping and layout by

For Giles Churchill



1:27500

when printed at A4 (297 x 210 mm)

Date of print: 13 May 2021

Co-Ordinate system
Projection: Transverse Mercator
Datum: Hartebeeshoek 1994
Ellipsoid: WGS84
Meridian: Lo19°
Units: Metres

Distance notes

1 nautical mile = 1.852km

1km = 0.539957km

2AFRICA Landing

Yzerfontein

Onshore alignment with alternatives, landing point and Sensitivity and Veg map data

18°9'36"E 18°10'12"E 18°10'48"E 18°11'24"E 18°12'0"E

33°18'36"S
33°19'12"S

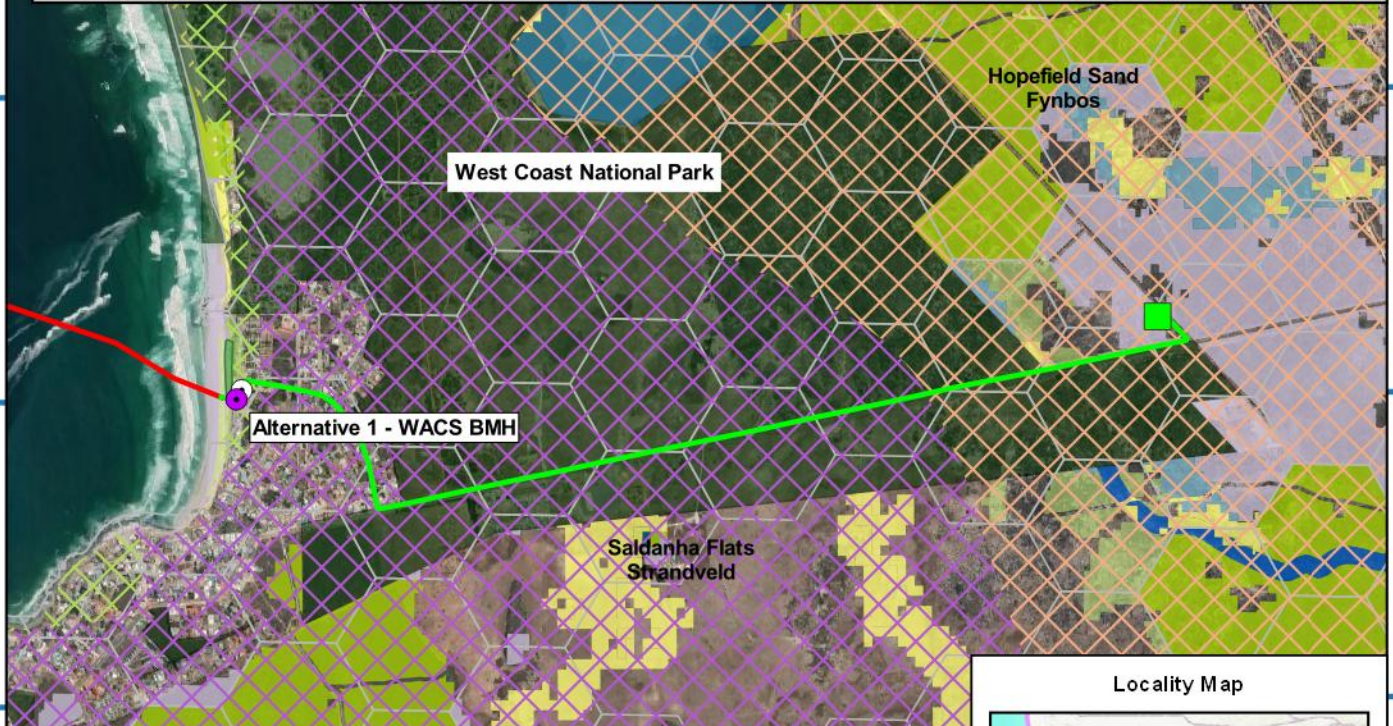
33°18'36"S
33°19'12"S

Legend (Main map)

- Alternative 1 - WACS BMH
- Alternative 2 - BMH
- Alternative 1 - Existing WACS CLS
- Alternative 1- Existing WACS Front haul
- Preferred offshore alignment
- Protected Dune
- Critical Biodiversity Area (CBA 1) category
 - CBA: River
 - CBA: Terrestrial
 - CBA: Wetland
- Ecological Support Area (ESA 1) category
 - ESA: Aquatic
 - ESA: Terrestrial
- Ecological Support Area (ESA 2) category
 - ESA2: Restore from other land use
- Other Natural Area (ONA)
- Reasons
- SANBI Vegmap (2018 Beta)
 - ⊠ Cape Seashore Vegetation
 - ⊠ Hopefield Sand Fynbos
 - ⊠ Langebaan Dune Strandveld
 - ⊠ Saldanha Flats Strandveld

33°19'48"S
33°20'24"S

33°19'48"S
33°20'24"S



33°21'0"S

33°21'0"S



33°21'36"S

33°21'36"S

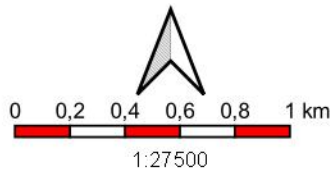
- Legend (Locality map)**
- Preferred offshore alignment
 - Territorial Waters of 12 nautical miles
 - Exclusive Economic Zone (EEZ) of 200 nautical miles
 - National boundary



18°9'36"E 18°10'12"E 18°10'48"E 18°11'24"E 18°12'0"E

Mapping and layout by

For Giles Churchill



when printed at A4 (297 x 210 mm)
Date of print: 13 May 2021

Co-Ordinate system
Projection: Transverse Mercator
Datum: Hartebeeshoek 1994
Ellipsoid: WGS84
Meridian: Lo19°
Units: Metres

Distance notes

1 nautical mile = 1.852km
1km = 0.539957nmi

2AFRICA Landing

Yzerfontein

Onshore alignment with alternatives, landing point and Sensitivity and Veg map data

18°9'36"E 18°10'12"E 18°10'48"E 18°11'24"E 18°12'0"E

33°18'36"S
33°19'12"S
33°19'48"S
33°20'24"S
33°21'0"S
33°21'36"S

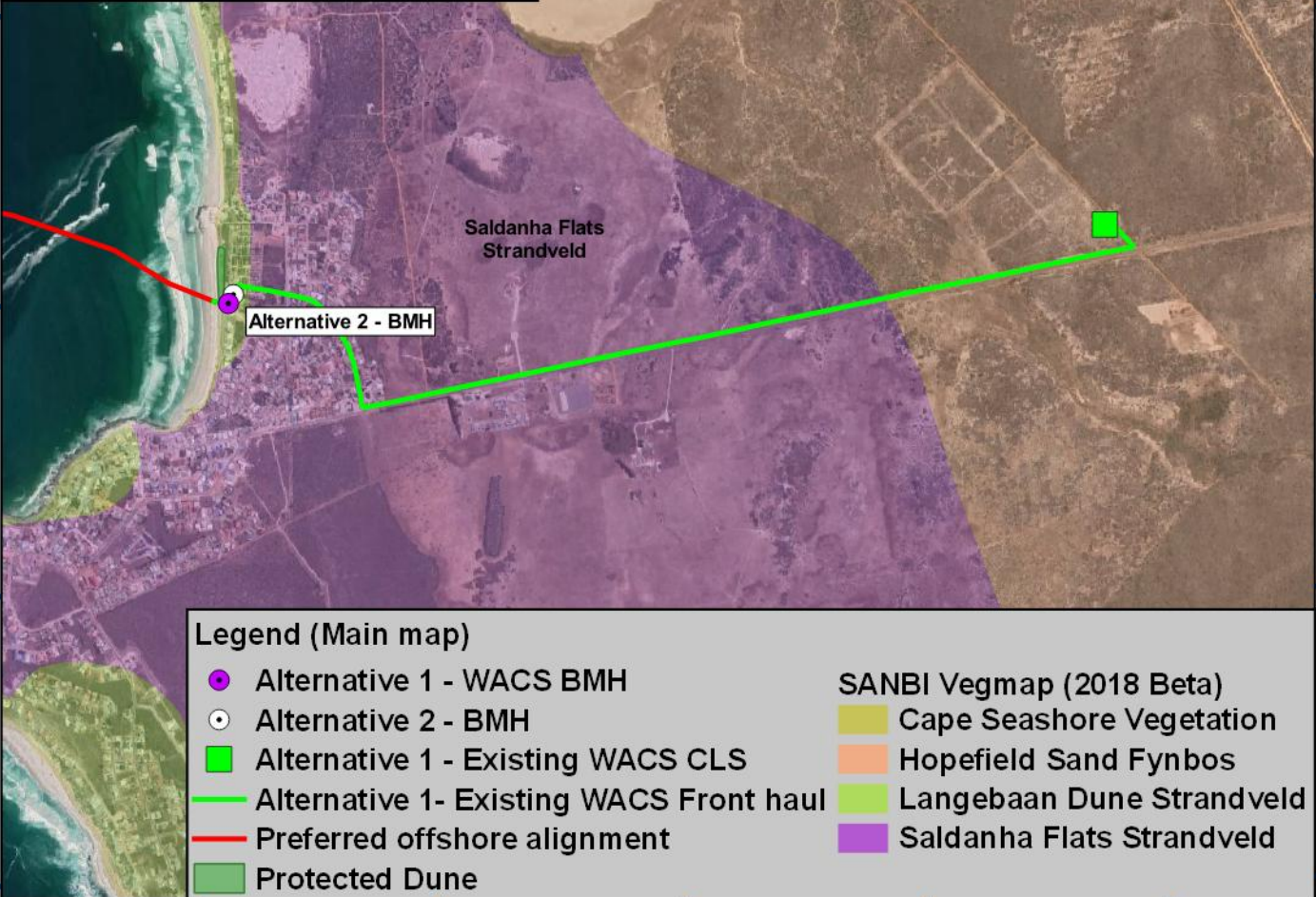
33°18'36"S
33°19'12"S
33°19'48"S
33°20'24"S
33°21'0"S
33°21'36"S

Locality Map



Legend (Locality map)

- Preferred offshore alignment
- Territorial Waters of 12 nautical miles
- Exclusive Economic Zone (EEZ) of 200 nautical miles
- National boundary



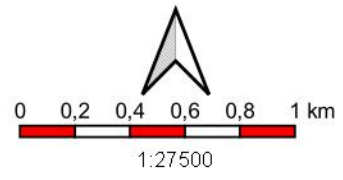
Legend (Main map)

● Alternative 1 - WACS BMH	 Cape Seashore Vegetation
○ Alternative 2 - BMH	 Hopefield Sand Fynbos
■ Alternative 1 - Existing WACS CLS	 Langebaan Dune Strandveld
— Alternative 1- Existing WACS Front haul	 Saldanha Flats Strandveld
— Preferred offshore alignment	
 Protected Dune	

18°9'36"E 18°10'12"E 18°10'48"E 18°11'24"E 18°12'0"E

Mapping and layout by **S3 Technologies** Spatial Systems Solutions

For Giles Churchill **acer AFRICA**



Co-Ordinate system
Projection: Transverse Mercator
Datum: Hartbeeshoek 1994
Ellipsoid: WGS84
Meridian: Lo19°
Units: Metres

2AFRICA Landing

Yzerfontein

Onshore alignment with alternatives, landing point and Veg Map

when printed at A4 (297 x 210 mm)
Date of print: 13 May 2021

Distance notes
1 nautical mile = 1.852km
1km = 0.539957nmi

18°9'36"E 18°10'12"E 18°10'48"E 18°11'24"E 18°12'0"E

33°18'36"S
33°19'12"S
33°19'48"S
33°20'24"S
33°21'0"S
33°21'36"S

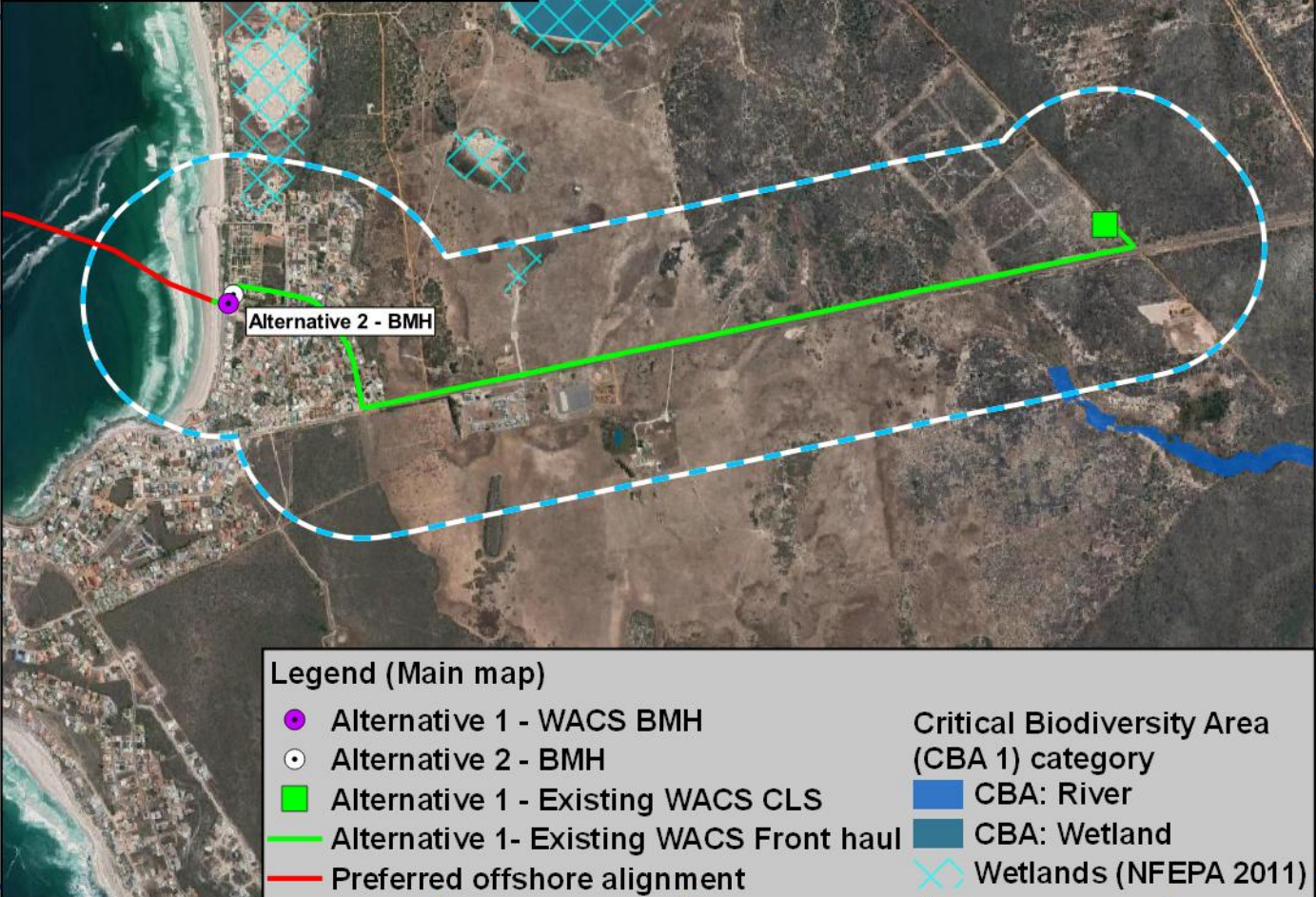
33°18'36"S
33°19'12"S
33°19'48"S
33°20'24"S
33°21'0"S
33°21'36"S

Locality Map



Legend (Locality map)

- Preferred offshore alignment
- Territorial Waters of 12 nautical miles
- Exclusive Economic Zone (EEZ) of 200 nautical miles
- National boundary



Legend (Main map)

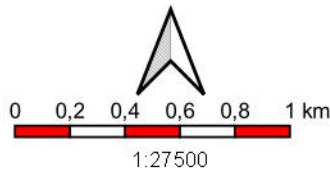
- Alternative 1 - WACS BMH
- Alternative 2 - BMH
- Alternative 1 - Existing WACS CLS
- Alternative 1 - Existing WACS Front haul
- Preferred offshore alignment
- Critical Biodiversity Area (CBA 1) category
- CBA: River
- CBA: Wetland
- ▨ Wetlands (NFEPA 2011)

18°9'36"E 18°10'12"E 18°10'48"E 18°11'24"E 18°12'0"E

Mapping and layout by



For Giles Churchill



when printed at A4 (297 x 210 mm)
Date of print: 13 May 2021

Co-Ordinate system
Projection: Transverse Mercator
Datum: Hartebeeshoek 1994
Ellipsoid: WGS84
Meridian: Lo19°
Units: Metres

Distance notes

1 nautical mile = 1.852km
1km = 0.539957nmi

2AFRICA Landing

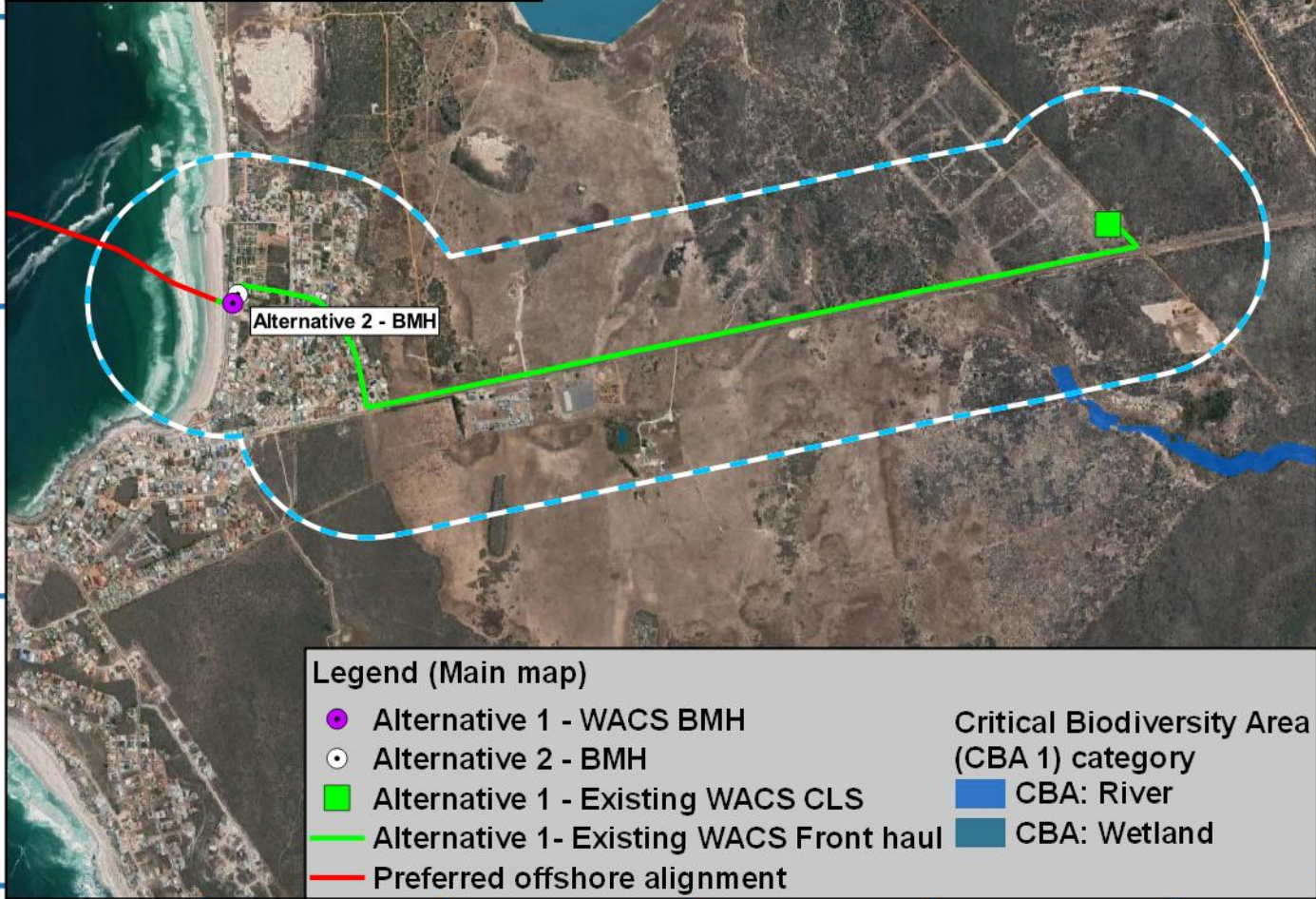
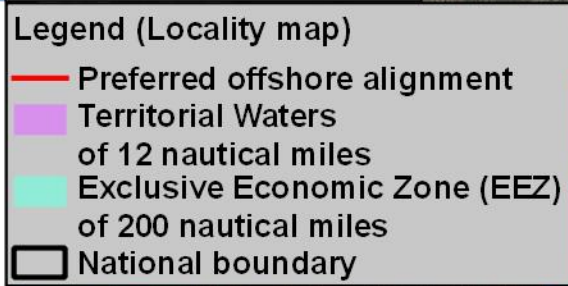
Yzerfontein

Onshore alignment with alternatives, landing point and Wetland data

18°9'36"E 18°10'12"E 18°10'48"E 18°11'24"E 18°12'0"E

33°18'36"S
33°19'12"S
33°19'48"S
33°20'24"S
33°21'0"S
33°21'36"S

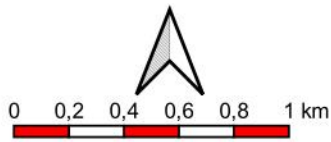
33°18'36"S
33°19'12"S
33°19'48"S
33°20'24"S
33°21'0"S
33°21'36"S



18°9'36"E 18°10'12"E 18°10'48"E 18°11'24"E 18°12'0"E

Mapping and layout by

For Giles Churchill



when printed at A4 (297 x 210 mm)
Date of print: 13 May 2021

Co-Ordinate system
Projection: Transverse Mercator
Datum: Hartebeeshoek 1994
Ellipsoid: WGS84
Meridian: Lo19°
Units: Metres

Distance notes

1 nautical mile = 1.852km
1km = 0.539957nmi

2AFRICA Landing

Yzerfontein

Onshore alignment with alternatives, landing point and Wetland data

18°5.130'E 18°6.923'E 18°8.717'E 18°10.511'E 18°12.304'E 18°14.098'E

33°12.693'S
33°14.487'S
33°16.280'S
33°18.074'S
33°19.867'S
33°21.661'S
33°23.455'S
33°25.248'S

33°12.693'S
33°14.487'S
33°16.280'S
33°18.074'S
33°19.867'S
33°21.661'S
33°23.455'S
33°25.248'S

Legend (Main map)

- Alternative 1 - WACS BMH
- Alternative 2 - BMH
- Alternative 1 - Existing WACS CLS
- Alternative 1 - Existing WACS Front haul
- Preferred offshore alignment

Critical Biodiversity Area (CBA 1) category

- CBA: River
- CBA: Terrestrial
- CBA: Wetland

Ecological Support Area (ESA 1) category

- ESA: Aquatic
- ESA: Terrestrial

Ecological Support Area (ESA 2) category

- ESA2: Restore from other land use
- ESA2: Restore from plantation or high density IAP
- Other Natural Area (ONA)
- Protected areas (PA)
- Protected Dune
- Reasons

SANBI Vegmap (2018 Beta)

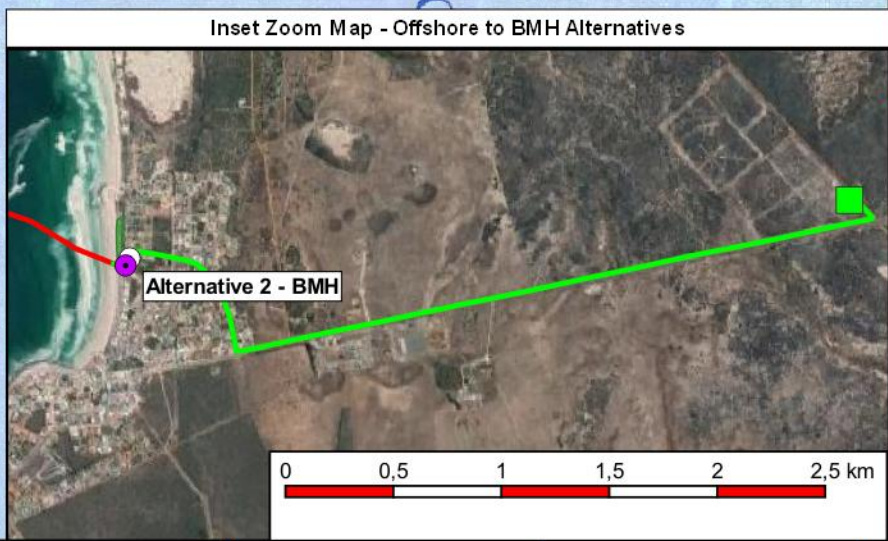
- Cape Seashore Vegetation
- Hopefield Sand Fynbos
- Langebaan Dune Strandveld
- Saldanha Flats Strandveld

Legend (Locality map)

- Preferred offshore alignment
- Territorial Waters of 12 nautical miles
- Exclusive Economic Zone (EEZ) of 200 nautical miles
- National boundary



Lon: 18°9.68500'E
Lat: 33°20.39800'S



18°5.130'E 18°6.923'E 18°8.717'E 18°10.511'E 18°12.304'E 18°14.098'E

33°12.693'S
33°14.487'S
33°16.280'S
33°18.074'S
33°19.867'S
33°21.661'S
33°23.455'S
33°25.248'S

33°12.693'S
33°14.487'S
33°16.280'S
33°18.074'S
33°19.867'S
33°21.661'S
33°23.455'S
33°25.248'S

Legend (Main map)

- Alternative 1 - Existing WACS Front haul
- Preferred offshore alignment
- Alternative 1 - WACS BMH
- Alternative 2 - BMH
- Alternative 1 - Existing WACS CLS
- Landing site and onshore alignment buffer (500m)
- Wetlands (NFEPA 2011)
- River lines (NGI)

Critical Biodiversity Area (CBA 1) category

- CBA: River
- CBA: Terrestrial
- CBA: Wetland

Ecological Support Area (ESA 1) category

- ESA: Aquatic
- ESA: Terrestrial

Ecological Support Area (ESA 2) category

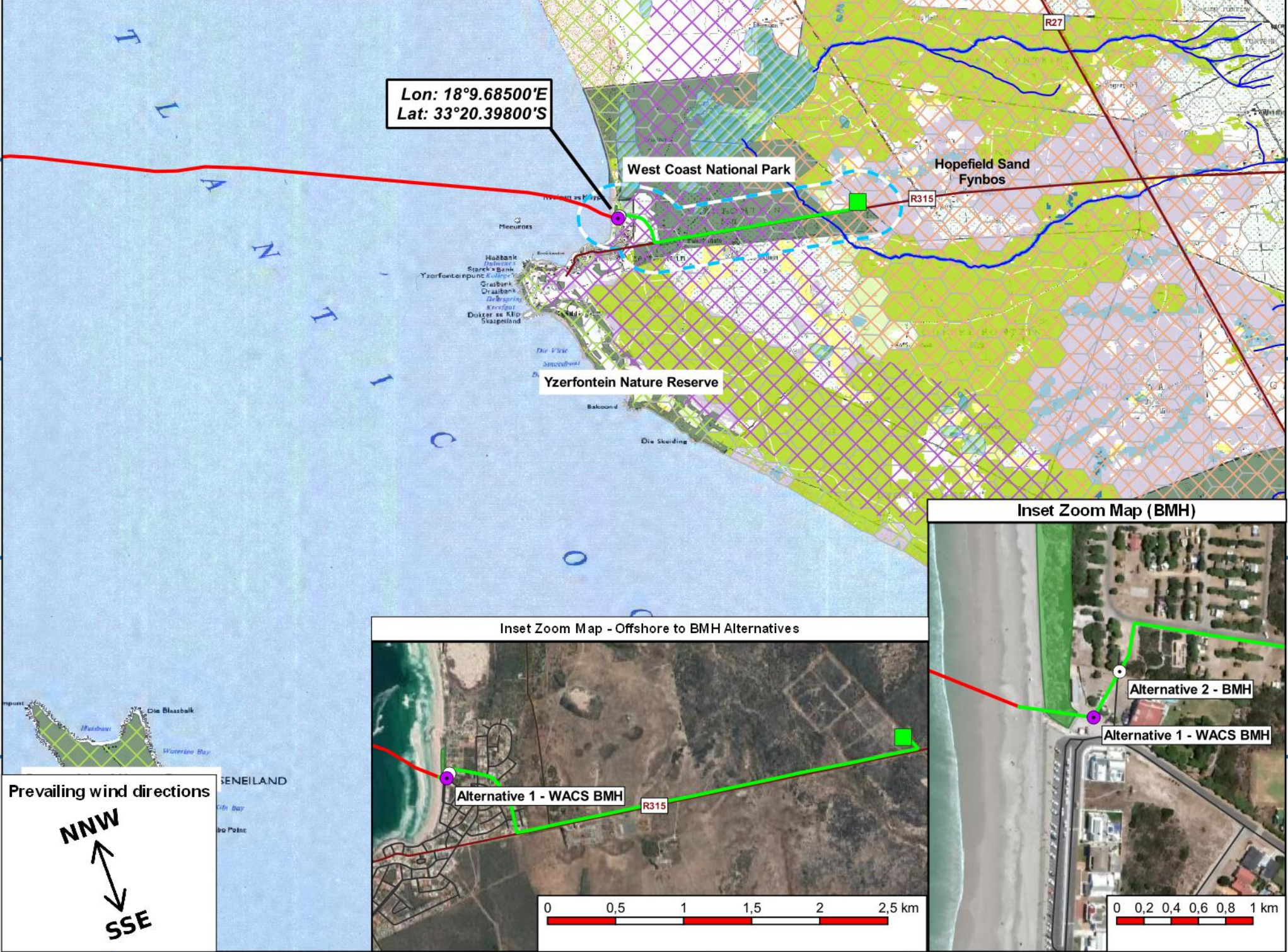
- ESA2: Restore from other land use
- ESA2: Restore from plantation or high density IAP
- Other Natural Area (ONA)
- Protected areas (PA)
- Protected Dune
- Reasons

SANBI Vegmap (2018 Beta)

- Cape Seashore Vegetation
- Hopefield Sand Fynbos
- Langebaan Dune Strandveld
- Saldanha Flats Strandveld

Legend (Locality map)

- Preferred offshore alignment
- Territorial Waters of 12 nautical miles
- Exclusive Economic Zone (EEZ) of 200 nautical miles
- National boundary



Lon: 18°9.68500'E
Lat: 33°20.39800'S

