

Datum: 4 November 2022

Geagte Belangstellende en Geaffekteerde Party,

**KENNISGEWING VAN 'N OMGEWINGSIMPAKSTUDIE EN**

**OPKOMENDE PUBLIEKE VERGADERINGS**

**NABAS DIAMANTE (EDMS) BPK DOEN AANSOEK VIR 'N MYNREG,  
OMGEWINGSMAGTIGING, AFVALBESTUURS LISENSIE ASOOK WATERGEBRUIK  
LISENSIE VIR DIE VOORGESTELDE OPRIG EN BEDRYF VAN GRASDRIFT DIAMANT  
MYN OP DIE LINKER OEWER VAN DIE ORANJERIVIER OP DIE PLAAS NO. 11  
(GRASDRIFT), RICHTERSVELD MUNISIPALITEIT, NAMAKWA DISTRIK, NOORD-KAAP  
PROVINSIE, SUID-AFRIKA**

**DMHE Verw. no. NCS 30/5/1/2/2/10211 MR**

Naledzi Omgewingskonsultante (Edms) Bpk is aangestel as die onafhanklike omgewingsevaluerings-praktisyn (OEP) om die Omgewingsimpakstudie (OIS) proses uit te voer ter ondersteuning van Nabas Diamante (Edms) Bpk se aansoek vir 'n mynreg, omgewingsmagtiging asook 'n afvalbestuurlisensie vir die oprig en bedryf van die voorgestelde Grasdrift myn op die Restant van die Plaas Richtersveld No. 11 (Grasdrift).

Die aansoek gebied is 2692 ha groot en geleë op die linkeroewer van die Oranjerivier binne die Ai Ais Richtersveld Nasionale Park, 140km oos van Alexanderbaai en 250km noord van Springbok binne Richtersveld plaaslike munisipaliteit in die jurisdiksie van die Namakwa Distrik van die Noord-Kaap Provinsie van Suid Afrika.

Dit is 'n vereiste, as deel van die OIS publieke deelname proses, om Belanghebbende en Geaffekteerde Partye (B&GPe) in te lig oor die voorgestelde projek en omgewingsmagtiging prosesse sodat ons u kommentaar en aanbevelings oor die projek kan in win.

Hierdie brief dien as kennisgewing van die projek en vestig u aandag op die volgende:

- Die geleentheid om te registreer as 'n Belangstellende en Geaffekteerde Party (B&GP);
- Die beskikbaarheid van 'n Agtergrondinligtingsdokument (AID) vir kommentaar
- Vier opkomende publieke vergaderings op 16 en 17 November 2022 in Eksteenfontein, Lekkersing, Kuboes and Sanddrift.

**1. Registreer as 'n B&GP**

U word hiermee uitgenooi om te registreer as 'n B&GP op die projek en aan die proses deel te neem deur kommentaar te lewer deur die Registrasie en Kommentaarblad wat by die aangehegde Agtergrondsinligting-dokument (AID) ingesluit is, te voltooi. .

**2. Agtergrondsinligting-dokument (AID) beskikbaar vir publieke kommentaar**

Die aangehegde AID verskaf 'n oorsig van die Omgewingsimpakstudie proses en nooi B&GPe uit om deel te neem en te registreer vir die proses. 'n Tydperk van 30 dae vanaf 4 November tot 5 Desember 2022 word voorsien om enige kommentaar of besware aan te teken i.v.m die aansoek.

Die AID en gepaardgaande Registrasie- en Insae vorm is beskikbaar in Engels en Afrikaans vanaf die Naledzi-webwerf by [www.naledzi.co.za/publicdocuments](http://www.naledzi.co.za/publicdocuments). Alternatiewelik kan u die OEP skakel vir 'n afskrif van die AID. Gedrukte kopieë is ook beskikbaar by die volgende openbare biblioteke in die projekgebied:

- Kuboes, Eksteenfontein, Lekkersing, Sanddrift en Port Nolloth; asook
- Alexander Bay Richtersveld GEV Kantore

Registreer en rig u kommentaar tesame met u naam, kontakbesonderhede en belang in die projek aan Marissa Botha (Naledzi) na [botham@naledzi.co.za](mailto:botham@naledzi.co.za) of skakel ons by 084-226-5584 vir meer inligting. Registrasies en insae moet ingestuur word teen **5 Desember 2022**. Neem asseblief ook kennis dat slegs geregistreerde B&GPe in kennis gestel sal word van enige toekomstige projekkenisgewings/inligting na verstryking van hierdie registrasietydperk.

### **3. Kennisgewing van publieke vergaderings op 16 en 17 November 2022.**

B&GPe word ook genooi om die onderstaande geskeduleerde openbare vergaderings vir die projek by te woon waar die OEP 'n oorsig sal gee van die projek asook die OIS-proses wat gevolg word. Registrasie- en kommentaarblaaie sal ook beskikbaar wees en kan by die vergaderinglokaal voltooi word.

<b>Datum</b>	<b>Vergaderinglokaal</b>	<b>Tyd</b>
16 November 2022	LEKKERSING SAAL	10H00
16 November 2022	EKSTEENFONTEIN SAAL	14H00
17 November 2022	KUBOES V GK KERK SAAL	10H00
17 November 2022	SANDDRIFT SAAL	14H00

Registrasie- en Kommentaarvorms sal ook by die vergaderlokaal beskikbaar wees en kan na afloop van die vergaderings voltooi en by Naledzi ingedien word.

#### **Wat is volgende?**

Alle kommentaar of besware ontvang gedurende die publieke registrasie en kommentaar tydperk, sal vervat word in 'n Insae- en Terugvoerverslag (ITV) en sal ons daarvolgens terugvoer gee.

Ons sal 'n konsep Omvangsbepalings verslag vir die projek voorberei wat vir 30 kalenderdae vir publieke kommentaar beskikbaar gestel sal word. Die ITV-besonderhede sal by die verslag ingesluit word, insluitend enige skriftelike kommentaar. Die verslag en meegaande dokumentasie sal beskikbaar gestel word op die Naledzi-webtuiste en by dieselfde openbare areas as die AID.

Naledzi sal die beskikbaarheid van die konsep Omvangsbepalingsverslag aankondig aan geregistreerde B&GPe deur koerant advertensies, per e-pos/telefonies.

Byvoorbaat dankie vir u deelname.

Vriendelike groete,

A handwritten signature in black ink, appearing to read 'M Botha', with a long horizontal stroke extending to the right.

Marissa Botha (*Pr.Sci.Nat*)  
Naledzi Omgewingskonsultante (Edms) Bpk  
Eenheid 112, the Office Park, Erf 352  
Schoeman Straat, Polokwane, 0700  
Sel: 084 226 5584  
E-pos: [botham@naledzi.co.za](mailto:botham@naledzi.co.za)

Alternatiewelik, skakel die projek OEP:

Prof. Desmond Musetsho by 083-410-1477 of u kan 'n epos stuur aan [dmusetsho@naledzi.co.za](mailto:dmusetsho@naledzi.co.za)

November 2022

## AGTERGRONDSINLIGTING DOKUMENT (AID)

### Doel van hierdie AID

- Verskaf 'n oorsig van die voorgestelde projek en Omgewingsimpakstudie-proses aan enige belanghebbende en/of geaffekteerde partye (B&GPe)
- Gee u die geleentheid as B&GPe om betrokke te raak by die publieke deelname proses vir die projek;
- Bied u die geleentheid om 'n bydrae te lewer oor die aspekte wat ondersoek moet word in die Omvangsbepalings-verslag asook die Omgewingsimpak-verslag
- Bied u die geleentheid om enige kommentare en of besware wat u mag hê oor die projek deur te gee aan die OIS projekspan.

### U kan dit bereik deur:

- Die AID te hersien en te registreer as B&GPe deur die aangehede registrasievorm te voltooi (sien bladsy 10)
- Ons te kontak deur 'n epos te stuur/telefonies met ons te gesels.
- Om kommentaar of besware oor die projek te lewer binne die gegewe tydperk d.w.s. **voor of op 5 DESEMBER 2022.**
- Die vergaderings by te woon op 16 en 17 November 2022 (sien bladsy 8)

**Alle registrasies en insae moet ingehandig wees teen 5 DESEMBER 2022.**

### KONTAK:

Naledzi Omgewingskonsultante  
**Skakel persoon:** Marissa Botha  
Eenheid 112, the Office Park, Erf 352,  
Schoeman Staat, Polokwane, 0699  
**Tel:** 084 226 5584/ 083 410 1477  
**E-pos:** [botham@naledzi.co.za](mailto:botham@naledzi.co.za)  
[www.naledzi.co.za](http://www.naledzi.co.za)

### NABAS DIAMANTE (EDMS) BPK 'Voorgestelde Grasdrift Diamant Delwery'

#### KENNISGEWING VAN 'N OMGEWINGSIMPAKSTUDIE:

**Nabas Diamante (Edms) Bpk doen aansoek vir Omgewingsmagtiging, 'n Afvalbestuurlisensie asook Watergebruiklisensie vir die voorgestelde oprig en bedryf van Grasdrift Diamant Delwery geleë op die linkeroewer van die Oranjerivier op die Restant van Plaas Nr. 11 (Grasdrift), Richtersveld, Namakwa Distrik, Noord-Kaap Provinsie (Suid-Afrika)**

### 1. Projek Agtergrond en Ligging

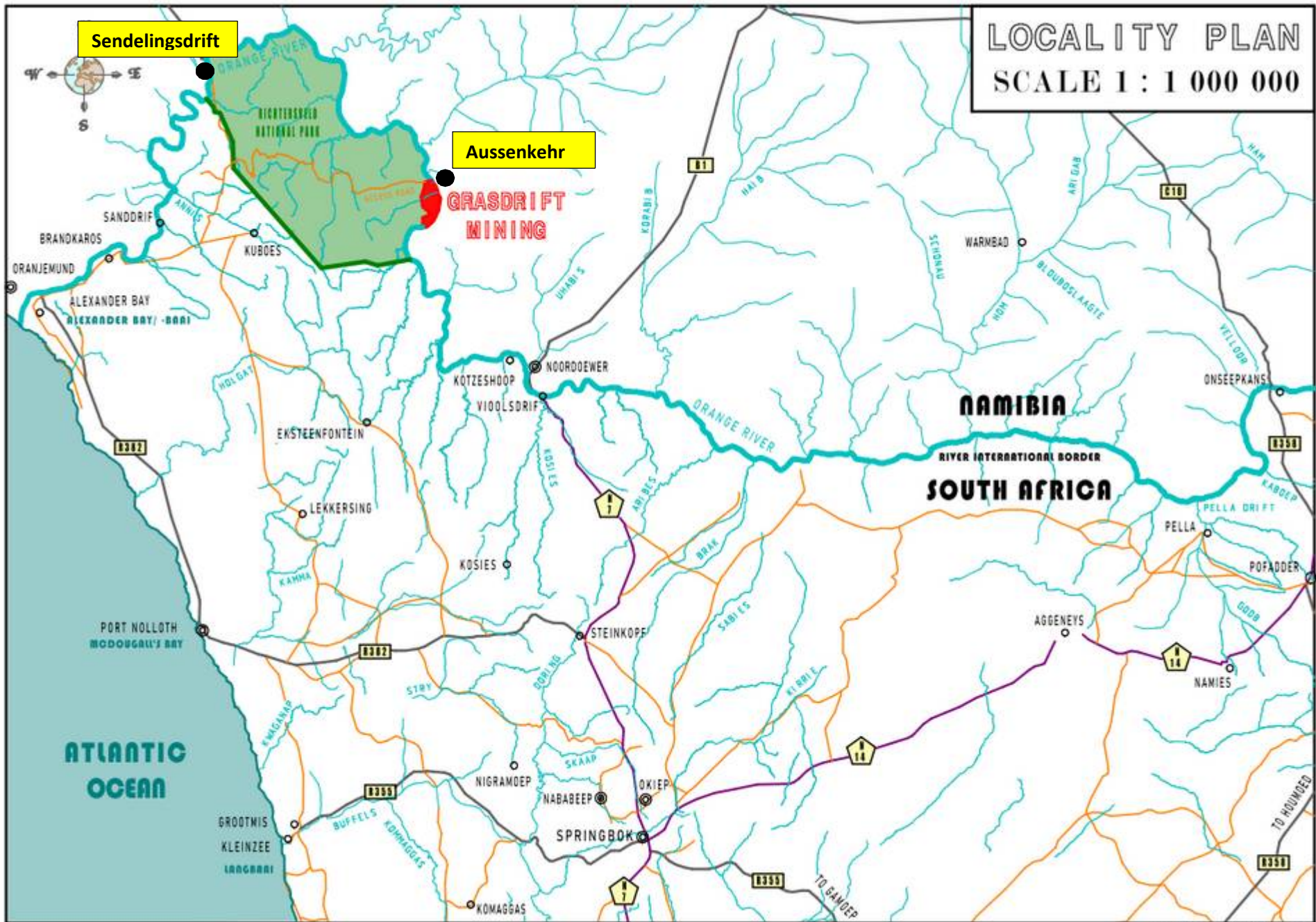
Nabas Diamante (Edms) Bpk (aansoeker) besit tans die prospekteer-reg (NC 30/5/1/1/2/501 PR) vir spoeldiamante op die Restant van die Plaas Richtersveld Nr. 11 (Grasdrift) geleë op die linkeroewer van die Oranjerivier binne die Ai Ais Richtersveld Nasionale Park en het onlangs aansoek gedoen by die Departement van Mineralehulpbronne en Energie (DMHE) vir die mynreg oor dieselfde gebied (**DMRE Ref. NCS 30/5/1/2/2/10211 MR**). Die Richtersveld Nama-gemeenskap, deur Nabas Trust, is 'n direkte aandeelhouer in Nabas Diamante.

Die voorgestelde myreg-gebied is ongeveer 2692 ha groot en geleë 140km oos van Alexanderbaai en 250km noord van Springbok in die Richtersveld plaaslike munisipaliteit binne die jurisdiksie van Namakwa Distriks-munisipaliteit in die Noord-Kaap Provinsie van Suid-Afrika. Toegang tot die mynreg-gebied word verkry deur middel van 'n 80km grondpad deur die Richtersveld Nasionale Park tot by Grasdrift, (Sien **Figuur 1, bladsy 2 vir die Liggingsplan**).

Die eksplorasië werk wat voltooi is in 2019 by Grasdrift, dui daarop dat daar meer as 250, 000 karaat hoëwaarde-diamante beskikbaar is vanaf die mynreg-gebied wat oor 'n mynlewenduur van 30 jaar ontgin kan word deur middel van konvensionele oopgroefmyn metodes d.w.s. laai, vervoer en ontgin deur middel van 'n Sif-en Sorteeraanleg. Die delwery sal bekend staan as 'Grasdrift Diamant Delwery/myn'.

As deel van die proses om die mynregaansoek te verkry, word dit ook vereis van die aansoeker om verdere omgewings magtiging en lisensies te bekom soos in die afdelings hieronder uiteengesit.





Figuur 1: Streeks-Liggingsplan (Verskaf deur 'To the T Drafts' ontwerp vir NDI Geologiese Konsultasie Dienste)

### 3. Projek Beskrywing

Soos voorheen uitgewys, sal die Grasdriфтdelwery, oopgroefmyn metodes gebruik om die diamante te ontgin. Die mynproses sal gemeganiseerde verwydering van die bogrond behels asook die uitgrawe van sand en rotse om by die diamantdraende gruis langs die Oranjeriver te kom. Die gruis sal gelaai and vervoer word na 'n Sifaanleg vanwaar dit verder gesif en later sorteer word in 'n Sorteermasjien. Uitskot material sal op uitskot materialhope gestoor word vir latere gebruik in die rehabilitasie van uitgemynde/versteurde areas.

Die geskatte verwerkingskapasiteit van die delwery sal 300 000 ton/maand wees. Die mynreggebied sal in 3 seksies verdeel word met 'n verwerkingsaanleg opgerig in elke seksie (verwys na Figuur 2 hieronder en Bylae A vir die myn terrein-plan). Van die infrastruktuur wat vir die delwery benodig word, bestaan reeds en is gedurende die prospekter-tydperk opgerig. 'n Bykomende 9.4 ha myn-infrastrukture sal dus opgerig word.

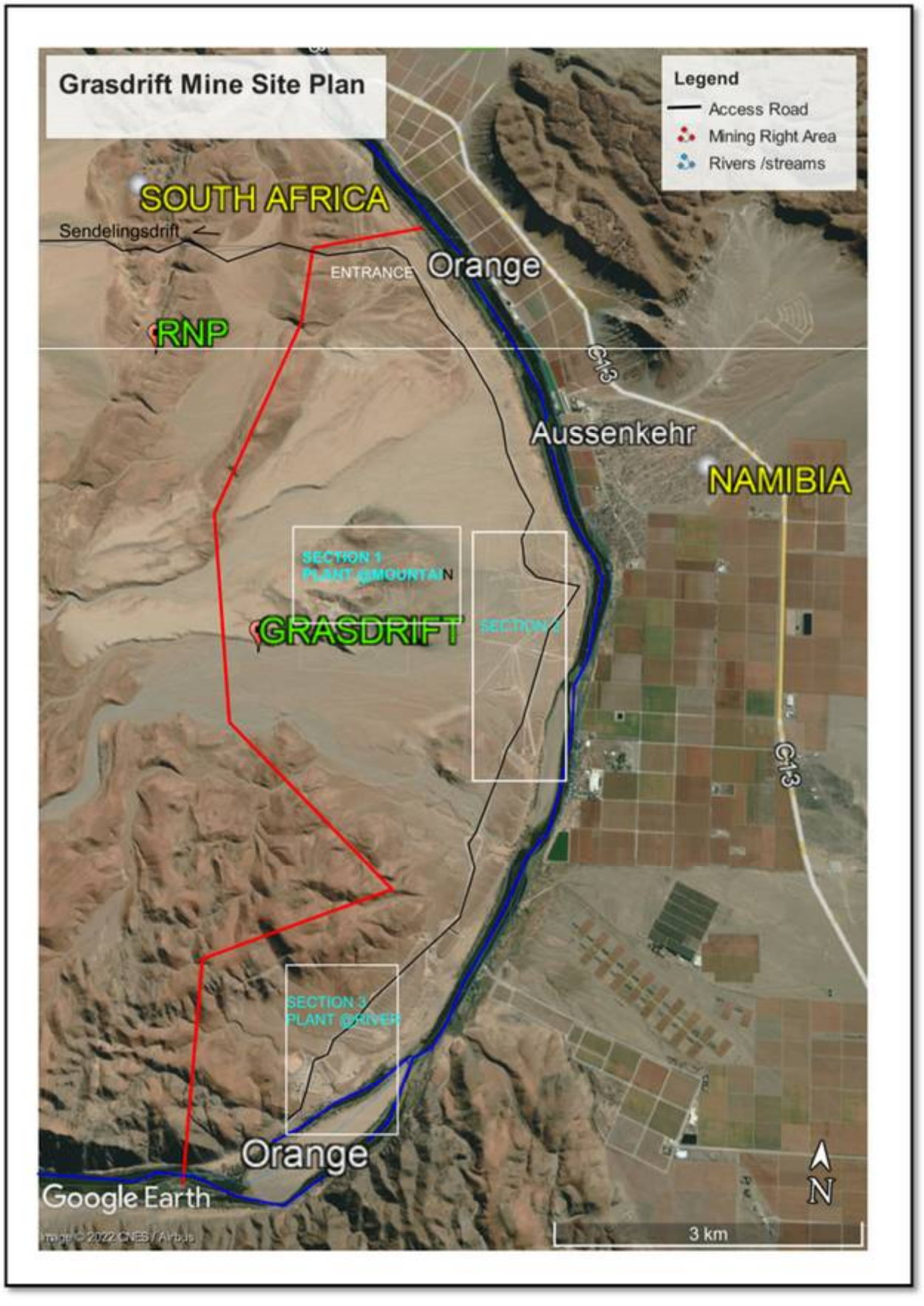
Die infrastruktuur en dienste benodig vir die delwery sluit in:

- Bestaande toegangspaaie sal gebruik word (gevestig gedurende prospekteertydperk).
- Bestaande steen geboue en staal strukture sal opgeknop en hergebruik word as kantore en store.
- < 1ha Parkeer area
- **'n Mineraleverwerkingsaanleg** in elk van die 3 seksies op die mynreggebied bestaande uit:
  - 'n Sifaanleg (Rotary Pan) wat > 0.5ha dek (d.w.s 3 aanlegte @ 0.5ha = 1.5ha)
  - 'n Sorteeraanleg/masjien wat 0.5ha dek (d.w.s 3 aanlegte @ 0.5ha = 1.5ha)
  - 'n Slik / uitsak dam **wat wissel in grootte in elke seksie** d.w.s. 1ha, 1ha en 2.97ha. Die minimum kapasiteit van die slik/uitsakdamme is 110 000m<sup>3</sup>/maand.
  - Die verwerkingsaanleg sal 'n verwerkings kapasiteit van 71 000 ton/maand hê;
  - Sand sal uitgesif word alvorens dit deur die aanleg gaan en 'n geslote stelsel sal gebruik word om slik en watergebruik deur die verwerkingsaanleg te verminder.
- **6 ha Besoedelings-beheerdam**
- **3 Bogrond hope (elk <0.5ha)** vir die tydelike berging sodat dit gebruik kan word vir rehabilitasie van uitgemynde / versteurde areas.
- **23.5 m<sup>3</sup> Dieselstoorplek** (23m<sup>3</sup> tank en 0.5m<sup>3</sup> dieselkarretjie)
- **< 0.5ha Kontrakteurs area**
- Stofbeheer
- Stormwater infrastruktuur

**Benodigde dienste:**

- **Watervereistes:**
  - 270 000m<sup>3</sup> water sal uit die Oranjerivier onttrek word vir die proses asook drinkwater.
    - Drink water sal in JoJo Tenks gestoor word.
    - Proseswater sal in 3 damme gestoor (3x 0.5 ha = 1.5ha)
  - 'n Water-pyplyn sal aangelê word om water vanuit die rivier na die verwerkingsaanlegte te gelei.
  - 'n Gemiddeld van of 80 000 - 100 000m<sup>3</sup>/maand water sal benodig word.
- **Elektrisiteit sal voorsien word deur middel van kragopwekkers** om die aanlegte, woonkwartiere en waterpomp te voorsien van krag.
- **Riool** – Ablusiefasiliteite en 'n kompak Riool-behandelings-aanleg sal opgerig word.





Figuur 2: Mynreggebied (rooi veelhoek) en 3 myn seksies voorgestel op die linker oewer van die Oranjerivier uitgelê op 'n Google Earth lugfoto (Sien Bylae A vir 'n gedetailleerde terreinplan)

## 5. Wetlike Vereistes

Die voorgestelde delwery lei tot die aanvang van verskeie gelysde aktiwiteite nl.

- Staatskennisgewing (SK.) No. 324, 325 en 327 van 7 April 2017 (soos gewysig) wat omgewingsmagtiging vereis ingevolge die 2014 OIS-regulasies (GNR 326) gepubliseer ingevolge die Wet op Nasionale Omgewingsbestuur, 1998 (Wet 107 van 1998) (NOBW); ook
- 'n Aantal reguleerde afvalbestuuraktiwiteite gelys onder GN R. 633 en R. 921 gepubliseer onder die Nasionale Omgewingsbestuur: Afvalwet (Wet 28 van 2008) (NOBW: A) wat 'n afvalbestuurslisensie vereis. Beide aansoeke is onderhewig aan 'n volledige Omvangimpakstudie-proses.

Die volgende gelysde aktiwiteite vereis goedkeuring van DMHE: Springbok Streekskantoor:

**Tabel 1: Moontlike lys van aktiwiteite wat goedkeuring vereis (sal bevestig word gedurende die OIS-proses)**

NOBW OIS Regulasie Staatskennisgewing	Moontlike gelysde aktiwiteite geaktiveer
<ul style="list-style-type: none"> <li>▪ <b>Omgewingsmagtiging</b></li> </ul>	
<b>1 (SK. 327)</b>	Aktiwiteit 12, 19, moontlik 25, 27
<b>2 (SK. 325)</b>	Aktiwiteit 17
<b>3 (SK. 324)</b>	Aktiwiteit 12, 14 en moontlik ook aktiwiteit 10
<b>NOB:A Afvalbestuursaktiwiteite Staatskennisgewing</b>	
<ul style="list-style-type: none"> <li>▪ <b>Afvalbestuurlisensie</b></li> </ul>	
<b>SK. 633</b>	Aktiwiteit 11
<b>SK. 921 (Kategorië A)</b>	Aktiwiteit 10, 12
<b>SK. 921 (Kategorië B)</b>	Aktiwiteit 1 en 10

Nabas sal ook 'n Watergebruiklisensie-aansoek (WGLA) indien by the Departement van Water en Sanitasie (DWS): Oranje bestuursgebied ingevolge artikel 40 van die Nasionale Waterwet (Wet 36 of 1998) (NWW) vir watergebruike soos omskryf in artikel 21 (a), (b) (c), (g) (i) en moontlik ook 21 (j). Die toepaslike watergebruike sluit in:

- S 21a – Ontrekking an water uit die Oranjerivier (270 000m<sup>3</sup>/jaar)
- S 21b – Stoor van water in drie (3) damme
- S21c en i – Mynaktiwiteite binne die gereguleerde area van die Oranjerivier en ander strome/riviere.
- S21g – Oprig en bedryf van 'n kompakte Riool-behandelings-aanleg, drie (3) Slik/Uitsakdamme asook 'n besoedelings beheerdam.

## 6. Omgewingsevaluerings-praktisyn

Naledzi Omgewingskonsultante (Edms) Bpk. is aangestel as die onafhanklike omgewings-evaluerings-praktisyn (OEP) om die OIS-proses en WGLA te onderneem en sal die geïntegreerde openbare deelname proses uitvoer wat aan beide die vereistes van die NOBW en NWW voldoen.

Hierdie AID verskaf aan lede van die publiek inligting rakende die projek en sal die leser in staat stel om :

- Bepaal of hul 'n B&GPe is;
- Die projek te verstaan om ingeligte geldige kommentaar te lewer.
- Die OIS-proses te verstaan om sinvol deel te neem.



## 7. OIS-proses

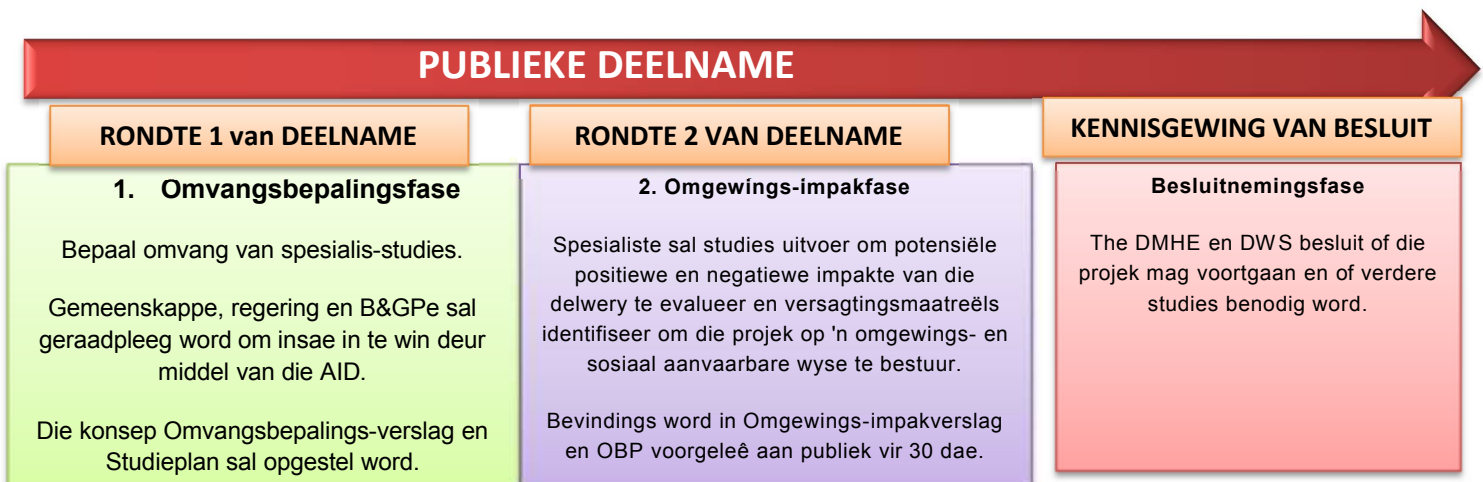
Die OIS-proses is 'n wetlike instrument wat gebruik word om die potensiële omgewingsimpakte van 'n voorgestelde projek te identifiseer, te ondersoek en beveel dan daarvolgens, versagtingsmaatreëls aan om te verseker dat dit beheer/vermy word indien omgewingsmagtiging toegestaan word. Die hoofdoel daarvan is om die DMHE en die publiek in te lig oor die omgewingsevolge van die projek. Die OIS-proses word uitgevoer in oorleg met regulasie 21 – 24 van die 2014 OIS-regulasies (Sk. 326) en bestaan uit drie fases wat vier stappe inligting genereer m.a.w.

- **Omvangsbepalingsfase**
  - Agtergrond Inligtings Dokument (AID-hierdie dokument) om die projek aan te kondig
  - Konsep Omgewingsimpak-bepalings-verslag (OBV)
- **Omgewingsimpak Fase**
  - Konsep Omgewingsimpak-verslae (OIV) en Omgewings bestuursprogram (OBP) insluitend spesialis-studies
  - Mynsluiting en Rehabilitasie Plan
- **Besluitnemingsfase** – DMHE reik 'n besluit uit op die aansoek.

As deel van die Omvangbepalingsfase sal 'n AID-dokument versprei word om te dien as kennisgewing van die aanvang van die OIS-proses, geleentheid om te registreer en aanvanklike kommentaar te lewer. Gedurende hierdie fase sal die potensiële negatiewe en positiewe impakte relevant tot die voorgestelde delwery geïdentifiseer word om die aspekte te bepaal waarop gefokus moet word tydens die Impakfase. Die potensiële impakte sal geïdentifiseer word deur aanvanklike lessenaar-studie, terreinverifikasie, aanvanklike spesialis-insette, insluitend kommentaar ontvang van die publiek en sleutel-kommentaar-owerhede en vorige ervaring van soortgelyke projekte. Die inligting sal gekonsolideer word en in 'n Omvangbepalingsverslag aangebied word en sal onderhewig wees aan 30 dae hersieningtydperk en kommentaar voordat dit aan die DMHE vir goedkeuring voorgelê word.

Sodra die DMHE die Omvangsbepalingsverslag aanvaar word sal die Impakevalueringsfase begin, deur spesialis-studies uit te voer en die konsep Omgewingsimpakverslag (OIV) op te stel wat alle impakte en kwessies wat tydens die Omgewingsbepalingsfase geïdentifiseer is, te evalueer. Die OIV sal 'n oorsig gee van die potensiële impakte, die impakte rangskik en kwantifiseer en versagtings maatreëls voorskryf om negatiewe impakte tot aanvaarbare vlakke te verminder.

'n Ouditbare Omgewingsbestuursprogram (EBP) sal ook voorberei word wat omgewings bestuur spesifikasies aanbeveel vir die konstruksie, bedryf, sluiting en rehabilitasie van die delwery wat deur Nabas Diamonds waargeneem moet word. Die verslae sal vrygestel word vir 30 dae publieke hersienings tydperk en kommentaar gevolg deur 'n tweede rondte van publieke deelname (asook vergaderings). Die publieke insette sal by die verslae bygewerk word en aan DMHE voorgelê word vir besluitneming. DMHE sal binne 107 dae 'n besluit oor die aansoek neem. B&GPe sal van die besluit in kennis gestel word en 'n 20-dae appèl-tydperk op die besluit gegun word.



Figuur 3: Basiese Illustrasie van die OIS-proses

## 8. Potensiële impakte en Spesialis-studies

Spesialis-studies is 'n deurslaggewende komponent van die OIS-proses, en vorm die basis van die geïntegreerde OIV en OBP vir die voorgestelde projek. Gebaseer op die aard van die projek en DFFE GIS-gebaseerde 'National web-based Environmental Screening Tool' word verskeie spesialis-studies vereis en sal as deel van die OIS-proses aangevra word om die terreinaspekte en potensiële omgewings- en sosiale impakte relevant tot die projek te evalueer. Die volgende spesialis-studies sal onderneem word:

- Erfenisimpakevaluering en lessenaar Paleontologiese assessering
- Hidrologiese-impakstudie insl.
  - Mynwater verbruikbalans
  - Vloedlynbepaling
  - Konseptuele Stormwater bestuursplan
- Geohidrologiese-impakstudies
- Akwatiese Biodiversiteit en Vleiland-impak bepaling.
- Terrestriële Biodiversiteit Assessering (Fauna, Flora, Avifauna)
- Grond, Landboupotensiaal, Grondgebruikvermoë studie
- Hidropedologie-assesering
- Geraas, Luggehalte (stof), Visuele impakstudies
- Sosio-ekonomiese impak bepaling
- Gemeenskaps gesondheid studie

## 9. Publieke Deelname

Publieke deelname is 'n sleutelvereiste van die OIS-proses en moet uitgevoer word in ooreenstemming met die NOBW OIS-regulasies (Regulasie 39-44). Die doel van die ODP is om B&GPe te betrek en 'n geleentheid te bied om hul menings oor die omgewingsimpakte van die aansoek te lig. Alle publieke kommentaar en sienings oor die impakte/projek word in the OIS-proses gedokumenteer en daarop gereageer asook in omgewingsverslae geïnkorporeer vir oorweging deur DMHE. Dit is dus belangrik dat relevante B&GPe vanaf die begin van die proses geïdentifiseer en by die ODP betrek word om die fokus van die OIS-prosesplan te help bepaal. Naledzi se openbare deelname plan vir die projek word hieronder uiteengesit.

Drie rondes van publieke deelname word as deel van die OIS-proses beplan om aan beide die NOBW- en NWW-vereistes te voldoen.

### Plan

#### 1ste rondte - B&GP-registrasie, AID beskikbaar vir 30 dae hersieningstydperk en kommentaar

**November 2022** – Die projek sal op die volgende wyse aan die publiek bekend gemaak word:

- 4 – 11 November 2022:
  - Koerant advertensie in die Plattelander en Gemsbok
  - Plasing van terrein kennisgewings;
- 4 November to 5 Desember 2022:
  - Vrstel van 'n AID (hierdie dokument) vir 30 dae publieke hersienings tydperk en kommentaar in die projekgebied en op die Naledzi-webtuiste ([www.naledzi.co.za/publicdocuments](http://www.naledzi.co.za/publicdocuments)) onder die opskrif 'Voorgestelde Grasdrift-myn.
  - 16 – 17 November 2022: Opkomende openbare vergaderings (Sien afdeling 9.1 vir meer inligting)

## 2de Rondte – Vrystel van Konsep Omvangs-bepalings-verslag vir 30-dae hersienings tydperk en kommentaar

### Januarie tot Februarie 2023

Die tweede rondte van publieke deelname sal die volgende behels:

- Plasing van 'n koerant kennisgewing in dieselfde koerante as gebruik in rondte 1
- E-pos kennisgewing oor die beskikbaarheid van die konsep Omvangs-bepalings-verslag vir 30-dae publieke hersieningstydperk en kommentaar gedurende Januarie 2023.
- Plaas die Konsep Omvangs bepalingverslag vir publieke hersiening op die Naledzi-webtuiste en in die projekgebied by dieselfde lokale as die AID.
- Sodra die hersieningstydperk verstryk, sal die verslag opgedateer word om publieke insette te inkorporeer en sal aan die begin van Februarie 2023 voorgelê word aan DMRE om te aanvaar.
- B&GPe sal in kennis gestel word sodra die Omvangsbepalingsverslag aanvaar is deur die DMHE en die Omgewings impakfase kan begin. Dit sal heel moontlik volg in April 2023.

## 3de Rondte – Vrystel van konsep Omgewings impak verslag vir 30-dae publieke hersienings tydperk

### Junie – Julie 2023

Die 3de rondte sal die volgende behels:

- Plasing van 'n derde rondte van koerant kennisgewings
- E-pos van kennisgewingsbriewe aan geregistreerde B&GPe van die beskikbaarheid van die konsep OIV & OBP;
- Besikbaarheid van Konsep-OIV & OBP vir publieke hersiening en kommentaar by dieselfde openbare lokale as die AID- en Omvangs bepaling verslag en plasing op die Naledzi-webtuiste.
- 'n Tweede rondte publieke vergaderings sal gehou word, waarin die bevindinge van die OIV & OBP aangebied sal word.

## 9.1 Komende Publieke Vergaderings

B&GPe word ook genooi om die onderstaande opkomende publieke vergaderings vir die projek by te woon waar die OEP 'n oorsig sal gee van die projek asook die OIS-proses wat gevolg word. Registrasie- en kommentaarblaai sal ook beskikbaar wees en kan by die vergaderinglokaal voltooi word.

**Tabel 2: Opkomende openbare vergaderings**

Datum	Lokaal	Tyd
16 November 2022	LEKKERSING SAAL	10H00
16 November 2022	EKSTEENFONTEIN SAAL	14H00
17 November 2022	KUBOES VGK KERK SAAL	10H00
17 November 2022	SANDDRIFT SAAL	14H00

Registrasie- en Kommentaarblaai sal ook by die vergaderlokaal beskikbaar wees en kan na afloop van die vergaderings voltooi en by Naledzi ingedien word. Geteikende vergaderings sal ook gehou word met sleutelkommentaar owerhede en belanghebbendes soos vereis gedurende die loop van die OIS-proses.

## 10. Hoe kan u betrokke raak?

U word uitgenooi om as 'n Belangstellende en Geaffekteerde Party (B&GP) vir 30 dae, vanaf 4 November tot 5 Desember 2022, te registreer. Die AID is tans beskikbaar vir hersiening en indiening van kommentaar oor die voorgestelde aansoeke.

U kan die komende openbare vergaderings op 16 en 17 November 2022 bywoon om vrae van duidelikheid te vra en om meer projekinligting te bekom.

B&GPe word versoek om asseblief hul kommentaar tesame met hul naam, kontakbesonderhede en 'n aanduiding van enige direkte besigheids-, finansiële, persoonlike of ander belang wat hulle in die aansoek het, aan die kontakpersoon hieronder te verskaf, binne die gespesifiseerde tydperk.



Naledzi Omgewingskonsultante (Edms) Bpk

Eenheid 112, the Office Park, Erf 352, Schoeman Straat, Polokwane, 0699

Skakel: Marissa Botha / Desmond Musetsho

E-posl: [botham@naledzi.co.za](mailto:botham@naledzi.co.za) / [dmusetsho@naledzi.co.za](mailto:dmusetsho@naledzi.co.za)

Tel: +27 84-226-5584 / +27 83-410-1477



**REGISTRASIE EN KOMMENTAARBLAD**

**KENNISGEWING VAN 'N OMGEWINGSIMPAKSTUDIE PROSES EN  
PUBLIEKE DEELNAME PROSES**

**AANSOEK OM OMGEWINGSMAGTIGING VIR 'N MYNREG,  
AFVALBESTUURSLISENSIE ASOOK 'N WATERGEBRUIKS LISENSIE AANSOEK VIR  
DIE VOORGESTELDE GRASDRIFT DIAMANT DELWERY, LINKER OEWER VAN DIE  
ORANJERIVIER OP DIE RESTANT VAN DIE PLAAS NR. 11 (GRASDRIFT),  
RICHTERSVELD, NAMAKWA DISTRIK, NOORD-KAAP PROVINSIE (SUID-AFRIKA)  
DMRE Ref. NCS 30/5/1/2/2/10211 MR**

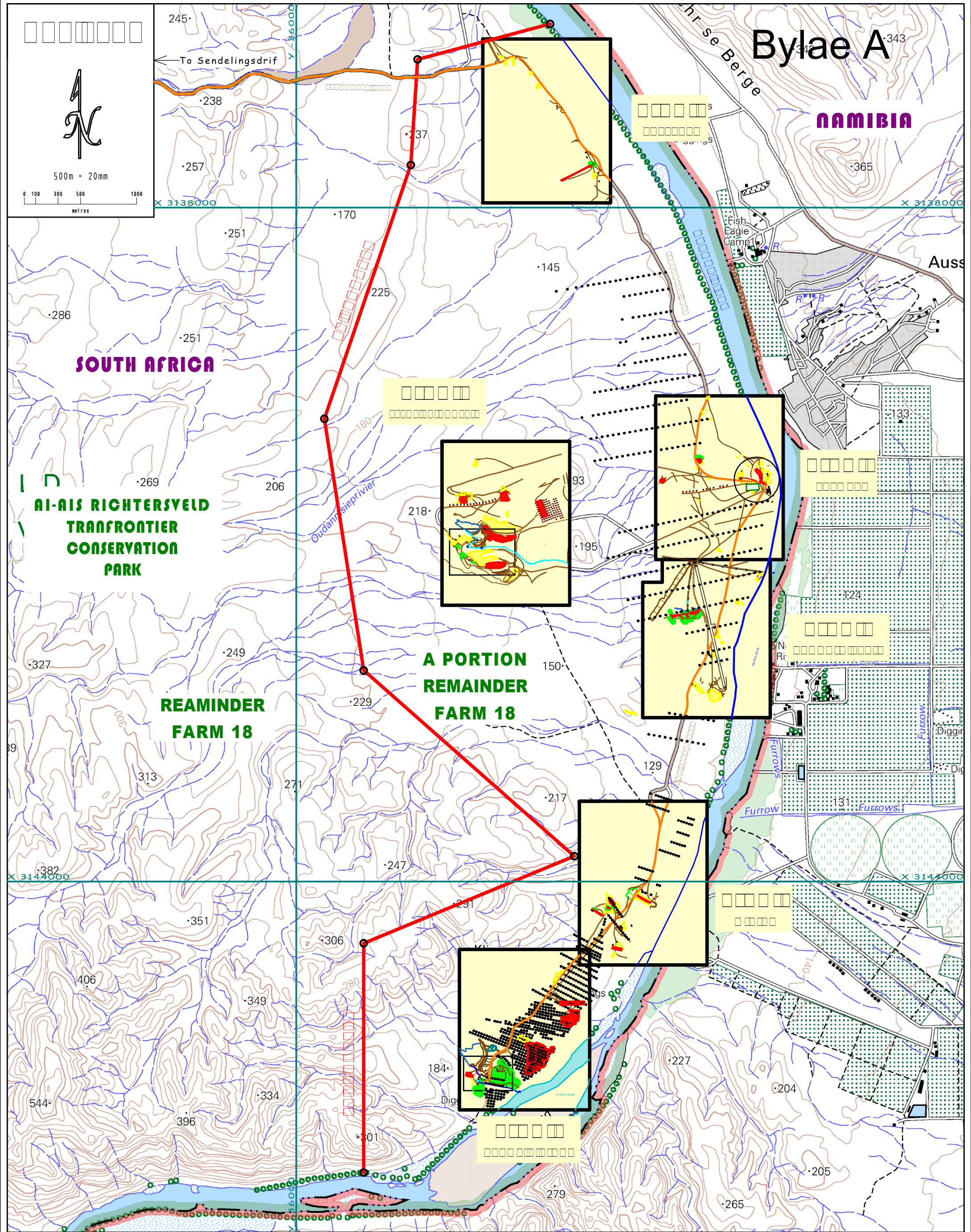
**Naledzi Omgewingskonsultante (Edms) Bpk**  
Skakel: Marissa Botha  
Eenheid 112, the Office Park, Erf 352  
Schoeman Straat, Polokwane, 0699, Suid-Afrika  
Skakel: 084 226 5584  
E-pos: [botham@naledzi.co.za](mailto:botham@naledzi.co.za)  
[www.naledzi.co.za](http://www.naledzi.co.za)

<b>TITEL (Prof/Mnr, Mev)</b>		<b>NAAM</b>	
<b>VAN</b>			
<b>POSISIE (bv. Direkteur, Eienaar, Sekretaresse)</b>			
<b>ORGANISASIE</b>			
<b>POS ADRES</b>		<b>POS KODE</b>	
<b>TEL NO:</b>		<b>SEL NO:</b>	
<b>FAKS NO:</b>		<b>E-POS:</b>	
<b>BELANG IN DIE SAAK:</b>			
<b>INSAE / BESWARE/BEKOMMERNISSE (Gebruik asseblief 'n aparte bladsy indien nodig)</b>			

Voeg asseblief die volgende van my kollegas/bure by jul lys van B&GPe:

<b>Naam</b>	<b>Organisasie:</b>		
<b>Kontak besonderhede:</b>			
<b>Adres:</b>			
<b>Tel:</b>	<b>Faks:</b>	<b>Sel:</b>	
<b>E-pos:</b>			





Bylae A

NAMIBIA

SOUTH AFRICA

AI-AIS RICHTERSVELD  
TRANFRONTIER  
CONSERVATION  
PARK

REAMINDER  
FARM 18

A PORTION  
REMAINDER  
FARM 18

**GRASDRIFT MINING**

**KEY PLAN**

**WGS84 DATUM SURVEY SYSTEM LO17**

SCALE 1 : 30 000

**LEGEND:**

PROSPECTING BORE HOLES	• • •	MINE ROAD	———
PROSPECTING PIT & DUMP	● ● ●	SECONDARY ROAD	———
MINED	■ ■ ■	WATER	———
DISTURBED	■ ■ ■		
RAMP	▤ ▤ ▤		
DUMPS	■ ■ ■		



Date: 4 November 2022

Dear Stakeholder,

**NOTICE OF AN ENVIRONMENTAL IMPACT ASSESSMENT PROCESS AND  
SCHEDULED PUBLIC MEETINGS**

**RE: FOR AN APPLICATION FOR ENVIRONMENTAL AUTHORISATION, WASTE  
MANAGEMENT LICENSE AND WATER USE LICENSE BY NABAS DIAMONDS (PTY) LTD  
FOR THE PROPOSED DEVELOPMENT AND OPERATION OF GRASDRIFT DIAMOND  
MINE ON THE LEFT BANK OF THE ORANGE RIVER ON THE REMAINDER OF FARM  
NO. 11 (GRASDRIFT), RICHTERSVELD LOCAL MUNICIPALITY, NAMAKWA DISTRICT  
NORTHERN CAPE PROVINCE**

**DMRE Ref no. NCS 30/5/1/2/2/10211 MR**

Naledzi Environmental Consultants (Pty) Ltd have been appointed as the independent environmental assessment practitioner (EAP), to conduct an Environmental Impact Assessment (EIA) process in support of Nabas Diamonds (Pty) Ltd's mining right application for alluvial diamonds and associated applications for environmental authorisation and a waste management license over the Remainder of the Farm No. 11 (Grasdrift).

The application area is 2692 ha in extent and located on the left bank of the Orange River within the Ai Ais Richtersveld National Park, 140km east of Alexander Bay and 250km north of Springbok in the Richtersveld Local Municipality within the Namakwa District Municipality in the Northern Cape Province of South Africa. The mining operation will be known as 'Grasdrift Mine'.

This notification letter serves to inform you, in terms of Regulation 41 (c) of the EIA Regulations of 2014 (GN R. 326, as amended on 7 April 2017) published under the National Environmental Management Act, 1998 (Act 107 of 1998), the Mineral and Petroleum Resources Development Act, 2002 (Act 22 of 2002) and the National Environmental Management: Waste Act (Act 28 of 2008) (NEM: WA) of the commencement of an EIA and public participation process for the 'Grasdrift Mine' project.

As part of the public participation process, we are required to inform Stakeholders / Interested and Affected Parties (I&APs) about the proposed project to solicit their views, comments and recommendations on the project.

We, therefore, draw your attention to the following:

1. An invitation to register as an Interested and Affected Party (I&AP)
2. The availability of a Background Information Document (BID) for comment
3. Four scheduled public meetings in the project area i.e Kuboes, Sanddrift, Lekkersing and Eksteenfontein.

## **1. Invitation to Register as a Stakeholder / I&AP**

You are hereby invited to register as a Stakeholder / I&AP on the project and to participate in the process by completing the enclosed Comments and Registration Form sheet included with the attached BID.

## **2. Availability of Background Information Document (BID) for public review**

The enclosed BID provides an overview of the EIA process and public participation process being followed and invites stakeholders/I&APs to participate and register for the process. A period of 30 days from **4 November to 5 December 2022** is provided to review the BID and submit comments and concerns regarding the application.

The BID and associated Registration and Comment Form, are also available electronically from the Naledzi website at [www.naledzi.co.za/publicdocuments](http://www.naledzi.co.za/publicdocuments) under project heading 'Proposed Grasdrift Mine'. Printed copies of the BID are also available at the following venues in the project area:

- Public Libraries at:
  - Kuboes
  - Eksteenfontein
  - Lekkersing
  - Sanddrift
  - Port Nolloth
- Alexander Bay CPA Offices

Please send your comments together with your name, contact details and interest in the project to Marissa Botha (Naledzi) at [botham@naledzi.co.za](mailto:botham@naledzi.co.za) or contact us on 084-226-5584 for more information. Registrations and comments must be submitted **on or before 5 December 2022**.

## **3. Notice of Scheduled Public Meetings on 16 and 17 November 2022.**

I&APs are invited to attend the below scheduled public meetings for the project where Naledzi will give an overview of the project and EIA process being followed. Registration and Comment Sheets will also be available and can be completed at the meeting venues.

<b>Date</b>	<b>Venue</b>	<b>Time</b>
16 November 2022	LEKKERSING HALL	10H00
16 November 2022	EKSTEENFONTEIN HALL	14H00
17 November 2022	KUBOES V GK CHURCH HALL	10H00
17 November 2022	SANDDRIFT HALL	14H00

Registration and Comments forms will also be available at the meeting venue and can be completed and submitted to Naledzi after the meeting.



### **What's next?**

All comments and issues received during the public registration period on the BID and at public meetings will be incorporated into an Issues and Response Report (IRR) and will be responded to.

We will prepare a draft Scoping Report for the project which will be made available for public review for 30 calendar days. The IRR details will be incorporated to the Draft Scoping Report including any written submissions. The report and supporting documentation will be made available on the Naledzi website and at the same public venues as the BID.

The availability of the draft Scoping Report will be communicated to Stakeholders / I&APs through newspaper advertisements, via email/telephonically.

Thank you for your participation.

Regards

A handwritten signature in black ink, appearing to read 'M Botha', with a long horizontal stroke extending to the right.

Marissa Botha (*Pr.Sci.Nat*)  
*Environmental Scientist* for Naledzi Environmental Consultants (Pty) Ltd  
Unit 112, the Office Park, Schoeman Street, Polokwane, 0699  
Cell: 084 226 5584 (Marissa)  
Email: [botham@naledzi.co.za](mailto:botham@naledzi.co.za)

Alternatively, contact the project EAP:  
Prof. Desmond Musetsho at 083-410-1477 or email [dmusetsho@naledzi.co.za](mailto:dmusetsho@naledzi.co.za)

November 2022

## BACKGROUND INFORMATION DOCUMENT (BID)

### Purpose of the BID

- Provides you as interested and/or affected party (I&AP) with an overview of the project and EIA process
- Invites you, as I&AP to participate in the required Public Participation Process
- Provides you the opportunity to contribute and participate in the formulation of the Scoping and EIA reports
- Gives you, as an I&AP the opportunity to provide the EIA team with your comments, concerns and objections to the proposed project.

### You can achieve this by:

- Reviewing the BID and registering as an I&AP by completing the attached registration form (page 10)
- Writing a letter, contacting us/ by sending an email/ chatting to us telephonically
- Giving comments, raising issues/concerns about the project **on or before 5 DECEMBER 2022.**
- Attending the schedule **public meetings** on 16 and 17 November 2022 (refer to page 8)

**Registrations and comments must be submitted on or before 5 DECEMBER 2022.**

### CONTACT DETAILS OF THE EAP:

Naledzi Environmental Consultants  
**Contact:** Marissa Botha  
Unit 112, the Office Park, Erf 352,  
Schoeman Street, Polokwane, 0699  
**Tel:** 084 226 5584/ 083 410 1477  
**Email:** [botham@naledzi.co.za](mailto:botham@naledzi.co.za)  
[www.naledzi.co.za](http://www.naledzi.co.za)

### NABAS DIAMONDS (PTY) LTD 'Proposed Grasdrift Mine'

#### NOTICE OF AN ENVIRONMENTAL IMPACT ASSESSMENT

#### (EIA) PROCESS FOR:

**Application for Environmental Authorisation and Waste Management License for a Mining Right Application and associated Water Use License Application for 'Grasdrift Mine' located on the left bank of the Orange River on the Remainder of the Farm Richtersveld No. 11 (Grasdrift), Richtersveld, Namakwa District, Northern Cape Province (South Africa)**

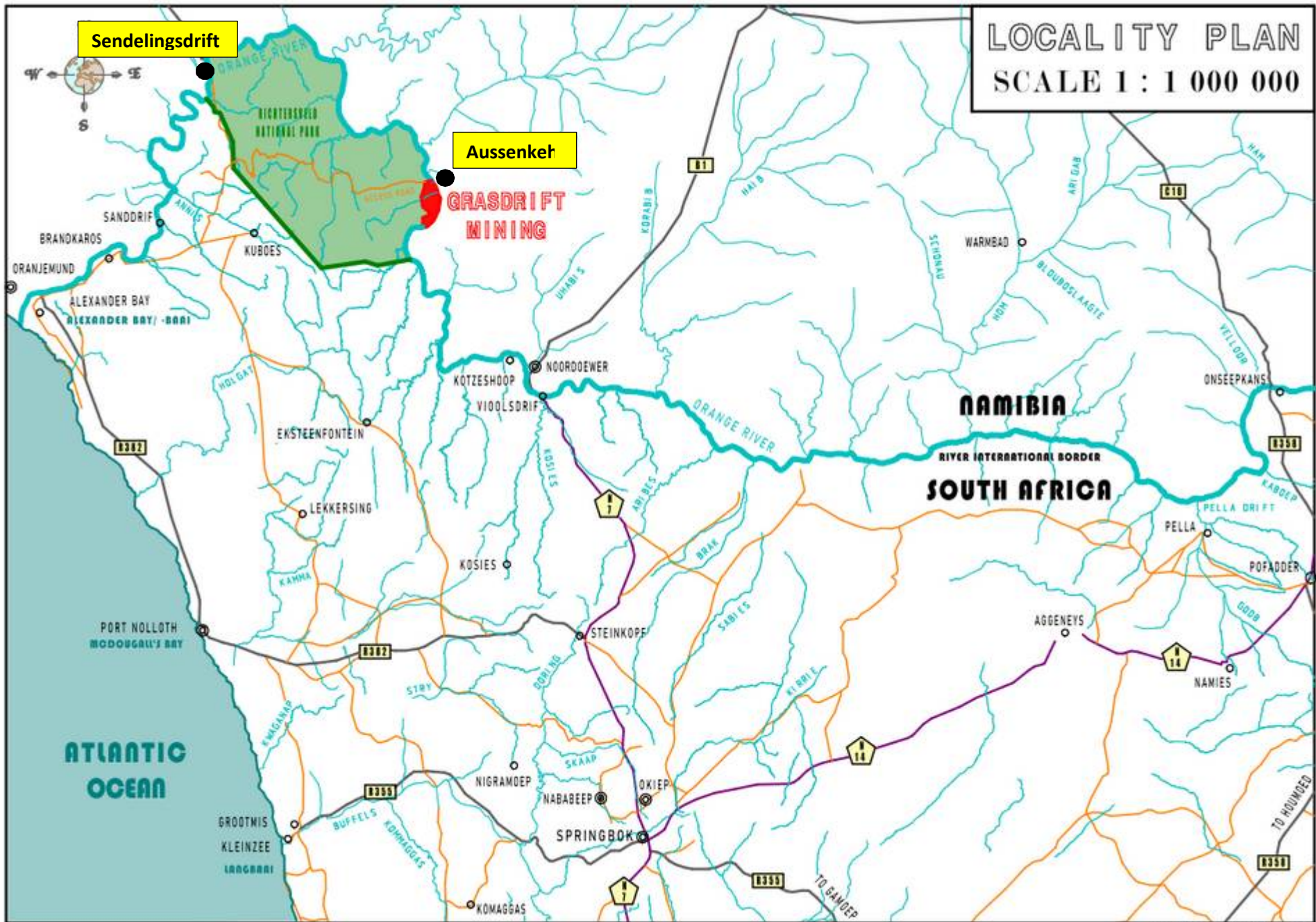
### 1. Project Background and Locality

Nabas Diamonds (Pty) Ltd (applicant) currently holds a registered prospecting right (NC 30/5/1/1/2/501 PR) for **alluvial diamonds** on the Remainder of the Farm Richtersveld No. 11 (Grasdrift) located on the left bank of the Orange River within the Ai Ais Richtersveld National Park and has now applied to the Department of Mineral Resources and Energy: Springbok (DMRE) for a mining right (**DMRE Ref. NCS 30/5/1/2/2/10211 MR**) over the same area. The Richtersveld Nama community is a direct shareholder in Nabas Diamonds, through the Nabas Trust established in 2006.

The proposed mining right area (MRA) is approximately 2692 ha in extent and located 140km east of Alexander Bay and 250km north of Springbok in the Richtersveld Local Municipality within the Namakwa District Municipality in the Northern Cape Province of South Africa. Access to the proposed mine right area is via an 80km secondary gravel road through the Richtersveld National Park and site across from Namibian town Aussenkehr. (Refer to **Figures 1 on page 2**).

Drilling and bulk sampling conducted in 2019 under the prospecting right at Grasdrift indicates there is more than 250, 000 carats of high-value diamonds present which can be mined over a 30 year period using conventional open cast mining methods i.e. loading, hauling and mineral processing by means of Standard Rotary Pan Plants. The mining operation will be known as 'Grasdrift Mine'.

Part of the process of obtaining mineral rights for 'Grasdrift Mine', the applicant is required to obtain numerous environmental permits and licenses under the provision of several sets of legislation detailed further in the sections below.



LOCALITY PLAN  
SCALE 1 : 1 000 000

Figure 1: Locality Plan showing the location of 'Grasdrift Mining' site on the left bank of the Orange River in Richtersveld National Park (Courtesy of 'To the T Drafts' produced for NDI Geological Consulting Services)



### 3. Project Description

The Grasdrift Mine will use open cast mining methods to extract the diamonds i.e. loading, hauling and mineral processing by means of Standard Rotary Pan Plants including final extraction through a Final Recovery Plant. The mining process will involve mechanised removal of overburden i.e. removal of vegetation (>20ha), excavation of sand and boulders to expose the diamond-bearing gravel along the Orange River. The mined-out material will be loaded into excavators and Front End Loaders will load the minerals onto a dump truck and ADT's. The RoM will be hauled to the processing plants for the diamond recovery and waste to overburden and waste stockpiles for later use in the rehabilitation of all disturbed areas.

The estimated processing capacity of the mine (Run of Mine) will be 300 000 tons/month. The mine property will be divided into 3 sections with a single mineral processing plant established in each of the 3 sections (Refer to **Figure 2, page 4** and **Annexure A for a Key Mine Site Plan**). Some of the infrastructure required for the mine operation has already been established during the prospecting period and an additional 9.4 ha of mine infrastructure will be established in the mine site

The infrastructure and services required for the mine either existing or to be constructed include:

- Existing access and haul roads will be used (established during prospecting operations).
- Existing brick buildings and steel structures owned by the mine (from prospecting operations) will be refurbished and reused as an office.
- < 1ha Parking areas will be required.
- **A Mineral Processing Plant** established in each of the 3 sections on the mine property comprising each:
  - A Rotary Pan covering > 0.5ha (i.e. 3 plants @ 0.5ha = 1.5ha)
  - A Final Recovery Plant covering 0.5ha (i.e. 3 plants @ 0.5ha = 1.5ha)
  - A **Slimes / Tailings Dam** ranging in size at each plant i.e. 1ha, 1ha and 2.97ha. The minimum holding capacity requirement of each slimes dam is 110 000m<sup>3</sup>/month.
  - Processing Plant processing capacity will be 71 000 tons/month;
  - Sand will be screened out before passing through the processing plant and a close circuit system will be used to decrease slime and water usage through the processing plant.
- **6 ha Pollution Control Dam**
- **3 Topsoil stockpile areas (each <0.5ha)** for the temporary storage of topsoil which will be used for rehabilitation of disturbed areas.
- **23.5 m<sup>3</sup> Diesel storage** (23m<sup>3</sup> storage tank and 0.5m<sup>3</sup> trailer)
- **< 0.5ha Contractor's laydown area**
- Dust suppression
- Stormwater management infrastructure

**Services required for the mine include:**

- **Water Requirements:**
  - 270 000m<sup>3</sup> of water will be abstracted from the Orange River for mine process and potable water;
    - Potable water will be stored in JoJo Tanks
    - Process water will be stored in three dams (3x 0.5 ha = 1.5ha)
  - A water transmission pipeline will be used to transfer water from the river to the processing plants;
  - An average of 80 000 - 100 000m<sup>3</sup>/month of water will be required per month
- **Electricity Supply** - Power generators will be used to supply electricity to the plants, accommodation areas and the water pump.
- **Sewage** - Ablution facilities and a Sewage Treatment Package Plant will be constructed.



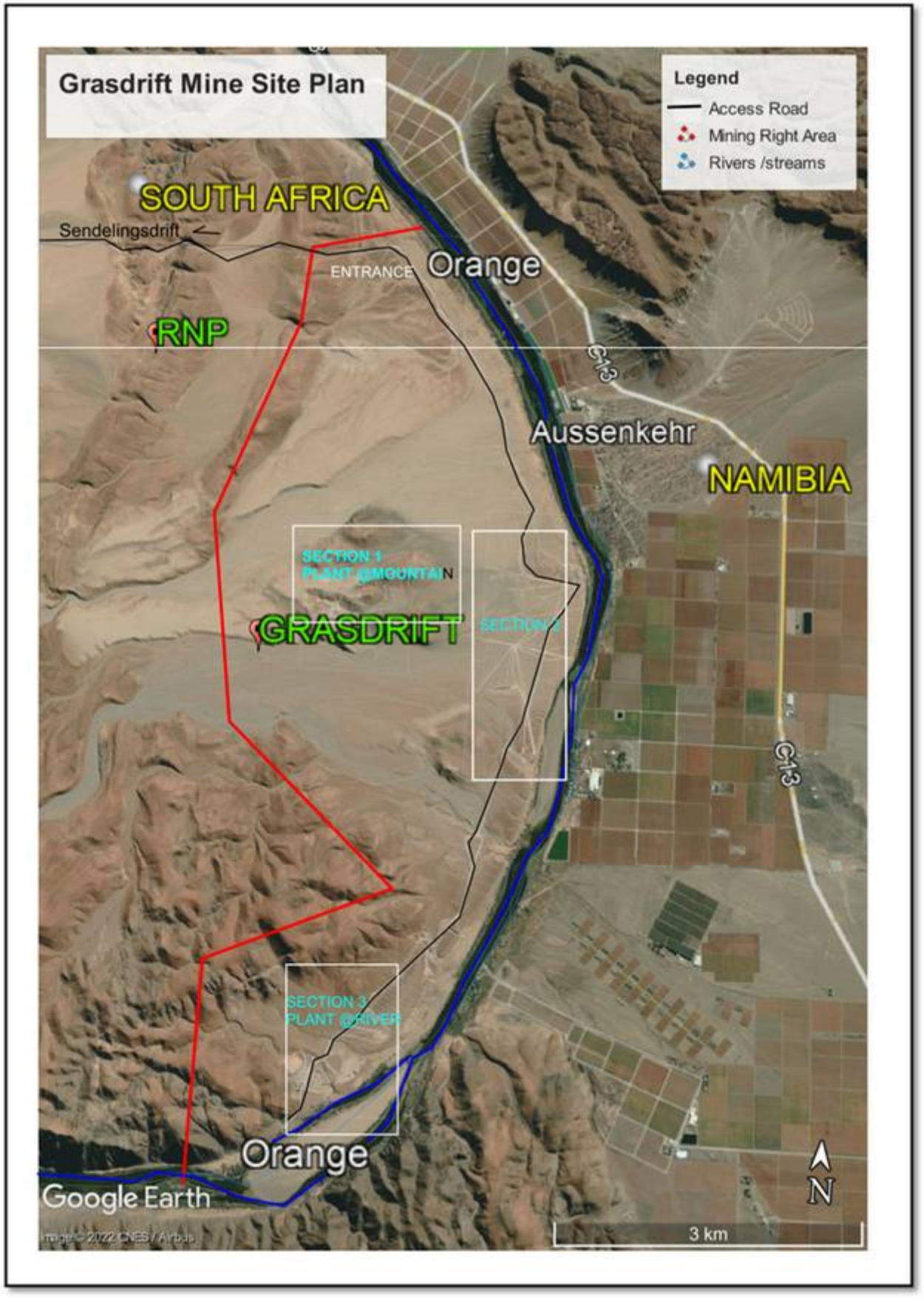


Figure 2: Mining Right Area (red polygon) and mining sections located on the left bank of the Orange River, superimposed on Google Earth Satellite imagery (See Annexure A for more detailed Key Site Plan)

## 5. Relevant Legislation

The proposed project triggers a number of listed activities in Government Notice (GN) No. R. 324, R. 325 and R. 327 of 7 April 2017 (as amended), which require environmental authorisation in terms of the 2014 EIA Regulations (GNR 326) published under the National Environmental Management Act, 1998 (Act 107 of 1998) (NEMA). A number of waste management activities listed under GN R. 633 and R. 921 published under the National Environmental Management: Waste Act (Act 28 of 2008) (NEM: WA) are also triggered which require a waste management license. Both applications are subject to a full Scoping and EIA Process.

The following listed activities require approval:

**Table 1: Possible List of Triggered Activities (These activities will be confirmed/refined during the EIA process)**

<b>NEMA Listing Notice</b>	<b>Possible Activities Triggered</b>
<b>▪ Environmental Authorisation</b>	
<b>1 (GN R. 327)</b>	Activity 12, 19, 25 (potentially), 27
<b>2 (GN R. 325)</b>	Activity 17
<b>3 (GN R. 324)</b>	Activity 10 (potentially), 12, 14
<b>NEM: WA List of Activities</b>	
<b>▪ Waste Management License</b>	
<b>GN R. 633</b>	Activity 11
<b>GN R. 921 (Category A)</b>	Activity 10, 12
<b>GN R. 921 (Category B)</b>	Activity 1 and 10

Nabas will also submit a Water Use License Application (WULA) in terms of section 40 of the National Water Act (Act 36 of 1998) (NWA) to the Department and Sanitation (DWS): Orange Proto in Upington for water uses specified under Section 21 (a), (b) (c), (g), (i) and possibly 21 (j). The applicable water uses include:

- S 21a - Abstracting water from the Orange River (270 000m<sup>3</sup>/annum)
- S 21b – Storing of process water in three (3) dams
- S21c and i – Mining activities within the regulated area of the Orange River / streams
- S21g – Construction and operation of onsite waste disposal facilities (i.e. Sewage Package Plant, x3 Tailings Dams, Pollution Control Dam) and dust suppression.

## 6. Environmental Assessment Practitioner

Naledzi Environmental Consultants (Pty) Ltd has been appointed as the independent environmental assessment practitioner (EAP) to undertake the EIA process and WULA and will conduct the integrated public participation process which fulfils both the requirements of NEMA and the NWA.

Our BID notice provides members of the public with information regarding the project and will allow the reader to:

- Determine whether they are an I&AP;
- Understand the project in order to provide informed comments;
- Understand the EIA process in order to participate meaningfully;

## 7. Scoping and EIA Process

The EIA process identifies the potential environmental impacts of a proposed activity and recommends mitigation measures to minimise/avoid such impacts. The main purpose of the EIA process is to inform the DMRE and the public of the environmental consequences of the project, should it be authorised. The EIA process is conducted in line with regulation 21 – 24 of the 2014 EIA Regulations (GN R. 326) and comprises three phases and generates four sets of information i.e.

- **Scoping Phase**
  - Background Information Document (BID – this document) to announce the project
  - Draft Scoping Report (DSR)
- **Impact Phase**
  - Draft Environmental Impact Report (EIR) and Environmental Management Programme (EMPr) inclusive of Specialist Studies
  - Mine Closure and Rehabilitation Plan
- **Decision-Making Phase** - DMRE decision is issued.

As part of the Scoping Phase, a BID document will be distributed to serve as notification of the commencement of the EIA process and call for registration and initial public comments. During this phase, the potential negative and positive impacts relevant to the proposed mining operation will be identified to determine the aspects to be focused on during the Impact Phase. The potential impacts will be identified through initial desktop analysis, environmental screening and site verification, initial specialist inputs including comments received from the public and key commenting authorities and past experience from similar projects. The information will be consolidated and presented in a Scoping Report and will be subject to 30 days of public review and comment before being submitted to the DMRE for approval.

Once the DMRE accepts the Scoping Report the impact phase will commence by conducting specialist studies and preparing the draft Environmental Impact Report (EIR) which evaluates all impacts and issues identified during the Scoping Phase. The EIR will provide an overview of the potential impacts, rank and quantify the impacts and prescribe mitigation measures to minimise negative impacts to acceptable levels.

An auditable Environmental Management Programme (EMPR) will also be prepared that recommends environmental management specifications for the construction, operation, closure and rehabilitation of the mine that need to be observed by Nabas Diamonds. The reports will be released for 30-days public review, followed by the second round of public engagement. The reports will be updated with public inputs and submitted to DMRE for decision-making. DMRE will reach a decision on the application within 107 days. I&APs will be notified of the outcome and afforded a 20-day appeal period on the decision.

The EIA process comprises the following basic steps:

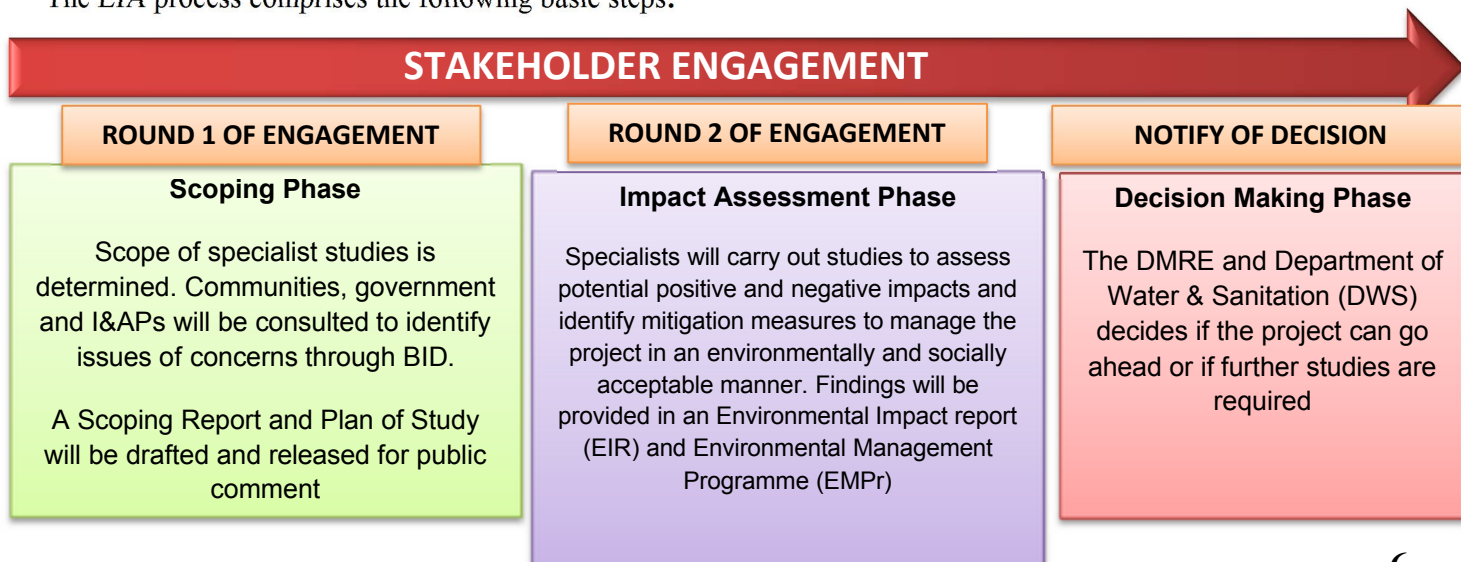


Figure 3: Basic Illustration of the EIA process phases

## 8. Potential Impacts and Specialist Inputs Required

Specialist Studies are a crucial component of the EIA process and form the basis of the integrated EIR and EMPr for the proposed project. Based on the nature of the project and the DFFE GIS-based National web-based Environmental Screening Tool several specialist studies are required and will be commissioned as part of the EIA process to evaluate the site aspects and potential environmental and social impacts relevant to the project:

- Heritage Impact Assessment and desktop Palaeontological Assessment
- Surface Water Impact Assessment incl.
  - Mine Water Balance
  - Flood Line Assessment
  - Conceptual Stormwater Management Plan
- Groundwater Impact Assessment
- Aquatic Biodiversity and Wetland Impact Assessment (incl. Fish assessment)
- Terrestrial Biodiversity Assessment (Fauna, Flora, Avifauna)
- Soil, Agricultural Potential, Land Use Capability;
- Hydrogeology Assessment
- Noise, Air Quality, Visual Impact Assessments / Statements
- Socio-Economic Impact Assessment
- Community Health Study

## 9. Public Participation Plan

Public participation is a key requirement of the EIA process and needs to be conducted in line with the NEMA EIA Regulations (Regulation 39-44). The PPP aims to engage I&APs and provide an opportunity for the expression of public views on the environmental impacts of the application. All public issues and views on impacts are documented, addressed and responded to in the EIA process and incorporated into environmental reports for consideration by the DMRE. It is therefore important that relevant I&APs are identified and involved in the PPP from the beginning of the process to help focus the EIA process plan.

Naledzi's public participation plan for the project includes three rounds of consultation to satisfy both the NEMA and NWA requirements.

Three rounds of public consultation are planned as part of the EIA process to satisfy both the NEMA and NWA requirements. (See EIA process Schedule provided under Section 7)

### Plan

#### 1st Round - I&AP Registration, Circulation of BID for 30-days review and comment

**November 2022** - The project will be announced to the public through the following means:

- 4 – 11 November 2022:
  - A newspaper advertisement in the Plattelander and Gemsbok newspaper
  - Placement of onsite notices in the project area;
- 4 November to 5 December 2022:
  - Availability of a BID (this document) at public venues in the project area and on the Naledzi website ([www.naledzi.co.za/publicdocuments](http://www.naledzi.co.za/publicdocuments)) under the heading 'Proposed Grasdrift Mine'.
  - Distribution of the BID and Notification Letter to I&APs for comment and review (30 days)



- 16 – 17 November 2022:
  - Conduct public meetings in the project area from 16 – 17 November 2022 (See below details)

## **2nd Round – Released of Draft Scoping Report for 30-day review and comment**

### **January to February 2023**

The second round of consultation will be conducted and entail the following:

- A newspaper advertisement in the same local and regional newspaper (issued on Friday and Wednesday)
- Emailing of notification letters to registered I&APs of the availability of the draft SR
- Availability of Draft Scoping Report for public review and comment during January 2023 at the same public venues as the BID and Naledzi website;
- Once the public review period lapses, the report will be updated to incorporate public inputs and submitted to the DMRE at the beginning of February 2023 for approval.
- I&APs will be notified once the SR is approved and the Impact Phase may commence which is expected in April 2023.

## **3rd Round - Released of Draft EIR & EMPR for 30-days review and comment**

### **June – July 2023**

The third round of consultation will entail the following:

- Another round of newspaper advertisements
- Emailing of notification letters to registered I&APs of the availability of the draft EIR & EMPR
- Availability of Draft EIR & EMPR for public review and comment at the same public venues as the BID and Scoping Report and on the Naledzi website.
- The second round of public meetings will be held, wherein the findings of the EIR & EMPR will be presented.

## **9.1 Scheduled Public Meetings**

---

I&APs are invited to attend the below scheduled public meetings for the project where the EAP will give an overview of the project and EIA process being followed. Registration and Comment Sheets will also be available and can be completed at the meeting venues.

**Table 2: Scheduled Public Meetings**

<b>Date</b>	<b>Venue</b>	<b>Time</b>
16 November 2022	LEKKERSING HALL	10H00
16 November 2022	EKSTEENFONTEIN HALL	14H00
17 November 2022	KUBOES V GK CHURCH HALL	10H00
17 November 2022	SANDDRIFT HALL	14H00

Registration and Comments forms will also be available at the meeting venue and can be completed and submitted to Naledzi after the meeting. Targeted meetings will also be held with key commenting authorities and stakeholders as required during the course of the EIA process.

## 10. How can you become involved?

You are invited to register as an Interested and Affected Party (I&AP) for **30 days, from 4 November to 5 December 2022**. The BID is presently available for review and submission of comments regarding the proposed application.

You can attend the scheduled public meetings on 16 and 17 November 2022 to ask questions of clarity and to obtain more project information.

I&APs are requested to please provide their comments together with their name, contact details and an indication of any direct business, financial, personal or other interest that they have in the application, to the **contact person provided below**, within the specified period.



Naledzi Environmental Consultants (Pty) Ltd

Unit 112, the Office Park, Erf 352, Schoeman Street, Polokwane, 0699

Contact Person: Marissa Botha / Desmond Musetsho

Email: [botham@naledzi.co.za](mailto:botham@naledzi.co.za) / [dmusetsho@naledzi.co.za](mailto:dmusetsho@naledzi.co.za)

Tel: +27 84-226-5584 / +27 83-410-1477

**REGISTRATION AND COMMENT SHEET**

**NOTICE OF AN EIA PROCESS FOR AN APPLICATION FOR ENVIRONMENTAL AUTHORISATION, WASTE MANAGEMENT LICENSE AND WATER USE LICENSE FOR THE PROPOSED GRASDRIFT DIAMOND MINE ON THE LEFT BANK OF THE ORANGE RIVER ON THE REMAINDER OF FARM NO. 11 (GRASDRIFT), RICHTERSVELD, NAMAKWA DISTRICT NORTHERN CAPE PROVINCE  
DMRE Ref. NCS 30/5/1/2/2/10211 MR**

**Naledzi Environmental Consultants (Pty) Ltd**  
Contact: Marissa Botha  
Unit 112, the Office Park, Erf 352  
Schoeman Street, Polokwane, 0699, South Africa  
Tel: 084 226 5584  
Email: [botham@naledzi.co.za](mailto:botham@naledzi.co.za)  
[www.naledzi.co.za](http://www.naledzi.co.za)

<b>TITLE</b> (Prof/Mr/Mrs)		<b>FIRST</b> <b>NAME</b>	
<b>SURNAME</b>			
<b>CAPACITY</b> (eg. Director/Secretary)			
<b>ORGANISATION</b>			
<b>POSTAL ADDRESS</b>		<b>POSTAL CODE</b>	
<b>TEL NO:</b>		<b>CELL NO:</b>	
<b>FAX NO:</b>		<b>EMAIL ADDRESS:</b>	
<b>INTEREST IN THE MATTER:</b>			
<b>COMMENTS/ISSUES / CONCERNS (Please use a separate sheet, if required)</b>			

Please add the following of my colleagues/friends/neighbours to your mailing list:

<b>Name:</b>	<b>Organisation:</b>		
<b>Contact details</b>			
<b>Address:</b>			
<b>Tel:</b>	<b>Fax:</b>	<b>Cell:</b>	
<b>Email:</b>			

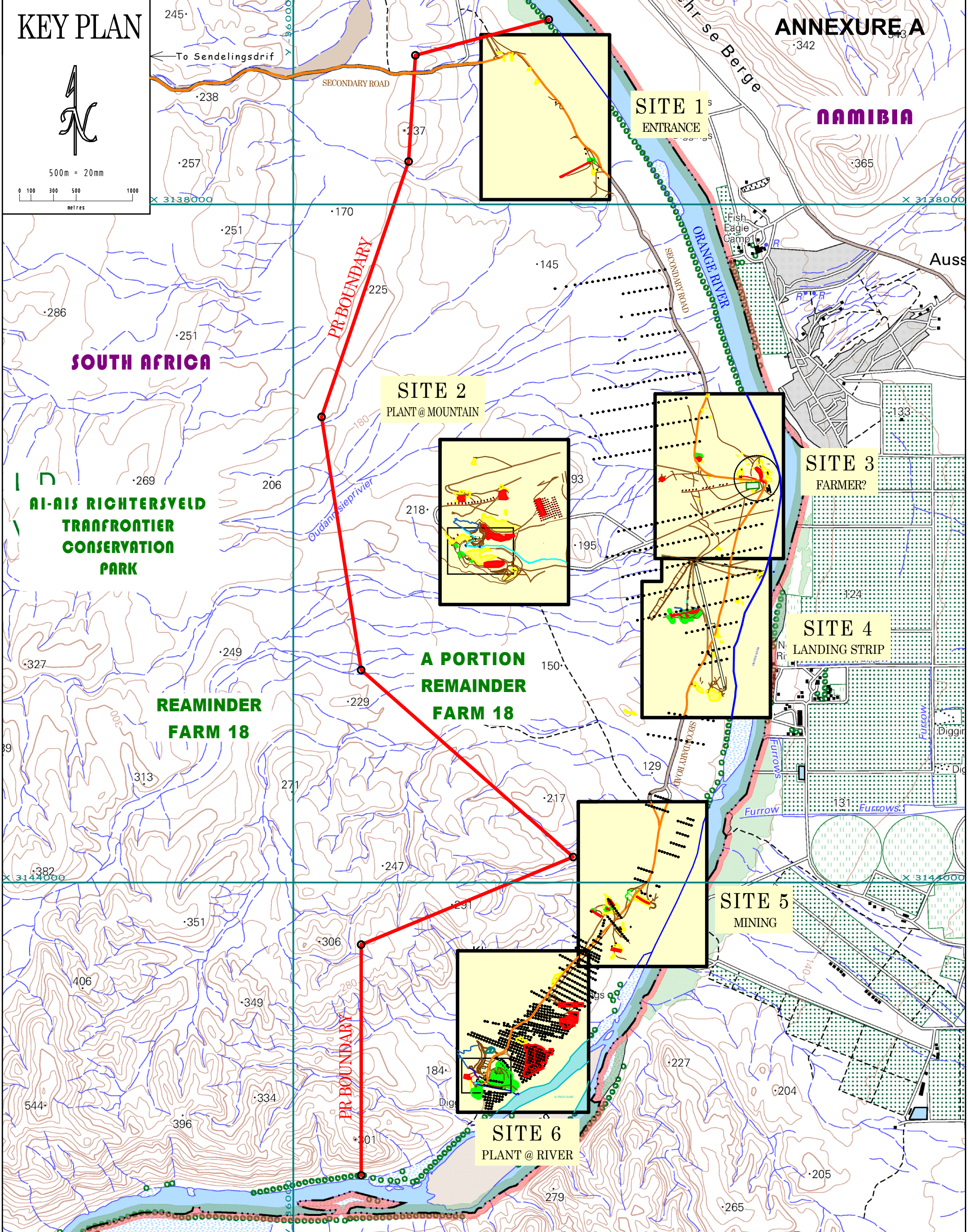
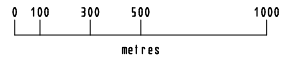


# KEY PLAN

# ANNEXURE A



500m = 20mm



**SOUTH AFRICA**

**NAMIBIA**

**AI-AIS RICHTERSVELD  
TRANSFRONTIER  
CONSERVATION  
PARK**

**REAMINDER  
FARM 18**

**A PORTION  
REMAINDER  
FARM 18**

## GRASDRIFT MINING

### KEY PLAN

**WGS84 DATUM SURVEY SYSTEM LO17**

SCALE 1 : 30 000

### LEGEND:

PROSPECTING BORE HOLES	• • •	MINE ROAD	=====
PROSPECTING PIT & DUMP	● ● ●	SECONDARY ROAD	=====
MINED	■ ■ ■	WATER	=====
DISTURBED	■ ■ ■		
RAMP			
DUMPS	■ ■ ■		