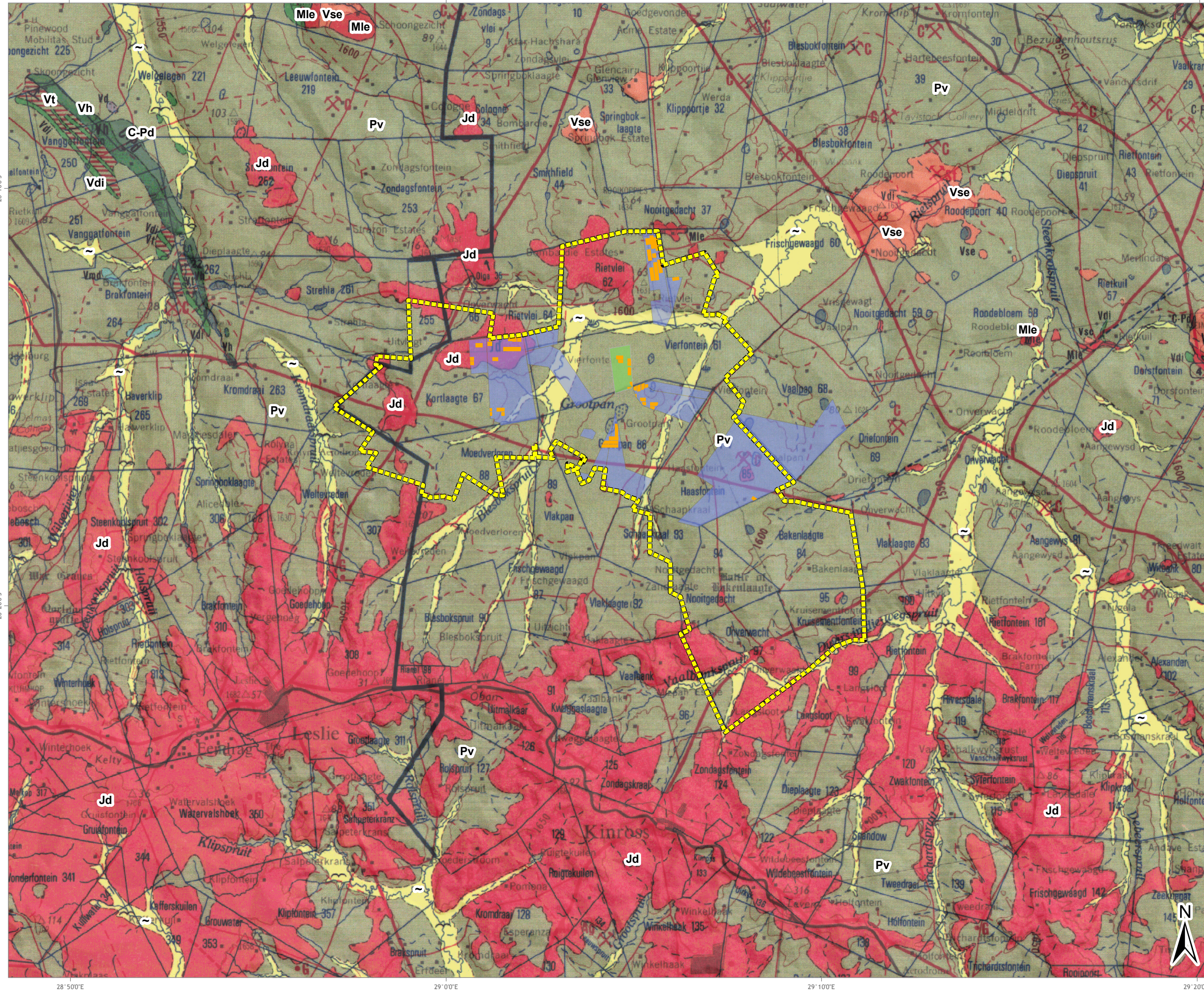



MATLA: GEOLOGY

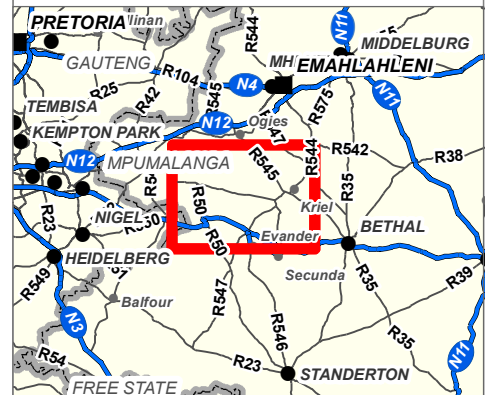


LEGEND

-  Mine Boundary
-  Stooing Areas
-  Eskom Holdings
-  Exxaro Holdings

LITHOLOGY:

- C-Pd = Diamictite, Shale.
- di = Diabase.
- Jd = Dolerite.
- Mle = Medium-grained porphyritic granite, red, coarse-grained biotite granite.
- Pv = Sandstone, shale, coal beds.
- Vlo = Agglomerate, lava.
- Vse = Porphyritic rhyolite with embedded mudstone and sandstone.



Data Sources:
Council for Geoscience
1:250 000 Geological Series: 2628

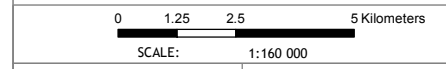


FIGURE NO.:	MAP NUMBER: 13-400-25
DRAWN BY: JF VERMEULEN GIS TECHNICIAN	REVIEWED BY: P CHETTY GIS SPECIALIST
DATUM: WGS84	DATE: 07 OCTOBER 2014
PROJECTION: GEOGRAPHIC	
PROJECT: STOOING (MATLA)	
CLIENT: MATLA	



63 Wessel Road Woodmead
PO Box 2597 Rivonia 2128
South Africa
Tel: +27 (0) 11 803 5726
Fax: +27 (0) 11 803 5745
E-mail: jhb@gcs-sa.biz
www.gcs-sa.biz