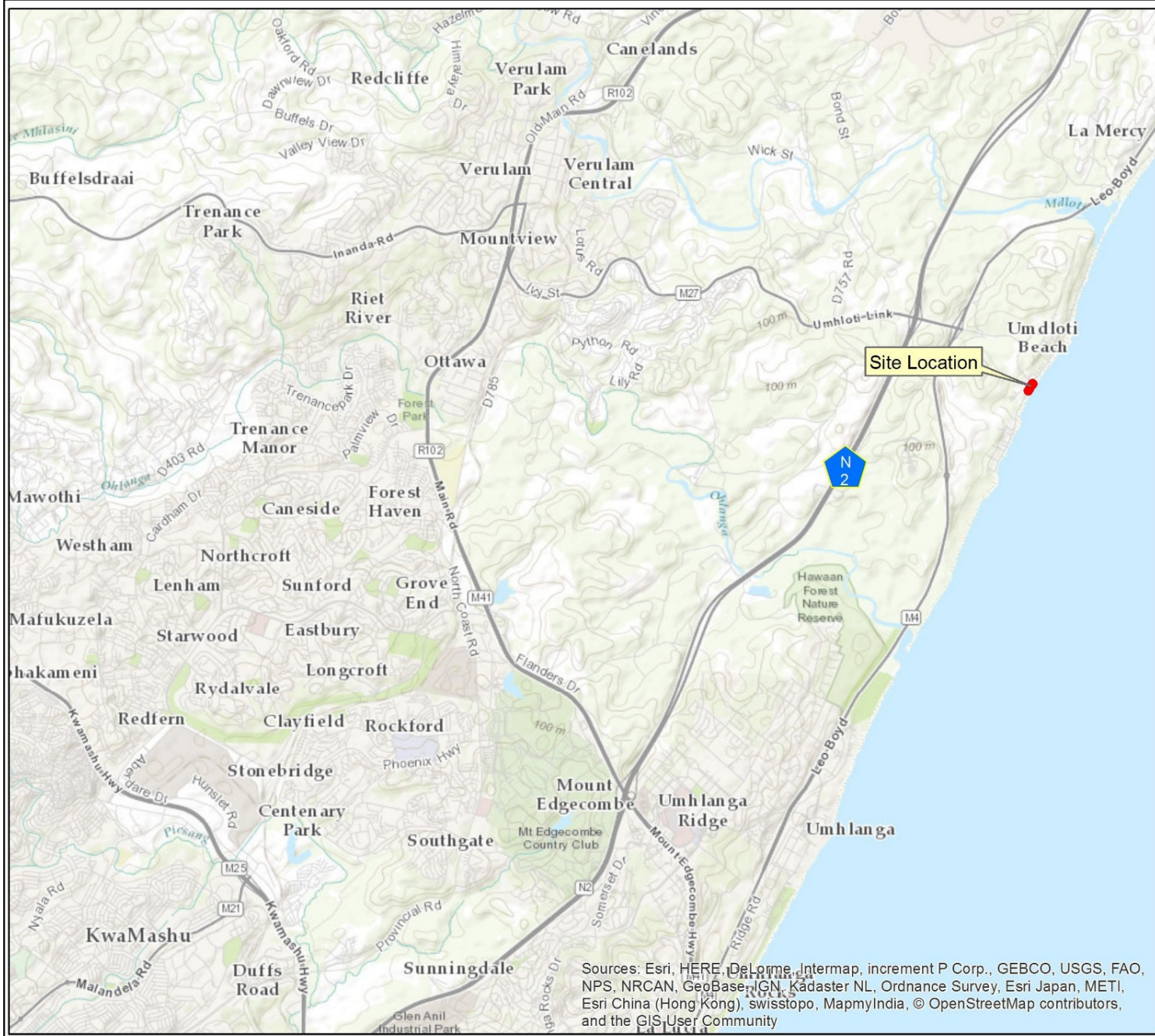


Appendix 7: MAPS

(i) Locality Map



Umdloti Stormwater Expansion

LOCALITY

Locality Map

LEGEND

— Proposed Site

Production Date: 28 July 2017
 Coordinate System: PCS (Transverse Mercator LO31; WGS84)

Kilometers

SCALE (A4)
1:75 000

Compiled By:

JG AFRIKA
EXPERIENCE · QUALITY · INTEGRITY

John Jeffares House,
6 Pin Oak Ave, Hilton
PO Box 794, Hilton
Pietermaritzburg, 3245
Tel: +27(0)33 343 6700
Fax: +27 (0)33 343 6701

Sources: Esri, HERE, DeLorme, Intermap, increment P Corp., GEBCO, USGS, FAO, NPS, NRCAN, GeoBase, IGN, Kadaster NL, Ordnance Survey, Esri Japan, METI, Esri China (Hong Kong), swisstopo, MapmyIndia, © OpenStreetMap contributors, and the GIS User Community

Designed and detailed under the controls established by our quality management system that meet the requirements of ISO 9001:2000 which has been independently certified by DEKRA Certification under certificate number 90906882.

(ii) Site Map



© 2017 DigitalGlobe © 2017 GeoEye Earthstar Geographics SIO © 2017 Microsoft Corporation

Umdloti Stormwater Expansion

SITE PLAN

Locality Map

Project Area

67 m

Pietermaritzburg

71 m

Durban

Sources: Esri, HERE, DeLorme, Intermap, increment.P, Corp., GEBCO,

LEGEND

Proposed Stormwater Culvert Layout

Production Date: 28 July 2017

Coordinate System: PCS (Transverse Mercator LO31; WGS84)

Meters

0 30 60 90 120

N

SCALE (A4)

1:2 500

Compiled By:

JG AFRIKA
EXPERIENCE QUALITY INTEGRITY

John Jeffares House,
6 Pin Oak Ave, Hilton
PO Box 794, Hilton
Pietermaritzburg, 3245
Tel: +27(0)33 343 6700
Fax: +27 (0)33 343 6701

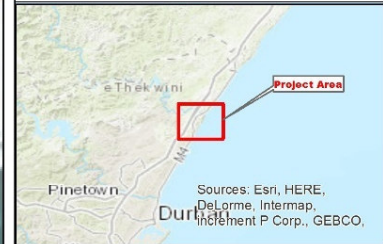
Designed and detailed under the controls established by our quality management system that meet the requirements of ISO 9001:2000 which has been independently certified by DEKRA Certification under certificate number 90906882.

(iii) Proposed Site Camp Locality and Extent



Proposed Expansion of the Stormwater System at 1 South Beach Road, Umdloti

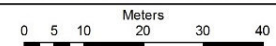
Location of Existing and Proposed Infrastructure



Legend

-  Proposed Underground Stormwater Culvert
-  eThekweni Metro Wastewater Infrastructure
-  Proposed Site Camp

Production Date: 01 August 2017
 Coordinate System: PCS (Transverse Mercator L031; WGS84)



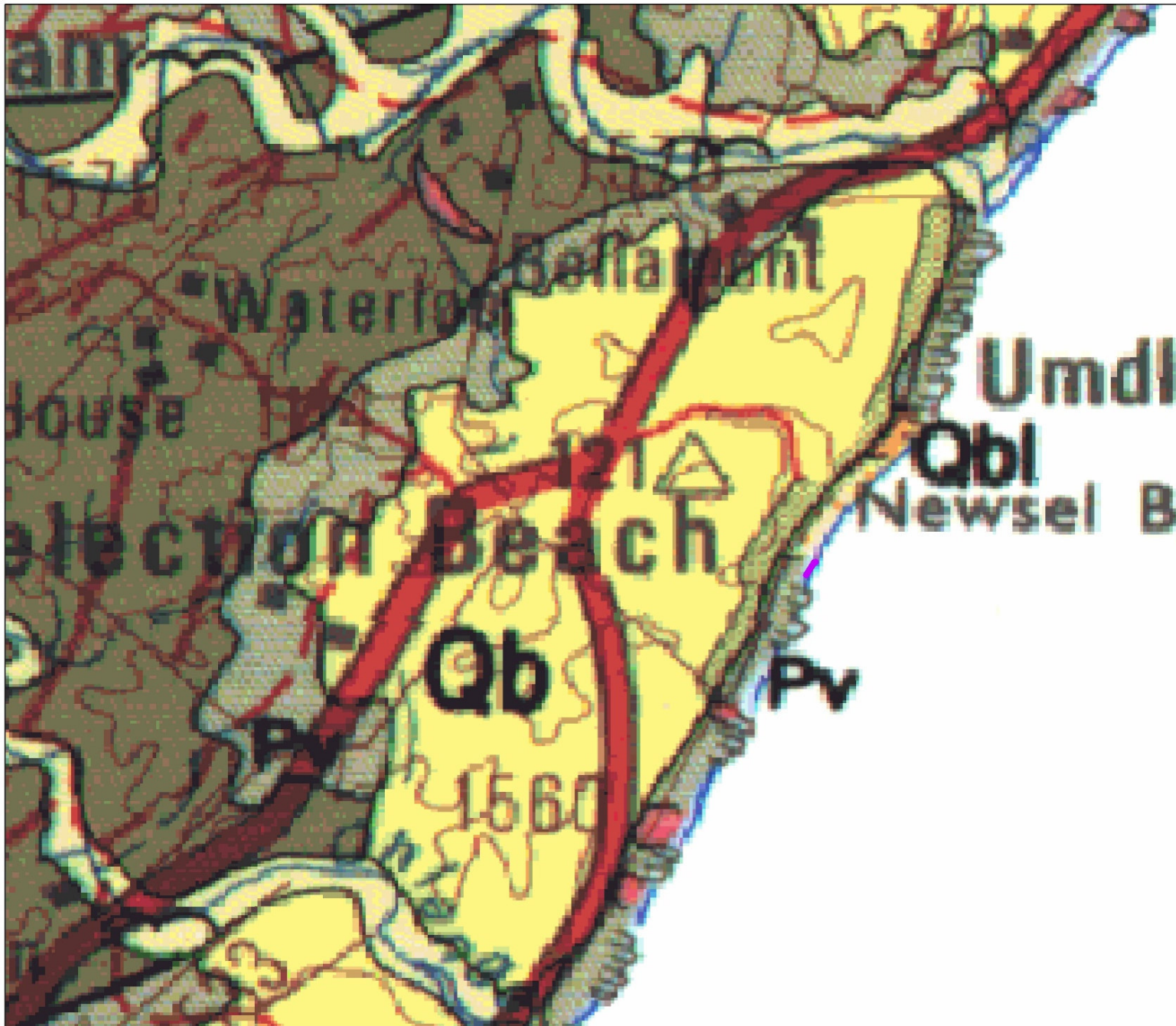
Compiled By:



Designed and detailed under the controls established by our quality management system that meet the requirements of ISO 9001:2000 which has been independently certified by DEKRA Certification under certificate number 90906882.



(iv) Geological Map



UMDLOTI STORMWATER EXPANSION AND UPGRADE

Geology Map

Sources: Esri, HERE, DeLorme, Intermap, increment P Corp., GEBCO.

Legend

- Proposed Umdloti Stormwater Pipeline
- Medium to coarse-grained sandstone with thin grit beds; subordinate grey shale and siltstone; sporadic coal - (Karoo Super Group - ECCA Group - Vryheid Formation)
- Red sand, subordinate white, yellow brown and purple sand; basal conglomerate - (Berea Formation)

Production Date: 31 January 2017
Coordinate System: PCS (Transverse Mercator LO31; WGS84)

Kilometers

SCALE
1:24 300

Completed By:

JG AFRIKA
EXPERIENCE QUALITY INTEGRITY

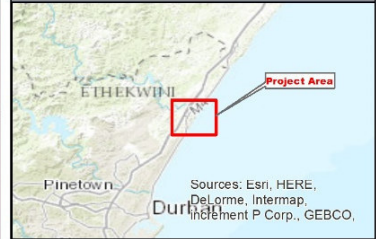
Designed and detailed under the controls established by our quality management system that meets the requirements of ISO 9001:2000 which has been independently certified by DEKRA Certification under certificate number 9000682.

(v) Vegetation Designation



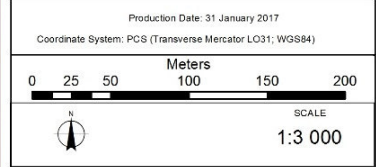
UMDLOTI STORMWATER EXPANSION AND UPGRADE

Vegetation Map



Legend

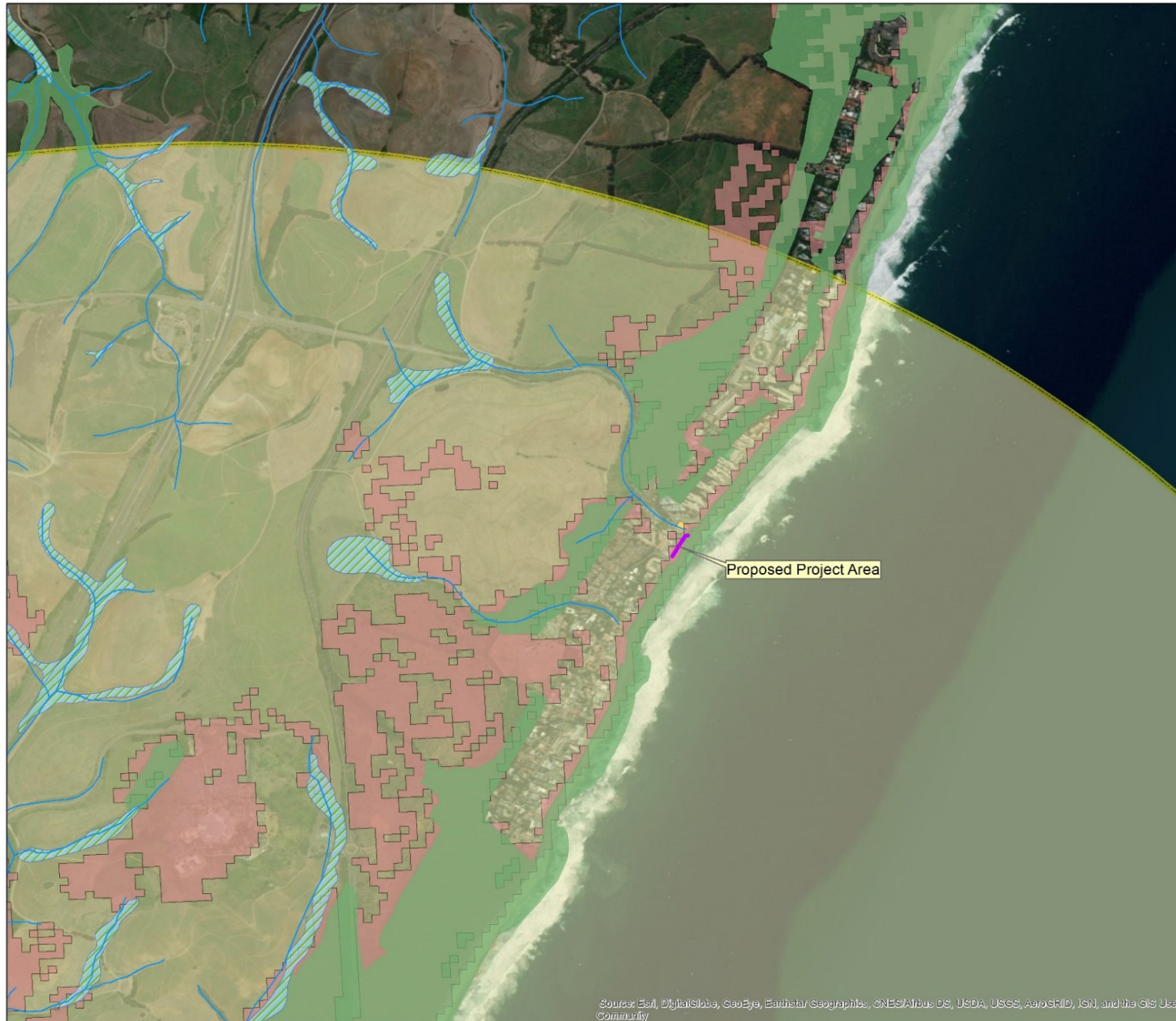
 Proposed Umdloti Stormwater Pipeline



Designed and detailed under the controls established by our quality management system that meet the requirements of ISO 9001:2000 which has been independently certified by SQAQA. Certificates under certificate number 0000982.



(vi) Protected Areas



Proposed Expansion of the Stormwater System at 1 South Beach Road, Umdloti

Sensitive Areas



Legend

- Proposed Umdloti Stormwater Pipeline
- Watercourses
- Site Camp
- eThekweni Wetlands
- DMOSS
- SANBI Critically Endangered Ecosystems
- 5km Protected Area Buffer

Production Date: 01 August 2017
 Coordinate System: PCS (Transverse Mercator LO31; WGS84)

Kilometers

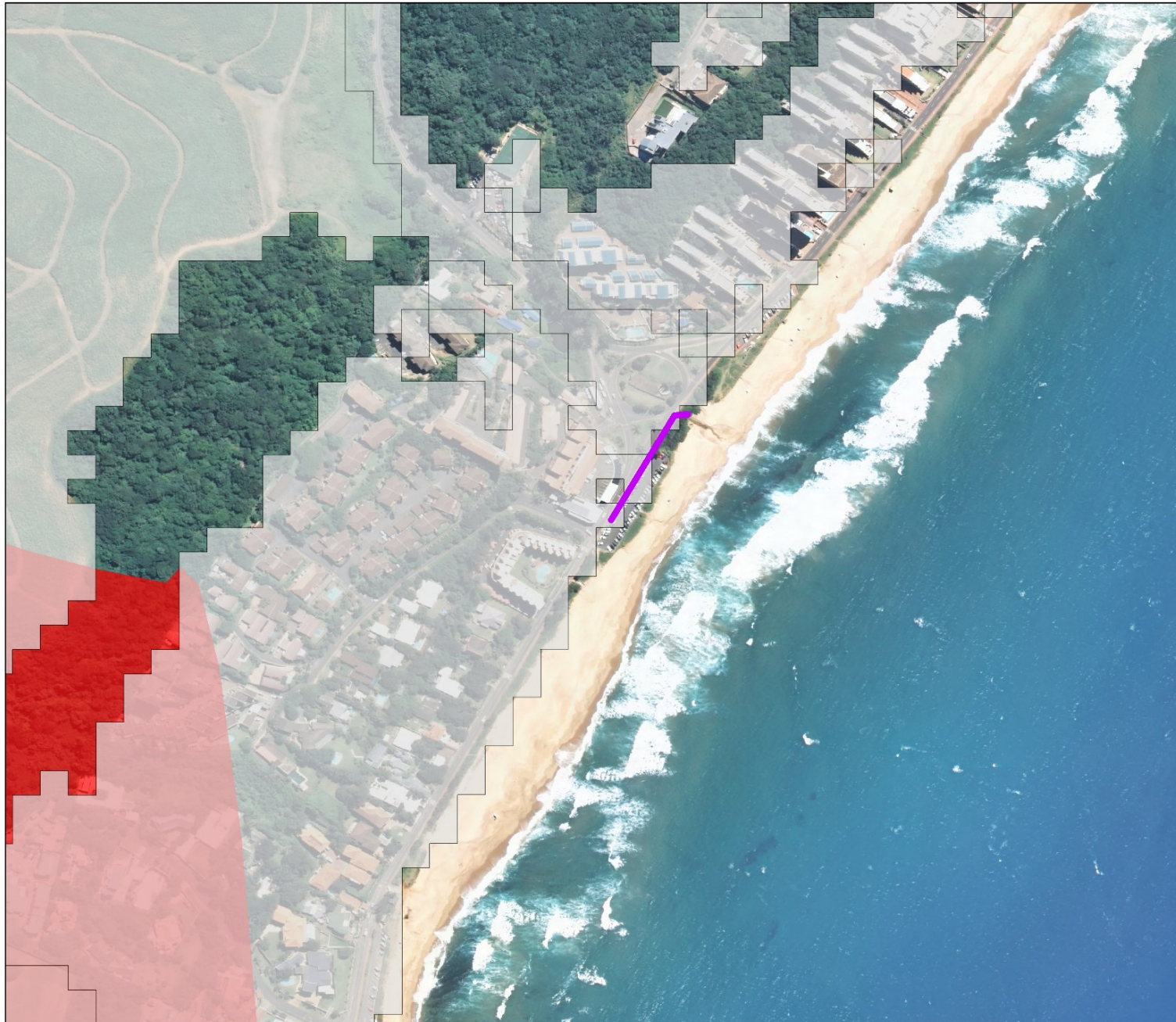
0 0.125 0.25 0.5 0.75 1

SCALE
1:15 000

Compiled By:

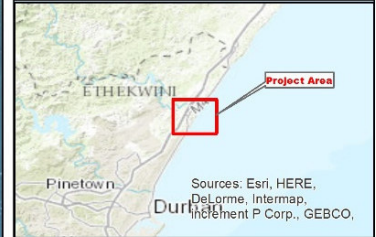
Designed and detailed under the controls established by our quality management system that meet the requirements of ISO 9001:2000 which has been independently certified by DSK/A Certification under certificate number 90909882.

Source: Esri, DigitalGlobe, GeoEye, Earthstar Geographics, CNES/Airbus DS, USDA, USGS, AeroGRID, IGN, and the GIS User Community










UMDLOTI STORMWATER EXPANSION AND UPGRADE

Transformed Areas



Legend

-  Proposed Umdloti Stormwater Pipeline
-  EKZNW Transformed Land Cover
-  Existing Protected Area Network
-  100% Transformed (2005 LC)
-  Outside Province
-  Critical Biodiversity Area: Irreplaceable
-  Critical Biodiversity Area: High Irreplaceable
-  Critical Biodiversity Area: Optimal Biodiversity Area

Production Date: 01 February 2017
 Coordinate System: PCS (Transverse Mercator L031; WGS84)



Completed By:



Designed and detailed under the controls established by our quality management system that meet the requirements of ISO 9001:2000 which has been independently certified by DEKRA Certification under certificate number 90906882.



(vii) Wetlands and Watercourses



UMDLOTTI STORMWATER EXPANSION AND UPGRADE

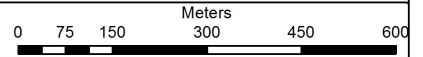
Wetlands and Watercourses Map



Legend

- Watercourses
- Proposed Umdlotti Stormwater Pipeline
- eThekweni Wetlands
- NFEPA wetlands

Production Date: 08 August 2017
 Coordinate System: PCS (Transverse Mercator LO31; WGS84)



Compiled By:

Designed and detailed under the controls established by our quality management system that meet the requirements of ISO 9001:2000 which has been independently certified by DEKRA Certification under certificate number 90908882.