

APPENDIX 7: ADDITIONAL
INFORMATION

APPENDIX 7.1: SIP CONFIRMATION LETTER



PUBLIC WORKS AND INFRASTRUCTURE
INFRASTRUCTURE SOUTH AFRICA
REPUBLIC OF SOUTH AFRICA

Department of Public Works and Infrastructure | Central Government Offices | 256 Madiba Street | Pretoria | Contact: +27 (0)12 406 16271 +27 (0)12 323 7573
Private Bag X9155 | CAPE TOWN, 8001 | RSA 4th Floor Parliament Building | 120 Plain Street | CAPE TOWN | Tel: +27 21 402 2228 Fax: +27 21 462 4592
www.publicworks.gov.za

Dr Kgosientsho Ramokgopa
a/ Head: Infrastructure South Africa
Chairperson: SIP Steering Committee
Email: Boitumelom@presidency.gov.za
Kgosientsho@presidency.gov.za

To Whom It May Concern,

**STRATEGIC INTEGRATED PROJECT (SIP) 20a EMERGENCY / RISK MITIGATION
POWER PURCHASE PROCUREMENT PROGRAMME (2000 MW) –
ACKNOWLEDGEMENT OF PROJECT STATUS**

The Risk Mitigation (Independent) Power Purchase Procurement Programme (RMPPPP) forms part of the Energy Strategic Integrated Project No. 20, which was gazetted in Government Gazette 43547 on 24 July 2020. These projects are classified as Strategic Integrated Projects (SIP) and are to be managed within the requirements as set out in the Infrastructure Development Act (Act No. 23 of 2014).

As per the announcement of the Honourable Mr. Gwede Mantashe, Minister of the Department Mineral Resources and Energy (DMRE), on the 18th of March 2021, the following projects received Preferred Bidder status within the RMPPPP:

- i. **Karpowership SA Coega (Project No. RM-TA-0145-001)**
- ii. **Karpowership SA Richards Bay (Project No. RM-TA-0145-002)**
- iii. **Karpowership SA Saldanha (Project No. RM-TA-0145-003)**

The SIP Steering Committee of 6 November 2020 confirmed that all projects classified with Preferred Bidder status within the RMPPPP will be regarded as SIP projects to be expedited in terms of Schedule 2 (Section 17(2)) of the Infrastructure Development Act (Act No. 23 of 2014).

The following individuals from Infrastructure South Africa are responsible for the Energy Infrastructure Portfolio and SIP 20a, and may be contacted for further assistance:

STRATEGIC INTEGRATED PROJECT No. 20a: RMPPPP	
<i>Alvino Wildschutt-Prins</i>	<i>Gary King</i>
Overall Management and Lead SIP Programme Management Office	SIP 20 Lead
Alvino@presidency.gov.za	garyk@idc.co.za
Mobile: 072 650 2449	Mobile: 063 503 2662 / 082 885 0636

I hereby request that you please assist the Preferred Bidders with the necessary approvals, authorisations, licences, permissions and exemptions, as determined within the boundaries of the Infrastructure Development Act (Act No 23 of 2014). Your assistance will be much appreciated.

We wish the Preferred Bidders all the best in the development of this project.

Yours sincerely,



Dr Kgosientsho Ramokgopa

Chair: Strategic Integrated Project Steering Committee

Date: 29 March 2021

APPENDIX 7.2: RMIPPPP OVERVIEW



mineral resources & energy

Department:
Mineral Resources and Energy
REPUBLIC OF SOUTH AFRICA

RISK MITIGATION INDEPENDENT POWER PRODUCER PROCUREMENT PROGRAMME (RMIPPPP)

8 Successful Bidders - Project Overview



ACWA Power DAO
(150 MW)
Job Years to be created:
Construction – 470
Operations – 394

Mulilo Total Hydra Storage
(75 MW)
Job Years to be created:
Construction – 700
Operations – 1198

Umoyilanga Energy
(75 MW)
Job Years to be created:
Construction – 893
Operations – 1586

Karpowership SA R/ Bay
(450 MW)
Job Years to be created:
Construction – 87
Operations – 2407

Mulilo Total Coega
(320 MW)
Job Years to be created:
Construction – 770
Operations – 2567

Karpowership SA Coega
(450 MW)
Job Years to be created:
Construction – 80
Operations – 2407

Oya Energy Hybrid
(128 MW)
Job Years to be created:
Construction – 545
Operations – 943

Karpowership SA Saldanha
(320 MW)
Job Years to be created:
Construction – 284
Operations – 2047

1845 MW electricity capacity procured

R45 billion investment attracted

50% local content commitment of total project cost (minus excluded costs)

52.6% Shareholding by South African Entities

40.91% Shareholding by Black South Africans

17 376 Job Years Employment opportunities for South African citizens during construction and operations

R1.5 billion Socio-Economic, Enterprise and Skills Development commitments

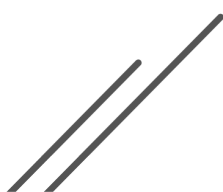


mineral resources & energy

Department:
Mineral Resources and Energy
REPUBLIC OF SOUTH AFRICA



The Risk Mitigation Independent Power Producer Procurement Programme (RMIPPPP) in Context





In response to recent articles in the media following the announcement of the Preferred Bidders under the RMIPPPP, there is a need to provide context around the objectives, design and the outcome of the RMIPPPP.

Objectives of the RMIPPPP

The 2 000 MW Ministerial Determination that was gazetted on 7 July 2020, following NERSA public consultation and concurrence, has two objectives, namely to **procure new generation capacity:**

- **from a range of source technologies** to address the electricity capacity supply gap as identified in the IRP2019; and
- to reduce the extensive utilisation of expensive diesel-based peaking open cycle gas turbine (OCGT) generators in the medium-to-long-term.

The RMIPPPP was designed with these two objectives in mind.

Unique design of the RMIPPPP

It is important to understand from the outset that this procurement cannot be compared with previous Bid Windows procured by the DMRE where specific technologies were targeted. The performance specifications of the RMIPPPP were stipulated by the Transmission System Operator (SO) which, among others, included the need for each Project to be dispatchable between 05:00 and 21:30 daily in response to the instruction from the SO. In addition, each project is required to provide Ancillary Services, which are necessary for grid stability. These design features, combined with the need to keep the tariff low, resulted in the unique RMIPPPP design that was to be implemented for the first time in South Africa.

“It is important to understand from the outset that this procurement cannot be compared with previous Bid Windows procured by the DMRE where specific technologies were targeted”

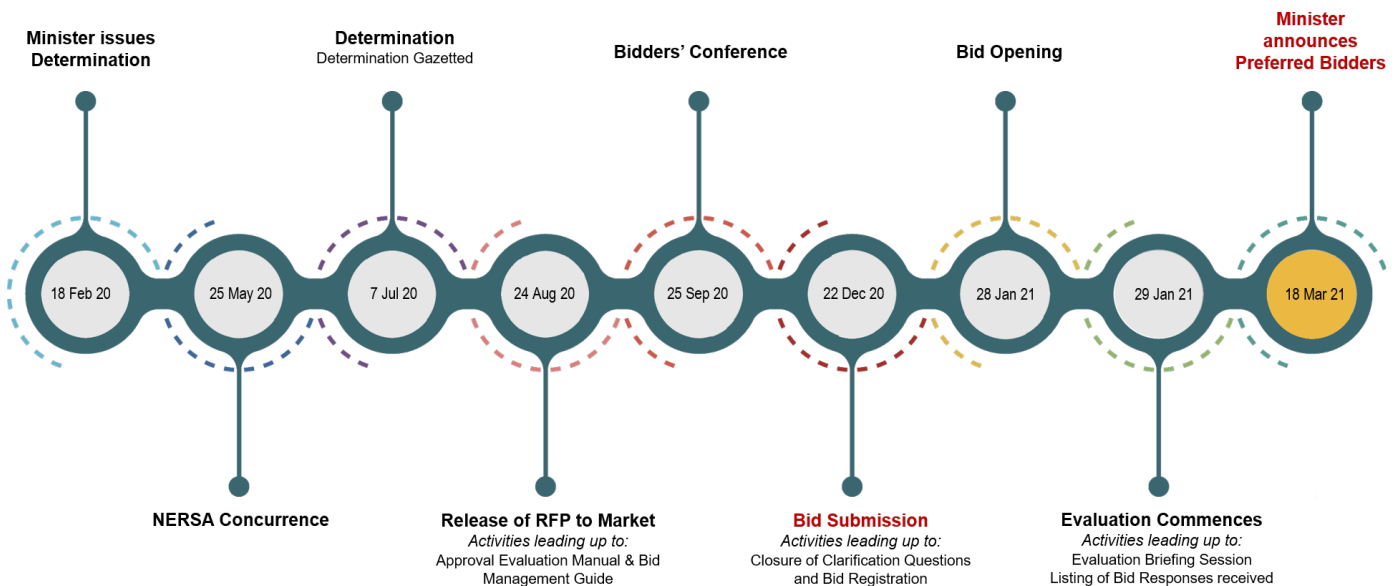
The defining and innovative technical feature of the RMIPPPP is that multiple generation facilities located at different geographical locations could be bid as a single dispatchable Project, without being prescriptive on the types of technologies. This was to enable developers to take advantage of the cheaper non-dispatchable technologies that could be bundled together with the dispatchable facility to create an economically competitive dispatchable Project. As all projects are to be dispatchable, the SO will have the choice of dispatching each project on the basis of an economic merit order, which will ultimately benefit the South African consumer.

In response to the current supply constraints the RMIPPPP had very tight deadlines to reach commercial operation as soon as possible, but no later than December 2022. The RMIPPPP was specifically aimed at attracting the participation of projects that meet the technical requirements, and that are fully developed or near ready to be able to connect to the national grid and be operational within a short space of time.

The RMIPPPP is therefore fundamentally different from the self-dispatch nature of the Renewable



Energy Independent Power Producer Procurement Programme (REIPPPP) and other programmes that targeted specific technologies (e.g. coal). Not only is the design of the RMIPPPP RFP unique, procurement documents were also produced on record time in response to the current electricity supply challenges. Thankfully the market also responded timeously during bid submission as demonstrated in this timeline:



*Risk Mitigation IPP Procurement Programme
Timeframes as at 15 March 2021*

Bid Evaluation is based on robust qualification and competitive criteria, and conducted independently

The IPPPPP RFPs are designed based on the principles of minimum technical, financial, economic development and legal qualification criteria that a bidder is required to comply with prior to the price evaluation process. This procurement approach is in compliance with the procurement laws of South Africa. The procurement documents are developed by IPP Office with support from independent reputable transaction advisory firms, and evaluation is undertaken by an independent evaluation committee, similarly made up of an independent team of transaction advisors.

The RMIPPPP RFP design and evaluation was conducted on this exact basis. Bids needed to meet the minimum technical, financial, economic development and legal qualification criteria for the procurement of specific power system services and performance criteria, from various generation technologies, prior to being evaluated on a 90/10 weighting basis of Evaluation Bid Price and Economic Development commitments. The qualification criteria included, amongst others:

- Technical criteria in respect of generation capacity to be provided, the availability of the energy in terms of SO requirements, and confirmation from Eskom of access to the national grid;
- Confirmation that the Bidder has the required financial backing and a bid guarantee from financiers;
- Confirmation of the status of the company or the Joint Venture, including the required BB-EEE Contributor Level status;

- Confirmation that the bidder meets the required South African Entity Participation (SAEP) requirements of 49%, which specifically refers to shareholding by South African Citizens in the Project Company undertaking the Project;
- Compliance with the minimum thresholds of the Economic Development obligations in respect of Job creation, Local Content, Ownership, Management Control, Enterprise and Supplier Development, Socio Economic Development and Skills Development; and
- Price, which is evaluated against internationally benchmarked prices for various technologies.

The Compliant Bids that achieved the highest scores in terms of the 90/10 principle based on the lowest bid evaluation tariff and highest economic development commitments, and within a cumulative contracted capacity of 2,000MW, were then selected as a Preferred Bidder for the RMIPPPP.

Bid Evaluation of RMIPPPP

A total of 8 Preferred Bidders and 3 Eligible Bidders were announced by the Minister on 18th March 2021, totalling 1 845.76MW and 150MW respectively. Detailed information of the Preferred Bidder projects is available here www.ipp-projects.co.za/PressCentre.

The different technologies bid are indeed all envisaged under the IRP including Gas (LNG) and Storage (Batteries). The hybrid nature of most of the projects, and the competition, achieved a level playing field under the RMIPPPP (28 Bids submitted, totalling 5117MW).

“The different technologies bid are indeed all envisaged under the IRP including Gas (LNG) and Storage (Batteries)”

Key facts regarding the RMIPPPP qualification criteria

Some of the misconceptions in the media around the cost, technical and environmental requirements of the RMIPPPP need specific clarification.

Firstly, the minimum dispatch commitment under the RMIPPPP is for a 50% load factor in a year, over the lifetime of the Power Purchase Agreement (20 years).

Bidders were required to provide Charge Rates to be used for the calculation of Underlying Price A (at 100% load factor), Underlying Price B (at 75% load factor) and to calculate the Evaluation Price in accordance with the specific requirements set out in Financial Qualification Criteria in the RFP.

The Evaluation Price is a weighted price made up of 95% for Capacity and Energy Output and 5% for the provision of Ancillary Services. The Evaluation Price is also required to include all grid connection costs, the impact of carbon tax if applicable and the cost of fuel (based on the forecast provided by the Department), if applicable.

The Evaluation Price furthermore represents an aggregated price that is built up from the Capacity, Fixed O&M, Variable Cost and Fuel Charge Rates (collectively 95% of the Evaluation Price) together with an allowance for Ancillary Services (5% of the Evaluation Price). The relative weightings between the various Charge Rates reflect the particular technology solution proposed by a Bidder.

For the first time, an IPP Programme has introduced foreign currency based fuel technologies in the Gas (LNG) projects that were selected.. In the case of these gas projects, it is important to note that NERSA will regulate the maximum price of LNG which is no different than what is currently the case for LPG and Diesel.

The 20-year term of the PPA is aligned to the REIPPPP, however there are fundamental differences in the risk allocation to the Buyer. Whereas under the self-dispatch regime of the REIPPPP there is a take or pay obligation from the Buyer, this is not the case under the RMIPPPP. The minimum dispatch commitment from the Buyer means that the projects will have to rely on the Buyer to issue a dispatch instruction. The tariff is an all-in tariff with the IPP taking all risks associated with availability and performance. The PPA provides for a penalty deduction from the Capacity Charge if there is no availability. Energy output will only be paid for if delivered in response to a dispatch instruction, taking into account the minimum load commitment from the Buyer.

“Whereas under the self-dispatch regime of the REIPPPP there is a take or pay obligation from the Buyer, this is not the case under the RMIPPPP”

The 20-year term of the PPA is necessary to enable the project to recover the cost of establishing the generation capacity and ensure its availability to generate electricity when called upon through a dispatch instruction from the Buyer. The term of the PPA enables the IPP to be able to serve its debt, equity and other obligations including fuel off take agreements. Without this longer term certainty of the 20-year PPA, the prices of these projects could have as much as tripled.

“Without the longer term certainty of the 20-year PPA, the prices of these projects could have as much as tripled”

Local Content is a key qualification criteria in the RFP. As part of the qualification criteria Bidders have to demonstrate a 40% threshold to pass the qualification criteria. Thereafter, Bidders were scored on the commitment made on Local Content in the Bespoke Scorecard, which was developed in consultation with dtic and National Treasury, and for which exemptions were required under the PPPFA and BBB-EE legislation. The benefit of this is that it allows the programme to make forward looking commitments which will last over the 20 years of the contract.

It is important to understand that Local Content is calculated as a percentage of Total Project Value. Total Project Value is calculated taking into account certain excluded amounts such as banking cost and lease cost in respect of the project site or the project. It is also a feature of the RMIPPPP, acknowledging the shortcomings in the local manufacturing sector, that all Bidders could apply to the dtic for exemptions from certain Local Content designations as published by National Treasury and that such exemptions would be taken into account during the evaluation. This regime was available to all Bidders and was granted on a case by case basis in respect of the applications received from Bidders. The DMRE is not involved in the process of granting exemptions.

The decision by government to appoint the RMIPPPP preferred bidders was also informed by a number of economic considerations. The ability to get MW on line quickly through these projects was a key factor, but broader economic multiplier impacts were just as, if not more, important.



Through the RMIPPPP it has been proven that gas is one of the cheaper options to balance the energy system, with combined renewables and battery energy storage being competitive, but not necessarily the cheapest.

The introduction of Natural Gas in the broader South African energy mix is an important step in our energy transition. The FSRU infrastructure at the ports can be used as a stepping stone to enable further opportunities for local industrialization and manufacturing that are currently utilizing higher cost fuel, as recognised in the IRP2019.

The new gas supply infrastructure also opens discussions on the possibility of repurposing old Eskom coal-fired power stations to operate on gas, in the areas where there are concerns about the decommissioning of the old coal-fired power plants.

As we develop a gas industry in South Africa, we have to appreciate that we are not going to manufacture everything locally from day one. This was exactly the same situation when we introduced renewables into the energy mix 10 years ago. We will have to rely on international suppliers to kick start this process. Similarly, we do not currently have local LNG supply available in the economy, but recent explorations and findings offer very exciting prospects and it is likely that, in the future, local gas will become the cheapest fuel option, because it will be sourced closest to where it will be required and used.

What happens next?

There are several steps to be taken for these projects to reach financial close, most of which are the preferred bidders' risk and responsibility. This includes obtaining the necessary final environmental authorisations, based on the draft final scoping reports and studies that were required to have been submitted by the bidders during bid submission. Other requirements include finalising relevant rights and permits from other entities, including the National Port Authorities, as well as generation licences from the Energy Regulator (Nersa). The RFP is very specific on the requirements that need to be fulfilled in order for the project to sign a Power Purchase Agreement (PPA), including legal and regulatory approvals, rights, licenses and permits. No PPA can be entered into unless all the requirements as set out in the RFP have been fulfilled.

“No PPA can be entered into unless all the requirements as set out in the RFP have been fulfilled”

In summary

The outcomes of the RMIPPPP will, once the contracts are concluded, provide the Buyer with powers system services procured in a fair, transparent and competitive way. These projects will be available to generate energy output when called upon (to avoid load shedding) and provide ancillary services to reduce the significant cost of using diesel that is currently the only option available to the Buyer. At the same time the programme will support socio-economic development, job creation, local manufacturing and South African participation.



**APPENDIX 7.3: AEL
ACKNOWLEDGEMENT LETTER**



**environment, forestry
& fisheries**
Department:
Environment, Forestry and Fisheries
REPUBLIC OF SOUTH AFRICA

South African Atmospheric Emission Licensing & Inventory Portal

SAAELIP - Facility

CONFIRMATION OF SUBMITTAL

1. Your application has been received and will be reviewed shortly.
 2. Check your account, email and text message for system notification at various mile stones.
- Thank you for using the SNAEL system.

Please click [Here](#) to print your receipt.

Submittal Summary

Submittal ID:	4418	Submittal Name:	AEL Application
Submitted Date:	10/6/2021 10:47:46 AM	Submitted by:	Ravin Rajoo 164 Totis Street City of Tshwane Metropolitan Municipality GT 0027 0837878600 ravinrajoo@powershipsa.co.za
Status:	Complete Submittal	Submission Method:	On-line submission

Submittal Form List

- A. General Information
- B. Contact Information
- C. Raw Materials & Production
- D. Control Device
- E. Stack
- F. Emission Unit
- G. Reporting Group
- H. Activity and Emission
- I. Monitoring, Management, & Mitigation

Attachment List

AEL Signature Form (Required) -- Online

- ael sign RB.jpg

Complaints Register (Part A: Section A.2) (Required) -- Online

- COMPLAINTS REGISTER.docx

Process Flow Diagram (Part A: Section A.4) (Required) -- Online

- process flow.jpg

Supporting Documents (Optional) -- Online

- bwWed02223092020.pdf
- zmMon02021092020.pdf
- Karpowership SIP Status RMIPPPP 29032021.pdf
- Proof_Of_Payment DEFF 2.pdf
- AIR Triplo4 KarPower RichardsBay - 14 April 2021- final.pdf

Certification Receipt

Certification Statement: **Declaration of accuracy of information provided:
Application for an atmospheric emission license / provisional atmospheric emission license as envisaged in chapter 5 of the National Environmental Management: Air Quality Act, 2004 (Act No. 39 of 2004).
I, as the Accounting Officer or delegated by the Accounting Officer, declare that the information provided in this application or attached to the application is, to the best of my knowledge, in all respects factually true and correct. I am aware that the supply of false or misleading information in the application form is a criminal offence in terms of section 51(1)(f) of the Act.**

Certification Question: **who is your favorite author?**

Certification Question Answer: *********

PIN Number: *********

Responsible Officer: **Ravin Rajoo**

Sender IP Address: **102.22.252.51**



GovOnline, Copyright ©1994-2021 enfoTech & Consulting Inc. All rights reserved.
[Terms of Use](#) | [Privacy Statement](#)

(Last modified Time: 2019-08-07 03:34 PM PID: 12PRDWEB081)



HEALTH & SAFETY SURVEY-KPS PROJECT-RCB SITE VISIT-INDUCTION SESSION
30 APRIL 2021
PORT OF RICHARDS BAY

ATTENDANCE REGISTER:

<u>NAME</u>	<u>COMPANY</u>	<u>DESIGNATION</u>	<u>Email Address</u>	<u>SIGNATURE:</u>
Simphine Mthembu	TNPA	Civil Engineer	Simphine.mthembu2@transnet.net	
Sanelile Xaba	King Cetshwayo District	Air Quality Compliance	xabasa@engcetshwayo.gov.za	
Shanice Singh	Triplo 4	Environmental Consultant	shanice@triplo4.com	
Mark Zwirner	Muga-Nulu	Air quality study for Kapsing	mark@munya-nulu.co.za	
FRED DUFRESSES	021	CHSA	FRED@OXAGENTWENTYONE.COM	
MTHOBISI NGORBO	DFFE	AQO	mngobob@environment.gov.za	
BONGANI NDABA	TNPA	Risk Manager	bongani.ndaba@transnet.net	
ASHVEER SATHANUNG	TNPA	CIVIL ENGINEER	Ashveer.Sathanung@transnet.net	



<u>NAME</u>	<u>COMPANY</u>	<u>DESIGNATION</u>	<u>Email Address</u>	<u>SIGNATURE:</u>

APPENDIX 7.4: CAA APPROVALS



Triplo4 Sustainable Solutions (Pty) Ltd

**Suite 5, The Circle, Douglas Crowe Drive
Ballito
KwaZulu Natal
4420**

Enquiries: L Stroh

Tel: 011 545 1232

Strohl@caa.co.za

03 May 2021

Ref. CAA_2021_1_080

Attention: Hantie Plomp

Conditional Approved of Proposed Power Plant, KPS Richards Bay.

After evaluating the site position to the obstacle application form dated 25 November 2020, in principle the SACAA has **no objection**, the following conditions and restrictions applies:

- Non-reflecting paint and materials should be applied to reduce glare and prevent blinding pilots.
- Caution be taken on any hot air/gasses as it has seriously effect on flying conditions of Aircraft,.
- Structure development is restricted to an all-inclusive, not exceeding height of 56.18m that include power lines (above ground level).
- Kindly note that approval for the construction of cranes, if used, must be obtained 6 weeks prior to construction.

The above statement is conditional to the developer, providing the SACAA with the "as built" parameters of the facility, which includes the height and final layout of building. The SACAA will provide a **final approval** on receipt of **details on "as built"**.

This conditional approval is valid for 5 years from the date of this letter.

Note that this SACAA letter of no objection does not substitute or replace other approvals which may be required by the applicant.

Yours truly,

Lizell Stroh

Obstacle Inspector

PANS-OPS Section

Air Navigation Services Department

Tel: +27 11 545 1232 | Mobile: +27 083 461 6660

Email: Strohl@caa.co.za

APPENDIX 7.5: EXISTING AUTHORISATIONS



NATIONAL ENVIRONMENTAL AUTHORIZATION SYSTEM PUBLIC PORTAL EIA REGULATIONS 2010

[HOME](#)

Applications in your area

Competent Authority: Activity 1:

District Municipality: Activity 2:

Local Municipality: Activity 3:

Region: Project Type:

Application Type: BA or Scoping:

End Date: Start Date:

Search Results

Competent Authority	District M.	Local M.	Region	Activity	Longitude	Latitude	Number of Applications
Kwa-zulu Natal	Uthungulu	Umhlatuze-Richards Bay,Umhlathuzi,					1
Kwa-zulu Natal	Uthungulu	Umhlatuze-Richards Bay,Umhlathuzi,			28 ,45 , 37.31	32 , 00 , 22.6	1
Kwa-zulu Natal	Uthungulu	Umhlatuze-Richards Bay,Umhlathuzi,			28 31 29.661	32 20 7.28	1

Please indicate if you are:(For Statical purposes)

- EAP
- I and AP's
- Government Official
- Other

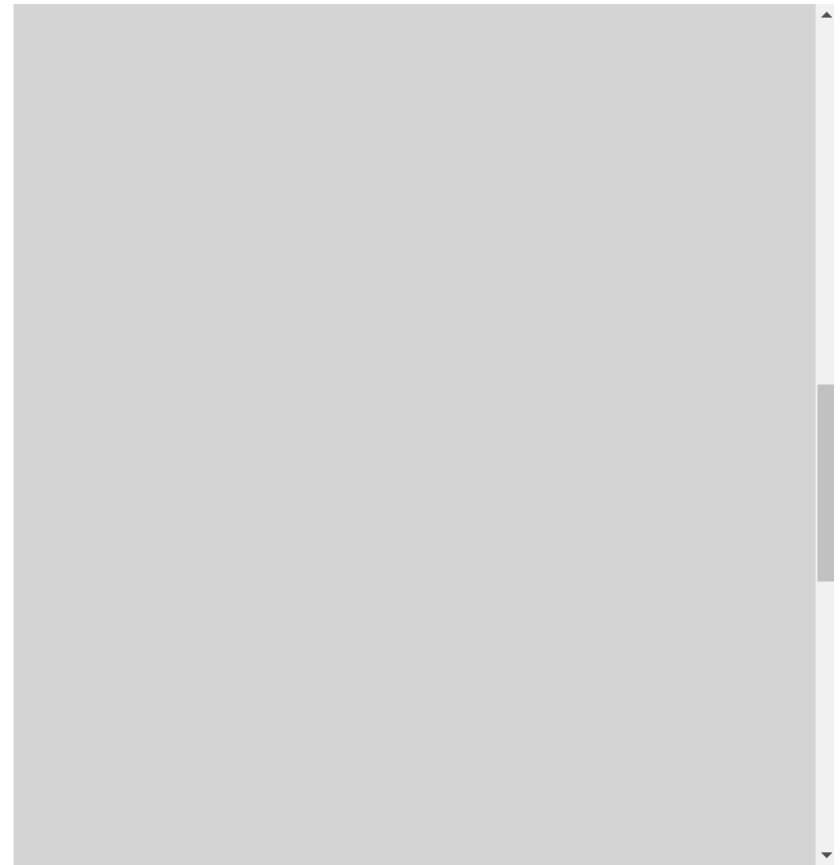
REPORTS

- EIA Applications Per Province
- EIA Applications Per Project Type
- Applications Per EAP/Applicant
- Applications in your area
- EIA Applications Chart Reports
- EIA Application History
- Generic Report Summary - Basic Assessment
- Generic Report Summary - Scoping & EIR

[CONTACT DETAILS](#)

		Bay,Umhlathuzi,					
Kwa-zulu Natal	Uthungulu	Umhlathuze-Richards Bay,Umhlathuzi,			28 31 29.661	32 20 7.28	1
Kwa-zulu Natal	Uthungulu	Umhlathuze-Richards Bay,Umhlathuzi,			28 44 48.5	32 06 24.1	1
Kwa-zulu Natal	Uthungulu	Umhlathuze-Richards Bay,Umhlathuzi,			28 46 15.30	32 01 47.18	1
Kwa-zulu Natal	Uthungulu	Umhlathuze-Richards Bay,Umhlathuzi,			28 46 20	31 54 30	1
Kwa-zulu Natal	Uthungulu	Umhlathuze-Richards Bay,Umhlathuzi,			28 46 25.99	32 01 03.46	1
Kwa-zulu Natal	Uthungulu	Umhlathuze-Richards Bay,Umhlathuzi,			28 46 30.66	31 37 29.08	1
Kwa-zulu Natal	Uthungulu	Umhlathuze-Richards Bay,Umhlathuzi,			28 46 47.5	32 02 10.4	1
Kwa-zulu Natal	Uthungulu	Umhlathuze-Richards Bay,Umhlathuzi,			28 47 24.63	32 02 33.89	1
Kwa-zulu Natal	Uthungulu	Umhlathuze-Richards Bay,Umhlathuzi,			28 49 02.75	32 04 15.33	1
Kwa-zulu Natal	Uthungulu	Umhlathuze-Richards Bay,Umhlathuzi,			28 49 17.58	32 03 39.80	1
Kwa-zulu Natal	Uthungulu	Umhlathuze-Richards Bay,Umhlathuzi,			28 51 25.98	32 01 51.39	1
Kwa-zulu Natal	Uthungulu	Umhlathuze-Richards Bay,Umhlathuzi,			28, 41, 07.0	32, 08, 10.1	1
Kwa-zulu Natal	Uthungulu	Umhlathuze-Richards Bay,Umhlathuzi,			28, 45, 31.26	32, 07, 50.58	1
Kwa-zulu Natal	Uthungulu	Umhlathuze-Richards Bay,Umhlathuzi,			28, 52,55.88	31,54,01.50	1

Kwa-zulu Natal	Uthungulu	Umhlathuze-Richards Bay, Umhlathuzi,			28, 52,55.88	31,54,01.50	1
Kwa-zulu Natal	Uthungulu	Umhlathuze-Richards Bay, Umhlathuzi,			28,43,13.85	31,51,45.30	1
Kwa-zulu Natal	Uthungulu	Umhlathuze-Richards Bay, Umhlathuzi,			-28,44,09.80	32,02,10.31	1
Kwa-zulu Natal	Uthungulu	Umhlathuze-Richards Bay, Umhlathuzi,			28,46,40.8	32,03,46.0	1
Kwa-zulu Natal	Uthungulu	Umhlathuze-Richards Bay, Umhlathuzi,		LN 1 - 10(i), LN 1 - 11(i), LN 1 - 14(i)			1
Kwa-zulu Natal	Uthungulu	Umhlathuze-Richards Bay, Umhlathuzi,		LN 1 - 11(i)			1
Kwa-zulu Natal	Uthungulu	Umhlathuze-Richards Bay, Umhlathuzi,		LN 1 - 11(i), LN 1 - 18(i)			1
Kwa-zulu Natal	Uthungulu	Umhlathuze-Richards Bay, Umhlathuzi,		LN 1 - 11(i), LN 1 - 18(ii)			1
Kwa-zulu Natal	Uthungulu	Umhlathuze-Richards Bay, Umhlathuzi,		LN 1 - 11(iii), LN 1 - 11(vi)			1
Kwa-zulu Natal	Uthungulu	Umhlathuze-Richards Bay, Umhlathuzi,		LN 1 - 11(x), LN 1 - 18(ii)	28 44 56.71S	32 3 8.15E	1
Kwa-zulu Natal	Uthungulu	Umhlathuze-Richards Bay, Umhlathuzi,		LN 1 - 13	28 48 09.80	31 53 17.79	1
Kwa-zulu Natal	Uthungulu	Umhlathuze-Richards Bay, Umhlathuzi,		LN 1 - 13, LN 1 - 22(i)			1
Kwa-zulu Natal	Uthungulu	Umhlathuze-Richards Bay, Umhlathuzi,		LN 1 - 13, LN 1 - 9(i)			1
Kwa-zulu Natal	Uthungulu	Umhlathuze-Richards Bay, Umhlathuzi,		LN 1 - 24			1



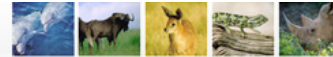
Kwa-zulu Natal	Uthungulu	Umhlathuze-Richards Bay, Umhlathuzi,		LN 1 - 24			1
Kwa-zulu Natal	Uthungulu	Umhlathuze-Richards Bay, Umhlathuzi,		LN 1 - 25			1
Kwa-zulu Natal	Uthungulu	Umhlathuze-Richards Bay, Umhlathuzi,		LN 1 - 9(i)			1
Kwa-zulu Natal	Uthungulu	Umhlathuze-Richards Bay, Umhlathuzi,		LN 1 - 9(i), LN 2 - 15(i)			1
Kwa-zulu Natal	Uthungulu	Umhlathuze-Richards Bay, Umhlathuzi,		LN 2 - 11(i), LN 2 - 18(i)			1
Kwa-zulu Natal	Uthungulu	Umhlathuze-Richards Bay, Umhlathuzi,		LN 2 - 9			1
Kwa-zulu Natal	Uthungulu	Umhlathuze-Richards Bay, Umhlathuzi,		LN 3 - 23			1
Kwa-zulu Natal	Uthungulu	Umhlathuze-Richards Bay, Umhlathuzi,	N/A		28 49 09.20	32 03 50.71	1
Kwa-zulu Natal	Uthungulu	Umhlathuze-Richards Bay, Umhlathuzi,	N/A		32 01 40.94	28 44 28.80	1
Kwa-zulu Natal	Uthungulu	Umhlathuze-Richards Bay, Umhlathuzi,	N/A	LN 1 - 11(i), LN 1 - 18(i)	28 53 28.26	31 46 33.15	1
Kwa-zulu Natal	Uthungulu	Umhlathuze-Richards Bay, Umhlathuzi,	N/A	LN 1 - 11(xi), LN 1 - 18(i)	28 52 54.64	31 54 21.92	1
Kwa-zulu Natal	Uthungulu	Umhlathuze-Richards Bay, Umhlathuzi,	N/A	LN 1 - 13	28 45 09.62	32 01 08.25	1
Kwa-zulu Natal	Uthungulu	Umhlathuze-Richards Bay, Umhlathuzi,	N/A	LN 1 - 13, LN 1 - 22(i)	28 46 25.84	31 56 40.72	1
Kwa-zulu Natal	Uthungulu	Umhlathuze-Richards Bay, Umhlathuzi,	N/A	LN 1 - 18(i), LN 1 - 22(i), LN 1 -	28 42 0.03	32 9 5.13	1

Kwa-zulu Natal	Uthungulu	Richards Bay, Umhlathuzi,		2 - 15(i)				
Kwa-zulu Natal	Uthungulu	Umhlathuze-Richards Bay, Umhlathuzi,		LN 2 - 11(i), LN 2 - 18(i)				1
Kwa-zulu Natal	Uthungulu	Umhlathuze-Richards Bay, Umhlathuzi,		LN 2 - 9				1
Kwa-zulu Natal	Uthungulu	Umhlathuze-Richards Bay, Umhlathuzi,		LN 3 - 23				1
Kwa-zulu Natal	Uthungulu	Umhlathuze-Richards Bay, Umhlathuzi,	N/A		28 49 09.20	32 03 50.71		1
Kwa-zulu Natal	Uthungulu	Umhlathuze-Richards Bay, Umhlathuzi,	N/A		32 01 40.94	28 44 28.80		1
Kwa-zulu Natal	Uthungulu	Umhlathuze-Richards Bay, Umhlathuzi,	N/A	LN 1 - 11(i), LN 1 - 18(i)	28 53 28.26	31 46 33.15		1
Kwa-zulu Natal	Uthungulu	Umhlathuze-Richards Bay, Umhlathuzi,	N/A	LN 1 - 11(xi), LN 1 - 18(i)	28 52 54.64	31 54 21.92		1
Kwa-zulu Natal	Uthungulu	Umhlathuze-Richards Bay, Umhlathuzi,	N/A	LN 1 - 13	28 45 09.62	32 01 08.25		1
Kwa-zulu Natal	Uthungulu	Umhlathuze-Richards Bay, Umhlathuzi,	N/A	LN 1 - 13, LN 1 - 22(i)	28 46 25.84	31 56 40.72		1
Kwa-zulu Natal	Uthungulu	Umhlathuze-Richards Bay, Umhlathuzi,	N/A	LN 1 - 18(i), LN 1 - 22(i), LN 1 - 47(i)	28 42 0.03	32 9 5.13		1
Kwa-zulu Natal	Uthungulu	Umhlathuze-Richards Bay, Umhlathuzi,	N/A	LN 1 - 22(i), LN 1 - 23(i)	28 45 37.17	31 54 44.93		1
TOTAL : 43								



environmental affairs

Department:
Environmental Affairs
REPUBLIC OF SOUTH AFRICA



NATIONAL ENVIRONMENTAL AUTHORIZATION SYSTEM PUBLIC PORTAL EIA REGULATIONS 2010

[HOME](#)

Applications Per EAP/Applicant

Enter EAP/Applicant/Other :

Richards Bay Industrial Devi

Search Results

Name	Person Type	NEAS Number	Provincial Ref No.	File Reference Number	Application Type	Competent Authority	Stage	Status	Capturer	Case Officer
Richard Sihle Ngcamu	Applicant	DEA/EIA/0002356/2014	14/12/16/3/3/2/665		Scoping and Environmental Impact Reporting	DEA	Granted Authorisation Wholly	Department to Respond	Salome Mambane	Mahlatse Shubane

Please indicate if you are:(For Statical purp

- EAP
- I and AP's
- Government Official
- Other

REPORTS

- [EIA Applications Per Province](#)
- [EIA Applications Per Project Type](#)
- [Applications Per EAP/Applicant](#)
- [Applications in your area](#)
- [EIA Applications Chart Reports](#)
- [EIA Application History](#)
- [Generic Report Summary - Basic Asses](#)
- [Generic Report Summary - Scoping & E](#)

[CONTACT DETAILS](#)