




## **SOUTH AFRICA MAINSTREAM RENEWABLE POWER (PTY) LTD**

**PROPOSED CONSTRUCTION OF 132 KV POWERLINES BETWEEN THE AUTHORISED LOERIESFONTEIN 3 PV SOLAR ENERGY FACILITY (12/12/20/2321/2/AM4) AND THE AUTHORISED DWARSRUG WIND ENERGY FACILITY (14/12/16/3/3/2/690/AM4), AND FROM THE DWARSRUG WIND ENERGY FACILITY TO THE AUTHORISED NAROSIES SUBSTATION (12/12/20/2049/3), LOCATED NEAR LOERIESFONTEIN IN THE HANTAM LOCAL MUNICIPALITY, NAMAKWA DISTRICT IN THE NORTHERN CAPE PROVINCE OF SOUTH AFRICA.**

## **Public Participation Plan (PPP)**

**DEFF Reference Number.: To be Allocated**  
**Issue Date:** 14 December 2020  
**Version No.:** 1.0  
**Project No.:** 16606

<b>Date:</b>	14 December 2020
<b>Document Title:</b>	Proposed construction of 132 KV powerlines between the authorised Loeriesfontein 3 PV Solar Energy Facility (12/12/20/2321/2/AM4) and the authorised Dwarsrug Wind Energy Facility (14/12/16/3/3/2/690/AM4), and from the Dwarsrug Wind Energy Facility to the authorised Narosies Substation (12/12/20/2049/3), located near Loeriesfontein in the Hantam Local Municipality, Namakwa District in the Northern Cape Province of South Africa – <b>Public Participation Plan</b>
<b>Version Number:</b>	1.0
<b>Author:</b>	<b>Liandra Scott-Shaw (EAP)</b> B.Sc. (Hons) Ecological Science (UKZN)
<b>Checked by:</b>	<b>Stephan Jacobs (Consultant)</b> B.Sc. (Hons) Environmental Management & Analysis (UP) B.Sc. Environmental Sciences (UP)
<b>Approved by:</b>	<b>Liandra Scott-Shaw (EAP)</b>
<b>Signature:</b>	
<b>Client:</b>	SOUTH AFRICA MAINSTREAM RENEWABLE POWER (PTY) LTD

### **Confidentiality Statement**

© SiVEST SA (Pty) Ltd  
All rights reserved

Copyright is vested in SiVEST SA (Pty) Ltd in terms of the Copyright Act (Act 98 of 1978). This report is strictly confidential and is to be used exclusively by the recipient.

Under no circumstances should this report or information contained therein be distributed, reprinted, reproduced or transmitted in any form or by any means, electronic or mechanical, without the written consent of SiVEST SA (Pty) Ltd.

# TABLE OF CONTENTS

1	PROJECT DESCRIPTION .....	1
2	ASSESSMENT OF PUBLIC INTEREST .....	2
3	DETERMINE LEVEL OF PUBLIC INTEREST .....	2
4	PUBLIC PARTICIPATION PLAN, STAKEHOLDER IDENTIFICATION AND ENGAGEMENT .....	4
4.1	PUBLIC PARTICIPATION PROCESS: LEGISLATIVE REQUIREMENTS .....	4
4.1.1	COMPLIANCE WITH REGULATIONS AND SUBSEQUENT CIRCULARS .....	5
4.2	PROPOSED PUBLIC PARTICIPATION .....	5
4.3	PUBLIC PARTICIPATION WAY FORWARD .....	11
5	CONCLUSION .....	11
6	SCHEDULE .....	12

# 1 PROJECT DESCRIPTION

South Africa Mainstream Renewable Power Developments (Pty) Ltd (herein after referred to as “Mainstream”) has appointed SiVEST SA (Pty) Ltd (hereafter referred to as “SiVEST”) to undertake a Basic Assessment (BA) Process for the proposed construction of 132 kV overhead powerlines between the proposed (and authorised) 100MW Loeriesfontein 3 Photovoltaic (PV) Solar Energy Facility (SEF) ([12/12/20/2321/2/AM4](#)) and proposed (and authorised) 140MW Dwarsrug Wind Energy Facility (WEF) ([14/12/16/3/3/2/690/AM4](#)); and between the Dwarsrug WEF and the proposed (and authorised) Narosies Substation ([12/12/20/2049/3](#)) located near Loeriesfontein in the Northern Cape Province of South Africa.

The powerline from the Loeriesfontein 3 PV SEF to the Dwarsrug WEF is proposed to link the SEF to the WEF in order to create a hybrid renewable energy facility, which will ensure that electricity is constantly supplied to the national grid by at least one (1) or both technologies (namely solar PV and wind), at any given time. The powerline from the Dwarsrug WEF is proposed to tie the, above mentioned, hybrid renewable energy facility into the approved Narosies substation to feed the National grid. Separate BA processes to add battery energy storage systems (BESS) to both renewable energy facilities [Loeriesfontein 3 BESS DEFF Reference number: [14/12/16/3/3/1/2263](#) and Dwarsrug BESS DEFF Reference number: [14/12/16/3/3/1/2262](#)] are currently underway. The BESS will contribute to the hybrid renewable energy facility by storing and providing electricity for the national grid.

Two (2) powerline alternatives will be assessed to link the Loeriesfontein 3 PV SEF to the Dwarsrug WEF and a single powerline is proposed to link these two (2) facilities to the National grid from the Dwarsrug WEF. All three (3) powerline route alignments will be assessed within a 300m wide assessment corridor (150m on either side of powerline).

The route alternatives that are being considered and assessed as part of the BA process will be refined to avoid identified environmental sensitivities. As mentioned above, these alternatives provide for two (2) different power line route alignments, each contained within an assessment corridor (each 300m wide, 150m on either side of powerline).

The ‘no-go’ alternative is the option of not constructing the powerline project, which would prevent the realization of the hybrid facility and thus prevent electricity generated from renewable sources being fed into the national grid. This alternative would result in no additional environmental impact other than that assessed during the BA for the Renewable Energy (RE) facilities.

The ‘no-go’ option is a feasible option; however, this would prevent the hybrid facility from contributing to the environmental, social and economic benefits associated with the development of the renewables sector.

Accordingly, Mainstream has appointed SiVEST SA (Pty) Ltd (hereafter referred to as “SiVEST”) to act as the independent Environmental Assessment Practitioner (EAP) to undertake the BA process as required in terms of Regulation 32 of GN R326 of the EIA Regulations, 2014 (as amended on 07 April 2017).

In addition, the following specialists will subsequently be commissioned to assess the various impacts of the proposed amendment:

- Avifauna;
- Soils and Agricultural Potential;
- Biodiversity (including fauna and flora);
- Surface Water;
- Heritage and Palaeontology;
- Socio-Economic;
- Geotechnical;
- Visual.

The competent authority for the BA process is the National Department of Environment, Forestry and Fisheries (DEFF). However, the provincial authority (namely the Northern Cape Department of Environment and Nature Conservation - NC DENC) will also be consulted. All relevant legislation and guidelines will also be consulted during the BA process and will be complied with at all times.

## **2 ASSESSMENT OF PUBLIC INTEREST<sup>1</sup>**

To determine the appropriate level of public participation, it is important to assess the degree to which the public considers the proposed development to be significant and of public interest. The public will become involved according to its perception of the development.

It must be noted that the closest town (namely Loeriesfontein) is more than 50km away from the proposed project development area.

Therefore, it is important to anticipate the public's level of interest or concern regarding a project or program. The assessment is based on prior project experience in the area and consultation with the DEFF.

---

<sup>1</sup> Assessment adapted from the Portland Development Commission 10-steps to creating PPP guide

Questions		Very Low / Level 1	Low / Level 2	Moderate / Level 3	High / Level 4	Very High / Level 5
1	What is the anticipated level of conflict, concern, controversy, or opportunity?		x			
2	How significant are the potential impacts to the public		x			
3	How much do the major stakeholders care about this issue, project or program?				x	
4	What degree of involvement does the public appear to desire?		x			
5	What is the potential for public impact on the potential decision or project?			x		
6	How significant are the possible benefits of involving the public?		x			
7	How serious are the potential ramifications of NOT involving the public?			x		
8	What level of public participation does the Authority desire/expect?			x		
9	What is the possibility that the media will become interested?	x				
10	What is the probable level of difficulty in solving the problem or advancing the project?		x			
	<b>Sub Total</b>	<b>1</b>	<b>5</b>	<b>3</b>	<b>1</b>	<b>0</b>
	<b>Sub Total multiplied by level</b>	<b>1</b>	<b>10</b>	<b>9</b>	<b>4</b>	<b>0</b>
	<b>Total (addition of levels)</b>	<b>24</b>				
	<b>Level of PP required (Total / 10)</b>	<b>2.4</b>				

### 3 DETERMINE LEVEL OF PUBLIC INTEREST

The Public Participation Spectrum below illustrates the four (4) levels of public participation: Public Information, Public Input, Public Involvement and Public Collaboration. Each of these levels serves a different purpose with a different outcome.

Based on our results from the assessment in **Chapter 2**, the Public Participation Spectrum below identifies the appropriate level of public participation as: **"Solicit Input / Consult"**.

Public Participation Spectrum			
Inform (1-1.9)	Solicit Input / Consult (2-2.9)	Involve (3-3.9)	Collaborate (4-4.9)
One-way communication between Dwarsrug WEF and Loeriesfontein 3 PV and the public to provide the public with balanced and objective information to assist them in understanding the problems, alternatives, opportunities and/or solutions.	Seek public feedback on a proposal, analysis or alternatives. Requires a response from the public, but limited opportunity for public dialogue.	Work directly with the public throughout the process to ensure that issues, aspirations and concerns are consistently understood and considered. Includes elements of public information and outreach, but adds a third dimension of two-way communication.	To collaborate with the public on some or all aspects of the planning or decision including the development of alternatives and the identification of the preferred solution.
Public Engagement			
Keep stakeholders informed.	Keep stakeholders informed, listen to and acknowledge concerns, aspirations and provide feedback on how public input influenced the decision.	Work with stakeholders to ensure that their concerns, aspirations and issues are directly reflected in the alternatives developed and provide feedback on how public input influenced the decision.	Look to stakeholders for direct advice and innovation in formulating solutions and incorporate their recommendations into the decisions to the maximum extent possible.
Example of Tools to use			
Background Information Document	<b>Data Free Portal</b>	Public Meeting (virtual if deemed necessary)	Public Meeting (virtual if deemed necessary)
News Paper Adverts	<b>Newspaper Advert</b>	Data Free Portal	Data Free Portal
SMS/Email notifications	<b>SMS / Email notifications</b>	Background Information Document	Background Information Document
PowerPoint Presentations	<b>PowerPoint Presentations (emailed if required)</b>	News Paper Advert	News Paper Adverts
Posters on /close to site	<b>Posters on / close to project site</b>	SMS/Email notifications	SMS/Email notifications
All documents available on SiVEST Website	<b>All documents available on Data Free Portal</b>	PowerPoint Presentations (emailed if needs be)	PowerPoint Presentations (emailed)
		Workshop (Virtual if deemed necessary)	Workshop

<b>Public Participation Spectrum</b>			
<b>Inform (1-1.9)</b>	<b>Solicit Input / Consult (2-2.9)</b>	<b>Involve (3-3.9)</b>	<b>Collaborate (4-4.9)</b>
		Focus Group Meetings (Virtual if deemed necessary)	Focus Group Meetings
		All documents available on Data Free Portal and SiVEST Website	Board-appointed commission
			Special task force
			All documents available on SiVEST Website
Adapted from the IAP2 Public Participation Spectrum			



## 4 PUBLIC PARTICIPATION PLAN, STAKEHOLDER IDENTIFICATION AND ENGAGEMENT

### 4.1 PUBLIC PARTICIPATION PROCESS: LEGISLATIVE REQUIREMENTS

Public participation is the cornerstone of any BA process. The principles of NEMA as well as the EIA Regulations, 2014 (as amended), govern the BA process, including public participation. These include provision of sufficient and transparent information on an on-going basis to Interested and/or Affected Parties (I&APs) (**Appendix 1**) and key stakeholders, such as Organs of State (OoS) / authorities (**Appendix 2**), to allow them to comment, and to ensure the participation of previously disadvantaged people, women and the youth.

The public participation process is primarily based on two (2) factors, namely:

1. Firstly, on-going interaction with the environmental specialists and the technical teams in order to achieve integration of technical assessment and public participation throughout; and
2. Secondly, to obtain the bulk of the issues to be addressed early on in the process, with the latter half of the process designed to provide environmental and technical evaluation of these issues. These findings are presented to stakeholders for verification that their issues have been captured and for further comment.

The public participation (PP) process will be undertaken in accordance with the requirements of Regulations 39 to 44 of the Environmental Impact Assessment (EIA) Regulations, 2014, as amended, (GNR 982). The primary aims of the Public Participation Process are:

- To inform I&APs and key stakeholders of the proposed development;
- To initiate meaningful and timeous participation of I&APs and key stakeholders;
- To identify issues and/or concerns of key stakeholders and I&APs with regards to the proposed development;
- To promote transparency and an understanding of the proposed development and its potential environmental impacts;
- To provide information used for decision-making;
- To provide a structure for liaison and communication with I&APs and key stakeholders;
- To assist in identifying potential environmental impacts associated with the proposed development;
- To ensure inclusivity (the views, needs, interests and values of I&APs and key stakeholders must be considered in the decision-making process);
- To focus on issues relevant to the proposed development and issues considered important by I&APs and key stakeholders;
- To provide responses to I&AP and key stakeholder queries / comments / concerns;
- To encourage co-regulation, shared responsibility and a sense of ownership; and
- Meet the requirements for Public Participation as stated in Chapter 6 of the EIA Regulations, 2014 (as amended).

In addition to the guidance of the Public Participation Process in the EIA Regulations, 2014 (as amended), every effort was also made to conform to the requirements of the Promotion of Administrative Justice Act, 2000 (Act No. 3 of 2000).

### 4.1.1 COMPLIANCE WITH REGULATIONS AND SUBSEQUENT CIRCULARS

In terms of Chapter 6 of the EIA Regulations, 2014 (as amended), a BA application requires a 30-day Public Participation Process (PPP). However, in light of the country wide restriction enforced in terms of Government Gazette 43096 (GN R 313) which has resulted in the entire country being placed in a national state of disaster and limits the movement and gatherings of people in an effort to curb the spread CoVID-19, the public participation process has been amended and adjusted in light of these restrictions<sup>2</sup>.

As a result, **alternative means** of undertaking the required stakeholder engagement has been designed and implemented by SiVEST to ensure that all I&APs are afforded reasonable opportunity to engage meaningfully. As such, SiVEST are proposing the following amendments to the public participation process, described in more detail below. This Public Participation plan, detailed below, is being submitted to the DEFF for their review and approval.

### 4.2 PROPOSED PUBLIC PARTICIPATION

**Figure 1** below provides an overview of the tools that are available to I&APs and stakeholders to access project information and interact with the public participation team to obtain project information and resolve any queries that may arise, and to meet the requirements for public participation.

---

<sup>2</sup> General Notice issued by the DEFF on 24 March 2020

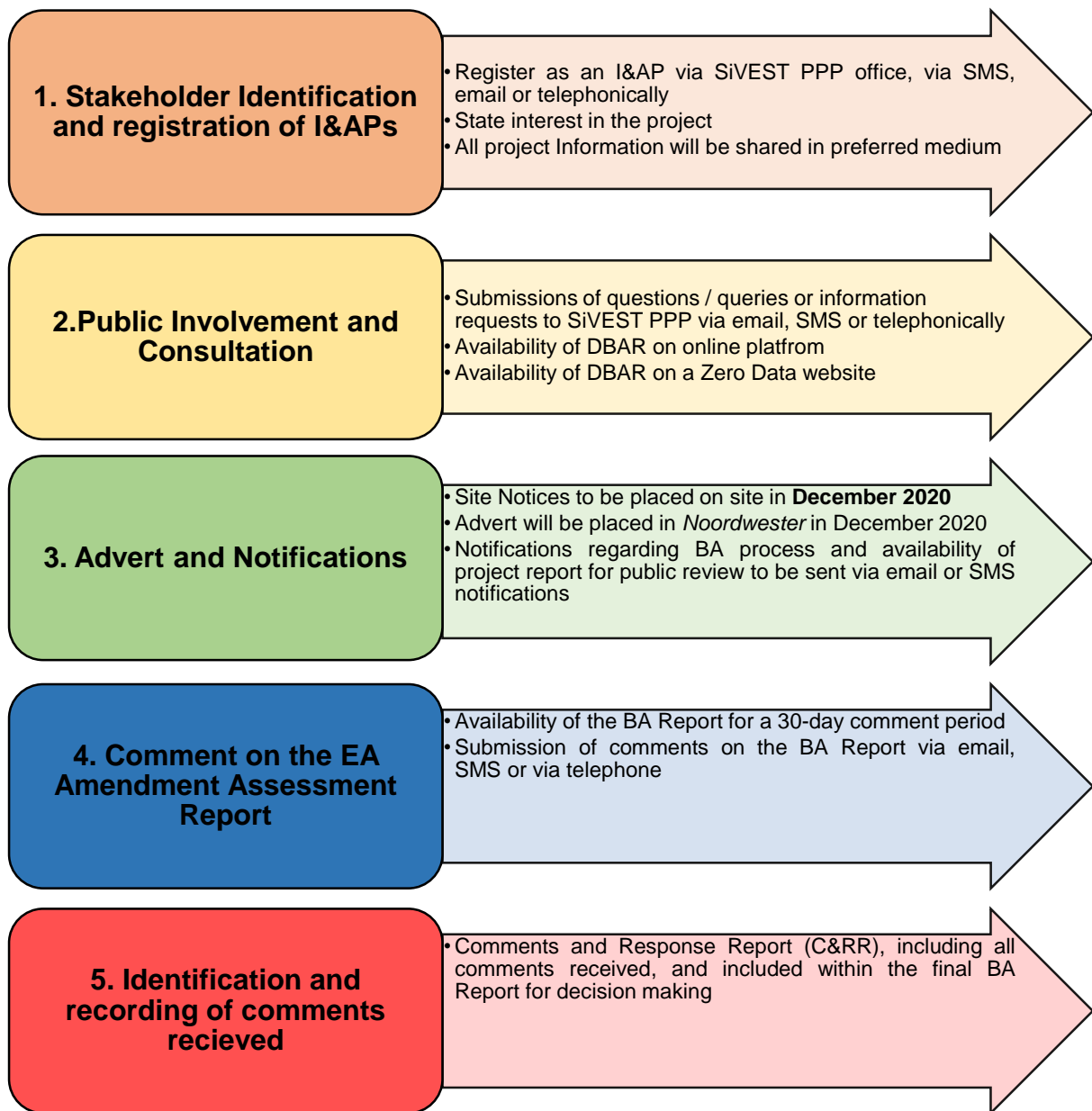


Figure 1: Schematic illustration of PPP tools

**Table 1: Public Participation Plan: Discussion of approach and methodology to meet the requirements of the Regulations**

Regulation/ circular	Approach & Methodology to meet requirements	Special requests
<p>Regulation 40(1), Regulation 40(3) &amp; Regulation 43 – provide all potential or registered interested and affected parties, including the competent authority, <b>access to project related information</b>, access to the BA report which will be made available for a period of at least 30 days to <b>submit comments on draft reports</b> prior to submission of final reports for decision-making.</p>	<p>It is the intention to release all relevant project information to all interested and affected parties for a <u>30-day period</u>.</p> <p><b>Notification</b> of Basic Assessment (BA) process to be undertaken for application for <u>Environmental Authorisation (EA)</u> to be distributed using the following means:</p> <ul style="list-style-type: none"> <li>• Issuing of the notifications and initial landowner consultation (to be circulated to all I&amp;APs in December 2020) (proof to be included in BA Report).</li> <li>• Placement of site notices in English and Afrikaans (as per regulations) along the entrance road to the application site (30° 21' 44.5"S; 019° 34' 40.3"E), as well as at the Helios Substation (30° 30' 6.82"S; 19° 33' 25.49"E). To be placed in December 2020 (proof to be included in BA Report).</li> <li>• Notification letter to be sent via E-mail or sms (if cellphone number / email is available, it is assuming the I&amp;AP have an email or cellphone).</li> <li>• <b>ALL identified I&amp;APs has access to at least one (1) of these (Appendix 1 and Appendix 2)</b></li> <li>• Public notification of the BA process will be advertised in a local newspaper (namely the <i>Noordwester</i>) in December 2020, as required according to Regulation 41(2) (c) of the EIA Regulations (2014), as amended. Proof to be included in BA Report.</li> </ul> <p><b>Availability of report for review:</b></p> <ul style="list-style-type: none"> <li>• Report available on the Data Free Portal on SiVESTs website for free download.</li> <li>• Electronic copies can be made available to parties via a secure digital link that will be emailed upon request for the documentation.</li> <li>• CDs / Flash drive to be posted, only if requested<sup>3</sup>.</li> </ul> <p>The Draft BA Report will be located at the following location and will be available for review at the below designated time:</p> <p><b>Availability to comment:</b> Comments can be submitted in various mediums detailed in the row below, and will be captured and responded to by the SiVEST PPP Office.</p>	<p><u>N/A</u></p>

<sup>3</sup> The use of postage will only be required should and I&AP request that the documents be sent to them via CD or flash drive. All I&APs and OoS have either email / sms and will be sent an electronic link to the website where the reports can be reviewed or downloaded, as well as a data free portal where the report can be reviewed. Should any I&APs / stakeholders / Oos request documents via post or courier, this will be indicated and proof will be provided in the final report.

Regulation/ circular	Approach & Methodology to meet requirements	Special requests
<p>Regulation 40(2) - Provide access to all project information that has the potential to influence any decision regarding the application, unless protected by law, and must include <b>consultation</b> with Competent Authority, Organs of State &amp; registered I&amp;APs.</p> <p>Regulation 41(6) – Relevant <b>information available and accessible</b></p>	<ul style="list-style-type: none"> <li>• Report will be submitted to the DEFF using the DEFF online portal.</li> <li>• Report will be submitted to Organs of State and commenting authorities via an agreed electronic platform (such as on CD, Flash stick or via a secure digital link).</li> </ul> <p><b><u>Availability of report via means described above.</u></b></p> <p><b><u>Submission of comments to EAP:</u></b></p> <ul style="list-style-type: none"> <li>• Comments will be able to be submitted directly to the EAP using the SIVEST <a href="mailto:sivest_ppp@sivest.co.za">sivest_ppp@sivest.co.za</a> or cell phone via call, SMS or WhatsApp.</li> <li>• Written comments can also be submitted via email, post or fax.</li> <li>• This is deemed to be sufficient as all I&amp;APs have either access to email or cellphone.</li> </ul> <p>Any comments provided telephonically or via instant message will be transcribed and recorded as formal comments.</p> <p>Provision of project information and consultation via various means including:</p> <ul style="list-style-type: none"> <li>• Telephonic consultation.</li> <li>• Email correspondence.</li> <li>• SMS and/or WhatsApp.</li> <li>• The Dedicated data free portal platform will ensure that I&amp;APs are afforded sufficient opportunity to participate in the project and raise comments on the project with interest in the BA process for the project. This online stakeholder engagement platform which will include the following: <ul style="list-style-type: none"> <li>○ Background information on the project</li> <li>○ Project maps (including locality map, layout map, sensitivity map, landowner map, etc.)</li> <li>○ Photos of the project site and surrounds</li> <li>○ Presentation providing a summary of the project details and the findings of the BA</li> <li>○ Posters providing a summary of the findings of the BA</li> <li>○ A means of submitting written comment or queries.</li> </ul> </li> <li>• Virtual meetings if required will be conducted using an appropriate platform agreeable to all parties (such as Zoom, Skype or Microsoft Teams). The meeting will be recorded, and the attendees' details captured in an attendance register. Confirmation of their attendance will also be requested by e-mail and the correspondence will be included in the report.</li> </ul> <p><b><i>It should be noted that the use of postage will only be required should and I&amp;AP request that the documents be sent to them via CD or flash drive. All I&amp;APs and OoS have either email / sms and will be</i></b></p>	<p>None, in line with current NEMA EIA Regulations regarding PPP</p>

Regulation/ circular	Approach & Methodology to meet requirements	Special requests
	<i>sent an electronic link to the website where the report can be reviewed or downloaded, as well as a data free portal where the report can be reviewed. Should any I&amp;APs / stakeholders / Oos request documents via post or courier, this will be indicated and proof of postage will be provided in the final report. In addition, the project database in the final report will reflect whether any I&amp;AP / stakeholder / OoS / Authority received the documents via post or courier.</i>	
Regulation 41(2)(a) – <b>Site notice</b>	<ul style="list-style-type: none"> <li>• Placement of site notices in English and Afrikaans (as per regulations) along the entrance road to the application site (30° 21' 44.5"S; 019° 34' 40.3"E), as well as at the Helios Substation (30° 30' 6.82"S; 19° 33' 25.49"E). To be placed in December 2020 (proof to be included in BA Report).</li> <li>• Size and content will be in accordance with Regulation 41(3) &amp; 41(4).</li> <li>• Proof will be incorporated into the DBAR</li> </ul>	None, in line with current NEMA EIA Regulations regarding PPP
Regulation 41(2)(b) – <b>Written notification</b> to affected and neighbouring landowners and occupiers; municipality; ward councilors; Organs of State & other parties required by the CA	<ul style="list-style-type: none"> <li>• Notification letters to all I&amp;APs (<b>Appendix 1</b>) and OoS (<b>Appendix 2</b>) will be sent via email and SMS.</li> <li>• Proof of notifications will be incorporated into the DBAR</li> </ul>	None, in line with current NEMA EIA Regulations regarding PPP
Regulation 41(2)(c) – (e) – <b>Advertisements</b>	<ul style="list-style-type: none"> <li>• Public notification of the BA process will be advertised in a local newspaper (namely Die Noordwester on 6 November 2020, as required according to Regulation 41 (2) (c) of the Environmental Impact Assessment (EIA) Regulations (2014), as amended.</li> </ul>	None, in line with current NEMA EIA Regulations regarding PPP
Regulation 42 – <b>Project database</b>	<ul style="list-style-type: none"> <li>• I&amp;APs have been identified through a process of networking and referral, obtaining information from the SiVEST existing stakeholder database, liaison with potentially affected parties in the greater surrounding area.</li> <li>• Organs of State, key stakeholders and affected and surrounding landowners have been identified and registered on the project database.</li> <li>• Other stakeholders will be required to formally register their interest in the project through either directly contacting the SiVEST Public Participation team via phone, email or fax or use of the SiVEST website.</li> <li>• In order to access the Data Free Portal platform for a specific project, I&amp;APs will be required to provide their details such that they are automatically registered on the project database.</li> <li>• The register of I&amp;APs will contain the names of: <ul style="list-style-type: none"> <li>○ all persons who requested to be registered on the database in writing and disclosed their interest in the project;</li> <li>○ all Organs of State which hold jurisdiction in respect of the activity to which the application relates; and</li> <li>○ all persons who submitted written comments or attended virtual meetings and viewed</li> </ul> </li> </ul>	None, in line with current NEMA EIA Regulations regarding PPP

Regulation/ circular	Approach & Methodology to meet requirements	Special requests
	<p>virtual presentations on the SiVEST website during the public participation process.</p> <ul style="list-style-type: none"> <li>The information captured on the project database will contain the names, organisation and contact details, as required.</li> </ul> <p><b>All I&amp;APs should have access to either email or a cellphone.</b></p>	
Regulation 44 – <b>Comments</b> to be recorded	<ul style="list-style-type: none"> <li>Comments will be able to be submitted directly to the EAP using the SiVEST sivist_ppp@sivist.co.za email address or cell phone via call, SMS or WhatsApp.</li> <li>Written comments can also be submitted via calls, SMS, WhatsApp, email, post or fax.</li> <li>Any comments provided telephonically or via instant message will be transcribed and recorded as formal comments.</li> <li>I&amp;APs without the applicable electronic facilities to access the SiVEST website will be provided with the opportunity to submit their comments and communicate with the public participation team via SMS, WhatsApp or by sending a Please-call-me notification. These comments will be transcribed and recorded as formal comments.</li> <li>All comments received throughout the EIA process will be acknowledged and captured in the comments and responses report (C&amp;RR) with a relevant response.</li> <li>The C&amp;RR will be included in the final report submitted to the CA.</li> </ul>	None, in line with current NEMA EIA Regulations regarding PPP
Regulation 4(2) – Notification of <b>decision</b> on application	<p><b>Notification of Environmental Authorisation (EA) using the following means:</b></p> <ul style="list-style-type: none"> <li>Notification letter with details as outlined in the EA issued will be sent via email and SMS (same method used during public consultation described above).</li> <li>Notification will be available on the project website, as well as the Data Free Portal.</li> </ul>	None, in line with current NEMA EIA Regulations regarding PPP

### 4.3 PUBLIC PARTICIPATION WAY FORWARD

We thank the DEFF for their input to this process to date. We kindly request confirmation that a 30-day public comment period would suffice, based on Chapter 6 of the EIA Regulations, 2014 (as amended). Based on the assumption that this would be supported, the plan going forward is as follows:

#### **Release of Draft BA Report for public comment:**

- The Draft BA Report for the proposed development will be released for public review and comment for a period of 30 days (excluding public holidays) from **08 January 2021 to 08 February 2021**.
- The report will be uploaded on to the SiVEST Website at <http://enviroenergy.sivest.co.za/download/16606BA> (the link to this portal will be on the main website whereby all registered I&APs can download the document at no cost).

#### **Notification of I&APs, landowners and OoS / authorities:**

- All affected landowners, the relevant provincial authority (namely the Northern Cape Department of Environment and Nature Conservation – NC DENC) and I&APs will be notified of the BA process.
- All landowners (affected and surrounding) and I&APs will be notified of the submission of the Draft BA Report and the 30-day public review and comment period accordingly.
- In addition, all Organs of State (OoS) / authorities will be sent electronic copies of the Draft BA Report.
- The 30-day review and comment period will be provided for both the public and for OoS / authorities, as required by the EIA Regulations (2014), as amended.
- All I&APs will be notified via Email and SMS, which is deemed suitable considering that contact details are available (i.e. a cellphone number confirms access to a cellphone).

#### **Comments and Response Report (C&RR):**

Comments received on the Draft BA Report will be included in the Final BA Report, which will be submitted to the DEFF for decision making at a later stage (within the timeframes as stipulated in the EIA Regulations, 2014, as amended). A full C&RR will also be drafted to capture all comments received during the BA process, including responses thereto. The C&RR will be included in the Final BA Report.

The public participation process will come to a close for the BA process when the decision on the BA is received and is made available to the public. All registered I&APs / stakeholders will be notified of the EA (should this be granted) and appeal process accordingly<sup>4</sup>.

## 5 CONCLUSION

The Public Participation Plan, as set out above, has been drafted for the BA process for the to ensure that reasonable opportunity is provided to I&APs / stakeholders and that all administrative actions are reasonable. Proof of all correspondence and notifications will be included in the public participation appendix included in the BA Report(s).

The Public Participation Plan is submitted to the DEFF, for discussion and agreement before the Public Participation Process is undertaken for the proposed amendment process.

---

<sup>4</sup> Section 43(1) of the National Environmental Management Act, 1998 (Act No. 107 of 1998) (NEMA)

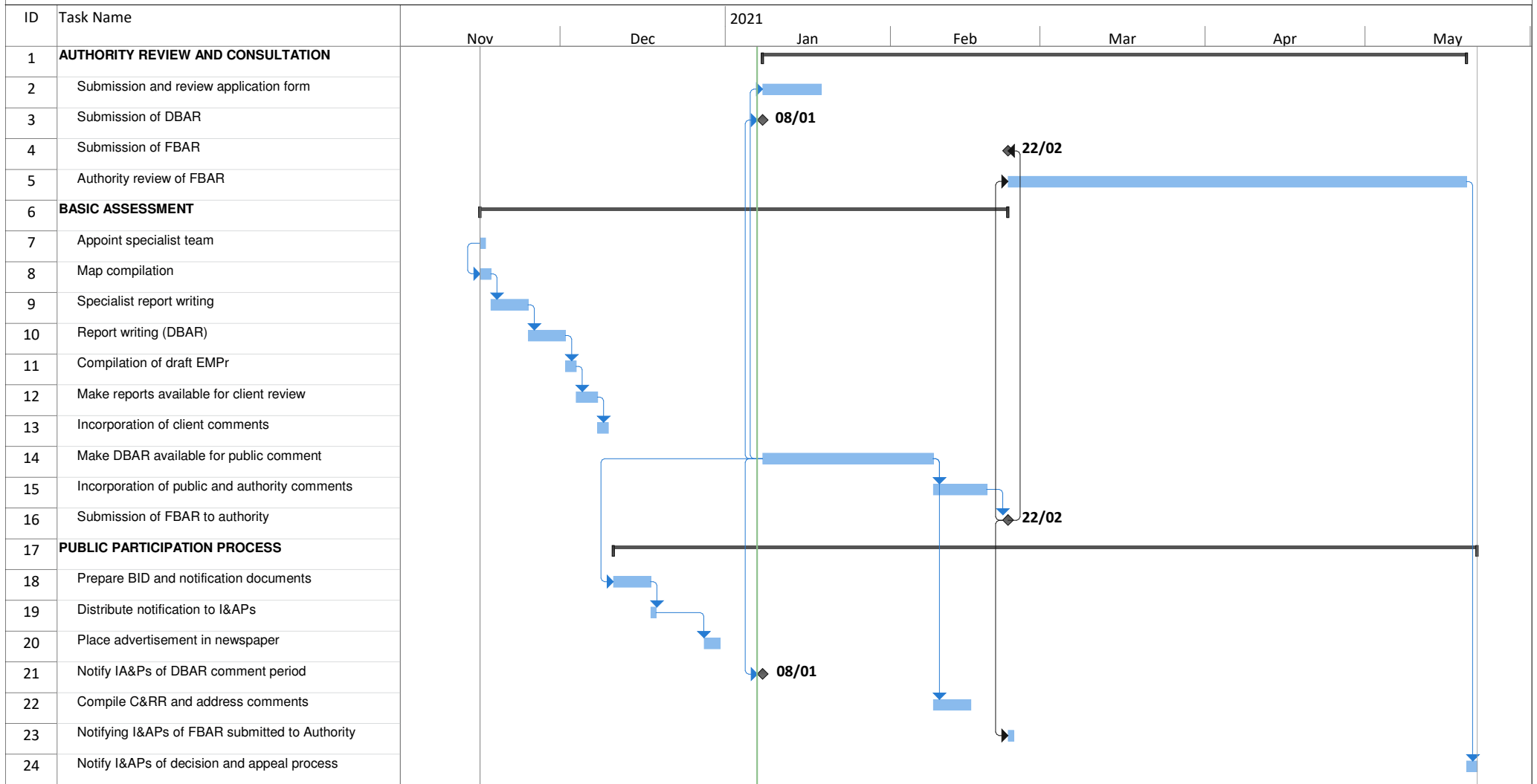


## 6 SCHEDULE

The public participation process will commence in January 2021. The Draft BA Report will be made available **from 08 January 2021 to 08 February 2021**.

The project schedule is presented below:

# PROGRAMME TO UNDERTAKE BASIC ASSESSMENT FOR GRID CONNECTION



Client: Mainstream Renewable Power Project: BA for Grid Connection Date: Thu 07/01/21	Task		External Tasks		Manual Task		Finish-only	
	Split		External Milestone		Duration-only		Deadline	
	Milestone		Inactive Task		Manual Summary Rollup		Progress	
	Summary		Inactive Milestone		Manual Summary		Manual Progress	
	Project Summary		Inactive Summary		Start-only			

# Appendix 1

## I&AP Database

PROPOSED CONSTRUCTION OF 132 KV POWERLINES BETWEEN THE AUTHORISED LOERIESFONTEIN 3 PV SOLAR ENERGY FACILITY (12/12/20/2321/2/AM4) AND THE AUTHORISED DWARSRUG WIND ENERGY FACILITY (14/12/16/3/3/2/690/AM4), AND FROM THE DWARSRUG WIND ENERGY FACILITY TO THE AUTHORISED NAROSIES SUBSTATION (12/12/20/2049/3), LOCATED NEAR LOERIESFONTEIN IN THE HANTAM LOCAL MUNICIPALITY, NAMAKWA DISTRICT IN THE NORTHERN CAPE PROVINCE OF SOUTH AFRICA.									
BASIC ASSESSMENT (BA) I&AP Database									
December 2020									
First Name	Last Name	Company	Department	Phone 1	Phone 2	Phone 3	Email Address	Method of Communication	
								Email	SMS
		Paarden Investments CC				082 333 7996			√
		Schabort Trust IT779/2000				082 552 8776	jschabort@gmail.com	√	√
	...					081 055 0169			√
	..					071 695 8718			√
	...					071 9301117			√
	....					071 353 0451			√
	.....					078 073 8454			√
	.....					078 542 1656			√
Nicole	Abrahams	SANRAL		021 957 4602	021 910 1966	062 215 8945	AbrahamsN@nra.co.za	√	√
Mia	Ackerman	Digby Wells Environmental		011 789 9495	011 789 9498	082 864 7342	mia@digbywells.com	√	√
Amelia	Agielse					078 271 1343			√
Carolyn	Ah Shene-Verdoorn	Birdlife South Africa		011 789 1122	011 789 5188	082 776 8333	advocacy@birdlife.org.za	√	√
Kevin	Anderson	Orlight SA (Pty) Ltd					kevinanderson004@gmail.com	√	
Tania	Anderson	WESSA: Northern Cape		053 839 2713	053 842 1433	082-788-0961	spothil@gmail.com	√	√
Jeanetta	Andrews					074 798 8750			√
Jacob	Andrews					078 784 6090			√
Willem	Auret	Namakwa District Municipality	Environmental Health	027 712 8000	027 712 8040		willema@namakwa-dm.gov.za	√	
Paul	Avenant	Department of Agriculture, Forestry & Fisheries		012 319 7548	012 329 5938		paula@daff.gov.za	√	
Quentin	Aylward	Cell C					QAylward@cellc.co.za	√	
Sibongile	Bambisa	Digby Wells Environmental		011 789 9495	011 789 9498		sibongile@digbywells.com	√	
M	Bartlett	Northern Cape Department of Agriculture, Land Reform and Rural Development		053 839 1702	053 839 2781				
W	Basson					071 872 7019		√	√
Ansie	Basson					078 401 7501		√	√
A	Basson			027 662 1461					
Jasmine	Basson					078 914 2649		√	√
Alicia	Basson					078 810 6330		√	√
John	Basson								
Braam	Bergh	Hantam Plaaslike Munisipaliteit		027 341 8515	027 341 8501	083 627 6445	admin1@hantam.gov.za	√	√
Grant	Beringer	Digby Wells Environmental		011 789 9495	011 789 9498		grant@digbywells.com	√	
Gert	Bessies	Siyathemba Local Municipality		053 353 5300	053 353 1386		mmsec@siyathemba.gov.za	√	
Marie	Beukes					078 266 7776			√

Clayton	Beukes			027 662 8607		073 733 0030			√
Jacoba	Beukes					073 772 2818			√
Kroesa	Beukes								
AJ	Beukes								
Ronnie	Beukes			027 662 1236	027 662 1107	073 738 4014	mjrionnie4@gmail.com	√	√
Hendrina	Beukes					073 667 1917			√
Petrus	Beukes					073 667 1917			√
Christelle	Beukes					078 545 0534			√
Lorencia	Beukes					079 951 2778			√
Anouska	Beukes					073 943 9537			√
Wayne	Beukes					082 302 4755			√
Antonio	Beukes					076 379 2985			√
Nigel	Beukes					078 090 1648			√
Whitney	Beukes					078 158 2017			√
Willem	Beukes					073 117 8291			√
Rebia	Beukes					078 414 1413			√
Sarita	Beukes					084 342 2456			√
Anna	Beukes								
Sue-Lynn	Beukes					071 951 2029			√
Catherina	Beukes					078 333 0934			√
K	Beukes					072 864 8733			√
Carien	Beukes	Inwoner				063-064-1531			√
Martha	Beukes	Inwoner				063-063-7430			√
R	Bewkes	Inwona loeriesfontein				073 385 0384			√
Jonathan	Booth	Birdlife South Africa, Biodiversity Conservation		011 789 1122	011 789 5188		advocacy@birdlife.org.za	√	
Corne	Botha	MTN Telecoms				083-212-4801	bothacf@mtn.co.za	√	√
Rudolph	Botha	Rona Rupert Trust					rudolph.f.botha@gmail.com	√	√
Floom	Brand			027-662-1131		082-324-6464			√
Ron	Bruiners	Telkom SA (Ltd)		021 414 5613			bruinecr@telkom.co.za	√	
Thoko	Buthelezi	Dept of Agriculture, Forestry & Fisheries	Directorate Land Use and Soil Management	012 319 7634			ThokoB@daff.gov.za	√	
Thoko	Buthelezi	Dept of Agriculture, Forestry & Fisheries	Directorate Land Use and Soil Management	012 319 7634	012 329 5938		ThokoB@daff.gov.za	√	
Nonka	Byker	Master Q	Socio-economic	012 667 5325	086 612 8122	082 940 3694	nbyker@rsrisksolutions.com	√	√
Nadia	Chastoor	Transnet Freight Rail	Iron Ore Line	022 703 2530	022 703 3612		Nadia.Chastoor@transnet.net	√	
Lombard	Christoffel	KAMAS REM 211		027-662-1590		072-649-2224			√
JAB	Cilliers	Zonop A 532 (Landowner)				082 257 1920			√
Aubrey	Classen	Hantam LM		027-341-8501		072-413-3021	claassenaubrey@gmail.com	√	√
Sonica	Cloete					074 413 4604			√
Wilhemina	Cloete					078 031 4207			√
Shaun	Cloete	Department of Water and Sanitation	Water Quality Management - Lower Orange Water Management Area	054 338 5800	054 334 0205	083 633 3642	cloetes@dws.gov.za	√	√

Cobus	Cloete	Transnet Freight Rail		053 838 3227		083 284 6199	cobus.cloete@transnet.net	√	√
Koos	Coetzee					071 920 9864			√
John	Coetzee	Eskom: Distribution (Loeriesfontein)	Northern Cape Operating Unit			072 965 1305	johnc@eskom.co.za	√	√
Attie	Coetzee	Transnet		011 308 2275	022 703 3521		Attie.Coetzee@transnet.net	√	
Johan	Crous	Namakwa District Municipality		027 341 8102	027 341 8139	082 920 7940	johnc@namakwa-dm.gov.za	√	√
Christians	Dallas					072 833 5525			√
Graema	Daly	Transnet					Graeme.Daly@transnet.net	√	
Ralph	Damonse	Mainstream				082 344 5911	ralph.damonse@mainstreamrp.com	√	√
Nico	de Goede	Transnet Freight Rail	Iron Ore Line	022 703 2530	022 703 3612		nico.degoede@transnet.net	√	
Marike	De Klerk	Digby Wells Environmental		011 789 9495	011 789 9498		marike@digbywells.com	√	
Rene	De Kock	SANRAL: Western Region		021 957 4607	021 946 1630				
Hendrika	De Luee					073 913 2757			√
Coenraad & Magda	Deysel	Landowner (Ausker's Dale) 799				082 491 2932	coenraaddeysel@gmail.com	√	√
Brian	Dreyer	Neotel					Brian.Dreyer@neotel.co.za	√	
Jan	Du Plessis	Coetzee Melkboerdery		027 341 8500	027 341 8501	083 662 2380			√
Sibayi	Dumisani	SAHRA: Northern Cape		053 831 2537	053 833 1435	083 456 9673	dsibayi@sahra.org.za	√	√
Frank	Eager	Orlight SA (Pty) Ltd					aviv@bsg-investments.com	√	
Wolf	Edmeyer	Deelfontein 127 (Landowner)				082 441 0656	wolf.edmayr@mweb.co.za	√	√
Joshua	Engelbrecht	Cell C					Joshua.Engelbrecht@cellc.co.za	√	
Gideon	Engelbrecht	Hantam Local Municipality		027 341 1416					
Margaret	Esau	Hantam Local Municipality		027 341 8020					
E	Fallet			027 341 1762		078 983 4921	efallet@yahoo.com	√	√
Kolie	Farmer			027 662 1163	027 662 1348	083 728 7889	kolieformer44@gmail.com	√	√
Patrick	Farmer	Hantam Local Municipality		027 662 8600	027 662 8604	083-627-7307		√	√
Sam	Fiff	Transnet Freight Rail (Jhb)		051 408 2565	051 408 4487		Francis.Rahlapane@transnet.net	√	
Chris	Fortuin	Namakwa District Municipality	Economic Development & Tourism	027 712 8070	027 712 8040	082 901 8539	chris@namakwa-dm.gov.za	√	√
Nico	Fourie	Department of Roads & Public Works: Northern Cape Province		053 839 2260			ngc@mtnloaded.co.za	√	
Jonathan	Frick	E.ON Energy Southern Africa (Pty) Ltd		010-005-2016		826912186	jonathan.frick@eon.com	√	√
Abre	Fritz	Hantam Plaaslike Munisipaliteit		027 341 8500	027 341 8501	078 148 1910	mayor@hantam.gov.za	√	√
Veronique	Fyfe	G7 Energies					eia@g7energies.com	√	
Mariagrazia	Galimberti	SAHRA: Head Office		021 462 4502	021 462 4509		mgalimberti@sahra.org.za	√	
Aviv	Gartin	Orlight SA (Pty) Ltd					aviv@bsg-investments.com	√	
John	Geeringh	Eskom Environmental					GeerinJH@eskom.co.za	√	
John	Geeringh	Eskom: Transmission	GC Land Development	011 516 7233	086 661 4064	083-632-7663	GeerinJH@eskom.co.za	√	√
Carel	Gersbach	Air Traffic & Navigation Services (ATNS)		011 607 1000	011 961 0418	082-553-3836	carolmp@atns.co.za	√	√
Bradley	Gibbons	EWT: African Crane Conservation Programme		049 842 1116	049 842 1116	082-566-5803	bradleyg@ewt.org.za	√	√
Denize	Gouws					076 555 6279			√
Jakkie	Gouws	Inwoner				078-203-2475			√
Gaffie	Greeff			027 662 1175		082 042 5006			√
Walter	Gresse	Transnet Rail Freight (Iron Ore Line)		021 940 2711			walter.gresse@transnet.net	√	
Dudu	Hadebe	Eskom: Distribution					HadebDP@eskom.co.za	√	
Johannes	Hanekom	Transnet Property					Johannes.Hanekom@transnet.net	√	

Annelize	Harmse	Transnet Freight Rail					Annelize.Harmse@transnet.net	√	
Simconesca	Hartnick					083-289-5094			√
Michelle	Hartslief	South African Weather Service					Michelle.Hartslief@weathersa.co.za	√	
Howard	Hawke	ATNS					howardh@atns.co.za	√	
Ambrose	Hector	Eskom		021 980 3064		084-574-9231	HectorA@eskom.co.za	√	√
	Henorik					082 397 0382			√
Danita	Hohne	Dept of Water Affairs (Upington)		054 338 5881	054 334 0205		hohneD@dwa.gov.za	√	
Marianne	Husselmann	Plaas: Kaalspruit		027 662 1065	027 662 1143	083 639 9841	marianne.husselmann@gmail.com	√	√
Francis	Jackson	Windlab Developments South Africa (Pty) Ltd		087 802 5999	0800 981 222	071 689 5442	francis.jackson@windlab.com	√	√
Charl	Jooste	Solar Capital					charl@solarcapital.co.za	√	√
Charl	Jooste	Solar Capital		021 433 0366		082 882 7170	Charl@solarcapital.co.za	√	√
Andrew	Julyan	Transnet Freight Rail	Iron Ore Line	022 703 2530	022 703 3612		andrew.julyan@transnet.net	√	√
Mafube Local Municipality	Kassie	Dorp Frankfort 74 (Landowner)	Mafube Local Municipality			072 271 9904			√
Hendrik	Kearney	Farm: Kaalspruit Grews		027 662 1300	086 115 184	082 566 4322	hendrik Kearney@gmail.com	√	√
Mere	Kgampe	Department of Science and Technology		012 843 6644		076 488 4776	Mere.Kgampe@dst.gov.za	√	√
AJ	Kirsten	Leeuwklip 164				084 500 2999	cvv@lantic.net	√	√
Elizabeth	Klaaste					073 378 5613			√
Andreas	Klaaste					078 659 8095			√
Raggel	Klaaste								
Jacques	Klaaste			027 662 1029		078 639 8095			√
Johan	Koegelberg	Sentech					KoegelenbergJ@sentech.co.za	√	
Johan	Koegelenberg	SENTECH	Renewable Projects	011 471 4634		079-267-8920	KoegelenbergJ@sentech.co.za	√	√
Julius	Koen	Dept of Environment & Nature Conservation		053 807 7481	053 831 3530	082 458 3129	jkoen@ncpg.gov.za	√	√
Chris	Koopman	Namakwa District Municipality		027 712 8000		083 627 8092	info@namakwa-dm.gov.za	√	√
Paultrion	Kriel					073 534 5772		√	√
Henk	Landman	Eskom: Distribution	North Western Region Operating Unit	021 980 3412			LandmaHJ@eskom.co.za	√	
Andries	Landman	Plaas: Sous	Rona Rupert Trust	021 762 4558	086 617 4658		aj.landman@gmail.com	√	
Jenna	Lavin	SAHRA		021 462 4502	021 462 4509		jlavin@sahra.org.za	√	
Magda	Le Roux	Eskom: Distribution	North Western Region Operating Unit	021 980 3215			LRouxMM@eskom.co.za	√	
Hercule	Le Roux	MTN Telecoms				083-209-1860	hlr@mtn.co.za	√	√
Kevin	Leask	Eskom		011 800 5994		072 868 9209	kevin.leask@eskom.co.za	√	√
Brave	Leballo	Transnet					Brave.Leballo@transnet.net	√	
Brave	Leballo	Transnet Freight Rail		011 773 8881		083 414 4309	Brave.Leballo@transnet.net	√	√
Tsholo	Leburu	Northern Cape Provincial Department		053 807 7456	053 831 3530		tmakaudi@ncpg.gov.za	√	
Eddie	Lennox	Eskom Transmission Limited					LennoxEC@eskom.co.za	√	
Braam	Lintvelt	Plaas: Aan de Karee Doornpan	Albert Lintvelt Familie Trust	081-776-5825		073-094-1430	braamnew@gmail.com	√	√
Sakkie	Lintvelt	Plaas: Aan de Karee Doornpan	Albert Lintvelt Familie Trust		023 316 1498	082 772 0860	uap@isat.co.za	√	√
Riana	Lock	Hantam Plaaslike Munisipaliteit		027 341 8500	027 341 8501	083 714 2632	admin2@hantam.gov.za	√	√
A	Lombard					073 075 4080			√
Renay	Lombard					071 324 3833			√
Marlyn	Lombard					073 604 4192			√

Willie	Lombard			027 662 1439					
Gert	Lombard	BITTER K'MAS REM 209		027 341 1077	027-341-2439	071-332-2370			√
Frans	Lombard	Plaas: Karree Doorn 214, Ptn 1		027 662 9880		082-331-3870			√
Gert Johannes	Lombard	Plaas: Karree Doorn 214, Ptn 1		027 662 9880	082-331-3870	082-660-8720	Frans.lombard@apgonline.co.za	√	√
CJ	Loubse	Telkom Telecoms					LoubseCJ@telkom.co.za	√	
Jannie	Loubser	Namakwa District Municipality		027 712 8000	027 712 8040		pims@namakwa-dm.gov.za	√	
Jannie	Loubser	Namakwa District Municipality		027 712 8000		083-252-3136	janniel@namakwa-dm.gov.za	√	√
Nico	Louw	Portion 2 of the Farm Gras Koppies No. 176		027 662 1449		082-774-7315	lounic@vodamail.co.za	√	√
Nel	Louw	Remainder of Farm Brak Pan 21: Contact: Alwyn Müller		027 662 1074			alwyn@louwenmuller.co.za	√	
Kate	MacEwan	South African Bat Assessment Association				079-175-1758	kate@iws-sa.co.za	√	√
Stephanus	Majiedt			027 662 1097		078 074 9811		√	√
Kentridge	Makhanya	Eskom Transmission Limited		011 800 2706	086 662 2236	082 879 9133	MakhanKK@eskom.co.za	√	√
Jacoline	Mans	Department of Agriculture, Forestry & Fisheries		054 338 5910	054 334 0030	082-808-2737	jacolinema@daff.gov.za	√	√
Charmaine	Manus					078 468 3471			√
Josia	Manyakoana	ATNS					josiam@atns.co.za	√	
Willie	Maritz	Transnet Freight Rail		053 838 2050	053 838 2048		willie.maritz@transnet.net	√	
Mashudu	Marubini	DAFF Provincial Department		012 319 7619			MashuduMa@daff.gov.za	√	
Simphiwe	Masilela	Air Traffic Navigation Services		011-607-1228	011-607-1570		ObstacleEvaluators@atns.co.za	√	
M	Masuana					072 783 8512			√
Vincent	Matabane	Transnet		011 584 0551	011 773 4511	083 297 7626	vincent.matabane@transnet.net	√	√
A A	Mayiedt					083 570 3266			√
Dylan	McLeod	Transnet Freight Rail		538383227		083-414-4316	dylan.mcleod@transnet.net	√	√
Rochelle	McPherson	Eskom Wayleave		021 980-3042	086-661-8762	0866618762	rochelle.mcpherson@eskom.co.za	√	√
Christopher	Mduduzi	Dept of Water Affairs (Upington)					cebekhulum@dwa.gov.za	√	
Brian W	Meyer				027 662 1101	083 652 9633	bwm.meyer@gmail.com	√	√
Brian	Meyer	Hantam Plaaslike Munisipaliteit		027 341 8500	027 341 8501	083 652 9633	infrastructure1@hantam.gov.za	√	√
Khethelo	Mhlanga	Transnet Freight Rail					Khethelo.Mhlanga@transnet.net	√	
Sunay	Mol	Landowner on the Remainder of the Farm Narosies No. 228				084-515-5047	sunaymol@hotmail.com	√	√
Sunay	Mol	Plaas: Narosies		021 906 0162		084 515 5047	sunaymol@hotmail.com	√	√
Johanna	Morobane	Air Traffic Navigation Services	Corporate Sustainability and Environment	011 607 1143	011 607 1570		JohannaM@atns.co.za	√	
Lungile	Motsisi	Eskom Transmission Limited					MotsisL@eskom.co.za	√	
Roslin	Mouton					078 588 9724			√
Ruben	Muller					084 828 7258			√
Alwyn	Muller	Hentie van der Westhuizen Familie Trust (Access Road Landowner)		027 662 1074 / 65	027 6621 143		alwyn@louwenmuller.co.za	√	
Alwyn	Muller	Louw & Muller Prokureurs		027 6621 074 / 65	027 6621 143		alwyn@louwenmuller.co.za	√	
Alwyn	Muller	Louw & Muller Prokureurs		027 6621 074 / 65	027 6621 143		alwyn@louwenmuller.co.za	√	
John	Muller	Slabberts 1397 (Landowner)				082 787 7573	jdnuller@telkomfr.net	√	√
Kevin	Mutheiwana	Department of Mineral Resources		053 807 1707			Mmboneni.Mutheiwana@dmr.gov.za	√	
JJ	Mutyorauta	Northern Cape Province		053 807 7430	053 831 3530		AbrahamsA@dwa.gov.za	√	

Godfrey	Naou								
Jako	Naude	Leeuwpan 1242 (Landowner)				083 717 1169	potsdam@windfield.co.za	√	√
Ono	Naude	Vodacom					ono.naude@vodacom.co.za and	√	
Kwanele	Ndlovu	ATNS		011 607 1230	011 607 1570		KwaneleN@atns.co.za	√	
Onwabile	Ndzumo	NC Dept of Environment and Nature Conservation					onyndzumo@gmail.com	√	
Cosetta	Nel					071 778 8940			√
Leow	Nel					073 821 6186			√
A	Nel			081 055 0169					
Alber	Nel			027 662 9833		082 570 3712	albernel7@gmail.com	√	√
Raylene	Nel	Dept of Environment & Nature Conservation		053 807 7335		082 696 6007	rnel@ncpg.gov.za	√	√
Elias Albertus	Nel	Elizabeth Maria Nel (Access Road Landowner)		012 993 1353		082 803 5419	elias.a.nel@gmail.com	√	√
Charlene	Nel	Inwoner		027-662-1386	027-662-1386	081-440-4234	charlene.nel@telkomsa.net	√	√
Aubrey	Nel	Inwoner		027-662-1386	027-662-1386	081-794-4939	aubrey.nel@telkomsa.net	√	√
Percy	Ngidi	Eco-compliance Pty Ltd			086 609 8823	082 802 3728	Percy@ecocompliance.co.za	√	√
	Ngwathe Local Municipality	Rietfontein 156 (Landowner)		056-816-2700					
Sibusiso	Nkabinde	ATNS		015 288 0342	015 288 0344				
Marianna	Okhuis	Okhuis Construction and Renovation	C.P.A Wykskomitee	027 662 1439		071 743 2271			√
Nicolaas	Oosthuizen	Lubbe 163 (Landowner)				082 970 9797	danielle01@vodamile.co.za	√	√
JJ	Operman			027 662 1399	027 662 1029	079 287 3320	oppermanboetie@yahoo.com	√	√
Keith	Opperman					073 301 4089			√
Gizella	Opperman	Hantam Local Municipality			027 662 1029	079-325-2224	oppermangizella@yahoo.com	√	√
Bramwell	Ortell	Transnet Freight Rail	Iron Ore Line	022 703 2530	022 703 3612	083 304 0147	Bramwell.Ortell@transnet.net	√	√
Bramwell	Ortell	Transnet Freight Rail	Iron Ore Line	022 703 2530	022 703 3612	083 304 0147	Bramwell.Ortell@transnet.net	√	√
Elbrecht	Oswald	Nordex				084 663 2043	EOswald@nordex-online.com	√	√
	Peterden Investments CC	Goedgedacht 44	Peterden Investments CC			082 333 7996			√
Anel	Pieterse					073 444 8131			√
Danie	Pieterse	Namakwa District Municipality		027 341 8125	027 341 8128	082 940 3024	daniep@namakwa-dm.gov.za	√	√
Andries	Pietersen					073 115 0790			√
	Postdam Landgoed Trust	Potsdam 70 (Landowner)				083 717 1169	potsdam@windfield.co.za	√	√
Jan	Prins					073 587 7765			√
Samantha	Ralston-Paton	BirdLife South Africa	Birds and Renewable Energy			083-673-3948	energy@birdlife.org.za	√	√
Nish	Rathanlall	Eskom: Distribution					RathanN@eskom.co.za	√	
Ntsundeni	Ravhogoni	Department of Mineral Resources (DMR)		053 807 1700	053 830 0827		Ntsundeni.Ravhogoni@dmr.gov.za	√	
Hein	Reid	ATNS					heinr@atns.co.za	√	
Jivan	Rooyen					071 341 9196			√
Maritza	Rossouw	Eskom					RossouMt@eskom.co.za	√	
Rona	Rubert	Farm: Tierhoek				082 341 2807	francois@tierhoek.co.za	√	√
Jacobus	Ryck					073 937 9263			√
Jessica`	Ryk					074 304 5219			√
M	Sass					078 199 6319			√
Monica	Scheepers					073 511 0614			√
Paul and Coba	Scheepers								√
Hennie	Schoeman	Transnet Freight Rail		053 838 3039	053 838 3211		hennie.schoeman@transnet.net	√	



Carlo	Schrader	Dept of Water Affairs (Bloemfontein)					schraderc@dwa.gov.za	√	
Catharina	Scott	Langbank 1165 (Landowner)				082 859 7763	phoebef@vodamile.co.za	√	√
Warren	Segels					076 445 4422			√
Getruida	September					074 783 0018			√
Leonard	Shaw	Open Serve (Telkom)	Wireless Planning Development & Support	012 311 2012	012 311 1686	081-428-6729	LeonardS@openseve.co.za	√	√
Leonard	Shaw	Telkom Telecoms					ShawLS@telkom.co.za	√	
M	Sister					071 965 8718			√
Riaan	Smit	Eskom: Distribution	North Western Region Operating Unit	021 980 3452			SmitR@eskom.co.za	√	
Immanuel	Smith	Namakwa District Municipality	Projects	027 712 8000	027 712 8040		immanuels@namakwa-dm.gov.za	√	
Louis	Snyders	Department of Water Affairs					snydersl@dwa.gov.za	√	
Milicent	Solomons	DEA	Biodiversity & Conservation	012 395 1852			MSolomons@environment.gov.za	√	
Teresa	Sou					074 433 1018			√
Angeline	Souw					073 124 6843			√
Janine	Souw					084 991 0407			√
Candice	Spammer	Telkom Wayleave		021-414-5582		021 414 5707	spammec1@telkom.co.za	√	√
Marie	Spanneberg					074 783 0018			√
Jan	Steenkamp					073 683 4057			√
Zitrom	Steenkamp					073 077 5903			√
Gert	Steenkamp	DAFF: Regional Northern Cape		027 341 1238		083-260-5269	gsteenkamp@ncpg.gov.za	√	√
Hermina	Steenkamp	Hantam Plaaslike Munisipaliteit			054 603 0248	084-773-4713			√
Frik	Sterkse	Hantam Plaaslike Munisipaliteit			054 603 8401	082-651-2720	friksterkse@gmail.com	√	√
Maria	Sterksen					078 613 0389			√
Lorinsia	Strauss					078 500 3330			√
Willem	Strauss	Plaas: Bitterputs		219870911		082-377-8124	info@efencing.co.za	√	√
Lizell	Stroh	SA Civil Aviation Authority		011 545 1232	011 545 1451	083-461-6660	strohl@caa.co.za	√	√
Lizell	Stroh	SA Civil Aviation Authority		011 545 1232	011 545 1482	083 461 6660	Obstacles@caa.co.za	√	√
D	Strouss					071 379 0498			√
Francious	Strydom	SANDF					Francois.Strydom@dod.mil.za	√	√
Shaun	Swanepoel	Eskom Wayleave		021 980-3913	086-660-0941				
Elsabe	Swart	Dept of Environment and Nature conservation		053-807-7481	053-831-3530	083-548-2954	elsabe.dtec@gmail.com	√	√
Mariana	Swarts					071 947 6076			√
AJ	Swarts			027 662 1026		073 905 5045			√
John	Swarts	Hantam Local Municipality			027 341 2511	078 157 0562			√
Roger	Swartz	Hantam Local Municipality				083-661-3674			√
Jan	Swartz	Hantam Local Municipality		027 341 8500	027 341 8501	078-157-0562	municipalmanager@hantam.gov.za	√	√
Jacobus	Tarr	Protea Motors Loeriesfontein		027 662 1163	027 662 163/348	083 728 7884	Belkol@hantam.co.za	√	√
Anita	Tieties					073-499-8804			√
Andrew	Timothy	SAHRA (Northern Cape)		053 831 2537	053 838 1435	079 036 9294	ratha.timothy@gmail.com	√	√
Adrian	Tiplady	SKA		011-442-2434	011-442-2454		atiplady@ska.ac.za	√	
Adriaan	Tiplady	Square Kilometre Array		011 442 2434	011 442 2454		atiplady@ska.ac.za	√	

Sandla	Tsengiwe	Hantam LM							
Louise	Urion	Inwoner				078-661-4210			√
L	Urion	Inwoner Loeriesfontein				078 520 5337			√
Louise	Urvon					078 661 4210			√
Irene	Van de Ross					078 914 2694			√
Heleen	van den Heever	Telkom (SA) Ltd	Wayleave Management	051 401 6829	086 622 7128	081-428-1691	vdheevhd@telkom.co.za	√	√
	Van Der Merwe					073-802-0811			√
Herbert	Van der Merwe			027 662 1046					
Francois	Van der Merwe	Farm: Sous		027 341 2807		082 557 3849	francois@tierhoek.co.za	√	√
Francois	van der Merwe	Remainder of Sous 226		027 341 2807		082 557 3849	francois@tierhoek.co.za	√	√
Irene	van der Ross					073 583 6227			√
Gert	van der Walt	Vodacom					Gert.VanderWalt@vodacom.co.za	√	√
Gideon	Van der Westhuizen	Plaas: Klein Rooiberg		054 431 0458			gideon@gvdw.boz	√	√
Deon	Van der Westhuizen	Plaas: Klein Rooiberg		021 883 3312	021 886 4233	082-492-0746	deon@vdwestassoc.co.za	√	√
Magrietha	van der Westhuizen	Remainder of Farm Kleine Rooiberg 227				082 804 2374	johannjb@telkomsa.net	√	√
Josias	Van Der Westhuizen	Remainder of Farm Kleine Rooiberg 227							
Josias Johannes	van der Westhuizen	Remainder of Farm Kleine Rooiberg No. 227		041-398-1538		083-320-9561	fincash@telkomsa.net	√	√
Johanna Magrietha	van der Westhuizen	van der Westhuizen		021 556 0768		082 925 5827	heinie@multipunch.co.za	√	√
Denver	van Heerden	Dept of Environment & Nature Conservation		053 807 7306	086 625 6470		bbotes@nopg.gov.za	√	
CL	van Jaarsveld				027 662 1117	083 320 8383			√
Hentie	van Jaarsveld	Agri SA: Loeriesfontein Landbouvereniging		027 662 1011	027 662 1117	083-720-2054	saffier@hantam.co.za	√	√
C	van Niekerk	Hantam Local Municipality				072 613 1205			√
	Van Rensburg Boerdery CC	Rietkuil 810 (Landowner)				082 924 5728			√
Frederik	van Schalkwyk								
F	van Schalkwyk					073 340 6758			√
Johan	Van Schalkwyk	ATNS					johanvs@atns.co.za	√	
Helena	Van Schalkwyk	Hantam Plaaslike Munisipaliteit		027 341 2216	027 341 2216	082 797 7228			√
Noel	Van Stade	Hantam LM			027-341-8501	079-065-2928	municipalmanager@hantam.gov.za	√	√
Porchia	van Wyk					060 409 3863			√
Riaan	Van Wyk	Hantam Local Municipality		027 341 8500	027 341 8501	083-320-2116	vanwykjr@hantam.gov.za	√	√
Jacobus	van Zyl					073 958 6655			√
Hendrik	van Zyl			027 662 1277	027 662 8601	079 314 2067			√
Lillie	Van Zyl								
Anna	Van Zyl					071 913 7504			√
Magreta	Van Zyl					082 363 7568			√
Jakobus	Van Zyl					071 951 2029			√
NJ	Van Zyl	Agri SA: Loeriesfontein Landbouvereniging		027 662 1387		084-406-8990			√
Hannes	Van Zyl	Agri SA: Loeriesfontein Landbouvereniging		086 100 4637	086 608 8181	082-788-3222	hannes@solek.co.za	√	√
Are	Van Zyl	Eskom		021 915 2570			vZylAW@eskom.co.za	√	
Sophia	van Zyl	Inwoner Loeriesfontein		027 602 1277		073 544 1979			√
Callie	van Zyl	Loeriesfontein Farmers Association		027 662 9842			callie.vanzyl@gmail.com	√	
Sheldon	Vandray	Mainstream Renewable Energy				073-871-9304	sheldon.vandray@mainstreamrp.com	√	√
Paul	Venter	MTN Telecoms				083-212-2099	Paul.Venter@mtn.co.za	√	√
Nicolene	Venter	SiVEST Environmental		012 662 2843		083 377 9112	iafrica@icon.co.za	√	√

Gerhardus	Viljoen	Brakvlei West 363 (Landowner)				076-330-0060	joen@carfone.net	√	√
Noel	Viljoen	Hantam Local Municipality		027 341 8500	027 341 8501		idp@hantam.gov.za	√	
Ronelle	Visagie	EWT		053-683 7010		082-408-5356	ronelle@ewt.org.za	√	√
Johannes	Visagie	KAMAS 211 PTN 1		012-567-5383		083-650-9914			√
Jonathan	Visagie	Telkom					VisagiJA@telkom.co.za	√	
Lorinthia	Waterboer					072 384 1968			√
Catrina	Waterboer					073 432 4350			√
W	Waterboer			027 662 1036					√
Sophia	Waterboer					073 773 4034			√
Giel	Waterboer	Community Development: Youngsters				078 875 5897			√
Caroia	Watermeyer	Inwoner				078-699-1961			√
Johanna	Wilschut	Hantam Local Municipality			027 218 8701	073 163 8145			√
Melanie	Woudberg	Loeriesfontein Hotel		027 662 1001	027 662 1001	082 325 0212	info@loeriesfontein.co.za		√
Piet	Woudberg	Loeriesfontein Hotel		027 662 1001	027 662 1001	083 236 6276	info@loeriesfontein.co.za	√	
Justine	Wyngaardt	Eskom		021 980 3112			WyngaaJO@eskom.co.za	√	

## Appendix 2

### Organs of State (OoS) Database

PROPOSED CONSTRUCTION OF 132 KV POWERLINES BETWEEN THE AUTHORISED LOERIESFONTEIN 3 PV SOLAR ENERGY FACILITY (12/12/20/2321/2/AM4) AND THE AUTHORISED DWARSRUG WIND ENERGY FACILITY (14/12/16/3/3/2/690/AM4), AND FROM THE DWARSRUG WIND ENERGY FACILITY TO THE AUTHORISED NAROSIES SUBSTATION (12/12/20/2049/3), LOCATED NEAR LOERIESFONTEIN IN THE HANTAM LOCAL MUNICIPALITY, NAMAKWA DISTRICT IN THE NORTHERN CAPE PROVINCE OF SOUTH AFRICA.								
DISTRIBUTION OF THE DRAFT BASIC ASSESSMENT REPORT (DBAR) TO ORGANS OF STATE (OoS) FOR COMMENT								
TITLE	SURNAME	NAME	POSITION	POSTAL ADDRESS	EMAIL ADDRESS	METHOD OF COMMUNICATION		
						EMAIL	SMS	
<b>HANTAM LOCAL MUNICIPALITY</b>								
Mr	van Wyk	Riaan	Environmental Officer	Private Bag X14 CALVINIA 8190	<a href="mailto:socialoev1@hantam.gov.za">socialoev1@hantam.gov.za</a>	√	-	
<b>NAMAKWA DISTRICT MUNICIPALITY</b>								
Mr	Loubser	Jannie	Manager: Planning	Private Bag X20 SPRINGBOK 8240	<a href="mailto:janniel@namakwa-dm.gov.za">janniel@namakwa-dm.gov.za</a>	√	-	
<b>AGRI SA-NORTHERN CAPE</b>								
Mr	Myburg	Henning	General Manager	PO Box 1094 KIMBERLEY 8300	<a href="mailto:henning@agrink.co.za">henning@agrink.co.za</a>	√	-	
<b>ATNS</b>								
Ms	Morobane	Johanna	Manager: Corporate Sustainability and Environment	Private Bag X15 KEMPTON PARK 1620	<a href="mailto:JohannaM@atns.co.za">JohannaM@atns.co.za</a>	√	-	
Mr	Mondzinger	Graham	Obstacle Evaluator	Private Bag X15 KEMPTON PARK 1620	<a href="mailto:GrahamM@atns.co.za">GrahamM@atns.co.za</a>	√	-	
<b>BIRDLIFE SOUTH AFRICA</b>								
Mr	Booth	Jonathan	Policy Manager	PO Box 515 RANDBURG 2125	<a href="mailto:advocacy@birdlife.org.za">advocacy@birdlife.org.za</a>	√	-	
Ms	Ralston	Samantha		PO Box 515 RANDBURG 2125	<a href="mailto:energy@birdlife.org.za">energy@birdlife.org.za</a>	√	-	
<b>ENDANGERED WILDLIFE TRUST</b>								
Mr	Little	Ian	Senior Manager	Kirstenbosch National Botanical Garden Rhodes Drive Newlands CAPE TOWN	<a href="mailto:ianl@ewt.org.za">ianl@ewt.org.za</a>	√	-	
Mr	Leeuwner	Lourens	Renewable Energy Project Manager	Private Bag X11, MODDERFONTEIN 1609	<a href="mailto:lourensl@ewt.org.za">lourensl@ewt.org.za</a>	√	-	
<b>ESKOM</b>								
Mr	Geeringh	John	Chief Planner	PO Box 1091 JOHANNESBURG 2000	<a href="mailto:GeerinJH@eskom.co.za">GeerinJH@eskom.co.za</a>	√	-	
<b>DEPARTMENT OF ENVIRONMENTAL AFFAIRS BIODIVERSITY</b>								

Mr	Lekota	Seoka		Private Bag X447 PRETORIA 0001	<a href="mailto:slekota@environment.gov.za">slekota@environment.gov.za</a>	√	-
Mr	Rabothata	Mmatlala		Private Bag X447 PRETORIA 0001	<a href="mailto:slekotamrabothata@environment.gov.za">slekotamrabothata@environment.gov.za</a>	√	-
<b>DEPARTMENT OF WATER AND SANITATION</b>							
<i>Provincial Department- Northern Cape</i>							
Ms	Mokhoantle	Lerato	Environmental Officer	28 Central road Beaconsfield KIMBERLEY 8300	<a href="mailto:Mokhoantle@dws.gov.za">Mokhoantle@dws.gov.za</a>	√	-
<b>DEPARTMENT OF MINERAL RESOURCES (DMR) - NORTHERN CAPE</b>							
Mr	Swart	Pieter	Regional Manager	41 Schmidtsdrift street, Telkom Building, KIMBERLEY, 8300	<a href="mailto:pieter.swart@dmr.gov.za">pieter.swart@dmr.gov.za</a>	√	-
Ms	Mondela	Lungi	Secretary	41 Schmidtsdrift street, Telkom Building, KIMBERLEY, 8300	<a href="mailto:Lungi.Mondela@dmr.gov.za">Lungi.Mondela@dmr.gov.za</a>	√	-
<b>DEPARTMENT OF AGRICULTURE, FORESTRY AND FISHERIES</b>							
<i>National Department</i>							
Ms	Buthelezi	Thoko	AgriLand Liaison Office	Private Bag X120 PRETORIA 0001	<a href="mailto:ThokoB@daff.gov.za">ThokoB@daff.gov.za</a>	√	-
Ms	Marubini	Mashudu	Delegate of the Minister	Delpen Building Cnr Annie Botha and Union Street Office 270 PRETORIA 0001	<a href="mailto:MashuduMa@daff.gov.za">MashuduMa@daff.gov.za</a>	√	-
<i>Provincial Department- Northern Cape</i>							
Ms	Mans	Jacoline	Chief Forester	Koelenhof, 306 Schroder Street UPINGTON 8800	<a href="mailto:jacolinema@daff.gov.za">jacolinema@daff.gov.za</a>	√	-
<b>NORTHERN CAPE PROVINCIAL DEPARTMENT OF AGRICULTURE, LAND REFORM &amp; RURAL DEVELOPMENT</b>							
Ms	Bloem	Nomandla	MEC	Private Bag X5018 KIMBERLEY 8300	<a href="mailto:premier@ncpg.gov.za">premier@ncpg.gov.za</a>	√	-
Mr	Van Heeden	Denver	HOD	Private Bag X6010 KIMBERLEY 8300	<a href="mailto:dvaheeden@ncpg.gov.za">dvaheeden@ncpg.gov.za</a>	√	-
<b>NORTHERN CAPE DEPT OF ENVIRONMENT AND NATURE CONSERVATION</b>							
Mr	Fisher	Brian	Director Environmental Impact Management	Private Bag X86102 KIMBERLEY 8300	<a href="mailto:bfisher@ncpg.gov.za">bfisher@ncpg.gov.za</a>	√	-
Mr	Mthombeni	Thulani		Private Bag X86102 KIMBERLEY 8300	<a href="mailto:tmtho@webmail.co.za">tmtho@webmail.co.za</a> <a href="mailto:tmthombeni@ncpg.gov.za">tmthombeni@ncpg.gov.za</a>	√	-
<b>NORTHERN CAPE PROVINCIAL DEPT OF SPORT, ARTS &amp; CULTURE: Heritage Resources Unit</b>							
Mr	Lenyibi	Patrick	Manager: Heritage Resources	Private Bag X5004 KIMBERLEY 8300	<a href="mailto:plenyibi@ncpg.gov.za">plenyibi@ncpg.gov.za</a>	√	-
<b>NORTHERN CAPE DEPARTMENT OF ROADS AND PUBLIC WORKS</b>							
Mr	Roelofse	Jaco	Director: Planning & Design	PO Box 3132 KIMBERLEY 8300	<a href="mailto:roelofse.j@vodamail.co.za">roelofse.j@vodamail.co.za</a>	√	-

SANRAL - WESTERN REGION								
Ms	Abrahams	Nicole	Environmental Coordinator	Private Bag X19 BELLVILLE 7535	<a href="mailto:abrahamsn@nra.co.za">abrahamsn@nra.co.za</a>	√	-	
SAHRA: HEAD OFFICE								
Ms	Higgitt	Natasha	Heritage Officer: Northern Cape	PO Box 4637 CAPE TOWN 8000	<a href="mailto:nhiggitt@sahra.org.za">nhiggitt@sahra.org.za</a>	√	-	
SQUARE KILOMETRE ARRAY								
Dr	Tiplady	Adriaan	Manager: Site Categorisation	PO Box 522 SAXONWOLD 2132	<a href="mailto:atiplady@ska.ac.za">atiplady@ska.ac.za</a>	√	-	
SA CIVIL AVIATION AUTHORITY (SA CAA)								
Ms	Stroh	Lizell	Obstacle Specialist	Private Bag X73 HALFWAY HOUSE 1685	<a href="mailto:strohl@caa.co.za">strohl@caa.co.za</a>	√	-	
SENTECH								
Mr	Koegelenberg	Johan	Broadcast Coverage Planner: RF Networks	Private Bag X06 HONEYDEW 2040	<a href="mailto:koegelenbergj@sentech.co.za">koegelenbergj@sentech.co.za</a>	√	-	
Ms	Pretorius	Alisha		Private Bag X06 HONEYDEW 2040	<a href="mailto:pretoriusa@sentech.co.za">pretoriusa@sentech.co.za</a>	√	-	
TRANSNET FREIGHT RAIL								
Mr	Fiff	Sam	Environmental Manager: Freight Rail	PO Box 255 BLOEMFONTEIN 9300	<a href="mailto:sam.fiff@transnet.net">sam.fiff@transnet.net</a>	√	-	
TELKOM								
Mr	Thurling	Keverne		10 Jan Smuts Drive PINELANDS 7404	<a href="mailto:Thurling@telkom.co.za">Thurling@telkom.co.za</a>	√	-	
Mr	Bester	Amanda	Wayleave Officer	Private Bag X20700 BLOEMFONTEIN 9300	<a href="mailto:WayleaCR@telkom.co.za">WayleaCR@telkom.co.za</a> <a href="mailto:BesterAD@telkom.co.za">BesterAD@telkom.co.za</a>	√	-	
Ms	van den Heever	Heleen	Ops Manager Central Region	Private Bag X20700 BLOEMFONTEIN 9300	<a href="mailto:vdheevhd@telkom.co.za">vdheevhd@telkom.co.za</a>	√	-	
WESSA								
Mr	Griffiths	Morgan	Environmental Governance Programme Manager	PO Box 12444, Centrahill PORT ELIZABETH 6006	<a href="mailto:morgan.griffiths@wessa.co.za">morgan.griffiths@wessa.co.za</a>	√	-	