

# LOCALITY MAP

## LEGEND

- International Boundary and Beacon.....
- Provincial Boundary.....
- Protected Area.....
- Perennial River.....
- Perennial Water.....
- Non-perennial River.....
- Non-Perennial Water.....
- Dry Water Course.....
- Dry Pan.....
- Marsh and Vlei.....
- Pipeline (above ground).....
- Water Tower; Reservoir; Water Point.....
- Coastal Rocks.....
- Prominent Rock Outcrop.....
- Erosion; Sand.....
- Woodland.....
- Cultivated Land.....
- Orchard or Vineyard.....
- Recreation Ground.....
- Row of Trees.....
- National Freeway; National Route.....
- Arterial Route.....
- Main Road.....
- Secondary Road; Bench Mark.....
- Other Road; Bridge.....
- Track and Hiking Trail.....
- Railway; Station or Siding.....
- Other Railway; Tunnel.....
- Embankment; Cutting.....
- Power Line.....
- Built-up Area (High, Low Density).....
- Buildings; Ruin.....
- Post Office; Police Station; Store.....
- Place of Worship; School; Hotel.....
- Fence; Wall.....
- Windpump; Monument.....
- Communication Tower.....
- Mine Dump; Excavation.....
- Trigonometrical Station; Marine Beacon.....
- Lighthouse and Marine Light.....
- Cemetery; Grave.....

## COORDINATES

LONG	LAT
26.95116	-25.3014
26.96021	-25.3014
26.96021	-25.3102
26.95116	-25.3101
26.95116	-25.3014



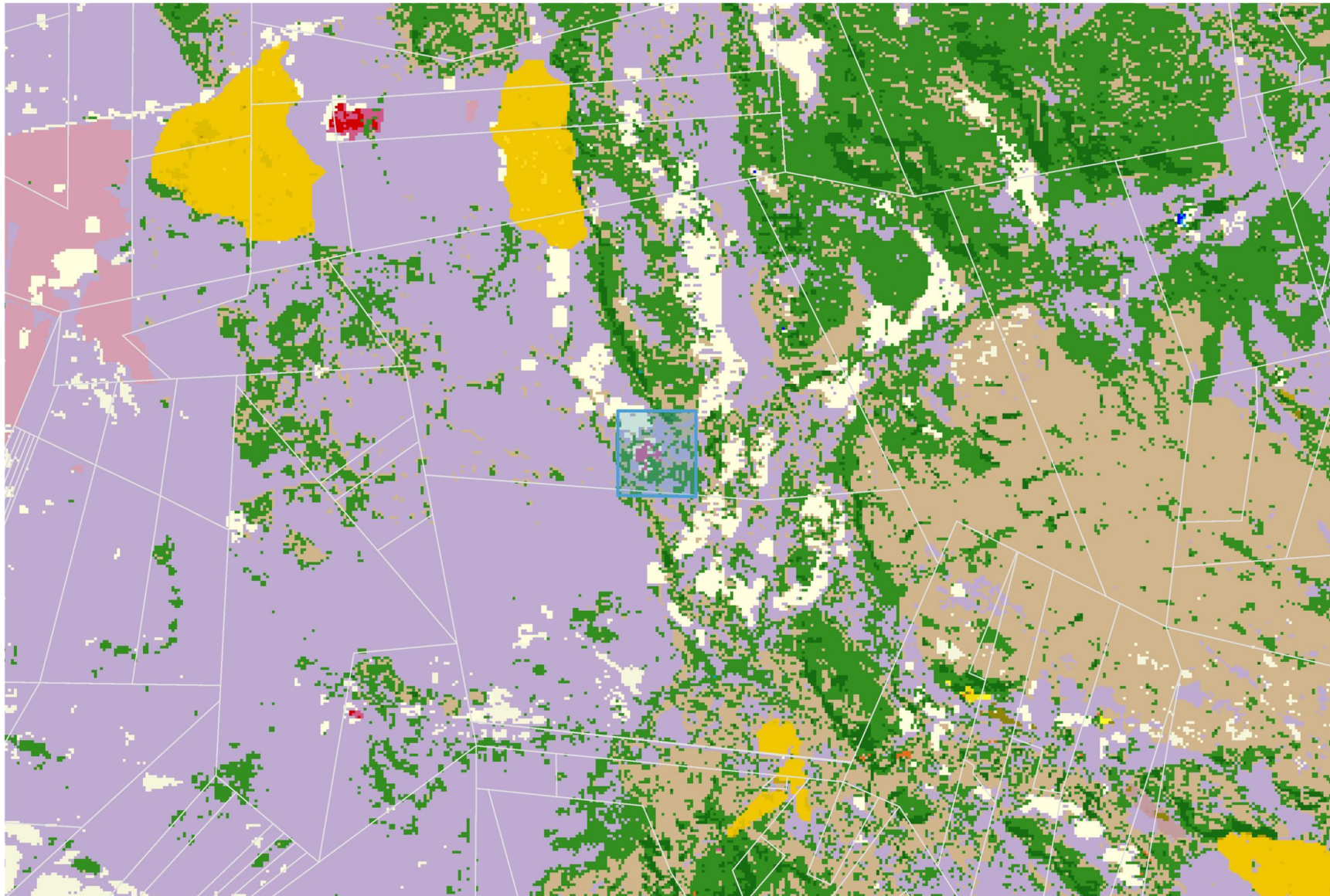
**SCALE: 1:50 000**



**Description**

FIDULEX (PTY) LTD

LAND USE MAP



**Legend**

- National roads
- District municipality
- Local municipalities
- Farm boundaries
- National Landcover 2014**
- Water seasonal
- Water permanent
- Wetlands
- Indigenous Forest
- Thicket/Dense bush
- Woodland/Open bush
- Grassland
- Shrubland fynbos
- Low shrubland
- Cultivated comm fields (high)
- Cultivated comm fields (med)
- Cultivated comm fields (low)
- Cultivated comm pivots (high)
- Cultivated comm pivots (med)
- Cultivated comm pivots (low)
- Cultivated orchards (high)
- Cultivated orchards (med)
- Cultivated orchards (low)
- Cultivated vines (high)
- Cultivated vines (med)
- Mining Right Area

1: 50 000



2,5 0 1,27 2,5 Kilometers