

**SCREENING REPORT FOR AN ENVIRONMENTAL AUTHORIZATION AS  
REQUIRED BY THE 2014 EIA REGULATIONS – PROPOSED SITE  
ENVIRONMENTAL SENSITIVITY**

**EIA Reference number:** TBC

**Project name:** ABO Ujekamanzi MTS & LILO 2

**Project title:** ABO Ujekamanzi MTS & LILO 2 - Substation

**Date screening report generated:** 14/06/2023 14:57:47

**Applicant:** ABO Wind renewable energies (Pty) Ltd

**Compiler:** SiVEST

**Compiler signature:** .....

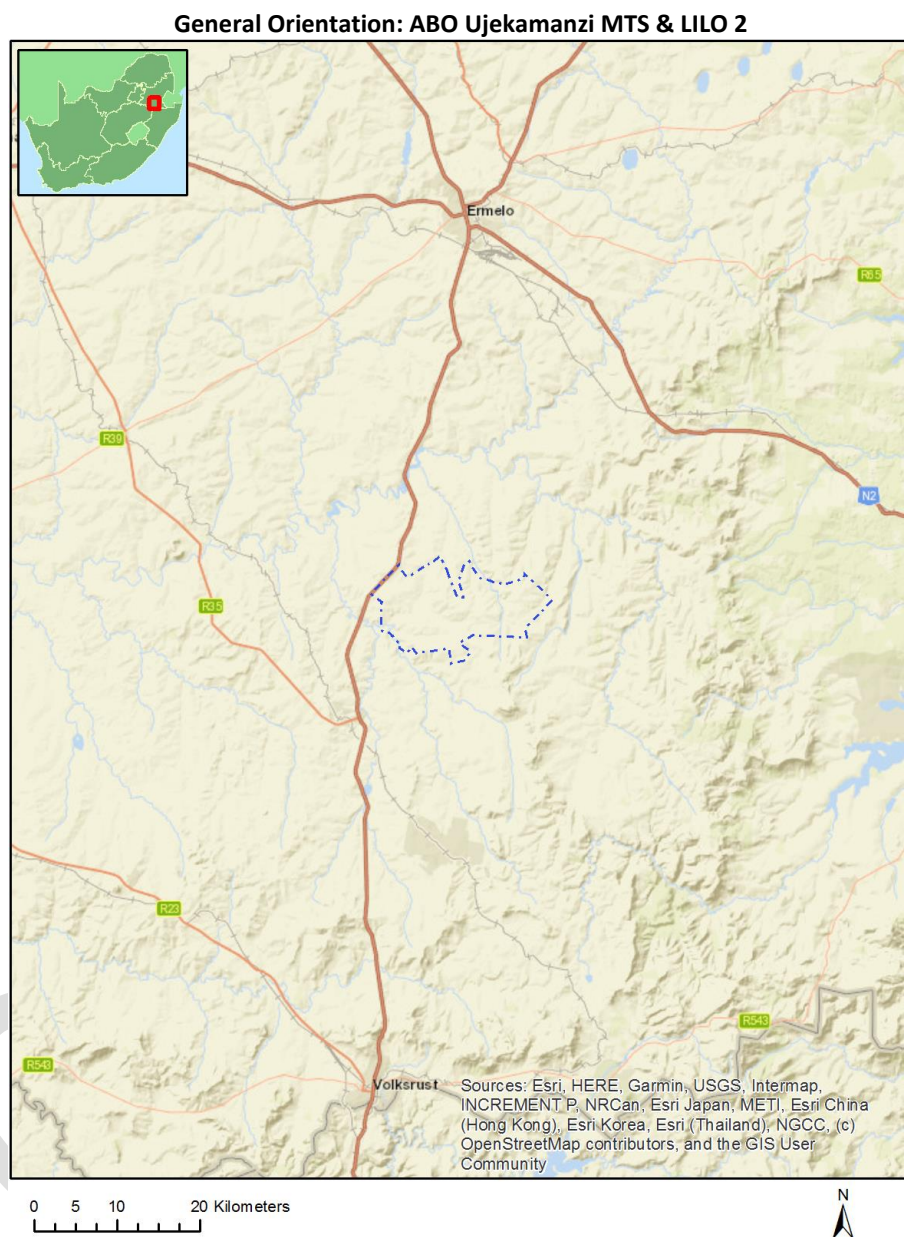
**Application Category:** Utilities Infrastructure|Electricity|Distribution and  
Transmission|Substation

## Table of Contents

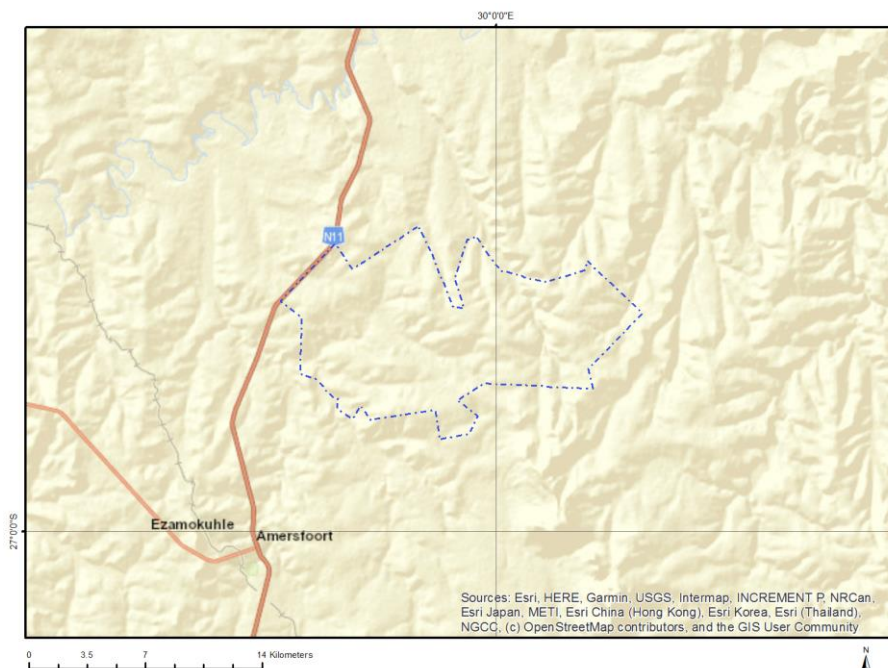
Proposed Project Location .....	3
Orientation map 1: General location .....	3
Map of proposed site and relevant area(s) .....	4
Cadastral details of the proposed site .....	4
Wind and Solar developments with an approved Environmental Authorisation or applications under consideration within 30 km of the proposed area .....	6
Environmental Management Frameworks relevant to the application .....	6
Environmental screening results and assessment outcomes .....	6
Relevant development incentives, restrictions, exclusions or prohibitions .....	6
Proposed Development Area Environmental Sensitivity .....	6
Specialist assessments identified .....	7
Results of the environmental sensitivity of the proposed area .....	8
MAP OF RELATIVE AGRICULTURE THEME SENSITIVITY .....	8
MAP OF RELATIVE ANIMAL SPECIES THEME SENSITIVITY .....	9
MAP OF RELATIVE AQUATIC BIODIVERSITY THEME SENSITIVITY .....	10
MAP OF RELATIVE ARCHAEOLOGICAL AND CULTURAL HERITAGE THEME SENSITIVITY .....	11
MAP OF RELATIVE CIVIL AVIATION THEME SENSITIVITY .....	12
MAP OF RELATIVE DEFENCE THEME SENSITIVITY .....	13
MAP OF RELATIVE PALEONTOLOGY THEME SENSITIVITY .....	14
MAP OF RELATIVE PLANT SPECIES THEME SENSITIVITY .....	15
MAP OF RELATIVE TERRESTRIAL BIODIVERSITY THEME SENSITIVITY .....	16

# Proposed Project Location

## Orientation map 1: General location



## Map of proposed site and relevant area(s)



## Cadastral details of the proposed site

Property details:

No	Farm Name	Farm/ Erf No	Portion	Latitude	Longitude	Property Type
1	KROMHOEK	371	0	26°58'56.73S	30°0'11.01E	Farm
2	KLIPPLAATDRIFT	504	0	26°55'55.01S	29°53'36.28E	Farm
3	VLAKFONTEIN	367	0	26°53'43.92S	30°3'25.07E	Farm
4	ROLFFONTEIN	536	0	26°57'32.54S	29°56'46.39E	Farm
5	MOOIFONTEIN	497	0	26°52'36.28S	29°53'40.37E	Farm
6	STRYDFONTEIN	500	0	26°51'45.67S	29°56'30.32E	Farm
7	VAALBANKSPRUITDRIFT IS	334	0	26°52'27.07S	30°0'37.82E	Farm
8	KNELPOORT	368	0	26°54'46.44S	30°0'30.08E	Farm
9	MOOIFONTEIN	506	0	26°54'26.54S	29°54'49.44E	Farm
10	ELANDSBERG	370	0	26°56'41.2S	30°1'9.89E	Farm
11	BLOEMFONTEIN	503	0	26°54'7.52S	29°57'10.25E	Farm
12	KNELPOORT	368	6	26°54'2.55S	30°1'59.74E	Farm Portion
13	BLOEMFONTEIN	503	5	26°54'19.75S	29°57'31.19E	Farm Portion
14	KLIPPLAATDRIFT	504	23	26°55'46.81S	29°54'8.03E	Farm Portion
15	VAALBANKSPRUITDRIFT IS	334	13	26°52'52.25S	29°59'44.25E	Farm Portion
16	KNELPOORT	368	14	26°55'31.35S	30°1'11.07E	Farm Portion
17	KNELPOORT	368	7	26°55'9.65S	29°59'47.56E	Farm Portion
18	KNELPOORT	368	11	26°53'56.03S	30°1'0.56E	Farm Portion
19	ELANDSBERG	370	8	26°56'42.6S	30°0'29.92E	Farm Portion
20	KROMHOEK	371	1	26°57'57.26S	30°0'8.38E	Farm Portion
21	MOOIFONTEIN	497	13	26°52'46.29S	29°53'57.98E	Farm Portion
22	VAALBANKSPRUITDRIFT IS	334	16	26°53'11.32S	30°0'23.38E	Farm Portion
23	KNELPOORT	368	15	26°55'18.8S	30°2'8.84E	Farm Portion
24	KNELPOORT	368	19	26°55'18.78S	30°2'36.92E	Farm Portion

25	MOOIFONTEIN	497	8	26°54'46.57S	29°55'41.37E	Farm Portion
26	BLOEMFONTEIN	503	7	26°55'8.16S	29°57'0.56E	Farm Portion
27	STRYDFONTEIN	500	0	26°52'10.66S	29°57'28.64E	Farm Portion
28	STRYDFONTEIN	500	2	26°52'23.3S	29°56'26.08E	Farm Portion
29	KNELPOORT	368	4	26°55'28.23S	30°0'0.43E	Farm Portion
30	KNELPOORT	368	8	26°53'56.18S	29°59'18.14E	Farm Portion
31	KNELPOORT	368	18	26°55'17.75S	29°59'12.15E	Farm Portion
32	KNELPOORT	368	5	26°54'20.32S	29°58'41.85E	Farm Portion
33	MOOIFONTEIN	497	14	26°53'37.52S	29°55'18.05E	Farm Portion
34	BLOEMFONTEIN	503	0	26°54'56.95S	29°57'30.1E	Farm Portion
35	BLOEMFONTEIN	503	4	26°54'12.16S	29°56'21.93E	Farm Portion
36	VAALBANKSPRUITDRIFT IS	334	4	26°53'32.15S	30°2'2.29E	Farm Portion
37	VAALBANKSPRUITDRIFT IS	334	6	26°51'58.11S	29°59'30.43E	Farm Portion
38	VAALBANKSPRUITDRIFT IS	334	14	26°52'47.14S	29°59'6.5E	Farm Portion
39	VLAKFONTEIN	367	4	26°54'12.96S	30°3'14.68E	Farm Portion
40	KNELPOORT	368	16	26°55'23.39S	30°0'42.24E	Farm Portion
41	KNELPOORT	368	0	26°55'28.23S	30°1'46.81E	Farm Portion
42	KNELPOORT	368	9	26°55'41.57S	30°2'36.68E	Farm Portion
43	ELANDSBERG	370	2	26°56'12.12S	29°58'53.24E	Farm Portion
44	ELANDSBERG	370	1	26°55'50.3S	29°58'45.19E	Farm Portion
45	MOOIFONTEIN	497	2	26°53'9.32S	29°55'32.23E	Farm Portion
46	MOOIFONTEIN	497	9	26°53'27.6S	29°53'58.25E	Farm Portion
47	KLIPPLAATDRIFT	504	12	26°56'12.6S	29°54'37.84E	Farm Portion
48	VAALBANKSPRUITDRIFT IS	334	3	26°53'32.7S	30°1'27.43E	Farm Portion
49	VAALBANKSPRUITDRIFT IS	334	2	26°53'8.34S	30°1'3.1E	Farm Portion
50	VLAKFONTEIN	367	0	26°53'14.43S	30°3'35.63E	Farm Portion
51	KNELPOORT	368	17	26°54'57.56S	30°1'55.68E	Farm Portion
52	KNELPOORT	368	13	26°54'56.4S	30°1'8.36E	Farm Portion
53	KNELPOORT	368	1	26°54'26.13S	29°59'54.58E	Farm Portion
54	STRYDFONTEIN	500	7	26°52'15.49S	29°55'51.46E	Farm Portion
55	BLOEMFONTEIN	503	3	26°54'13.34S	29°58'4.14E	Farm Portion
56	KLIPPLAATDRIFT	504	13	26°55'59.85S	29°54'15.82E	Farm Portion
57	ROLFONTEIN	536	5	26°56'10.36S	29°56'16.99E	Farm Portion
58	BLOEMFONTEIN	503	0	26°53'20.66S	29°57'12.86E	Farm Portion
59	BLOEMFONTEIN	503	6	26°55'9.99S	29°56'29.03E	Farm Portion
60	ROLFONTEIN	536	6	26°56'12.6S	29°58'19.96E	Farm Portion
61	KLIPPLAATDRIFT	504	22	26°55'47.38S	29°55'16.88E	Farm Portion
62	MOOIFONTEIN	506	0	26°54'23.25S	29°54'49.62E	Farm Portion
63	ROLFONTEIN	536	4	26°56'5.21S	29°57'20.55E	Farm Portion
64	VAALBANKSPRUITDRIFT IS	334	1	26°52'55.76S	30°2'16.62E	Farm Portion
65	VAALBANKSPRUITDRIFT IS	334	15	26°52'25.8S	29°58'31.68E	Farm Portion
66	KNELPOORT	368	12	26°54'43.09S	30°2'24.68E	Farm Portion
67	KNELPOORT	368	3	26°55'13.92S	29°58'21.75E	Farm Portion
68	KNELPOORT	368	2	26°55'16.51S	29°58'51.59E	Farm Portion
69	KNELPOORT	368	10	26°54'18.98S	30°1'7.74E	Farm Portion
70	MOOIFONTEIN	497	10	26°52'32.16S	29°54'37.94E	Farm Portion
71	BLOEMFONTEIN	503	2	26°55'14.88S	29°57'37.8E	Farm Portion
72	BLOEMFONTEIN	503	1	26°54'23.7S	29°56'59.49E	Farm Portion
73	KLIPPLAATDRIFT	504	25	26°54'56.43S	29°54'6.36E	Farm Portion
74	ROLFONTEIN	536	3	26°56'51.99S	29°58'40.81E	Farm Portion
75	ROLFONTEIN	536	2	26°57'31.71S	29°57'17.53E	Farm Portion

Development footprint<sup>1</sup> vertices:  
No development footprint(s) specified.

## Wind and Solar developments with an approved Environmental Authorisation or applications under consideration within 30 km of the proposed area

No	EIA Reference No	Classification	Status of application	Distance from proposed area (km)
1	14/12/16/3/3/2/752	Solar PV	Approved	24.7
2	14/12/16/3/3/2/752	Solar PV	Approved	22.3
3	14/12/16/3/3/2/752	Solar PV	Approved	22.3

## Environmental Management Frameworks relevant to the application

No intersections with EMF areas found.

## Environmental screening results and assessment outcomes

The following sections contain a summary of any development incentives, restrictions, exclusions or prohibitions that apply to the proposed development site as well as the most environmental sensitive features on the site based on the site sensitivity screening results for the application classification that was selected. The application classification selected for this report is: **Utilities Infrastructure | Electricity | Distribution and Transmission | Substation.**

## Relevant development incentives, restrictions, exclusions or prohibitions

The following development incentives, restrictions, exclusions or prohibitions and their implications that apply to this site are indicated below.

Incentive, restriction or prohibition	Implication
Air Quality-Highveld Priority Area	<a href="https://screening.environment.gov.za/ScreeningDownloads/DevelopmentZones/HIGHVELD_PRIORITY_AREA_AQMP.pdf">https://screening.environment.gov.za/ScreeningDownloads/DevelopmentZones/HIGHVELD_PRIORITY_AREA_AQMP.pdf</a>

## Proposed Development Area Environmental Sensitivity

The following summary of the development site environmental sensitivities is identified. Only the highest environmental sensitivity is indicated. The footprint environmental sensitivities for the proposed development footprint as identified, are indicative only and must be verified on site by a suitably qualified person before the specialist assessments identified below can be confirmed.

---

<sup>1</sup> "development footprint", means the area within the site on which the development will take place and includes all ancillary developments for example roads, power lines, boundary walls, paving etc. which require vegetation clearance or which will be disturbed and for which the application has been submitted.



Theme	Very High sensitivity	High sensitivity	Medium sensitivity	Low sensitivity
Agriculture Theme	X			
Animal Species Theme		X		
Aquatic Biodiversity Theme	X			
Archaeological and Cultural Heritage Theme				X
Civil Aviation Theme		X		
Defence Theme				X
Paleontology Theme	X			
Plant Species Theme			X	
Terrestrial Biodiversity Theme	X			

### Specialist assessments identified

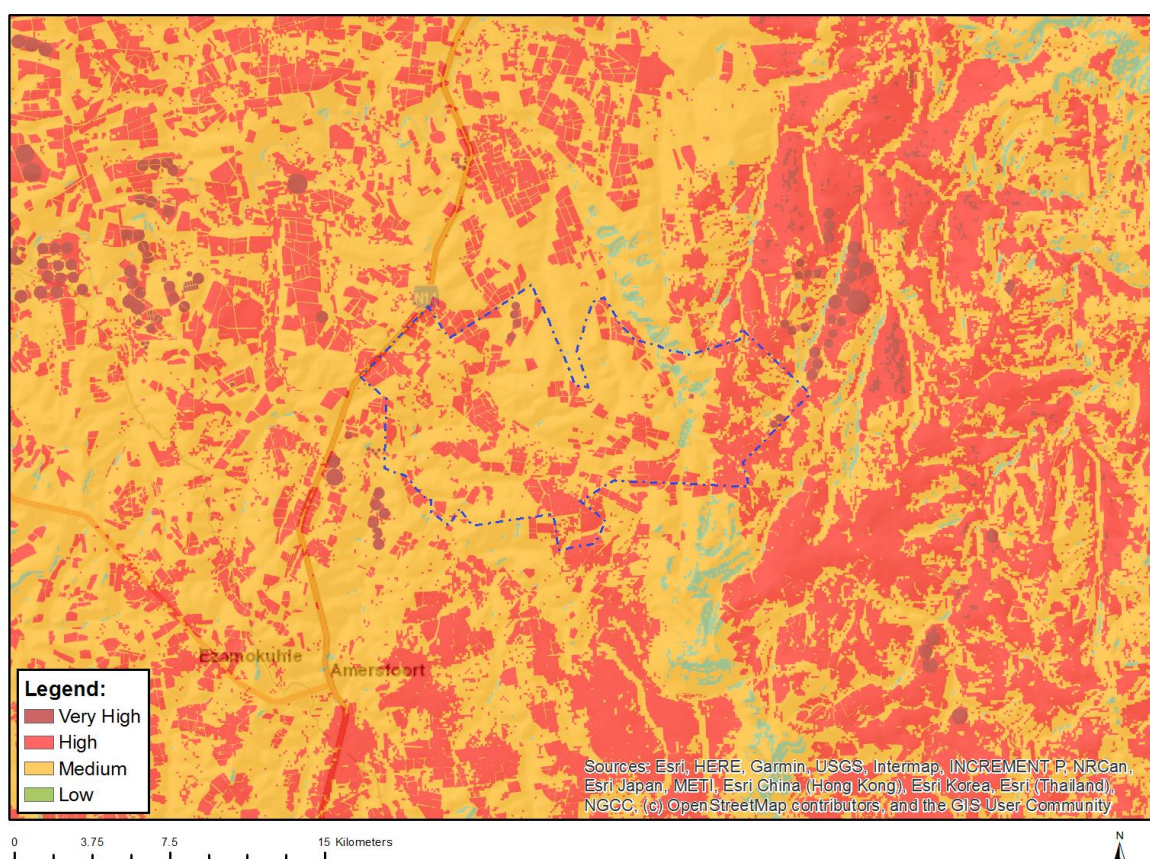
Based on the selected classification, and the known impacts associated with the proposed development, the following list of specialist assessments have been identified for inclusion in the assessment report. It is the responsibility of the EAP to confirm this list and to motivate in the assessment report, the reason for not including any of the identified specialist study including the provision of photographic evidence of the site situation.

No	Specialist assessment	Assessment Protocol
1	Agricultural Impact Assessment	<a href="https://screening.environment.gov.za/ScreeningDownloads/AssessmentProtocols/Gazetted General Agriculture Assessment Protocols.pdf">https://screening.environment.gov.za/ScreeningDownloads/AssessmentProtocols/Gazetted General Agriculture Assessment Protocols.pdf</a>
2	Archaeological and Cultural Heritage Impact Assessment	<a href="https://screening.environment.gov.za/ScreeningDownloads/AssessmentProtocols/Gazetted General Requirement Assessment Protocols.pdf">https://screening.environment.gov.za/ScreeningDownloads/AssessmentProtocols/Gazetted General Requirement Assessment Protocols.pdf</a>
3	Palaeontology Impact Assessment	<a href="https://screening.environment.gov.za/ScreeningDownloads/AssessmentProtocols/Gazetted General Requirement Assessment Protocols.pdf">https://screening.environment.gov.za/ScreeningDownloads/AssessmentProtocols/Gazetted General Requirement Assessment Protocols.pdf</a>
4	Terrestrial Biodiversity Impact Assessment	<a href="https://screening.environment.gov.za/ScreeningDownloads/AssessmentProtocols/Gazetted Terrestrial Biodiversity Assessment Protocols.pdf">https://screening.environment.gov.za/ScreeningDownloads/AssessmentProtocols/Gazetted Terrestrial Biodiversity Assessment Protocols.pdf</a>
5	Aquatic Biodiversity Impact Assessment	<a href="https://screening.environment.gov.za/ScreeningDownloads/AssessmentProtocols/Gazetted Aquatic Biodiversity Assessment Protocols.pdf">https://screening.environment.gov.za/ScreeningDownloads/AssessmentProtocols/Gazetted Aquatic Biodiversity Assessment Protocols.pdf</a>
6	Geotechnical Assessment	<a href="https://screening.environment.gov.za/ScreeningDownloads/AssessmentProtocols/Gazetted General Requirement Assessment Protocols.pdf">https://screening.environment.gov.za/ScreeningDownloads/AssessmentProtocols/Gazetted General Requirement Assessment Protocols.pdf</a>
7	Plant Species Assessment	<a href="https://screening.environment.gov.za/ScreeningDownloads/AssessmentProtocols/Gazetted Plant Species Assessment Protocols.pdf">https://screening.environment.gov.za/ScreeningDownloads/AssessmentProtocols/Gazetted Plant Species Assessment Protocols.pdf</a>
8	Animal Species Assessment	<a href="https://screening.environment.gov.za/ScreeningDownloads/AssessmentProtocols/Gazetted Animal Species Assessment Protocols.pdf">https://screening.environment.gov.za/ScreeningDownloads/AssessmentProtocols/Gazetted Animal Species Assessment Protocols.pdf</a>

## Results of the environmental sensitivity of the proposed area.

The following section represents the results of the screening for environmental sensitivity of the proposed site for relevant environmental themes associated with the project classification. It is the duty of the EAP to ensure that the environmental themes provided by the screening tool are comprehensive and complete for the project. Refer to the disclaimer.

### MAP OF RELATIVE AGRICULTURE THEME SENSITIVITY



Very High sensitivity	High sensitivity	Medium sensitivity	Low sensitivity
X			

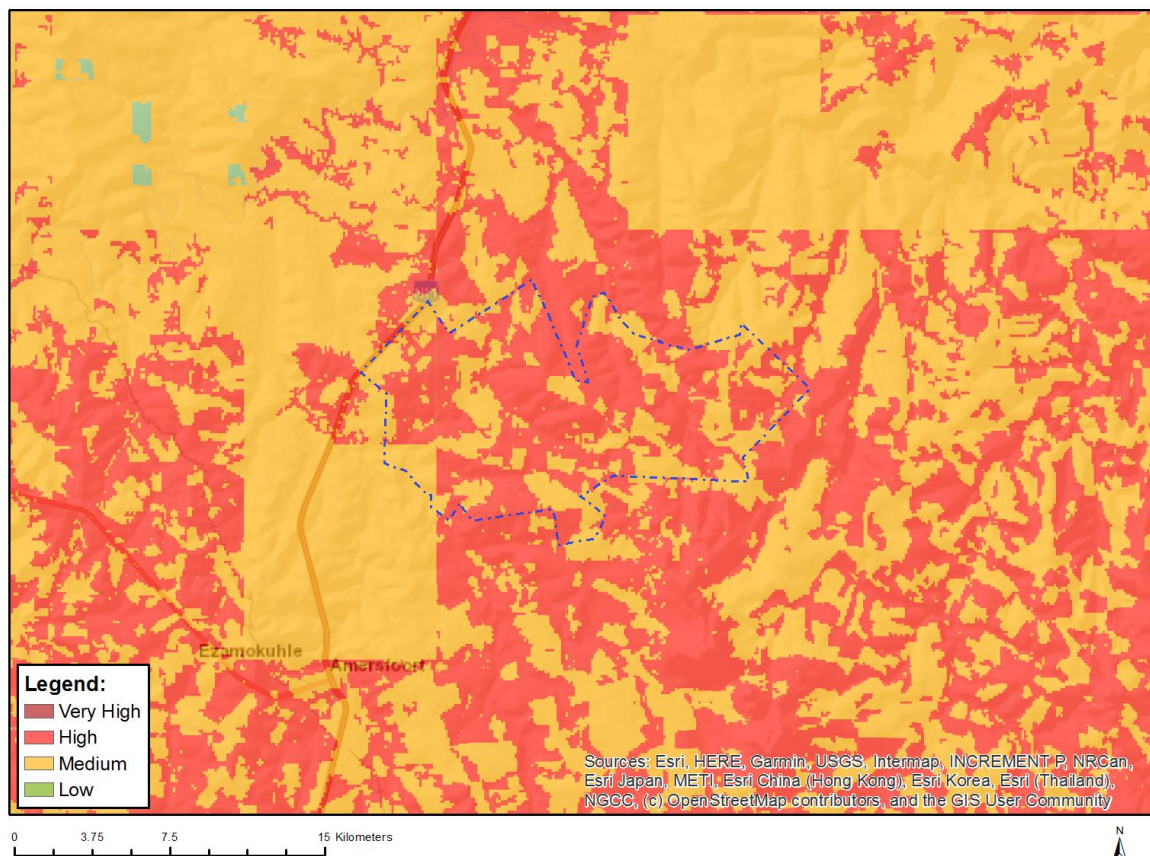
#### Sensitivity Features:

Sensitivity	Feature(s)
High	Land capability;09. Moderate-High/10. Moderate-High
High	Annual Crop Cultivation / Planted Pastures Rotation;Land capability;06. Low-Moderate/07. Low-Moderate/08. Moderate
High	Annual Crop Cultivation / Planted Pastures Rotation;Land capability;09. Moderate-High/10. Moderate-High
High	Old Fields;Land capability;06. Low-Moderate/07. Low-Moderate/08. Moderate
High	Old Fields;Land capability;09. Moderate-High/10. Moderate-High
High	Annual Crop Cultivation / Planted Pastures Rotation;Land capability;01. Very low/02. Very low/03. Low-Very low/04. Low-Very low/05. Low
Low	Land capability;01. Very low/02. Very low/03. Low-Very low/04. Low-Very low/05. Low



Medium	Land capability;06. Low-Moderate/07. Low-Moderate/08. Moderate
Very High	Pivot Irrigation;Land capability;09. Moderate-High/10. Moderate-High
Very High	Pivot Irrigation;Land capability;06. Low-Moderate/07. Low-Moderate/08. Moderate

## MAP OF RELATIVE ANIMAL SPECIES THEME SENSITIVITY



Where only a sensitive plant unique number or sensitive animal unique number is provided in the screening report and an assessment is required, the environmental assessment practitioner (EAP) or specialist is required to email SANBI at [eiadatarequests@sanbi.org.za](mailto:eiadatarequests@sanbi.org.za) listing all sensitive species with their unique identifiers for which information is required. The name has been withheld as the species may be prone to illegal harvesting and must be protected. SANBI will release the actual species name after the details of the EAP or specialist have been documented.

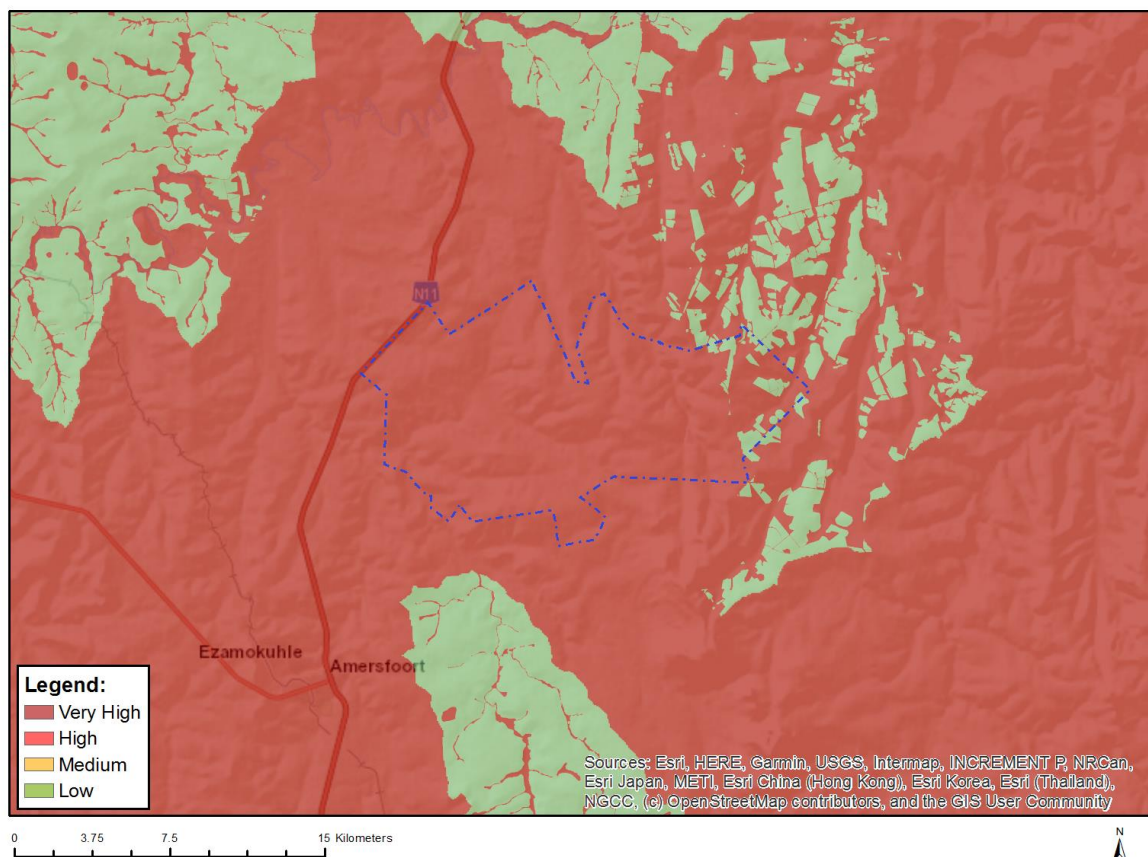
Very High sensitivity	High sensitivity	Medium sensitivity	Low sensitivity
	X		

### Sensitivity Features:

Sensitivity	Feature(s)
High	Aves-Balearica regulorum
High	Aves-Sagittarius serpentarius
High	Aves-Geronticus calvus
High	Aves-Eupodotis senegalensis
Medium	Aves-Neotis denhami
Medium	Aves-Balearica regulorum
Medium	Aves-Eupodotis senegalensis
Medium	Aves-Circus ranivorus
Medium	Aves-Hydroprogne caspia

Medium	Aves-Sagittarius serpentarius
Medium	Aves-Geronticus calvus
Medium	Aves-Tyto capensis
Medium	Mammalia-Chrysospalax villosus
Medium	Mammalia-Crocidura maquassiensis
Medium	Mammalia-Ourebia ourebi ourebi

## MAP OF RELATIVE AQUATIC BIODIVERSITY THEME SENSITIVITY

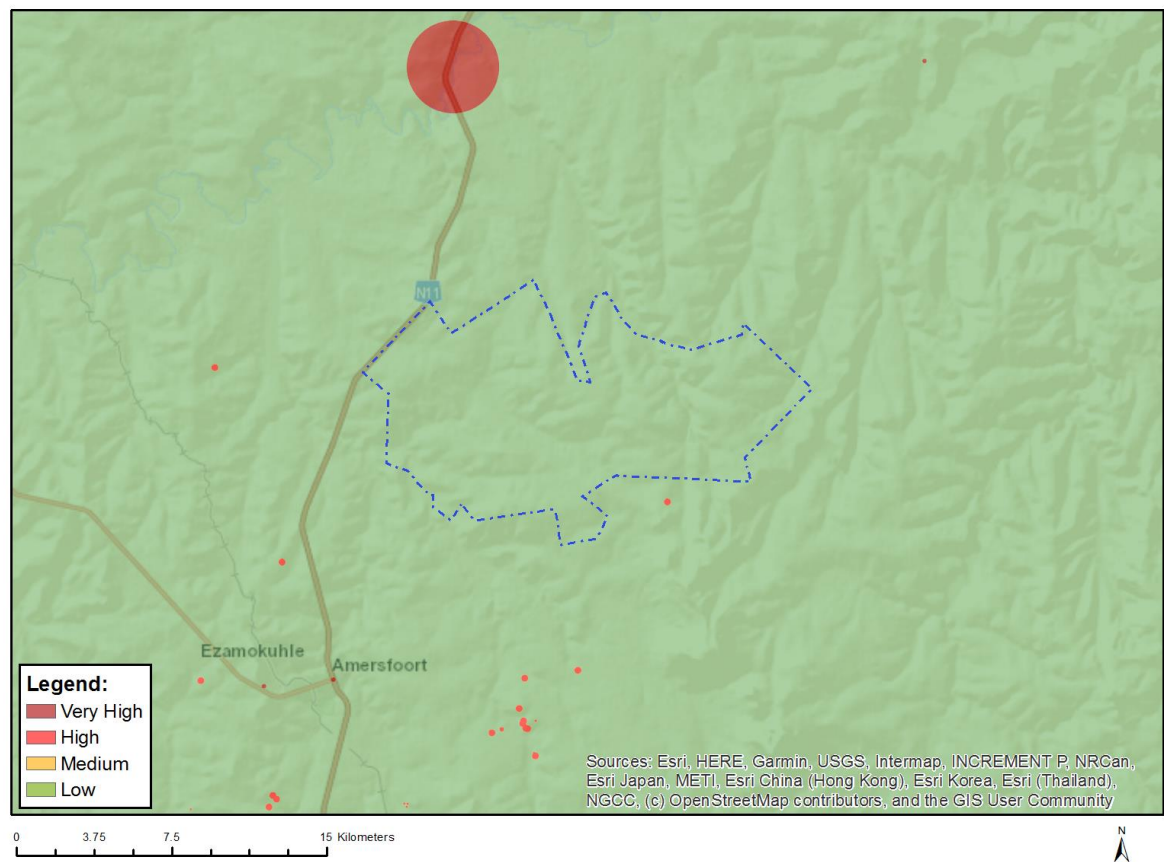


Very High sensitivity	High sensitivity	Medium sensitivity	Low sensitivity
X			

### Sensitivity Features:

Sensitivity	Feature(s)
Low	Low sensitivity
Very High	CBA: Aquatic rivers
Very High	CBA: Wetlands
Very High	ESA: Important subcatchments
Very High	ESA: Wetlands
Very High	FEPA Subcatchment
Very High	Rivers_AB
Very High	Wetlands_Mesic Highveld Grassland Bioregion (Depression)
Very High	Wetlands_Mesic Highveld Grassland Bioregion (Floodplain)
Very High	Wetlands_Mesic Highveld Grassland Bioregion (Seep)
Very High	Wetlands_Mesic Highveld Grassland Bioregion (Valley-bottom)

# MAP OF RELATIVE ARCHAEOLOGICAL AND CULTURAL HERITAGE THEME SENSITIVITY



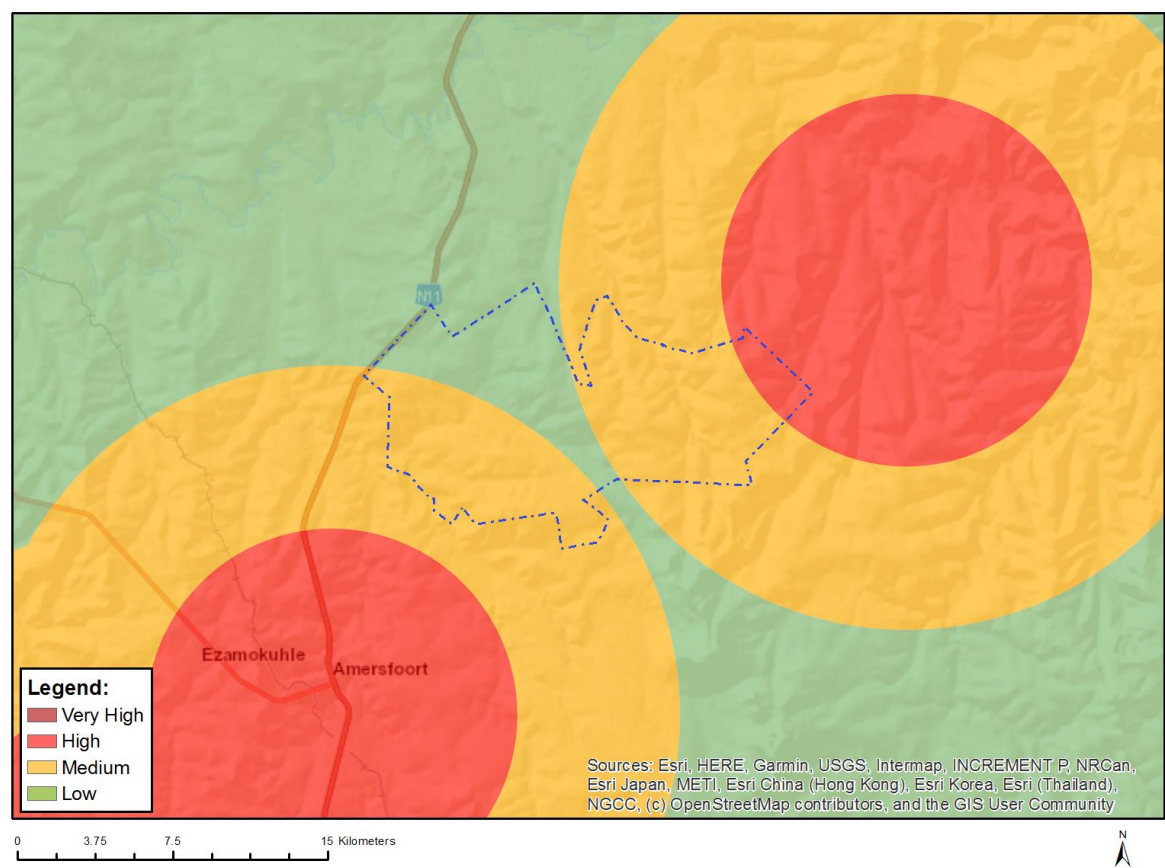
Very High sensitivity	High sensitivity	Medium sensitivity	Low sensitivity
			X

## Sensitivity Features:

Sensitivity	Feature(s)
Low	Low sensitivity



MAP OF RELATIVE CIVIL AVIATION THEME SENSITIVITY

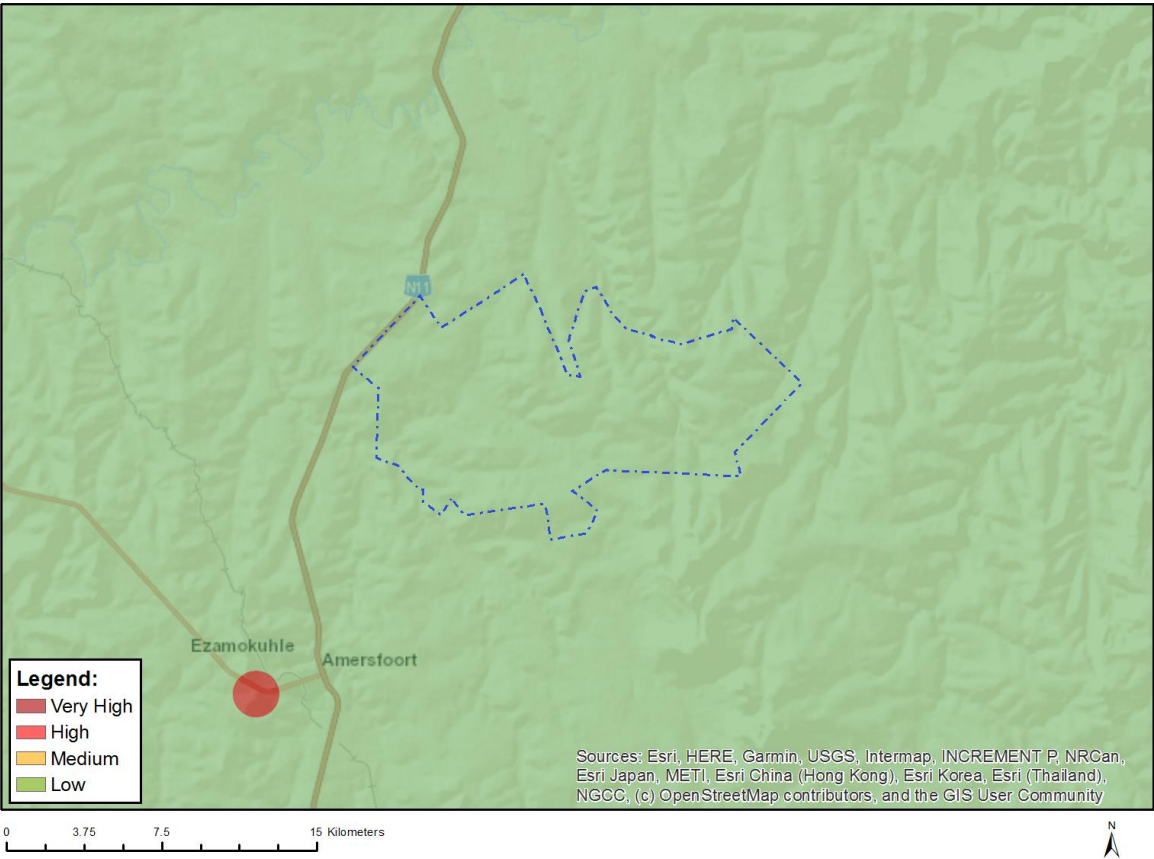


Very High sensitivity	High sensitivity	Medium sensitivity	Low sensitivity
	X		

Sensitivity Features:

Sensitivity	Feature(s)
High	Within 8 km of other civil aviation aerodrome
Low	Low sensitivity
Medium	Between 8 and 15 km of other civil aviation aerodrome

# MAP OF RELATIVE DEFENCE THEME SENSITIVITY



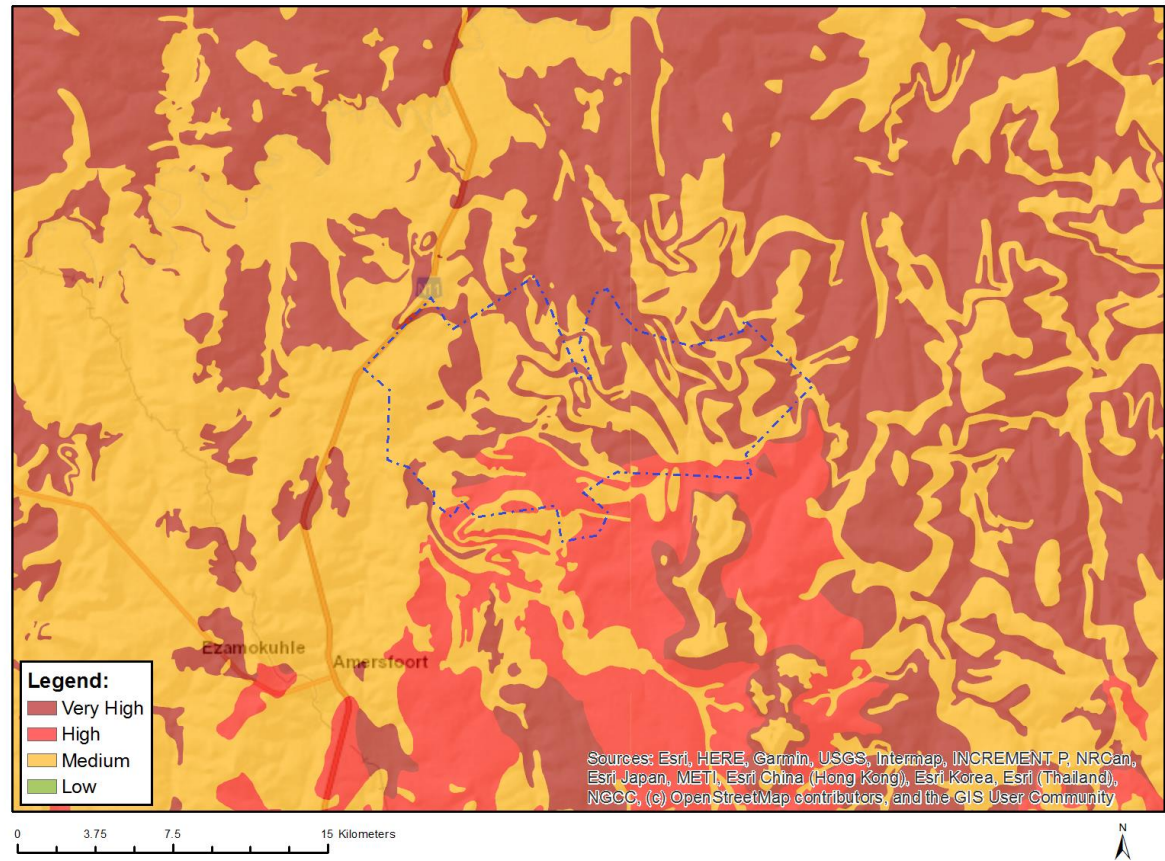
Very High sensitivity	High sensitivity	Medium sensitivity	Low sensitivity
			X

## Sensitivity Features:

Sensitivity	Feature(s)
Low	Low Sensitivity



MAP OF RELATIVE PALEONTOLOGY THEME SENSITIVITY

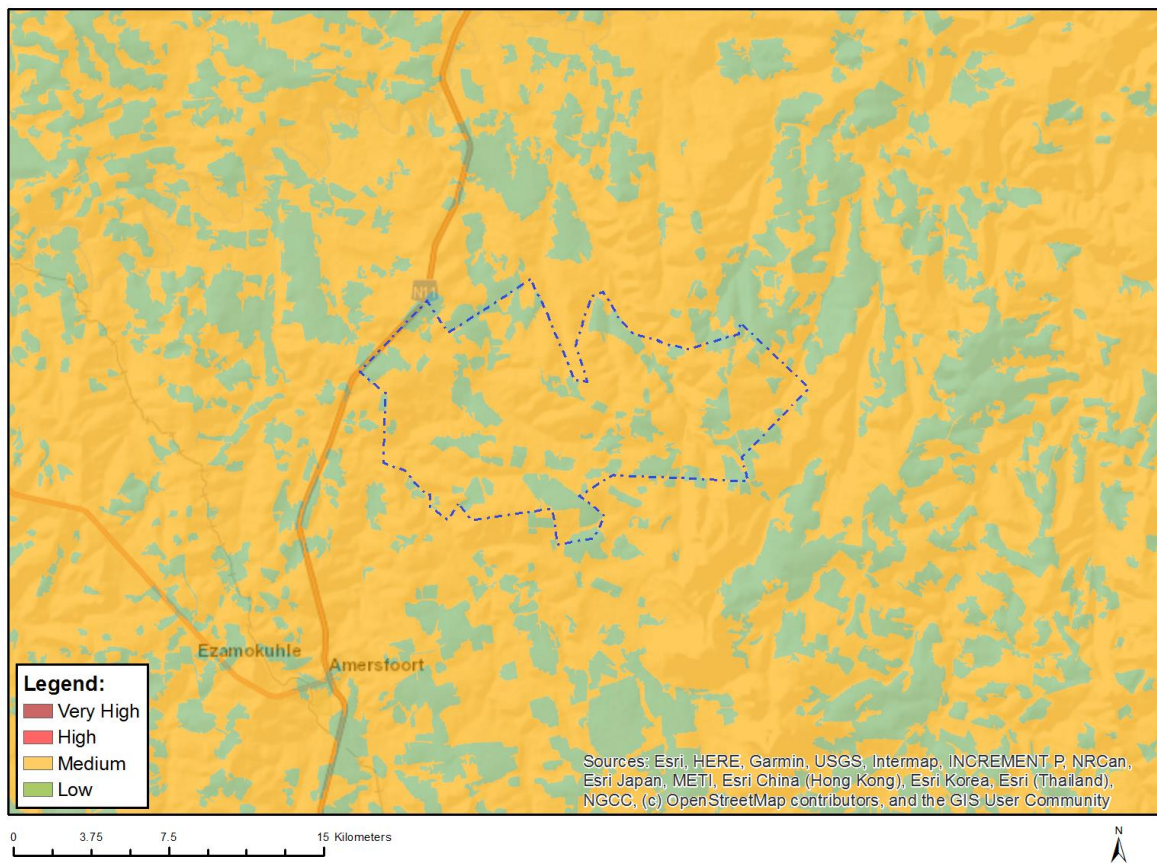


Very High sensitivity	High sensitivity	Medium sensitivity	Low sensitivity
X			

Sensitivity Features:

Sensitivity	Feature(s)
High	Features with a High paleontological sensitivity
Medium	Features with a Medium paleontological sensitivity
Very High	Features with a Very High paleontological sensitivity

## MAP OF RELATIVE PLANT SPECIES THEME SENSITIVITY



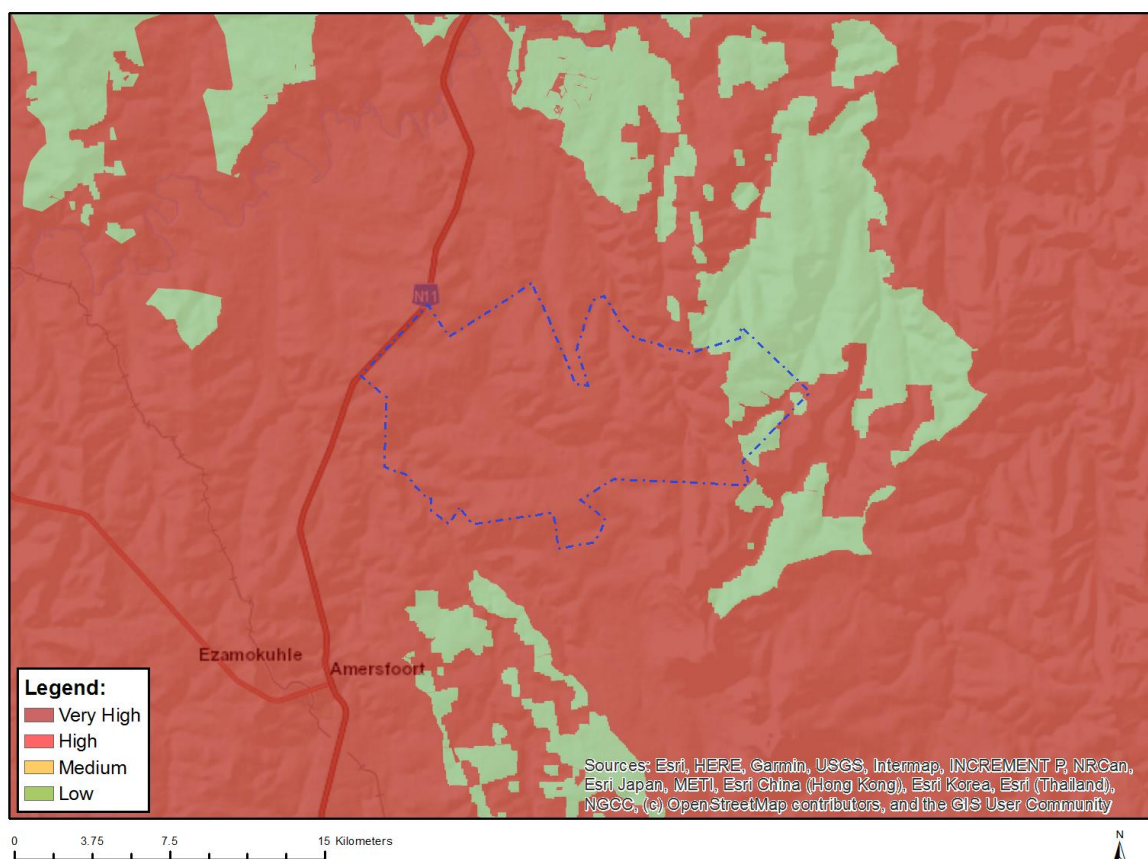
Where only a sensitive plant unique number or sensitive animal unique number is provided in the screening report and an assessment is required, the environmental assessment practitioner (EAP) or specialist is required to email SANBI at [eiadatarequests@sanbi.org.za](mailto:eiadatarequests@sanbi.org.za) listing all sensitive species with their unique identifiers for which information is required. The name has been withheld as the species may be prone to illegal harvesting and must be protected. SANBI will release the actual species name after the details of the EAP or specialist have been documented.

Very High sensitivity	High sensitivity	Medium sensitivity	Low sensitivity
		X	

### Sensitivity Features:

Sensitivity	Feature(s)
Low	Low Sensitivity
Medium	Sensitive species 1252
Medium	Sensitive species 314
Medium	Aspidoglossum xanthosphaerum
Medium	Lotononis amajubica
Medium	Sensitive species 41
Medium	Sensitive species 998
Medium	Sensitive species 321
Medium	Sensitive species 851
Medium	Zaluzianskya distans

## MAP OF RELATIVE TERRESTRIAL BIODIVERSITY THEME SENSITIVITY



Very High sensitivity	High sensitivity	Medium sensitivity	Low sensitivity
X			

### Sensitivity Features:

Sensitivity	Feature(s)
Low	Low Sensitivity
Very High	CBA 1
Very High	CBA 2
Very High	ESA: Local corridor
Very High	FEPA Subcatchment
Very High	National Protected Area Expansion Strategy (NPAES)