

**SCREENING REPORT FOR AN ENVIRONMENTAL AUTHORIZATION AS
REQUIRED BY THE 2014 EIA REGULATIONS – PROPOSED SITE
ENVIRONMENTAL SENSITIVITY**

EIA Reference number: TBA

Project name: ABO Ujekamanzi WEF 1

Project title: ABO Ujekamanzi WEF 1

Date screening report generated: 20/04/2023 08:30:13

Applicant: ABO Ujekamanzi Wind Energy Facility 1

Compiler: SiVEST

Compiler signature:
.....

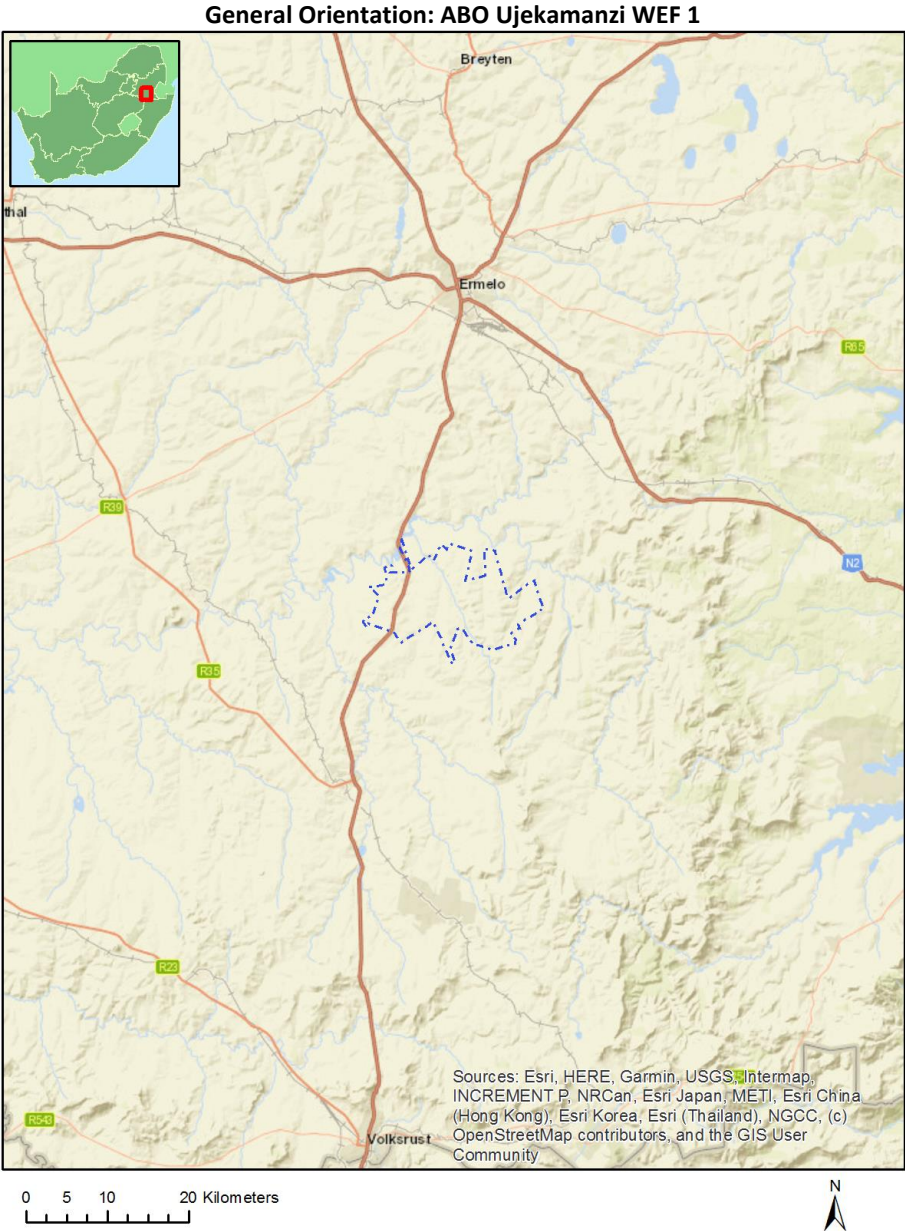
Application Category: Utilities Infrastructure | Electricity | Generation | Renewable | Wind

Table of Contents

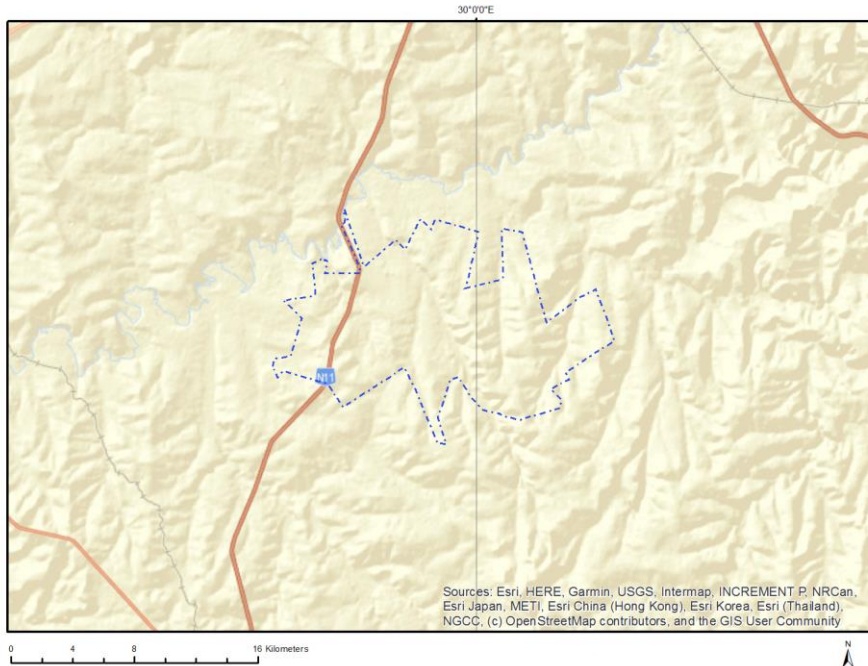
Proposed Project Location	3
Orientation map 1: General location	3
Map of proposed site and relevant area(s)	4
Cadastral details of the proposed site	4
Wind and Solar developments with an approved Environmental Authorisation or applications under consideration within 30 km of the proposed area	6
Environmental Management Frameworks relevant to the application	6
Environmental screening results and assessment outcomes	6
Relevant development incentives, restrictions, exclusions or prohibitions	6
Proposed Development Area Environmental Sensitivity	6
Specialist assessments identified	7
Results of the environmental sensitivity of the proposed area	9
MAP OF RELATIVE AGRICULTURE THEME SENSITIVITY	9
MAP OF RELATIVE ANIMAL SPECIES THEME SENSITIVITY	10
MAP OF RELATIVE AQUATIC BIODIVERSITY THEME SENSITIVITY	11
MAP OF RELATIVE ARCHAEOLOGICAL AND CULTURAL HERITAGE THEME SENSITIVITY	12
MAP OF RELATIVE AVIAN (WIND) THEME SENSITIVITY	13
MAP OF RELATIVE BATS (WIND) THEME SENSITIVITY	14
MAP OF RELATIVE CIVIL AVIATION (WIND) THEME SENSITIVITY	15
MAP OF RELATIVE DEFENCE (WIND) THEME SENSITIVITY	16
MAP OF RELATIVE FLICKER THEME SENSITIVITY	17
MAP OF RELATIVE LANDSCAPE (WIND) THEME SENSITIVITY	18
MAP OF RELATIVE PALEONTOLOGY THEME SENSITIVITY	19
MAP OF RELATIVE NOISE THEME SENSITIVITY	20
MAP OF RELATIVE PLANT SPECIES THEME SENSITIVITY	21
MAP OF RELATIVE RFI (WIND) THEME SENSITIVITY	22
MAP OF RELATIVE TERRESTRIAL BIODIVERSITY THEME SENSITIVITY	23

Proposed Project Location

Orientation map 1: General location



Map of proposed site and relevant area(s)



Cadastral details of the proposed site

Property details:

No	Farm Name	Farm/ Erf No	Portion	Latitude	Longitude	Property Type
1	VYFHOEK	335	0	26°51'6.35S	30°3'42.89E	Farm
2	VAALBANKSPRUITDRIFT IS	334	0	26°52'27.07S	30°0'37.82E	Farm
3	VAALKRANS	475	0	26°48'7.74S	29°57'1.65E	Farm
4	MOOIFONTEIN	497	0	26°52'36.28S	29°53'40.37E	Farm
5	STRYDFONTEIN	500	0	26°51'45.67S	29°56'30.32E	Farm
6	BUHRMANN'S PLAATS	332	0	26°47'13.96S	30°2'49.38E	Farm
7	FAMILIEHOEK	333	0	26°48'7.75S	30°0'56.16E	Farm
8	VLAKFONTEIN	499	0	26°50'24.03S	29°58'52.11E	Farm
9	PIET-ZYN-DRIFT	476	0	26°48'47.39S	29°54'42.85E	Farm
10	BEGIN DER LYN	474	0	26°46'45.19S	29°58'40.38E	Farm
11	UITSPANNING	477	0	26°46'21.32S	29°54'51.99E	Farm
12	GOEDERTROUW	498	0	26°50'40.86S	29°53'56.21E	Farm
13	FAMILIEHOEK	333	5	26°49'7.18S	30°1'57.7E	Farm Portion
14	FAMILIEHOEK	333	6	26°48'39.19S	30°1'13.55E	Farm Portion
15	VAALBANKSPRUITDRIFT IS	334	10	26°51'47.31S	29°59'42.7E	Farm Portion
16	VYFHOEK	335	0	26°50'45.76S	30°2'21.72E	Farm Portion
17	VAALBANKSPRUITDRIFT IS	334	0	26°52'10.23S	30°0'37.56E	Farm Portion
18	BEGIN DER LYN	474	11	26°47'56.35S	29°58'29.75E	Farm Portion
19	BEGIN DER LYN	474	13	26°47'47.88S	29°59'19.43E	Farm Portion
20	BUHRMANN'S PLAATS	332	0	26°48'16.08S	30°3'21.13E	Farm Portion
21	VYFHOEK	335	7	26°49'25.93S	30°3'34.83E	Farm Portion
22	BEGIN DER LYN	474	8	26°47'10.82S	29°57'58.34E	Farm Portion
23	BEGIN DER LYN	474	10	26°47'18.86S	29°58'58.06E	Farm Portion
24	FAMILIEHOEK	333	9	26°49'59.06S	30°1'25.1E	Farm Portion

25	VYFHOEK	335	5	26°50'10.34S	30°4'11.34E	Farm Portion
26	VAALKRANS	475	4	26°49'20.12S	29°56'43.63E	Farm Portion
27	PIET-ZYN-DRIFT	476	13	26°48'51.23S	29°56'1.73E	Farm Portion
28	PIET-ZYN-DRIFT	476	21	26°48'16.36S	29°54'30.24E	Farm Portion
29	PIET-ZYN-DRIFT	476	29	26°49'1.23S	29°55'39.06E	Farm Portion
30	PIET-ZYN-DRIFT	476	2	26°49'26.64S	29°55'7.76E	Farm Portion
31	PIET-ZYN-DRIFT	476	3	26°47'44.18S	29°55'51.86E	Farm Portion
32	PIET-ZYN-DRIFT	476	28	26°47'17.08S	29°55'32.34E	Farm Portion
33	BUHRMANN'S PLAATS	332	1	26°46'16.66S	30°2'20.1E	Farm Portion
34	VAALBANKSPRUITDRIFT IS	334	5	26°52'1.3S	30°1'34.48E	Farm Portion
35	VAALBANKSPRUITDRIFT IS	334	8	26°51'15.53S	30°1'12.87E	Farm Portion
36	VAALBANKSPRUITDRIFT IS	334	9	26°51'27.8S	30°0'17.98E	Farm Portion
37	VYFHOEK	335	11	26°50'46.49S	30°3'0.82E	Farm Portion
38	BEGIN DER LYN	474	7	26°46'56.23S	29°59'11.45E	Farm Portion
39	BEGIN DER LYN	474	1	26°48'29.19S	29°59'17.53E	Farm Portion
40	VAALKRANS	475	5	26°49'12.84S	29°57'41.9E	Farm Portion
41	PIET-ZYN-DRIFT	476	22	26°50'9.88S	29°54'49.91E	Farm Portion
42	PIET-ZYN-DRIFT	476	26	26°48'46.4S	29°55'43.48E	Farm Portion
43	UITSPANNING	477	2	26°46'51.39S	29°54'43.96E	Farm Portion
44	MOOIFONTEIN	497	11	26°51'17.14S	29°53'3.09E	Farm Portion
45	GOEDERTROUW	498	3	26°51'9.09S	29°54'51.91E	Farm Portion
46	VLAKFONTEIN	499	0	26°50'24.03S	29°58'52.11E	Farm Portion
47	FAMILIEHOEK	333	2	26°48'56.25S	30°0'15.68E	Farm Portion
48	FAMILIEHOEK	333	3	26°47'11.49S	30°0'27.91E	Farm Portion
49	VYFHOEK	335	10	26°50'43.19S	30°1'36.4E	Farm Portion
50	VAALKRANS	475	0	26°47'57.75S	29°56'54.41E	Farm Portion
51	PIET-ZYN-DRIFT	476	5	26°49'51.23S	29°56'22.07E	Farm Portion
52	PIET-ZYN-DRIFT	476	8	26°48'1.63S	29°55'28.14E	Farm Portion
53	PIET-ZYN-DRIFT	476	7	26°48'24.76S	29°55'30.79E	Farm Portion
54	PIET-ZYN-DRIFT	476	32	26°50'10.82S	29°55'6.18E	Farm Portion
55	PIET-ZYN-DRIFT	476	33	26°50'40.14S	29°54'55.95E	Farm Portion
56	UITSPANNING	477	0	26°45'52.85S	29°55'26.32E	Farm Portion
57	STRYDFONTEIN	500	8	26°51'46.31S	29°55'32.69E	Farm Portion
58	STRYDFONTEIN	500	9	26°50'59.8S	29°55'56.69E	Farm Portion
59	FAMILIEHOEK	333	1	26°49'41.04S	30°0'36.71E	Farm Portion
60	FAMILIEHOEK	333	4	26°47'35.68S	30°1'27.24E	Farm Portion
61	VYFHOEK	335	6	26°50'24.52S	30°3'21.39E	Farm Portion
62	VAALKRANS	475	2	26°48'27.95S	29°57'43.52E	Farm Portion
63	VAALKRANS	475	3	26°48'48.48S	29°56'47.69E	Farm Portion
64	PIET-ZYN-DRIFT	476	11	26°50'18.64S	29°55'31.46E	Farm Portion
65	PIET-ZYN-DRIFT	476	12	26°48'33.23S	29°54'54.35E	Farm Portion
66	PIET-ZYN-DRIFT	476	7	26°48'24.76S	29°55'30.79E	Farm Portion
67	PIET-ZYN-DRIFT	476	6	26°49'13.61S	29°56'1.61E	Farm Portion
68	PIET-ZYN-DRIFT	476	25	26°49'15.69S	29°54'20.18E	Farm Portion
69	PIET-ZYN-DRIFT	476	10	26°47'41.9S	29°54'56.87E	Farm Portion
70	PIET-ZYN-DRIFT	476	1	26°48'42.81S	29°55'34.45E	Farm Portion
71	GOEDERTROUW	498	1	26°50'20.84S	29°54'3.42E	Farm Portion
72	STRYDFONTEIN	500	1	26°50'59.04S	29°56'48.14E	Farm Portion
73	PIET-ZYN-DRIFT	476	30	26°48'19.64S	29°55'51.54E	Farm Portion
74	STRYDFONTEIN	500	0	26°52'10.66S	29°57'28.64E	Farm Portion
75	VAALBANKSPRUITDRIFT IS	334	15	26°52'25.8S	29°58'31.68E	Farm Portion
76	VAALBANKSPRUITDRIFT IS	334	7	26°52'8.31S	30°2'12.37E	Farm Portion
77	VYFHOEK	335	2	26°51'35.15S	30°2'51.54E	Farm Portion
78	PIET-ZYN-DRIFT	476	27	26°49'17.16S	29°55'34.34E	Farm Portion
79	PIET-ZYN-DRIFT	476	6	26°49'13.61S	29°56'1.61E	Farm Portion

80	GOEDERTROUW	498	0	26°51'1.45S	29°54'3.29E	Farm Portion
----	-------------	-----	---	-------------	-------------	--------------

Development footprint¹ vertices:
No development footprint(s) specified.

Wind and Solar developments with an approved Environmental Authorisation or applications under consideration within 30 km of the proposed area

No	EIA Reference No	Classification	Status of application	Distance from proposed area (km)
1	14/12/16/3/3/2/752	Solar PV	Approved	28.8
2	14//12/16/3/3/2/752	Solar PV	Approved	28.8

Environmental Management Frameworks relevant to the application

No intersections with EMF areas found.

Environmental screening results and assessment outcomes

The following sections contain a summary of any development incentives, restrictions, exclusions or prohibitions that apply to the proposed development site as well as the most environmental sensitive features on the site based on the site sensitivity screening results for the application classification that was selected. The application classification selected for this report is: **Utilities Infrastructure | Electricity | Generation | Renewable | Wind.**

Relevant development incentives, restrictions, exclusions or prohibitions

The following development incentives, restrictions, exclusions or prohibitions and their implications that apply to this site are indicated below.

Incentive, restriction or prohibition	Implication
Air Quality-Highveld Priority Area	https://screening.environment.gov.za/ScreeningDownloads/DevelopmentZones/HIGHVELD_PRIORITY_AREA_AQMP.pdf

Proposed Development Area Environmental Sensitivity

The following summary of the development site environmental sensitivities is identified. Only the highest environmental sensitivity is indicated. The footprint environmental sensitivities for the

¹ “development footprint”, means the area within the site on which the development will take place and includes all ancillary developments for example roads, power lines, boundary walls, paving etc. which require vegetation clearance or which will be disturbed and for which the application has been submitted.

proposed development footprint as identified, are indicative only and must be verified on site by a suitably qualified person before the specialist assessments identified below can be confirmed.

Theme	Very High sensitivity	High sensitivity	Medium sensitivity	Low sensitivity
Agriculture Theme	X			
Animal Species Theme		X		
Aquatic Biodiversity Theme	X			
Archaeological and Cultural Heritage Theme	X			
Avian (Wind) Theme				X
Bats (Wind) Theme		X		
Civil Aviation (Wind) Theme		X		
Defence (Wind) Theme				X
Flicker Theme	X			
Landscape (Wind) Theme	X			
Paleontology Theme	X			
Noise Theme	X			
Plant Species Theme			X	
RFI (Wind) Theme		X		
Terrestrial Biodiversity Theme	X			

Specialist assessments identified

Based on the selected classification, and the known impacts associated with the proposed development, the following list of specialist assessments have been identified for inclusion in the assessment report. It is the responsibility of the EAP to confirm this list and to motivate in the assessment report, the reason for not including any of the identified specialist study including the provision of photographic evidence of the site situation.

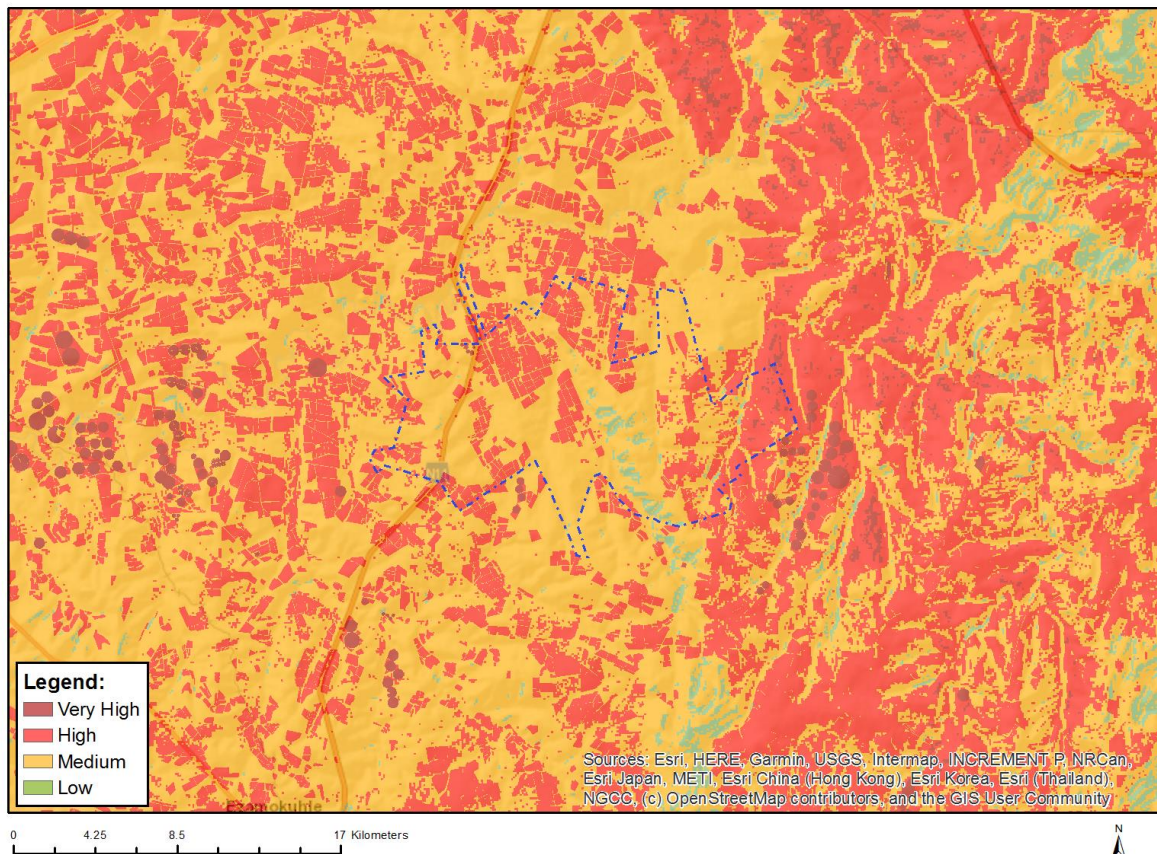
No	Specialist assessment	Assessment Protocol
1	Agricultural Impact Assessment	https://screening.environment.gov.za/ScreeningDownloads/AssessmentProtocols/Gazetted_WindAndSolar_Agriculture_Assessment_Protocols.pdf
2	Landscape/Visual Impact Assessment	https://screening.environment.gov.za/ScreeningDownloads/AssessmentProtocols/Gazetted_General_Requirement_Assessment_Protocols.pdf
3	Archaeological and Cultural Heritage Impact Assessment	https://screening.environment.gov.za/ScreeningDownloads/AssessmentProtocols/Gazetted_General_Requirement_Assessment_Protocols.pdf
4	Palaeontology Impact Assessment	https://screening.environment.gov.za/ScreeningDownloads/AssessmentProtocols/Gazetted_General_Requirement_Assessment_Protocols.pdf
5	Terrestrial Biodiversity Impact Assessment	https://screening.environment.gov.za/ScreeningDownloads/AssessmentProtocols/Gazetted_Terrestrial_Biodiversity_Assessment_Protocols.pdf
6	Aquatic Biodiversity Impact Assessment	https://screening.environment.gov.za/ScreeningDownloads/AssessmentProtocols/Gazetted_Aquatic_Biodiversity_Assessment_Protocols.pdf
7	Avian Impact Assessment	https://screening.environment.gov.za/ScreeningDownloads/AssessmentProtocols/Gazetted_Avifauna_Assessment_Protocols.pdf

8	Civil Aviation Assessment	https://screening.environment.gov.za/ScreeningDownloads/AssessmentProtocols/Gazetted Civil Aviation Installations Assessment Protocols.pdf
9	Defense Assessment	https://screening.environment.gov.za/ScreeningDownloads/AssessmentProtocols/Gazetted Defence Installations Assessment Protocols.pdf
10	RFI Assessment	https://screening.environment.gov.za/ScreeningDownloads/AssessmentProtocols/Gazetted General Requirement Assessment Protocols.pdf
11	Noise Impact Assessment	https://screening.environment.gov.za/ScreeningDownloads/AssessmentProtocols/Gazetted Noise Impacts Assessment Protocol.pdf
12	Flicker Assessment	https://screening.environment.gov.za/ScreeningDownloads/AssessmentProtocols/Gazetted General Requirement Assessment Protocols.pdf
13	Traffic Impact Assessment	https://screening.environment.gov.za/ScreeningDownloads/AssessmentProtocols/Gazetted General Requirement Assessment Protocols.pdf
14	Geotechnical Assessment	https://screening.environment.gov.za/ScreeningDownloads/AssessmentProtocols/Gazetted General Requirement Assessment Protocols.pdf
15	Socio-Economic Assessment	https://screening.environment.gov.za/ScreeningDownloads/AssessmentProtocols/Gazetted General Requirement Assessment Protocols.pdf
16	Plant Species Assessment	https://screening.environment.gov.za/ScreeningDownloads/AssessmentProtocols/Gazetted Plant Species Assessment Protocols.pdf
17	Animal Species Assessment	https://screening.environment.gov.za/ScreeningDownloads/AssessmentProtocols/Gazetted Animal Species Assessment Protocols.pdf

Results of the environmental sensitivity of the proposed area.

The following section represents the results of the screening for environmental sensitivity of the proposed site for relevant environmental themes associated with the project classification. It is the duty of the EAP to ensure that the environmental themes provided by the screening tool are comprehensive and complete for the project. Refer to the disclaimer.

MAP OF RELATIVE AGRICULTURE THEME SENSITIVITY



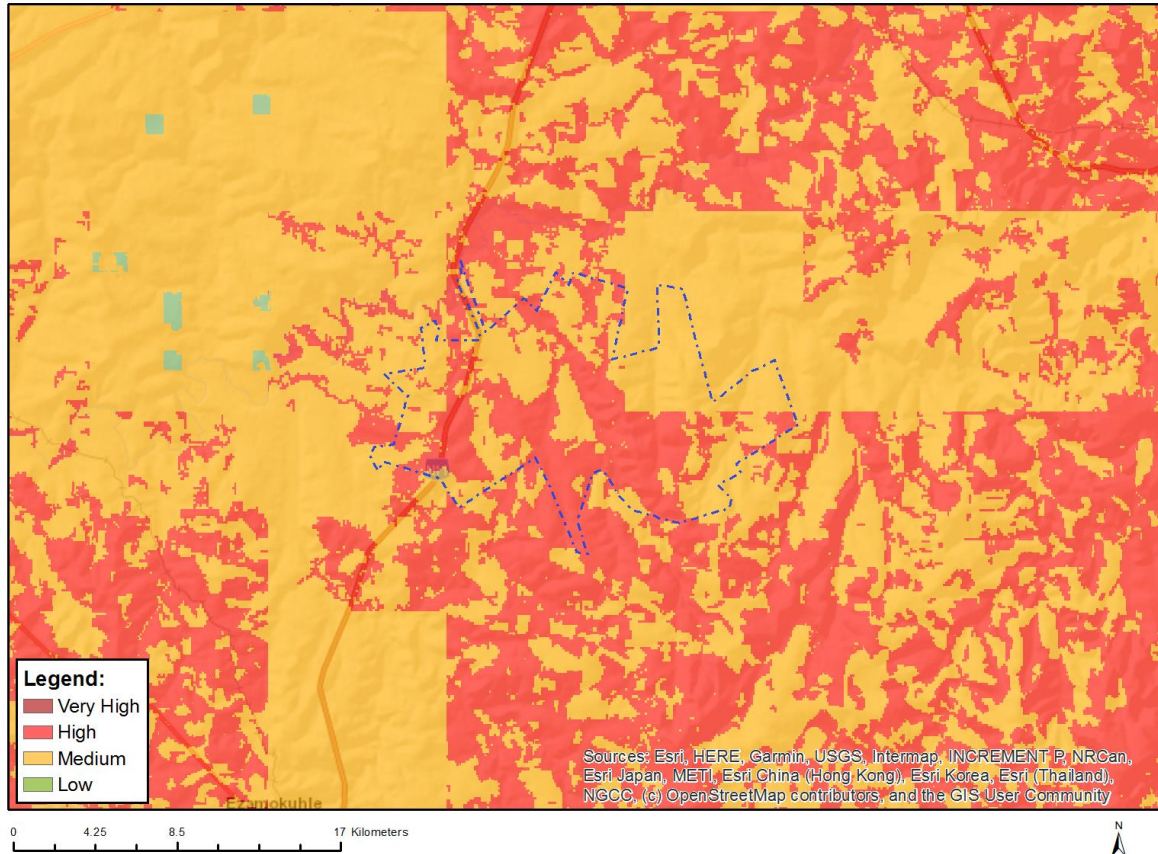
Very High sensitivity	High sensitivity	Medium sensitivity	Low sensitivity
X			

Sensitivity Features:

Sensitivity	Feature(s)
High	Land capability;09. Moderate-High/10. Moderate-High
High	Annual Crop Cultivation / Planted Pastures Rotation;Land capability;09. Moderate-High/10. Moderate-High
High	Annual Crop Cultivation / Planted Pastures Rotation;Land capability;06. Low-Moderate/07. Low-Moderate/08. Moderate
High	Old Fields;Land capability;06. Low-Moderate/07. Low-Moderate/08. Moderate
High	Old Fields;Land capability;09. Moderate-High/10. Moderate-High
High	Annual Crop Cultivation / Planted Pastures Rotation;Land capability;01. Very low/02. Very low/03. Low-Very low/04. Low-Very low/05. Low
High	Old Fields;Land capability;01. Very low/02. Very low/03. Low-Very low/04. Low-Very low/05. Low

Low	Land capability;01. Very low/02. Very low/03. Low-Very low/04. Low-Very low/05. Low
Medium	Land capability;06. Low-Moderate/07. Low-Moderate/08. Moderate
Very High	Land capability;11. High/12. High-Very high/13. High-Very high/14. Very high/15. Very high
Very High	Pivot Irrigation;Land capability;06. Low-Moderate/07. Low-Moderate/08. Moderate
Very High	Annual Crop Cultivation / Planted Pastures Rotation;Land capability;11. High/12. High-Very high/13. High-Very high/14. Very high/15. Very high

MAP OF RELATIVE ANIMAL SPECIES THEME SENSITIVITY



Where only a sensitive plant unique number or sensitive animal unique number is provided in the screening report and an assessment is required, the environmental assessment practitioner (EAP) or specialist is required to email SANBI at aiadatarequests@sanbi.org.za listing all sensitive species with their unique identifiers for which information is required. The name has been withheld as the species may be prone to illegal harvesting and must be protected. SANBI will release the actual species name after the details of the EAP or specialist have been documented.

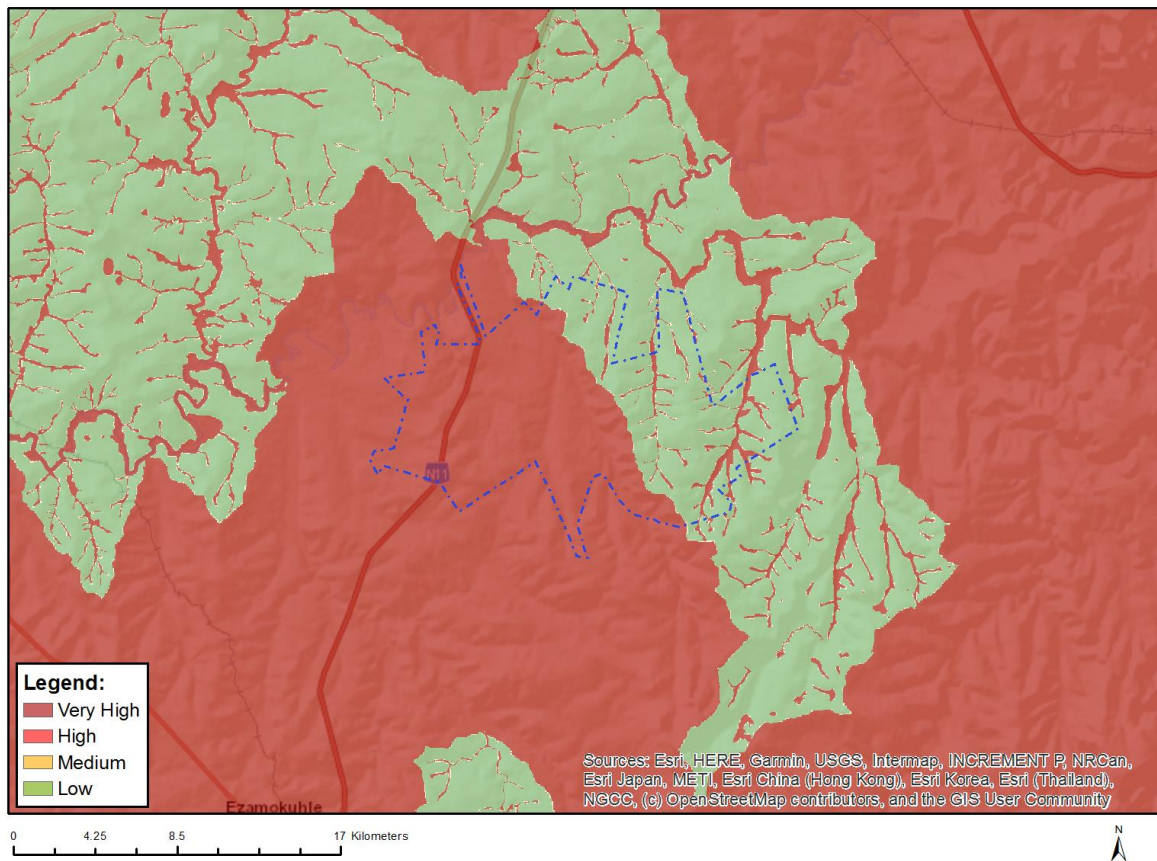
Very High sensitivity	High sensitivity	Medium sensitivity	Low sensitivity
	X		

Sensitivity Features:

Sensitivity	Feature(s)
High	Aves-Balearica regulorum
High	Aves-Geronticus calvus
High	Aves-Sagittarius serpentarius
Medium	Aves-Hydroprogne caspia
Medium	Aves-Neotis denhami
Medium	Aves-Balearica regulorum

Medium	Aves-Geronticus calvus
Medium	Aves-Eupodotis senegalensis
Medium	Aves-Sagittarius serpentarius
Medium	Sensitive species 23
Medium	Aves-Tyto capensis
Medium	Insecta-Lepidochrysops procera
Medium	Mammalia-Chrysospalax villosus
Medium	Mammalia-Crocidura maquassiensis
Medium	Mammalia-Ourebia ourebi ourebi

MAP OF RELATIVE AQUATIC BIODIVERSITY THEME SENSITIVITY

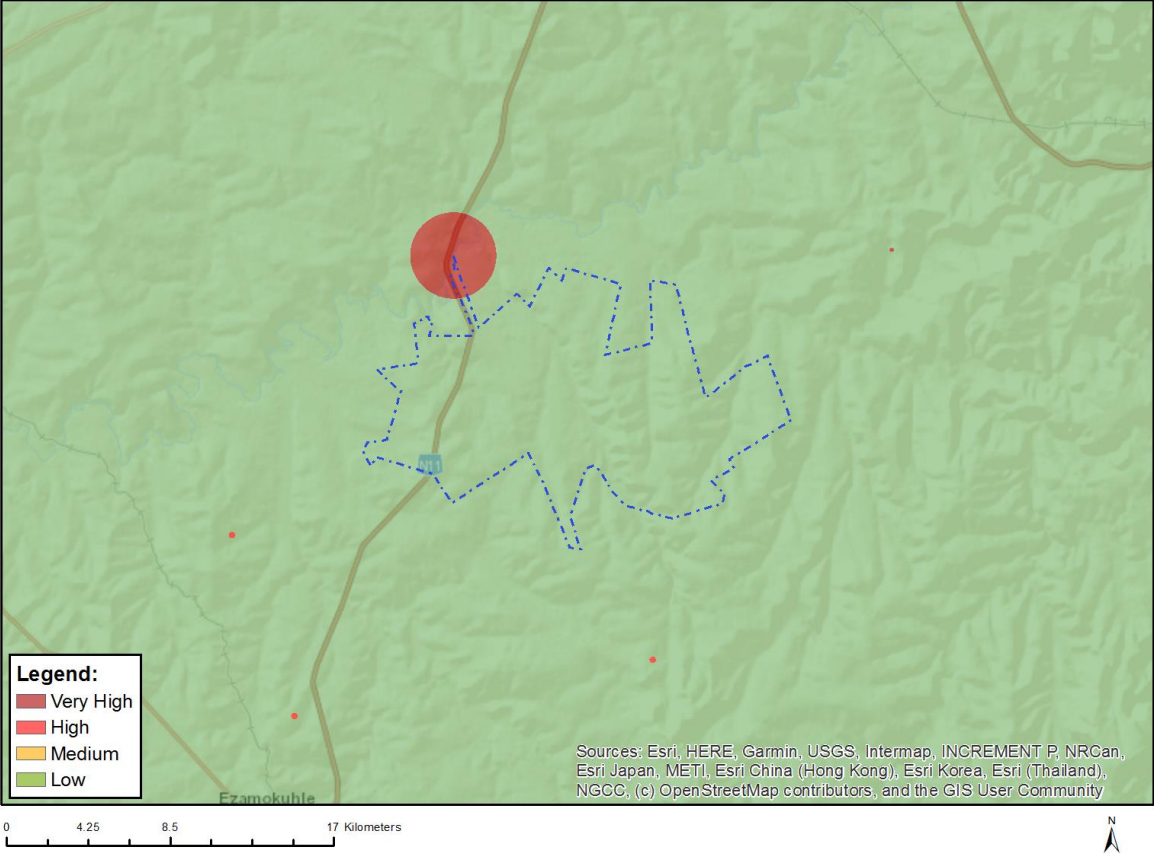


Very High sensitivity	High sensitivity	Medium sensitivity	Low sensitivity
X			

Sensitivity Features:

Sensitivity	Feature(s)
Low	Low sensitivity
Very High	Aquatic CBAs
Very High	Wetlands and Estuaries
Very High	Freshwater ecosystem priority area quinary catchments

MAP OF RELATIVE ARCHAEOLOGICAL AND CULTURAL HERITAGE THEME SENSITIVITY

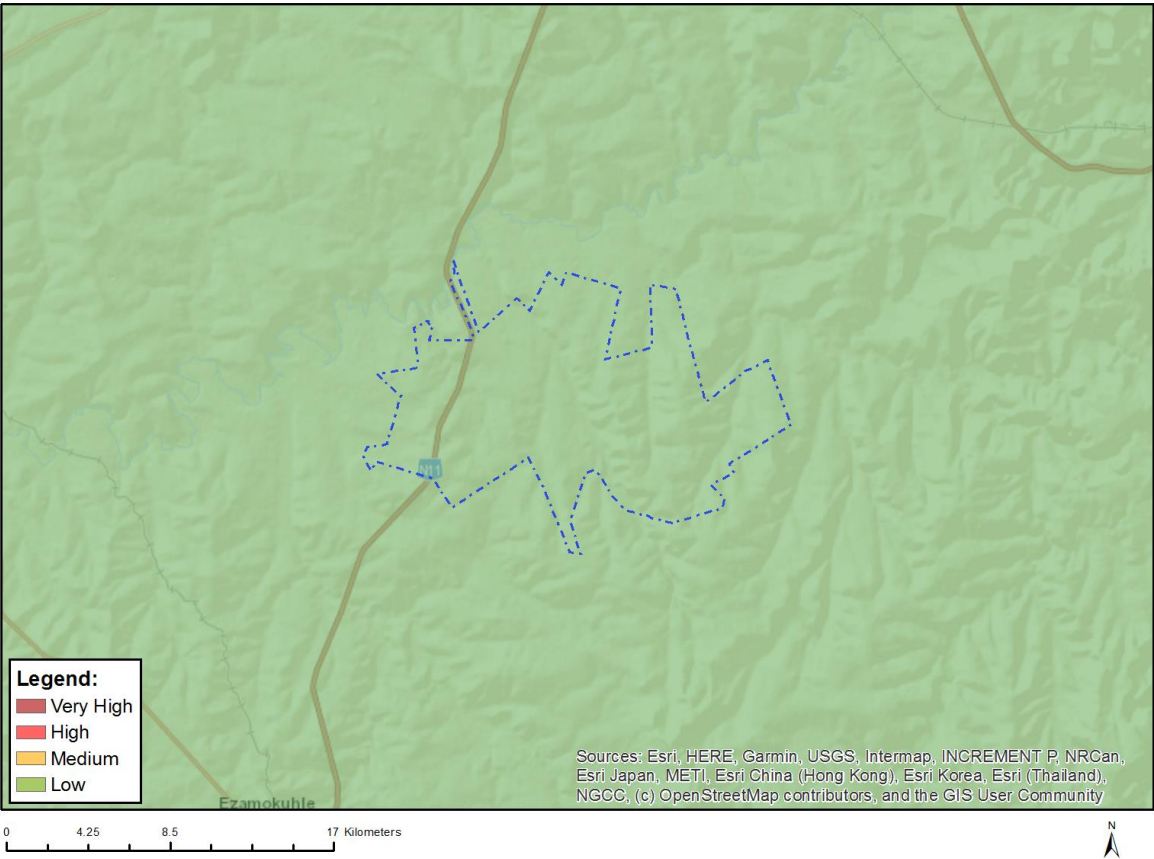


Very High sensitivity	High sensitivity	Medium sensitivity	Low sensitivity
X			

Sensitivity Features:

Sensitivity	Feature(s)
Low	Low sensitivity
Very High	Within 2km of a Grade II Heritage site

MAP OF RELATIVE AVIAN (WIND) THEME SENSITIVITY

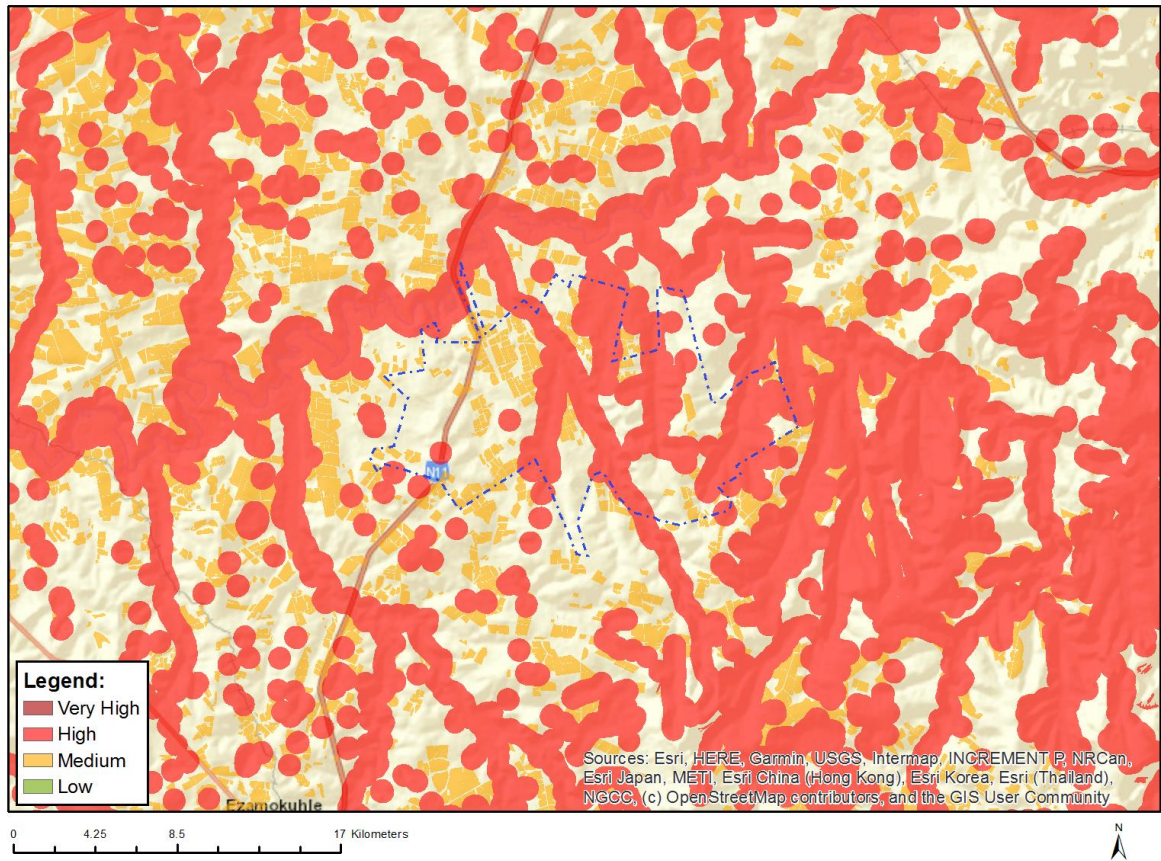


Very High sensitivity	High sensitivity	Medium sensitivity	Low sensitivity
			X

Sensitivity Features:

Sensitivity	Feature(s)
Low	Area Outside Sensitivities

MAP OF RELATIVE BATS (WIND) THEME SENSITIVITY

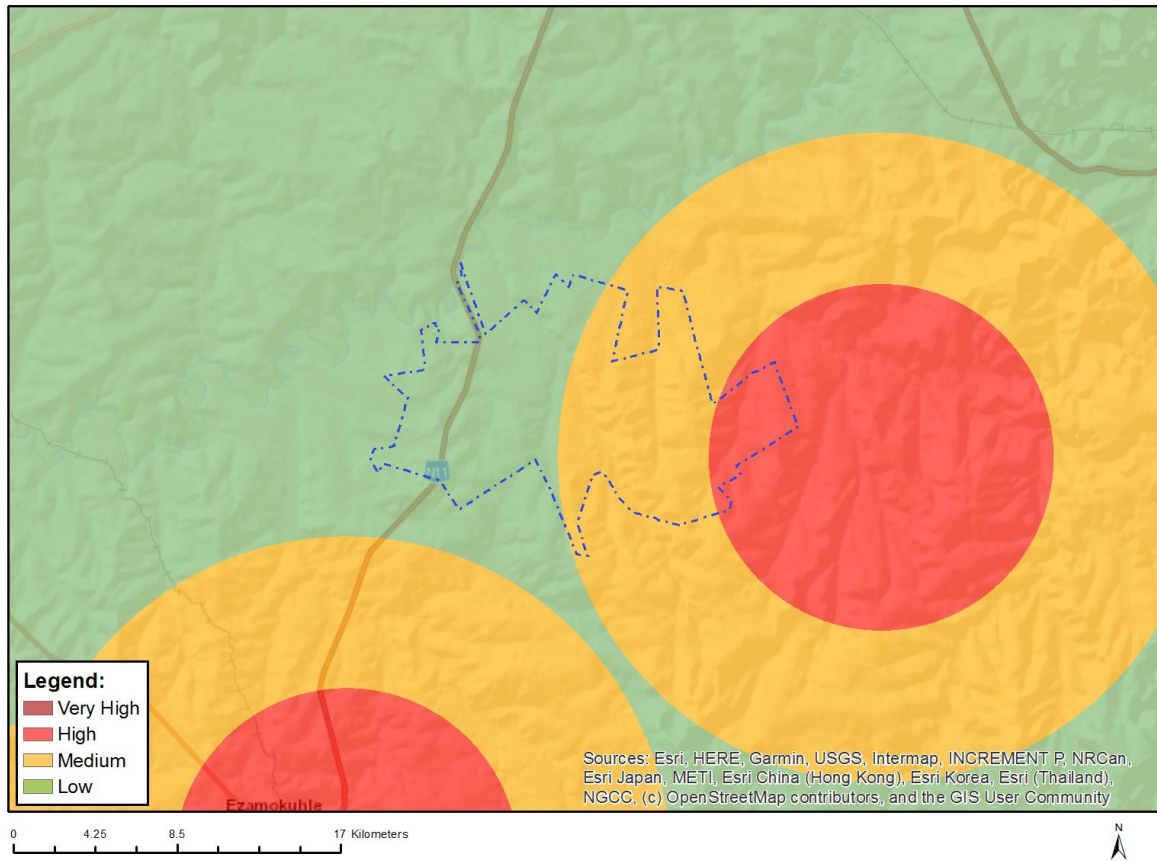


Very High sensitivity	High sensitivity	Medium sensitivity	Low sensitivity
	X		

Sensitivity Features:

Sensitivity	Feature(s)
High	Within 500 m of a river
High	Wetland
High	Within 500 m of a wetland
Medium	Croplands

MAP OF RELATIVE CIVIL AVIATION (WIND) THEME SENSITIVITY

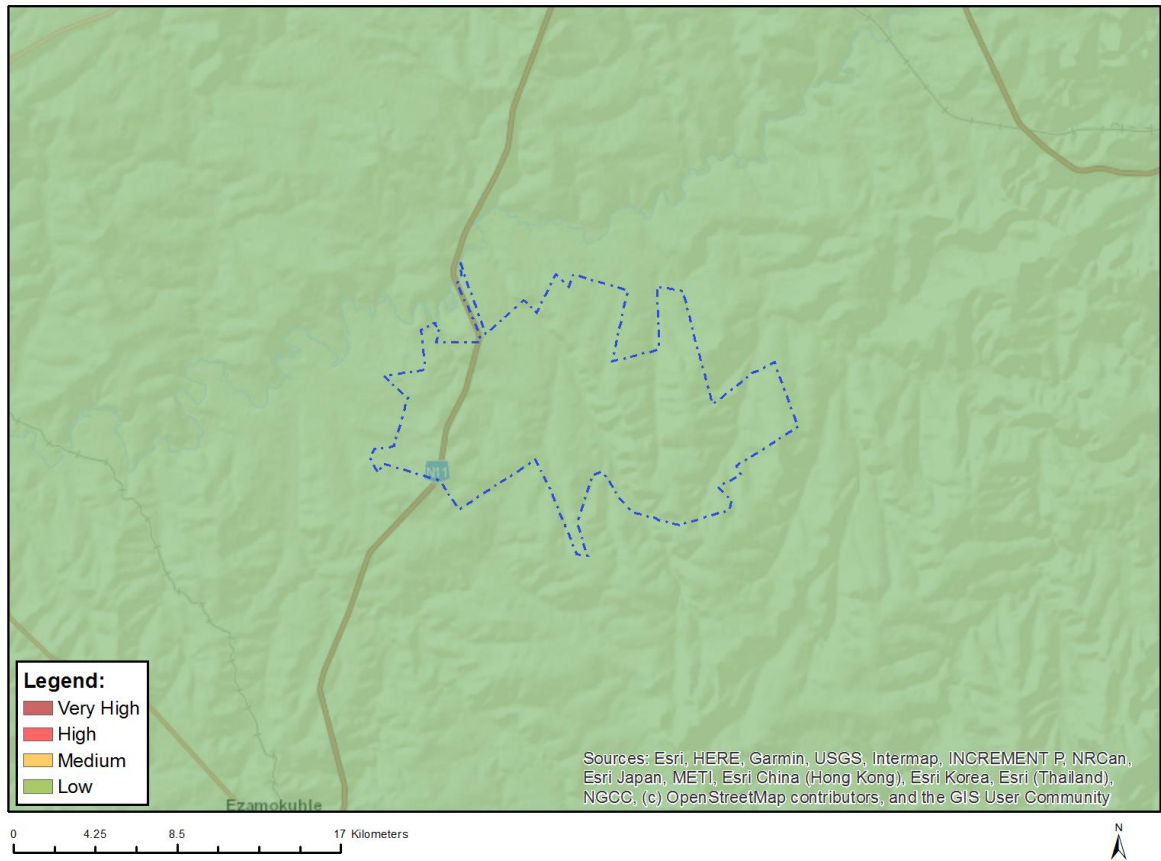


Very High sensitivity	High sensitivity	Medium sensitivity	Low sensitivity
	X		

Sensitivity Features:

Sensitivity	Feature(s)
High	Within 8 km of other civil aviation aerodrome
Low	Low sensitivity
Medium	Between 8 and 15 km of other civil aviation aerodrome

MAP OF RELATIVE DEFENCE (WIND) THEME SENSITIVITY

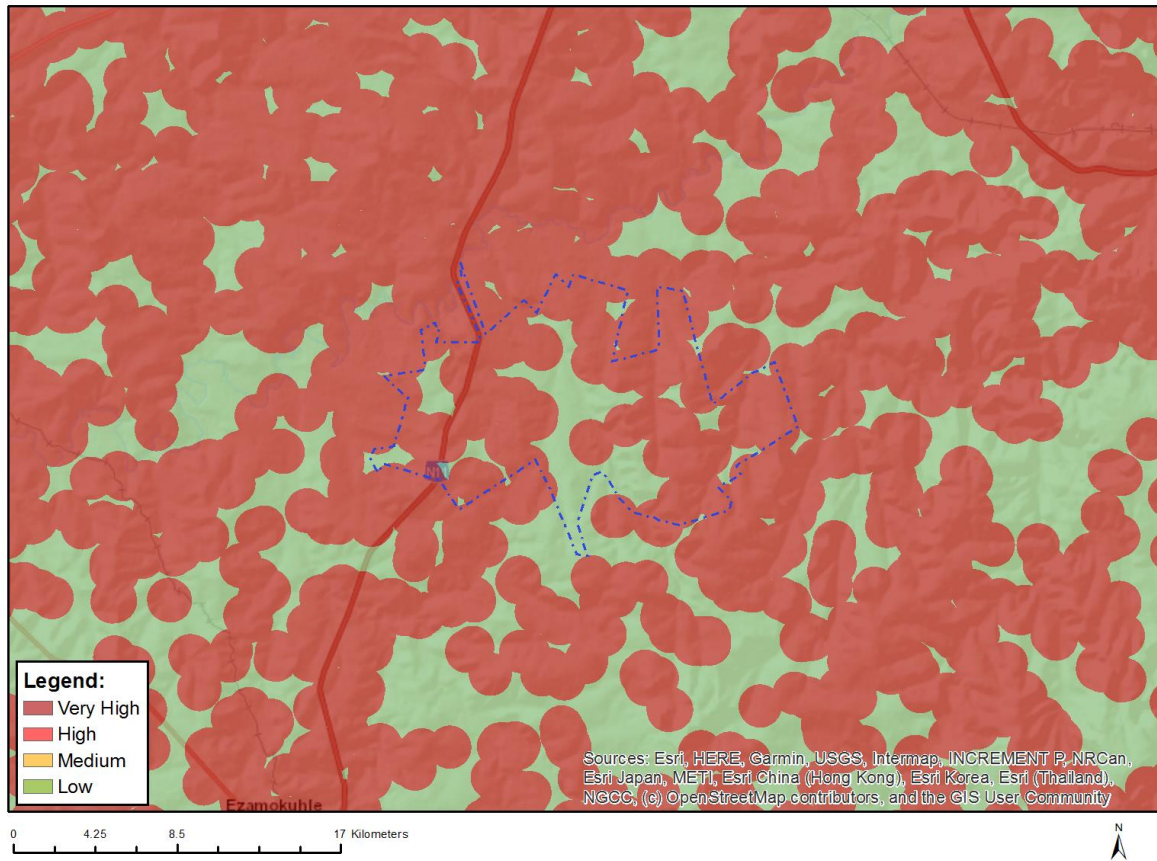


Very High sensitivity	High sensitivity	Medium sensitivity	Low sensitivity
			X

Sensitivity Features:

Sensitivity	Feature(s)
Low	Low sensitivity

MAP OF RELATIVE FLICKER THEME SENSITIVITY

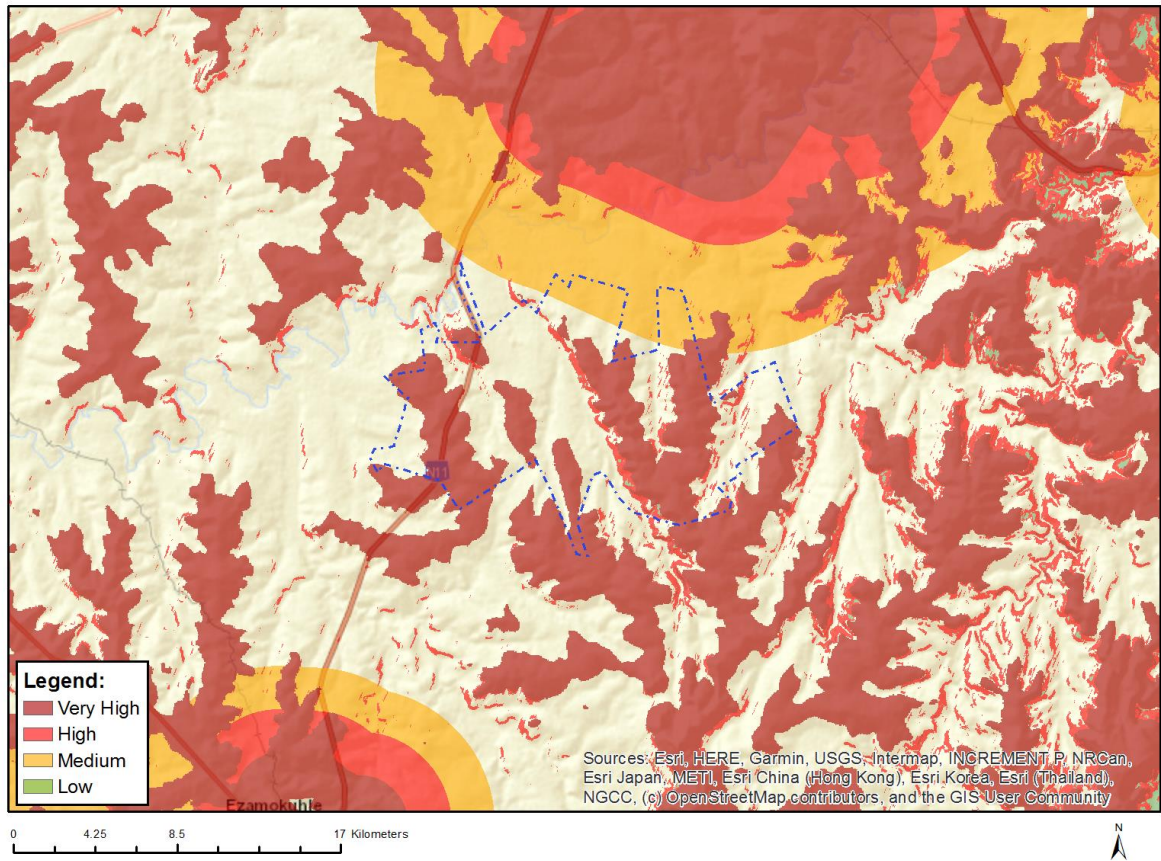


Very High sensitivity	High sensitivity	Medium sensitivity	Low sensitivity
X			

Sensitivity Features:

Sensitivity	Feature(s)
Low	Area of low sensitivity
Very High	Potential temporarily or permanently inhabited residence

MAP OF RELATIVE LANDSCAPE (WIND) THEME SENSITIVITY

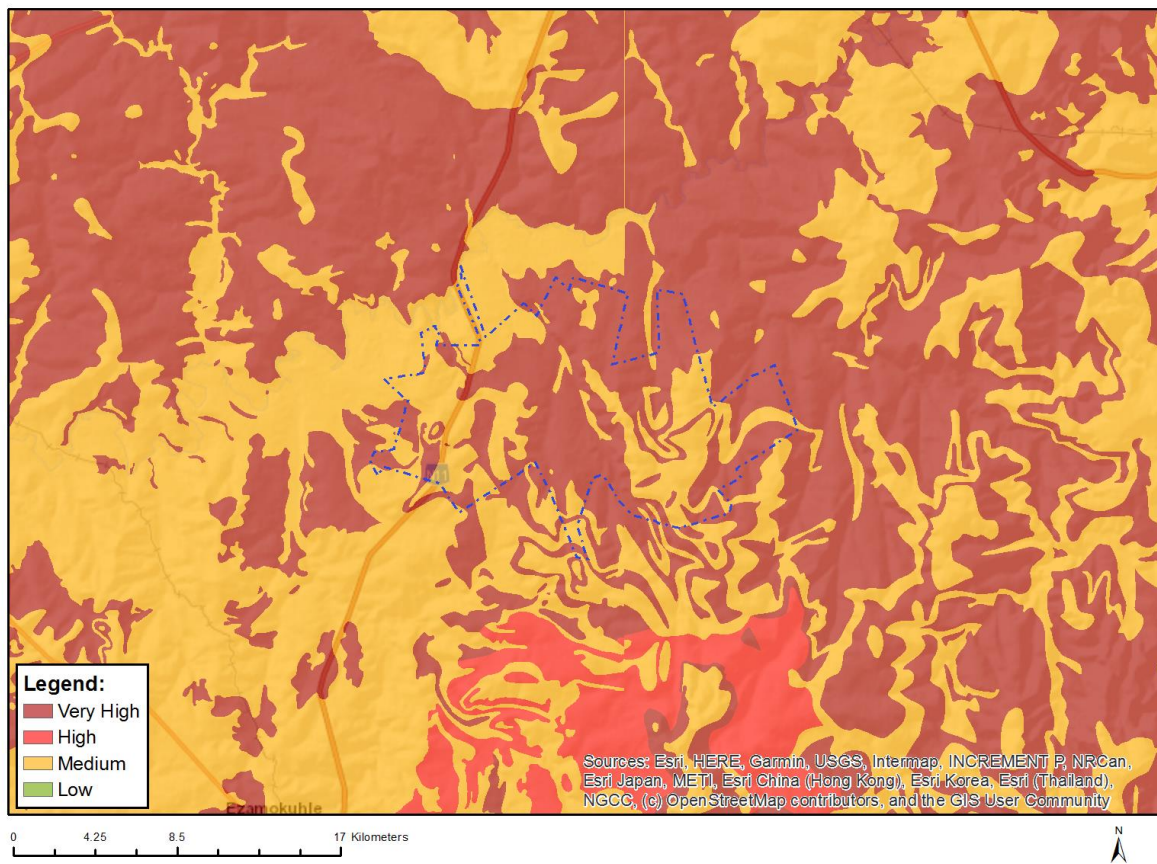


Very High sensitivity	High sensitivity	Medium sensitivity	Low sensitivity
X			

Sensitivity Features:

Sensitivity	Feature(s)
High	Slope between 1:4 and 1:10
Low	Slope less than 1:10
Medium	Between 5 and 10 km of a nature reserve, botanical garden or other protected area
Very High	Mountain tops and high ridges
Very High	Slope more than 1:4

MAP OF RELATIVE PALEONTOLOGY THEME SENSITIVITY

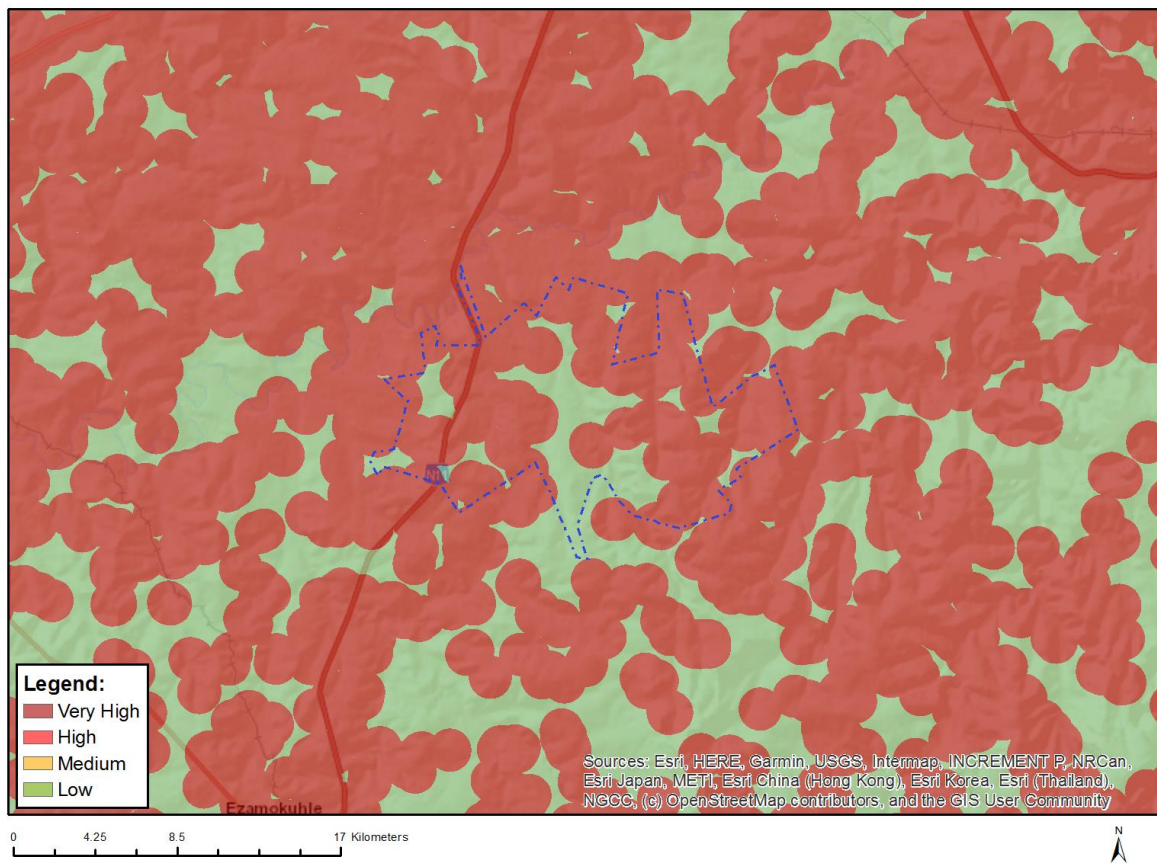


Very High sensitivity	High sensitivity	Medium sensitivity	Low sensitivity
X			

Sensitivity Features:

Sensitivity	Feature(s)
Medium	Features with a Medium paleontological sensitivity
Very High	Features with a Very High paleontological sensitivity

MAP OF RELATIVE NOISE THEME SENSITIVITY

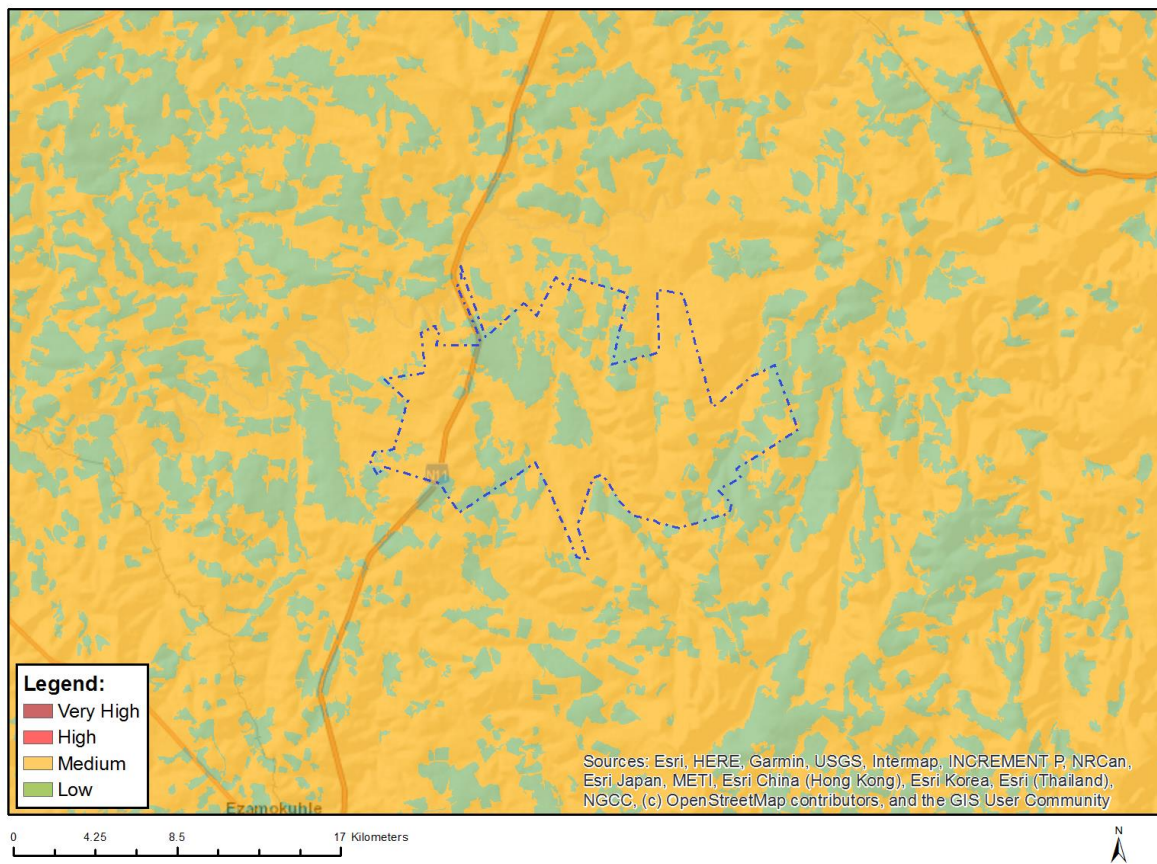


Very High sensitivity	High sensitivity	Medium sensitivity	Low sensitivity
X			

Sensitivity Features:

Sensitivity	Feature(s)
Low	Area of low sensitivity
Very High	Potential temporarily or permanently inhabited residence

MAP OF RELATIVE PLANT SPECIES THEME SENSITIVITY



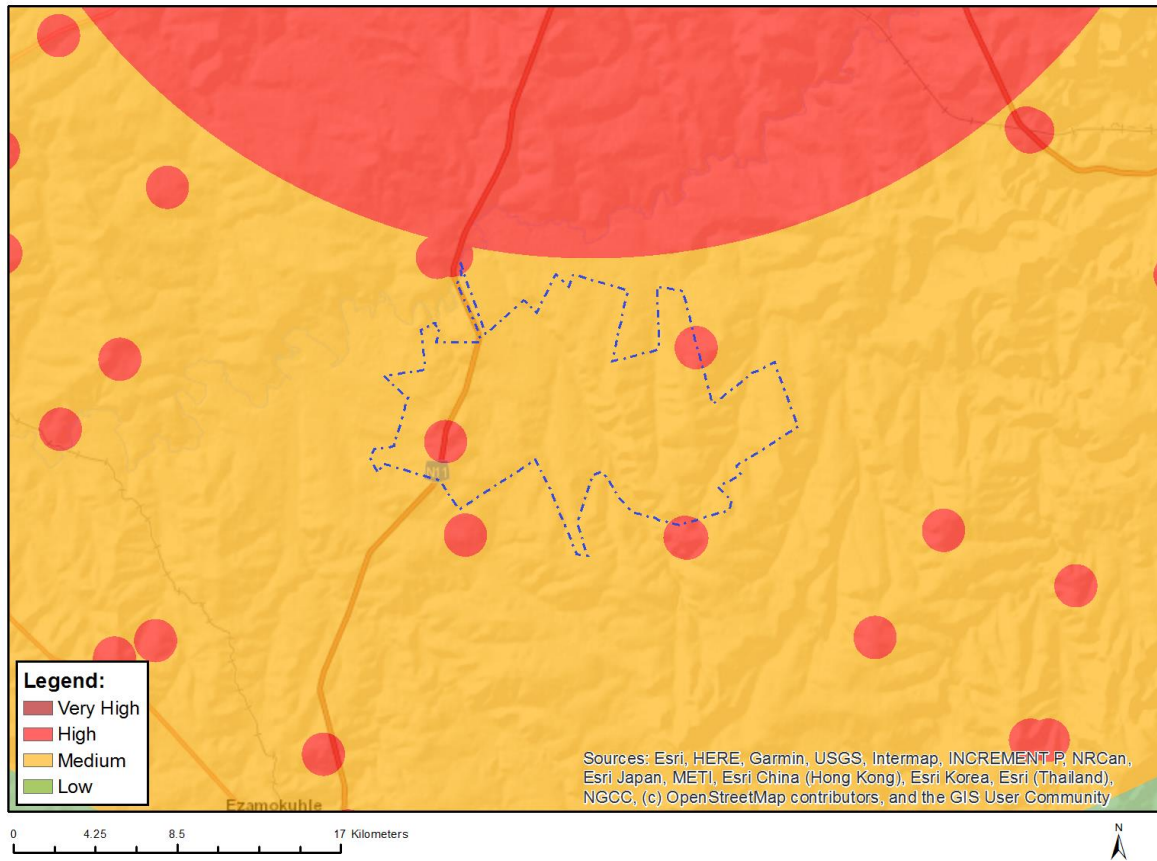
Where only a sensitive plant unique number or sensitive animal unique number is provided in the screening report and an assessment is required, the environmental assessment practitioner (EAP) or specialist is required to email SANBI at eiadatarequests@sanbi.org.za listing all sensitive species with their unique identifiers for which information is required. The name has been withheld as the species may be prone to illegal harvesting and must be protected. SANBI will release the actual species name after the details of the EAP or specialist have been documented.

Very High sensitivity	High sensitivity	Medium sensitivity	Low sensitivity
		X	

Sensitivity Features:

Sensitivity	Feature(s)
Low	Low Sensitivity
Medium	Sensitive species 1252
Medium	Sensitive species 314
Medium	Aspidoglossum xanthosphaerum
Medium	Sensitive species 41
Medium	Sensitive species 691
Medium	Sensitive species 998
Medium	Sensitive species 321
Medium	Sensitive species 851
Medium	Zaluzianskya distans

MAP OF RELATIVE RFI (WIND) THEME SENSITIVITY

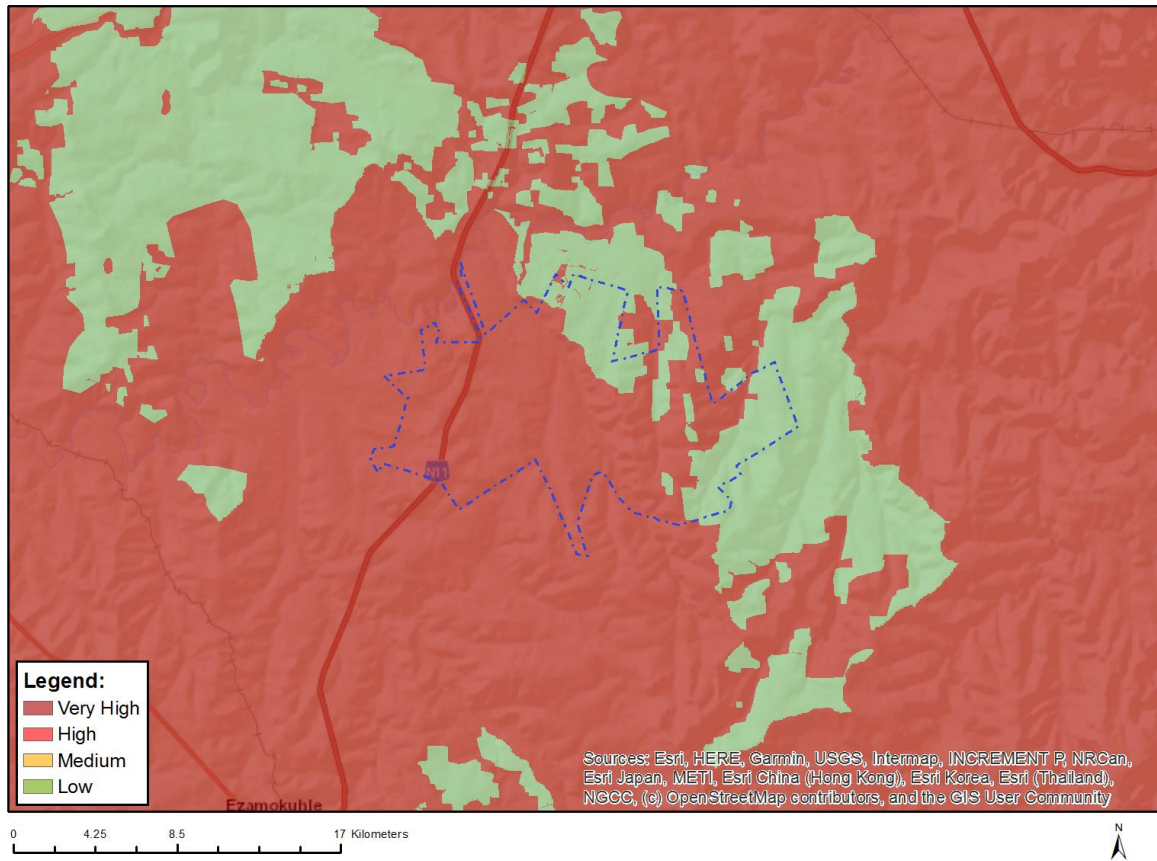


Very High sensitivity	High sensitivity	Medium sensitivity	Low sensitivity
	X		

Sensitivity Features:

Sensitivity	Feature(s)
High	Within 1 km of a telecommunication facility;None;Between 30 and 60 km from a Weather Radar installation and within the radar's line of sight
Medium	Low sensitivity for telecommunications;None;Between 30 and 60 km from a Weather Radar installation and within the radar's line of sight

MAP OF RELATIVE TERRESTRIAL BIODIVERSITY THEME SENSITIVITY



Very High sensitivity	High sensitivity	Medium sensitivity	Low sensitivity
X			

Sensitivity Features:

Sensitivity	Feature(s)
Low	Low Sensitivity
Very High	Critical biodiversity area 1
Very High	Critical biodiversity area 2
Very High	Ecological support area: local corridor
Very High	FEPA Subcatchments
Very High	Protected Areas Expansion Strategy
Very High	Vulnerable ecosystem