

**SCREENING REPORT FOR AN ENVIRONMENTAL AUTHORIZATION AS
REQUIRED BY THE 2014 EIA REGULATIONS – PROPOSED SITE
ENVIRONMENTAL SENSITIVITY**

EIA Reference number: To be allocated

Project name: Hendrina South Grid

Project title: Hendrina South Grid

Date screening report generated: 31/01/2023 08:58:47

Applicant: ENERTRAG South Africa (Pty) Ltd

Compiler: SiVEST

Compiler signature:

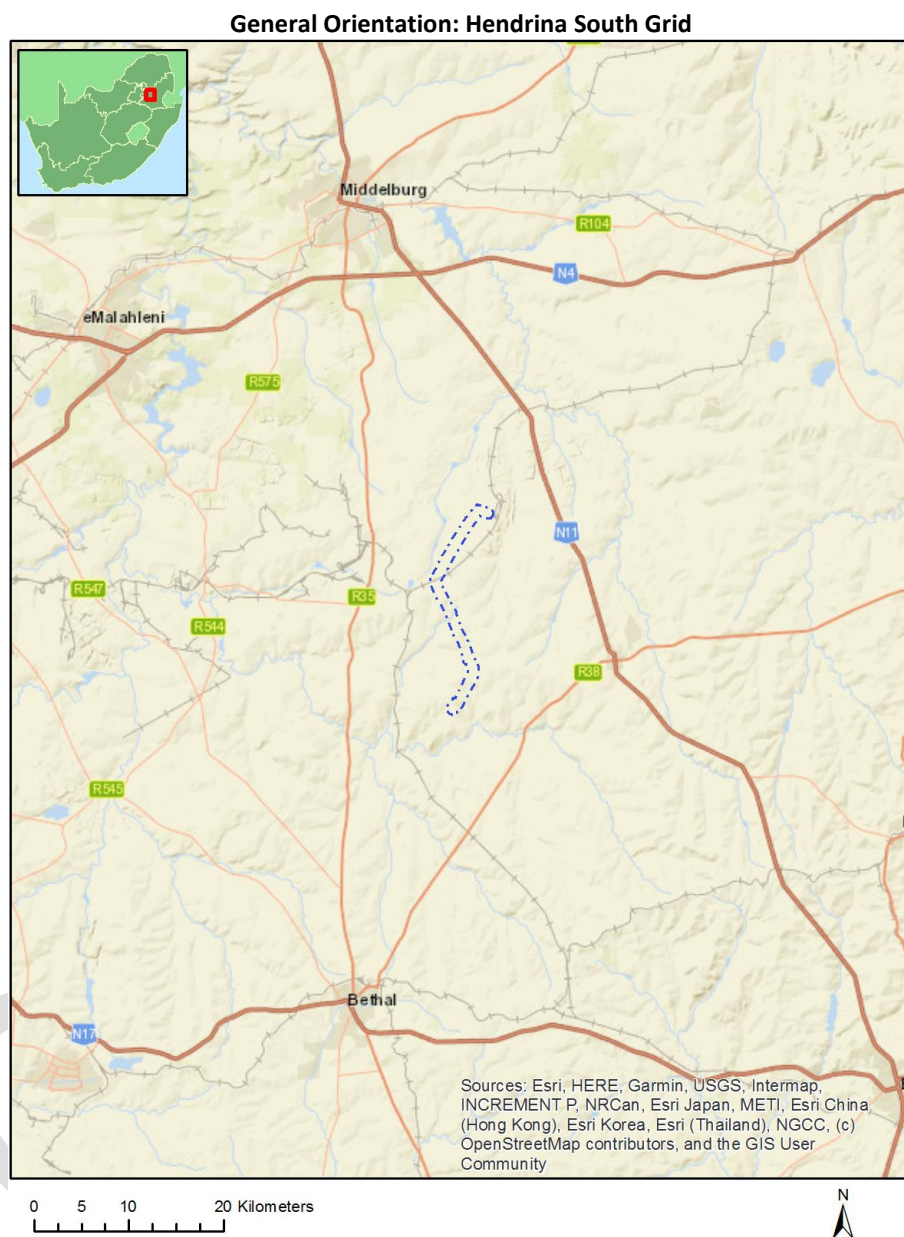
Application Category: Utilities Infrastructure|Electricity|Distribution and Transmission|Powerline

Table of Contents

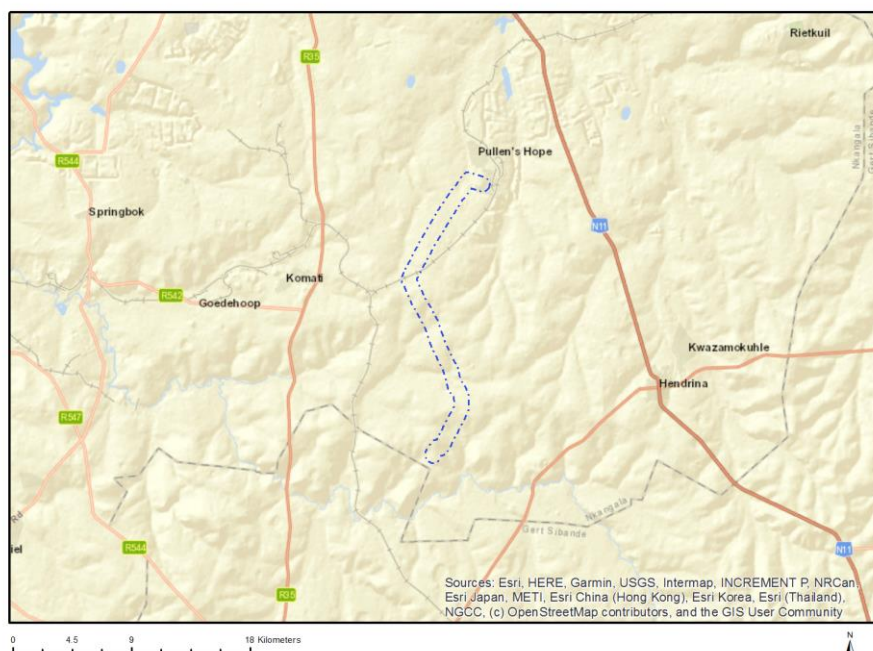
Proposed Project Location	3
Orientation map 1: General location	3
Map of proposed site and relevant area(s)	4
Cadastral details of the proposed site	4
Wind and Solar developments with an approved Environmental Authorisation or applications under consideration within 30 km of the proposed area	5
Environmental Management Frameworks relevant to the application	6
Environmental screening results and assessment outcomes	6
Relevant development incentives, restrictions, exclusions or prohibitions	6
Map indicating proposed development footprint within applicable development incentive, restriction, exclusion or prohibition zones	8
Proposed Development Area Environmental Sensitivity	8
Specialist assessments identified	9
Results of the environmental sensitivity of the proposed area	11
MAP OF RELATIVE AGRICULTURE THEME SENSITIVITY	11
MAP OF RELATIVE ANIMAL SPECIES THEME SENSITIVITY	12
MAP OF RELATIVE AQUATIC BIODIVERSITY THEME SENSITIVITY	13
MAP OF RELATIVE ARCHAEOLOGICAL AND CULTURAL HERITAGE THEME SENSITIVITY	14
MAP OF RELATIVE CIVIL AVIATION THEME SENSITIVITY	15
MAP OF RELATIVE DEFENCE THEME SENSITIVITY	16
MAP OF RELATIVE PALEONTOLOGY THEME SENSITIVITY	17
MAP OF RELATIVE PLANT SPECIES THEME SENSITIVITY	18
MAP OF RELATIVE TERRESTRIAL BIODIVERSITY THEME SENSITIVITY	19

Proposed Project Location

Orientation map 1: General location



Map of proposed site and relevant area(s)



Cadastral details of the proposed site

Property details:

No	Farm Name	Farm/ Erf No	Portion	Latitude	Longitude	Property Type
1	HARTEBEESTKUIL	185	0	26°9'1.67S	29°33'33.9E	Farm
2	HENDRINA POWER STATION	162	0	26°1'55.13S	29°35'50.09E	Farm
3	GLORIA	186	0	26°7'30.69S	29°32'56.2E	Farm
4	DUNBAR	189	0	26°10'44.16S	29°32'23.68E	Farm
5	BOSCHMANSKOP	154	0	26°3'44.68S	29°36'20.32E	Farm
6	ROODEPOORT	151	0	26°1'28.18S	29°33'3.62E	Farm
7	ABERDEEN	158	0	26°4'40.7S	29°32'22.57E	Farm
8	WELTEVREDEN	193	0	26°13'11.63S	29°34'35.21E	Farm
9	DRIEFONTEIN	153	0	26°5'50.81S	29°34'37.38E	Farm
10	UITGEZOCHT	194	0	26°9'58.73S	29°36'2.37E	Farm
11	DRIEFONTEIN	153	41	26°5'13.1S	29°33'10.81E	Farm Portion
12	DRIEFONTEIN	153	13	26°6'28.74S	29°32'36.86E	Farm Portion
13	DRIEFONTEIN	153	33	26°6'9.44S	29°32'54.55E	Farm Portion
14	DRIEFONTEIN	153	29	26°4'13.47S	29°34'8.31E	Farm Portion
15	BOSCHMANSKOP	154	7	26°3'2.98S	29°34'50.57E	Farm Portion
16	UITGEZOCHT	194	4	26°9'10.36S	29°35'35.67E	Farm Portion
17	ROODEPOORT	151	13	26°2'52.54S	29°34'1.16E	Farm Portion
18	DRIEFONTEIN	153	32	26°7'12.14S	29°33'44.68E	Farm Portion
19	HARTEBEESTKUIL	185	2	26°8'56.7S	29°32'49.3E	Farm Portion
20	DUNBAR	189	3	26°11'59.3S	29°33'22.31E	Farm Portion
21	WELTEVREDEN	193	14	26°11'9.16S	29°35'18.23E	Farm Portion
22	DRIEFONTEIN	153	30	26°4'48.62S	29°34'2.74E	Farm Portion
23	ABERDEEN	158	1	26°4'13.21S	29°32'44.33E	Farm Portion
24	GLORIA	186	0	26°7'34.32S	29°32'55.84E	Farm Portion
25	UITGEZOCHT	194	0	26°8'32.8S	29°35'10.54E	Farm Portion
26	ROODEPOORT	151	18	26°1'56.3S	29°34'34.53E	Farm Portion

27	DRIEFONTEIN	153	5	26°7'22.83S	29°34'40.51E	Farm Portion
28	DRIEFONTEIN	153	17	26°6'19.75S	29°33'40.15E	Farm Portion
29	WELTEVREDEN	193	17	26°12'18.48S	29°34'31.6E	Farm Portion
30	ROODEPOORT	151	1	26°2'28S	29°34'25.11E	Farm Portion
31	DRIEFONTEIN	153	38	26°5'19.42S	29°32'57.35E	Farm Portion
32	DRIEFONTEIN	153	2	26°6'57.72S	29°33'42.64E	Farm Portion
33	DRIEFONTEIN	153	37	26°5'27.14S	29°33'28.02E	Farm Portion
34	BOSCHMANSKOP	154	8	26°2'35.9S	29°35'24.69E	Farm Portion
35	BOSCHMANSKOP	154	3	26°3'42.36S	29°34'32.23E	Farm Portion
36	ABERDEEN	158	0	26°5'12.27S	29°31'57.57E	Farm Portion
37	HENDRINA POWER STATION	162	0	26°1'55.13S	29°35'50.09E	Farm Portion
38	HENDRINA POWER STATION	162	10	26°2'17.73S	29°35'33.77E	Farm Portion
39	HENDRINA POWER STATION	162	0	26°1'9.77S	29°35'39.11E	Farm Portion
40	HARTEBEESTKUIL	185	4	26°8'48.79S	29°34'9.94E	Farm Portion
41	DRIEFONTEIN	153	12	26°6'41.32S	29°33'14.09E	Farm Portion
42	DRIEFONTEIN	153	14	26°6'19.2S	29°32'50.1E	Farm Portion
43	HENDRINA POWER STATION	162	11	26°2'6.8S	29°35'53.22E	Farm Portion
44	DUNBAR	189	0	26°10'31.78S	29°33'59.19E	Farm Portion
45	WELTEVREDEN	193	16	26°11'55.92S	29°34'48.18E	Farm Portion
46	WELTEVREDEN	193	18	26°12'43.68S	29°34'16.56E	Farm Portion
47	ROODEPOORT	151	14	26°3'22.7S	29°33'46.18E	Farm Portion
48	DRIEFONTEIN	153	35	26°5'47.83S	29°32'43.76E	Farm Portion
49	DRIEFONTEIN	153	34	26°6'1.72S	29°32'36.33E	Farm Portion
50	HENDRINA POWER STATION	162	9	26°2'12.27S	29°35'36.18E	Farm Portion
51	HARTEBEESTKUIL	185	1	26°8'24.88S	29°34'40.03E	Farm Portion
52	HARTEBEESTKUIL	185	3	26°9'47.34S	29°34'17.1E	Farm Portion
53	DUNBAR	189	1	26°11'25.73S	29°33'30.79E	Farm Portion
54	WELTEVREDEN	193	15	26°11'33.44S	29°35'2.88E	Farm Portion
55	UITGEZOCHT	194	2	26°10'25.62S	29°35'30.87E	Farm Portion

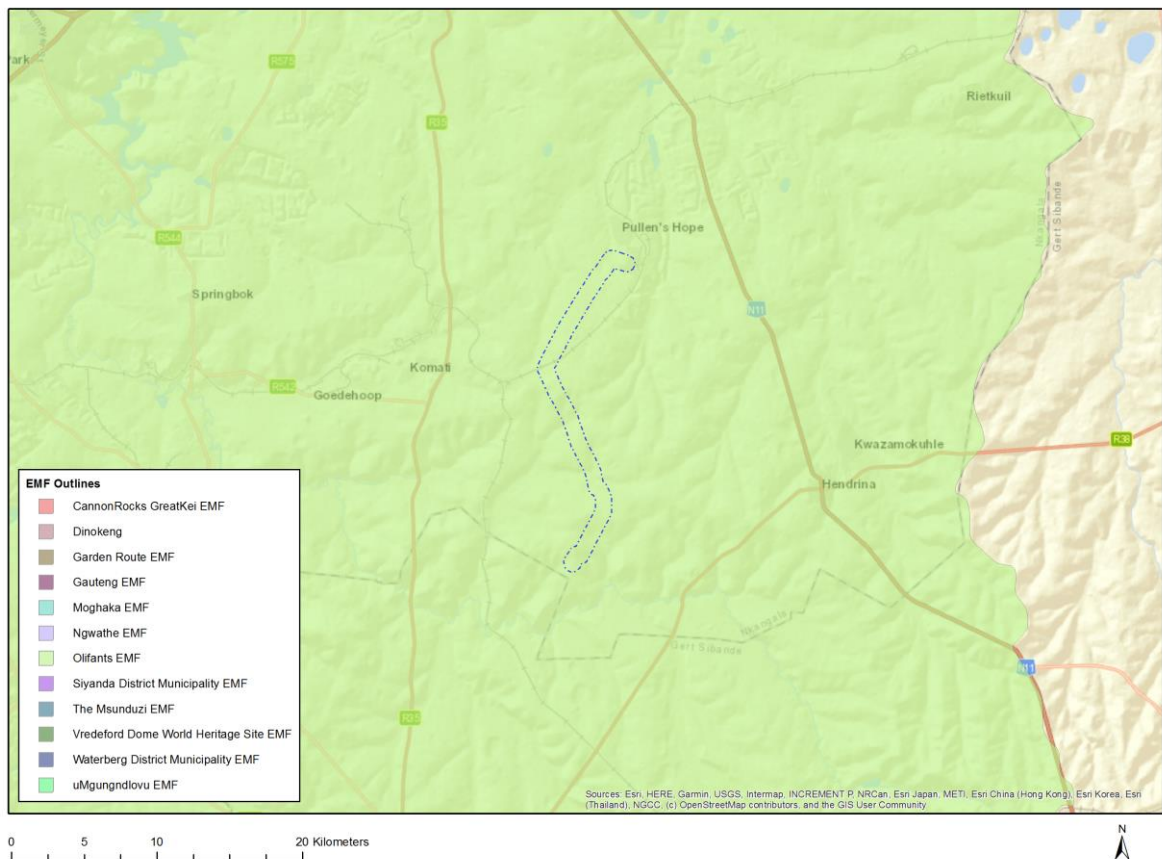
Development footprint¹ vertices:
No development footprint(s) specified.

Wind and Solar developments with an approved Environmental Authorisation or applications under consideration within 30 km of the proposed area

No	EIA Reference No	Classification	Status of application	Distance from proposed area (km)
1	14/12/16/3/3/2/759	Solar PV	Approved	25.3

¹ “development footprint”, means the area within the site on which the development will take place and includes all ancillary developments for example roads, power lines, boundary walls, paving etc. which require vegetation clearance or which will be disturbed and for which the application has been submitted.

Environmental Management Frameworks relevant to the application



Environmental Management Framework	LINK
Olifants EMF	https://screening.environment.gov.za/ScreeningDownloads/EMF/Zone_46, 67, 78, 80, 92, 103, 122, 129.pdf

Environmental screening results and assessment outcomes

The following sections contain a summary of any development incentives, restrictions, exclusions or prohibitions that apply to the proposed development site as well as the most environmental sensitive features on the site based on the site sensitivity screening results for the application classification that was selected. The application classification selected for this report is:

Utilities Infrastructure | Electricity | Distribution and Transmission | Powerline.

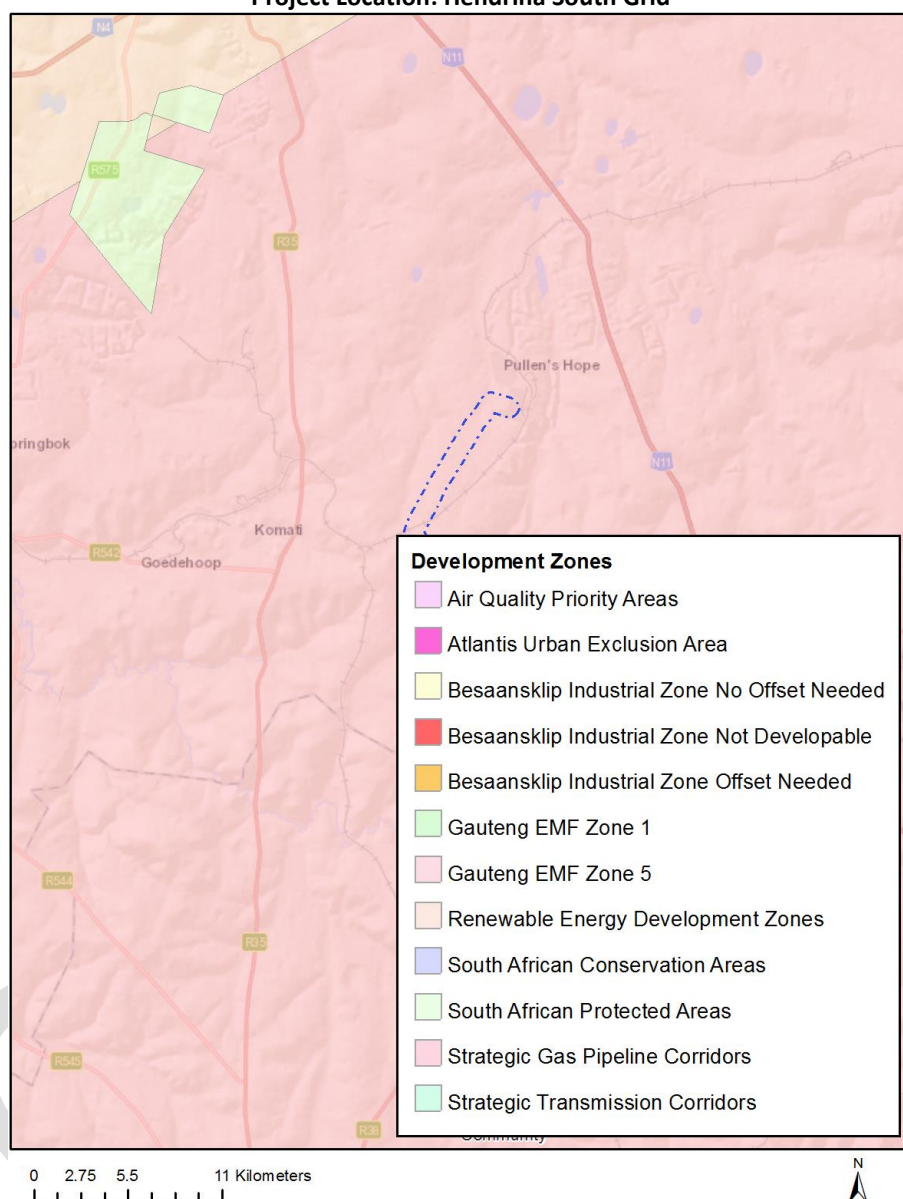
Relevant development incentives, restrictions, exclusions or prohibitions

The following development incentives, restrictions, exclusions or prohibitions and their implications that apply to this site are indicated below.

Incentive, restriction or prohibition	Implication
Air Quality-Highveld Priority Area	https://screening.environment.gov.za/ScreeningDownloads/DevelopmentZones/HIGHVELD_PRIORITY_AREA_AQMP.pdf
Strategic Gas Pipeline Corridors -Phase 8: Rompco Pipeline Corridor	https://screening.environment.gov.za/ScreeningDownloads/DevelopmentZones/Combined_GAS.pdf

Map indicating proposed development footprint within applicable development incentive, restriction, exclusion or prohibition zones

Project Location: Hendrina South Grid



Proposed Development Area Environmental Sensitivity

The following summary of the development site environmental sensitivities is identified. Only the highest environmental sensitivity is indicated. The footprint environmental sensitivities for the proposed development footprint as identified, are indicative only and must be verified on site by a suitably qualified person before the specialist assessments identified below can be confirmed.

Theme	Very High sensitivity	High sensitivity	Medium sensitivity	Low sensitivity
Agriculture Theme	X			
Animal Species Theme			X	

Aquatic Biodiversity Theme	X			
Archaeological and Cultural Heritage Theme		X		
Civil Aviation Theme		X		
Defence Theme				X
Paleontology Theme	X			
Plant Species Theme			X	
Terrestrial Biodiversity Theme	X			

Specialist assessments identified

Based on the selected classification, and the environmental sensitivities of the proposed development footprint, the following list of specialist assessments have been identified for inclusion in the assessment report. It is the responsibility of the EAP to confirm this list and to motivate in the assessment report, the reason for not including any of the identified specialist study including the provision of photographic evidence of the site situation.

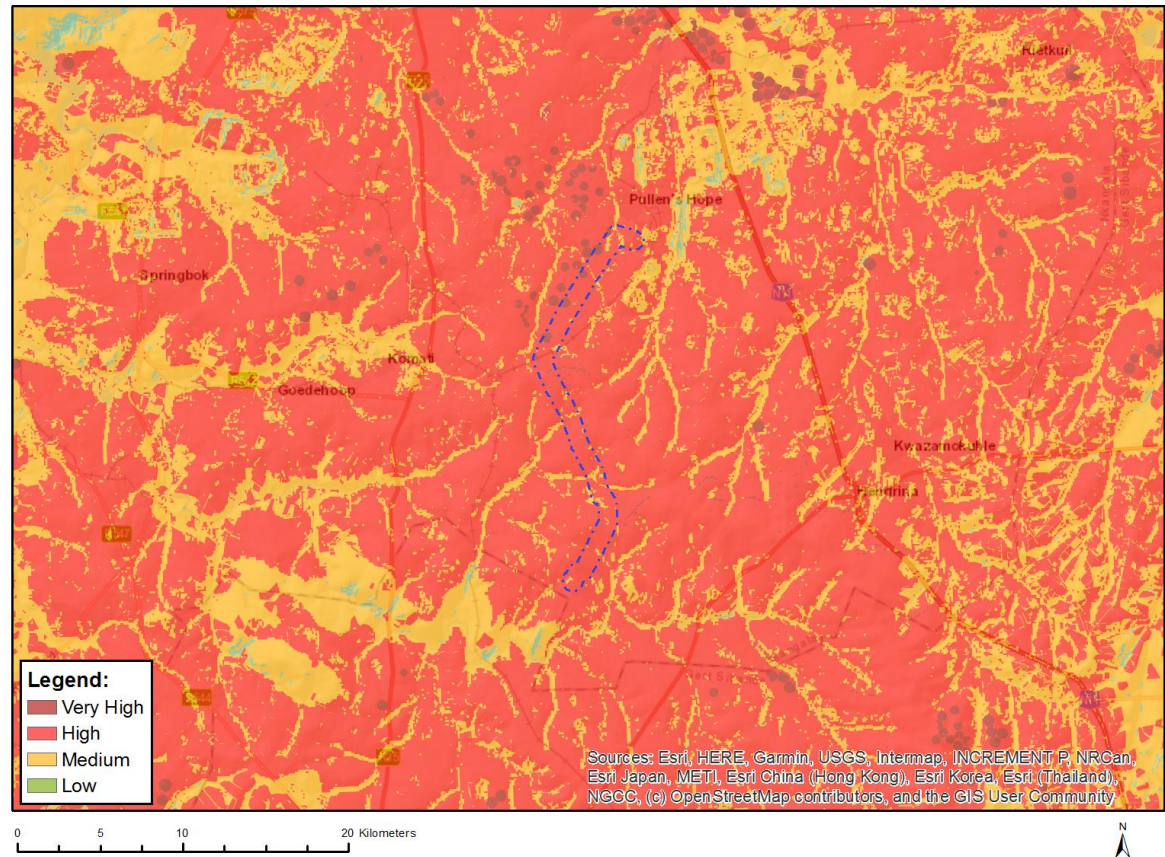
N o	Special ist assess ment	Assessment Protocol
1	Agricultural Impact Assessment	https://screening.environment.gov.za/ScreeningDownloads/AssessmentProtocols/Gazetted_General_Agriculture_Assessment_Protocols.pdf
2	Landscape/Visual Impact Assessment	https://screening.environment.gov.za/ScreeningDownloads/AssessmentProtocols/Gazetted_General_Requirement_Assessment_Protocols.pdf
3	Archaeological and Cultural Heritage Impact Assessment	https://screening.environment.gov.za/ScreeningDownloads/AssessmentProtocols/Gazetted_General_Requirement_Assessment_Protocols.pdf
4	Paleontology Impact Assessment	https://screening.environment.gov.za/ScreeningDownloads/AssessmentProtocols/Gazetted_General_Requirement_Assessment_Protocols.pdf
5	Terrestrial Biodiversity Impact Assessment	https://screening.environment.gov.za/ScreeningDownloads/AssessmentProtocols/Gazetted_Terrestrial_Biodiversity_Assessment_Protocols.pdf
6	Aquatic Biodiversity Impact Assessment	https://screening.environment.gov.za/ScreeningDownloads/AssessmentProtocols/Gazetted_Aquatic_Biodiversity_Assessment_Protocols.pdf

7	Avian Impact Assessment	https://screening.environment.gov.za/ScreeningDownloads/AssessmentProtocols/Gazetted_Avifauna_Assessment_Protocols.pdf
8	Civil Aviation Assessment	https://screening.environment.gov.za/ScreeningDownloads/AssessmentProtocols/Gazetted_Civil_Aviation_Installations_Assessment_Protocols.pdf
9	RFI Assessment	https://screening.environment.gov.za/ScreeningDownloads/AssessmentProtocols/Gazetted_General_Requirement_Assessment_Protocols.pdf
10	Geotechnical Assessment	https://screening.environment.gov.za/ScreeningDownloads/AssessmentProtocols/Gazetted_General_Requirement_Assessment_Protocols.pdf
11	Plant Species Assessment	https://screening.environment.gov.za/ScreeningDownloads/AssessmentProtocols/Gazetted_Plant_Species_Assessment_Protocols.pdf
12	Animal Species Assessment	https://screening.environment.gov.za/ScreeningDownloads/AssessmentProtocols/Gazetted_Animal_Species_Assessment_Protocols.pdf

Results of the environmental sensitivity of the proposed area.

The following section represents the results of the screening for environmental sensitivity of the proposed site for relevant environmental themes associated with the project classification. It is the duty of the EAP to ensure that the environmental themes provided by the screening tool are comprehensive and complete for the project. Refer to the disclaimer.

MAP OF RELATIVE AGRICULTURE THEME SENSITIVITY



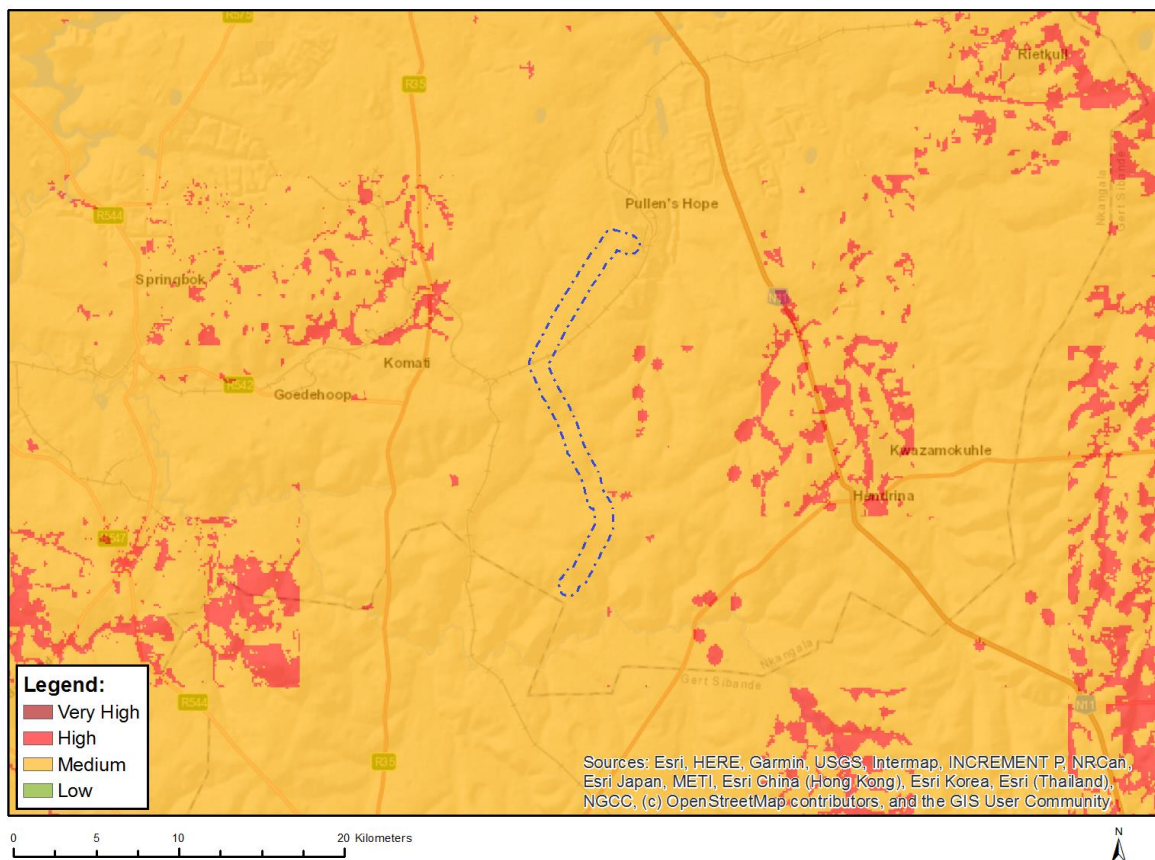
Very High sensitivity	High sensitivity	Medium sensitivity	Low sensitivity
X			

Sensitivity Features:

Sensitivity	Feature(s)
High	Land capability;09. Moderate-High/10. Moderate-High
High	Annual Crop Cultivation / Planted Pastures Rotation;Land capability;06. Low-Moderate/07. Low-Moderate/08. Moderate
High	Annual Crop Cultivation / Planted Pastures Rotation;Land capability;09. Moderate-High/10. Moderate-High
Medium	Land capability;06. Low-Moderate/07. Low-Moderate/08. Moderate
Very High	Land capability;11. High/12. High-Very high/13. High-Very high/14. Very high/15. Very high
Very High	Annual Crop Cultivation / Planted Pastures Rotation;Land capability;11. High/12. High-Very high/13. High-Very high/14. Very high/15. Very high
Very High	Pivot Irrigation;Land capability;09. Moderate-High/10. Moderate-High

Very High	Pivot Irrigation;Land capability;06. Low-Moderate/07. Low-Moderate/08. Moderate
-----------	---

MAP OF RELATIVE ANIMAL SPECIES THEME SENSITIVITY



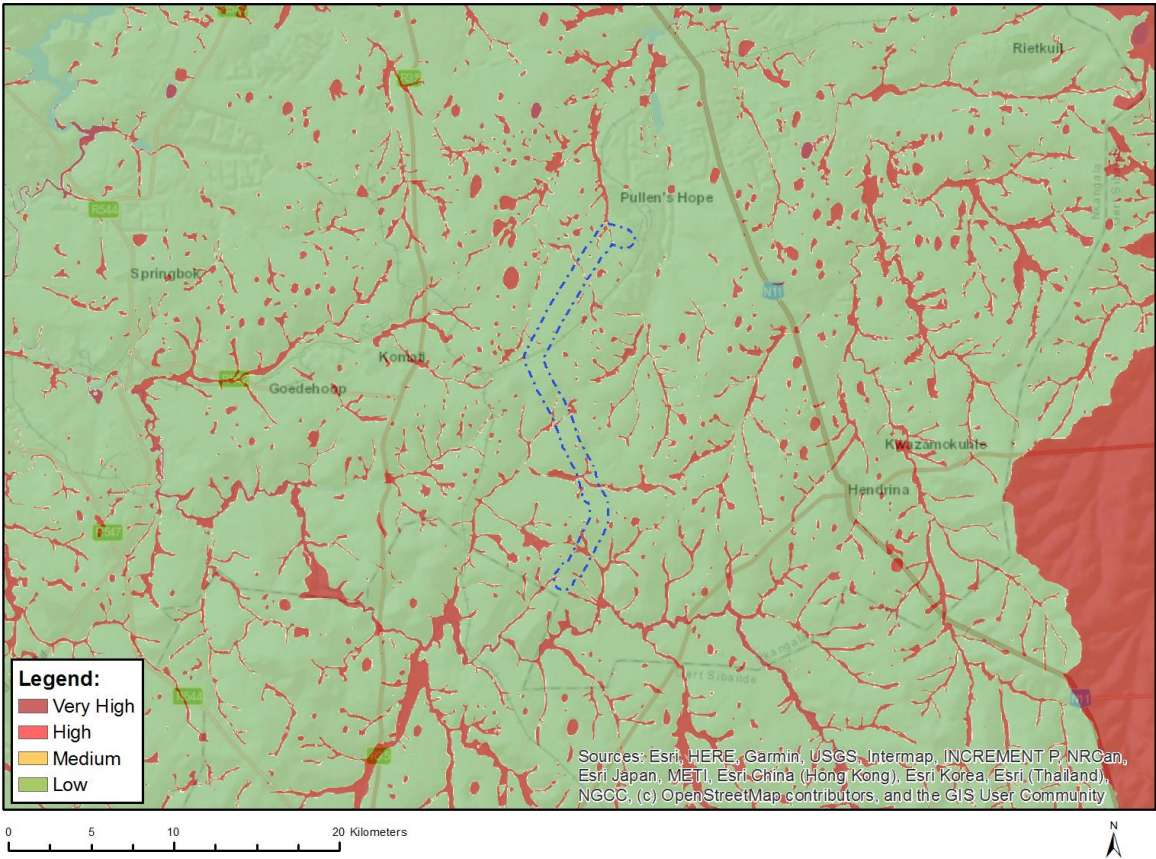
Where only a sensitive plant unique number or sensitive animal unique number is provided in the screening report and an assessment is required, the environmental assessment practitioner (EAP) or specialist is required to email SANBI at eiadatarequests@sanbi.org.za listing all sensitive species with their unique identifiers for which information is required. The name has been withheld as the species may be prone to illegal harvesting and must be protected. SANBI will release the actual species name after the details of the EAP or specialist have been documented.

Very High sensitivity	High sensitivity	Medium sensitivity	Low sensitivity
		X	

Sensitivity Features:

Sensitivity	Feature(s)
Medium	Aves-Hydroprogne caspia
Medium	Aves-Tyto capensis
Medium	Mammalia-Crocidura maquassiensis
Medium	Mammalia-Hydricitis maculicollis
Medium	Mammalia-Ourebia ourebi ourebi

MAP OF RELATIVE AQUATIC BIODIVERSITY THEME SENSITIVITY

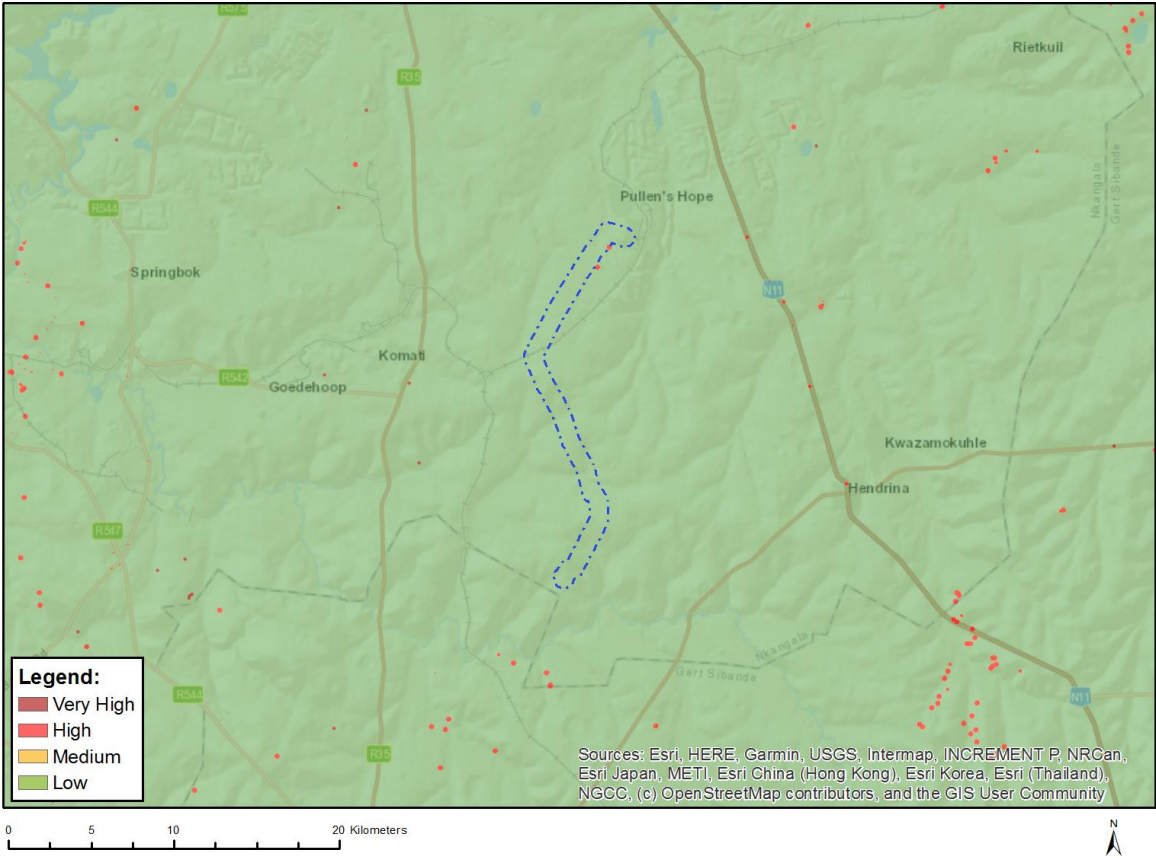


Very High sensitivity	High sensitivity	Medium sensitivity	Low sensitivity
X			

Sensitivity Features:

Sensitivity	Feature(s)
Low	Low sensitivity
Very High	Wetlands and Estuaries

MAP OF RELATIVE ARCHAEOLOGICAL AND CULTURAL HERITAGE THEME SENSITIVITY

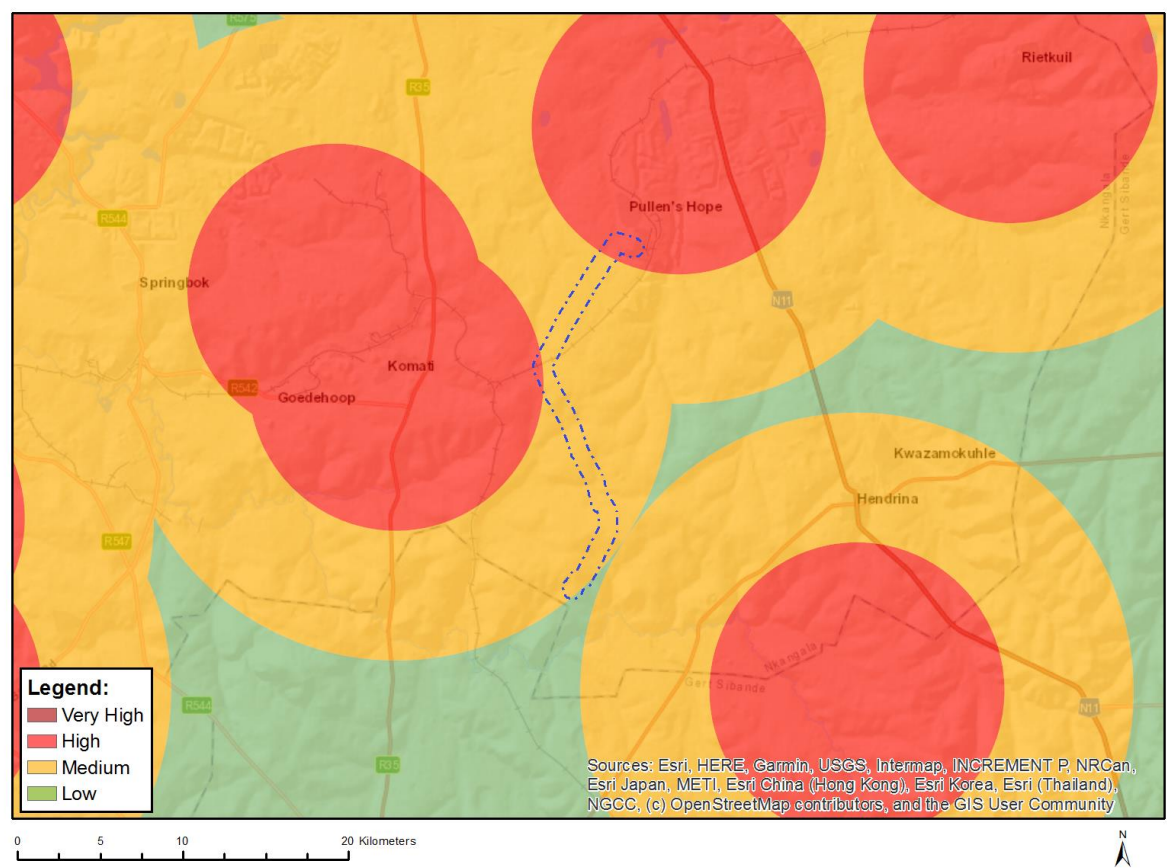


Very High sensitivity	High sensitivity	Medium sensitivity	Low sensitivity
	X		

Sensitivity Features:

Sensitivity	Feature(s)
High	Within 150m of a Grade IIIa Heritage site
Low	Low sensitivity

MAP OF RELATIVE CIVIL AVIATION THEME SENSITIVITY

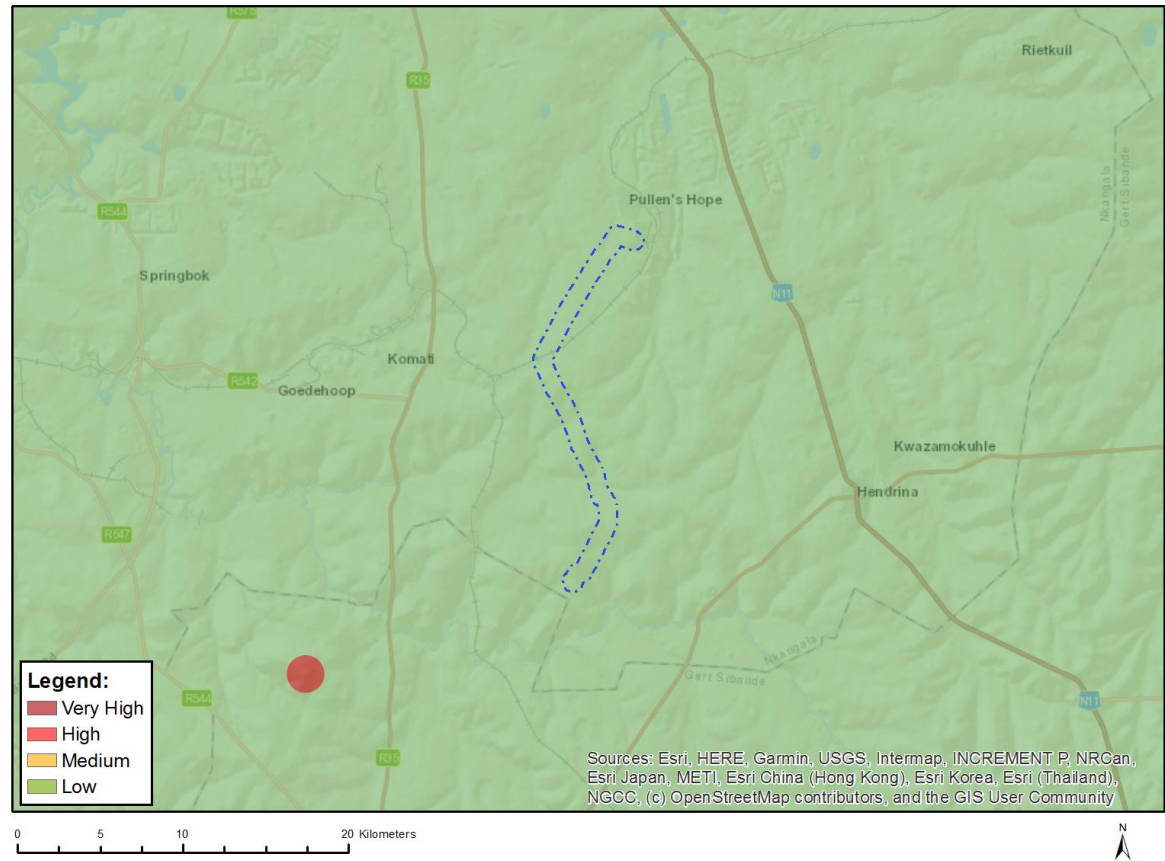


Very High sensitivity	High sensitivity	Medium sensitivity	Low sensitivity
	X		

Sensitivity Features:

Sensitivity	Feature(s)
High	Within 8 km of other civil aviation aerodrome
Low	Low sensitivity
Medium	Between 8 and 15 km of other civil aviation aerodrome

MAP OF RELATIVE DEFENCE THEME SENSITIVITY

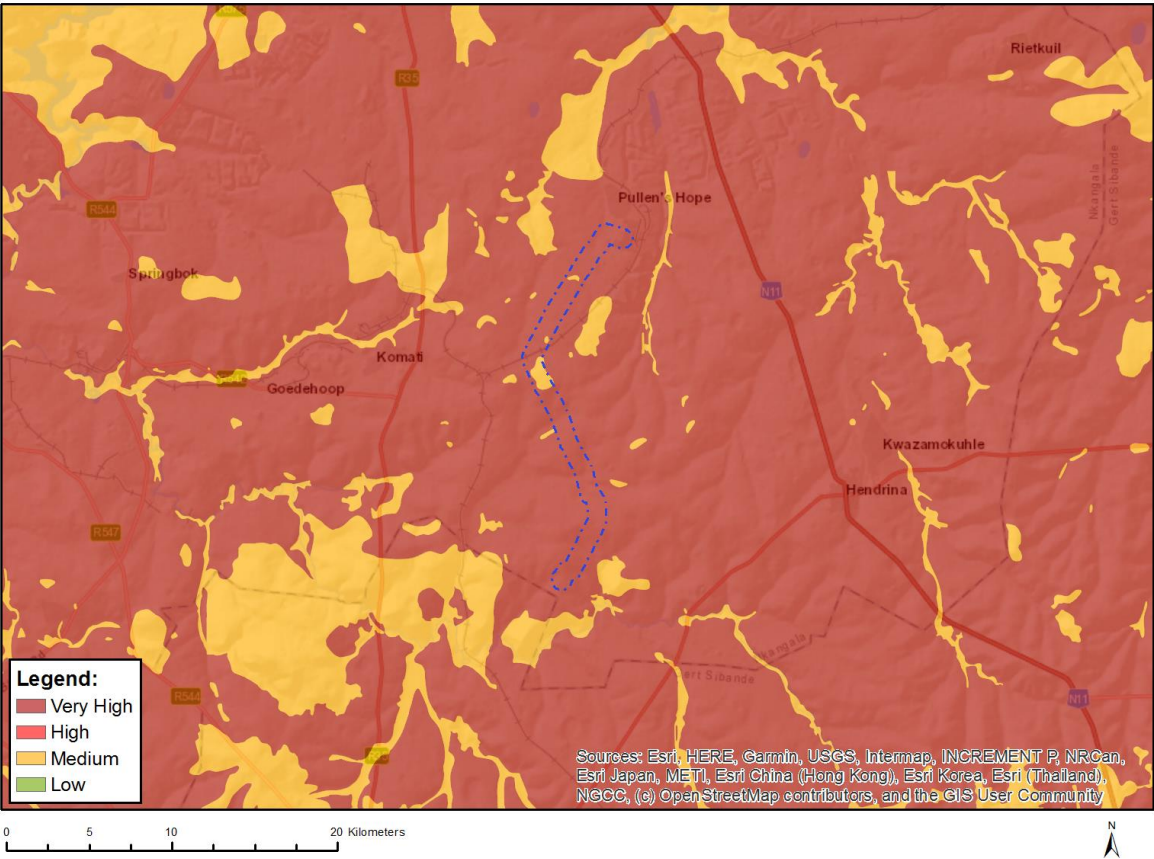


Very High sensitivity	High sensitivity	Medium sensitivity	Low sensitivity
			X

Sensitivity Features:

Sensitivity	Feature(s)
Low	Low Sensitivity

MAP OF RELATIVE PALEONTOLOGY THEME SENSITIVITY

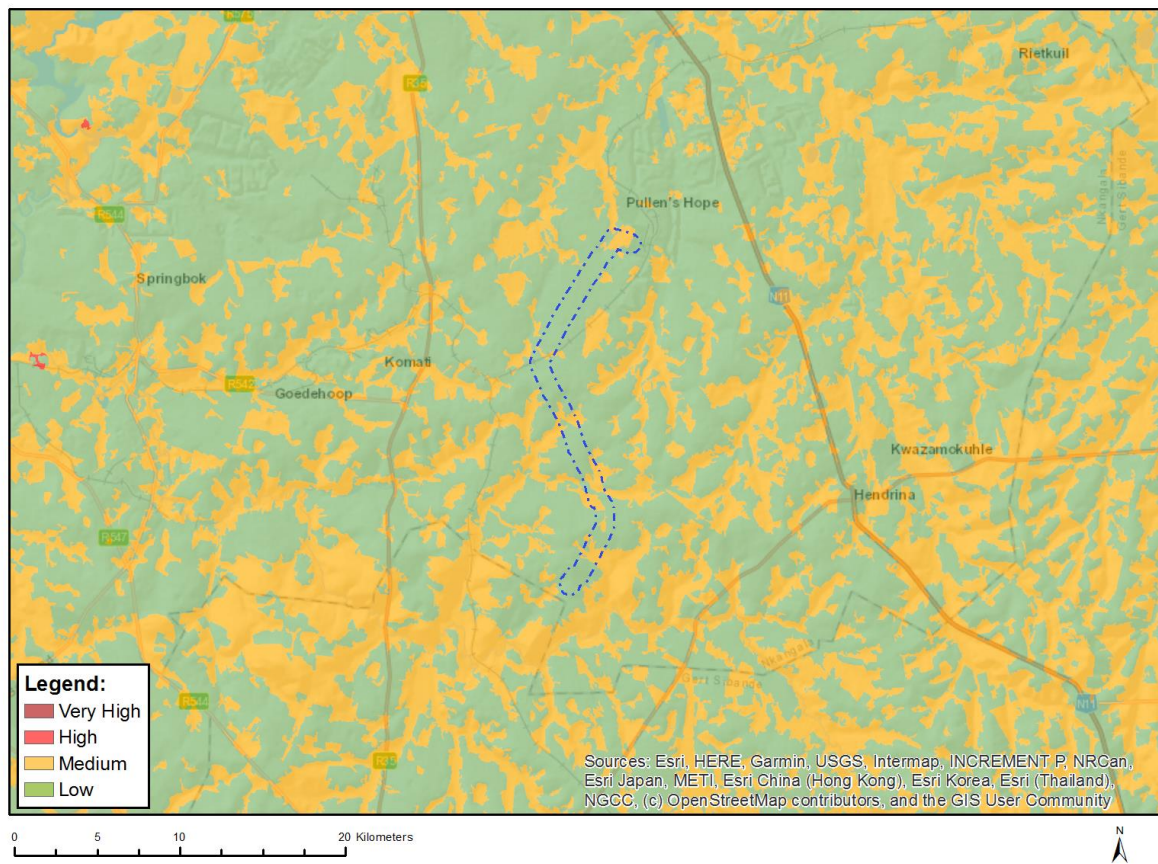


Very High sensitivity	High sensitivity	Medium sensitivity	Low sensitivity
X			

Sensitivity Features:

Sensitivity	Feature(s)
Medium	Features with a Medium paleontological sensitivity
Very High	Features with a Very High paleontological sensitivity

MAP OF RELATIVE PLANT SPECIES THEME SENSITIVITY



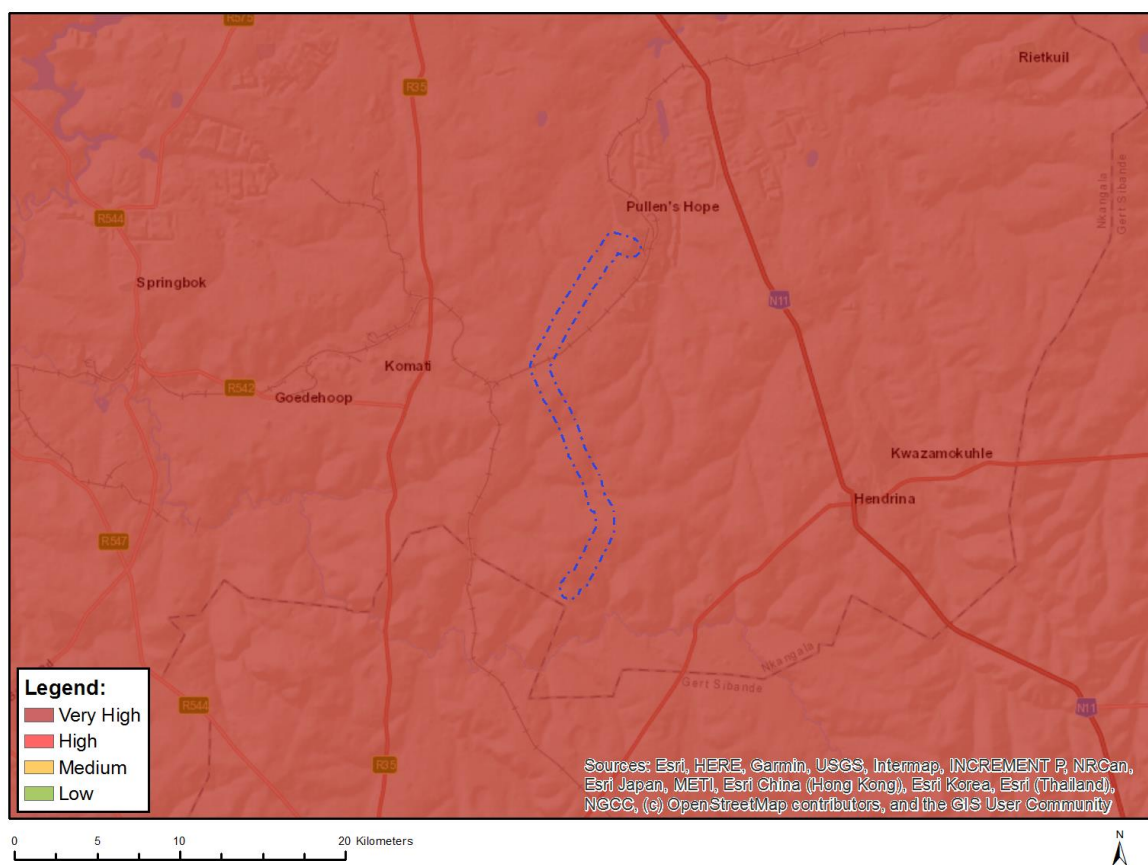
Where only a sensitive plant unique number or sensitive animal unique number is provided in the screening report and an assessment is required, the environmental assessment practitioner (EAP) or specialist is required to email SANBI at eiadatarequests@sanbi.org.za listing all sensitive species with their unique identifiers for which information is required. The name has been withheld as the species may be prone to illegal harvesting and must be protected. SANBI will release the actual species name after the details of the EAP or specialist have been documented.

Very High sensitivity	High sensitivity	Medium sensitivity	Low sensitivity
		X	

Sensitivity Features:

Sensitivity	Feature(s)
Low	Low Sensitivity
Medium	Sensitive species 1200
Medium	Sensitive species 41
Medium	Sensitive species 691
Medium	Pachycarpus suaveolens

MAP OF RELATIVE TERRESTRIAL BIODIVERSITY THEME SENSITIVITY



Very High sensitivity	High sensitivity	Medium sensitivity	Low sensitivity
X			

Sensitivity Features:

Sensitivity	Feature(s)
Very High	Critical biodiversity area 1
Very High	Critical biodiversity area 2
Very High	Protected Areas Expansion Strategy
Very High	Vulnerable ecosystem