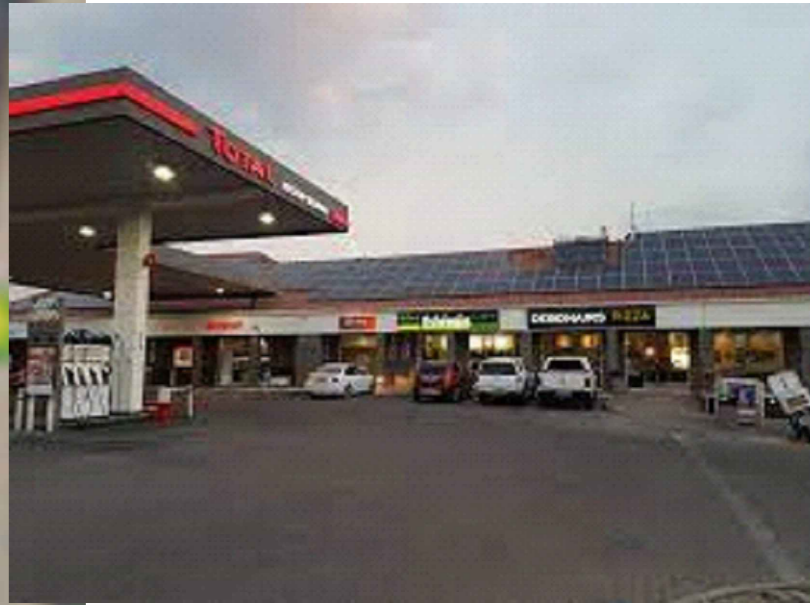




**SCHEDULE**

- 1. Petrol Station
- 2. Food Outlet
- 3. Retail Shop
- 4. Line Shop
- 5. Bottle Store
- 6. Pharmacy
- 7. Doctors Rooms
- 8. Gym
- 9. Tyer Shop
- 10. Bus Terminal
- 11. Taxi Rank



**PROPOSED AREAS**

- 1. Petrol Station =1000m<sup>2</sup>
- 2. Food Outlet =200m<sup>2</sup>
- 3. Retail Shop =1500m<sup>2</sup>
- 4. Line Shop =80m<sup>2</sup>
- 5. Bottle Store =200m<sup>2</sup>
- 6. Pharmacy =100m<sup>2</sup>
- 7. Doctors Rooms =500m<sup>2</sup>
- 8. Gym =800m<sup>2</sup>
- 9. Tyer Shop =500m<sup>2</sup>
- 10. Bus Terminal =500m<sup>2</sup>
- 11. Taxi Rank =500m<sup>2</sup>

THE SQUARE  
OF  
THORNVILLE

GABEDE PROJECTS (PTY) LTD  
5 Bellevue Road  
kloof, 3610  
CELL :084 676 2377  
Email: xolani.gabede@gmail.com  
: planners, project facilitators and construction managers

