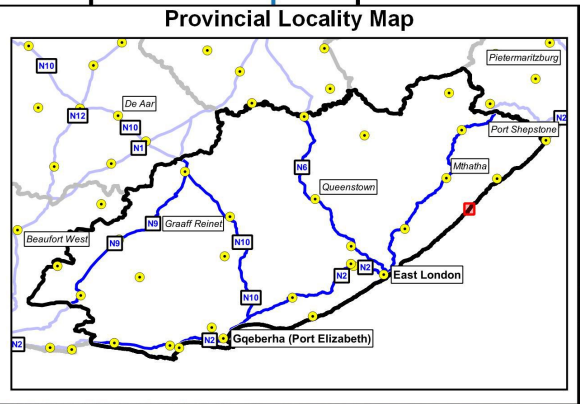


- Legend**
- Layout plan
  - Boat Launch
  - Bollards Restrict Access
  - Walkways
  - Picnic benches and bins
  - Landscaping
  - General
- Cadastral**
- Farm portions



**Study area**  
 Lon: 29°6'39,890"E  
 Lat: 32°2'0,160"S

**Affected cadastral**

Type	SG 21-digit code
Parent	C10100000000004800000



**Citations**

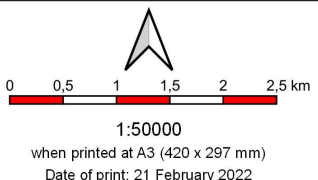
Source of data: CDNGI Portal Backdrop  
 Supplier: National Geo-Spatial Information  
 Type: 1:50000 topographic series  
 Date: Latest  
<http://www.cdngiportal.co.za/cdngiportal/>



Co-Ordinate system  
 Projection: Transverse Mercator  
 Datum: Hartbeesthoek 1994  
 Ellipsoid: WGS84  
 Central meridian: Lo 29°  
 Units: Metres  
 Scale factor: 1

**Local municipalities**  
 King Sabata Dalindyebo (EC157)

**District municipalities**  
 O.R.Tambo (DC15)



**Locality Map**

**The proposed refurbishment and construction of coastal infrastructure within the King Sabata Dalindyebo Local Municipality, Hole in the Wall, Eastern Cape**



- (1) DEDICATED PARKING AREA No.1**
  - INTRODUCE GRASS BLOCK PARKING AREA
  - ALLOW FOR ACCESSIBLE PARKING BAY
  - IDENTIFY PARKING AREA WITH SIGNAGE.
  - PROVIDE FOR BINS.

**GENERAL ITEMS:**  
CONCRETE GRASS BLOCK.  
POLY-TIMBER WASTE BINS.
- (2) ENTRANCE TO PICNIC AREA**
  - INTRODUCE BOLLARDS TO RESTRICT VEHICULAR ACCESS.
  - IDENTIFY FOOTPATHS WITH SIGNAGE.
  - PROVIDE FOR BINS.

**GENERAL ITEMS:**  
CONCRETE BOLLARDS.  
POLY-TIMBER WASTE BINS.
- (3) DEDICATED PICNIC AREA No.1**
  - FORMALIZE AND PROVIDE FOR NEW BRAAI FACILITIES.
  - ENCOURAGE PICNIC ACTIVITY BY PROVIDING PICNIC BENCHES.
  - INTRODUCE GRASS BLOCK PLATFORMS AND LANDSCAPING FOR PICNIC FACILITIES.
  - PROVIDE FOR BINS.
  - PLACE BENCH SEATING TO TAKE FULL ADVANTAGE OF VIEW

**GENERAL ITEMS:**  
BRICK AND CONCRETE BRAAI STANDS.  
POLY-TIMBER PICNIC BENCHES.  
POLY-TIMBER BENCHES.  
POLY-TIMBER WASTE BINS.
- (4) DEDICATED PICNIC AREA No.2**
  - REMOVE DAMAGED AND BROKEN BRAAI FACILITIES.
  - REMOVE DAMAGED AND BROKEN SEATING
  - FORMALIZE AND PROVIDE FOR NEW BRAAI FACILITIES.
  - ENCOURAGE PICNIC ACTIVITY BY PROVIDING PICNIC BENCHES.
  - INTRODUCE GRASS BLOCK PLATFORMS AND LANDSCAPING FOR PICNIC FACILITIES.
  - PROVIDE FOR BINS.
  - PLACE BENCH SEATING TO TAKE FULL ADVANTAGE OF VIEW

**GENERAL ITEMS:**  
BRICK AND CONCRETE BRAAI STANDS.  
POLY-TIMBER PICNIC BENCHES.  
POLY-TIMBER BENCHES.  
POLY-TIMBER WASTE BINS.
- (5) DEDICATED PICNIC AREA No.3**
  - FORMALIZE AND PROVIDE FOR NEW BRAAI FACILITIES.
  - ENCOURAGE PICNIC ACTIVITY BY PROVIDING PICNIC BENCHES.
  - INTRODUCE GRASS BLOCK PLATFORMS AND LANDSCAPING FOR PICNIC FACILITIES.
  - PROVIDE FOR BINS.
  - PLACE BENCH SEATING TO TAKE FULL ADVANTAGE OF VIEW

**GENERAL ITEMS:**  
BRICK AND CONCRETE BRAAI STANDS.  
POLY-TIMBER PICNIC BENCHES.  
POLY-TIMBER BENCHES.  
POLY-TIMBER WASTE BINS.
- (6) BENCHES AND BINS**
  - ENCOURAGE PICNIC ACTIVITY BY PROVIDING PICNIC BENCHES.
  - PROVIDE FOR BINS.
  - PLACE BENCH SEATING TO TAKE FULL ADVANTAGE OF VIEW

**GENERAL ITEMS:**  
POLY-TIMBER PICNIC BENCHES.  
POLY-TIMBER BENCHES.  
POLY-TIMBER WASTE BINS.
- (7) FOOT PATH - PARKING AREA TO COASTLINE**
  - ENCOURAGE PICNIC ACTIVITY BY PROVIDING PICNIC BENCHES.
  - PROVIDE FOR BINS.
  - PLACE BENCH SEATING TO TAKE FULL ADVANTAGE OF VIEW

**GENERAL ITEMS:**  
POLY-TIMBER PICNIC BENCHES.  
POLY-TIMBER BENCHES.  
POLY-TIMBER WASTE BINS.
- (8) DEDICATED PICNIC AREA No.4**
  - ENCOURAGE PICNIC ACTIVITY BY PROVIDING PICNIC BENCHES.
  - INTRODUCE GRASS BLOCK PLATFORMS AND LANDSCAPING FOR PICNIC FACILITIES.
  - PROVIDE FOR BINS.
  - PLACE BENCH SEATING TO TAKE FULL ADVANTAGE OF VIEW

**GENERAL ITEMS:**  
POLY-TIMBER PICNIC BENCHES.  
POLY-TIMBER BENCHES.  
POLY-TIMBER WASTE BINS.
- (9) DEDICATED PICNIC AREA No.5**
  - FORMALIZE AND PROVIDE FOR NEW BRAAI FACILITIES.
  - ENCOURAGE PICNIC ACTIVITY BY PROVIDING PICNIC BENCHES.
  - INTRODUCE GRASS BLOCK PLATFORMS AND LANDSCAPING FOR PICNIC FACILITIES.
  - PROVIDE FOR BINS.
  - PLACE BENCH SEATING TO TAKE FULL ADVANTAGE OF VIEW

**GENERAL ITEMS:**  
BRICK AND CONCRETE BRAAI STANDS.  
POLY-TIMBER PICNIC BENCHES.  
POLY-TIMBER BENCHES.  
POLY-TIMBER WASTE BINS.
- (10) VIEWING DECK**
  - INTRODUCE A VIEWING DECK
  - PROVIDE FOR BINS.
  - PROVIDE FOR BENCH SEATING.
  - PROVIDE FOR PICNIC BENCHES

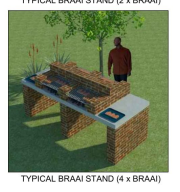
**GENERAL ITEMS:**  
POLY-TIMBER BENCHES  
POLY-TIMBER WASTE BINS  
POLY-TIMBER WALKWAY
- (11) FOOTPATH TO THE BOILING POT**
  - EXISTING FOOTPATH TO THE BOILING POT WILL REMAIN UNTOUCHED AND UNCHANGED.
- (12) DEDICATED PICNIC AREA No.6**
  - ENCOURAGE PICNIC ACTIVITY BY PROVIDING PICNIC BENCHES.
  - PROVIDE FOR BINS.
  - PLACE BENCH SEATING TO TAKE FULL ADVANTAGE OF VIEW

**GENERAL ITEMS:**  
POLY-TIMBER PICNIC BENCHES.  
POLY-TIMBER BENCHES.  
POLY-TIMBER WASTE BINS.
- (13) ACCESS O FISHING SPOT**
  - EXISTING FISHING SPOT
  - INTRODUCE STEPS TO EXISTING ROCK FACE TO MAKE THE FISHING SPOT MORE ACCESSIBLE.

**GENERAL ITEMS:**  
CONCRETE STEPS CAST AND ANCHORED TO THE ROCK FACE
- (14) DEDICATED PARKING AREA No.2**
  - INTRODUCE GRASS BLOCK PARKING AREA
  - ALLOW FOR ACCESSIBLE PARKING BAY
  - IDENTIFY PARKING AREA SIGNAGE.
  - FORMALIZE AND PROVIDE FOR NEW BRAAI FACILITIES.
  - ENCOURAGE PICNIC ACTIVITY BY PROVIDING PICNIC BENCHES.
  - INTRODUCE GRASS BLOCK PLATFORMS AND LANDSCAPING FOR PICNIC FACILITIES.
  - PROVIDE FOR BINS.
  - PLACE BENCH SEATING TO TAKE FULL ADVANTAGE OF VIEW

**GENERAL ITEMS:**  
CONCRETE GRASS BLOCK.  
BRICK AND CONCRETE BRAAI STANDS.  
POLY-TIMBER PICNIC BENCHES.  
POLY-TIMBER BENCHES.  
POLY-TIMBER WASTE BINS.
- (16) HOLE IN THE WALL HOTEL**
  - FORMALIZE EXISTING BOAT LAUNCH.
  - UPGRADE EXISTING ACCESS ROAD.
  - INTRODUCE MINOR LANDSCAPING.
  - PROVIDE PICNIC BENCHES
  - IDENTIFY BOAT LAUNCH WITH SIGNAGE.
  - INTRODUCE RENO MATTRESS AT HIGH WATER MARK
  - PROVIDE FOR BINS.
  - UPGRADE EXISTING ROADWAY FROM BOOM TO BOAT LAUNCH

**GENERAL ITEMS:**  
GRASS BLOCK ACCESS ROAD.  
MATTRESS AT HIGH WATER MARK  
POLY-TIMBER PICNIC BENCHES.  
POLY-TIMBER BENCHES.  
POLY-TIMBER WASTE BINS.



**LEGEND**

	FOOTPATH - PICNIC AREA ENTRANCE TO COAST
	FOOTPATH - JOINING PICNIC AREA 3
	FOOTPATH - FOREST TO BOILING POT
	FOOTPATH - JOINING PICNIC AREA 4 & 5
	BOLLARDS TO RESTRICT VEHICULAR ACCESS

**SYMBOLS**

	WASTE BIN		VIEWING AREA
	FORMALIZED WALKWAY		PARKING AREA
	BENCH SEATING		BOLLARDS
	PICNIC AREA		BOAT LAUNCH
	BRAAI FACILITIES		FISHING SPOT

P.O. Box 509, Mahanda / Grahamstown, 6140  
Tel: +27 (0)46 622 7223, Fax: +27 (0)46 570 7884  
E-mail: gni@mb.co.za  
3 Main Street, Mahanda / Grahamstown, 6139  
Website: www.mbb.co.za

Civil, Agricultural, Structural, Environmental, Project Management

**MBB CONSULTING ENGINEERS (EC)**

The copyright of this design and drawing is reserved.  
Scaled measurements are not valid.  
Check drawing measurements before commencing work.  
This drawing is specific to this project and should not be used for any other project on any other site.

For: MBB CONSULTING ENGINEERS

Pt Tech Eng: \_\_\_\_\_ Date: \_\_\_\_\_

DEPARTMENT OF FORESTRY, FISHERIES AND THE ENVIRONMENT

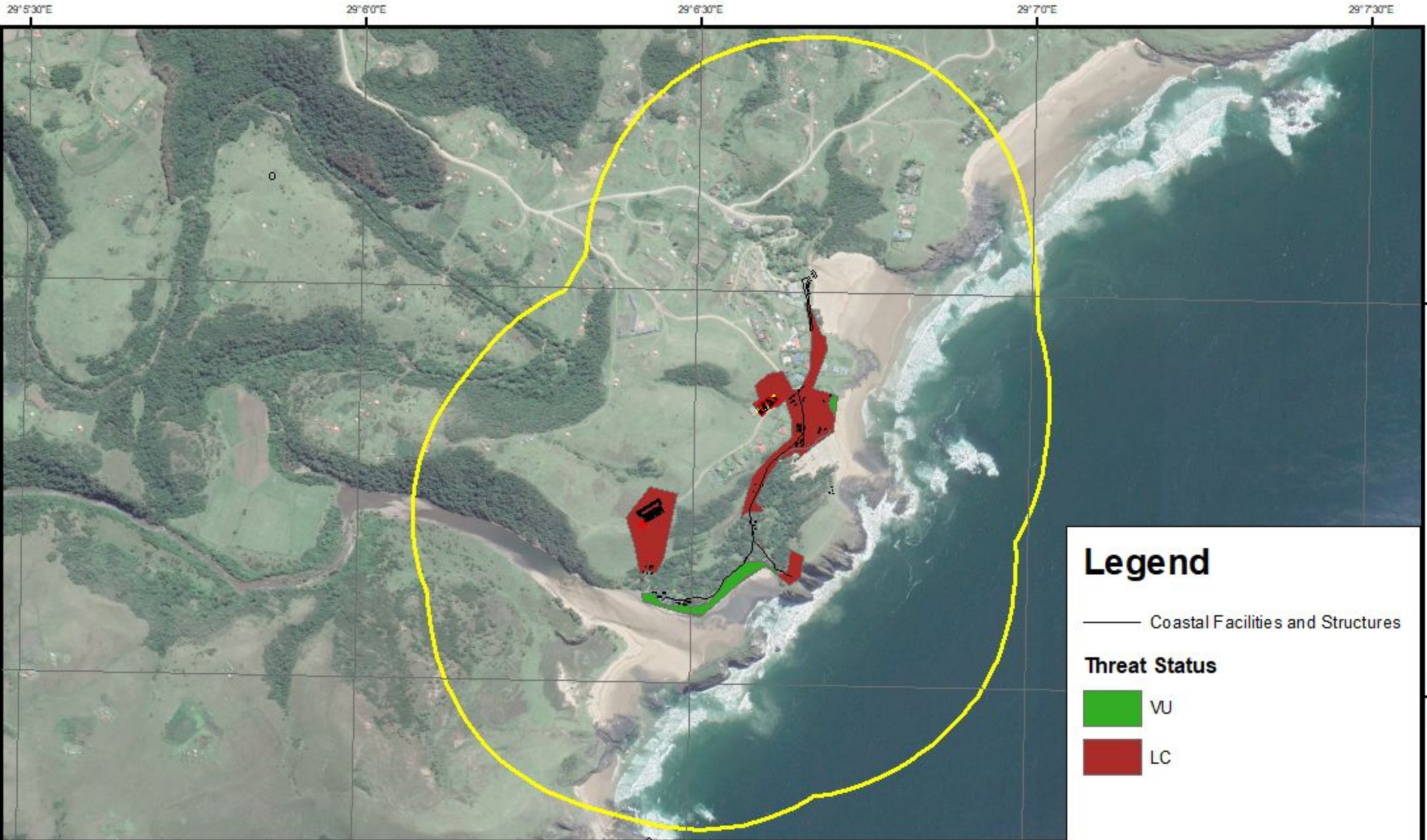
PROPOSED UPGRADE AND CONSTRUCTION OF COASTAL INFRASTRUCTURE WITHIN THE KING SABATA DALINDYEBO LOCAL MUNICIPALITY, COFFEE BAY & HOLE IN THE WALL, EASTERN CAPE

HOLE IN THE WALL - PROPOSED UPGRADES ZONING PLAN

R2	FEB 2022	AMENDED LAYOUT	RRK	PKN																
R1	APRIL 2021	AMENDED LAYOUT	RRK	PKN																
Rev.	Date	Description	By	Chkd																
DRAWING NUMBER										PROJECT NUMBER										
G 2 8 5 7 C 0 2 0 3 R 2										DISC ETAGE DRAWING CODE REVISION NUMBER										

USE: FOR INFORMATION

Drawn	R.KRIGGE	Surveyed	
Date	APRIL-2021	Designed	L.MAFUMA
Scale	1:2000	Checked	P.NOSIB



### Legend

- Coastal Facilities and Structures

#### Threat Status

- VU
- LC



0      225      450      900  
 Meters

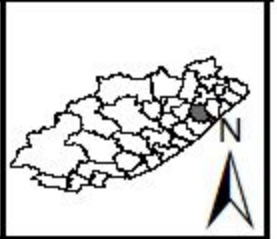
Coordinate System: GCS WGS 1984  
 Datum: WGS 1984  
 Units: Degree  
 Date: February 2022

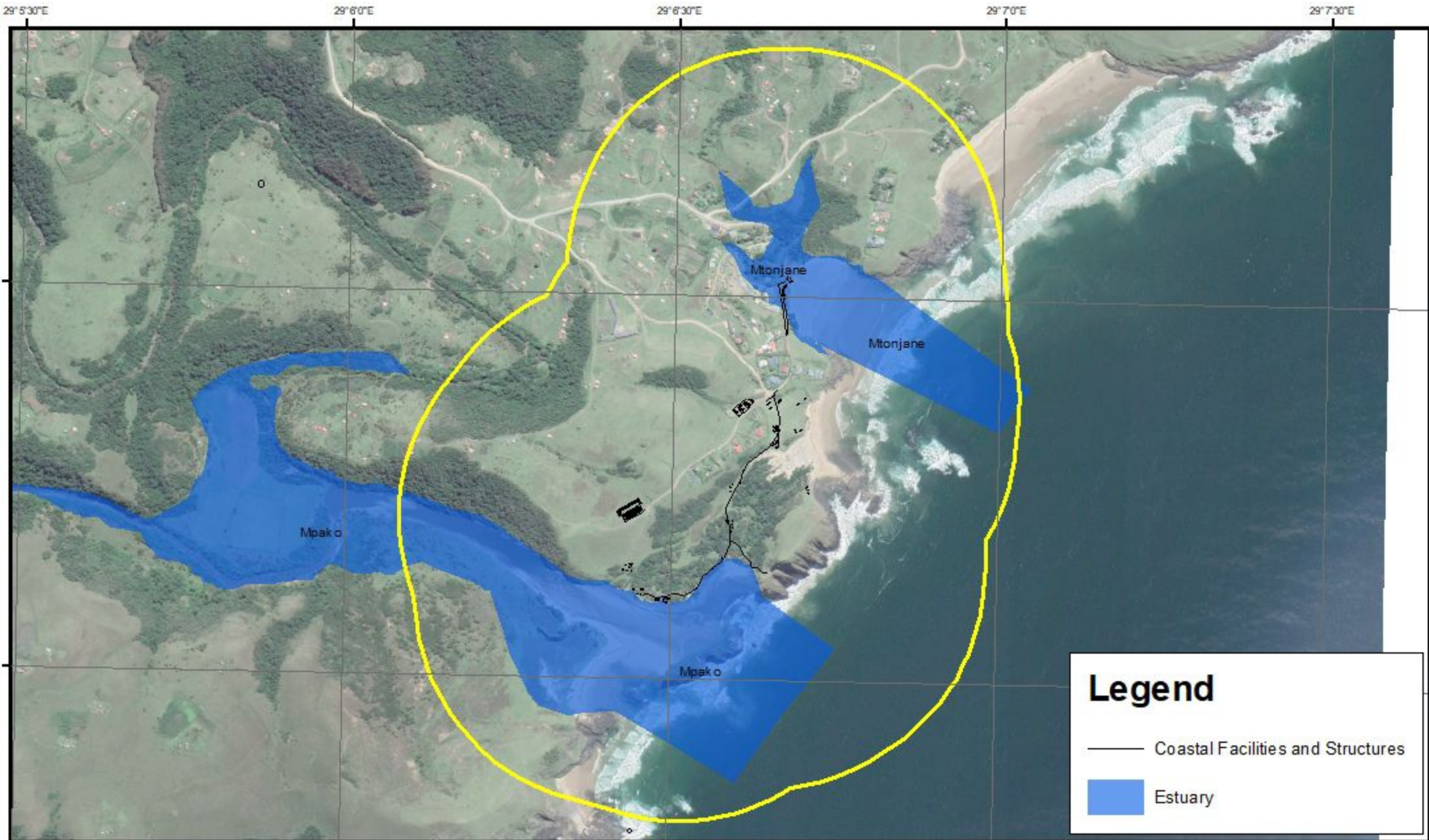
Prepared for: ACER (Africa)  
 Environmental Consultants  
 Prepared by: Exigent  
 Environmental Consultants

**HOLE IN THE WALL PROPOSED INFRA STRUCTURE,  
 EASTERN CAPE.**



*Coastal Threat Status Map*

King Sabata Dalindyebo Local Municipality






### Legend

-  Coastal Facilities and Structures
-  Estuary



0      230      460      920  
 Meters

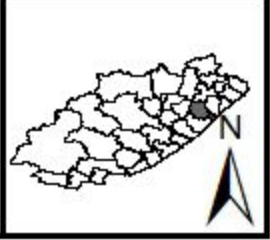
Coordinate System: GCS WGS 1984  
 Datum: WGS 1984  
 Units: Degree  
 Date: February 2022

Prepared for: ACER (Africa)  
 Environmental Consultants  
 Prepared by: Exigent  
 Environmental Consultants

**HOLE IN THE WALL PROPOSED INFRA STRUCTURE,  
 EASTERN CAPE.**

*Estuary Map*

King Sabata Dalindyebo Local Municipality



29° 5'30"E

29° 6'0"E

29° 6'30"E

29° 7'0"E

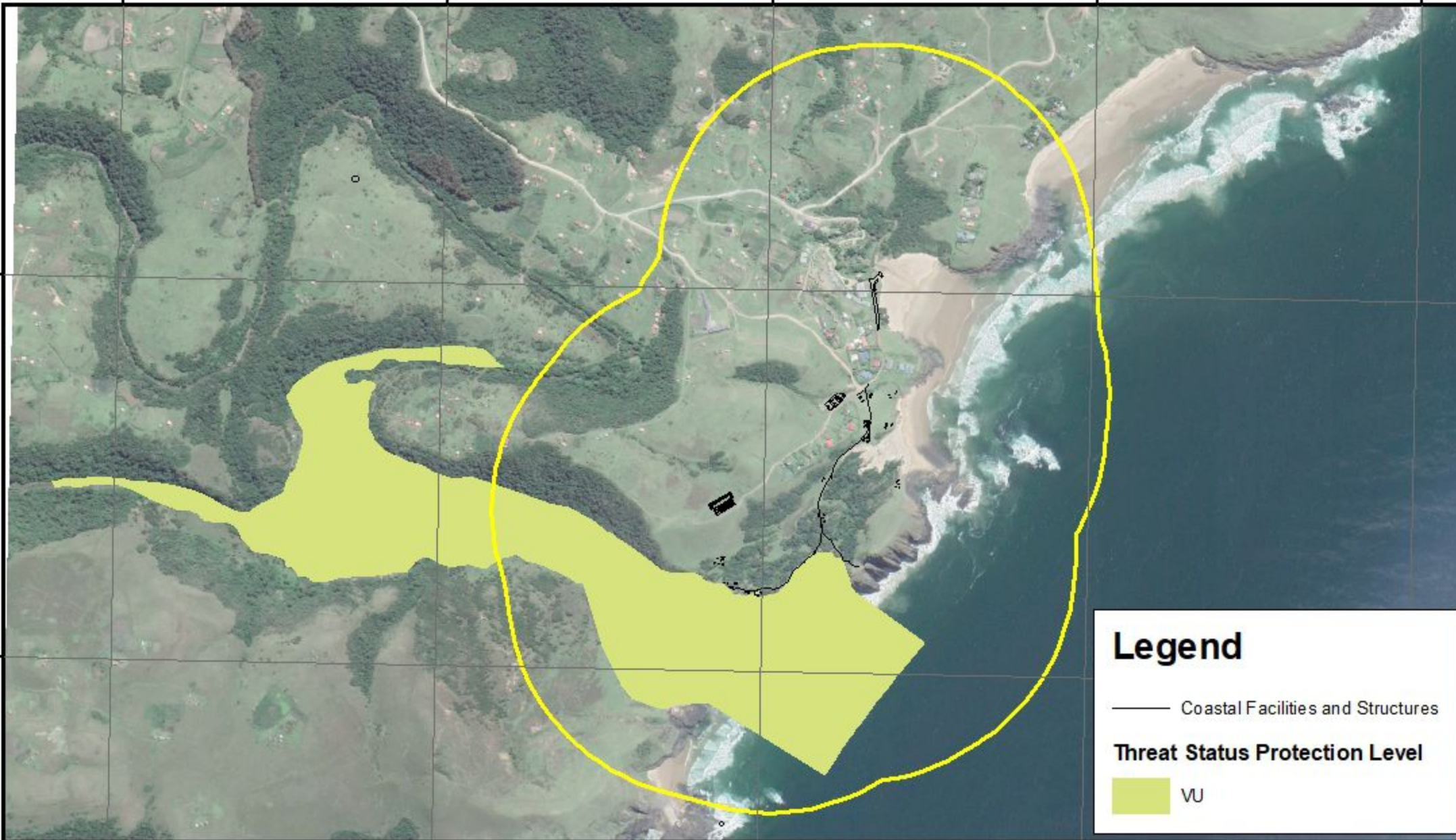
29° 7'30"E

32° 2'0"S

32° 2'0"S

32° 2'30"S

32° 2'30"S



**Legend**

— Coastal Facilities and Structures

**Threat Status Protection Level**

■ VU



0 240 480 960 Meters

Coordinate System: GCS WGS 1984  
 Datum: WGS 1984  
 Units: Degree  
 Date: February 2022

Prepared for: ACER (Africa)  
 Environmental Consultants

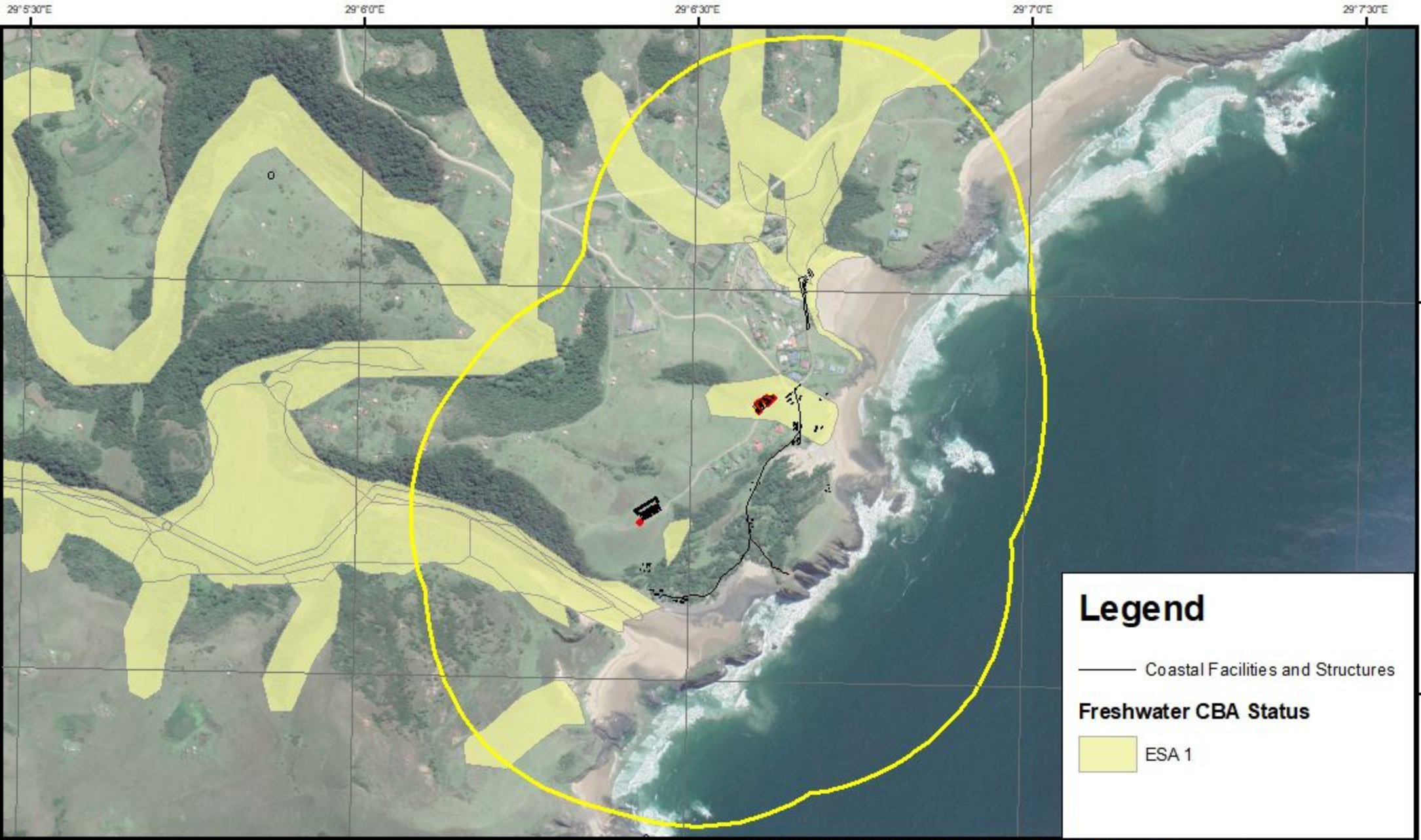
Prepared by: Exigent  
 Environmental Consultants

**HOLE IN THE WALL PROPOSED INFRA STRUCTURE,  
 EASTERN CAPE.**

*Estuarine Threat Status Map*

King Sabata Dalindyebo Local Municipality





**Legend**

— Coastal Facilities and Structures

**Freshwater CBA Status**

ESA 1



0 225 450 900 Meters

Coordinate System: GCS WGS 1984  
 Datum: WGS 1984  
 Units: Degree  
 Date: February 2022

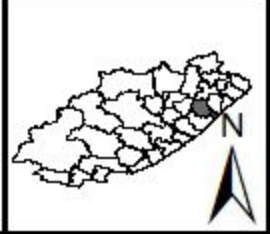
Prepared for: ACER (Africa)  
 Environmental Consultants

Prepared by: Exigent  
 Environmental Consultants

**HOLE IN THE WALL PROPOSED INFRA STRUCTURE,  
 EASTERN CAPE.**

*Freshwater Critical Biodiversity Area Map*

King Sabata Dalindyebo Local Municipality



29° 6' 30" E

29° 7' 0" E

32° 2' 0" S

32° 2' 0" S



**Legend**

—— Coastal Facilities and Structures



0 115 230 460 Meters

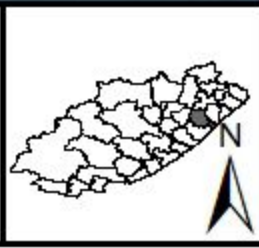
Coordinate System: GCS WGS 1984  
 Datum: WGS 1984  
 Units: Degree  
 Date: February 2022

Prepared for: ACER (Africa)  
 Environmental Consultants  
 Prepared by: Exigent  
 Environmental Consultants

**HOLE IN THE WALL PROPOSED INFRA STRUCTURE,  
 EASTERN CAPE.**

*Locality Map*

King Sabata Dalindyebo Local Municipality



29°5'30"E

29°6'30"E

29°6'30"E

29°7'0"E

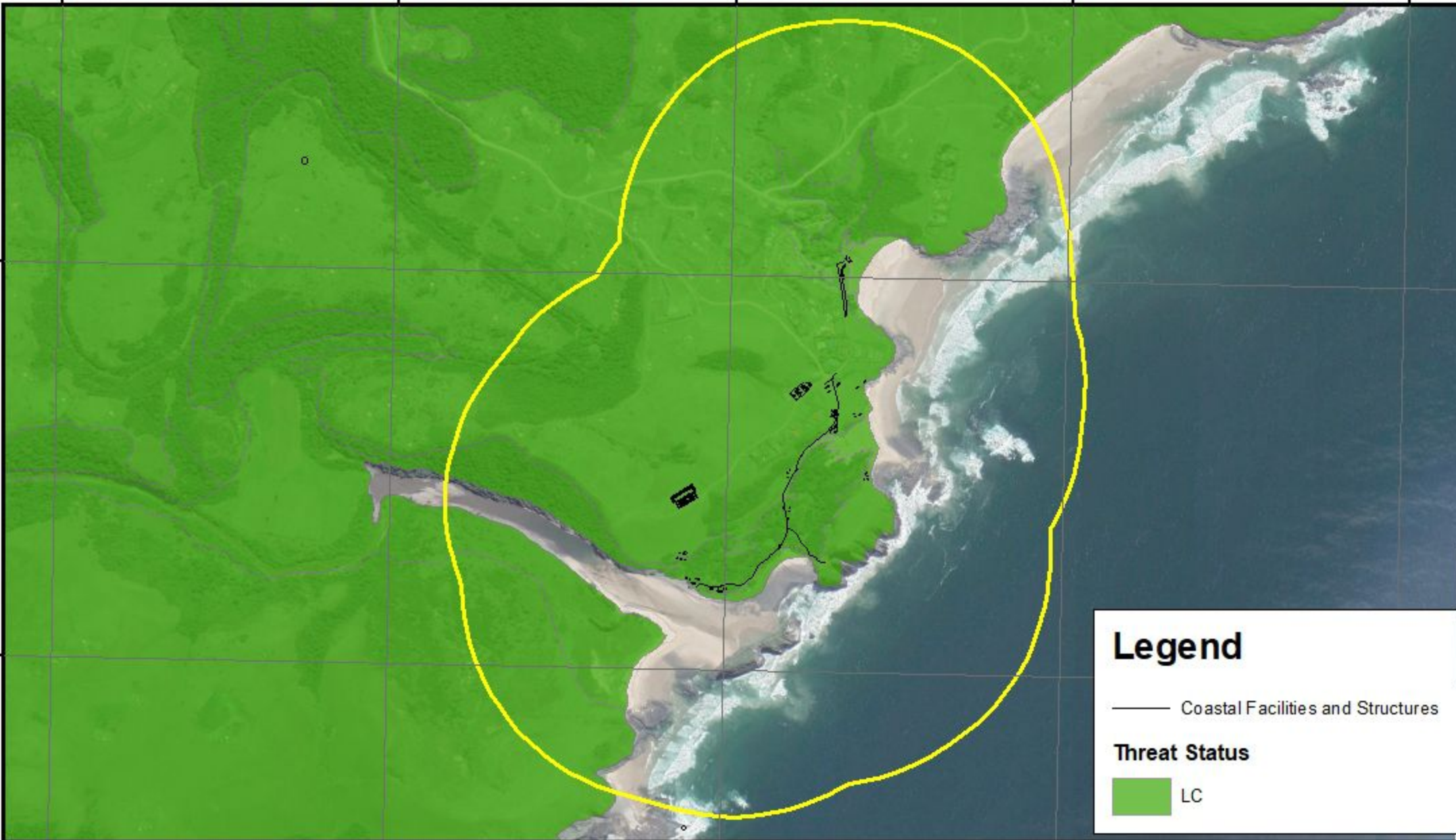
29°7'30"E

32°2'0"S

32°2'0"S

32°2'30"S

32°2'30"S



**Legend**

— Coastal Facilities and Structures

**Threat Status**

■ LC



0 230 460 920 Meters

Coordinate System: GCS WGS 1984  
 Datum: WGS 1984  
 Units: Degree  
 Date: February 2022

Prepared for: ACER (Africa)  
 Environmental Consultants

Prepared by: Exigent  
 Environmental Consultants

**HOLE IN THE WALL PROPOSED INFRA STRUCTURE,  
 EASTERN CAPE.**

*NBA Threat Status Map*

King Sabata Dalindyebo Local Municipality





29°6'0"E

29°6'30"E

29°7'0"E

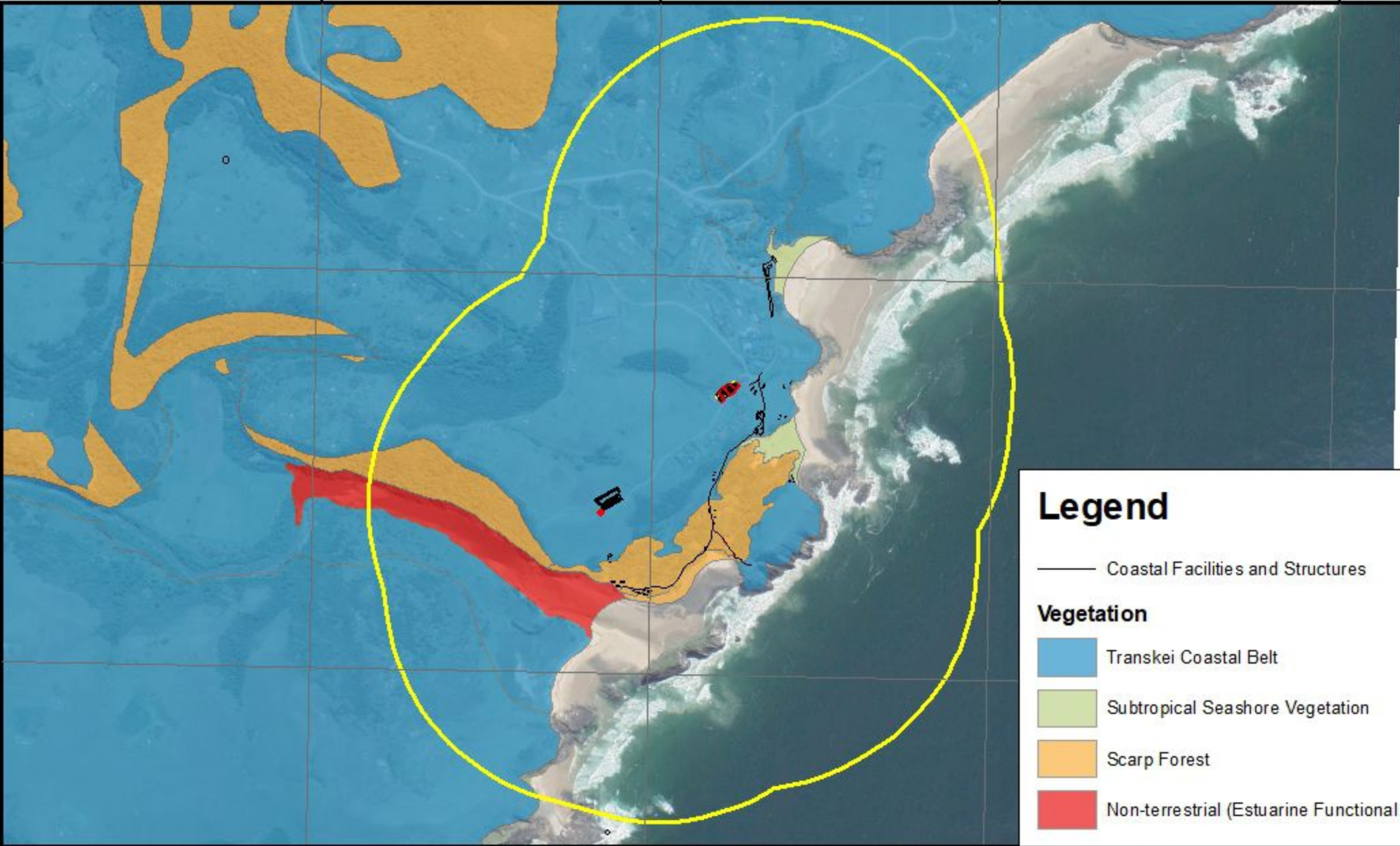
29°7'30"E

32°2'0"S

32°2'0"S

32°2'30"S

32°2'30"S



### Legend

— Coastal Facilities and Structures

#### Vegetation

- Transkei Coastal Belt
- Subtropical Seashore Vegetation
- Scarp Forest
- Non-terrestrial (Estuarine Functional Zone)



Coordinate System: GCS WGS 1984  
 Datum: WGS 1984  
 Units: Degree  
 Date: February 2022

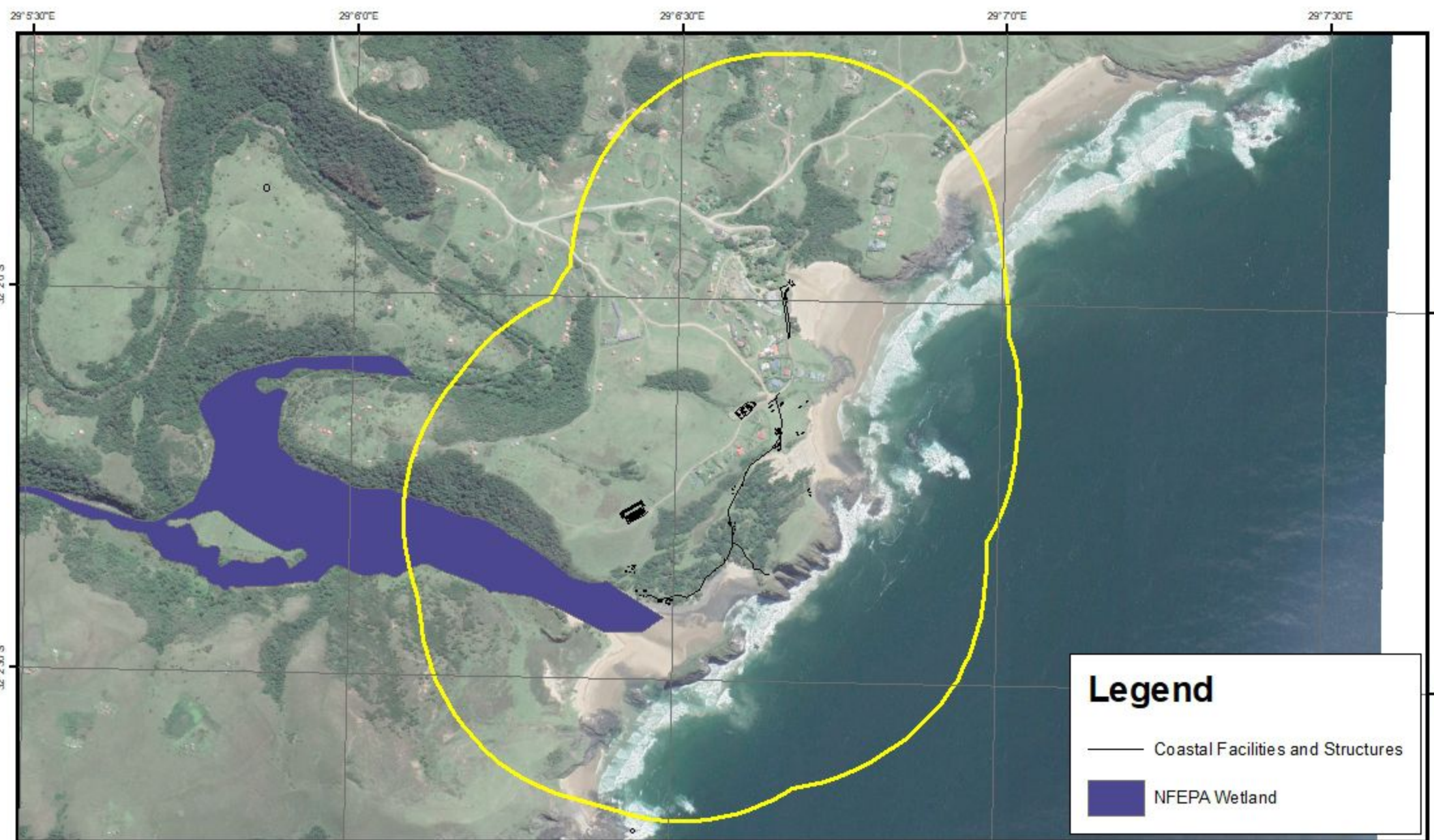
Prepared for: ACER (Africa)  
 Environmental Consultants  
 Prepared by: Exigent  
 Environmental Consultants

### HOLE IN THE WALL PROPOSED INFRA STRUCTURE, EASTERN CAPE.

#### Vegetation Map

King Sabata Dalindyebo Local Municipality






### Legend

-  Coastal Facilities and Structures
-  NFEPA Wetland



0      230      460      920  
 Meters

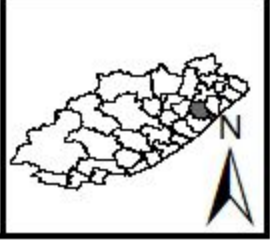
Coordinate System: GCS WGS 1984  
 Datum: WGS 1984  
 Units: Degree  
 Date: February 2022

Prepared for: ACER (Africa)  
 Environmental Consultants  
 Prepared by: Exigent  
 Environmental Consultants

**HOLE IN THE WALL PROPOSED INFRA STRUCTURE,  
 EASTERN CAPE.**

*NFEPA Wetlands Map*

King Sabata Dalindyebo Local Municipality



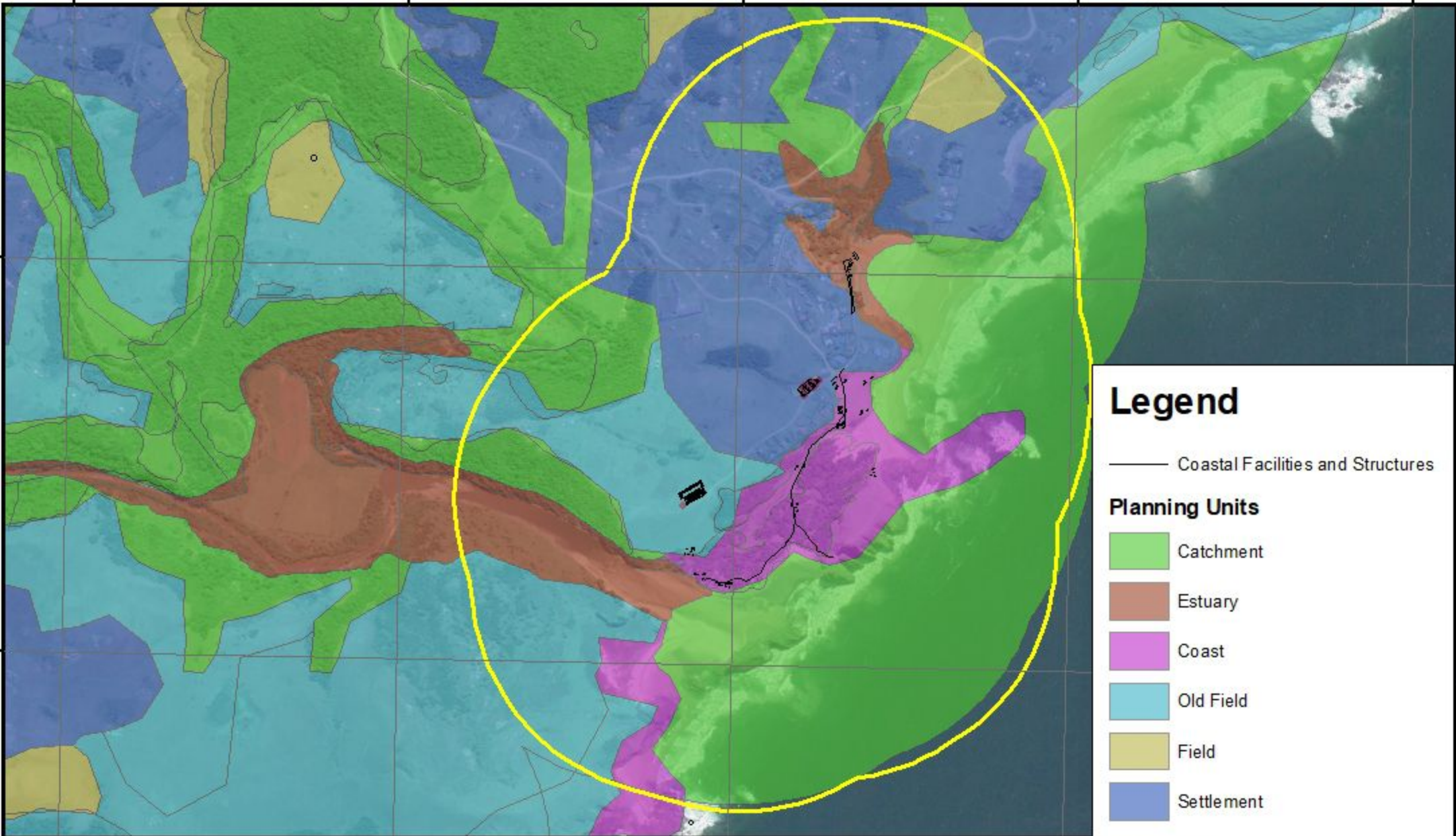
29°5'30"E 29°6'0"E 29°6'30"E 29°7'0"E 29°7'30"E

32°20'S

32°20'S

32°23'S

32°23'S



### Legend

- Coastal Facilities and Structures

#### Planning Units

- Catchment
- Estuary
- Coast
- Old Field
- Field
- Settlement



0 230 460 920 Meters

Coordinate System: GCS WGS 1984  
 Datum: WGS 1984  
 Units: Degree  
 Date: February 2022

Prepared for: ACER (Africa)  
 Environmental Consultants

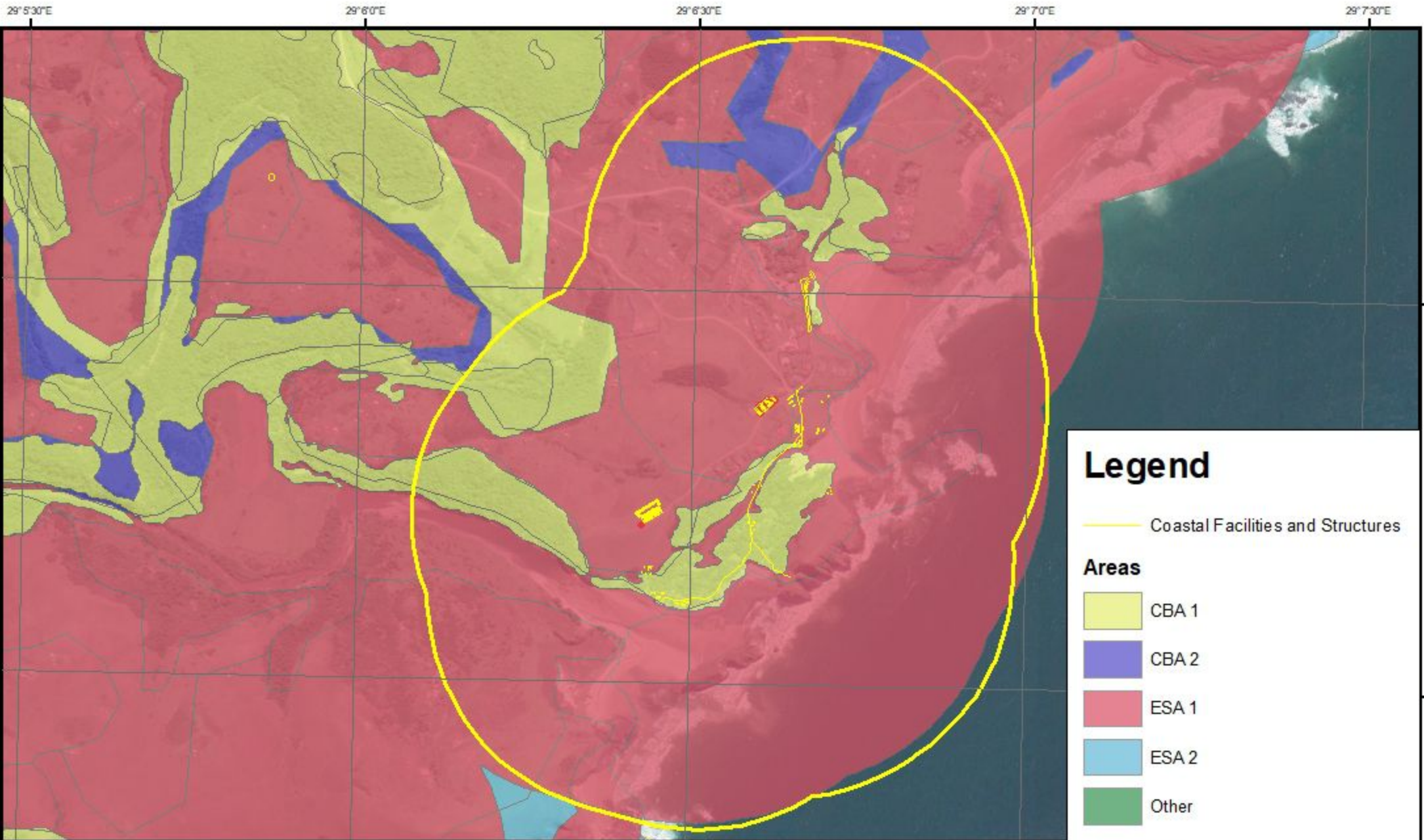
Prepared by: Exigent  
 Environmental Consultants

**HOLE IN THE WALL PROPOSED INFRA STRUCTURE,  
 EASTERN CAPE.**


*Planning Units Map*

King Sabata Dalindyebo Local Municipality










### Legend

-  Coastal Facilities and Structures

**Areas**

-  CBA 1
-  CBA 2
-  ESA 1
-  ESA 2
-  Other



0 225 450 900 Meters

Coordinate System: GCS WGS 1984  
 Datum: WGS 1984  
 Units: Degree  
 Date: February 2022

Prepared for: ACER (Africa)  
 Environmental Consultants

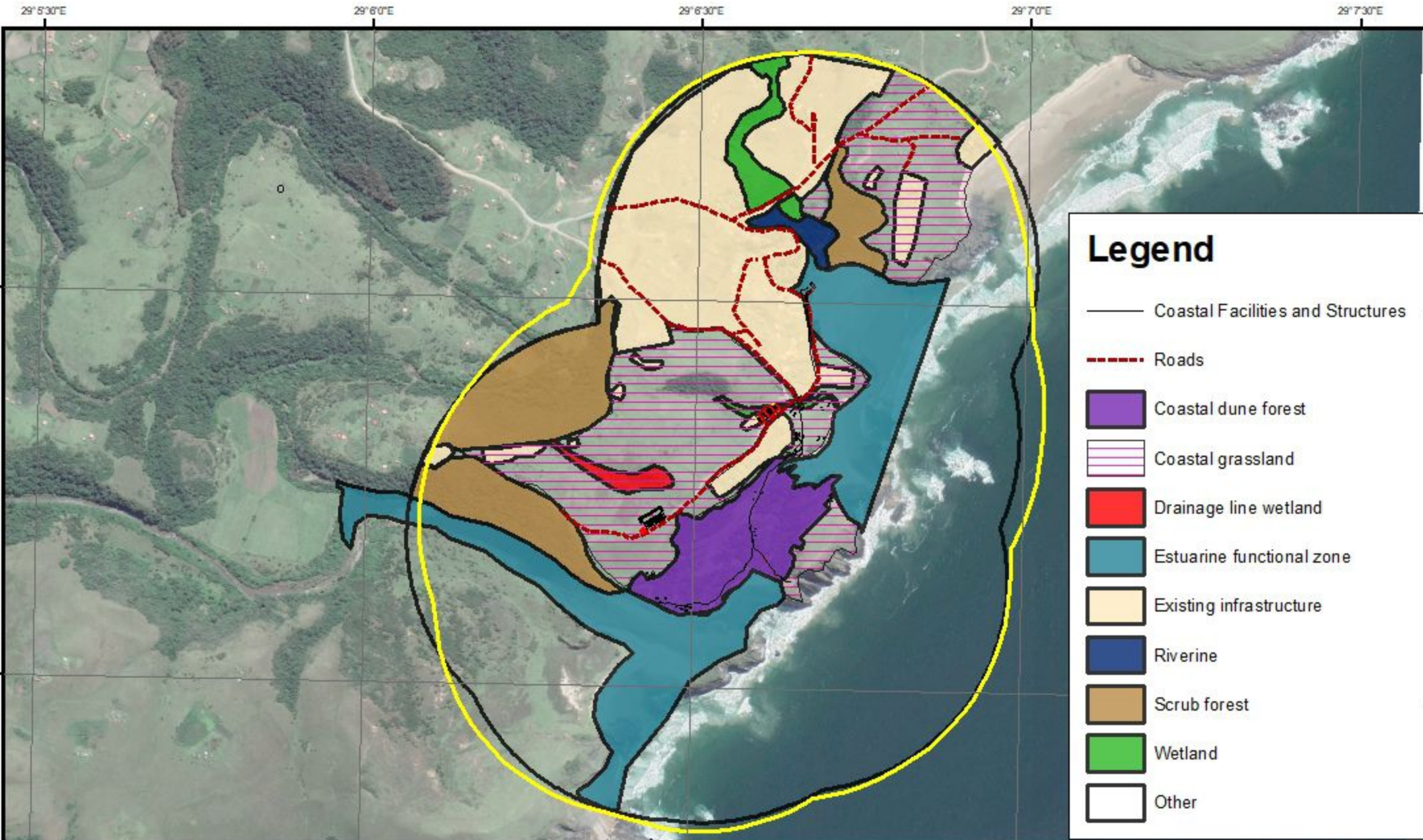
Prepared by: Exigent  
 Environmental Consultants

**HOLE IN THE WALL PROPOSED INFRA STRUCTURE,  
 EASTERN CAPE.**

*Terrestrial Critical Biodiversity Area Map*

King Sabata Dalindyebo Local Municipality





### Legend

- Coastal Facilities and Structures
- - - Roads
- Coastal dune forest
- ▨ Coastal grassland
- Drainage line wetland
- Estuarine functional zone
- Existing infrastructure
- Riverine
- Scrub forest
- Wetland
- Other



0 230 460 920 Meters

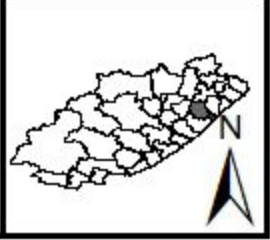
Coordinate System: GCS WGS 1984  
 Datum: WGS 1984  
 Units: Degree  
 Date: February 2022

Prepared for: ACER (Africa)  
 Environmental Consultants  
 Prepared by: Exigent  
 Environmental Consultants

**HOLE IN THE WALL PROPOSED INFRASTRUCTURE,  
 EASTERN CAPE.**

*Vegetation Communities Map*

King Sabata Dalindyebo Local Municipality



29°6'0"E

29°6'30"E

29°7'0"E

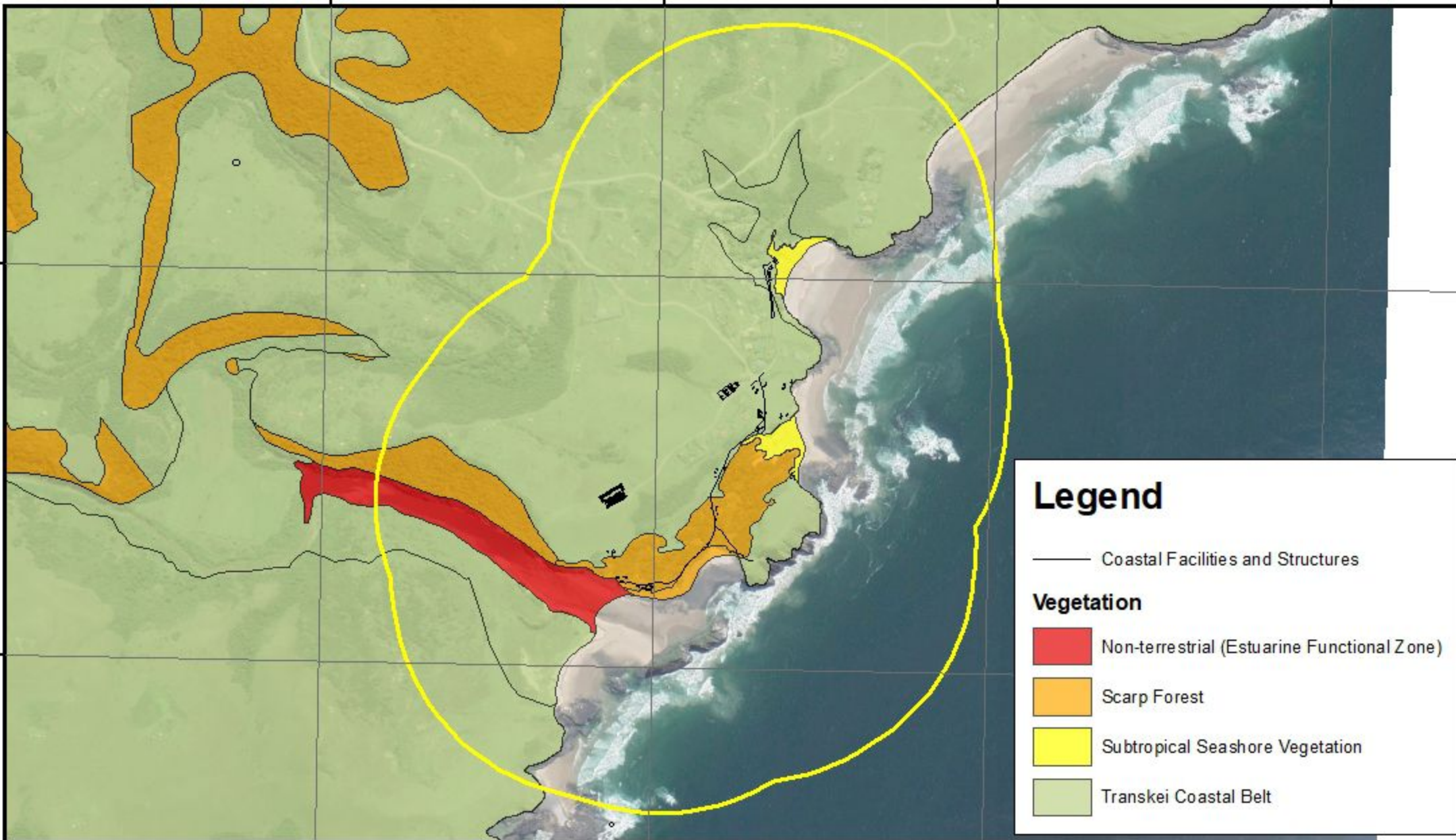
29°7'30"E

32°2'0"S

32°2'0"S

32°2'30"S

32°2'30"S



### Legend

— Coastal Facilities and Structures

### Vegetation

- Non-terrestrial (Estuarine Functional Zone)
- Scarp Forest
- Subtropical Seashore Vegetation
- Transkei Coastal Belt



Coordinate System: GCS WGS 1984  
 Datum: WGS 1984  
 Units: Degree  
 Date: February 2022

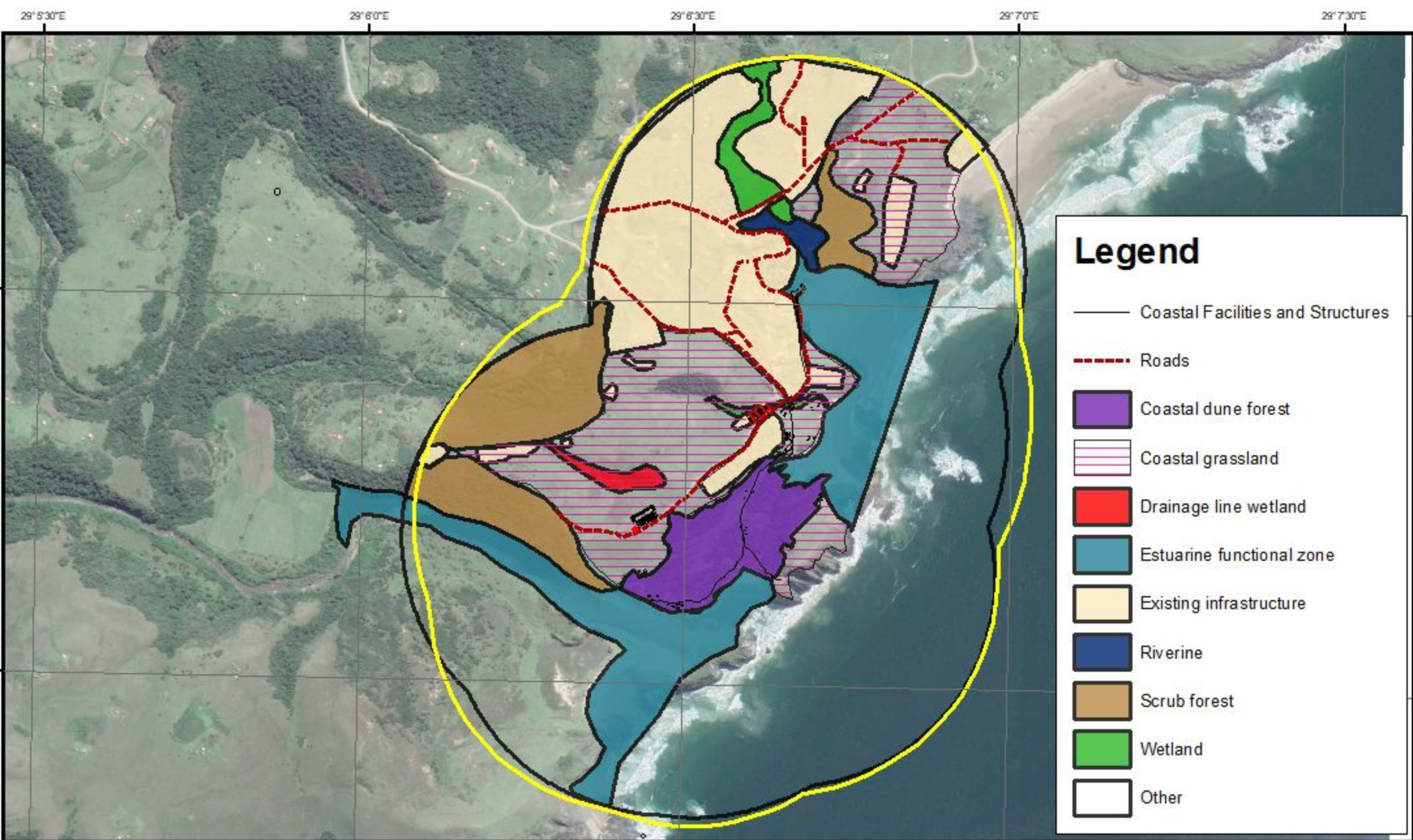
Prepared for: ACER (Africa)  
 Environmental Consultants  
 Prepared by: Exigent  
 Environmental Consultants

### HOLE IN THE WALL PROPOSED INFRA STRUCTURE, EASTERN CAPE.

### *Vegetation Sensitivity Map*

King Sabata Dalindyebo Local Municipality





### Legend

- Coastal Facilities and Structures
- Roads
- Coastal dune forest
- Coastal grassland
- Drainage line wetland
- Estuarine functional zone
- Existing infrastructure
- Riverine
- Scrub forest
- Wetland
- Other



0      230      460      920  
 Meters

Coordinate System: GCS WGS 1984  
 Datum: WGS 1984  
 Units: Degree  
 Date: February 2022

Prepared for: ACER (Africa)  
 Environmental Consultants  
 Prepared by: Exigent  
 Environmental Consultants

**HOLE IN THE WALL PROPOSED INFRASTRUCTURE,  
 EASTERN CAPE.**

*Wetland Communities Map*

King Sabata Dalindyebo Local Municipality

