

Figure 1: Location of the existing and proposed route for the section of the 275 kV power line to be relocated.

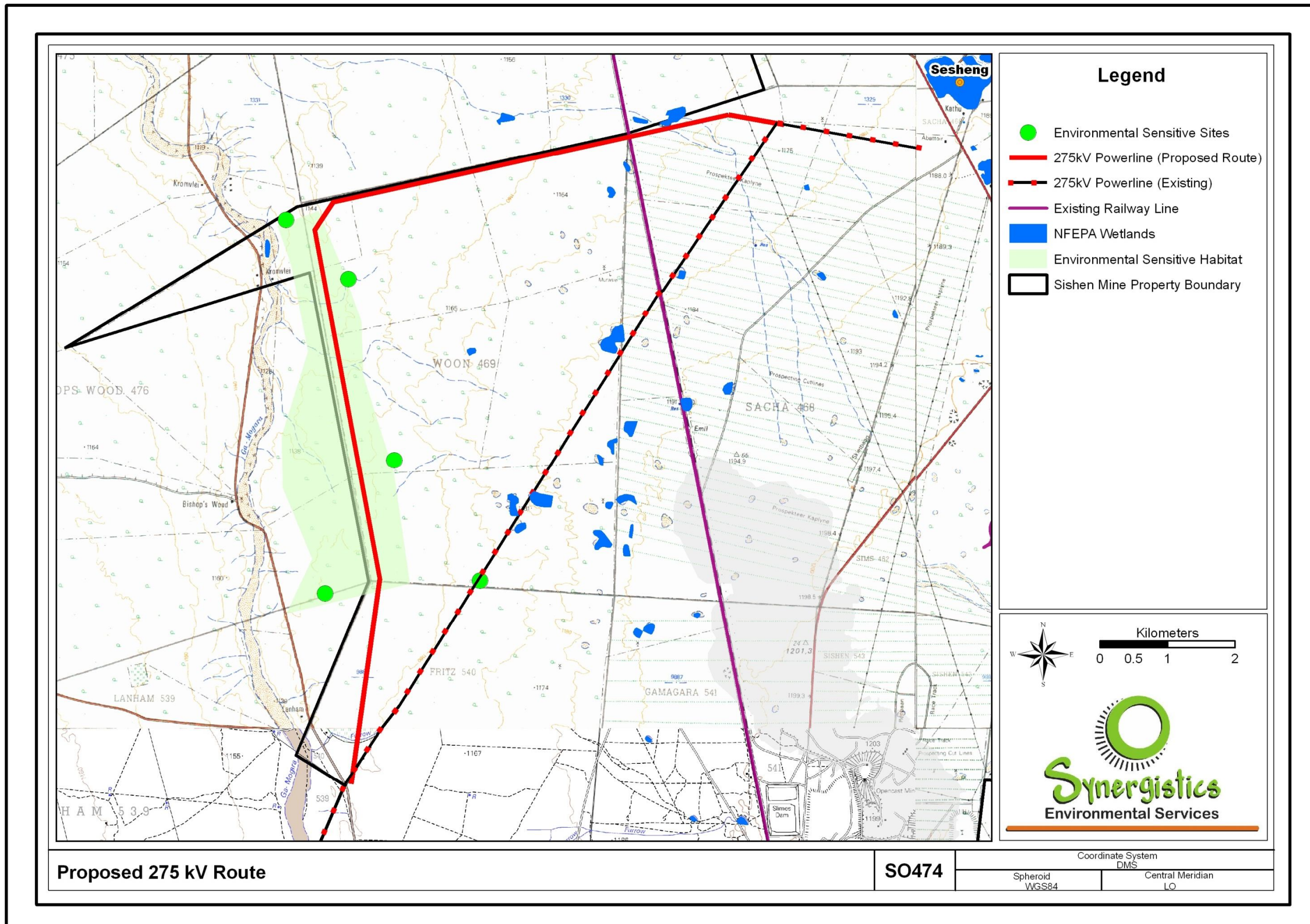


Figure 2: Sensitivity Map

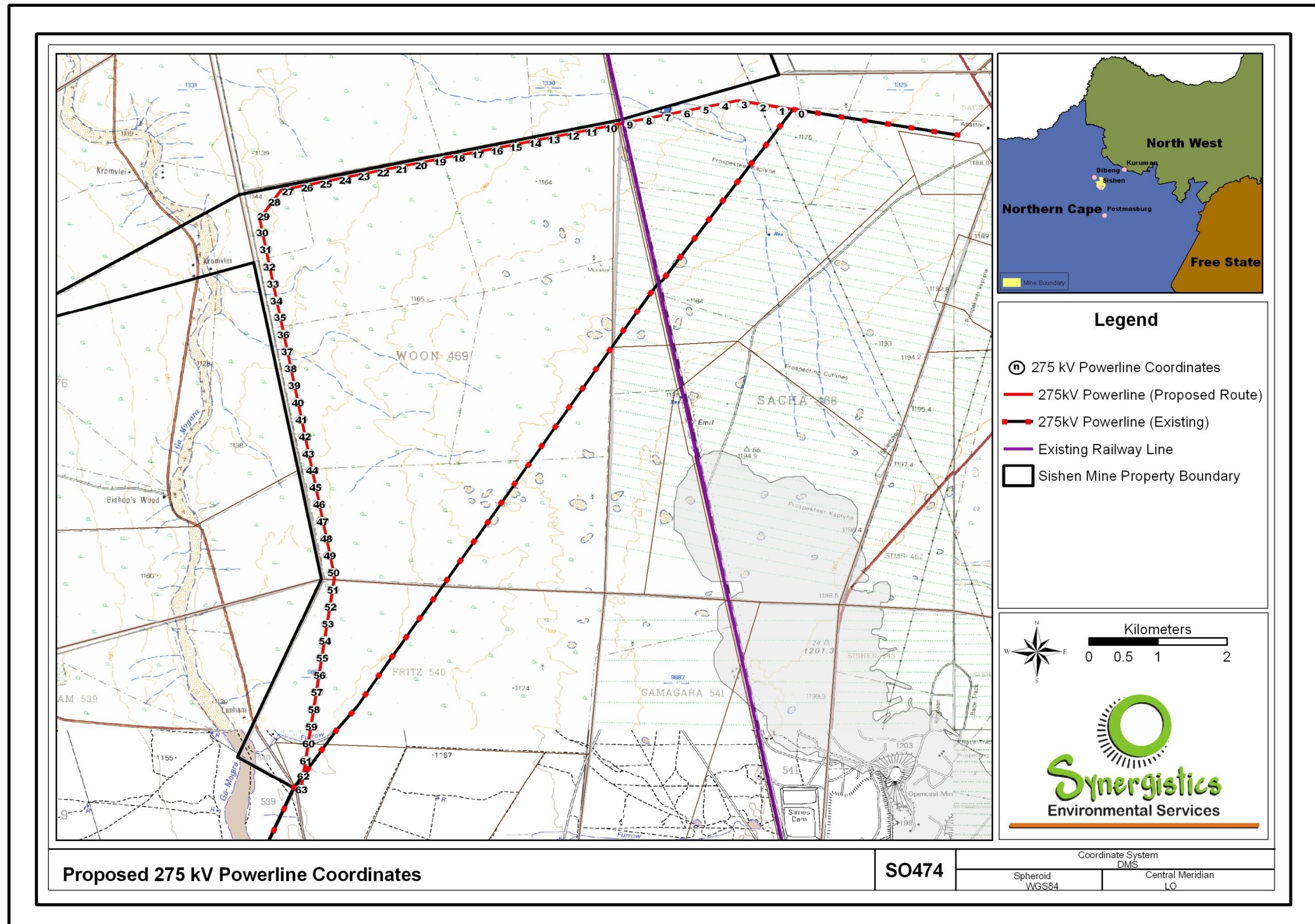


Figure 3: Coordinate locations along the new route for the 275 kV power line

Table 1: List of coordinates taken every 250 m along the proposed route for the section of the 275 kV power line

Reference	Farm	Latitude	Longitude
0	Sacha 468, Portion 1	27° 40' 10.89" S	22° 58' 47.02" E
1	Sacha 468, Portion 1	27° 40' 9.47" S	22° 58' 38.04" E
2	Sacha 468, Portion 1	27° 40' 8.05" S	22° 58' 29.06" E
3	Sacha 468, Portion 1	27° 40' 6.63" S	22° 58' 20.08" E
4	Sacha 468, Portion 1	27° 40' 7.34" S	22° 58' 11.14" E
5	Sacha 468, Portion 1	27° 40' 9.10" S	22° 58' 2.24" E
6	Sacha 468, Portion 1	27° 40' 10.85" S	22° 57' 53.33" E
7	Sacha 468, Portion 1	27° 40' 12.60" S	22° 57' 44.42" E
8	Sacha 468, Portion 1	27° 40' 14.35" S	22° 57' 35.52" E
9	Sacha 468, Portion 1	27° 40' 16.10" S	22° 57' 26.61" E
10	Nooitgedach 469, Remaining Extent	27° 40' 17.86" S	22° 57' 17.70" E
11	Nooitgedach 469, Remaining Extent	27° 40' 19.61" S	22° 57' 8.79" E
12	Nooitgedach 469, Remaining Extent	27° 40' 21.36" S	22° 56' 59.89" E
13	Nooitgedach 469, Remaining Extent	27° 40' 23.11" S	22° 56' 50.98" E
14	Nooitgedach 469, Remaining Extent	27° 40' 24.86" S	22° 56' 42.07" E
15	Nooitgedach 469, Remaining Extent	27° 40' 26.61" S	22° 56' 33.16" E
16	Nooitgedach 469, Remaining Extent	27° 40' 28.36" S	22° 56' 24.26" E
17	Nooitgedach 469, Remaining Extent	27° 40' 30.11" S	22° 56' 15.35" E
18	Nooitgedach 469, Remaining Extent	27° 40' 31.87" S	22° 56' 6.44" E
19	Nooitgedach 469, Remaining Extent	27° 40' 33.62" S	22° 55' 57.53" E
20	Nooitgedach 469, Remaining Extent	27° 40' 35.37" S	22° 55' 48.62" E
21	Nooitgedach 469, Remaining Extent	27° 40' 37.12" S	22° 55' 39.71" E
22	Nooitgedach 469, Remaining Extent	27° 40' 38.87" S	22° 55' 30.81" E
23	Nooitgedach 469, Remaining Extent	27° 40' 40.62" S	22° 55' 21.90" E
24	Nooitgedach 469, Remaining Extent	27° 40' 42.37" S	22° 55' 12.99" E
25	Nooitgedach 469, Remaining Extent	27° 40' 44.11" S	22° 55' 4.08" E
26	Nooitgedach 469, Remaining Extent	27° 40' 45.86" S	22° 54' 55.17" E
27	Nooitgedach 469, Remaining Extent	27° 40' 47.61" S	22° 54' 46.26" E
28	Nooitgedach 469, Remaining Extent	27° 40' 52.51" S	22° 54' 39.78" E
29	Nooitgedach 469, Remaining Extent	27° 40' 59.28" S	22° 54' 34.74" E
30	Nooitgedach 469, Remaining Extent	27° 41' 6.85" S	22° 54' 34.12" E
31	Nooitgedach 469, Remaining Extent	27° 41' 14.84" S	22° 54' 35.78" E
32	Nooitgedach 469, Remaining Extent	27° 41' 22.82" S	22° 54' 37.45" E
33	Nooitgedach 469, Remaining Extent	27° 41' 30.81" S	22° 54' 39.12" E
34	Nooitgedach 469, Remaining Extent	27° 41' 38.79" S	22° 54' 40.78" E
35	Nooitgedach 469, Remaining Extent	27° 41' 46.78" S	22° 54' 42.45" E
36	Nooitgedach 469, Remaining Extent	27° 41' 54.77" S	22° 54' 44.12" E
37	Nooitgedach 469, Remaining Extent	27° 42' 2.75" S	22° 54' 45.78" E
38	Nooitgedach 469, Remaining Extent	27° 42' 10.74" S	22° 54' 47.45" E
39	Nooitgedach 469, Remaining Extent	27° 42' 18.72" S	22° 54' 49.12" E
40	Nooitgedach 469, Remaining Extent	27° 42' 26.71" S	22° 54' 50.78" E
41	Nooitgedach 469, Remaining Extent	27° 42' 34.69" S	22° 54' 52.45" E

Reference	Farm	Latitude	Longitude
42	Nooitgedacht 469, Remaining Extent	27° 42' 42.68" S	22° 54' 54.12" E
43	Nooitgedacht 469, Remaining Extent	27° 42' 50.66" S	22° 54' 55.78" E
44	Nooitgedacht 469, Remaining Extent	27° 42' 58.65" S	22° 54' 57.45" E
45	Nooitgedacht 469, Remaining Extent	27° 43' 6.63" S	22° 54' 59.12" E
46	Nooitgedacht 469, Remaining Extent	27° 43' 14.62" S	22° 55' 0.79" E
47	Nooitgedacht 469, Remaining Extent	27° 43' 22.60" S	22° 55' 2.45" E
48	Nooitgedacht 469, Remaining Extent	27° 43' 30.59" S	22° 55' 4.12" E
49	Nooitgedacht 469, Remaining Extent	27° 43' 38.58" S	22° 55' 5.79" E
50	Nooitgedacht 469, Remaining Extent	27° 43' 46.56" S	22° 55' 7.46" E
51	Fritz 540, Portion 1	27° 43' 54.58" S	22° 55' 7.34" E
52	Fritz 540, Portion 1	27° 44' 2.62" S	22° 55' 6.07" E
53	Fritz 540, Portion 1	27° 44' 10.67" S	22° 55' 4.80" E
54	Fritz 540, Portion 1	27° 44' 18.71" S	22° 55' 3.53" E
55	Fritz 540, Portion 1	27° 44' 26.75" S	22° 55' 2.26" E
56	Fritz 540, Portion 1	27° 44' 34.80" S	22° 55' 0.99" E
57	Fritz 540, Portion 1	27° 44' 42.84" S	22° 54' 59.72" E
58	Fritz 540, Portion 1	27° 44' 50.88" S	22° 54' 58.44" E
59	Fritz 540, Portion 1	27° 44' 58.92" S	22° 54' 57.17" E
60	Fritz 540, Portion 1	27° 45' 6.97" S	22° 54' 55.90" E
61	Fritz 540, Portion 5	27° 45' 15.01" S	22° 54' 54.63" E
62	Fritz 540, Portion 5	27° 45' 23.05" S	22° 54' 53.36" E
63	Fritz 540, Portion 5	27° 45' 28.57" S	22° 54' 52.49" E