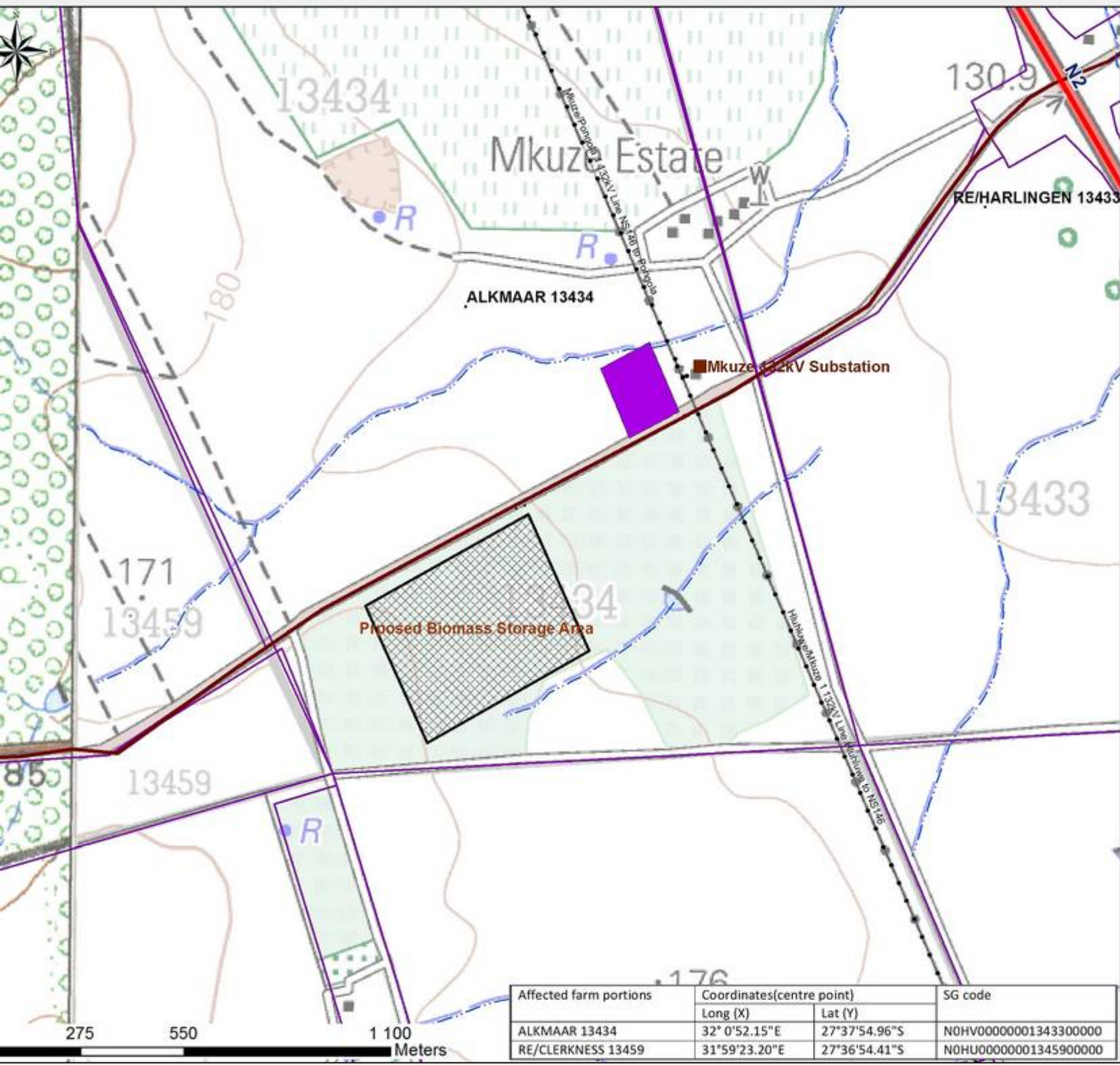


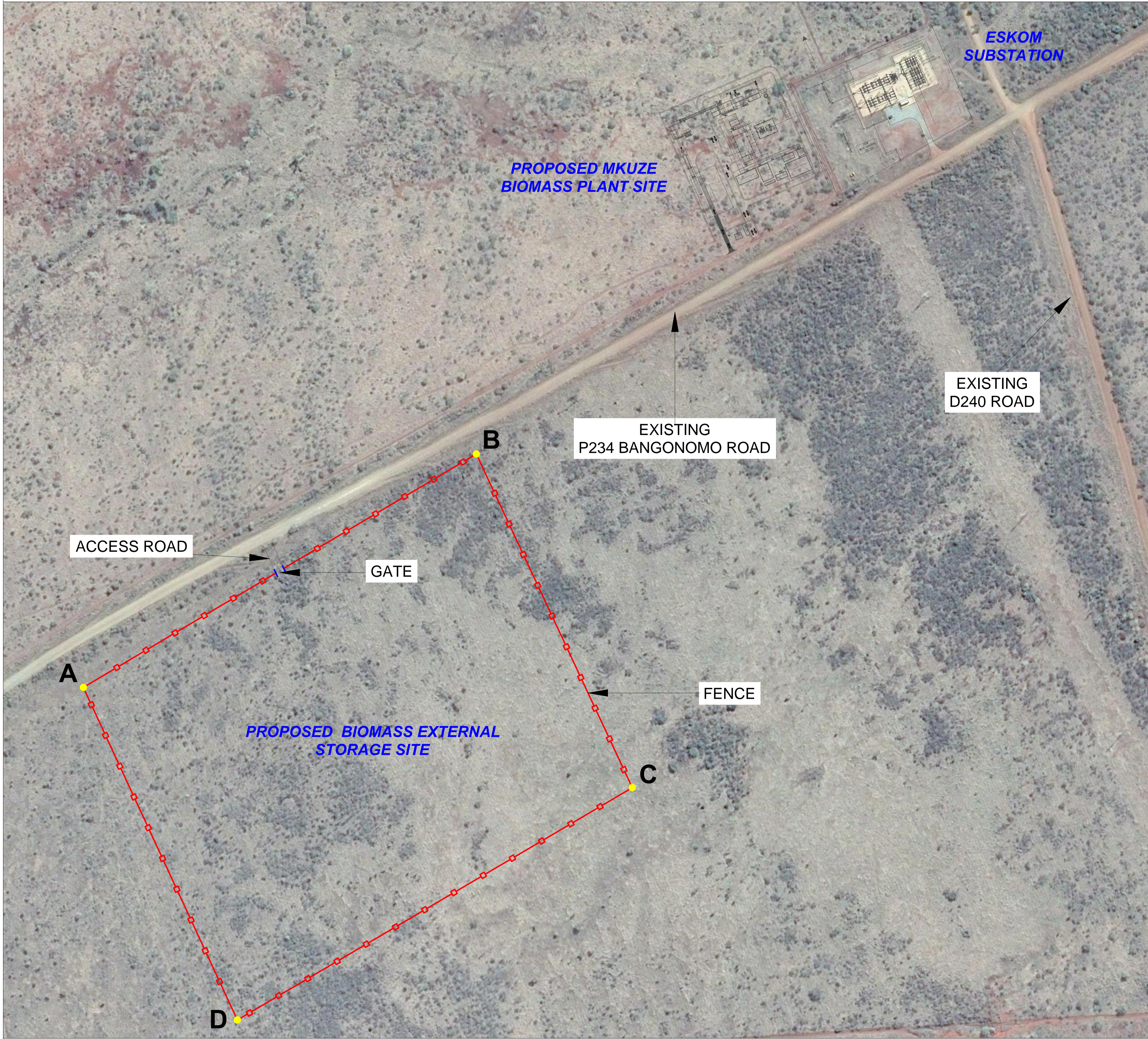
# Mkuze Biomass Storage area Layout Plan



- Legend**
- Distribution substation
  - Eskom Power Line
  - National route
  - Main road
  - Non-perennial river
  - Farm Portions
- Layout Plan:**
- Authorised Mkuzu Biomass power station
  - New Biomass Storage Area



Affected farm portions	Coordinates(centre point)		SG code
	Long (X)	Lat (Y)	
ALKMAAR 13434	32° 0'52.15"E	27°37'54.96"S	N0HV00000001343300000
RE/CLERKNESS 13459	31°59'23.20"E	27°36'54.41"S	N0HU00000001345900000



SITE LOCATION [NTS]



GENERAL NOTES

- All works shall comply to all pertinent local codes, laws, ordinance, rules and regulations.

Area to be cleared - 20 hectares

COORDINATES (UTM WGS84) 36 J

MKUZE BIOMASS EXTERNAL STORAGE (LAND) - BOUNDARY

	<i>Easting</i>	<i>Northing</i>
A	402113.18	6942584.37
B	402543.84	6942838.04
C	402710.28	6942477.94
D	402282.73	6942223.26

**BIOMASS PLANT DESIGN**

MKUZE BIOMASS EXTERNAL STORAGE  
KwaZulu-Natal, South Africa

00	03 February 2015	First Issue	EN	LS	MN
REVIEW	DATE	DESCRIPTION	PREPARED	CHECKED	APPROVED

CLIENT	
DESIGNER	DOCUMENT TITLE <b>PRELIMINARY LAYOUT OF MKUZE BIOMASS EXTERNAL STORAGE</b>
DATE 03 Feb 2015	SCALE 1:2000
DOCUMENT NUMBER	REVIEW 00
	SHEET 00

DESCRIPTION AND NOTE