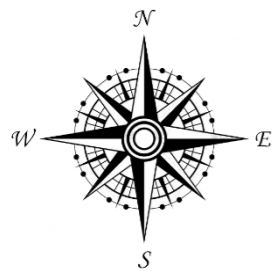
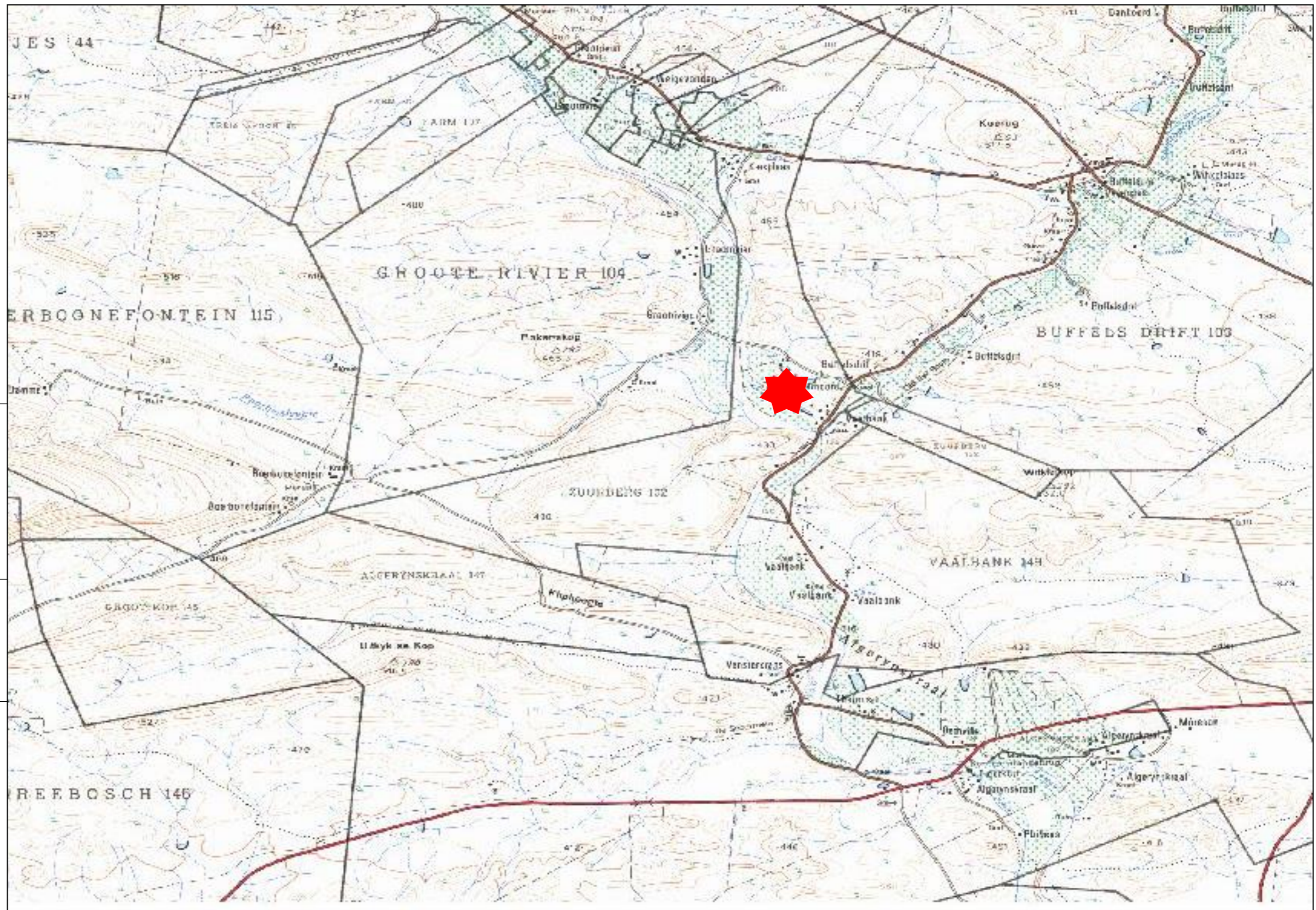


Ledgend

★ Site



WESTERN CAPE PROVINCIAL LOCALITY MAP



LOCALITY MAP: APPLICATION FOR RECTIFICATION IN TERMS OF SECTION 24G OF THE NATIONAL ENVIRONMENTAL MANAGEMENT ACT (ACT 107 OF 1998) FOR THE UNLAWFUL COMMENCEMENT VEGETATION CLEARANCE AND TOPSOIL DISTURBANCE OF MORE THAN 1 HECTARE, THE CONSTRUCTION OF AN EMBANKMENT WITHIN 32 METRES OF THE GROOT RIVER AND THE DEVELOPMENT OF AN OFF-STREAM STORAGE DAM ON THE FARM ZUURBERG NO. 288, LADISMITH, WESTERN CAPE PROVINCE.



Adopted from the 1:10 000 Topographical Map

GPS

-33 ° 33 ' 7.42 " S
21 ° 7 ' 9.74 " E

Project No.:

2018 - 10