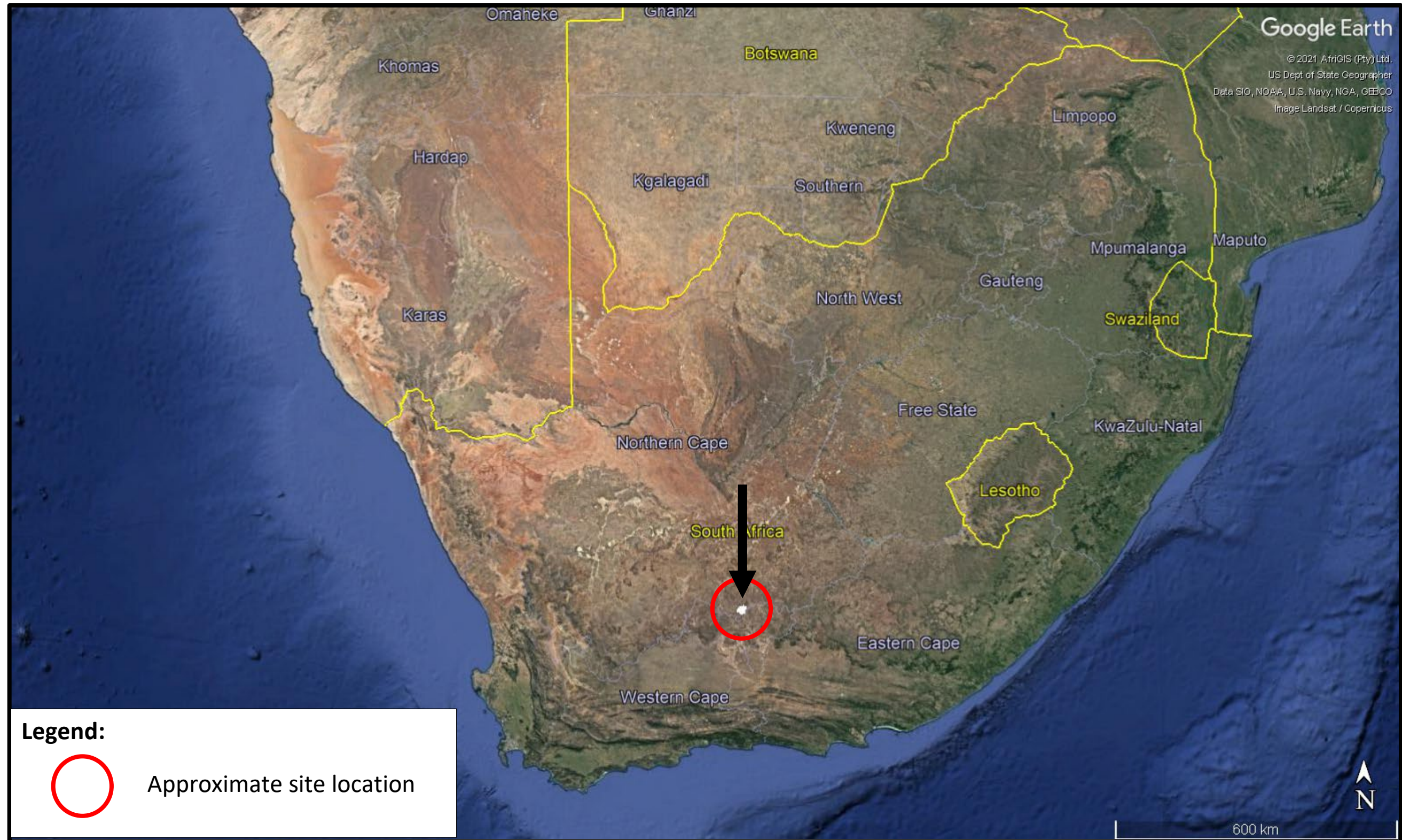


APPENDIX A: Locality Map – Broad Geographical Context – Noblesfontein WEF



Site Locality Map

Figure for Illustrative Purposes Only

Terramanzi Environmental Consulting Project No. 210302 (June 2021)



tel: +27 21 701 5228
fax: +27 86 558 1213
mobile: +27 82 575 3800
email: info@terramanzi.co.za
website: www.terramanzi.co.za
postal: postnet suite 211, private bag X26, tokai, 7966

APPENDIX A: Locality Map – Local Context – Noblesfontein WEF



Site Locality Map

Figure for Illustrative Purposes Only

Terramanzi Environmental Consulting Project No. 210302 (June 2021)

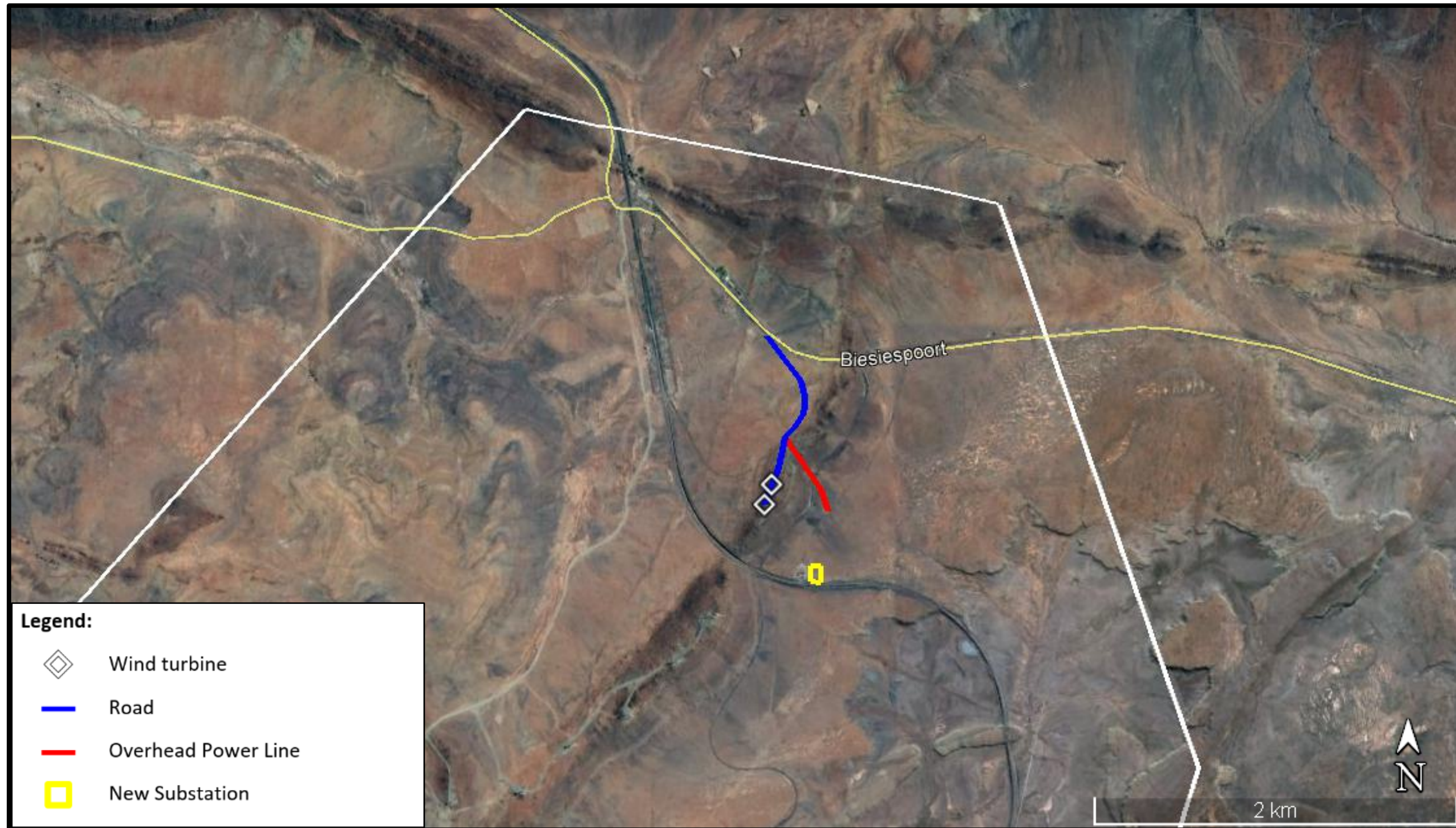


tel: +27 21 701 5228
fax: +27 86 558 1213
mobile: +27 82 575 3800

email: info@terramanzi.co.za
website: www.terramanzi.co.za

postal: postnet suite 211, private bag X26, tokai, 7966

APPENDIX A: Locality Map – Noblesfontein WEF Upgrades



Proposed Layout

Figure for Illustrative Purposes Only

Terramanzi Environmental Consulting Project No. 210302 (June 2021)



tel: +27 21 701 5228
fax: +27 86 558 1213
mobile: +27 82 575 3800
email: info@terramanzi.co.za
website: www.terramanzi.co.za
postal: postnet suite 211, private bag X26, tokai, 7966

APPENDIX A: Locality Map – Noblesfontein Farm Portions



Noblesfontein WEF

Figure for Illustrative Purposes Only
 Terramanzi Environmental Consulting Project No. 210302 (June 2021)



tel: +27 21 701 5228
 fax: +27 86 558 1213
 mobile: +27 82 575 3800
 email: info@terramanzi.co.za
 website: www.terramanzi.co.za
 postal: postnet suite 211, private bag X26, tokai, 7966