

# LOCALITY MAP











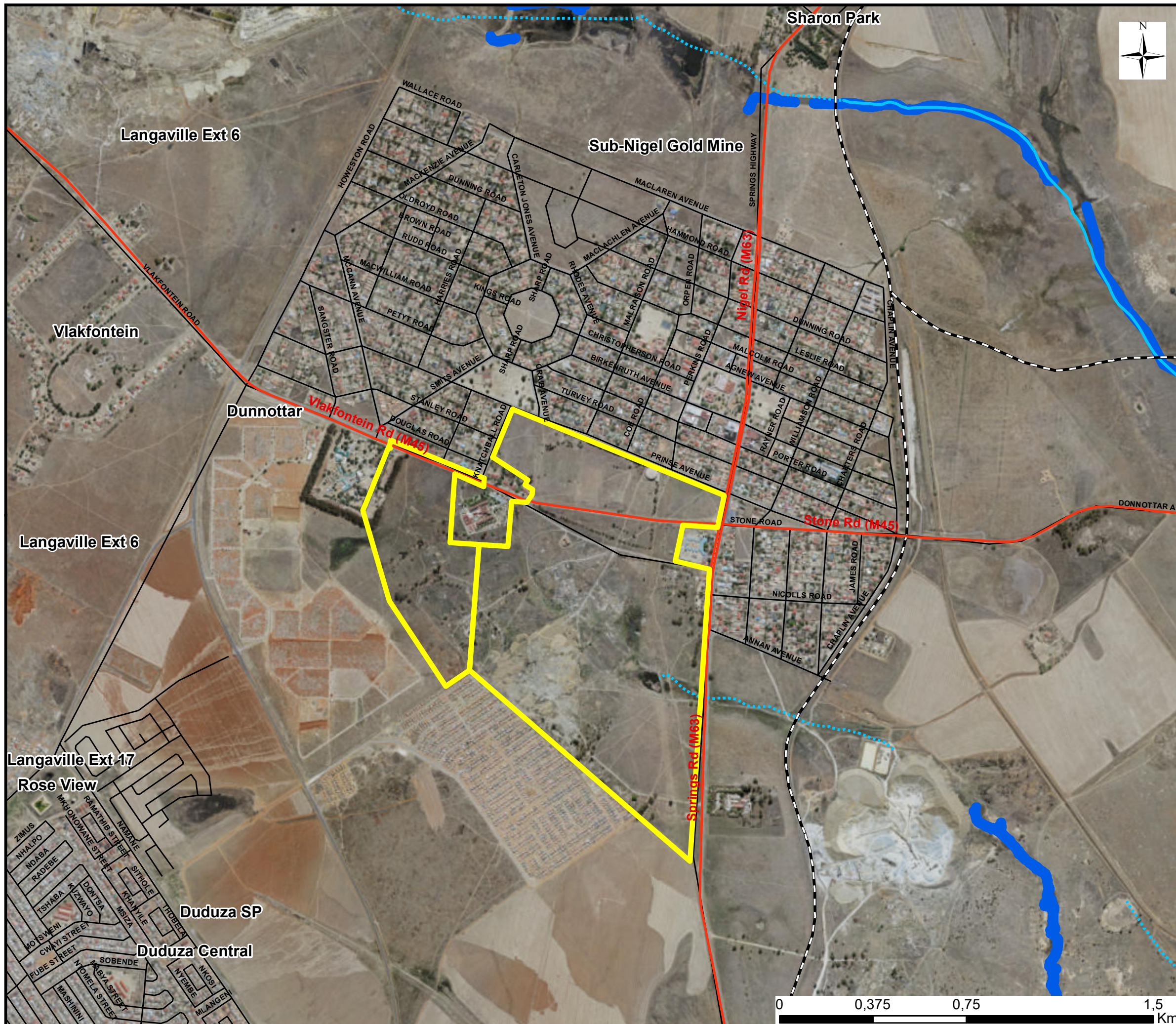
**John Dube Ext 3 Township Establishment  
on Portions of RE 1 and 83 of the  
Farm Grootfontein 165 IR**

**LOCALITY MAP**

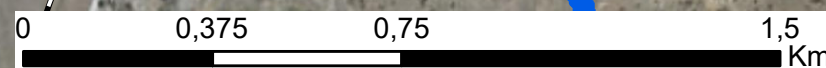


**Legend**

-  Proposed site
-  Regional Road
-  Main Road
-  Streets
-  Railway Line
-  Perennial River
-  Non-Perennial River
-  River buffer



Projection: LO25  
Scale: 1:15 000





---

## **SENSITIVITY MAPS**

---

---

## **Gauteng C-Plan Sensitivity Map**

---



**John Dube Ext 3 Township Establishment  
on Portions of RE 1 and 83 of the  
Farm Grootfontein 165 IR**





C-Plan



**Legend**

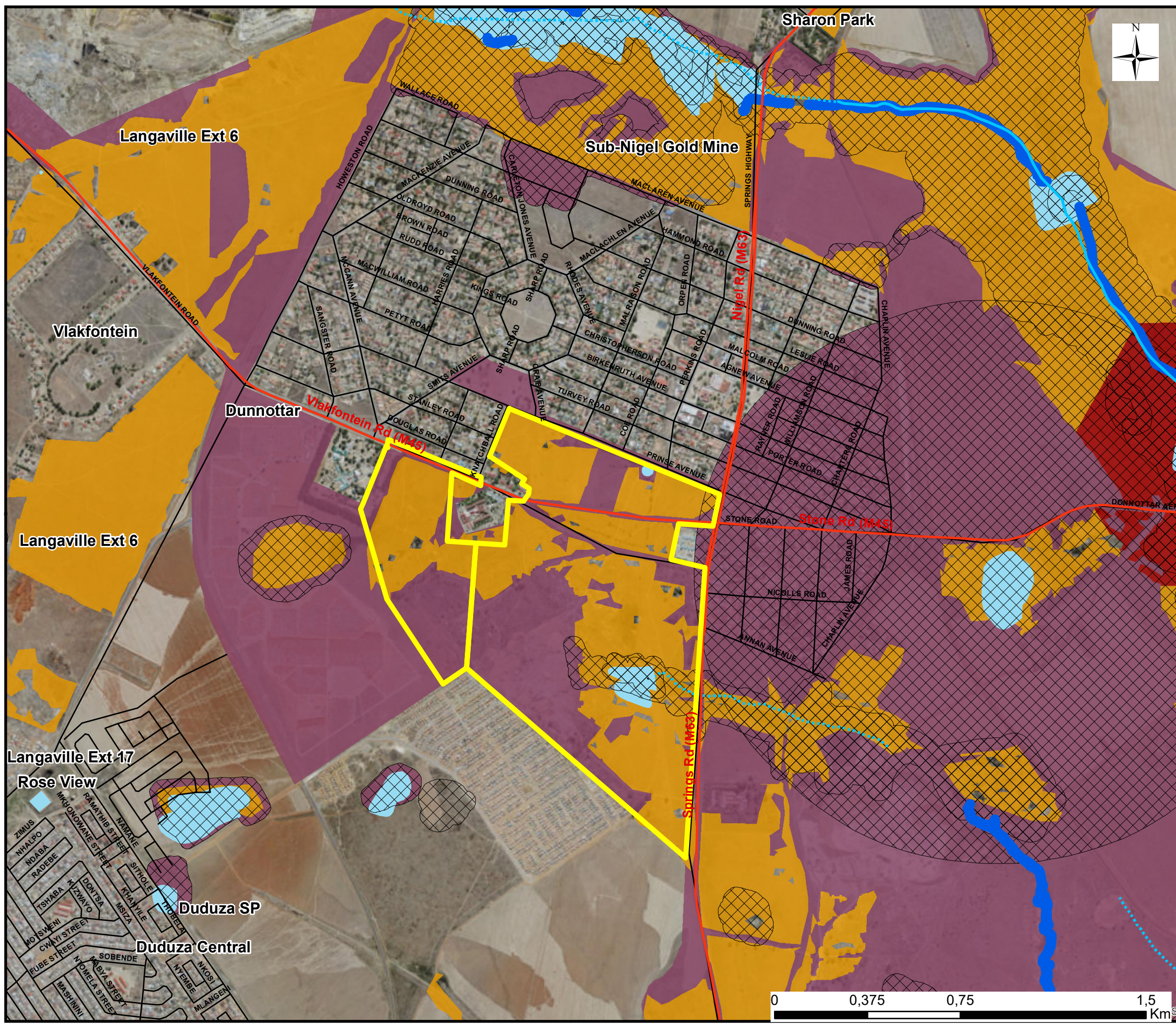
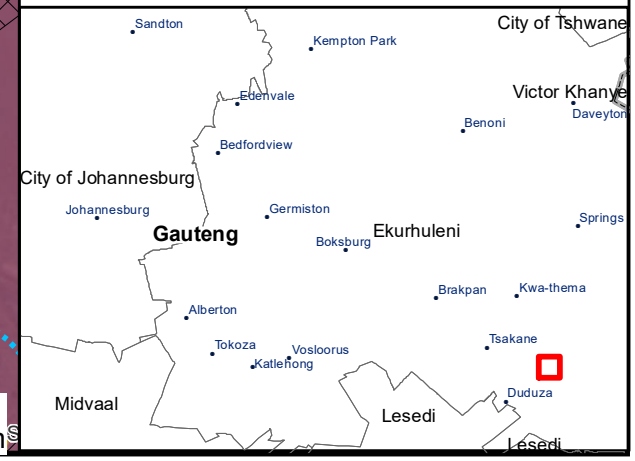
-  Proposed site
-  Regional Road
-  Main Road
-  Streets
-  Perennial River
-  Non-Perennial River
-  River buffer
-  Wetlands
-  Wetland buffers

**C-PLAN**

-  Irreplaceable Area
-  Important Area
-  Ecological Support Area
-  Protected Area



Projection: LO25  
Scale: 1:15 000



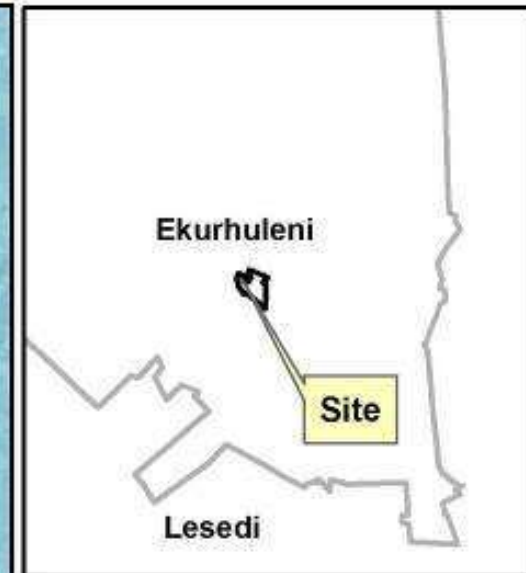


---

## Hydrology & Wetland Sensitivity Map

---



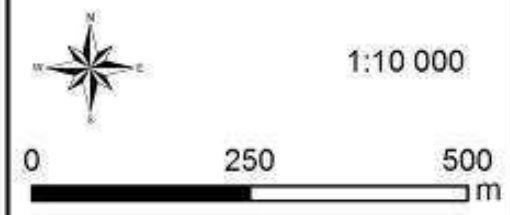


**DUNNOTTAR  
HYDROLOGY**

**Legend**

-  Site Boundary
-  River & Buffer
-  Wetland & Buffer

References:  
Aerial Image: NGI  
Hydrology: GDARD



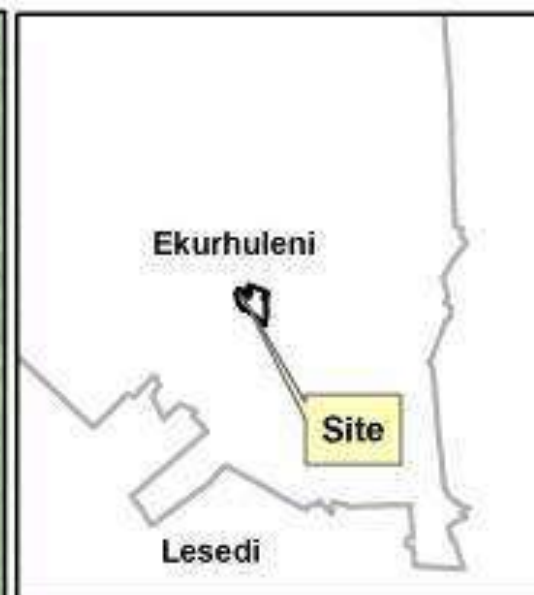
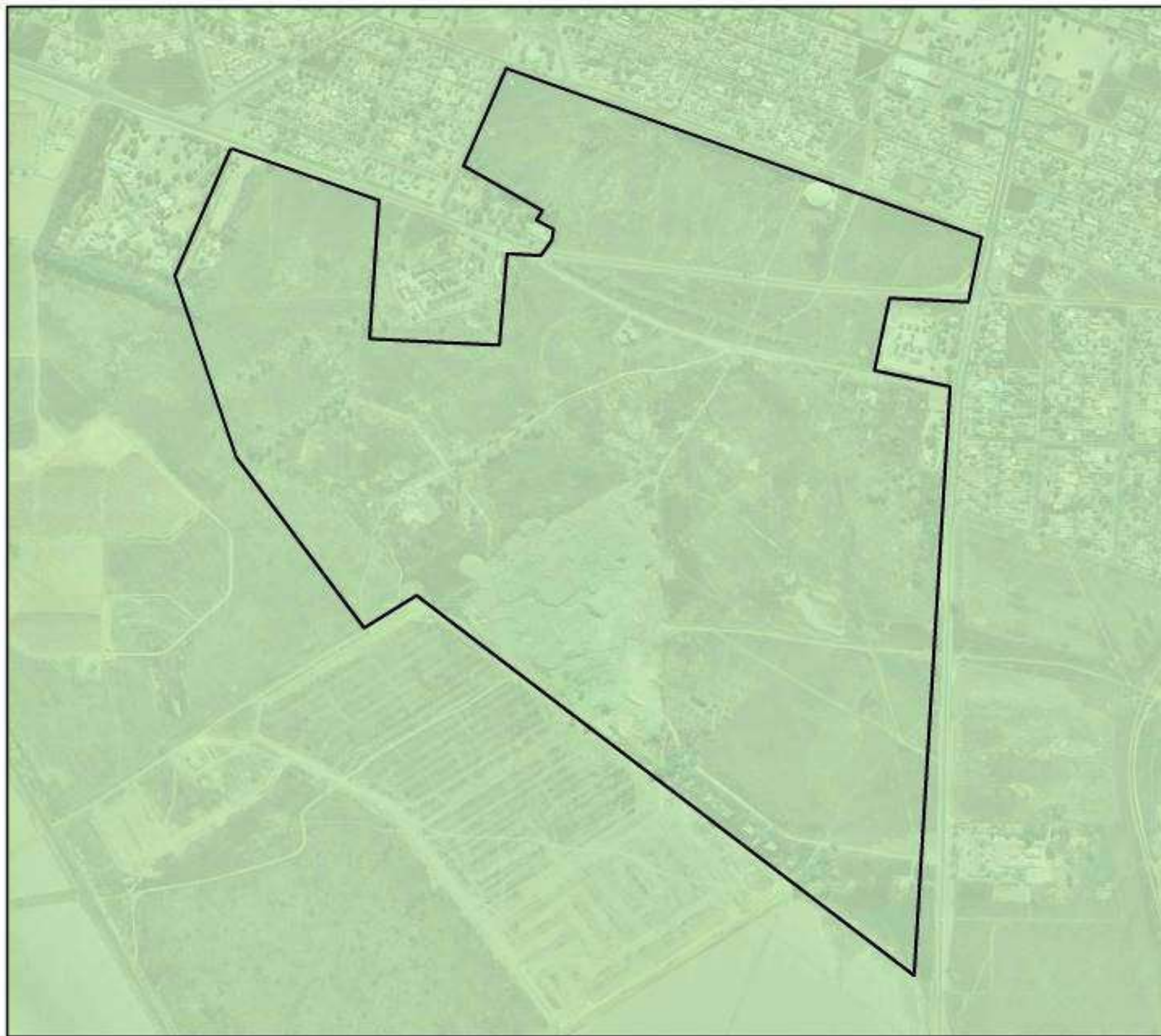


---

## **Regional Vegetation Sensitivity Map**


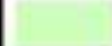
---






**DUNNOTTAR  
VEG MAP**

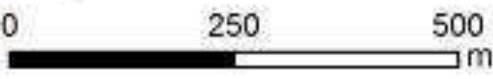
**Legend**

-  Site Boundary
-  Tsakane Clay Grassland

References:  
Aerial Image: NGI  
Veg Map: Mucina & Rutherford



1:10 000



0 250 500 m