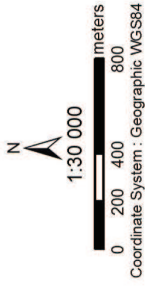


# West Riding Reservoir EIA Site Locality

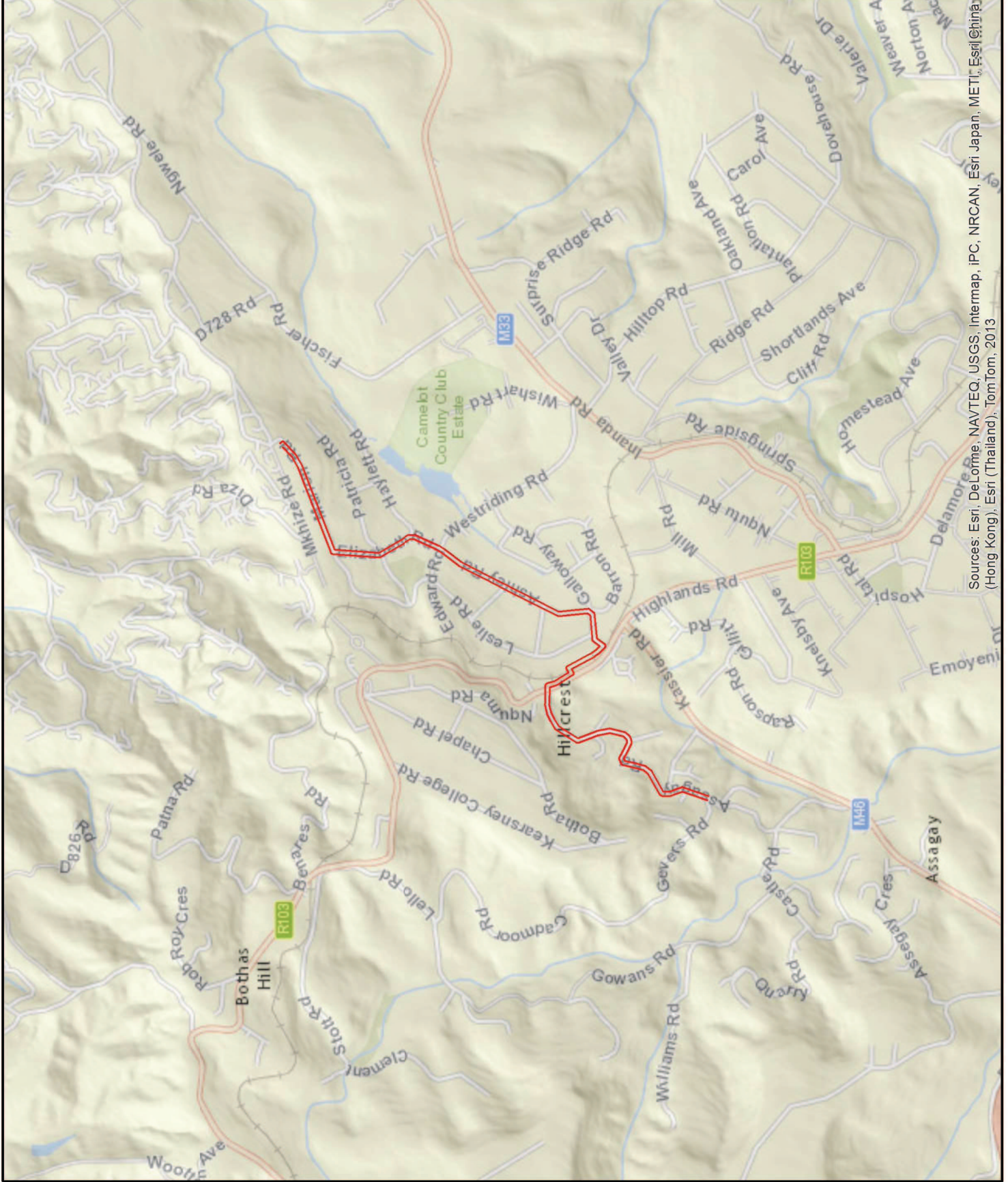


**GIBB**  
ENGINEERING & ARCHITECTURE  
Gibb Contact Details: Tel:(011)5194600



## Legend

- West riding route
- Study Area

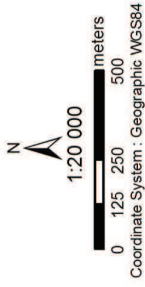


Sources: Esri, DeLorme, NAVTEQ, USGS, Intermap, iPC, NRCAN, Esri Japan, METI, Esri (China), Swire, (Hong Kong), Esri (Thailand), TomTom, 2013



# West Riding Reservoir EIA

## Site Locality



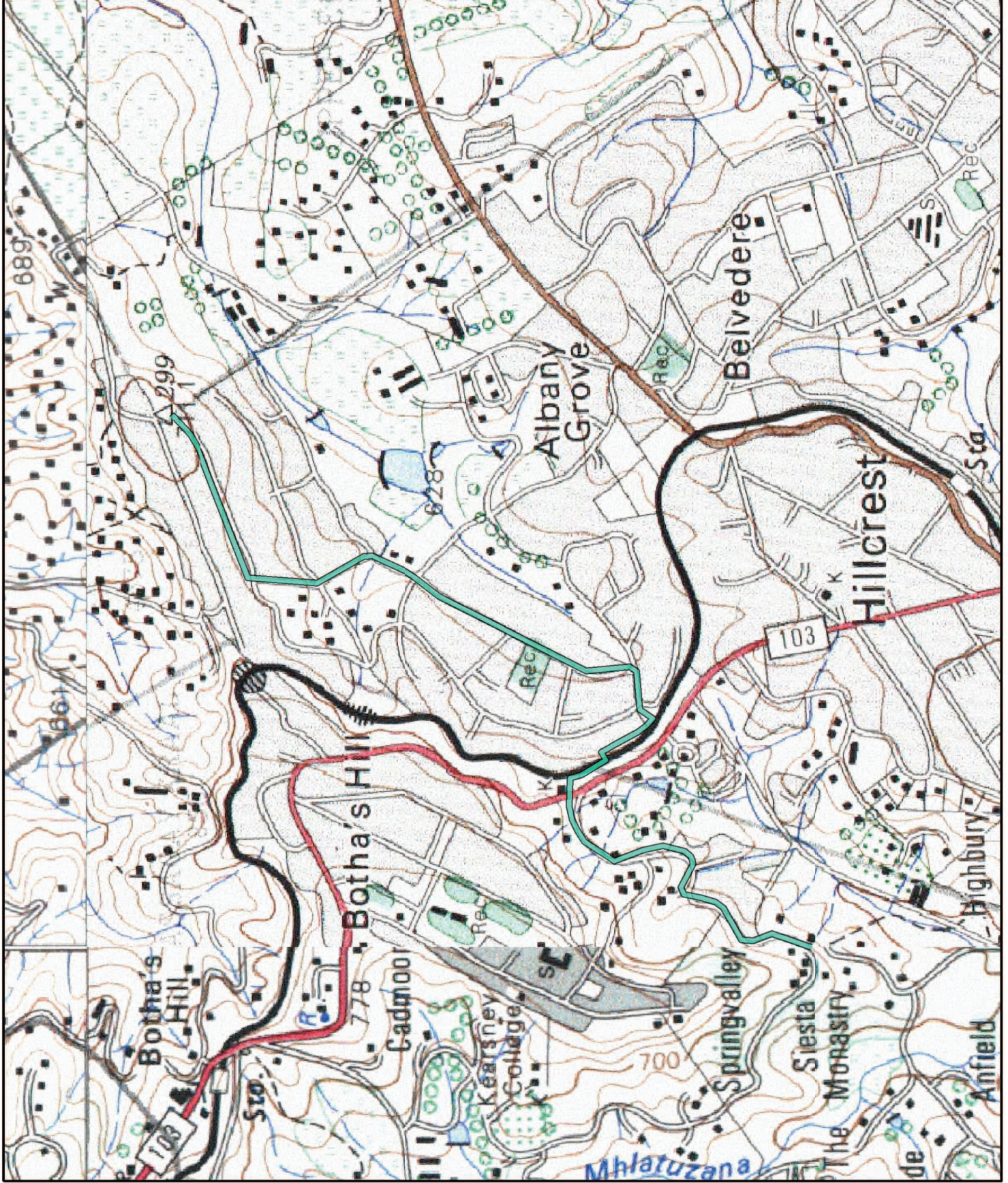
**GIBB**  
ENGINEERING & ARCHITECTURE

Gibb Contact Details: Tel(011)5194600



### Legend

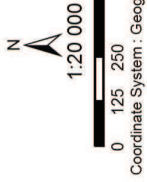
West riding route





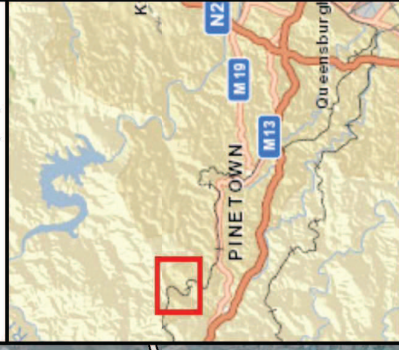
# West Riding Reservoir EIA

## Site Locality



ENGINEERING & ARCHITECTURE

Gibb Contact Details: Tel(011)5194600



### Legend

- West riding route
- Railway Line
- Roads
  - Main Road
  - Regional Road



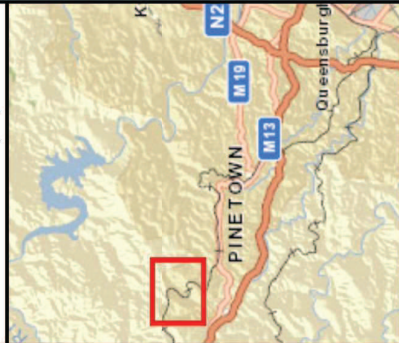
Source: Esri, DigitalGlobe, GeoEye, i-cubed, USDA, USGS, AEX, Getmapping, Aerogrid, IGN, IGP, swisstopo, and the GIS User Community



# West Riding Reservoir EIA Hydrology

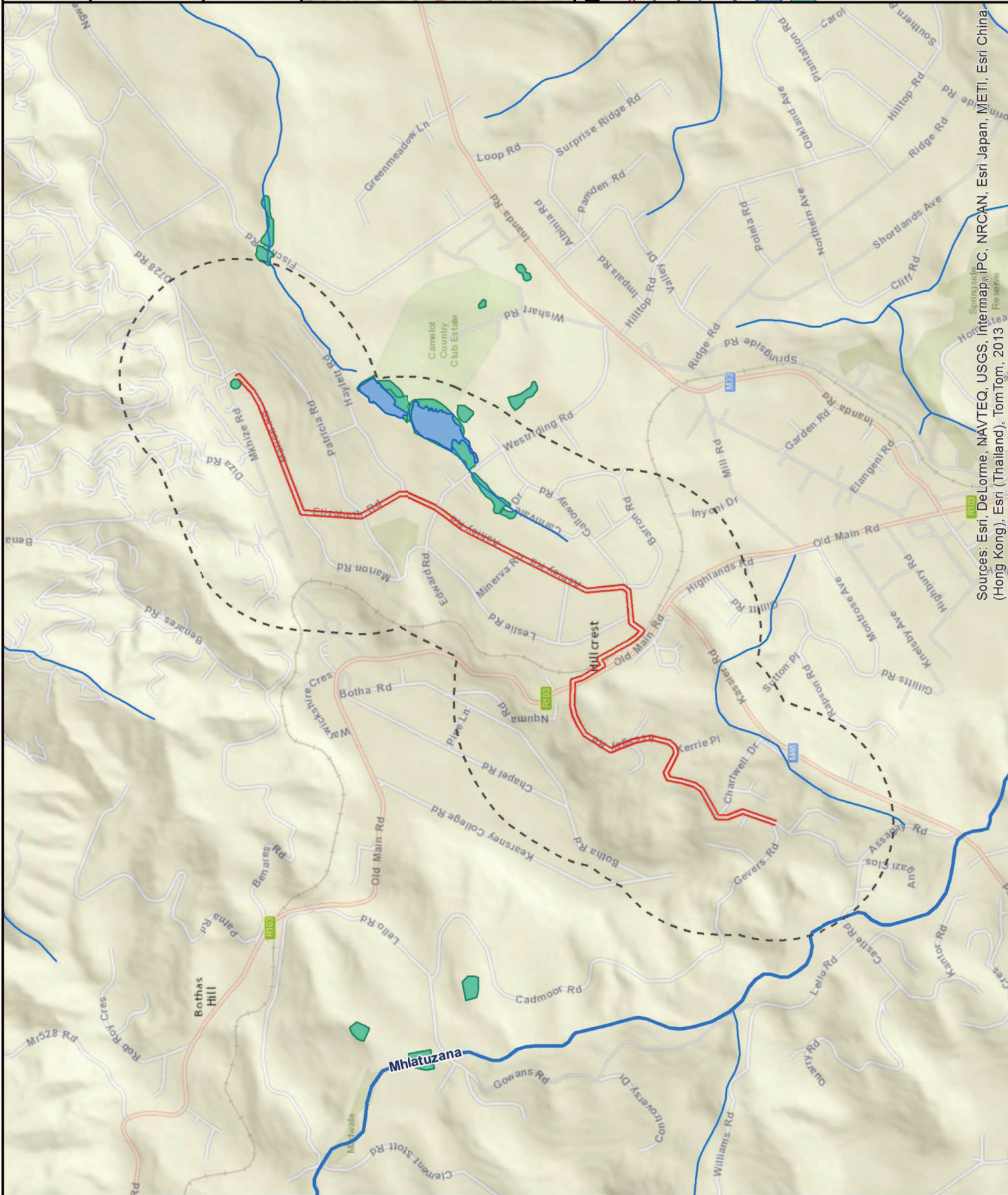


**GIBB**  
ENGINEERING & ARCHITECTURE  
Gibb Contact Details: Tel(011)5194600



## Legend

- West riding route
- Route 500m buffer
- Drainage Lines
- Major Rivers
- Water Bodies
- NFEPA Wetlands

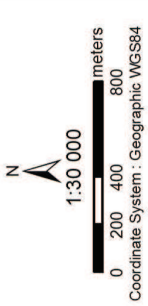


Sources: Esri, DeLorme, NAVTEQ, USGS, Intermap, iPC, NRCAN, Esri Japan, METI, Esri China (Hong Kong), Esri (Thailand), TomTom, 2013



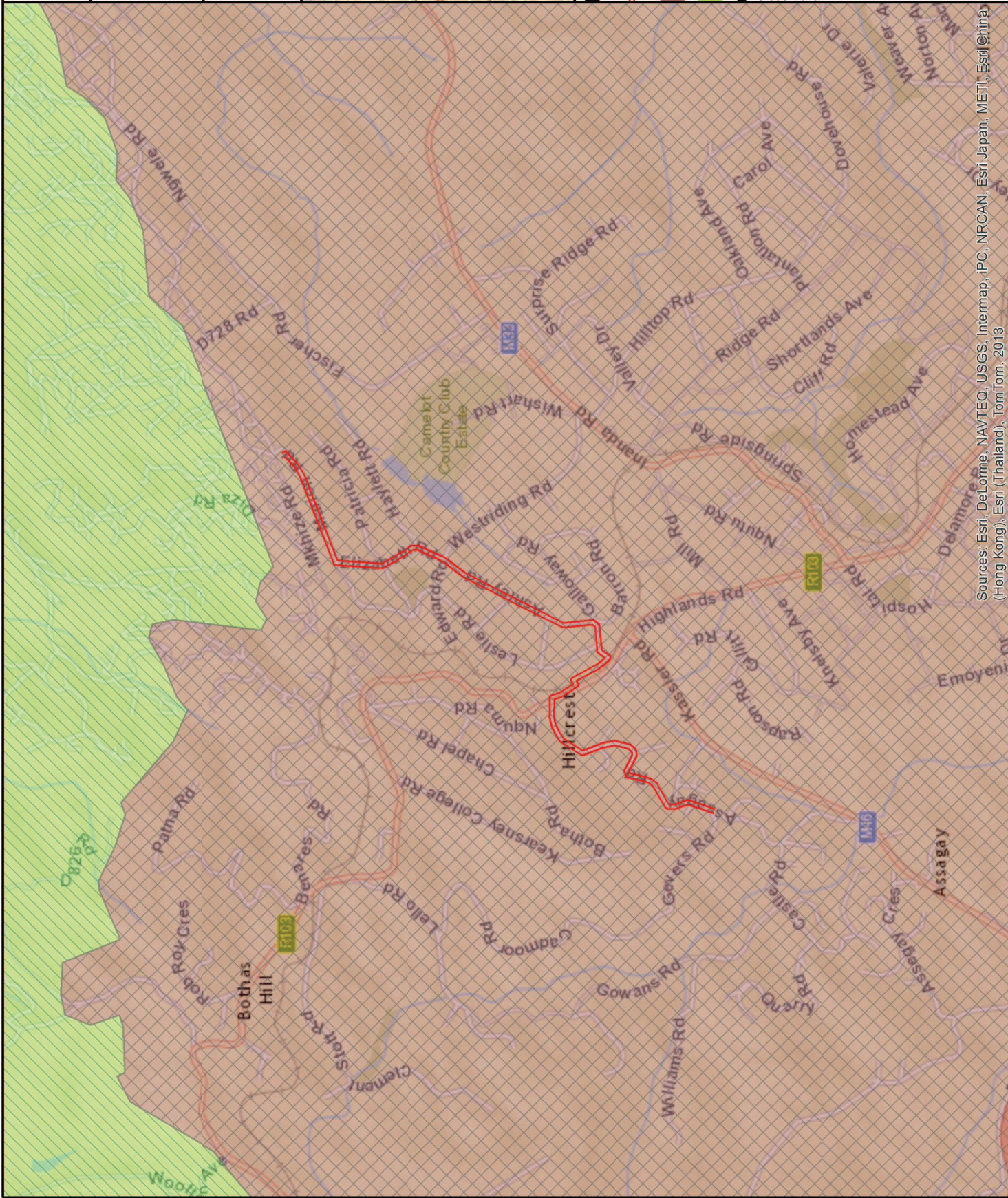
# West Riding Reservoir EIA

## Vegetation Conservation Status



### Legend

- West riding route
  - KwaZulu-Natal Sandstone Sourveld
  - Ngongoni Veld
- ### Conservation Status
- Endangered
  - Vulnerable

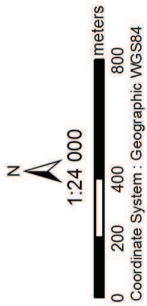


Sources: Esri, DeLorme, NAVTEQ, USGS, Intermap, iPC, NRCAN, Esri Japan, METI, Esri (China) (Hong Kong), Esri (Thailand), TomTom, 2013



# West Riding Reservoir EIA

## Terrestrial Conservation Plan

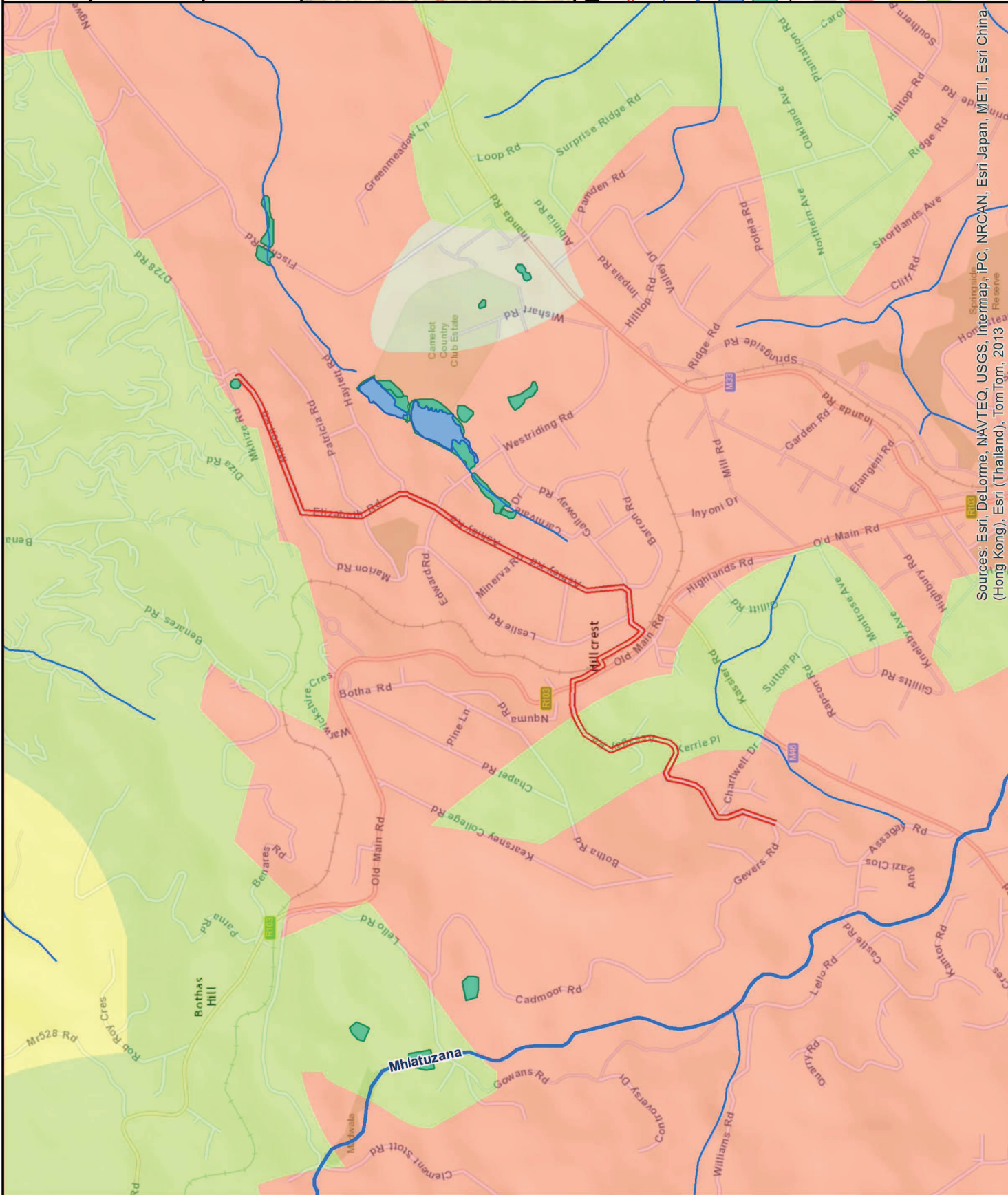


### Legend

- West riding route
- Drainage Lines
- Major Rivers
- Water Bodies
- NFEPA Wetlands

### Terrestrial Conservation Plan

- 100% Transformed (2005 LC)
- Critical Biodiversity Area 1 Mandatory
- Critical Biodiversity Area 3 Optimal
- Biodiversity Area



Sources: Esri, DeLorme, NAVTEQ, USGS, Intermap, iPC, NRCAN, Esri Japan, METI, Esri China (Hong Kong), Esri (Thailand), TomTom, 2013