

DRAFT BASIC ASSESSMENT REPORT

Basic Assessment for the proposed
Decommissioning and Upgrade of a Bulk
Liquid Storage and Handling Facility at
Maydon Wharf, Port of Durban, KwaZulu-Natal

SECTION G: APPENDICES

SECTION G: APPENDICES

Draft Basic Assessment Report for the proposed Decommissioning and Upgrade of a Bulk Liquid Storage and Handling Facility at Maydon Wharf, Port of Durban, KwaZulu-Natal

APPENDIX A: SITE PLANS

Appendix A.1:	Project Layout Map (1:500)
Appendix A.2:	Locality Map (Adjacent Properties and Land Use)
Appendix A.3:	Layout Map (Adjacent Properties)
Appendix A.4:	Detailed Layout Map
Appendix A.5:	Existing and Proposed Infrastructure Map
Appendix A.6:	Road Infrastructure Map
Appendix A.7:	Environmental Features Map
Appendix A.8:	Co-ordinates of Project Components

APPENDIX B: PHOTOGRAPHS

Appendix B.1:	PHOTOGRAPHS • Photo Point 1
Appendix B.2:	PHOTOGRAPHS • Photo Point 2
Appendix B.3:	PHOTOGRAPHS • Photo Point 2
Appendix B.4:	Additional Photographs
Appendix B.5:	Vegetation on and adjacent to the site

APPENDIX C: FACILITY ILLUSTRATIONS

Appendix C.1:	Alternative 1 (Preferred Alternative) – Phase 1
Appendix C.2:	Alternative 1 (Preferred Alternative) – Phase 2 – Option 1
Appendix C.3:	Alternative 1 – Phase 2 – Option 2
Appendix C.4:	Alternative 2 – No construction phasing

APPENDIX D: SPECIALIST REPORTS

Appendix D.1:	Traffic Impact Assessment
Appendix D.2:	Risk Assessment
Appendix D.3:	Noise Impact Assessment
Appendix D.4:	Visual Impact Assessment

APPENDIX E: COMMENTS AND RESPONSES REPORT

APPENDIX F: DRAFT ENVIRONMENTAL MANAGEMENT PROGRAMME (EMPr)

APPENDIX G: OTHER INFORMATION

Appendix G.1:	References used in Draft BA Report
Appendix G.2:	Letter submitted to KZN DEDTEA to downgrade the project
Appendix G.3:	Letter of approval from KZN DEDTEA to downgrade the project
Appendix G.4:	Application Form for Environmental Authorisation submitted to KZN DEDTEA
Appendix G.5:	Acknowledgement of Receipt and Acceptance of Application Form
Appendix G.6:	Details of EAP and Expertise
Appendix G.7:	Curriculum Vitae of Specialists and Declaration of Interest
Appendix G.8:	Impact Assessment Tables

APPENDIX H: PUBLIC PARTICIPATION

Appendix H.1:	Public Participation Report
Appendix H.2:	Site Notice Board and Proof of Placement
Appendix H.3:	Newspaper Advertisements and Proof of Placement
Appendix H.4:	Correspondence Sent to I&APs and Stakeholders during the 30-day Review of the BID
Appendix H.5:	Database of I&APs and Organs of State
Appendix H.6:	Copies of Comments Received during the 30-day Review of the BID

SECTION G: APPENDICES

Draft Basic Assessment Report for the proposed Decommissioning and Upgrade of a Bulk Liquid Storage and Handling Facility at Maydon Wharf, Port of Durban, KwaZulu-Natal



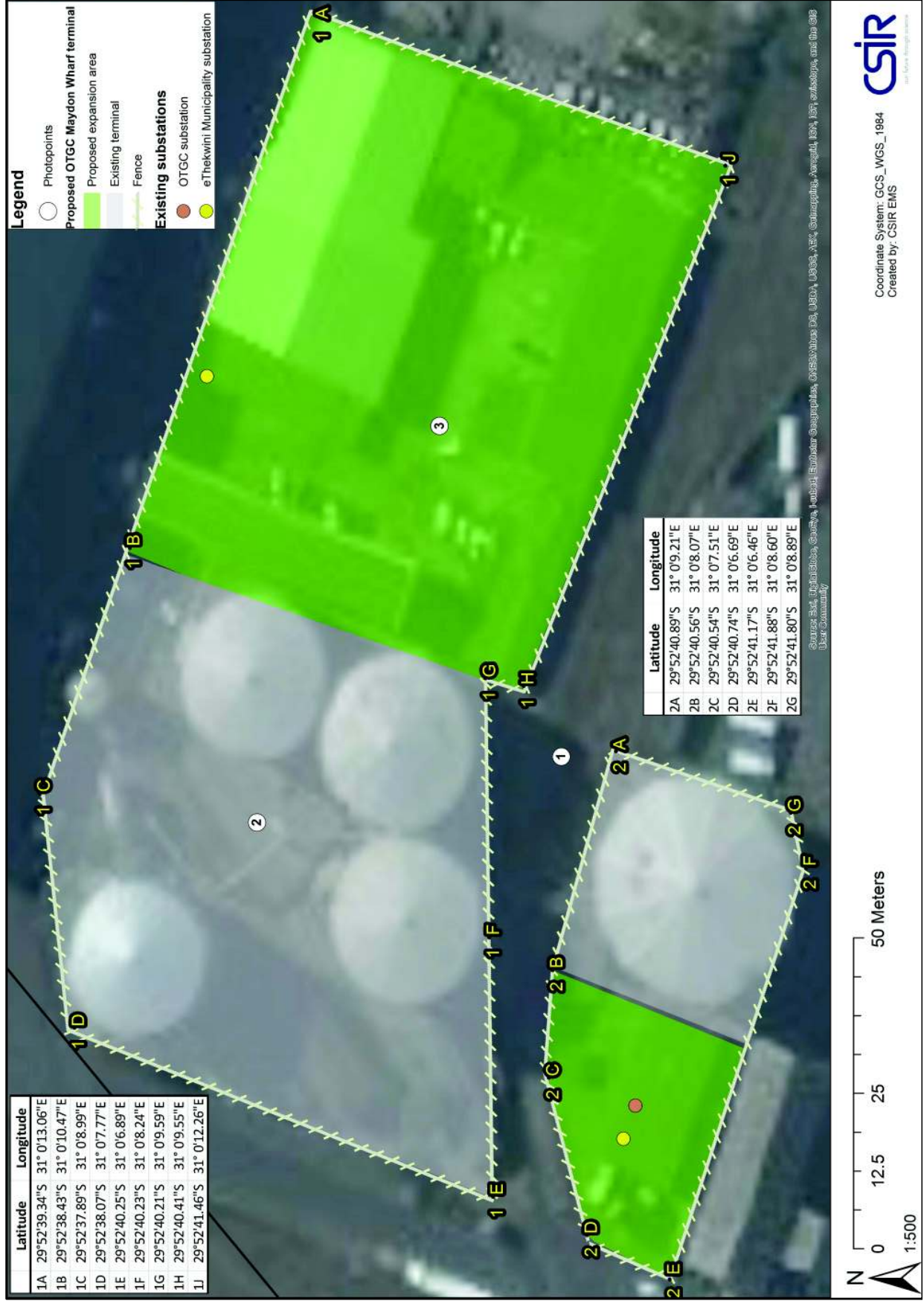
contents

Appendix A.1:	Project Layout Map (1:500)	2
Appendix A.2:	Locality Map (Adjacent Properties and Land Use)	3
Appendix A.3:	Layout Map (Adjacent Properties)	4
Appendix A.4:	Detailed Layout Map	5
Appendix A.5:	Existing and Proposed Infrastructure Map	6
Appendix A.6:	Road Infrastructure Map	7
Appendix A.7:	Environmental Features Map	8
Appendix A.8:	Co-ordinates of Project Components	9

SECTION G : APPENDICES

Draft Basic Assessment Report for the proposed Decommissioning and Upgrade of a Bulk Liquid Storage and Handling Facility at Maydon Wharf, Port of Durban, Kwazulu-Natal

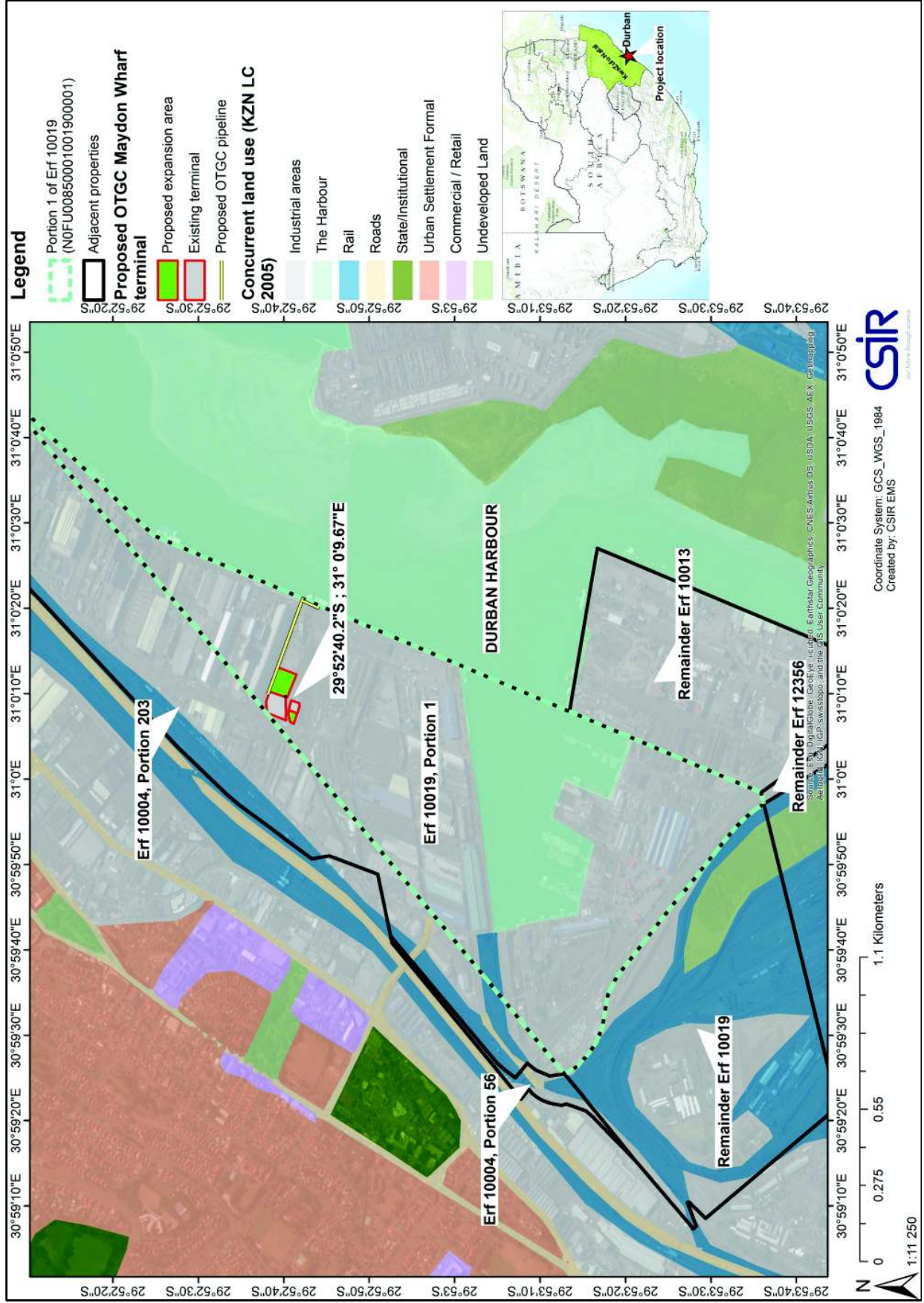
Appendix A.1: Project Layout Map (1:500)



SECTION G : APPENDICES

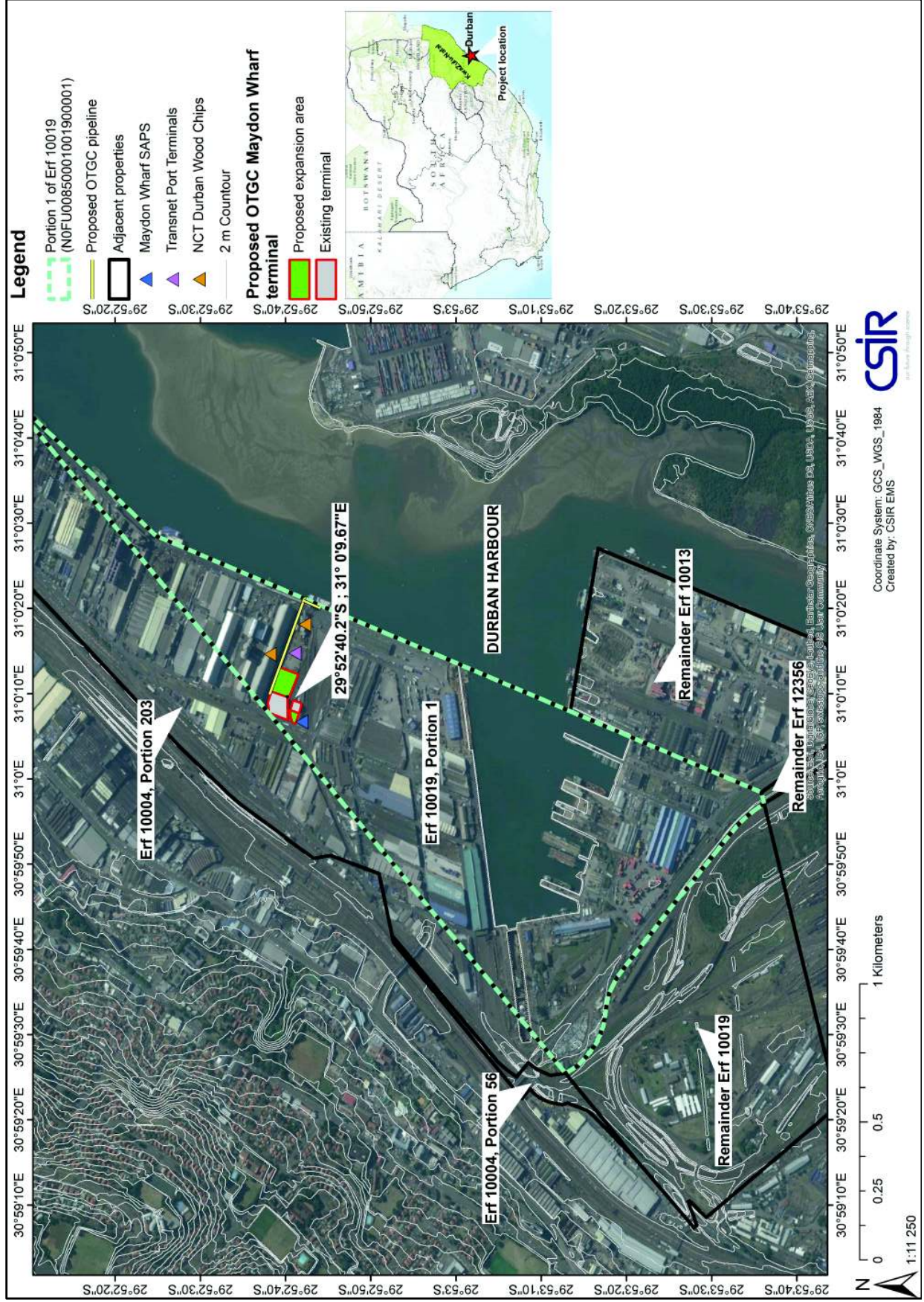
Draft Basic Assessment Report for the proposed Decommissioning and Upgrade of a Bulk Liquid Storage and Handling Facility at Maydon Wharf, Port of Durban, Kwazulu-Natal

Appendix A.2: Locality Map (Adjacent Properties and Land Use)



SECTION G : APPENDICES

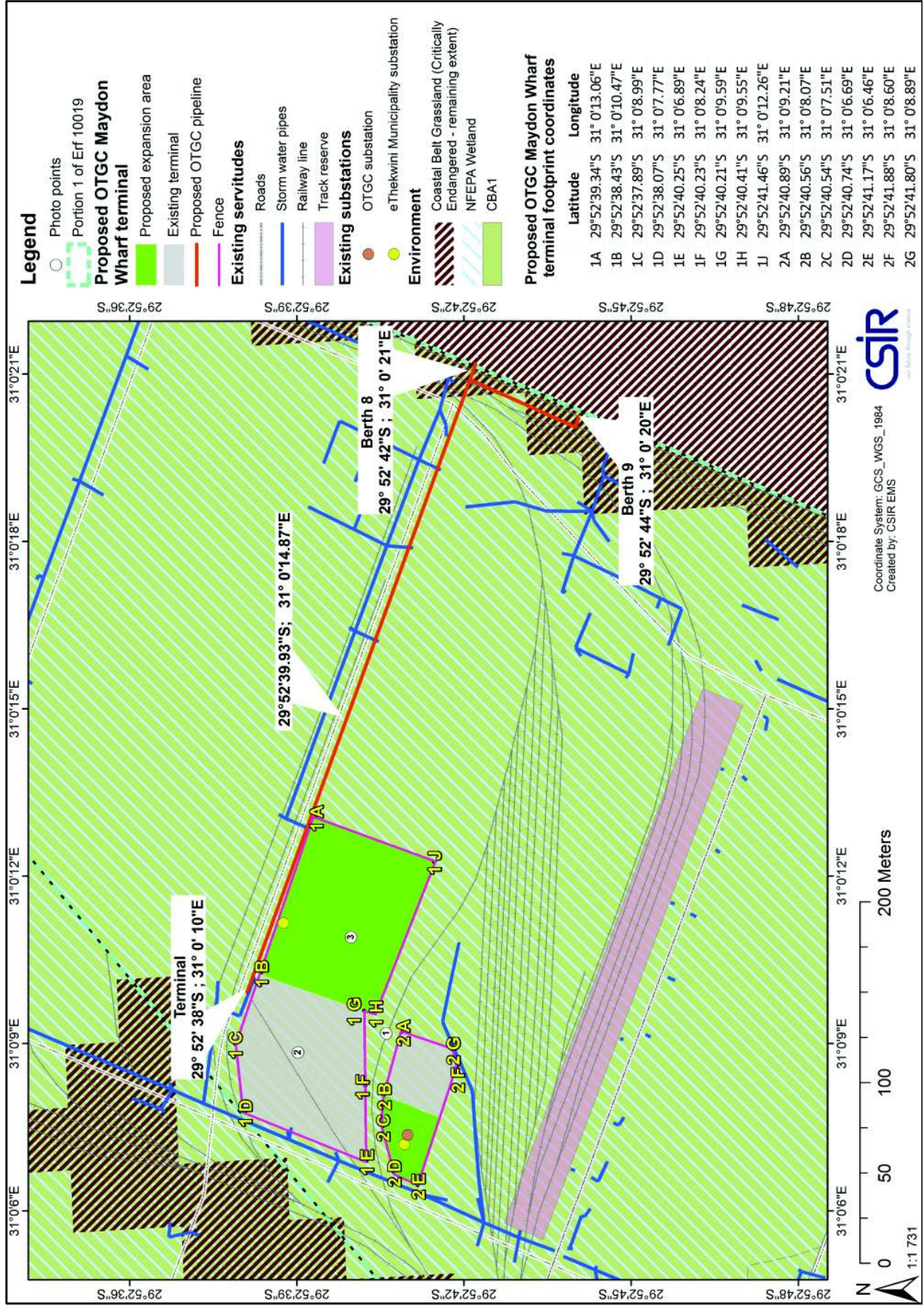
Appendix A.3: Layout Map (Adjacent Properties)



SECTION G : APPENDICES

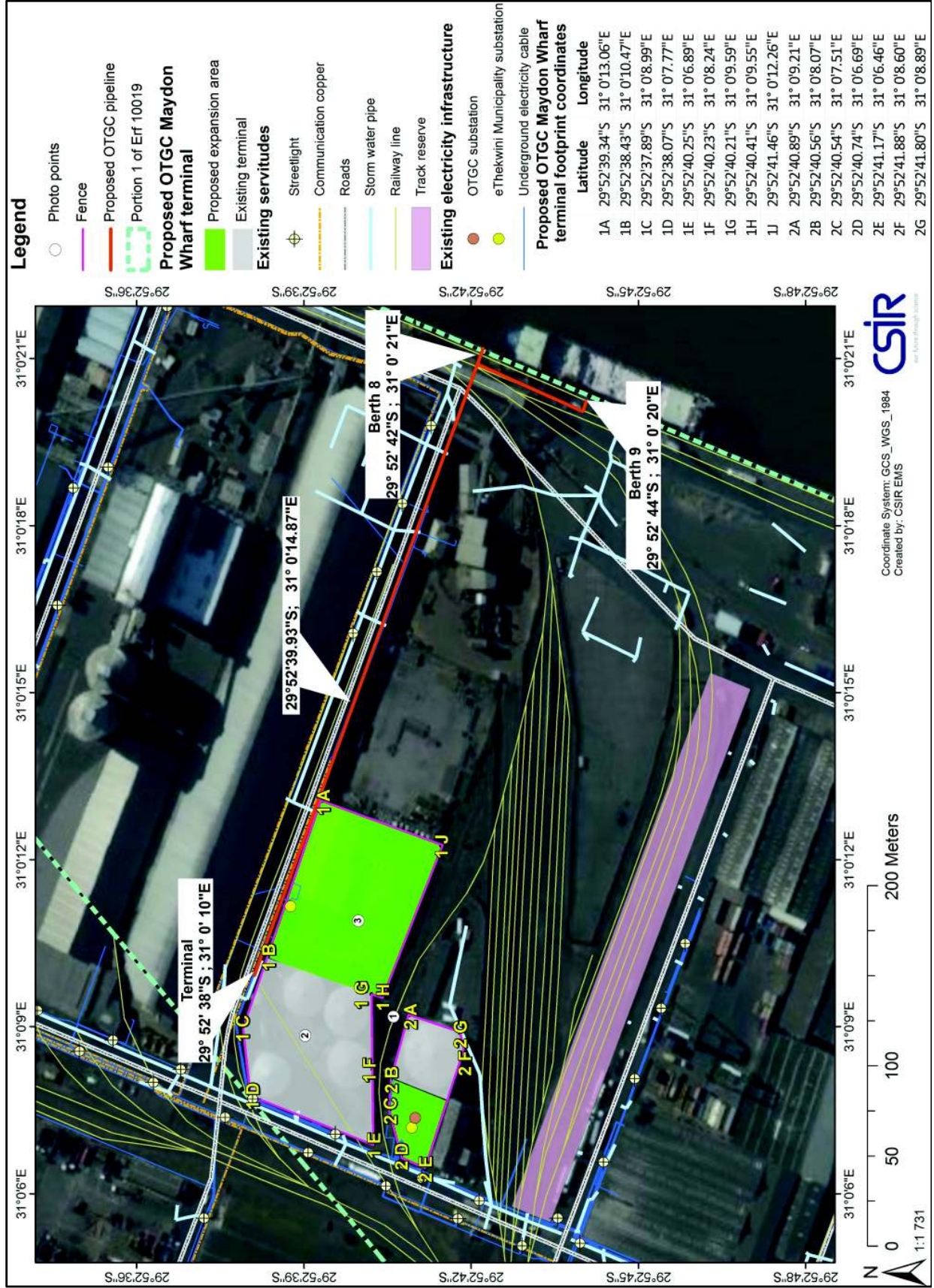
Draft Basic Assessment Report for the proposed Decommissioning and Upgrade of a Bulk Liquid Storage and Handling Facility at Maydon Wharf, Port of Durban, Kwazulu-Natal

Appendix A.4: Detailed Layout Map



SECTION G : APPENDICES

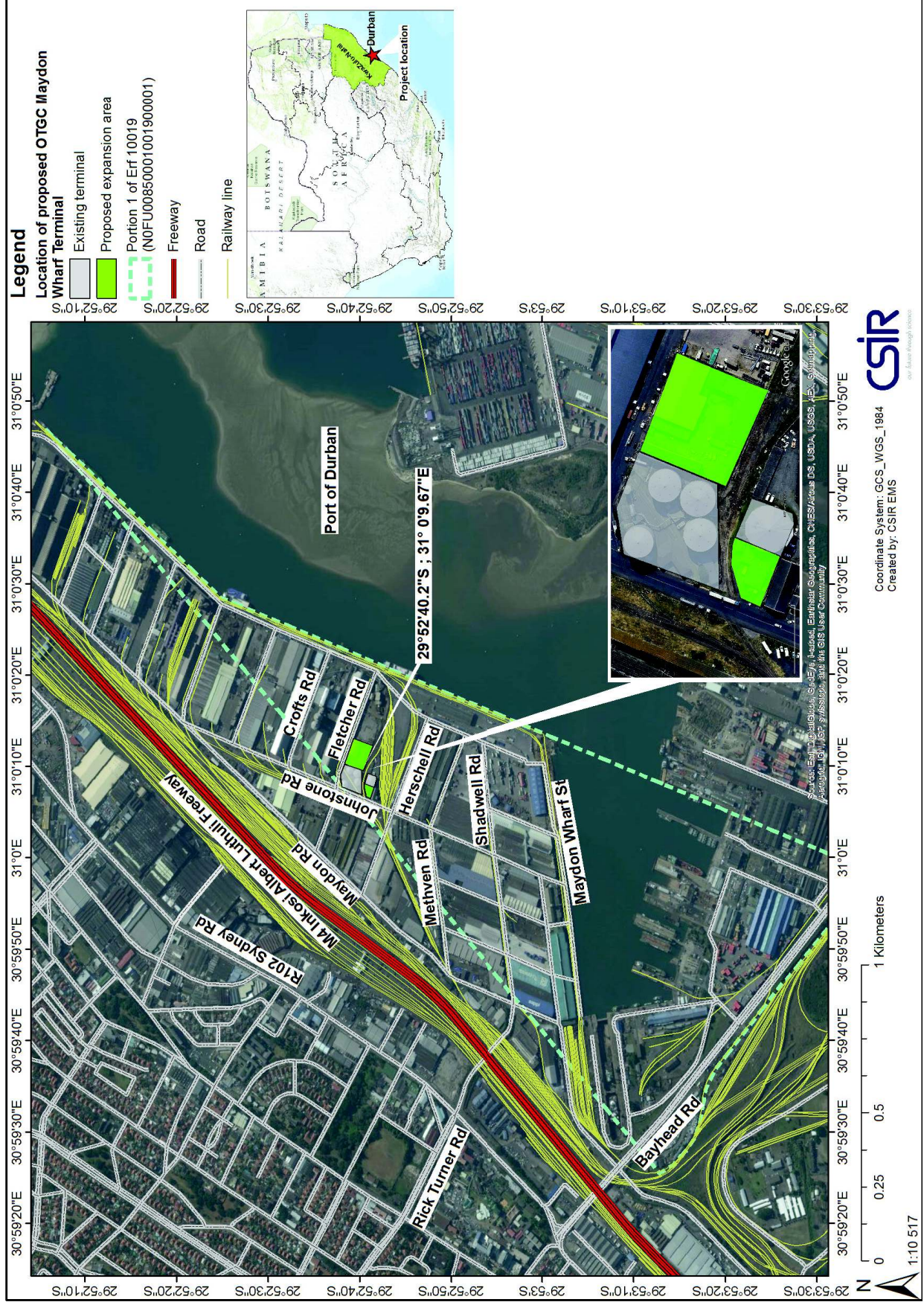
Appendix A.5: Existing and Proposed Infrastructure Map



SECTION G : APPENDICES

Draft Basic Assessment Report for the proposed Decommissioning and Upgrade of a Bulk Liquid Storage and Handling Facility at Maydon Wharf, Port of Durban, Kwazulu-Natal

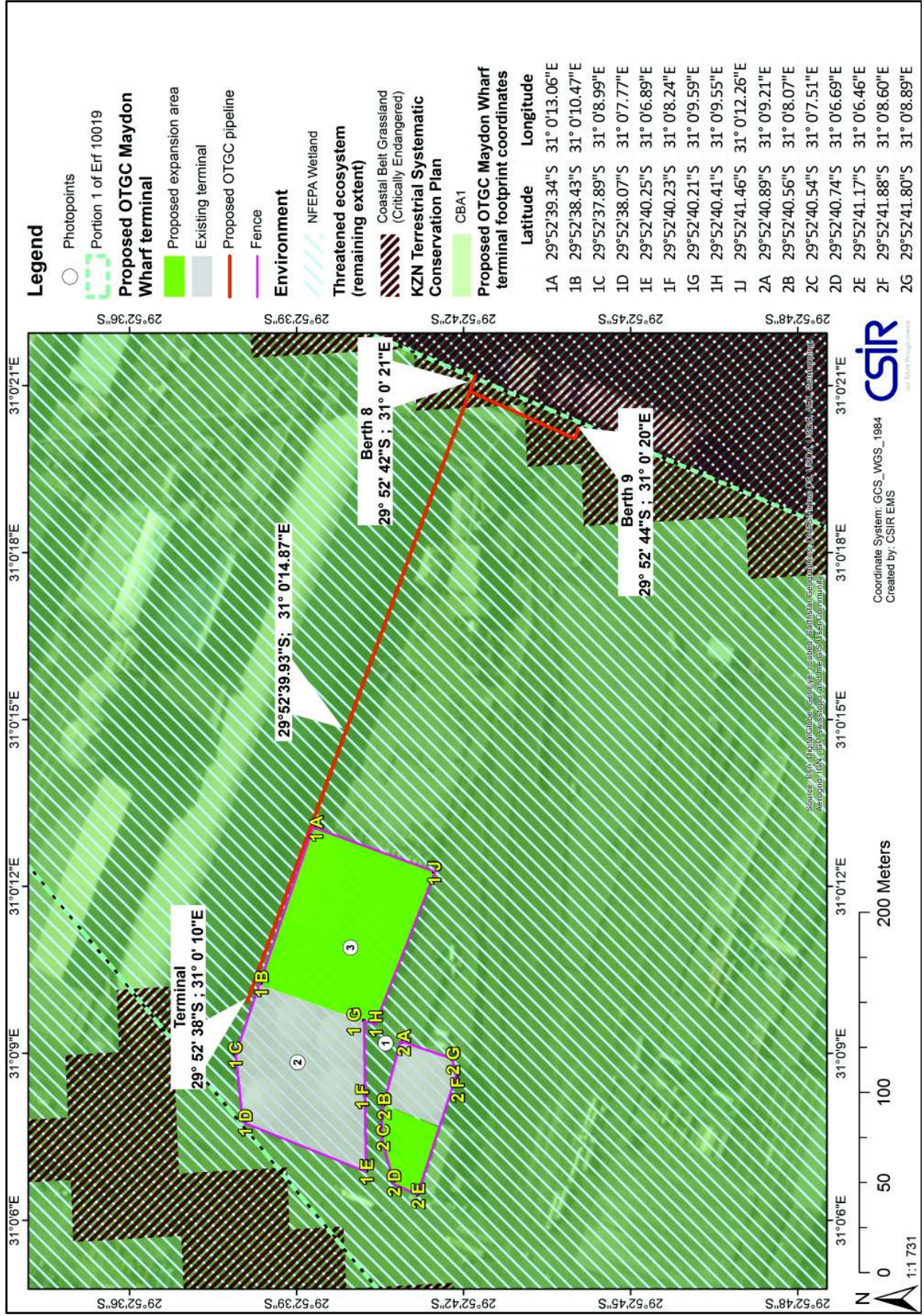
Appendix A.6: Road Infrastructure Map



SECTION G : APPENDICES

Draft Basic Assessment Report for the proposed Decommissioning and Upgrade of a Bulk Liquid Storage and Handling Facility at Maydon Wharf, Port of Durban, Kwazulu-Natal

Appendix A.7: Environmental Features Map



SECTION G: APPENDICES

Draft Basic Assessment Report for the proposed Decommissioning and Upgrade of a Bulk Liquid Storage and Handling Facility at Maydon Wharf, Port of Durban, KwaZulu-Natal

Appendix A.8: Co-ordinates of Project Components

Please note, as mentioned in the Draft Basic Assessment Report, the co-ordinates provided within this report are estimates and reflect the approximate location of the components of the project. The co-ordinates will be finalised upon completion of detailed engineering (subject to the issuing of an Environmental Authorisation), however it is anticipated that changes to the location will not be substantial.

1. Storage Terminal (Existing and Area of Expansion)

Point_ID	Latitude	Longitude
1A	29° 52' 39.34"S	31° 0' 13.06"E
1B	29° 52' 38.43"S	31° 0' 10.47"E
1C	29° 52' 37.89"S	31° 0' 8.99"E
1D	29° 52' 38.07"S	31° 0' 7.77"E
1E	29° 52' 40.25"S	31° 0' 6.89"E
1F	29° 52' 40.23"S	31° 0' 8.24"E
1G	29° 52' 40.21"S	31° 0' 9.59"E
1H	29° 52' 40.41"S	31° 0' 9.55"E
1J	29° 52' 41.46"S	31° 0' 12.26"E
2A	29° 52' 40.89"S	31° 0' 9.21"E
2B	29° 52' 40.56"S	31° 0' 8.07"E
2C	29° 52' 40.54"S	31° 0' 7.51"E
2D	29° 52' 40.74"S	31° 0' 6.69"E
2E	29° 52' 41.17"S	31° 0' 6.46"E
2F	29° 52' 41.88"S	31° 0' 8.60"E
2G	29° 52' 41.80"S	31° 0' 8.89"E

2. Proposed Pipeline from the Upgraded Storage Terminal to Berth 8 (this will be constructed within the existing pipeline reserve)

Point_ID	Latitude	Longitude
Start Point	29° 52' 38"S	31° 0' 10"E
Mid-Point	29° 52' 39.93"S	31° 0' 14.87"E
End Point (Berth 8)	29° 52' 42"S	31° 0' 21"E

3. Proposed Pipeline from the Upgraded Storage Terminal to Berth 9 (this will be constructed within the existing pipeline reserve)

Point_ID	Latitude	Longitude
Start Point	29° 52' 38"S	31° 0' 10"E
Mid-Point	29° 52' 39.93"S	31° 0' 14.87"E
End Point (Berth 9)	29° 52' 44"S	31° 0' 20"E