

APPENDIX A LOCALITY MAPS

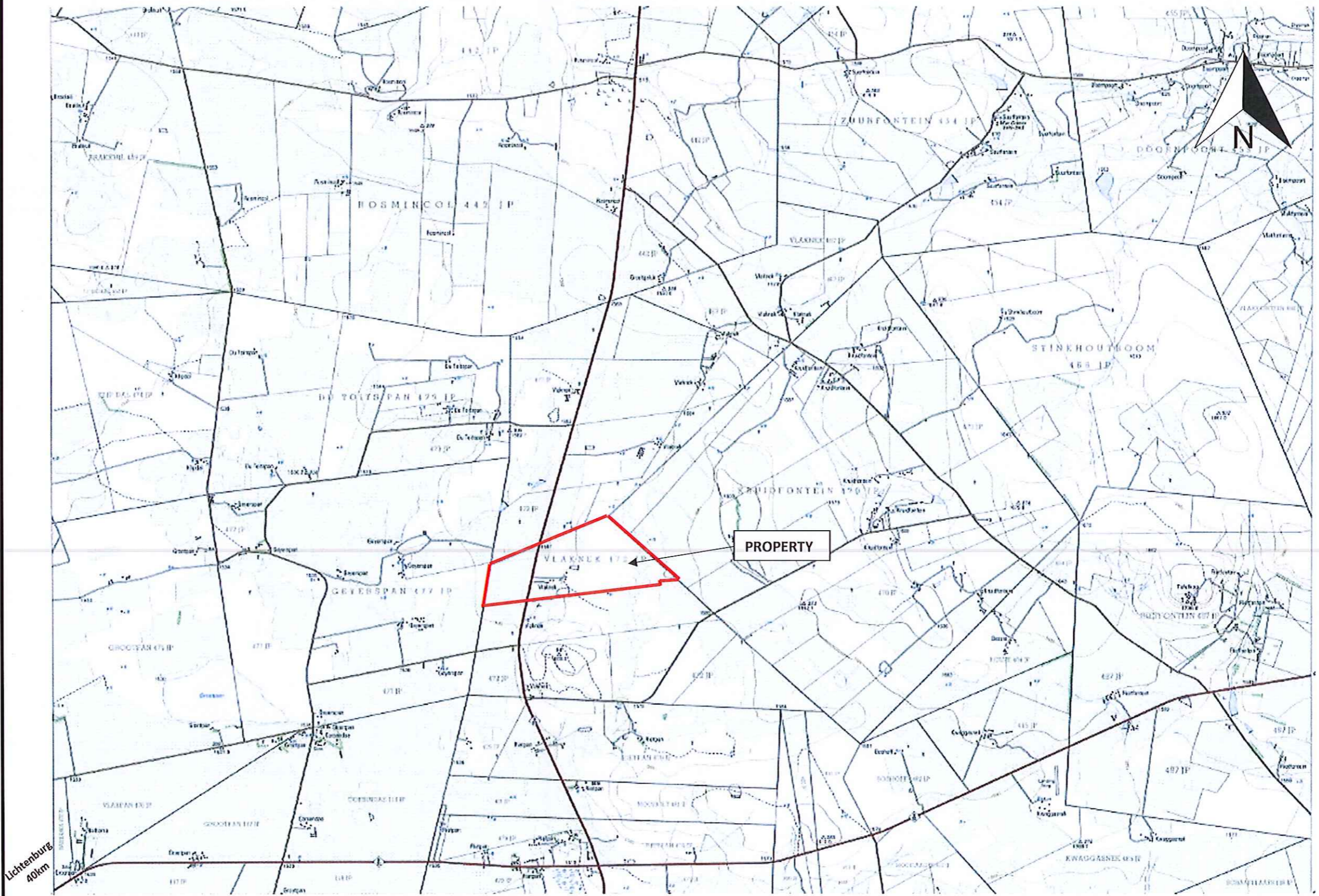
- Topographical map 1:50 000 2526DC
- Google earth™ – zoomed out (property position in relation to surrounding towns)
- Google earth™ – zoomed in (direct surroundings, R53 and agricultural lands as well as chicken farm)
- Surrounding properties

LEGEND

REFERENCE	VERKLARING
International Boundary and Beacon	Internasionale Grens en Baken
Provincial Boundary	Provinsiale Grens
Political Area	Politieke Oorlop
Natural River	Natuurlike Rivier
Artificial River	Kunstmatige Rivier
Non-Perennial River	Nie-staanhoedsrivier
Dry Water Course	Droë Loop
Marsh and Wet	Moeras en Veld
Drainage	Oploop (boon op grond)
Water Reserve, Reservoir, Water Pond	Waterreserw, Reserw, Waterput
Coastal Rocks	Kusstoringe
Port of Call	Port van Aanloping
Excision, Sand	Enkelt, Sand
Woodland	Woudegebied
Cultivated Land	Bewaaide Land
Orchard or Vineyard	Boord of wingerd
Plantation Ground	Plantegroei
Line of Trees	Reël van Bome

Midpoint of Project Site:

25.938362° S
26.602456° E



Fahari Property Investments (Pty) Ltd

- Portion 4 of farm Vlaknek 472 JP, Ditsobola Local Municipality, North West

Feedlot for Cattle

TOPOGRAPHIC MAP – Zoomed Out

SCALE





1.3cm:2km

From: 1:50 000

Topographical Map 2526DC



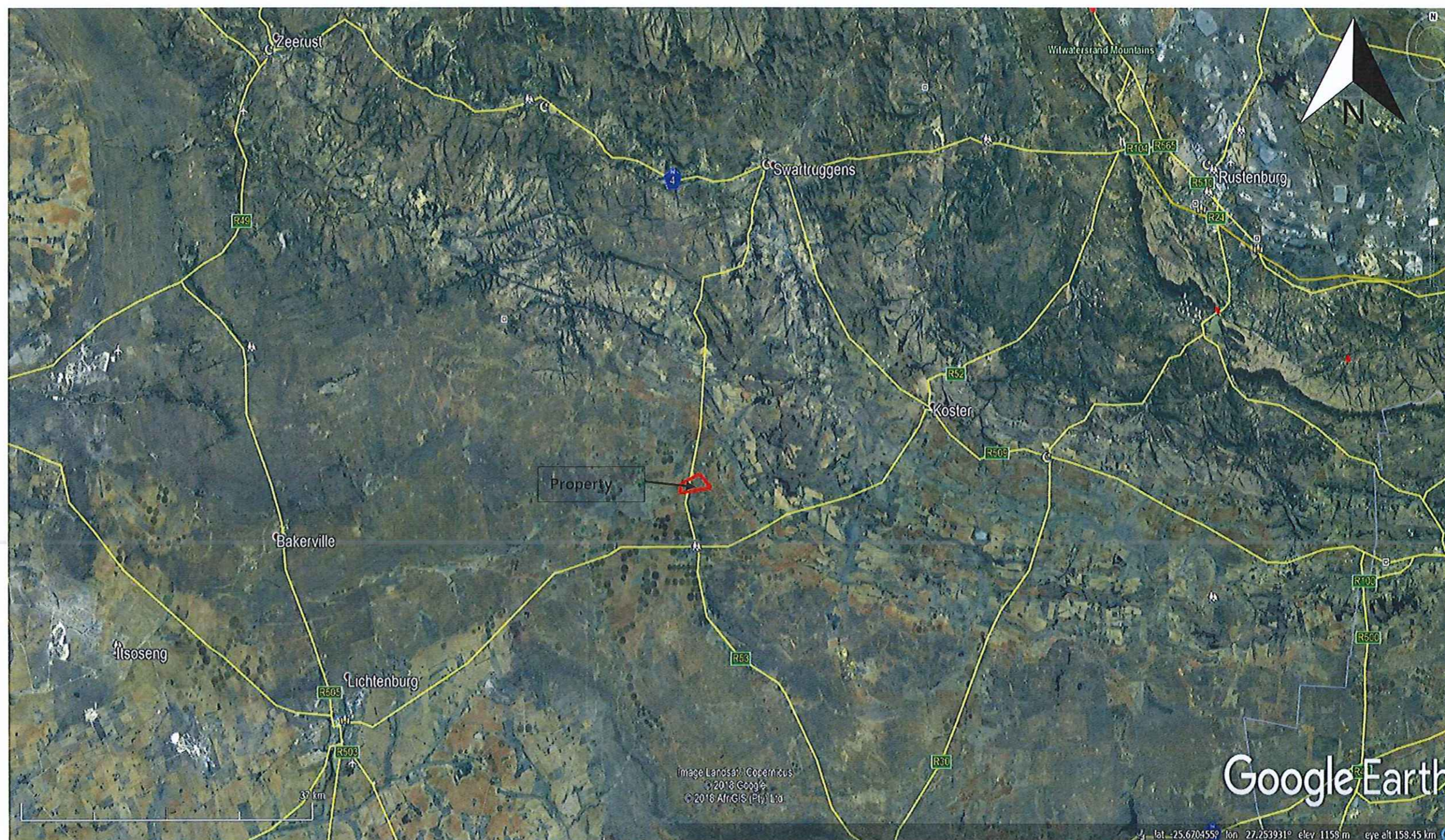
LEGEND

-  Secondary Road
-  Highway
-  Town
-  Project Site

GPS POINT

Midpoint of Project Site:

25.938362° S
26.602456° E



Hydro Science

Fahari Property Investments (Pty) Ltd

- Portion 4 of farm Vlaknek 472 JP, Ditsobola Local Municipality,
North West

Feedlot for Cattle

LOCALITY MAP – Zoomed Out





SCALE

As indicated on Map

SOURCE:

Google Earth & Google Maps

LEGEND

-  Secondary Road
-  Highway
-  Town
-  Project Site

GPS POINT

Midpoint of Project Site:

25.938362° S
26.602456° E



Fahari Property Investments (Pty) Ltd

- Portion 4 of farm Vlaknek 472 JP, Ditsobola Local Municipality,
North West

Feedlot for Cattle

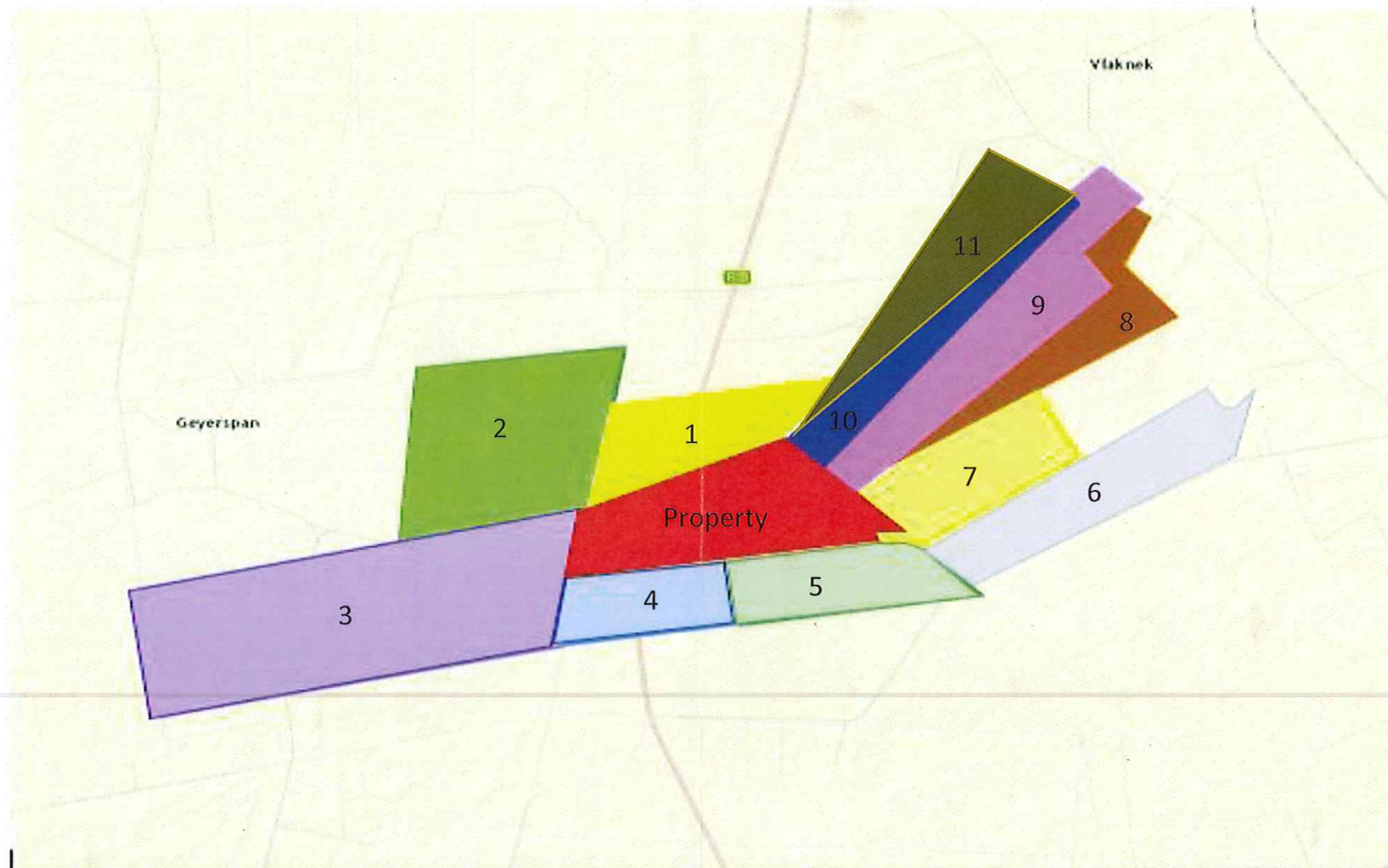
LOCALITY MAP – Zoomed In

SCALE

As indicated on Map

SOURCE:

Google Earth & Google Maps



	Property	Owner		Property	Owner
1.	PTN 9 VLAKNEK 472 JP	HENLIE BOERDERY CC 199600964523	7.	PTN 21 KRUIDFONTEIN 470 JP	CAMPHER, ROELOF PETRUS 3606155002083
2.	** Unknown	Not on Windeed	8.	PTN 1 KRUIDFONTEIN 470 JP	CAMPHER, LOURENS ERASMUS 6705145075089
3.	PTN 1 GEYERSPAN 477 JP	JAPIE LIEBENBERG BOERDERY CC 198602094923	9.	PTN 13 KRUIDFONTEIN 470 JP	KRUIDFONTEIN BOERDERY CC 200721880823
4.	PTN 7 VLAKNEK 472 JP	FAHARI PROP INV PTY LTD 200002086907	10.	PTN 3 KRUIDFONTEIN 470 JP	HENLIE BOERDERY CC 199600964523
5.	PTN 12 VLAKNEK 472 JP	LIEBENBERG, JOHANNES JACOB 6005055165081	11.	PTN 14 VLAKNEK 472 JP	HENLIE BOERDERY CC 199600964523
6.	PTN O KRUIDFONTEIN 470 JP	LIEBENBERG, JOHANNES JACOB 6005055165081			

** PTN 9 GEYERSPAN 477 JP

Not listed on Windeed. Listed as 9/477 on 1Map.co.za

Surrounding Properties – Portion 4 Vlaknek 472 JP, Ditsobola