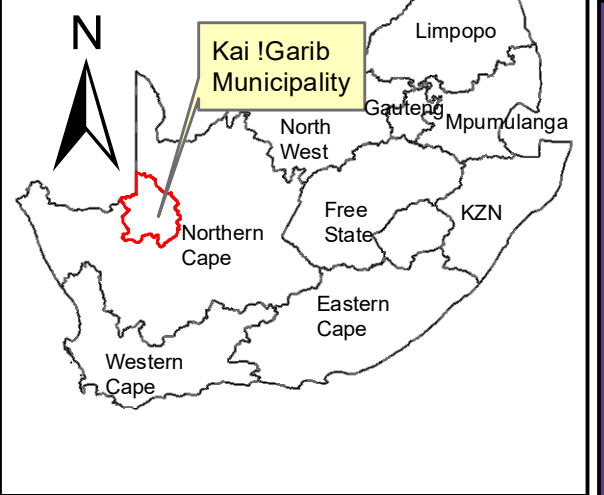
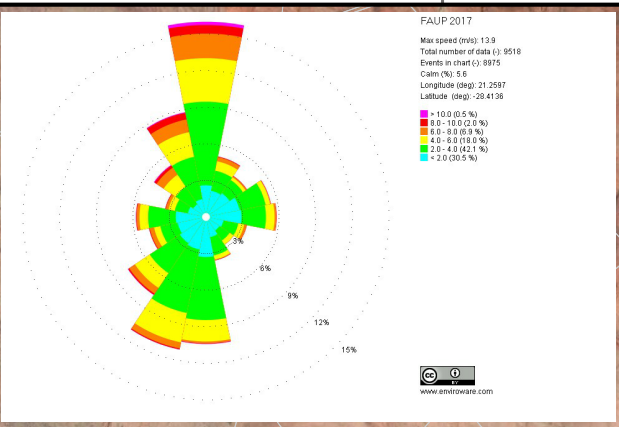


# PREFERRED GRID CONNECTION INFRASTRUCTURE



## Bloemsmond Grid Connection Infrastructure

### Legend

**Bloemsmond Solar Projects**

Solar Project

**Grid Connection Corridors**

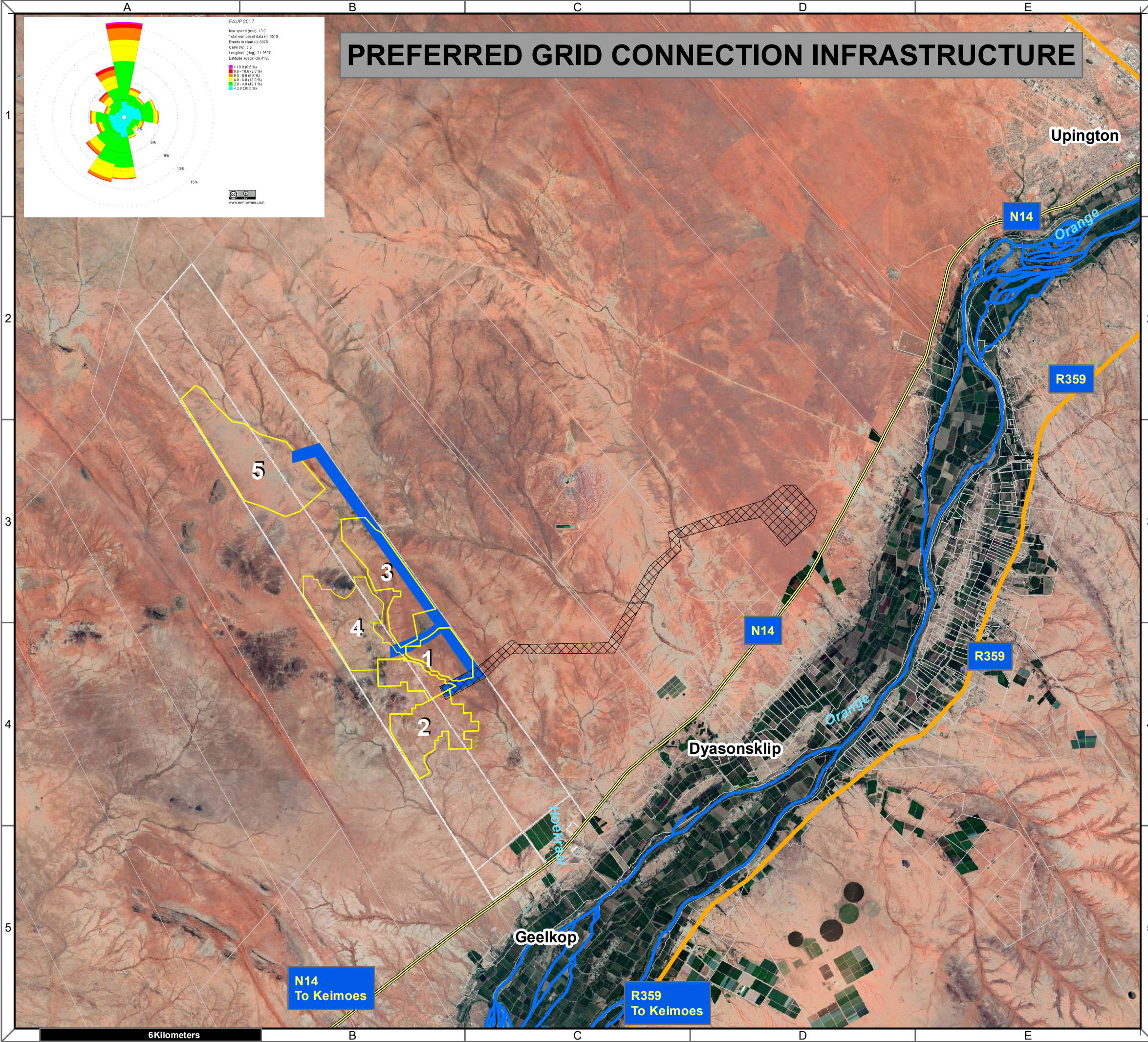
- Collector to Upington MTS
- On-site to Collector
- ARTERIAL ROUTE
- MAIN ROAD
- NATIONAL ROUTE
- Perennial River

**Notes**

- Map Scale is 1: 100 000 when printed on A3
- Aerial image courtesy of Google Earth Pro 2019
- Imagery date December 2018
- Wind data courtesy of Metar 2017
- Nearest Metar station is Upington Airport (FAUP) approx. 30kms ENE

Kilometers  
 0 0,75 1,5 3 4,5 6

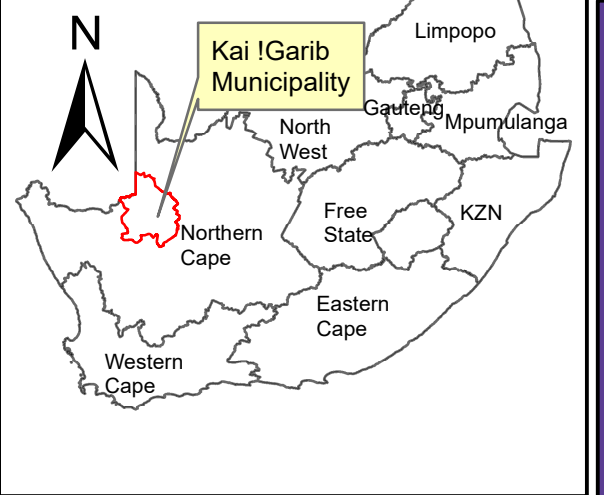
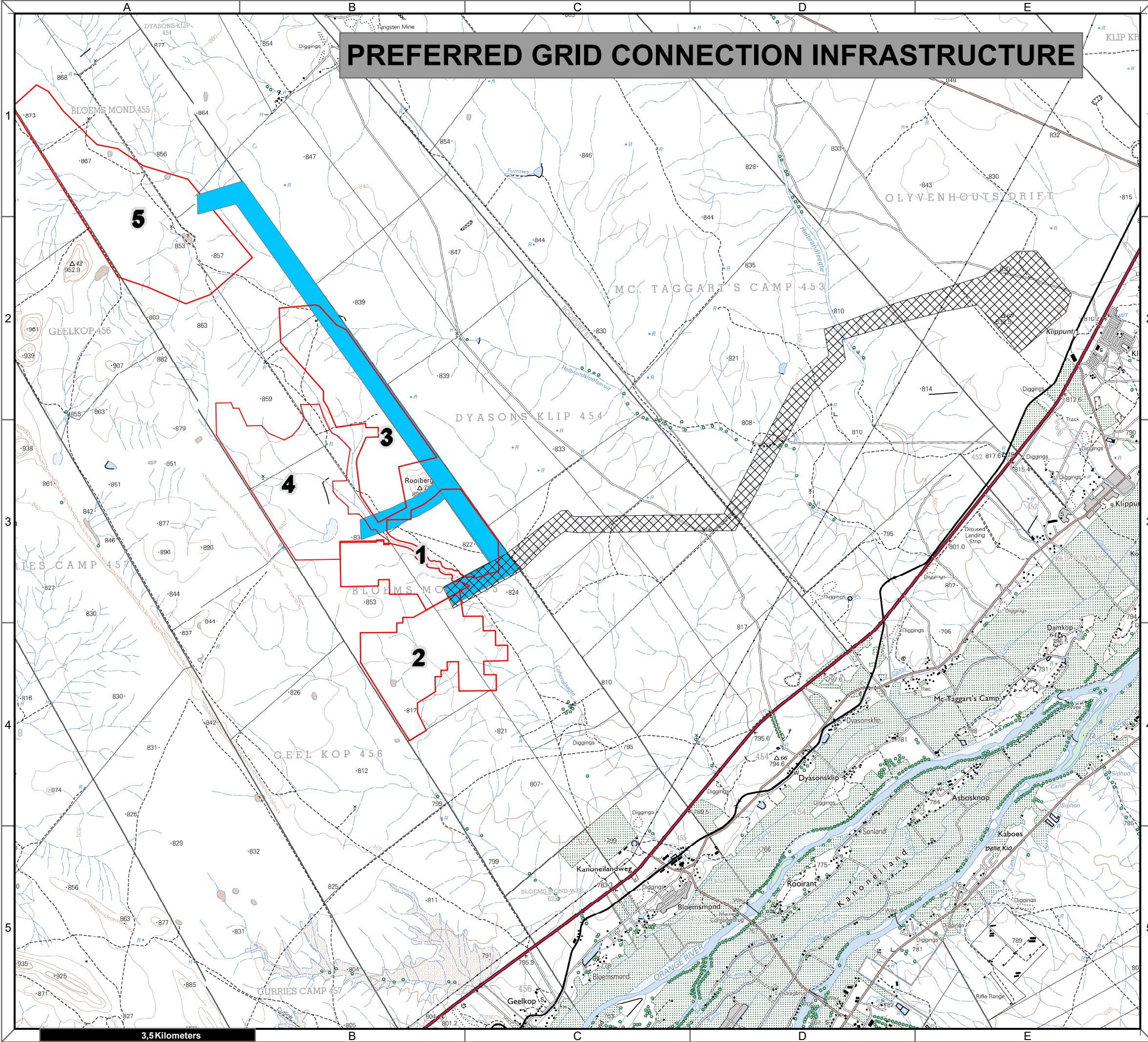
Map Drawn By:	Date	Reference
Melissa Mackay	2019/10/10	KAI582



LOCATION PLAN

6Kilometers

# PREFERRED GRID CONNECTION INFRASTRUCTURE



## Bloemsmond Grid Connection Infrastructure

### Legend

**Bloemsmond Solar Projects**

[Red outline] Solar Project

**Grid Connection Corridors**

[Hatched box] Collector to Upington MTS

[Blue box] On-site to Collector

### Notes

- Map Scale is 1: 60 000 when printed on A3
- Topographical data courtesy of Surveyor General
- Imagery date 2009

Kilometers

0 0,5 1 2 3 4

Map Drawn By:	Date	Reference
Melissa Mackay	2019/10/10	KAI582

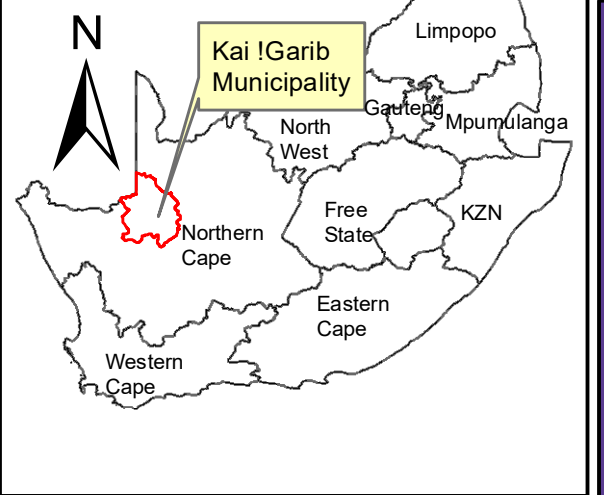
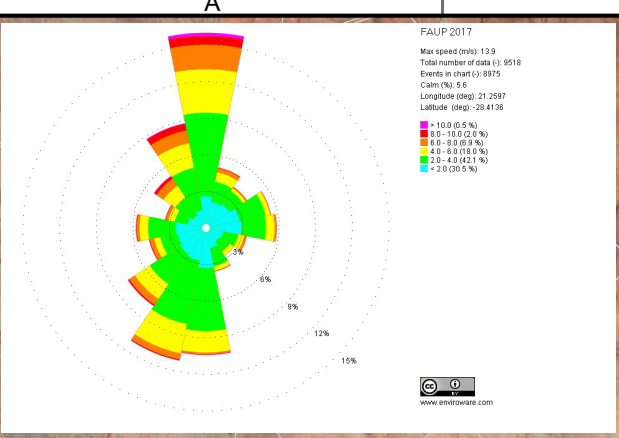
**Cape Environmental Assessment Practitioners (Pty) Ltd**

Telephone: +27 44 874 0365  
 Facsimile: +27 44 874 0432  
 Web: www.cape-eaprac.co.za

17 Progress St  
 PO Box 2070  
 George 6530

1:50 000 TOPOGRAPHICAL PLAN

# ALTERNATIVE GRID CONNECTION INFRASTRUCTURE



## Bloemsmond Grid Connection Infrastructure

### Legend

**Bloemsmond Solar Projects**

Solar Project

**Grid Connection Corridors**

- On-site to Collector
- Collector to Upington MTS
- ARTERIAL ROUTE
- MAIN ROAD
- NATIONAL ROUTE
- Perennial River

**Notes**

- Map Scale is 1: 100 000 when printed on A3
- Aerial image courtesy of Google Earth Pro 2019
- Imagery date December 2018
- Wind data courtesy of Metar 2017
- Nearest Metar station is Upington Airport (FAUP) approx. 30kms ENE

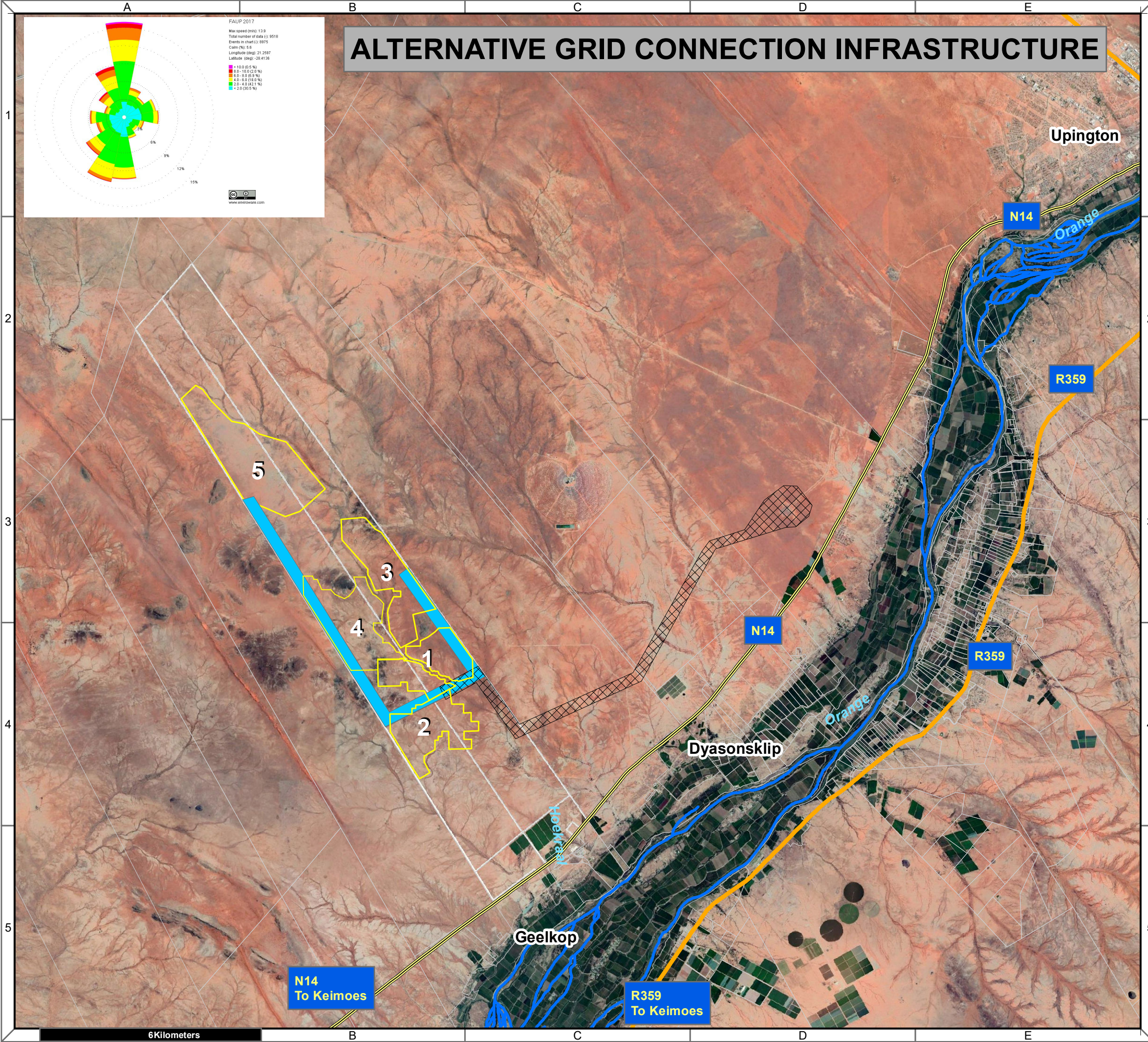
Kilometers  
 0 0,75 1,5 3 4,5 6

Map Drawn By:	Date	Reference
Melissa Mackay	2019/10/10	KAI582

**Cape Environmental Assessment Practitioners (Pty) Ltd**  
 Reg. No. 2008/0462707

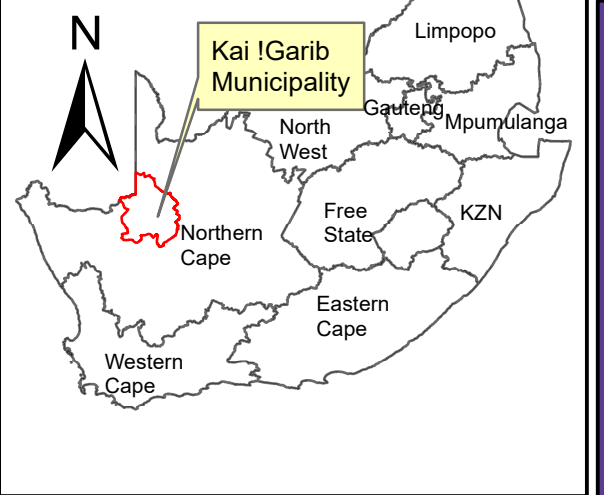
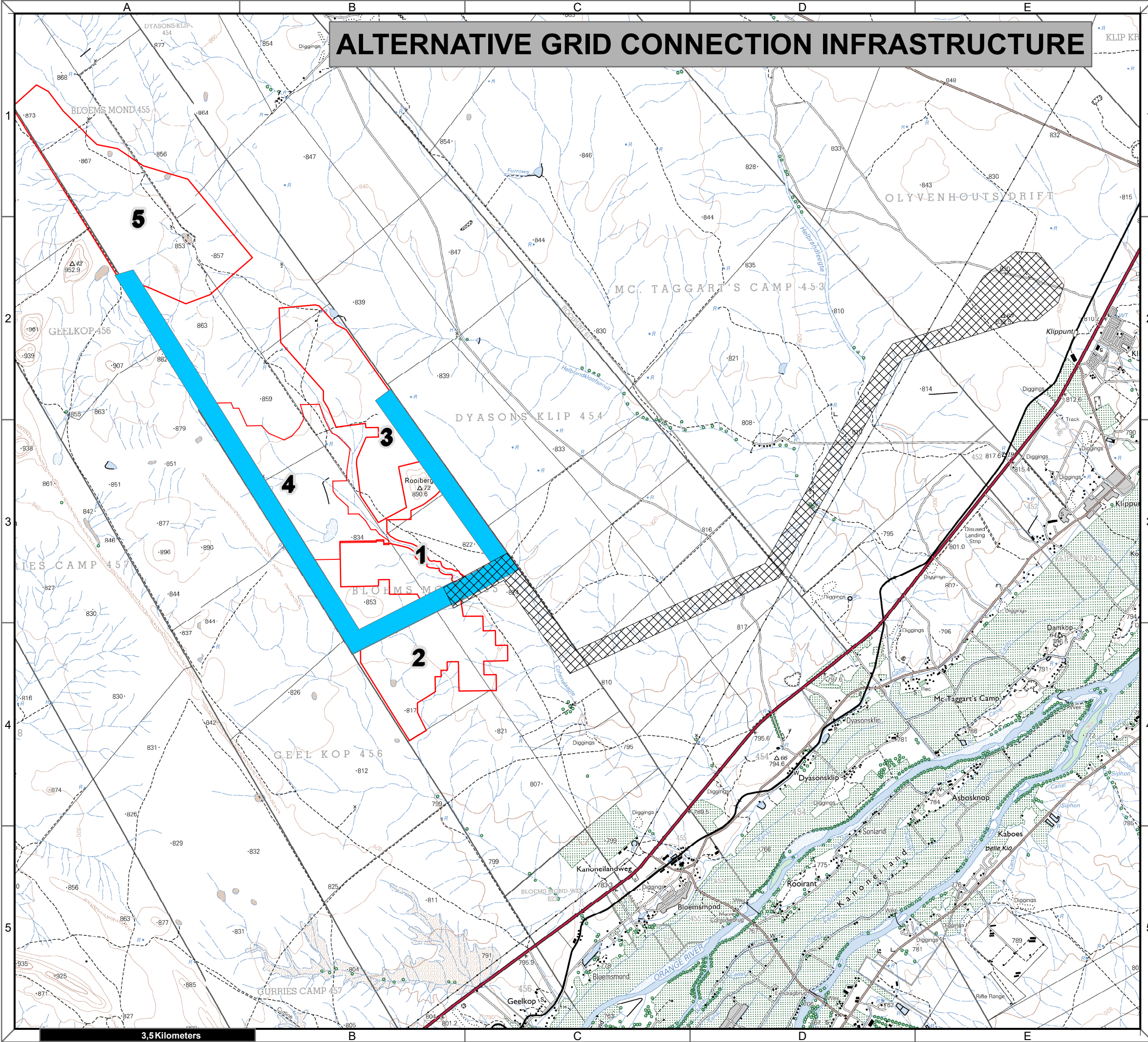
Telephone: +27 44 874 0365  
 Facsimile: +27 44 874 0432  
 Web: www.cape-eaprac.co.za

17 Progress St  
 PO Box 2070  
 George 6530



LOCATION PLAN

# ALTERNATIVE GRID CONNECTION INFRASTRUCTURE



## Bloemsmond Grid Connection Infrastructure

### Legend

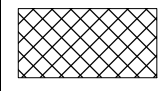
#### Bloemsmond Solar Projects



#### Grid Connection Corridors



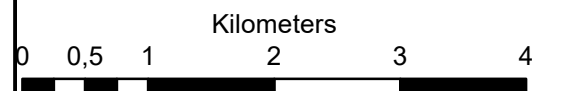
On-site to Collector



Collector to Upington MTS

#### Notes

- Map Scale is 1: 60 000 when printed on A3
- Topographical data courtesy of Surveyor General
- Imagery date 2009



Map Drawn By:	Date	Reference
Melissa Mackay	2019/10/10	KAI582

**Cape Environmental Assessment Practitioners (Pty) Ltd**  
 Telephone: +27 44 874 0365  
 Facsimile: +27 44 874 0432  
 Web: www.cape-eaprac.co.za

17 Progress St  
 PO Box 2070  
 George 6530

1:50 000 TOPOGRAPHICAL PLAN