

**Duneveld PV  
Farm 456 Geelkop**

**Legend**

- Farm\_456
- Duneveld PV
- Grid Connection
- Grid Corridor
- Khara\_Hais\_Municipality
- Kai\_!Garib\_Municipality
- ARTERIAL ROUTE
- MAIN ROAD
- NATIONAL ROUTE

**Rivers**

- Perennial River
- Corridor\_properties

**Notes**

- Map Scale is 1: 100 000 when printed on A3
- Aerial image courtesy of Google Earth Pro 2020
- Imagery date December 2018
- Wind data courtesy of Metar 2017
- Nearest Metar station is Upington Airport (FAUP) approx. 30kms ENE

Kilometers

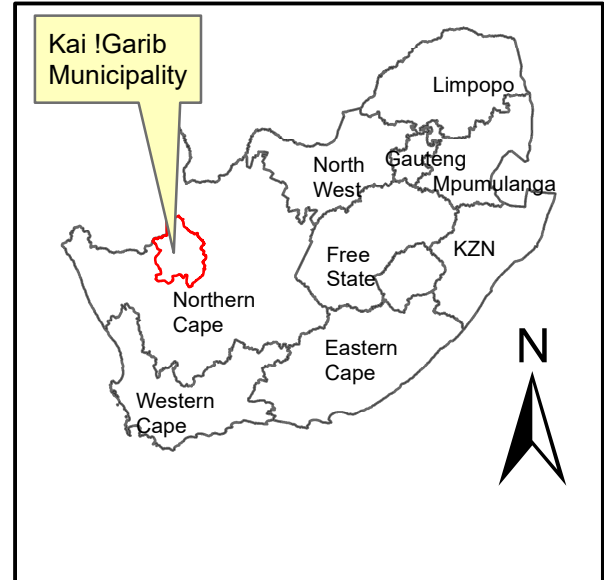
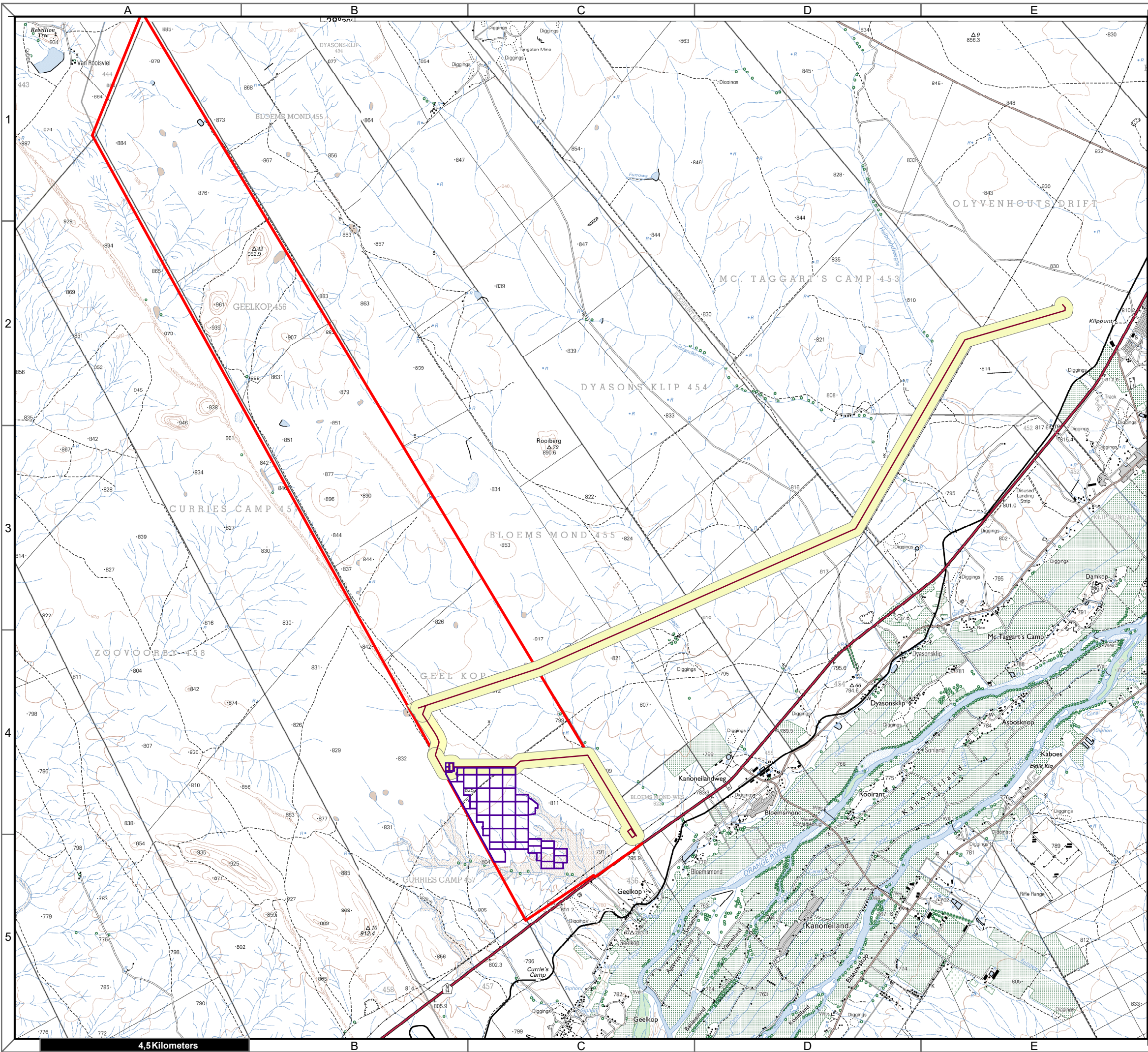
0 0,75 1,5 3 4,5 6

Map Drawn By:	Date	Reference
Melissa Mackay	2020/04/01	KAI632

Cape Environmental Assessment Practitioners (Pty) Ltd  
 Reg. No. 2008/004627/07

Telephone: +27 44 874 0365  
 Facsimile: +27 44 874 0432  
 Web: www.cape-eaprac.co.za

17 Progress St  
 PO Box 2070  
 George 6530



**Duneveld PV  
Farm 456 Geelkop**

### Legend

- Farm\_456
- Duneveld PV
- Grid Connection
- Grid Corridor

**Notes**

- Map Scale is 1: 80 000 when printed on A3
- Topographical data courtesy of Surveyor General
- Imagery date 2009

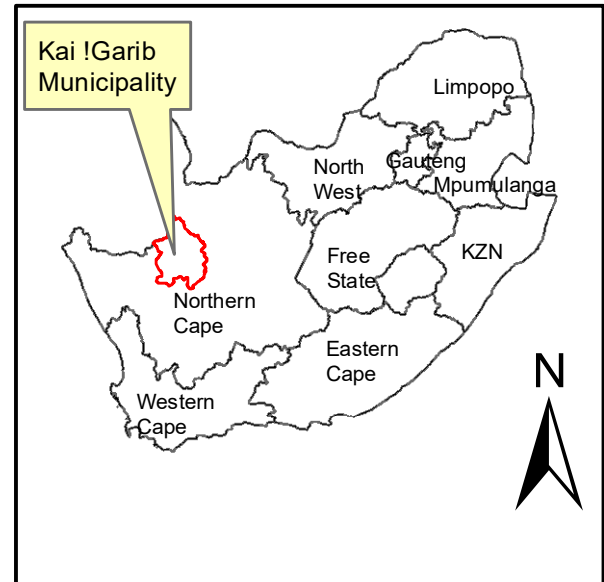
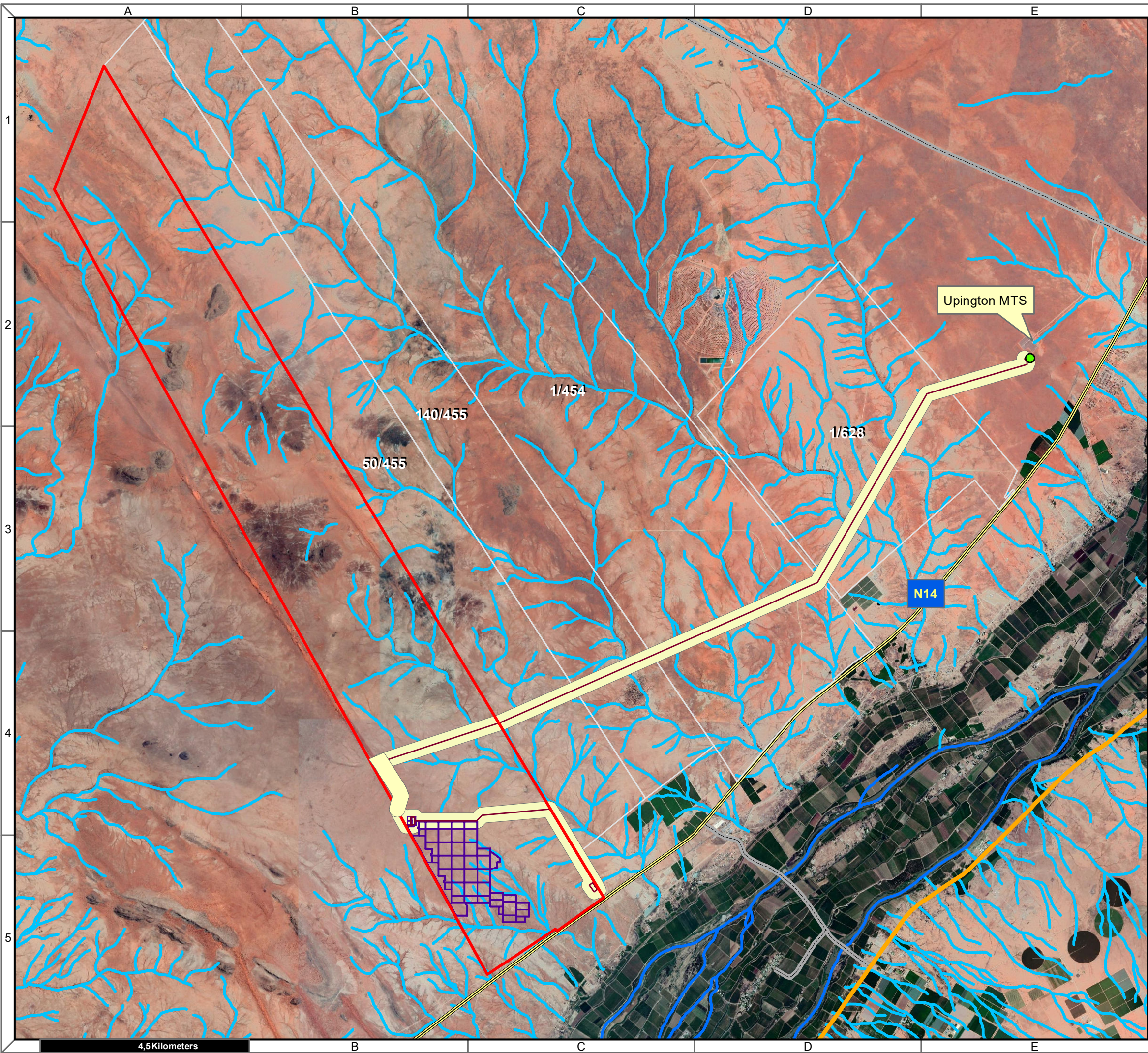
Kilometers

0    0,75    1,5    3    4,5    6

Map Drawn By:	Date	Reference
Melissa Mackay	2020/04/01	KAI632

**Cape Environmental Assessment Practitioners (Pty) Ltd**  
 Reg. No. 2008/004627/07  
 Telephone: +27 44 874 0365      17 Progress St  
 Facsimile: +27 44 874 0432      PO Box 2070  
 Web: www.cape-eaprac.co.za      George 6530

**1:50 000 TOPOGRAPHICAL PLANS**



**Duneveld PV  
Farm 456 Geelkop**

- Legend**
- Farm\_456
  - Grid Connection
  - Duneveld PV
  - Grid Corridor
  - Corridor\_properties
  - ARTERIAL ROUTE
  - MAIN ROAD
  - SECONDARY ROAD
- Rivers**
- Perennial River
  - Non-Perennial River

**Notes**

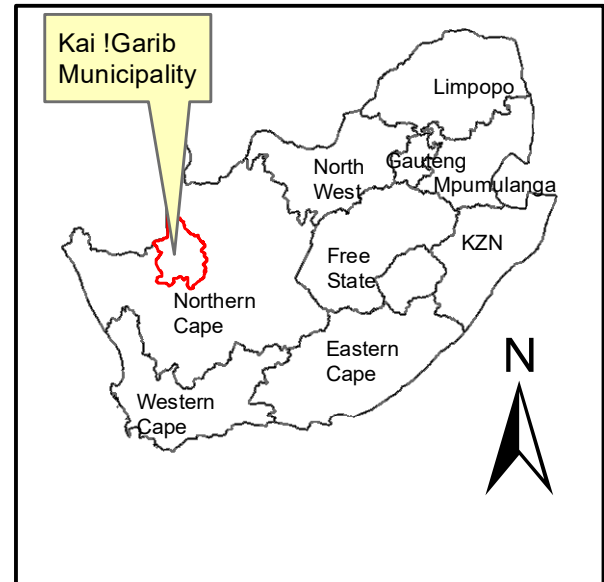
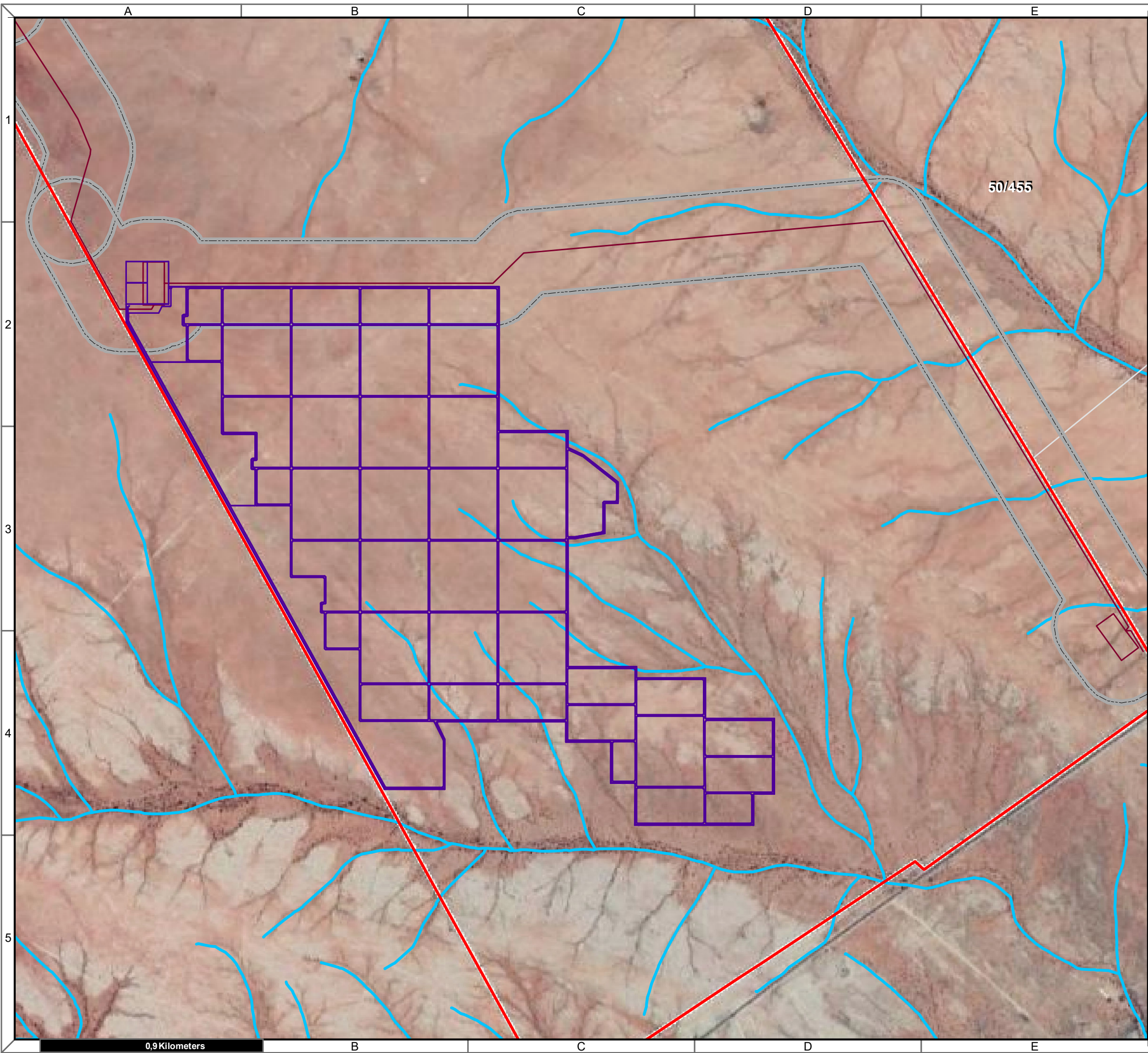
- Map Scale is 1: 80 000 when printed on A3
- Aerial image courtesy of Google Earth Pro 2020
- Imagery date December 2018

Kilometers

0   0,75   1,5   3   4,5   6

Map Drawn By:	Date	Reference
Melissa Mackay	2020/04/01	KAI632

**Cape Environmental Assessment Practitioners (Pty) Ltd**  
 Reg. No. 2008/004627/07  
 Telephone: +27 44 874 0365      17 Progress St  
 Facsimile: +27 44 874 0432      PO Box 2070  
 Web: www.cape-eaprac.co.za      George 6530



**Duneveld PV  
Farm 456 Geelkop**

**Legend**

- Farm\_456
- Duneveld PV
- Grid Connection
- Duneveld PV
- Grid Corridor
- Corridor\_properties

**Rivers**

- PERENNIAL CENTER LINE
- NON-PERENNIAL CENTER LINE

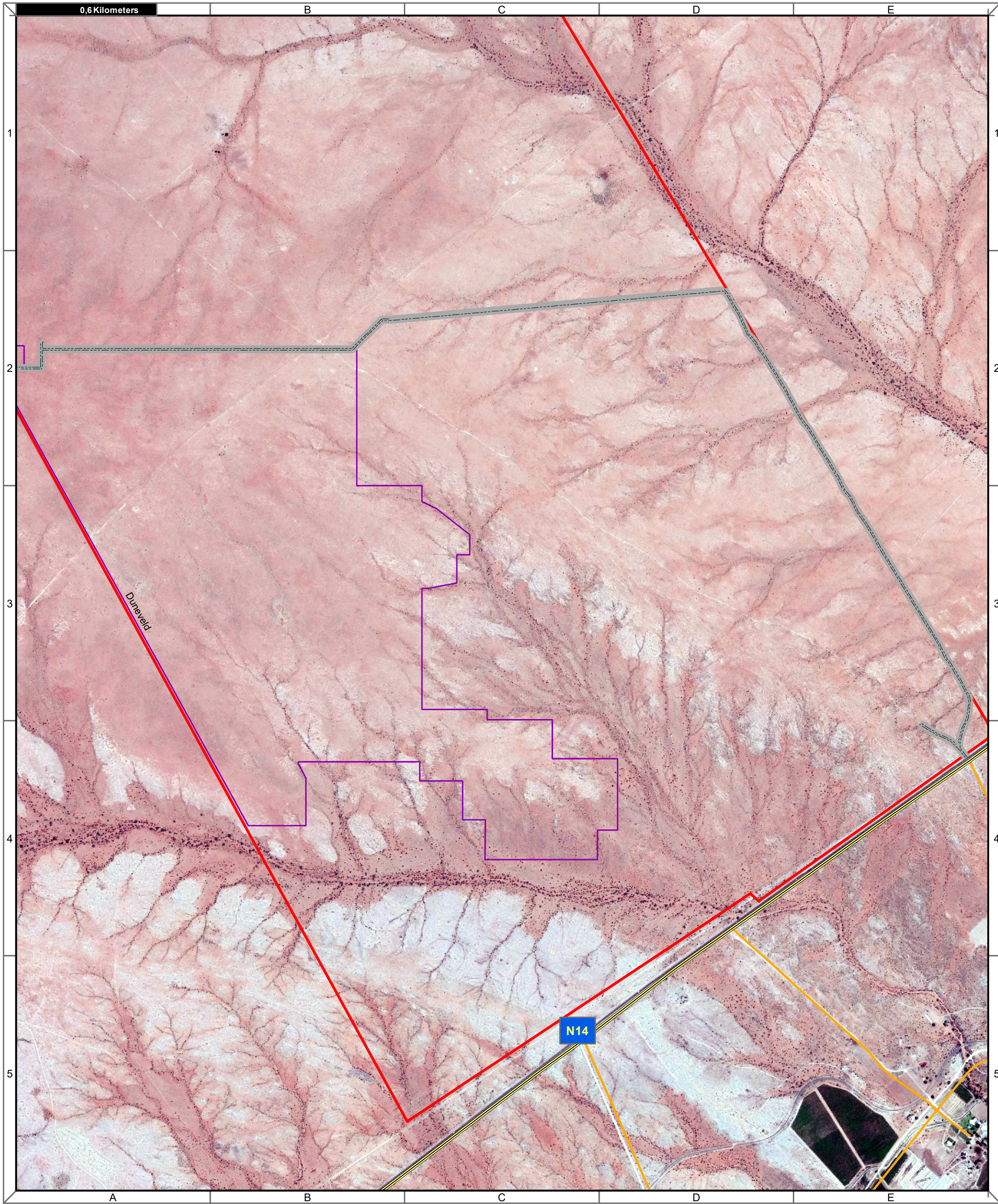
**Notes**

- Map Scale is 1: 15 000 when printed on A3
- Aerial image courtesy of Google Earth Pro 2020
- Imagery date December 2018

Kilometers

0 0,125 0,25 0,5 0,75 1

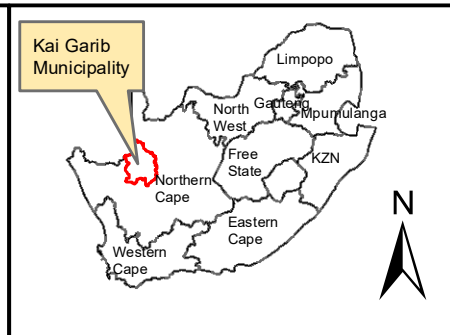
Map Drawn By:	Date	Reference
Melissa Mackay	2020/04/01	KAI632



**Notes**  
 - Map Scale is 1: 15 000 when printed on A3  
 - Aerial image courtesy of Google Earth Pro 2020  
 - Imagery date December 2018

**Legend**

- Farm\_456
- Access Road
- <all other values>
- OTHER ACCESS
- ARTERIAL ROUTE



**Duneveld PV  
Farm 456 Geelkop**

Map Drawn By:	Date	Reference
Melissa Mackay	2020/04/06	KAI632

**Cape Environmental Assessment Practitioners (Pty) Ltd**  
 Reg. No. 2008/004627/07  
 Telephone: +27 44 874 0365  
 Facsimile: +27 44 874 0432  
 Web: www.cape-eaprac.co.za

17 Progress St  
 PO Box 2070  
 George 6530

**ACCESS ROUTES**