

**GK Solar PV
Farm 456 Geelkop**

Legend

- Farm_456
- Grid_Connection_7
- GK Solar PV
- Grid_Corridor_7
- Khara_Hais_Municipality
- Kai_!Garib_Municipality
- ARTERIAL ROUTE
- MAIN ROAD
- NATIONAL ROUTE

Rivers

- Perennial River
- Corridor_properties

Notes

- Map Scale is 1: 100 000 when printed on A3
- Aerial image courtesy of Google Earth Pro 2020
- Imagery date December 2018
- Wind data courtesy of Metar 2017
- Nearest Metar station is Upington Airport (FAUP) approx. 30kms ENE

Kilometers

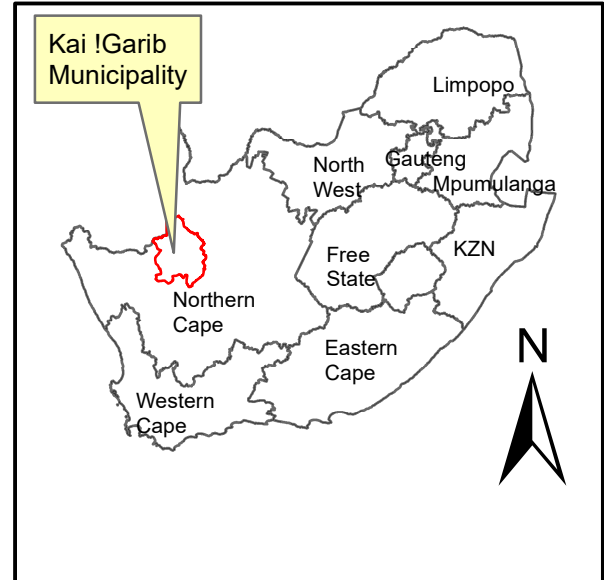
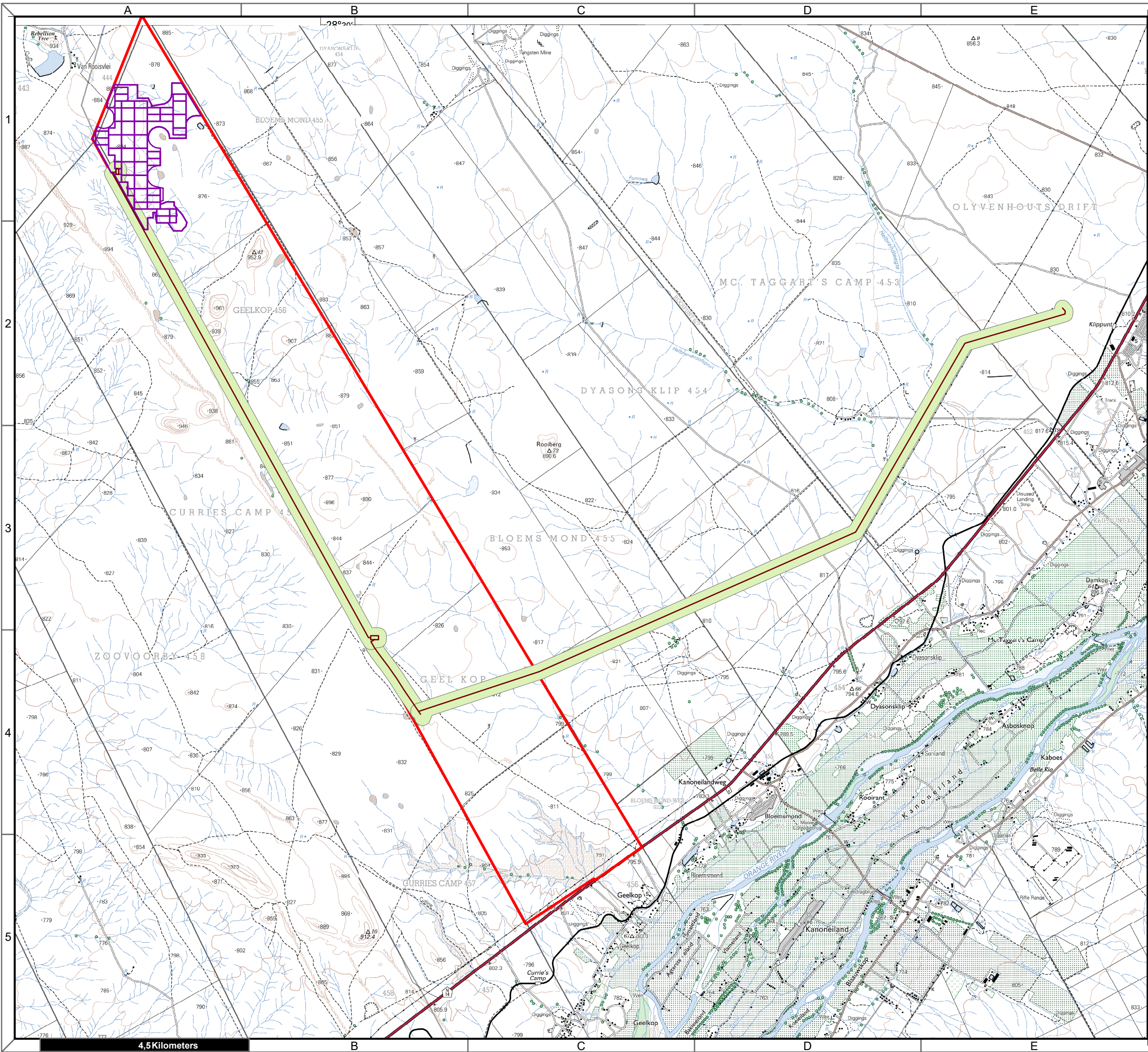
0 0,75 1,5 3 4,5 6

Map Drawn By:	Date	Reference
Melissa Mackay	2020/04/01	KAI632

Cape Environmental Assessment Practitioners (Pty) Ltd
Reg. No. 2008/004627/07





Telephone: +27 44 874 0365
Facsimile: +27 44 874 0432
Web: www.cape-eaprac.co.za

17 Progress St
PO Box 2070
George 6530



**GK Solar PV
Farm 456 Geelkop**

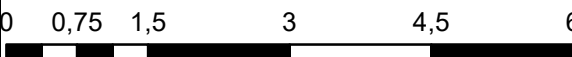
Legend

-  Farm_456
-  Grid_Connection_7
-  GK Solar PV
-  Grid_Corridor_7

Notes

- Map Scale is 1: 80 000 when printed on A3
- Topographical data courtesy of Surveyor General
- Imagery date 2009

Kilometers



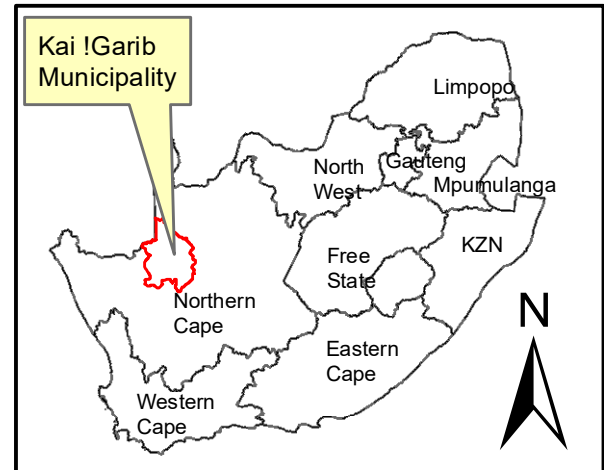
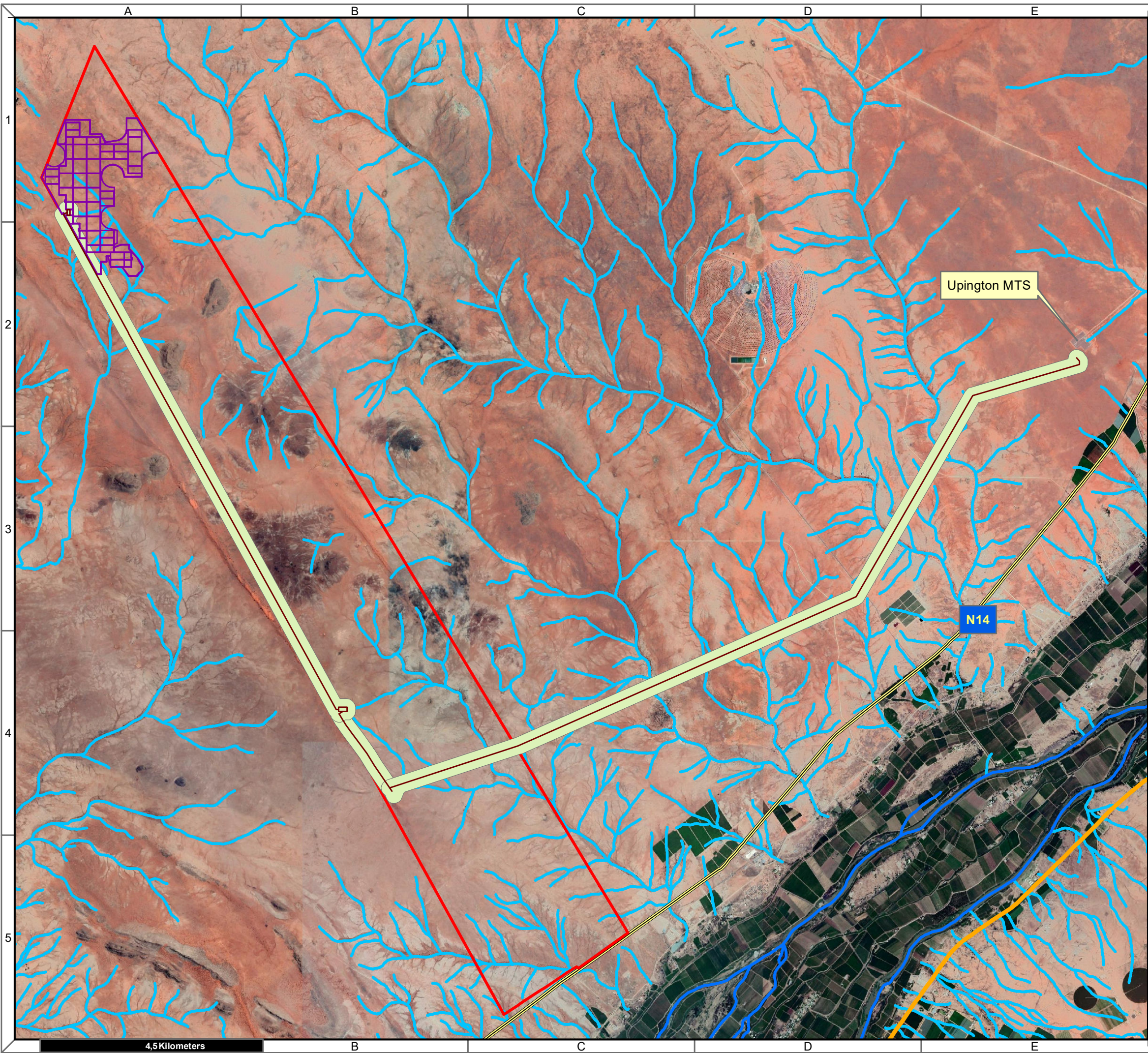
Map Drawn By:	Date	Reference
Melissa Mackay	2020/04/01	KAI632



Cape Environmental Assessment Practitioners (Pty) Ltd
 Telephone: +27 44 874 0365
 Facsimile: +27 44 874 0432
 Web: www.cape-eaprac.co.za

17 Progress St
 PO Box 2070
 George 6530

1:50 000 TOPOGRAPHICAL PLANS



**GK Solar PV
Farm 456 Geelkop**

Legend

- Farm_456
- Grid_Connection_7
- GK Solar PV
- Grid_Corridor_7
- ARTERIAL ROUTE
- MAIN ROAD
- NATIONAL ROUTE
- Perennial Rivers
- Non-Perennial Rivers

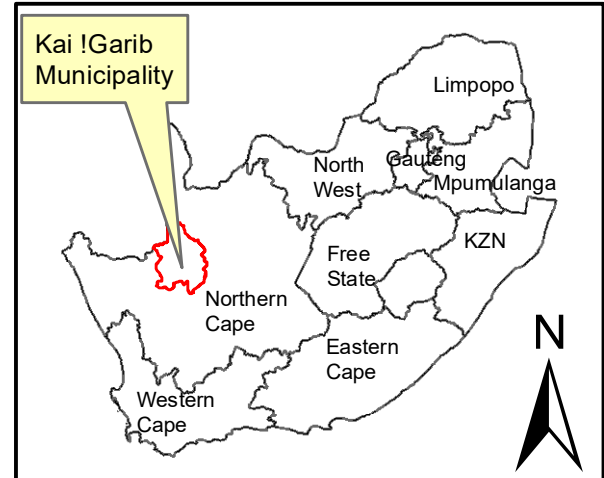
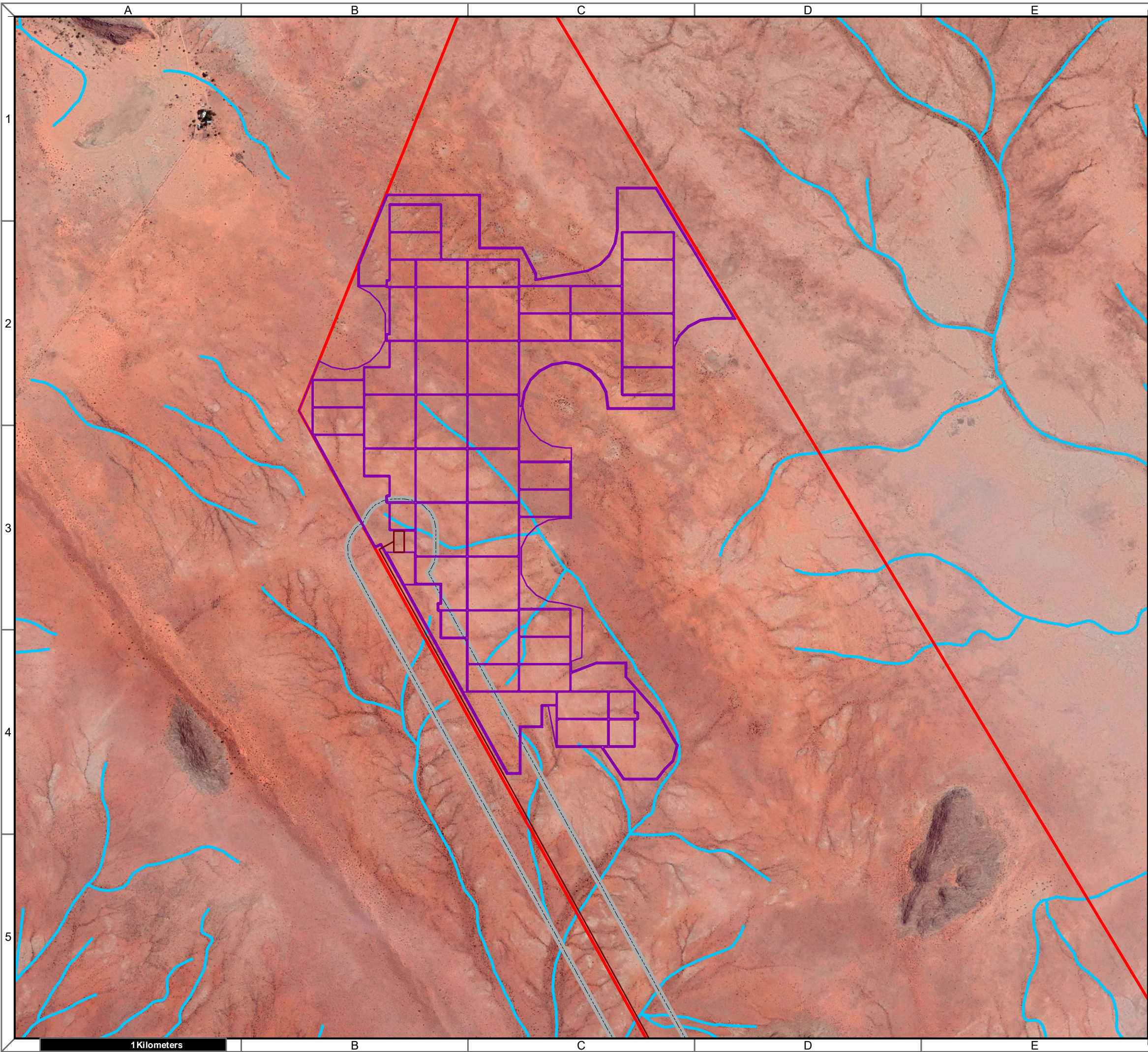
Notes

- Map Scale is 1: 80 000 when printed on A3
- Aerial image courtesy of Google Earth Pro 2020
- Imagery date December 2018

Kilometers

Map Drawn By:	Date	Reference
Melissa Mackay	2020/04/01	KAI632

Cape Environmental Assessment Practitioners (Pty) Ltd
 Reg. No. 2008/004627/07
 Telephone: +27 44 874 0365
 Facsimile: +27 44 874 0432
 Web: www.cape-eaprac.co.za
 17 Progress St
 PO Box 2070
 George 6530



**Shrubland PV
Farm 456 Geelkop**

Legend

- Farm_456
- Grid_Connection_7
- GK Solar PV
- Grid_Corridor_7
- ARTERIAL ROUTE
- MAIN ROAD
- SECONDARY ROAD
- Perennial Rivers
- Non-Perennial Rivers

Notes

- Map Scale is 1: 20 000 when printed on A3
- Aerial image courtesy of Google Earth Pro 2020
- Imagery date December 2018

Kilometers

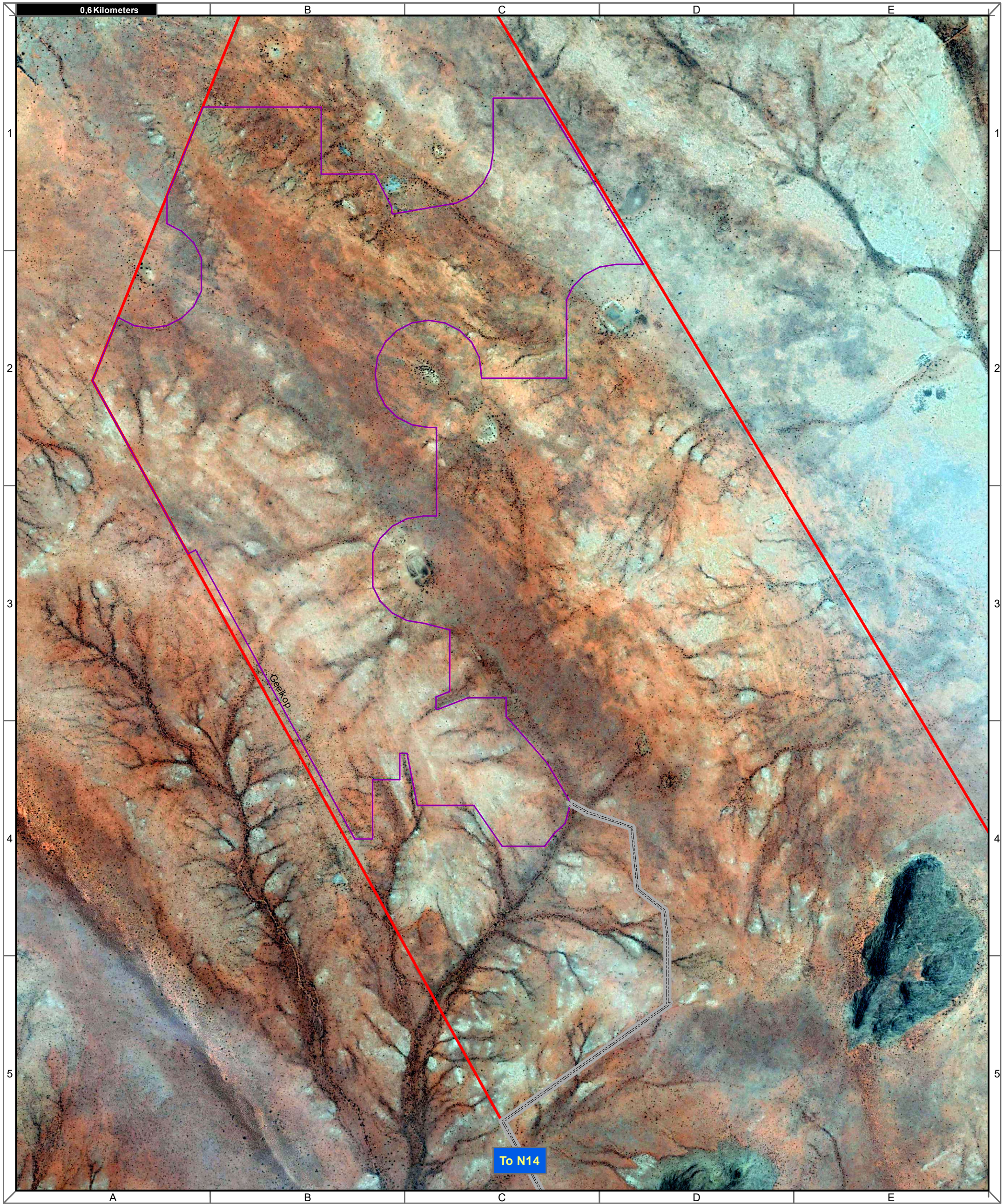
0 0,175 0,35 0,7 1,05 1,4

Map Drawn By:	Date	Reference
Melissa Mackay	2020/04/01	KAI632

Cape Environmental Assessment Practitioners (Pty) Ltd
Reg. No. 2008/004627/07

Telephone: +27 44 874 0365
 Facsimile: +27 44 874 0432
 Web: www.cape-eaprac.co.za

17 Progress St
 PO Box 2070
 George 6530

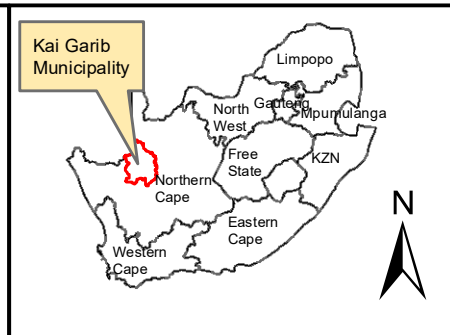


Notes
 - Map Scale is 1: 15 000 when printed on A3
 - Aerial image courtesy of Google Earth Pro 2020
 - Imagery date December 2018

Kilometers
 0 250 500 1 000 1 500 2 000

Legend

- Farm_456
- Access Road
- GK Solar



**GK Solar PV
 Farm 456 Geelkop**

Map Drawn By:	Date	Reference
Melissa Mackay	2020/04/06	KAI632

Cape Environmental Assessment Practitioners (Pty) Ltd
 Reg. No. 2008/004627/07

Telephone: +27 44 874 0365
 Facsimile: +27 44 874 0432
 Web: www.cape-eaprac.co.za

17 Progress St
 PO Box 2070
 George 6530

ACCESS ROUTES