

**Karroid PV  
Farm 456 Geelkop**

**Legend**

- Farm\_456
- Grid\_Connection\_5
- Karroid PV
- Grid\_Corridor\_5
- Khara\_Hais\_Municipality
- Kai\_!Garib\_Municipality
- ARTERIAL ROUTE
- MAIN ROAD
- NATIONAL ROUTE

**Rivers**

- Perennial River
- Corridor\_properties

**Notes**

- Map Scale is 1: 100 000 when printed on A3
- Aerial image courtesy of Google Earth Pro 2020
- Imagery date December 2018
- Wind data courtesy of Metar 2017
- Nearest Metar station is Upington Airport (FAUP) approx. 30kms ENE

Kilometers

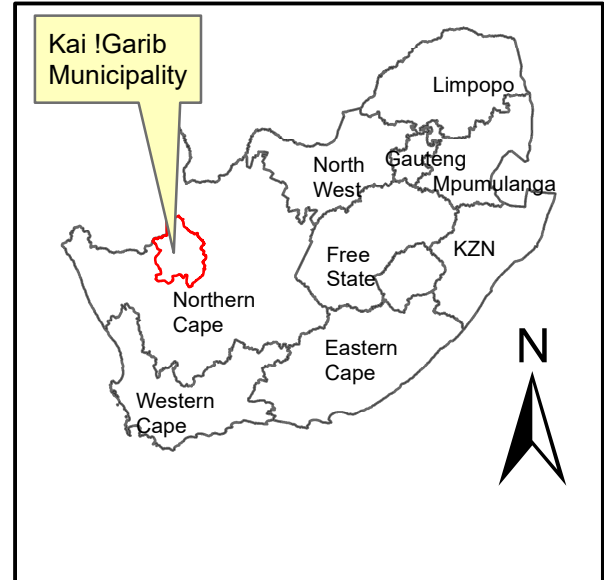
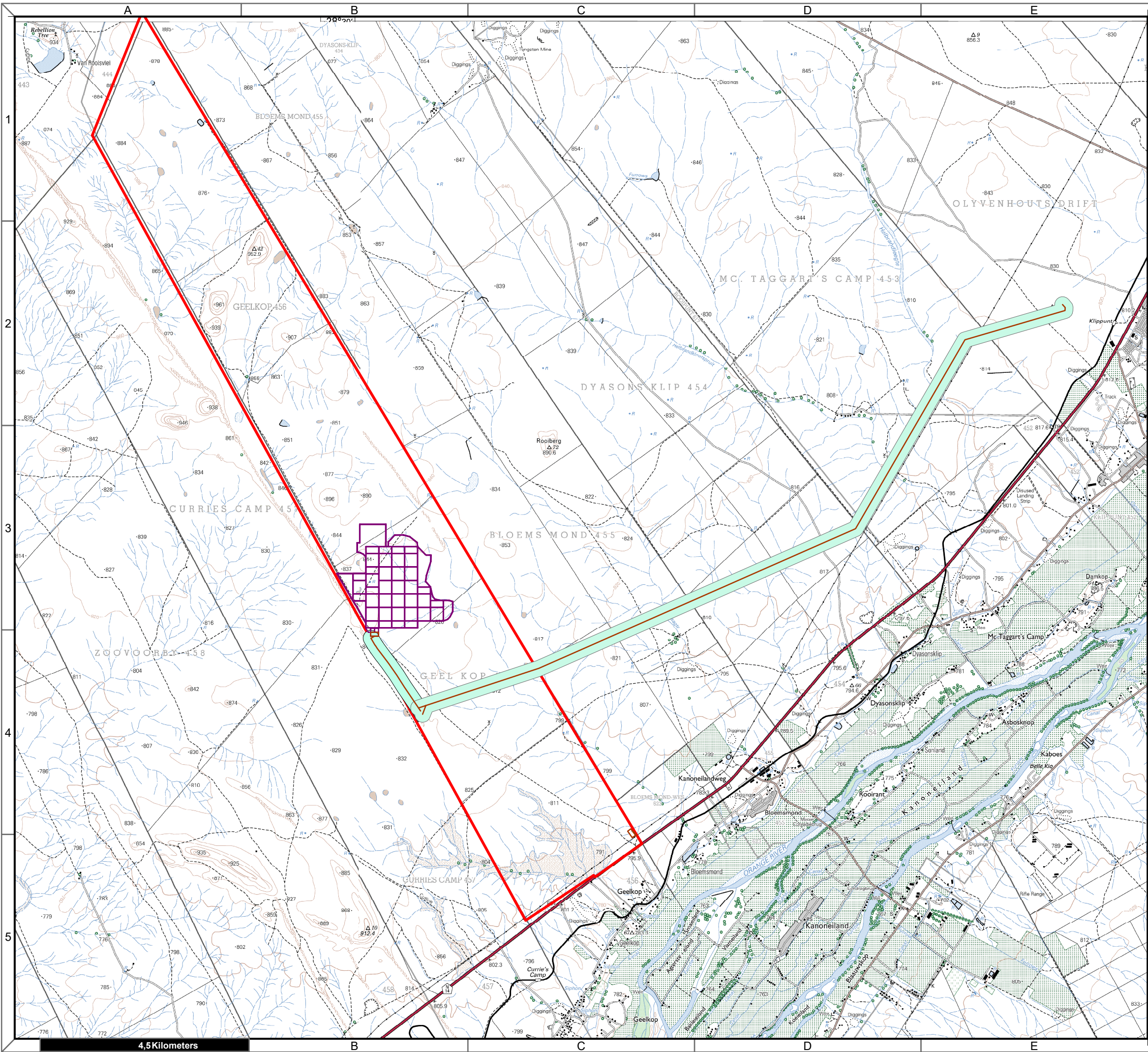
0 0,75 1,5 3 4,5 6

Map Drawn By:	Date	Reference
Melissa Mackay	2020/04/01	KAI632

Cape Environmental Assessment Practitioners (Pty) Ltd  
Reg. No. 2008/004627/07




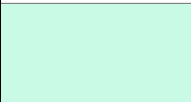
Telephone: +27 44 874 0365  
Facsimile: +27 44 874 0432  
Web: www.cape-eaprac.co.za

17 Progress St  
PO Box 2070  
George 6530



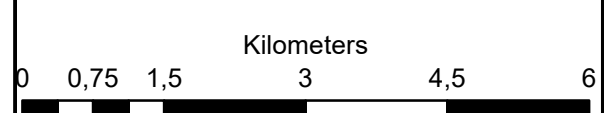
**Karroid PV  
Farm 456 Geelkop**

### Legend

-  Farm\_456
-  Grid\_Connection\_5
-  Karroid PV
-  Grid\_Corridor\_5

**Notes**

- Map Scale is 1: 80 000 when printed on A3
- Topographical data courtesy of Surveyor General
- Imagery date 2009



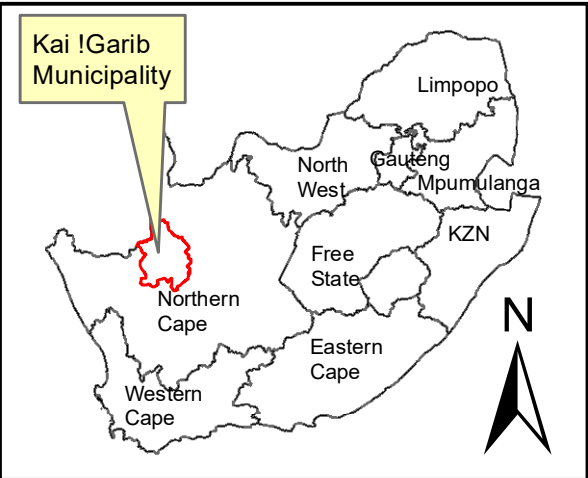
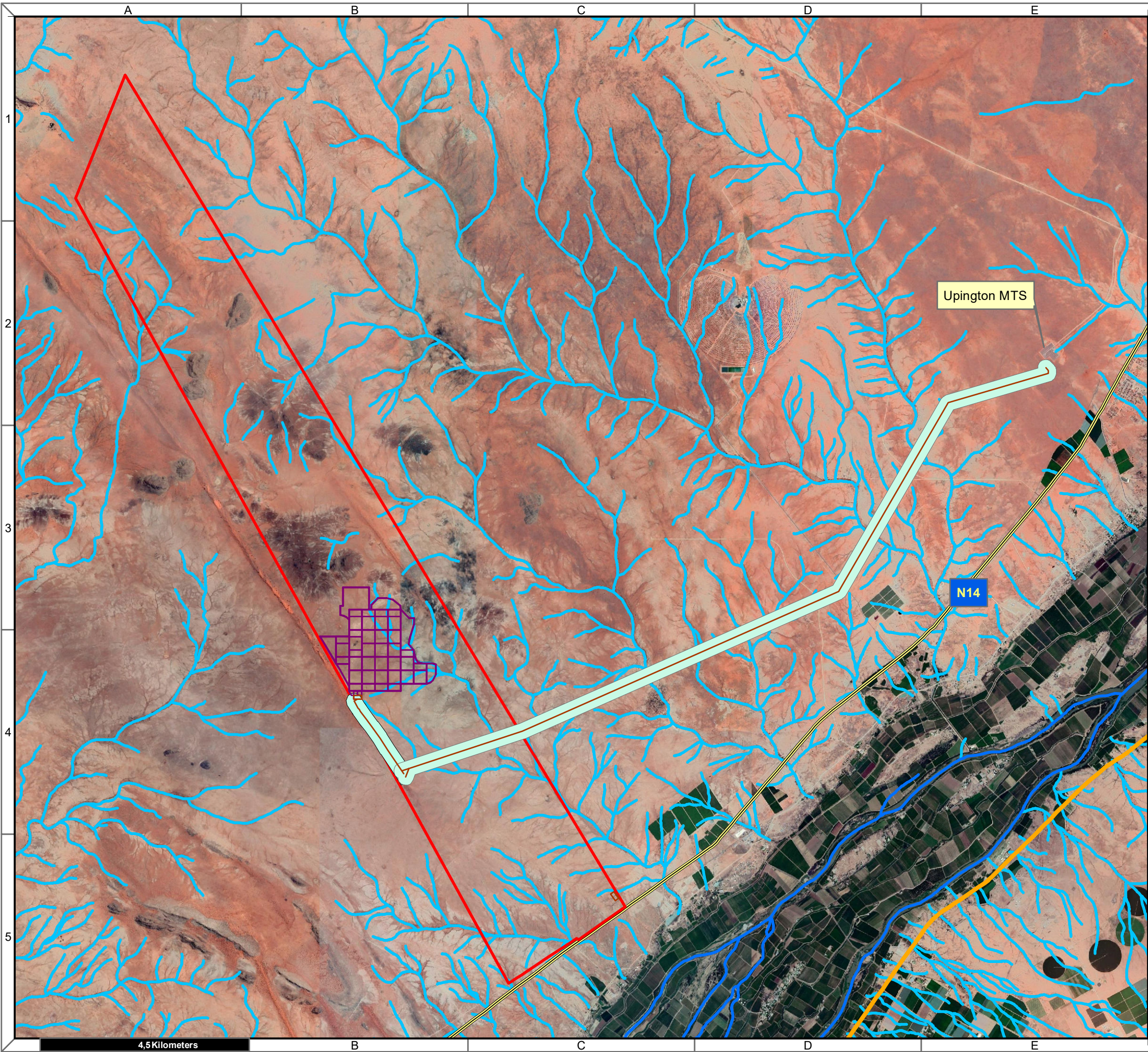
Map Drawn By:	Date	Reference
Melissa Mackay	2020/04/01	KAI632



**Cape Environmental Assessment Practitioners (Pty) Ltd**  
 Reg. No. 2008/004627/07  
 Telephone: +27 44 874 0365  
 Facsimile: +27 44 874 0432  
 Web: www.cape-eaprac.co.za










17 Progress St  
 PO Box 2070  
 George 6530

**1:50 000 TOPOGRAPHICAL PLANS**



**Karroid PV  
Farm 456 Geelkop**

**Legend**

-  Farm\_456
-  Grid\_Connection\_5
-  Karroid PV
-  Grid\_Corridor\_5
-  ARTERIAL ROUTE
-  MAIN ROAD
-  NATIONAL ROUTE
-  Perennial Rivers
-  Non-Perennial Rivers

**Notes**

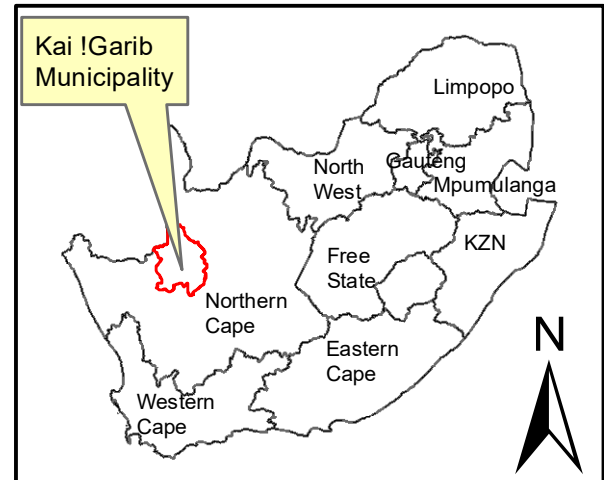
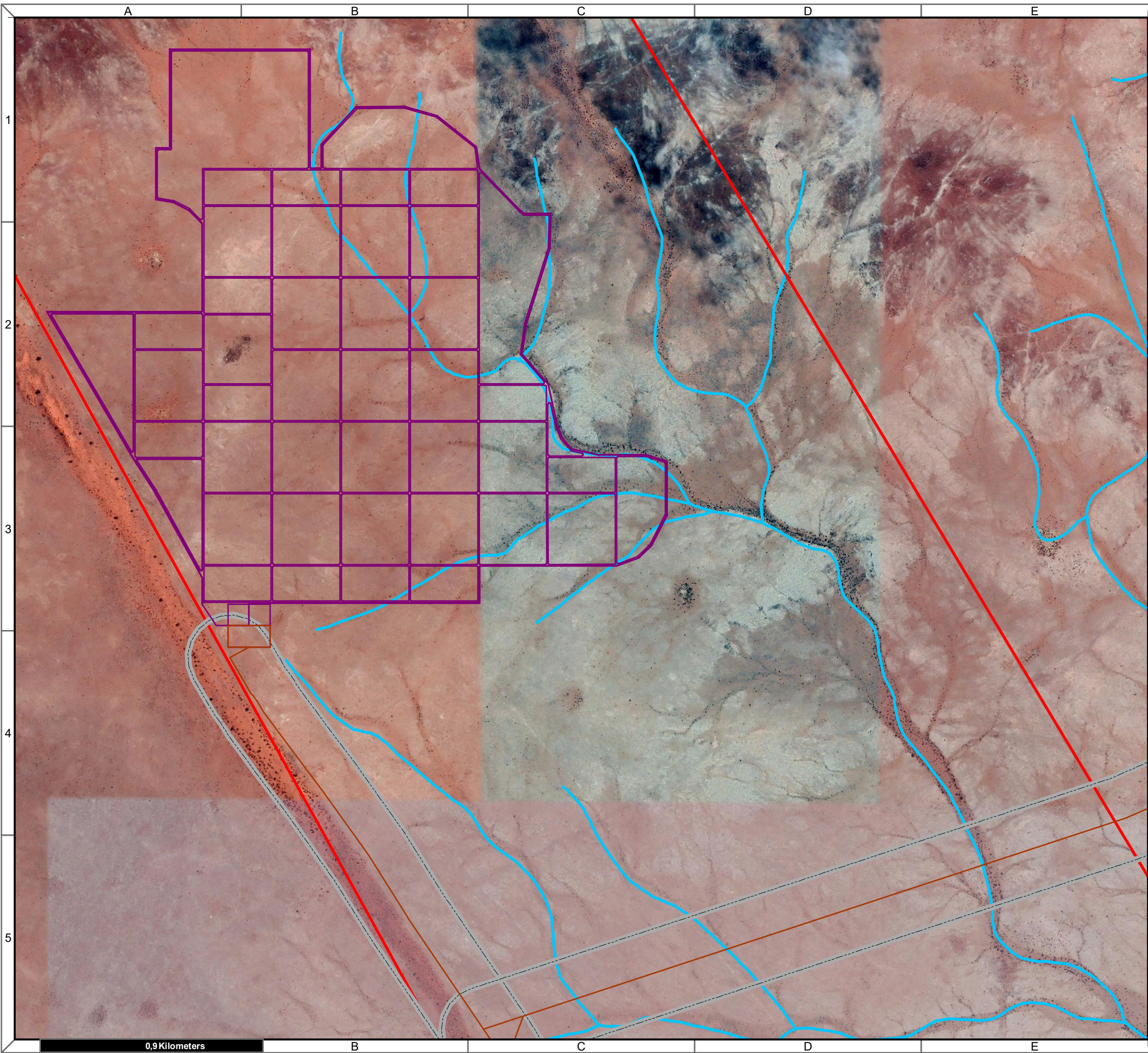
- Map Scale is 1: 80 000 when printed on A3
- Aerial image courtesy of Google Earth Pro 2020
- Imagery date December 2018

Kilometers

0   0,75   1,5   3   4,5   6










Map Drawn By:	Date	Reference
Melissa Mackay	2020/04/01	KAI632

 **Cape Environmental Assessment Practitioners (Pty) Ltd**  
 Reg. No. 2008/004627/07  
 Telephone: +27 44 874 0365  
 Facsimile: +27 44 874 0432  
 Web: www.cape-eaprac.co.za  
 17 Progress St  
 PO Box 2070  
 George 6530



**Karroid PV  
Farm 456 Geelkop**

**Legend**

-  Farm\_456
-  Grid\_Connection\_5
-  Karroid PV
-  Grid\_Corridor\_5
-  ARTERIAL ROUTE
-  MAIN ROAD
-  SECONDARY ROAD
-  Perennial River
-  Non-Perennial River

**Notes**

- Map Scale is 1: 15 000 when printed on A3
- Aerial image courtesy of Google Earth Pro 2020
- Imagery date December 2018

Kilometers

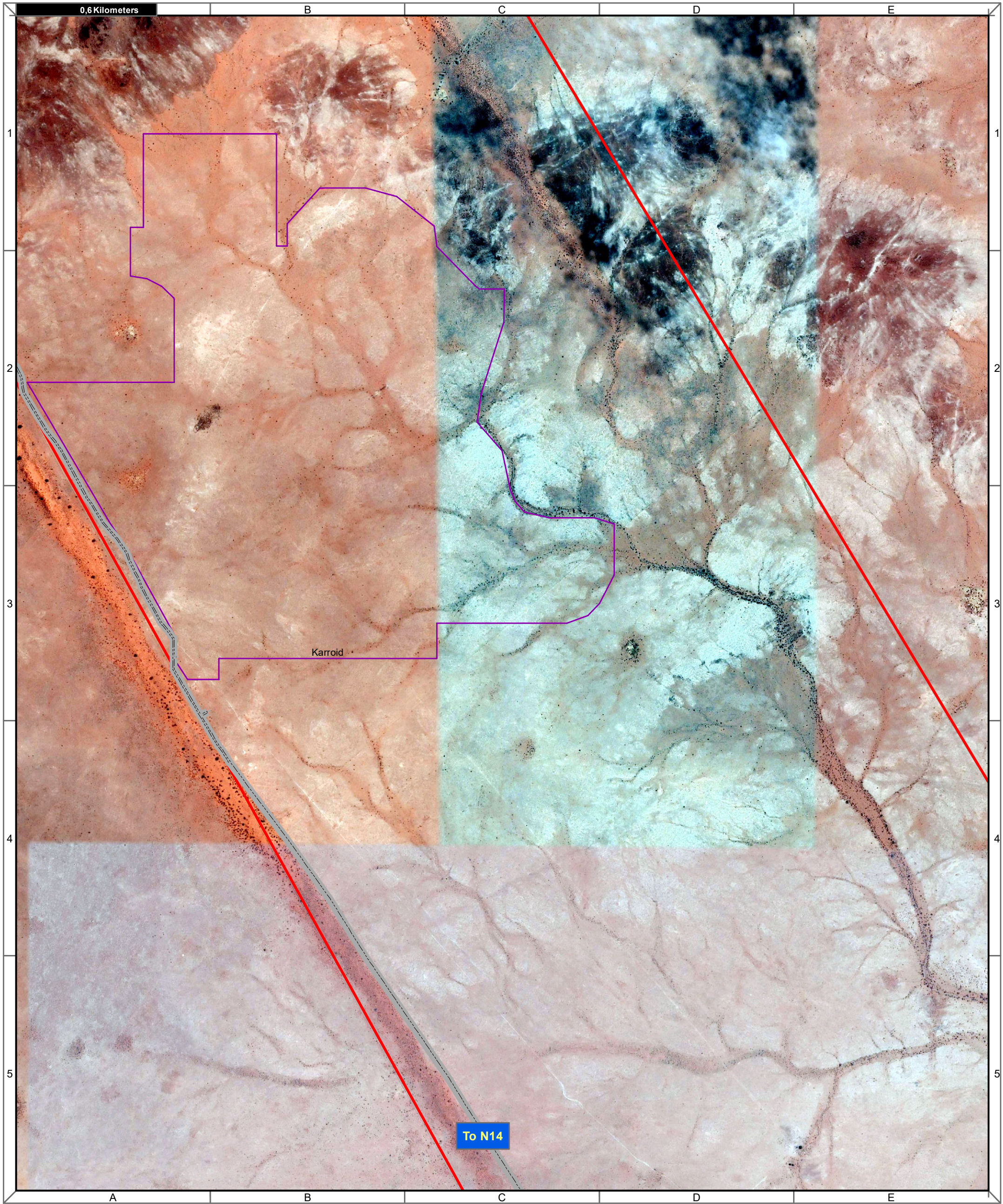
0 0,125 0,25 0,5 0,75 1

Map Drawn By:	Date	Reference
Melissa Mackay	2020/04/01	KAI632

**Cape Environmental Assessment Practitioners (Pty) Ltd**  
 Reg. No. 2008/004627/07

Telephone: +27 44 874 0365  
 Facsimile: +27 44 874 0432  
 Web: www.cape-eaprac.co.za

17 Progress St  
 PO Box 2070  
 George 6530

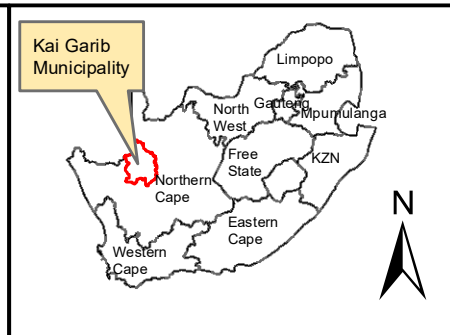


**Notes**  
 - Map Scale is 1: 15 000 when printed on A3  
 - Aerial image courtesy of Google Earth Pro 2020  
 - Imagery date December 2018

Kilometers  
 0 250 500 1 000 1 500 2 000

**Legend**

- Farm\_456
- Access Road
- Karroid



**Karroid PV  
Farm 456 Geelkop**

Map Drawn By:	Date	Reference
Melissa Mackay	2020/04/06	KAI632

Cape Environmental Assessment Practitioners (Pty) Ltd  
 Reg. No. 2008/004627/07

Telephone: +27 44 874 0365  
 Facsimile: +27 44 874 0432  
 Web: www.cape-eaprac.co.za

17 Progress St  
 PO Box 2070  
 George 6530

**ACCESS ROUTES**